



# Monthly Review on Price Indices



**May, 2016**  
**(Base 2007-08)**

**Government of Pakistan**  
**Statistics Division**  
**Pakistan Bureau of Statistics**  
**Islamabad**



## Inflation in Brief

1. CPI inflation General increased by 3.2% on year-on-year basis in May 2016 as compared to an increase of 4.2% in the previous month and 3.2% in May 2015. On month-on-month basis, it decreased by 0.2% in May 2016 as compared to increase of 1.5% in the previous month and an increase of 0.8% in May 2015.
2. Core inflation measured by non-food non-energy CPI (Core NFNE) increased by 4.6% on (YoY) basis in May 2016 as compared to increase of 4.4% in the previous month and 4.9% in May 2015. On (MoM) basis, it increased by 0.2% in May 2016 as compared to increase of 1.1% in previous month and no change in May 2015.
3. Core inflation, measured by 20% weighted trimmed mean CPI (Core Trimmed) increased by 3.6% on (YoY) basis in May 2016 as compared to 3.8% in the previous month and by 3.9% in May 2015. On (MoM) basis, it increased by 0.2% in May 2016 as compared to an increase of 0.6% in the previous month and 0.1% in May 2015.
4. SPI inflation on YoY increased by 0.6% in May 2016 as compared to an increase of 2.9% a month earlier and increase of 1.2 % in May 2015. On MoM basis, it decreased by 1.0% in May 2016 as compared to a decrease of 0.1% a month earlier and an increase of 1.3% in May,2015.
5. WPI inflation on YoY basis showed no change in May 2016 as compared to an increase of 0.6% a month earlier and a decrease of 1.8% in May 2015. WPI inflation on MoM basis increased by 0.6% in May 2016 as compared to increase of 1.3% a month earlier and an increase of 1.1% in May 2015.
6. Figures 1 and 2 show graphically the data of Table 1. Table 1.1 shows "Period Average" and "YoY" percent changes in indices of three years.

**Table 1: Inflation (%) (Base 2007-08)**

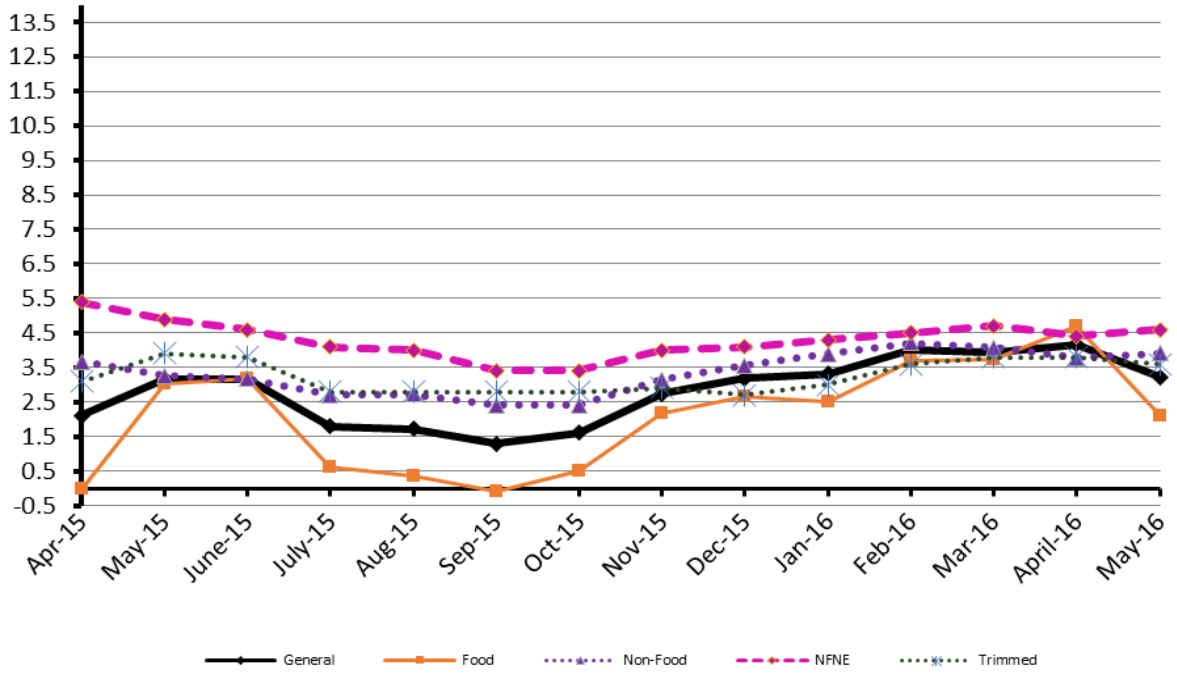
Period	CPI						Core Inflation				SPI**		WPI	
	General		Food		Non-food		NFNE*		Trimmed		YoY	MoM	YoY	MoM
	YoY	MoM	YoY	MoM	YoY	MoM	YoY	MoM	YoY	MoM				
Apr 15	2.1	1.3	0.0	1.4	3.7	1.3	5.4	1.4	3.1	0.6	-1.6	0.4	-2.9	0.9
May 15	3.2	0.8	3.0	1.8	3.3	0.0	4.9	0.0	3.9	0.1	1.2	1.3	-1.8	1.1
Jun-15	3.2	0.6	3.2	1.2	3.2	0.2	4.6	0.1	3.8	0.2	1.1	1.0	-2.0	1.2
Jul-15	1.9	0.4	0.6	0.1	2.8	0.6	4.1	0.6	2.9	0.5	-0.5	0.3	-2.9	-0.4
Aug-15	1.8	0.2	0.4	0.3	2.8	0.2	4.0	0.1	2.8	0.1	-1.5	-0.2	-2.9	-0.5
Sep-15	1.3	-0.1	-0.1	-0.4	2.4	0.1	3.4	0.1	2.8	0.1	-1.3	0.5	-3.5	-0.5
Oct 15	1.6	0.5	0.5	0.4	2.4	0.5	3.4	0.0	2.8	0.0	-0.1	1.2	-2.7	0.5
Nov 15	2.7	0.6	2.2	1.2	3.2	0.2	4.0	0.1	2.9	0.2	2.1	1.0	-1.7	0.0
Dec 15	3.2	-0.6	2.7	-1.6	3.6	0.2	4.1	0.2	2.7	0.2	2.9	-0.7	-0.4	-0.6
Jan 16	3.3	0.2	2.5	-0.6	3.9	0.8	4.3	0.9	3.0	0.6	3.1	-0.7	0.1	-0.5
Feb 16	4.0	-0.3	3.7	-0.7	4.2	0.0	4.5	0.2	3.6	0.1	3.6	-0.5	0.6	-0.6
Mar 16	3.9	0.1	3.7	0.5	4.1	-0.1	4.7	0.2	3.8	0.2	3.5	-0.2	0.2	-0.4
April 16	4.2	1.5	4.7	2.4	3.8	1.0	4.4	1.1	3.8	0.6	2.9	-0.1	0.6	1.3
May 16	3.2	-0.2	2.1	-0.7	3.9	0.2	4.6	0.2	3.6	0.2	0.6	-1.0	0.0	0.6

\*NFNE is non-food non-energy, \*\* SPI for quintile 1. Digits 0.0\* are due to rounding off.

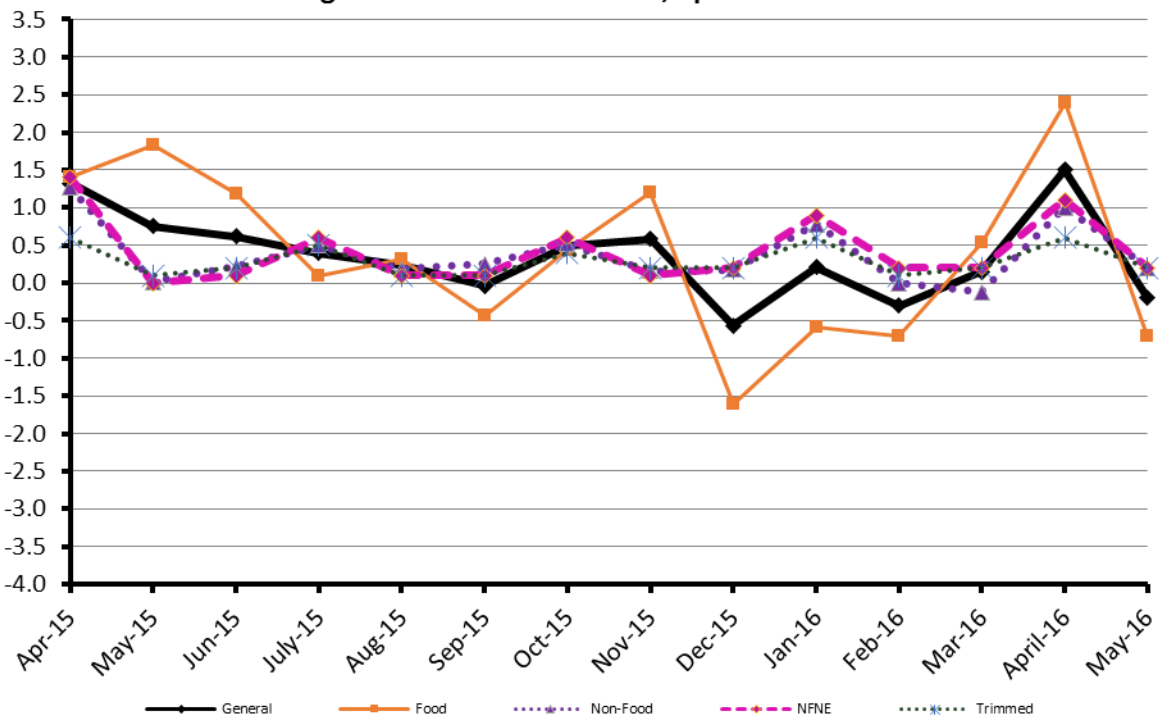
**Table 1.1 : Period Average and YoY % Changes of Indices (Base 2007-08)**

Index	Averages July-May % Changes			May over May % Changes		
	2015-16	2014-15	2013-14	2016	2015	2014
CPI	2.82	4.65	8.66	3.17	3.16	8.34
SPI	1.36	1.80	9.59	0.61	1.24	7.65
WPI	-1.17	-0.14	8.19	0.04	-1.79	7.34

**Figure 1: CPI Inflation YoY, Special Indices**



**Figure 2: CPI Inflation MoM, Special Indices**



## II. Consumer Price Index (CPI)

The Consumer Price Index of May 2016, has decreased by 0.21% over April 2016 and increased by 3.17% over corresponding month of the last year i.e. May 2015.

**Table 2 : Consumer Price Index by Group of Commodities and Services (Base 2007-08)**

No	Group	Group Weight (%)	Indices			% Change May 2016 Over		Impact (In % points) May 2016 Over	
			May 2016	April 2016	May 2015	April 2016	May 2015	April 2016	May 2015
	General	100.00	205.99	206.43	199.66	-0.21	3.17	-0.21	3.17
1.	Food & Non-alcoholic Bev.	34.83	219.65	221.59	218.32	-0.88	0.61	-0.33	0.23
	<i>Non-perishable Food Items</i>	29.84	221.23	221.60	215.36	-0.17	2.73	-0.05	0.88
	<i>Perishable Food Items</i>	4.99	210.21	221.58	236.07	-5.13	-10.95	-0.27	-0.65
2.	Alcoholic Bev.& Tobacco	1.41	346.08	344.10	268.97	0.58	28.67	0.01	0.55
3.	Clothing & Footwear	7.57	228.31	227.87	217.58	0.19	4.93	0.02	0.41
4.	Housing, Water, Electricity, Gas & Fuels	29.41	187.12	187.08	177.75	0.02	5.27	0.01	1.38
5.	Furnishing & Household Equipment Maintenance	4.21	220.71	220.09	210.84	0.28	4.68	0.01	0.21
6.	Health	2.19	187.43	187.29	178.22	0.07	5.17	0.00	0.10
7.	Transport	7.20	169.31	169.33	176.82	-0.01	-4.25	0.00	-0.27
8.	Communication	3.22	130.77	130.77	130.29	0.00	0.37	0.00	0.01
9.	Recreation & Culture	2.02	195.79	195.68	192.98	0.06	1.46	0.00	0.03
10.	Education	3.94	224.19	221.48	209.17	1.22	7.18	0.05	0.30
11.	Restaurants & Hotels	1.23	263.16	261.89	248.45	0.48	5.92	0.01	0.09
12.	Miscellaneous	2.76	233.52	232.97	223.08	0.24	4.68	0.01	0.14

Main contributors to month-on-month and year-on-year percentage changes are given below and detail is given in Annexure A.

1. **Month-on-month** Top few commodities which varied from previous month i.e. April 2016 are given below:-

**Food Items Increased:** Pulse Gram (12.46%), Besan (11.82%), Gram Whole (10.15%), Potatoes (9.28%), Pulse Mash washed (3.67%), Fresh Fruit (3.53%), and Pulse Masoor (3.12%).

**Decreased:** Tomatoes (49.43%), Onion (16.04%), Fresh Vegetables (7.08%), Chicken (6.34%), Wheat (4.55%), Eggs (4.48%), and Wheat flour (2.45%).

**Non-food Items Increased:** Education (1.22%), Household textiles (0.67%) and Kerosene Oil (0.63%).

**Decreased:** Motor Vehicle Accessories (0.66%).

2. **Year-on-Year:** Top few commodities which varied from previous year i.e. May 2015 are given below:-

**Food Items Increased:** Pulse Gram (56.55%), Pulse Mash (52.8%), Besan (50.09%), Gram Whole (37.09%), Cigarettes (28.86%), Betel Leaves and Nuts (13.91%), Tea (12.35%), Pulse Masoor (8.86%), Potatoes (8.75%) and Sugar (7.84%).

**Decreased:** Tomatoes (55.52%), Onion (30.02%), Fresh Vegetables (14.02%), Rice (13.15%), Eggs (8.64%), and Cooking Oil (8.13%).

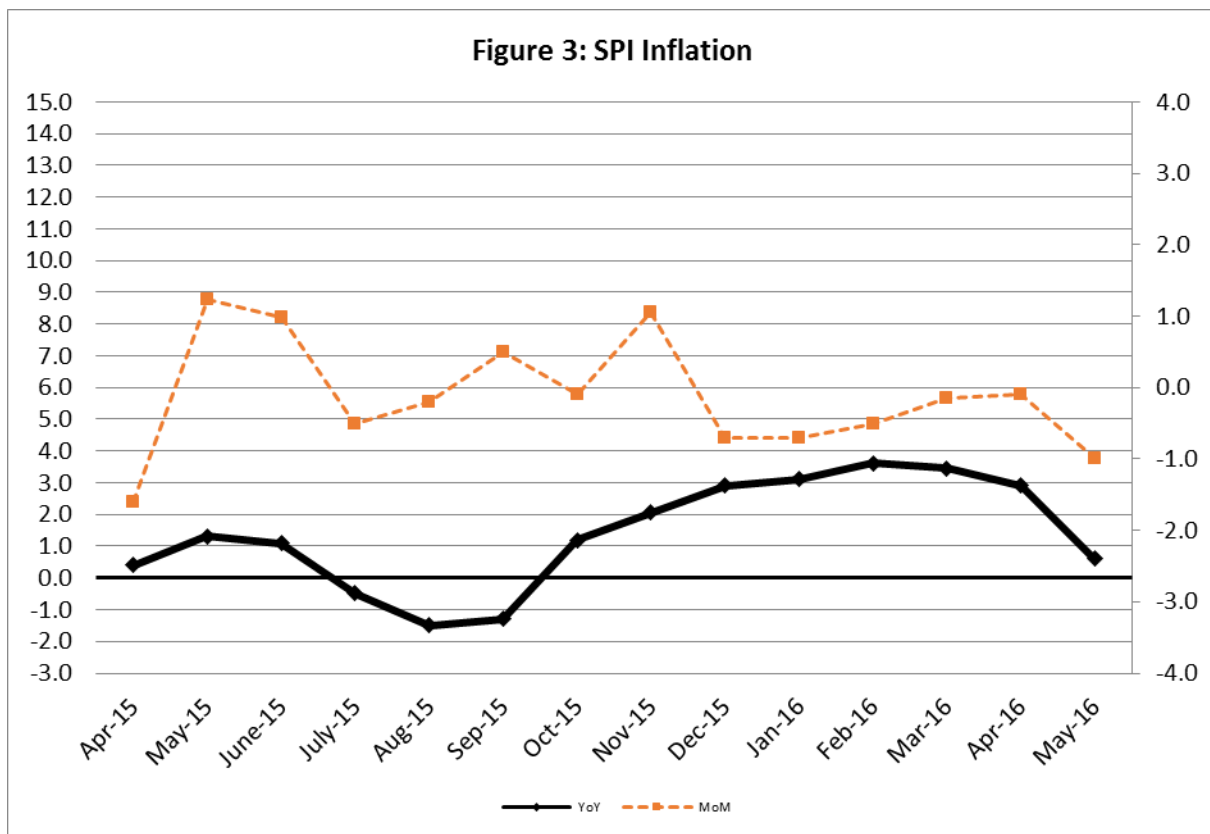
**Non-food Items Increased:** Gas (9.92%), Tailoring (8.39%), Doctor (MBBS) Clinic Fee (7.64%), Water Supply (7.46%), Household Servants (7.39%), Education (7.18%), Construction Wage Rates (7.1%), Readymade Garments (6.65%) and Cleaning & Laundry (6.43%).

**Decreased:** Motor Fuel (9.98%), Kerosene Oil (7.79%), Motor Vehicle Accessories (4.71%) and Transport Services (2.13%).

### III. Sensitive Price Indicator

Quintile-wise percentage changes YoY and MoM are given below in Table 3. The series from April 2015 to May 2016 is also graphed below in Figure 3.

Table 3: Sensitive Price Indicator (Base 2007-08)					
Quintiles	Indices			% Change May 2016 over	
	May 2016	April 2016	May 2015	April 2016	May 2015
1	204.57	206.55	203.33	-0.96	0.61
2	212.31	214.11	209.62	-0.84	1.28
3	213.44	215.19	212.99	-0.81	0.21
4	218.17	219.78	214.56	-0.73	1.68
5	215.50	216.70	211.53	-0.55	1.88
Combined	214.35	215.88	211.48	-0.71	1.36



## IV. Wholesale Price Index

The Wholesale Price Index for May, 2016 increased by 0.55% over April, 2016. It increased by 0.04% over the corresponding month of the last year. YoY and MoM movements, from April, 2015 to May, 2016 are also graphed

**Table 4 : Wholesale Price Index by Group of Commodities (Base 2007-08)**

No.	Group	Group Weight (%)	Indices			% Change May, 2016 over		Impact (in %age points) May, 2016 over	
			May 2016	April 2016	May 2015	April 2016	May 2015	April 2016	May 2015
	<b>General</b>	<b>100.00</b>	<b>208.01</b>	<b>206.87</b>	<b>207.92</b>	<b>0.55</b>	<b>0.04</b>	<b>0.55</b>	<b>0.04</b>
1.	Agriculture, Forestry & Fishery Products	25.77	233.26	229.78	224.47	1.51	3.92	0.43	1.09
2.	Ores & Minerals, Electricity, Gas & Water	12.04	244.11	244.59	245.36	-0.20	-0.51	-0.03	-0.07
3.	Food Products, Beverages & Tobacco, Textiles, Apparel & Leather Products	31.11	215.79	214.90	206.76	0.41	4.37	0.13	1.35
	i. Food Products, Bev. & Tobacco	20.07	229.26	228.66	218.01	0.26	5.16	0.06	1.09
	ii. Textiles and Apparel	10.33	190.78	189.28	185.42	0.79	2.89	0.07	0.27
	iii. Leather Products	0.71	198.83	198.73	199.09	0.05	-0.13	0.00	0.00
4.	Other Transportable Goods except Metal Products, Machinery & Equipment	22.37	162.49	162.91	184.03	-0.26	-11.70	-0.05	-2.32
5.	Metal Products, Machinery & Equipment	8.72	172.56	171.22	172.74	0.78	-0.10	0.06	-0.01

below in Figure 4.

Main contributors to month-on-month and year-on-year percentage changes are given below and detail is given in Annexure B.

1. **Month-on-month** Top few commodities which varied from previous month i.e. April, 2016 are given below:-

**Increased:** Other Cereal Flour (15.00%), Fish (14.67%), Pulses (8.22%), Potatoes (7.42%), Furnace oil (6.76%), Fresh Fruits (5.95%), Fiber Crops(4.83%), Other Glass articles (4.40%), Other Oil Seeds (3.32%) and Bajra (3.26%).

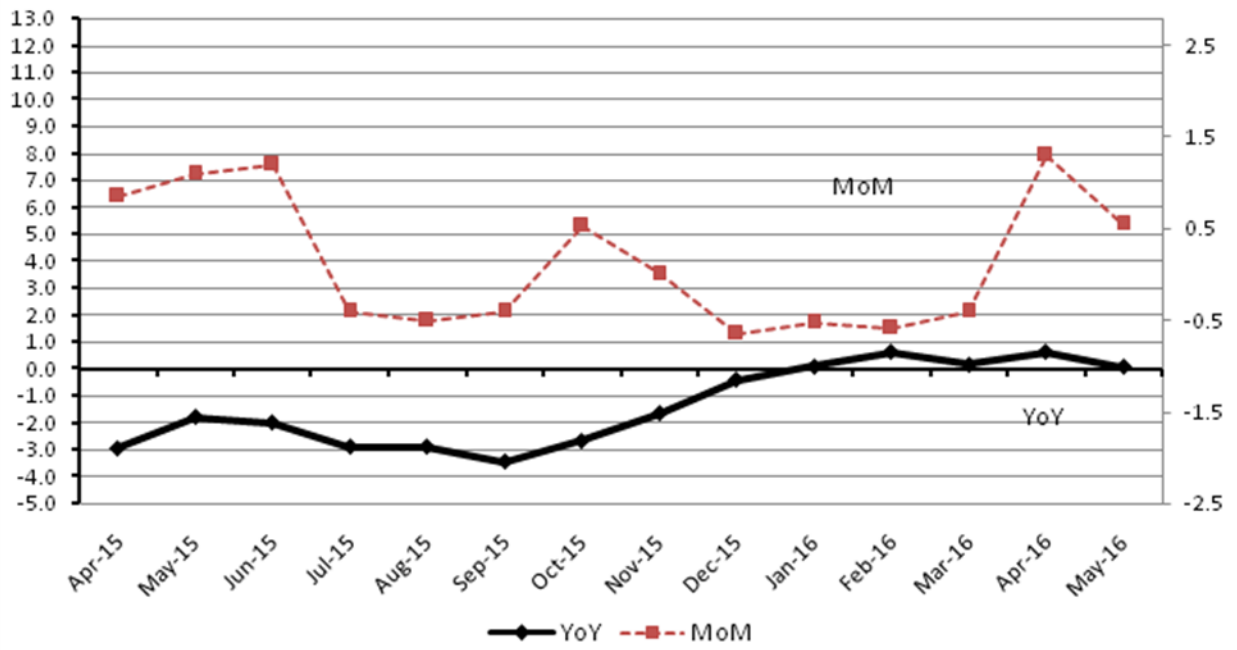
**Decreased:** Vegetables (27.16%), Poultry (4.84%), Coal (4.66%), Wheat (3.90%), Stimulant and Spice Crops, Fertilizer (2.37%) and Chemicals (2.10%).

2. **Year-on-year** Top few commodities which varied from previous year i.e. May, 2015 are given below:-

**Increased:** Other Cereal Flour (58.21%), Fish (49.99%), Woolen carpets (37.39%), Tobacco Products (34.25%), Pulses (22.43%), Sugar Confectionary (16.18%), Coffee & Tea (13.44%) and Medicines (11.35%).

**Decreased:** Furnace oil (45.17%), Kerosene oil (35.67%), Vegetables (30.32%), Coal (28.07%), Stimulant & Spice Crops (24.43%), Diesel oil (23.57%), Motor spirit (13.49%) and Rice (12.35%)

Figure 4: WPI Inflation





**Annexure A: Consumer Price Index Numbers by Commodity Groups & Commodities (2007-08=100)**

Item and Specification	Weight	Index Numbers			% Change in May 2016 over			
		May 16	Apr 16	May 15	Apr 2016	May 2015		
<b>General</b>	<b>100.0000</b>	<b>205.99</b>	<b>206.43</b>	<b>199.66</b>	-	<b>0.21</b>	+	<b>3.17</b>
<b>Food and non-alcoholic Bevera</b>	<b>34.8343</b>	<b>219.65</b>	<b>221.59</b>	<b>218.32</b>	-	<b>0.88</b>	+	<b>0.61</b>
01 Wheat	0.3477	190.74	199.84	195.82	-	4.55	-	2.59
02 Wheat Flour	4.1648	208.56	213.80	211.25	-	2.45	-	1.27
03 Wheat Product	0.0959	213.99	214.44	212.65	-	0.21	+	0.63
04 Besan	0.1500	297.68	266.21	198.34	+	11.82	+	<u>50.09</u>
05 Rice	1.5821	154.07	155.53	177.40	-	0.94	-	13.15
06 Cereals	0.1563	248.06	248.02	240.96	+	0.02	+	2.95
07 Bakery & Confectionary	1.1550	212.69	212.32	208.20	+	0.17	+	2.16
08 Nimco	0.4574	245.24	245.22	239.02	+	0.01	+	2.60
09 Meat	2.4303	261.05	260.33	246.71	+	0.28	+	5.81
10 Chicken	1.3596	207.46	221.51	209.37	-	6.34	-	0.91
11 Fish	0.2970	218.98	220.79	214.25	-	0.82	+	2.21
12 Milk Fresh	6.6800	261.88	260.36	251.91	+	0.58	+	3.96
13 Milk Products	0.6338	253.26	251.36	244.99	+	0.76	+	3.38
14 Milk Powder	0.1129	235.69	235.13	226.10	+	0.24	+	4.24
15 Eggs	0.4555	150.91	157.99	165.19	-	4.48	-	8.64
16 Mustard Oil	0.0952	153.93	153.28	152.12	+	0.42	+	1.19
17 Cooking Oil	1.7538	132.88	132.28	144.64	+	0.45	-	8.13
18 Vegetable Ghee	2.0714	137.59	137.14	141.19	+	0.33	-	2.55
19 Dry Fruits	0.2543	263.17	263.06	252.03	+	0.04	+	4.42
20 Fresh Fruits	1.8649	260.15	251.28	253.52	+	3.53	+	2.62
21 Pulse Masoor	0.2712	211.25	204.86	194.06	+	3.12	+	8.86
22 Pulse Moong	0.2336	299.54	300.71	314.45	-	0.39	-	4.74
23 Pulse Mash (Washed)	0.2098	374.98	361.70	245.40	+	3.67	+	<u>52.80</u>
24 Pulse Gram	0.2361	311.49	276.99	198.97	+	12.46	+	<u>56.55</u>
25 Gram Whole	0.1616	258.79	234.94	188.78	+	10.15	+	37.09
26 Beans	0.0269	234.91	233.02	233.82	+	0.81	+	0.47
27 Potatoes	0.4774	136.23	124.66	125.27	+	9.28	+	8.75
28 Onion	0.5415	196.92	234.53	281.38	-	16.04	-	30.02
29 Tomatoes	0.4494	75.85	150.00	170.51	-	49.43	-	<u>55.52</u>
30 Fresh Vegetables	1.6577	216.09	232.56	251.32	-	7.08	-	14.02
31 Sugar	1.0445	227.12	226.87	210.60	+	0.11	+	7.84
32 Gur	0.0220	271.20	264.70	264.36	+	2.46	+	2.59
33 Honey	0.0446	307.78	307.78	303.39	+	0.00	+	1.45
34 SweetMeat	0.2483	241.33	239.96	234.89	+	0.57	+	2.74
35 Beverages	1.1990	219.07	217.77	209.53	+	0.60	+	4.55
36 Jam, Tomato Ketchup & Pickles	0.2454	214.28	213.44	207.96	+	0.39	+	3.04
37 Condiments	0.2656	262.65	263.03	258.07	-	0.14	+	1.77
38 Spices	0.5441	240.26	239.67	235.30	+	0.25	+	2.11
39 Tea	0.8377	256.86	257.15	228.63	-	0.11	+	12.35
<b>Alcoholic Beverages, Tobacco</b>	<b>1.4135</b>	<b>346.08</b>	<b>344.10</b>	<b>268.97</b>	+	<b>0.58</b>	+	<b>28.67</b>
40 Cigarettes	1.3906	347.85	345.88	269.95	+	0.57	+	28.86
41 Betel Leaves & Nuts	0.0229	238.78	236.22	209.62	+	1.08	+	13.91
<b>Clothing and footwear</b>	<b>7.5708</b>	<b>228.31</b>	<b>227.87</b>	<b>217.58</b>	+	<b>0.19</b>	+	<b>4.93</b>
42 Cotton Cloth	1.7286	223.74	223.11	212.76	+	0.28	+	5.16
43 Woolen Cloth	0.8759	243.69	243.14	234.13	+	0.23	+	4.08
44 Readymade Garments	0.9739	235.32	234.60	220.64	+	0.31	+	6.65
45 Woolen Readymade Garments	0.3964	253.20	252.74	240.86	+	0.18	+	5.12
46 Hosiery	0.5094	240.43	240.25	229.66	+	0.07	+	4.69
47 Dopatta	0.4412	239.65	239.49	232.33	+	0.07	+	3.15
48 Cleaning and Laundry	0.2110	253.01	252.29	237.72	+	0.29	+	6.43
49 Tailoring	0.8840	293.42	292.96	270.70	+	0.16	+	8.39
50 Footwear	1.5504	166.23	166.17	164.56	+	0.04	+	1.01
<b>Housing, water, Elec., Gas an</b>	<b>29.4149</b>	<b>187.12</b>	<b>187.08</b>	<b>177.75</b>	+	<b>0.02</b>	+	<b>5.27</b>
51 House Rent	21.8149	176.44	176.44	166.88	+	0.00	+	5.73
52 Construction Input Items	0.5623	243.86	242.89	238.93	+	0.40	+	2.06

**Annexure A: Consumer Price Index Numbers by Commodity Groups & Commodities (2007-08=100)**

Item and Specification	Weight	Index Numbers			% Change in May 2016 over	
		May 16	Apr 16	May 15	Apr 2016	May 2015
53 Construction Wage Rates	0.3331	226.72	226.24	211.69	+ 0.21	+ 7.10
54 Water Supply	0.4971	161.10	161.10	149.92	+ 0.00	+ 7.46
55 Electricity	4.3985	238.10	238.10	231.52	+ 0.00	+ 2.84
56 Gas	1.5756	158.08	158.08	143.81	+ 0.00	+ 9.92
57 Kerosene Oil	0.0057	195.28	194.05	211.77	+ 0.63	- 7.79
58 Firewood Whole	0.2277	284.79	283.25	274.59	+ 0.54	+ 3.71
<b>Furnishing and household equi</b>	<b>4.2082</b>	<b>220.71</b>	<b>220.09</b>	<b>210.84</b>	<b>+ 0.28</b>	<b>+ 4.68</b>
59 Furniture	0.3315	211.36	210.33	203.03	+ 0.49	+ 4.10
60 Household Textiles	0.6489	220.62	219.15	207.80	+ 0.67	+ 6.17
61 Household Equipment	0.5936	178.29	177.64	174.36	+ 0.37	+ 2.25
62 Utensils	0.3212	223.50	222.55	213.57	+ 0.43	+ 4.65
63 Plastic Products	0.2547	206.97	206.90	201.69	+ 0.03	+ 2.62
64 Washing Soaps & Detergents	0.7893	226.67	226.13	221.82	+ 0.24	+ 2.19
65 Sewing Needle & Dr Cell	0.1496	208.58	208.24	198.97	+ 0.16	+ 4.83
66 Household Servant	1.0432	246.18	246.17	229.23	+ 0.00	+ 7.39
67 Marriage Hall Charges	0.0762	240.06	238.96	231.83	+ 0.46	+ 3.55
<b>Health</b>	<b>2.1868</b>	<b>187.43</b>	<b>187.29</b>	<b>178.22</b>	<b>+ 0.07</b>	<b>+ 5.17</b>
68 Drugs & Medicines	1.2667	153.11	152.83	148.34	+ 0.18	+ 3.22
69 Medical Equipments	0.0080	233.19	232.59	225.36	+ 0.26	+ 3.47
70 Doctor (MBBS) Clinic Fee	0.5904	260.45	260.45	241.97	+ 0.00	+ 7.64
71 Medical Tests	0.3217	187.44	187.54	177.69	- 0.05	+ 5.49
<b>Transport</b>	<b>7.2023</b>	<b>169.31</b>	<b>169.33</b>	<b>176.82</b>	<b>- 0.01</b>	<b>- 4.25</b>
72 Motor Vehicles	0.6630	165.23	165.22	163.41	+ 0.01	+ 1.11
73 Motor Vehicle Accessories	0.2439	215.24	216.66	225.89	- 0.66	- 4.71
74 Motor Fuel	3.0269	135.44	135.46	150.45	- 0.01	- 9.98
75 Mechanical Service	0.4552	224.39	223.78	215.35	+ 0.27	+ 4.20
76 Motor Vehicle Tax	0.1099	210.18	210.18	210.18	+ 0.00	+ 0.00
77 Transport Services	2.7034	193.15	193.15	197.35	+ 0.00	- 2.13
<b>Communication</b>	<b>3.2198</b>	<b>130.77</b>	<b>130.77</b>	<b>130.29</b>	<b>+ 0.00</b>	<b>+ 0.37</b>
78 Postal Services	0.0662	239.10	238.97	227.44	+ 0.05	+ 5.13
79 Communication & Apparatus	3.1536	128.49	128.50	128.25	- 0.01	+ 0.19
<b>Recreation and culture</b>	<b>2.0227</b>	<b>195.79</b>	<b>195.68</b>	<b>192.98</b>	<b>+ 0.06</b>	<b>+ 1.46</b>
80 Recreation & Culture	0.8634	129.15	129.09	128.25	+ 0.05	+ 0.70
81 Text Books	0.5706	292.41	292.33	290.62	+ 0.03	+ 0.62
82 Newspapers	0.1934	175.49	175.49	175.42	+ 0.00	+ 0.04
83 Stationery	0.3953	211.82	211.49	201.99	+ 0.16	+ 4.87
<b>Education</b>	<b>3.9431</b>	<b>224.19</b>	<b>221.48</b>	<b>209.17</b>	<b>+ 1.22</b>	<b>+ 7.18</b>
84 Education	3.9431	224.19	221.48	209.17	+ 1.22	+ 7.18
<b>Restaurants and hotels</b>	<b>1.2286</b>	<b>263.16</b>	<b>261.89</b>	<b>248.45</b>	<b>+ 0.48</b>	<b>+ 5.92</b>
85 Readymade Food	1.2286	263.16	261.89	248.45	+ 0.48	+ 5.92
<b>Misc. goods and services</b>	<b>2.7550</b>	<b>233.52</b>	<b>232.97</b>	<b>223.08</b>	<b>+ 0.24</b>	<b>+ 4.68</b>
86 Personal Care	1.4935	214.76	213.72	206.16	+ 0.49	+ 4.17
87 Cosmetics	0.3853	199.04	199.01	190.66	+ 0.02	+ 4.40
88 Blades	0.0322	195.16	195.05	185.88	+ 0.06	+ 4.99
89 Personal Equipments	0.8440	283.91	284.00	269.23	- 0.03	+ 5.45

## Annexure B: Wholesale Price Indices by Major Groups &amp; Commodities

(2007-08=100)

Item and Specification	Weight	Index Numbers			% Change in May 2016 over			
		May 16	Apr 16	May 15	Apr 2016	May 2015		
<b>General</b>	<b>100.0000</b>	<b>208.01</b>	<b>206.87</b>	<b>207.92</b>	<b>+</b>	<b>0.55</b>	<b>+</b>	<b>0.04</b>
<b>Agriculture Forestry &amp; Fisher</b>	<b>25.7674</b>	<b>233.26</b>	<b>229.78</b>	<b>224.47</b>	<b>+</b>	<b>1.51</b>	<b>+</b>	<b>3.92</b>
001 Wheat	0.6297	199.04	207.11	199.19	-	3.90	-	0.08
002 Maize	0.6764	209.33	205.56	198.78	+	1.83	+	5.31
003 Rice	2.4413	143.34	142.90	163.53	+	0.31	-	12.35
004 Sorghum / Jowar	0.0214	286.07	286.45	321.25	-	0.13	-	10.95
005 Millet / Bajra	0.0374	193.10	187.00	189.44	+	3.26	+	1.93
006 Vegetables	1.2441	201.87	277.16	289.71	-	27.16	-	30.32
007 Fresh Fruits	1.5144	282.91	267.02	262.42	+	5.95	+	7.81
008 Dry Fruits	0.2478	251.32	248.97	238.89	+	0.94	+	5.20
009 Cotton Seeds	1.1511	251.49	254.81	231.37	-	1.30	+	8.70
010 Other Oil Seeds	0.0722	165.14	159.83	161.07	+	3.32	+	2.53
011 Edible Roots / Potatoes	0.2540	111.80	104.08	106.40	+	7.42	+	5.08
012 Stimulant & Spice Crops	0.1634	226.16	234.41	299.29	-	3.52	-	24.43
013 Pulses	0.4901	280.91	259.57	229.44	+	8.22	+	22.43
014 Sugar Crops	1.0725	286.34	286.29	286.29	+	0.02	+	0.02
015 Fibre Crops	5.3169	183.00	174.57	178.69	+	4.83	+	2.41
016 Unmanufactured Tobacco	0.0742	233.06	230.61	219.79	+	1.06	+	6.04
017 Poultry	0.5633	220.59	231.81	214.91	-	4.84	+	2.64
018 Raw Milk from Bovine Animals	7.0279	258.97	256.11	252.55	+	1.12	+	2.54
019 Eggs	0.5034	150.30	150.83	163.42	-	0.35	-	8.03
020 Raw Animal Materials / Wool	0.0351	175.56	175.99	174.38	-	0.24	+	0.68
021 Hides & Fur Skins, Raw	0.4834	151.80	151.73	158.90	+	0.05	-	4.47
022 Fuel Wood in Logs	0.0179	264.77	264.77	259.09	+	0.00	+	2.19
023 Fish Live Fresh or Chilled	1.7295	423.43	369.26	282.30	+	14.67	+	49.99
<b>Ores/Minerals, Elec., Gas &amp; W</b>	<b>12.0389</b>	<b>244.11</b>	<b>244.59</b>	<b>245.36</b>	<b>-</b>	<b>0.20</b>	<b>-</b>	<b>0.51</b>
024 Coal not Agglomerated	0.7508	160.78	168.63	223.53	-	4.66	-	28.07
025 Natural Gas Liquified	5.7385	208.07	208.04	200.10	+	0.01	+	3.98
026 Salt & Pure Sodium Chloride	0.0584	252.31	252.31	248.84	+	0.00	+	1.39
027 Electrical Energy	5.4912	293.09	293.09	295.61	+	0.00	-	0.85
<b>Food, Beverages, Tobacco, Textil</b>	<b>31.1122</b>	<b>215.79</b>	<b>214.90</b>	<b>206.76</b>	<b>+</b>	<b>0.41</b>	<b>+</b>	<b>4.37</b>
<b>Food Products, Beverages &amp;</b>	<b>20.0718</b>	<b>229.26</b>	<b>228.66</b>	<b>218.01</b>	<b>+</b>	<b>0.26</b>	<b>+</b>	<b>5.16</b>
028 Meat of Animals	3.4559	271.73	269.28	262.20	+	0.91	+	3.63
029 Vegetables & Fruit Juice	0.0058	203.24	202.69	199.38	+	0.27	+	1.94
030 Dried Fruits & Nuts	0.1733	242.58	245.68	229.34	-	1.26	+	5.77
031 Fruit Juices	0.3880	179.74	176.37	174.61	+	1.91	+	2.94
032 Vegetable Oils Refined	1.9242	151.60	150.87	153.75	+	0.48	-	1.40
033 Vegetable Ghee	1.5632	122.60	121.50	122.65	+	0.91	-	0.04
034 Oil Cakes	0.9611	226.23	222.77	206.29	+	1.55	+	9.67
035 Processed Liquid Milk	4.4437	248.90	248.90	251.52	+	0.00	-	1.04
036 Milk & Cream in Solid Form	0.0316	218.99	219.24	220.36	-	0.11	-	0.62
037 Ice Cream	0.0047	231.30	229.62	219.91	+	0.73	+	5.18
038 Dairy Products N.E.C	0.0117	248.01	247.85	243.80	+	0.06	+	1.73
039 Wheat Flour	2.3034	192.67	195.65	192.24	-	1.52	+	0.22
040 Other Cereal Flour	0.0604	275.08	239.21	173.87	+	15.00	+	58.21
041 Sugar Refined	1.7975	241.96	240.36	226.96	+	0.67	+	6.61
042 Chocolate	0.0139	101.06	101.06	99.19	+	0.00	+	1.89
043 Sugar Confectionary	0.0738	118.83	118.83	102.28	+	0.00	+	16.18
044 Coffee & Tea	0.7303	232.09	234.40	204.59	-	0.99	+	13.44
045 Spices	0.1449	189.79	189.67	189.82	+	0.06	-	0.02
046 Other Food Products	0.0336	292.52	292.52	292.02	+	0.00	+	0.17
047 Mineral Water	0.0207	194.37	194.37	187.86	+	0.00	+	3.47
048 Beverages	0.6303	172.44	172.44	171.95	+	0.00	+	0.28
049 Tobacco Products	1.2998	390.01	390.01	290.52	+	0.00	+	34.25
<b>Textiles &amp; Apparels</b>	<b>10.3289</b>	<b>190.78</b>	<b>189.28</b>	<b>185.42</b>	<b>+</b>	<b>0.79</b>	<b>+</b>	<b>2.89</b>
050 Cotton Yarn	5.2491	175.29	173.67	170.81	+	0.93	+	2.62
051 Nylon Yarn	0.1719	147.08	147.08	150.22	+	0.00	-	2.09
052 Blended Yarn	0.1689	176.75	176.66	184.93	+	0.05	-	4.42
053 Woven Fabrics	0.0128	279.42	275.66	258.39	+	1.36	+	8.14
054 Cotton Fabrics	0.6343	208.84	206.45	201.34	+	1.16	+	3.73
055 Other Fabrics	1.1016	222.36	220.25	213.71	+	0.96	+	4.05
056 Silk & Reyon Fabrics	0.7350	190.96	188.44	181.33	+	1.34	+	5.31
057 Towels	0.1235	267.20	267.20	265.62	+	0.00	+	0.59
058 Blankets	0.0029	243.93	243.93	235.86	+	0.00	+	3.42

## Annexure B: Wholesale Price Indices by Major Groups &amp; Commodities

(2007-08=100)

Item and Specification	Weight	Index Numbers			% Change in May 2016 over		
		May 16	Apr 16	May 15	Apr 2016	May 2015	
059 Bed Sheets	0.0913	256.29	256.29	256.29	+	0.00	+ 0.00
060 Quilts	0.0019	198.00	198.00	196.84	+	0.00	+ 0.59
061 Woolen Carpets	0.0383	181.55	181.55	132.14	+	0.00	+ 37.39
062 Synthetic Carpets	0.0566	129.25	129.25	126.27	+	0.00	+ 2.36
063 Hosiery Products	0.8832	222.52	222.52	218.08	+	0.00	+ 2.04
064 Readymade Garments	1.0576	194.45	193.27	188.82	+	0.61	+ 2.98
<b>Leather Products</b>	<b>0.7115</b>	<b>198.83</b>	<b>198.73</b>	<b>199.09</b>	<b>+</b>	<b>0.05</b>	<b>- 0.13</b>
065 Leather Without Hair	0.2973	221.97	221.97	221.97	+	0.00	+ 0.00
066 Other Leather N.E.C	0.2567	207.31	207.31	212.39	+	0.00	- 2.39
067 Footwears	0.1575	141.36	140.89	134.22	+	0.33	+ 5.32
<b>Other Transportable Goods</b>	<b>22.3659</b>	<b>162.49</b>	<b>162.91</b>	<b>184.03</b>	<b>-</b>	<b>0.26</b>	<b>- 11.70</b>
068 Timber	0.0165	220.36	220.36	202.05	+	0.00	+ 9.06
069 Printing Paper	0.4279	161.82	161.82	164.56	+	0.00	- 1.67
070 Hard Board	0.1579	197.92	197.92	197.92	+	0.00	+ 0.00
071 Coke	0.2797	163.45	163.45	163.45	+	0.00	+ 0.00
072 Motor Spirit	1.5336	108.54	108.54	125.47	+	0.00	- 13.49
073 Diesel Oil	5.2664	136.30	136.30	178.33	+	0.00	- 23.57
074 Kerosine Oil	0.2151	115.11	115.11	178.93	+	0.00	- 35.67
075 Furnace Oil	3.2664	62.54	58.58	114.06	+	6.76	- 45.17
076 Mobil Oil	0.7114	196.00	196.00	200.65	+	0.00	- 2.32
077 Chemicals	1.7720	178.78	182.61	194.51	-	2.10	- 8.09
078 Dyeing Material	0.1539	146.55	146.55	146.55	+	0.00	+ 0.00
079 Fertilizers	2.8657	256.25	262.47	272.00	-	2.37	- 5.79
080 Pesticides	0.2763	312.37	312.37	293.74	+	0.00	+ 6.34
081 Insecticides	0.1276	134.92	135.79	141.69	-	0.64	- 4.78
082 Paints & Varnishes	0.1916	295.36	295.36	291.69	+	0.00	+ 1.26
083 Medicines	1.1428	161.67	160.98	145.19	+	0.43	+ 11.35
084 Soaps & Detergents	0.8168	183.12	182.24	180.40	+	0.48	+ 1.51
085 Auto Tyres	0.2703	181.25	184.65	191.36	-	1.84	- 5.28
086 Plastic Products	0.4550	227.58	226.58	225.35	+	0.44	+ 0.99
087 Glass sheets	0.2089	231.30	231.30	230.11	+	0.00	+ 0.52
088 Other Glass Articles	0.1635	254.36	243.63	243.63	+	4.40	+ 4.40
089 Ceramics & Sanitary Fixture	0.0244	230.06	227.51	219.45	+	1.12	+ 4.83
090 Bricks, Blocks & Tiles	0.1566	220.40	217.83	210.12	+	1.18	+ 4.89
091 Cement	1.8145	205.35	205.87	207.25	-	0.25	- 0.92
092 Bed Foam	0.0006	167.67	167.67	156.67	+	0.00	+ 7.02
093 Matches	0.0505	162.62	162.62	162.62	+	0.00	+ 0.00
<b>Metal Product, Machinery &amp; Eq</b>	<b>8.7156</b>	<b>172.56</b>	<b>171.22</b>	<b>172.74</b>	<b>+</b>	<b>0.78</b>	<b>- 0.10</b>
094 Pig Iron	0.0593	128.97	128.97	128.97	+	0.00	+ 0.00
095 Steel Bar & Sheets	1.4022	127.17	127.90	139.25	-	0.57	- 8.68
096 Pipe Fittings	0.0780	193.63	193.06	191.94	+	0.30	+ 0.88
097 Steel Products	0.3879	176.99	176.99	173.88	+	0.00	+ 1.79
098 Engines & Motors	0.0046	109.24	109.24	109.07	+	0.00	+ 0.16
099 Vacuum Pumps	0.0155	114.95	114.95	115.39	+	0.00	- 0.38
100 Air Conditioners	0.0049	201.18	201.18	199.53	+	0.00	+ 0.83
101 Cultivators	0.0551	219.76	219.76	219.76	+	0.00	+ 0.00
102 Chuff Cutter	0.1293	149.20	149.20	149.20	+	0.00	+ 0.00
103 Tractors	0.0028	205.43	205.43	214.54	+	0.00	- 4.25
104 Lathe Machines	0.0525	208.81	208.81	208.81	+	0.00	+ 0.00
105 Concrete Mixture	0.0107	138.83	138.83	138.83	+	0.00	+ 0.00
106 Fridge, WashM, SewM, Fans, Iron	1.1645	201.77	200.02	198.30	+	0.87	+ 1.75
107 Electric Wires	0.0912	195.19	195.19	187.86	+	0.00	+ 3.90
108 Lighting Equipments	1.4431	169.52	167.30	168.19	+	1.33	+ 0.79
109 Radio & Television	0.1843	129.97	126.49	126.49	+	2.75	+ 2.75
110 Motor Vehicles	0.0244	185.25	185.25	183.03	+	0.00	+ 1.21
111 Motorcycles	0.2570	125.89	125.89	125.89	+	0.00	+ 0.00
112 Bicycles	3.3483	187.65	185.63	185.63	+	1.09	+ 1.09