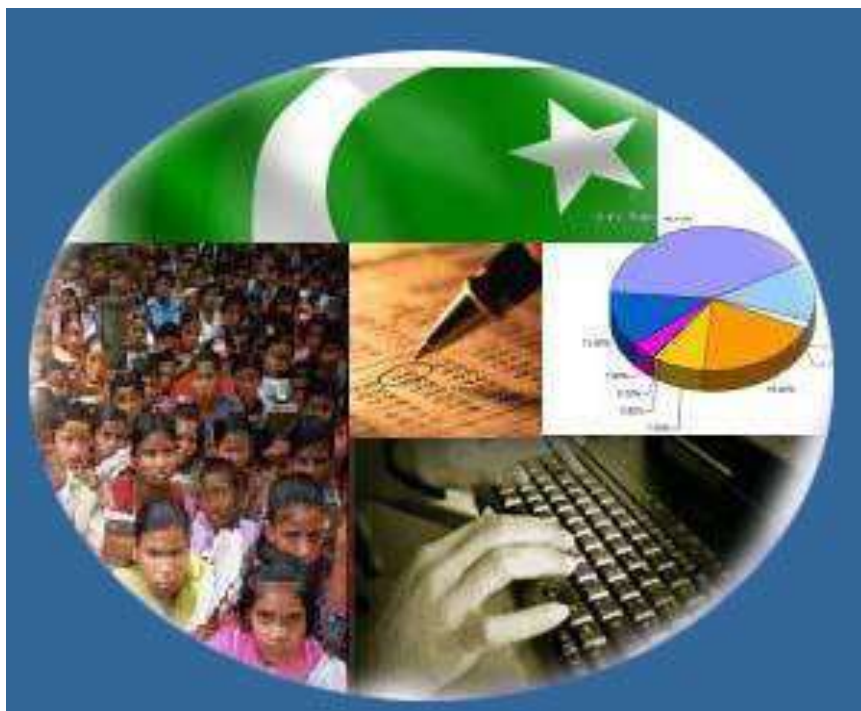




Monthly Review on Price Indices



June, 2016
(Base 2007-08)

Government of Pakistan
Statistics Division
Pakistan Bureau of Statistics
Islamabad

Inflation in Brief

1. CPI inflation General increased by 3.2% on year-on-year basis in June 2016 as compared to an increase of 3.2% in the previous month and 3.2% in June 2015. On month-on-month basis, it increased by 0.6% in June 2016 as compared to decrease of 0.2% in the previous month and an increase of 0.6% in June 2015.
2. Core inflation measured by non-food non-energy CPI (Core NFNE) increased by 4.6% on (YoY) basis in June 2016 as compared to increase of 4.6% in the previous month and 4.6% in June 2015. On (MoM) basis, it increased by 0.1% in June 2016 as compared to increase of 0.2% in previous month and an increase of 0.1% in June 2015.
3. Core inflation, measured by 20% weighted trimmed mean CPI (Core Trimmed) increased by 3.7% on (YoY) basis in June 2016 as compared to 3.6% in the previous month and by 3.8% in June 2015. On (MoM) basis, it increased by 0.2% in June 2016 as compared to an increase of 0.2% in the previous month and 0.2% in June 2015.
4. SPI inflation on YoY increased by 0.7% in June 2016 as compared to an increase of 0.6% a month earlier and increase of 1.1 % in June 2015. On MoM basis, it increased by 1.1% in June 2016 as compared to a decrease of 1.0% a month earlier and an increase of 1.0% in June, 2015.
5. WPI inflation on YoY basis showed increase by 0.2% in June 2016 as compared to no change a month earlier and a decrease of 2.0% in June 2015. WPI inflation on MoM basis increased by 1.4% in June 2016 as compared to increase of 0.6% a month earlier and an increase of 1.2% in June 2015.
6. Figures 1 and 2 show graphically the data of Table 1. Table 1.1 shows "Period Average" and "YoY" percent changes in indices of three years.

Table 1: Inflation (%) (Base 2007-08)

Period	CPI						Core Inflation				SPI**		WPI	
	General		Food		Non-food		NFNE*		Trimmed		YoY	MoM	YoY	MoM
	YoY	MoM	YoY	MoM	YoY	MoM	YoY	MoM	YoY	MoM				
May 15	3.2	0.8	3.0	1.8	3.3	0.0	4.9	0.0	3.9	0.1	1.2	1.3	-1.8	1.1
Jun-15	3.2	0.6	3.2	1.2	3.2	0.2	4.6	0.1	3.8	0.2	1.1	1.0	-2.0	1.2
Jul-15	1.9	0.4	0.6	0.1	2.8	0.6	4.1	0.6	2.9	0.5	-0.5	0.3	-2.9	-0.4
Aug-15	1.8	0.2	0.4	0.3	2.8	0.2	4.0	0.1	2.8	0.1	-1.5	-0.2	-2.9	-0.5
Sep-15	1.3	-0.1	-0.1	-0.4	2.4	0.1	3.4	0.1	2.8	0.1	-1.3	0.5	-3.5	-0.5
Oct 15	1.6	0.5	0.5	0.4	2.4	0.5	3.4	0.0	2.8	0.0	-0.1	1.2	-2.7	0.5
Nov 15	2.7	0.6	2.2	1.2	3.2	0.2	4.0	0.1	2.9	0.2	2.1	1.0	-1.7	0.0
Dec 15	3.2	-0.6	2.7	-1.6	3.6	0.2	4.1	0.2	2.7	0.2	2.9	-0.7	-0.4	-0.6
Jan 16	3.3	0.2	2.5	-0.6	3.9	0.8	4.3	0.9	3.0	0.6	3.1	-0.7	0.1	-0.5
Feb 16	4.0	-0.3	3.7	-0.7	4.2	0.0	4.5	0.2	3.6	0.1	3.6	-0.5	0.6	-0.6
Mar 16	3.9	0.1	3.7	0.5	4.1	-0.1	4.7	0.2	3.8	0.2	3.5	-0.2	0.2	-0.4
April 16	4.2	1.5	4.7	2.4	3.8	1.0	4.4	1.1	3.8	0.6	2.9	-0.1	0.6	1.3
May 16	3.2	-0.2	2.1	-0.7	3.9	0.2	4.6	0.2	3.6	0.2	0.6	-1.0	0.0	0.6
June 16	3.2	0.6	2.3	1.4	3.8	0.1	4.6	0.1	3.7	0.2	0.7	1.1	0.2	1.4

*NFNE is non-food non-energy, ** SPI for quintile 1. Digits 0.0* are due to rounding off.

Table 1.1 : Period Average and YoY % Changes of Indices (Base 2007-08)

Index	Averages July-June % Changes			June over June % Changes		
	2015-16	2014-15	2013-14	2016	2015	2014
CPI	2.86	4.53	8.62	3.19	3.16	8.22
SPI	1.31	1.74	9.30	0.74	1.12	6.24
WPI	-1.05	-0.30	8.15	0.24	-1.97	7.73

Figure 1: CPI Inflation YoY, Special Indices

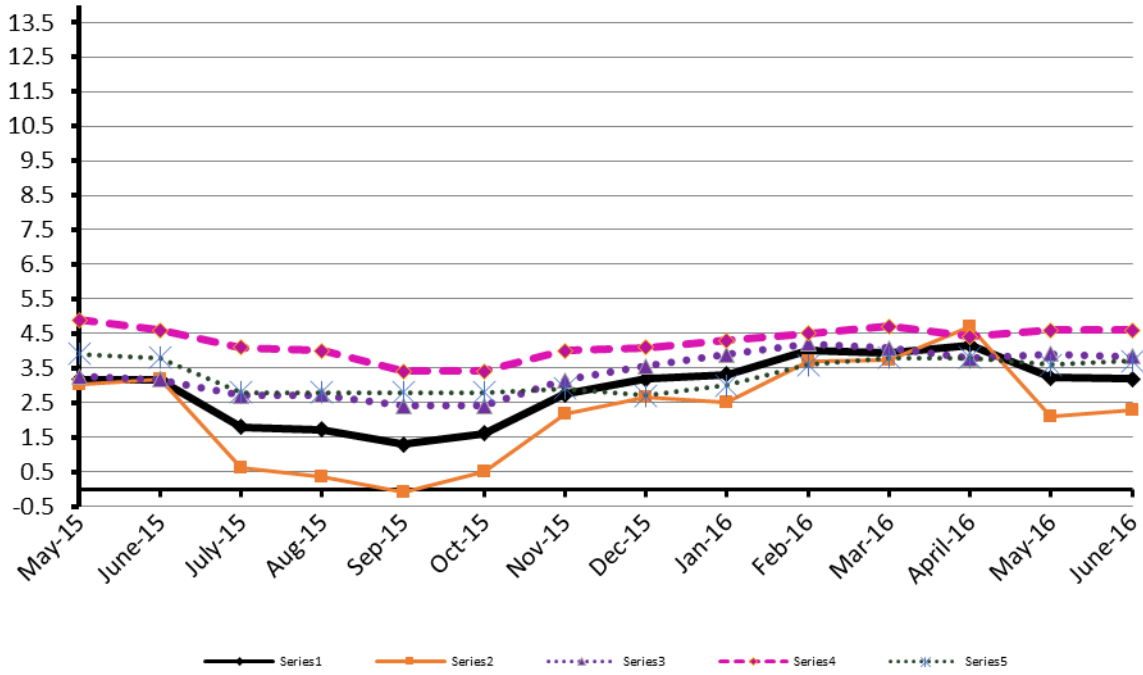
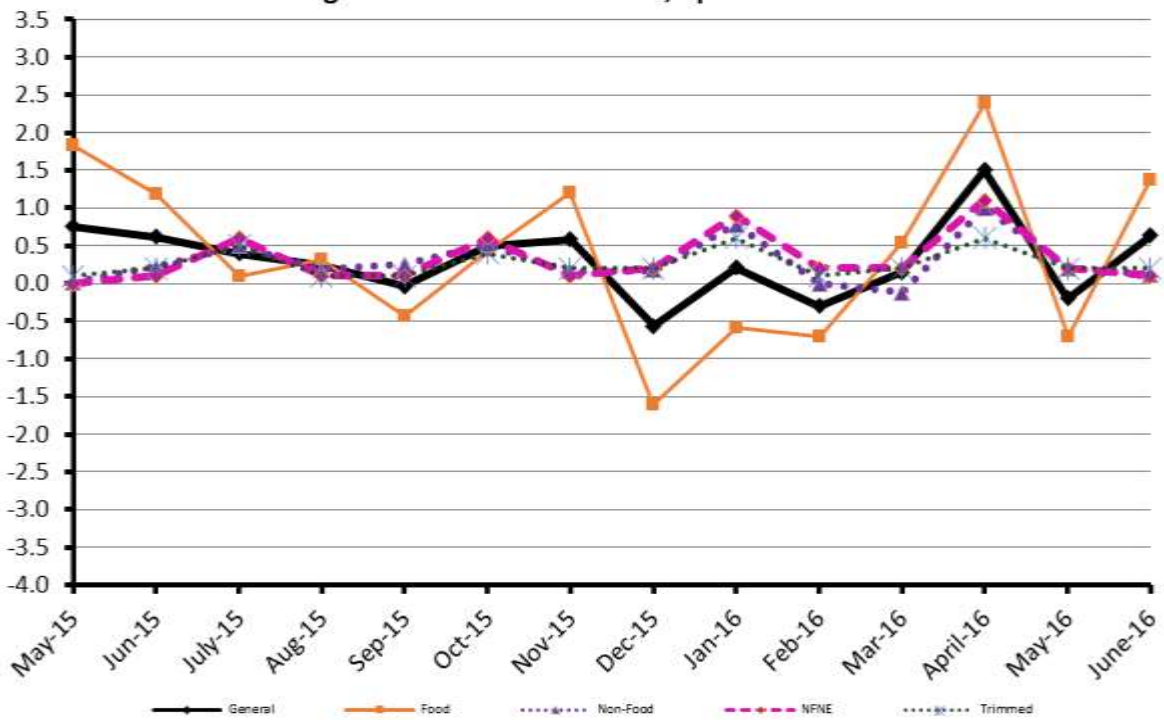


Figure 2: CPI Inflation MoM, Special Indices



II. Consumer Price Index (CPI)

The Consumer Price Index of June 2016, has increased by 0.64% over May 2016 and increased by 3.19% over corresponding month of the last year i.e. June 2015.

Table 2 : Consumer Price Index by Group of Commodities and Services (Base 2007-08)

No	Group	Group Weight (%)	Indices			% Change June 2016 Over		Impact (In % points) June 2016 Over	
			June 2016	May 2016	June 2015	May 2016	June 2015	May 2016	June 2015
	General	100.00	207.30	205.99	200.89	0.64	3.19	0.64	3.19
1.	Food & Non-alcoholic Bev.	34.83	222.39	219.65	219.66	1.25	1.24	0.46	0.47
	<i>Non-perishable Food Items</i>	29.84	221.66	221.23	217.77	0.19	1.79	0.06	0.58
	<i>Perishable Food Items</i>	4.99	226.76	210.21	230.97	7.87	-1.82	0.40	-0.10
2.	Alcoholic Bev.& Tobacco	1.41	360.74	346.08	304.76	4.24	18.37	0.10	0.39
3.	Clothing & Footwear	7.57	229.34	228.31	218.56	0.45	4.93	0.04	0.41
4.	Housing, Water, Electricity, Gas & Fuels	29.41	187.17	187.12	177.76	0.03	5.29	0.01	1.38
5.	Furnishing & Household Equipment Maintenance	4.21	221.48	220.71	211.58	0.35	4.67	0.02	0.21
6.	Health	2.19	187.68	187.43	178.55	0.13	5.11	0.00	0.10
7.	Transport	7.20	169.34	169.31	178.59	0.02	-5.18	0.00	-0.33
8.	Communication	3.22	130.85	130.77	130.30	0.06	0.42	0.00	0.01
9.	Recreation & Culture	2.02	195.70	195.79	192.98	-0.05	1.41	0.00	0.03
10.	Education	3.94	224.60	224.19	209.17	0.18	7.38	0.01	0.30
11.	Restaurants & Hotels	1.23	263.41	263.16	249.24	0.09	5.69	0.00	0.09
12.	Miscellaneous	2.76	233.42	233.52	223.37	-0.04	4.50	0.00	0.14

Main contributors to month-on-month and year-on-year percentage changes are given below and detail is given in Annexure A.

1. **Month-on-month** Top few commodities which varied from previous month i.e. May 2016 are given below:-

Food Items Increased: Tomatoes (61.11%), Potatoes (45.50%), eggs (8.51%), Fresh Vegetables (5.9%), Gram whole (5.68%), Cigarettes (4.27%), Fresh Fruits (2.51%), Besan (2.39%), Pulse Gram (2.2%), and Rice (1.4%).

Decreased: Chicken (6.74%) and Onion (2.22%).

Non-food Items Increased: Marriage Hall Charges (1.9%), Tailoring (1.06%) and Household Servant (1.03%) .

Decreased: Kerosene Oil (0.9%) and Motor Vehicle Accessories (0.63%).

2. **Year-on-Year:** Top few commodities which varied from previous year i.e. June 2015 are given below:-

Food Items Increased: Pulse Gram (49.43%), Pulse Mash (48.1%), Besan (41.86%), Gram Whole (41.44%), Potatoes (20.13%) , Cigarettes (18.43%), Betel Leaves and Nuts (13.23%), Tea (10.3%) , Pulse Masoor (9.11%). and Fresh Fruits (8.57%).

Decreased: Tomatoes (41.53%), Onion (31.2%), Chicken (19.58%), Rice (10.81%), Cooking Oil (7.05%), Eggs (4.94%) and Pulse Moong (3.74%).

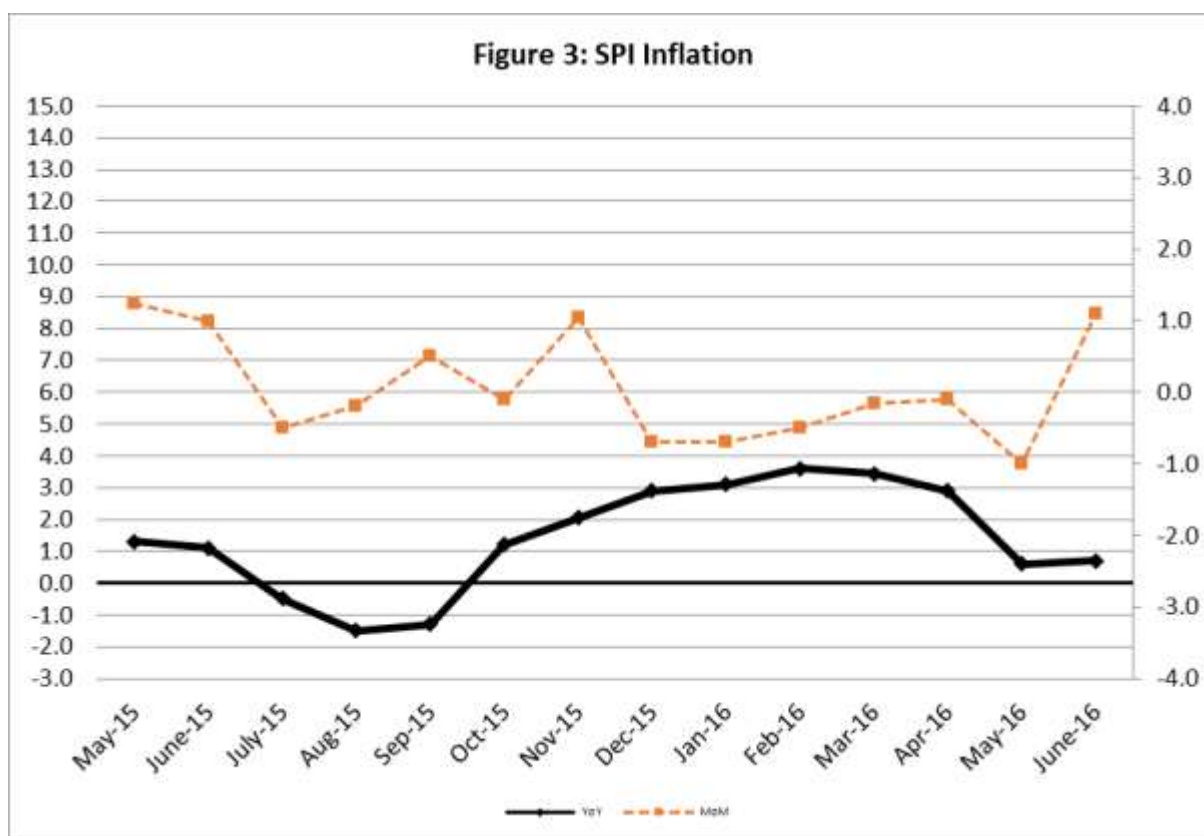
Non-food Items Increased: Gas (9.92%), Household Servants (8.5%), Water Supply (7.79%), Tailoring (7.68%), Education (7.38%), Construction Wage Rates (7.37%), Doctor (MBBS) Clinic Fee (7.25%), Readymade Garments (6.47%) and Cleaning & Laundry (6.3%).

Decreased: Kerosene Oil (13.41%), **Motor Fuel** (12.26%) and Motor Vehicle Accessories (5.48%).

III. Sensitive Price Indicator

Quintile-wise percentage changes YoY and MoM are given below in Table 3. The series from May 2015 to June 2016 is also graphed below in Figure 3.

Table 3: Sensitive Price Indicator (Base 2007-08)					
Quintiles	Indices			% Change June 2016 over	
	June 2016	May 2016	June 2015	May 2016	June 2015
1	206.86	204.57	205.34	1.12	0.74
2	214.41	212.31	211.83	0.99	1.22
3	215.75	213.44	215.43	1.08	0.15
4	220.46	218.17	217.37	1.05	1.42
5	217.63	215.50	214.82	0.99	1.31
Combined	216.58	214.35	214.29	1.04	1.07



IV. Wholesale Price Index

The Wholesale Price Index for June, 2016 increased by 1.38% over May, 2016. It increased by 0.24% over the corresponding month of the last year. YoY and MoM movements, from May, 2015 to June, 2016 are also graphed below in Figure 4.

Table 4 : Wholesale Price Index by Group of Commodities (Base 2007-08)

No.	Group	Group Weight (%)	Indices			% Change June, 2016 over		Impact (in %age points) June, 2016 over	
			June 2016	May 2016	June 2015	May 2016	June 2015	May 2016	June 2015
	General	100.00	210.88	208.01	210.37	1.38	0.24	1.38	0.24
1.	Agriculture, Forestry & Fishery Products	25.77	239.12	233.26	227.46	2.51	5.13	0.73	1.43
2.	Ores & Minerals, Electricity, Gas & Water	12.04	244.28	244.11	245.32	0.07	-0.42	0.01	-0.06
3.	Food Products, Beverages & Tobacco, Textiles, Apparel & Leather Products	31.11	218.71	215.79	209.87	1.35	4.21	0.44	1.31
	i. Food Products, Bev. & Tobacco	20.07	233.44	229.26	222.54	1.82	4.90	0.40	1.04
	ii. Textiles and Apparel	10.33	191.44	190.78	186.42	0.35	2.69	0.03	0.25
	iii. Leather Products	0.71	199.07	198.83	193.00	0.12	3.15	0.00	0.02
4.	Other Transportable Goods except Metal Products, Machinery & Equipment	22.37	164.46	162.49	187.23	1.21	-12.16	0.21	-2.42
5.	Metal Products, Machinery & Equipment	8.72	172.48	172.56	172.71	-0.05	-0.13	0.00	-0.01

Main contributors to month-on-month and year-on-year percentage changes are given below and detail is given in Annexure B.

1. **Month-on-month** Top few commodities which varied from previous month i.e. May, 2016 are given below:-

Increased: Potatoes(58.77%), Vegetables (21.96%), Tobacco Products (11.54%), Other Glass Articles(10.76%), Eggs (9.93%), Fresh Fruits (7.85%) and Hard Board (7.37%).

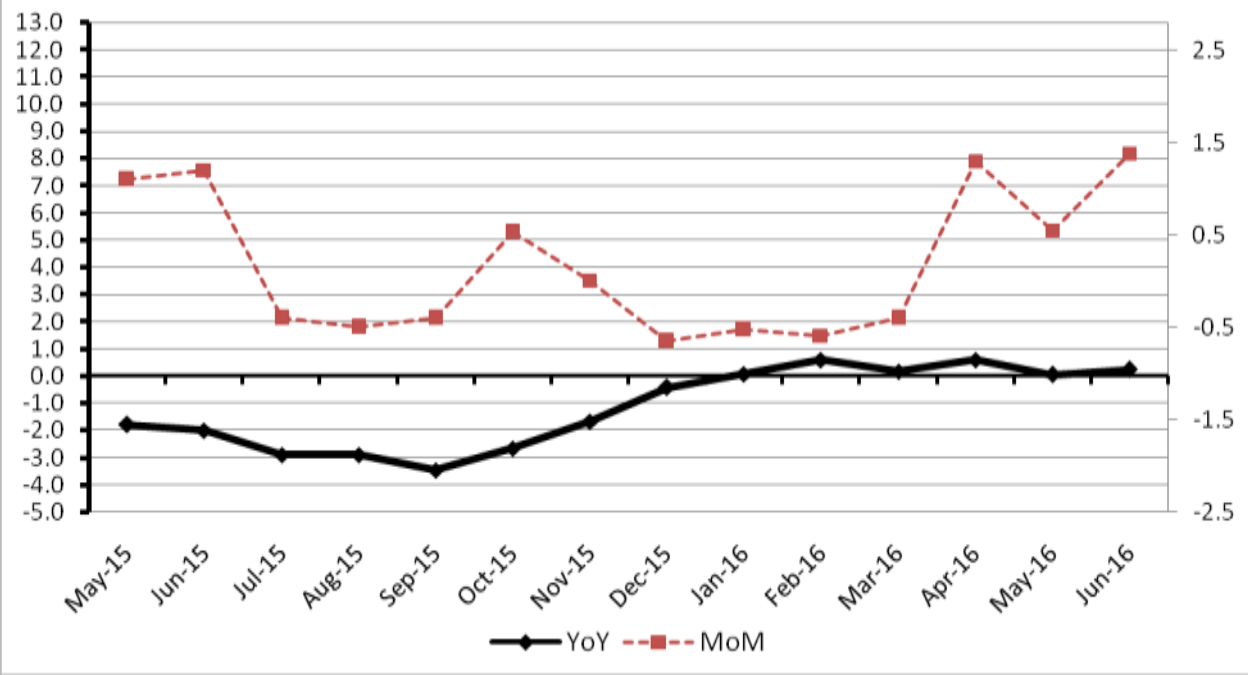
Decreased: Poultry (7.67%), Stimulant and Spice Crops (3.36%), Maiz (2.52%) and Fertilizer (2.28%).

2. **Year-on-year** Top few commodities which varied from previous year i.e. June, 2015 are given below:-

Increased: Fish (50.56%), Other Cereal Flour (46.31%), Woolen carpets (37.39%), Pulses (25.34%), Potatoes (22.68%), Tobacco Products (22.05%), Oil cakes (17.14%), Other Glass Articles (15.64%), Medicines (11.91%), Coffee & Tea (11.33%) and Unmanufactured Tobacco (10.36%)..

Decreased: Stimulant & Spice Crops (38.01%), Kerosene oil (35.67%),Furnace oil (35.09%), Coal (28.07%), Diesel oil (27.31%), Motor spirit (17.39%), Poultry (16.40%) and Rice (10.52%).

Figure 4: WPI Inflation



Annexure A: Consumer Price Index Numbers by Commodity Groups & Commodities (2007-08=100)

Item and Specification	Weight	Index Numbers			% Change in Jun 2016 over	
		Jun 16	May 16	Jun 15	May 2016	Jun 2015
General	100.0000	207.30	205.99	200.89	+ 0.64	+ 3.19
Food and non-alcoholic Bevera	34.8343	222.39	219.65	219.66	+ 1.25	+ 1.24
01 Wheat	0.3477	190.65	190.74	193.72	- 0.05	- 1.58
02 Wheat Flour	4.1648	207.51	208.56	207.87	- 0.50	- 0.17
03 Wheat Product	0.0959	213.52	213.99	211.77	- 0.22	+ 0.83
04 Besan	0.1500	304.78	297.68	214.84	+ 2.39	+ 41.86
05 Rice	1.5821	156.23	154.07	175.16	+ 1.40	- 10.81
06 Cereals	0.1563	248.23	248.06	241.01	+ 0.07	+ 3.00
07 Bakery & Confectionary	1.1550	213.83	212.69	208.28	+ 0.54	+ 2.66
08 Nimco	0.4574	248.02	245.24	239.40	+ 1.13	+ 3.60
09 Meat	2.4303	261.83	261.05	247.52	+ 0.30	+ 5.78
10 Chicken	1.3596	193.47	207.46	240.58	- 6.74	- 19.58
11 Fish	0.2970	218.30	218.98	213.54	- 0.31	+ 2.23
12 Milk Fresh	6.6800	263.49	261.88	254.57	+ 0.61	+ 3.50
13 Milk Products	0.6338	254.37	253.26	246.89	+ 0.44	+ 3.03
14 Milk Powder	0.1129	236.54	235.69	226.31	+ 0.36	+ 4.52
15 Eggs	0.4555	163.75	150.91	172.26	+ 8.51	- 4.94
16 Mustard Oil	0.0952	153.99	153.93	151.35	+ 0.04	+ 1.74
17 Cooking Oil	1.7538	133.28	132.88	143.39	+ 0.30	- 7.05
18 Vegetable Ghee	2.0714	137.43	137.59	140.50	- 0.12	- 2.19
19 Dry Fruits	0.2543	263.76	263.17	254.52	+ 0.22	+ 3.63
20 Fresh Fruits	1.8649	266.67	260.15	245.63	+ 2.51	+ 8.57
21 Pulse Masoor	0.2712	213.02	211.25	195.23	+ 0.84	+ 9.11
22 Pulse Moong	0.2336	299.89	299.54	311.53	+ 0.12	- 3.74
23 Pulse Mash (Washed)	0.2098	376.13	374.98	253.97	+ 0.31	+ 48.10
24 Pulse Gram	0.2361	318.34	311.49	213.03	+ 2.20	+ 49.43
25 Gram Whole	0.1616	273.48	258.79	193.36	+ 5.68	+ 41.44
26 Beans	0.0269	234.45	234.91	236.80	- 0.20	- 0.99
27 Potatoes	0.4699	198.22	136.23	165.00	+ 45.50	+ 20.13
28 Onion	0.5340	192.54	196.92	279.84	- 2.22	- 31.20
29 Tomatoes	0.4419	122.20	75.85	209.01	+ 61.11	- 41.53
30 Fresh Vegetables	1.6802	228.83	216.09	223.39	+ 5.90	+ 2.44
31 Sugar	1.0445	229.80	227.12	220.70	+ 1.18	+ 4.12
32 Gur	0.0220	274.05	271.20	272.24	+ 1.05	+ 0.66
33 Honey	0.0446	307.78	307.78	303.39	+ 0.00	+ 1.45
34 SweetMeat	0.2483	241.30	241.33	235.81	- 0.01	+ 2.33
35 Beverages	1.1990	220.83	219.07	213.32	+ 0.80	+ 3.52
36 Jam, Tomato Ketchup & Pickles	0.2454	215.33	214.28	208.86	+ 0.49	+ 3.10
37 Condiments	0.2656	262.42	262.65	257.93	- 0.09	+ 1.74
38 Spices	0.5441	241.18	240.26	236.20	+ 0.38	+ 2.11
39 Tea	0.8377	255.87	256.86	231.98	- 0.39	+ 10.30
Alcoholic Beverages, Tobacco	1.4135	360.75	346.08	304.76	+ 4.24	+ 18.37
40 Cigarettes	1.3906	362.72	347.85	306.27	+ 4.27	+ 18.43
41 Betel Leaves & Nuts	0.0229	241.34	238.78	213.15	+ 1.07	+ 13.23
Clothing and footwear	7.5708	229.34	228.31	218.56	+ 0.45	+ 4.93
42 Cotton Cloth	1.7286	224.62	223.74	213.01	+ 0.39	+ 5.45
43 Woolen Cloth	0.8759	244.55	243.69	234.23	+ 0.35	+ 4.41
44 Readymade Garments	0.9739	236.72	235.32	222.33	+ 0.59	+ 6.47
45 Woolen Readymade Garments	0.3964	252.98	253.20	240.86	- 0.09	+ 5.03
46 Hosiery	0.5094	241.98	240.43	230.96	+ 0.64	+ 4.77
47 Dopatta	0.4412	240.75	239.65	232.70	+ 0.46	+ 3.46
48 Cleaning and Laundry	0.2110	253.34	253.01	238.32	+ 0.13	+ 6.30
49 Tailoring	0.8840	296.54	293.42	275.40	+ 1.06	+ 7.68
50 Footwear	1.5504	166.36	166.23	164.64	+ 0.08	+ 1.04
Housing, water, Elec., Gas an	29.4149	187.17	187.12	177.76	+ 0.03	+ 5.29
51 House Rent	21.8149	176.44	176.44	166.88	+ 0.00	+ 5.73
52 Construction Input Items	0.5623	244.53	243.86	239.17	+ 0.27	+ 2.24
53 Construction Wage Rates	0.3331	228.82	226.72	213.11	+ 0.93	+ 7.37
54 Water Supply	0.4971	161.60	161.10	149.92	+ 0.31	+ 7.79
55 Electricity	4.3985	238.10	238.10	231.52	+ 0.00	+ 2.84

Annexure A: Consumer Price Index Numbers by Commodity Groups & Commodities (2007-08=100)

Item and Specification	Weight	Index Numbers			% Change in Jun 2016 over	
		Jun 16	May 16	Jun 15	May 2016	Jun 2015
56 Gas	1.5756	158.08	158.08	143.81	+ 0.00	+ 9.92
57 Kerosene Oil	0.0057	193.53	195.28	223.49	- 0.90	- 13.41
58 Firewood Whole	0.2277	284.87	284.79	272.98	+ 0.03	+ 4.36
<i>Furnishing and household equi</i>	4.2082	221.48	220.71	211.59	+ 0.35	+ 4.67
59 Furniture	0.3315	211.58	211.36	205.27	+ 0.10	+ 3.07
60 Household Textiles	0.6489	221.22	220.62	209.43	+ 0.27	+ 5.63
61 Household Equipment	0.5936	178.21	178.29	175.10	- 0.04	+ 1.78
62 Utensils	0.3212	222.56	223.50	214.29	- 0.42	+ 3.86
63 Plastic Products	0.2547	207.23	206.97	202.65	+ 0.13	+ 2.26
64 Washing Soaps & Detergents	0.7893	226.76	226.67	222.38	+ 0.04	+ 1.97
65 Sewing Needle & Dr Cell	0.1496	208.80	208.58	198.97	+ 0.11	+ 4.94
66 Household Servant	1.0432	248.71	246.18	229.23	+ 1.03	+ 8.50
67 Marriage Hall Charges	0.0762	244.63	240.06	231.83	+ 1.90	+ 5.52
<i>Health</i>	2.1868	187.68	187.43	178.55	+ 0.13	+ 5.11
68 Drugs & Medicines	1.2667	153.48	153.11	148.37	+ 0.24	+ 3.44
69 Medical Equipments	0.0080	233.55	233.19	226.26	+ 0.15	+ 3.22
70 Doctor (MBBS) Clinic Fee	0.5904	260.45	260.45	242.85	+ 0.00	+ 7.25
71 Medical Tests	0.3217	187.65	187.44	178.21	+ 0.11	+ 5.30
<i>Transport</i>	7.2023	169.34	169.31	178.59	+ 0.02	- 5.18
72 Motor Vehicles	0.6630	165.17	165.23	163.41	- 0.04	+ 1.08
73 Motor Vehicle Accessories	0.2439	213.88	215.24	226.28	- 0.63	- 5.48
74 Motor Fuel	3.0269	135.58	135.44	154.52	+ 0.10	- 12.26
75 Mechanical Service	0.4552	224.68	224.39	216.12	+ 0.13	+ 3.96
76 Motor Vehicle Tax	0.1099	210.18	210.18	210.18	+ 0.00	+ 0.00
77 Transport Services	2.7034	193.15	193.15	197.35	+ 0.00	- 2.13
<i>Communication</i>	3.2198	130.85	130.77	130.30	+ 0.06	+ 0.42
78 Postal Services	0.0662	239.48	239.10	227.95	+ 0.16	+ 5.06
79 Communication & Apparatus	3.1536	128.57	128.49	128.25	+ 0.06	+ 0.25
<i>Recreation and culture</i>	2.0227	195.70	195.79	192.98	- 0.05	+ 1.41
80 Recreation & Culture	0.8634	128.89	129.15	128.25	- 0.20	+ 0.50
81 Text Books	0.5706	292.41	292.41	290.62	+ 0.00	+ 0.62
82 Newspapers	0.1934	175.49	175.49	175.42	+ 0.00	+ 0.04
83 Stationery	0.3953	211.89	211.82	201.99	+ 0.03	+ 4.90
<i>Education</i>	3.9431	224.60	224.19	209.17	+ 0.18	+ 7.38
84 Education	3.9431	224.60	224.19	209.17	+ 0.18	+ 7.38
<i>Restaurants and hotels</i>	1.2286	263.41	263.16	249.24	+ 0.09	+ 5.69
85 Readymade Food	1.2286	263.41	263.16	249.24	+ 0.09	+ 5.69
<i>Misc. goods and services</i>	2.7550	233.42	233.52	223.37	- 0.04	+ 4.50
86 Personal Care	1.4935	215.09	214.76	206.85	+ 0.15	+ 3.98
87 Cosmetics	0.3853	199.77	199.04	190.66	+ 0.37	+ 4.78
88 Blades	0.0322	195.16	195.16	185.88	+ 0.00	+ 4.99
89 Personal Equipments	0.8440	282.68	283.91	268.97	- 0.43	+ 5.10

Annexure B: Wholesale Price Indices by Major Groups & Commodities

(2007-08=100)

Item and Specification	Weight	Index Numbers			% Change in Jun 2016 over			
		Jun 16	May 16	Jun 15	May 2016	Jun 2015		
General	100.0000	210.88	208.01	210.37	+	1.38	+	0.24
Agriculture Forestry & Fisher	25.7674	239.12	233.26	227.46	+	2.51	+	5.13
001 Wheat	0.6297	202.00	199.04	194.99	+	1.49	+	3.60
002 Maize	0.6764	204.06	209.33	196.59	-	2.52	+	3.80
003 Rice	2.4413	146.08	143.34	163.26	+	1.91	-	10.52
004 Sorghum / Jowar	0.0214	283.56	286.07	314.96	-	0.88	-	9.97
005 Millet / Bajra	0.0374	198.98	193.10	200.42	+	3.05	-	0.72
006 Vegetables	1.2441	246.21	201.87	267.36	+	21.96	-	7.91
007 Fresh Fruits	1.5144	305.11	282.91	287.79	+	7.85	+	6.02
008 Dry Fruits	0.2478	247.44	251.32	240.69	-	1.54	+	2.80
009 Cotton Seeds	1.1511	263.29	251.49	240.08	+	4.69	+	9.67
010 Other Oil Seeds	0.0722	170.50	165.14	161.27	+	3.25	+	5.72
011 Edible Roots / Potatoes	0.2540	177.50	111.80	144.68	+	58.77	+	22.68
012 Stimulant & Spice Crops	0.1634	218.56	226.16	352.58	-	3.36	-	38.01
013 Pulses	0.4901	293.16	280.91	233.89	+	4.36	+	25.34
014 Sugar Crops	1.0725	286.34	286.34	286.29	+	0.00	+	0.02
015 Fibre Crops	5.3169	180.30	183.00	177.20	-	1.48	+	1.75
016 Unmanufactured Tobacco	0.0742	243.77	233.06	220.89	+	4.60	+	10.36
017 Poultry	0.5633	203.67	220.59	243.62	-	7.67	-	16.40
018 Raw Milk from Bovine Animals	7.0279	258.97	258.97	252.90	+	0.00	+	2.40
019 Eggs	0.5034	165.23	150.30	175.64	+	9.93	-	5.93
020 Raw Animal Materials / Wool	0.0351	174.27	175.56	174.22	-	0.73	+	0.03
021 Hides & Fur Skins, Raw	0.4834	150.46	151.80	156.85	-	0.88	-	4.07
022 Fuel Wood in Logs	0.0179	264.77	264.77	259.09	+	0.00	+	2.19
023 Fish Live Fresh or Chilled	1.7295	445.91	423.43	296.17	+	5.31	+	50.56
Ores/Minerals, Elec., Gas & W	12.0389	244.28	244.11	245.32	+	0.07	-	0.42
024 Coal not Agglomerated	0.7508	160.78	160.78	223.53	+	0.00	-	28.07
025 Natural Gas Liquified	5.7385	208.42	208.07	199.99	+	0.17	+	4.22
026 Salt & Pure Sodium Chloride	0.0584	252.31	252.31	252.31	+	0.00	+	0.00
027 Electrical Energy	5.4912	293.09	293.09	295.61	+	0.00	-	0.85
Food, Beverages, Tobacco, Textil	31.1122	218.71	215.79	209.87	+	1.35	+	4.21
Food Products, Beverages &	20.0718	233.44	229.26	222.54	+	1.82	+	4.90
028 Meat of Animals	3.4559	274.34	271.73	262.20	+	0.96	+	4.63
029 Vegetables & Fruit Juice	0.0058	208.33	203.24	199.38	+	2.50	+	4.49
030 Dried Fruits & Nuts	0.1733	238.46	242.58	228.54	-	1.70	+	4.34
031 Fruit Juices	0.3880	181.90	179.74	175.80	+	1.20	+	3.47
032 Vegetable Oils Refined	1.9242	151.97	151.60	153.66	+	0.24	-	1.10
033 Vegetable Ghee	1.5632	121.87	122.60	122.48	-	0.60	-	0.50
034 Oil Cakes	0.9611	232.54	226.23	198.51	+	2.79	+	17.14
035 Processed Liquid Milk	4.4437	250.18	248.90	251.52	+	0.51	-	0.53
036 Milk & Cream in Solid Form	0.0316	219.30	218.99	220.46	+	0.14	-	0.53
037 Ice Cream	0.0047	233.72	231.30	219.91	+	1.05	+	6.28
038 Dairy Products N.E.C	0.0117	248.26	248.01	243.80	+	0.10	+	1.83
039 Wheat Flour	2.3034	192.23	192.67	189.05	-	0.23	+	1.68
040 Other Cereal Flour	0.0604	284.71	275.08	194.60	+	3.50	+	46.31
041 Sugar Refined	1.7975	245.61	241.96	235.88	+	1.51	+	4.12
042 Chocolate	0.0139	101.06	101.06	99.19	+	0.00	+	1.89
043 Sugar Confectionary	0.0738	118.83	118.83	118.04	+	0.00	+	0.67
044 Coffee & Tea	0.7303	230.07	232.09	206.65	-	0.87	+	11.33
045 Spices	0.1449	190.22	189.79	189.97	+	0.23	+	0.13
046 Other Food Products	0.0336	292.52	292.52	292.02	+	0.00	+	0.17
047 Mineral Water	0.0207	195.81	194.37	187.86	+	0.74	+	4.23
048 Beverages	0.6303	172.44	172.44	171.95	+	0.00	+	0.28
049 Tobacco Products	1.2998	435.03	390.01	356.45	+	11.54	+	22.05
Textiles & Apparels	10.3289	191.44	190.78	186.42	+	0.35	+	2.69
050 Cotton Yarn	5.2491	175.50	175.29	171.27	+	0.12	+	2.47
051 Nylon Yarn	0.1719	147.08	147.08	150.22	+	0.00	-	2.09
052 Blended Yarn	0.1689	176.75	176.75	189.54	+	0.00	-	6.75
053 Woven Fabrics	0.0128	279.69	279.42	258.39	+	0.10	+	8.24
054 Cotton Fabrics	0.6343	209.07	208.84	201.34	+	0.11	+	3.84
055 Other Fabrics	1.1016	222.56	222.36	213.71	+	0.09	+	4.14

Annexure B: Wholesale Price Indices by Major Groups & Commodities

(2007-08=100)

Item and Specification	Weight	Index Numbers			% Change in Jun 2016 over	
		Jun 16	May 16	Jun 15	May 2016	Jun 2015
056 Silk & Reyon Fabrics	0.7350	191.10	190.96	181.33	+ 0.07	+ 5.39
057 Towels	0.1235	267.20	267.20	267.20	+ 0.00	+ 0.00
058 Blankets	0.0029	243.93	243.93	235.86	+ 0.00	+ 3.42
059 Bed Sheets	0.0913	256.29	256.29	256.29	+ 0.00	+ 0.00
060 Quilts	0.0019	195.68	198.00	196.84	- 1.17	- 0.59
061 Woolen Carpets	0.0383	181.55	181.55	132.14	+ 0.00	+ 37.39
062 Synthetic Carpets	0.0566	129.25	129.25	126.27	+ 0.00	+ 2.36
063 Hosiery Products	0.8832	222.52	222.52	220.66	+ 0.00	+ 0.84
064 Readymade Garments	1.0576	199.39	194.45	193.27	+ 2.54	+ 3.17
Leather Products	0.7115	199.07	198.83	193.00	+ 0.12	+ 3.15
065 Leather Without Hair	0.2973	221.97	221.97	212.68	+ 0.00	+ 4.37
066 Other Leather N.E.C	0.2567	207.31	207.31	206.27	+ 0.00	+ 0.50
067 Footwears	0.1575	142.43	141.36	134.22	+ 0.76	+ 6.12
Other Transportable Goods	22.3659	164.46	162.49	187.23	+ 1.21	- 12.16
068 Timber	0.0165	220.36	220.36	203.35	+ 0.00	+ 8.36
069 Printing Paper	0.4279	166.34	161.82	164.56	+ 2.79	+ 1.08
070 Hard Board	0.1579	212.50	197.92	197.92	+ 7.37	+ 7.37
071 Coke	0.2797	163.45	163.45	163.45	+ 0.00	+ 0.00
072 Motor Spirit	1.5336	108.54	108.54	131.39	+ 0.00	- 17.39
073 Diesel Oil	5.2664	136.30	136.30	187.52	+ 0.00	- 27.31
074 Kerosine Oil	0.2151	115.11	115.11	178.93	+ 0.00	- 35.67
075 Furnace Oil	3.2664	76.28	62.54	117.51	+ 21.97	- 35.09
076 Mobil Oil	0.7114	196.00	196.00	201.05	+ 0.00	- 2.51
077 Chemicals	1.7720	178.23	178.78	194.51	- 0.31	- 8.37
078 Dyeing Material	0.1539	146.55	146.55	146.55	+ 0.00	+ 0.00
079 Fertilizers	2.8657	250.41	256.25	272.17	- 2.28	- 8.00
080 Pesticides	0.2763	312.37	312.37	301.98	+ 0.00	+ 3.44
081 Insecticides	0.1276	135.64	134.92	141.69	+ 0.53	- 4.27
082 Paints & Varnishes	0.1916	295.36	295.36	291.69	+ 0.00	+ 1.26
083 Medicines	1.1428	162.48	161.67	145.19	+ 0.50	+ 11.91
084 Soaps & Detergents	0.8168	184.58	183.12	180.02	+ 0.80	+ 2.53
085 Auto Tyres	0.2703	181.25	181.25	191.36	+ 0.00	- 5.28
086 Plastic Products	0.4550	228.35	227.58	225.60	+ 0.34	+ 1.22
087 Glass sheets	0.2089	231.30	231.30	230.11	+ 0.00	+ 0.52
088 Other Glass Articles	0.1635	281.73	254.36	243.63	+ 10.76	+ 15.64
089 Ceramics & Sanitary Fixture	0.0244	231.59	230.06	219.58	+ 0.67	+ 5.47
090 Bricks, Blocks & Tiles	0.1566	218.86	220.40	209.47	- 0.70	+ 4.48
091 Cement	1.8145	208.51	205.35	207.25	+ 1.54	+ 0.61
092 Bed Foam	0.0006	167.67	167.67	156.67	+ 0.00	+ 7.02
093 Matches	0.0505	162.62	162.62	162.62	+ 0.00	+ 0.00
Metal Product, Machinery & Eq	8.7156	172.48	172.56	172.71	- 0.05	- 0.13
094 Pig Iron	0.0593	128.97	128.97	128.97	+ 0.00	+ 0.00
095 Steel Bar & Sheets	1.4022	125.30	127.17	138.84	- 1.47	- 9.75
096 Pipe Fittings	0.0780	193.63	193.63	193.53	+ 0.00	+ 0.05
097 Steel Products	0.3879	176.99	176.99	173.54	+ 0.00	+ 1.99
098 Engines & Motors	0.0046	109.24	109.24	109.07	+ 0.00	+ 0.16
099 Vacuum Pumps	0.0155	114.95	114.95	115.39	+ 0.00	- 0.38
100 Air Conditioners	0.0049	201.18	201.18	199.53	+ 0.00	+ 0.83
101 Cultivators	0.0551	219.76	219.76	219.76	+ 0.00	+ 0.00
102 Chuff Cutter	0.1293	149.20	149.20	149.20	+ 0.00	+ 0.00
103 Tractors	0.0028	205.43	205.43	214.54	+ 0.00	- 4.25
104 Lathe Machines	0.0525	208.81	208.81	208.81	+ 0.00	+ 0.00
105 Concrete Mixture	0.0107	138.83	138.83	138.83	+ 0.00	+ 0.00
106 Fridge,WashM,SewM,Fans,Iron	1.1645	201.88	201.77	198.62	+ 0.05	+ 1.64
107 Electric Wires	0.0912	195.19	195.19	187.86	+ 0.00	+ 3.90
108 Lighting Equipments	1.4431	170.34	169.52	168.19	+ 0.48	+ 1.28
109 Radio & Television	0.1843	133.46	129.97	126.49	+ 2.69	+ 5.51
110 Motor Vehicles	0.0244	185.25	185.25	183.03	+ 0.00	+ 1.21
111 Motorcycles	0.2570	125.89	125.89	125.89	+ 0.00	+ 0.00
112 Bicycles	3.3483	187.65	187.65	185.63	+ 0.00	+ 1.09