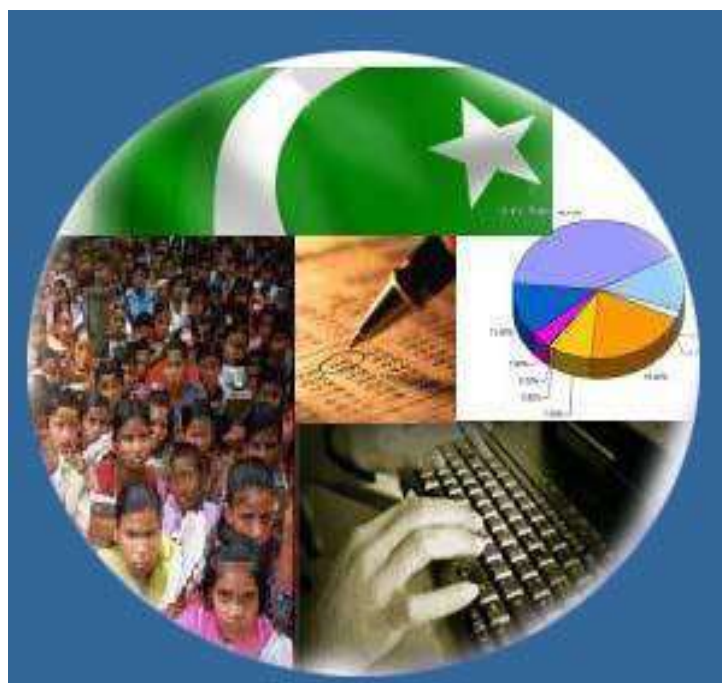




Monthly Review on Price Indices



April 2024
(Base Year 2015-16)

Government of Pakistan
Ministry of Planning, Development & Special Initiatives
Pakistan Bureau of Statistics
Islamabad

PRICE STATISTICS TEAM

S#	Name	Designation
1.	Dr. Naeem Uz Zafar	Chief Statistician
2.	Dr. Bahrawar Jan	Deputy Director General
3.	Mr. Naseer Ahmad	Director
4.	Dr. Ahtasham Gul	Chief Statistical Officer
5.	Mr. Adnan Shams	Statistical Officer
6.	Mr. Muhammad Mazhar	Statistical Officer
7.	Mr. Kashif Ali	Statistical Officer
8.	Miss. Umaira Zareen	Statistical Officer
9.	Mr. Kashif Yaqoob	Statistical Officer
10.	Mr. Umer Farooq	Statistical Assistant
11.	Mr. Ansar Mahmood	Statistical Assistant
12.	Mrs. Madiha Gulfraz	Statistical Assistant
13.	Mrs. Humail Fatima	Statistical Assistant
14.	Mr. Muhammad Asif	Statistical Assistant

IT & SOFTWARE TEAM

1.	Mr. Muhammad Ehtesham	Director (DP)
2.	Mrs. Sobia Munawar	Director (DP)
3.	Mr. Arsalan Bashir	Data Processing Officer
4.	Mr. Muhammad Kibria	Data Processing Officer
5.	Mr. Muhammad Irfan Bajwa	Data Processing Assistant

Inflation in Brief

- CPI inflation General**, increased to 17.3% on year-on-year basis in April 2024 as compared to an increase of 20.7% in the previous month and 36.4% in April 2023. On month-on-month basis, it decreased to 0.4% in April 2024 as compared to an increase of 1.7 in the previous month and an increase of 2.4% in April 2023.
- CPI inflation Urban**, increased to 19.4% on year-on-year basis in April 2024 as compared to an increase of 21.9% in the previous month and 33.5% in April 2023. On month-on-month basis, it decreased to 0.1% in April 2024 as compared to an increase of 1.4% in the previous month and an increase of 2.0% in April 2023.
- CPI inflation Rural**, increased to 14.5% on year-on-year basis in April 2024 as compared to an increase of 19.0% in the previous month and 40.7% in April 2023. On month-on-month basis, it decreased to 0.9% in April 2024 as compared to an increase of 2.1% in the previous month and an increase of 3.0% in April 2023.
- SPI inflation** on YoY increased to 21.6% in April 2024 as compared to an increase of 25.9% a month earlier and 42.1% in April 2023. On MoM basis, it decreased by 0.7% in April 2024 as compared to an increase of 2.1% a month earlier and an increase of 2.7% in April 2023.
- WPI inflation** on YoY basis increased to 13.9% in April 2024 as compared to an increase of 14.8% a month earlier and an increase of 33.4% in April 2023. On MoM basis, it decreased by 0.7% in April 2024 as compare to an increase of 1.3% in the previous month and an increase of 0.1% in corresponding month of last year i.e. April 2023.
- Figures 1 and 2 show graphically the yearly data of Table 1.a for Urban and Rural CPI while Table 1.1 shows "Period Average" and "YoY" percentage changes in indices of three years.

Table 1.a General Inflation (%) (Base 2015-16)																		
PERIOD	CPI														SPI**		WPI	
	General						Food				Non-Food							
	National		Urban		Rural		Urban		Rural		Urban		Rural		YoY	MoM	YoY	MoM
	YoY	MoM	YoY	MoM	YoY	MoM	YoY	MoM	YoY	MoM	YoY	MoM	YoY	MoM				
Jul-22	24.9	4.3	23.6	4.5	26.9	4.2	27.4	4.3	29.6	3.7	21.3	4.6	24.5	4.6	28.2	7.3	38.5	2.0
Aug-22	27.3	2.4	26.2	2.6	28.8	2.2	28.8	1.6	30.2	1.2	24.7	3.3	27.5	3.1	34.0	5.2	41.2	3.1
Sep-22	23.2	-1.2	21.2	-2.1	26.1	0.2	30.8	5.2	32.7	5.7	15.2	-6.6	20.1	-4.9	28.6	-1.4	38.9	1.4
Oct-22	26.6	4.7	24.6	4.5	29.5	5.0	34.7	4.5	37.2	6.1	18.2	4.5	22.4	3.9	24.0	-1.5	32.6	-0.5
Nov-22	23.8	0.8	21.6	0.4	27.2	1.3	29.7	0.0	33.5	0.5	16.4	0.6	21.4	2.1	27.1	6.1	27.7	0.0
Dec-22	24.5	0.5	21.6	0.3	28.8	0.7	32.7	0.0	37.9	0.1	14.8	0.6	20.7	1.4	27.8	0.2	27.1	-0.7
Jan-23	27.6	2.9	24.4	2.4	32.3	3.6	39.0	3.9	45.2	5.7	15.6	1.2	20.9	1.5	30.5	1.3	28.5	1.8
Feb-23	31.5	4.3	28.8	4.5	35.6	4.0	41.9	4.3	47.0	3.9	20.8	4.7	25.3	4.1	33.6	3.7	36.4	8.2
Mar-23	35.4	3.7	33.0	3.9	38.9	3.5	47.1	5.6	50.2	4.5	24.1	2.7	28.5	2.4	40.4	5.8	37.5	4.7
Apr-23	36.4	2.4	33.5	2.0	40.7	3.0	46.8	3.4	52.2	4.2	24.9	1.0	29.9	1.6	42.1	2.7	33.4	0.1
May-23	38.0	1.6	35.1	1.5	42.2	1.7	48.1	1.9	52.4	1.4	26.6	1.2	32.5	2.0	43.0	1.3	32.8	1.0
Jun-23	29.4	-0.3	27.3	0.1	32.4	-0.8	40.8	0.1	41.5	-1.6	18.7	0.1	23.8	0.1	34.9	0.2	22.4	-0.3
Jul-23	28.3	3.5	26.3	3.6	31.3	3.3	40.2	3.7	41.3	3.5	17.3	3.5	22.0	3.0	29.3	2.8	23.1	2.5
Aug-23	27.4	1.7	25.0	1.6	30.9	1.9	38.8	0.6	40.6	0.8	16.3	2.4	22.0	3.1	27.9	4.1	24.3	4.2
Sep-23	31.4	2.0	29.7	1.7	33.9	2.5	33.9	1.5	35.4	1.8	26.8	1.8	32.3	3.2	32.0	1.7	26.4	3.1
Oct-23	26.8	1.0	25.5	1.1	28.7	0.9	28.9	0.6	28.6	0.7	23.1	1.4	28.8	1.1	34.2	0.2	24.6	-1.9
Nov-23	29.2	2.7	30.4	4.3	27.5	0.4	29.8	0.8	29.2	1.0	30.9	7.0	25.9	-0.2	30.6	3.3	26.4	1.4
Dec-23	29.7	0.8	30.9	0.7	27.9	1.0	28.8	-0.7	29.3	0.1	32.4	1.8	26.4	1.8	35.3	3.8	27.3	0.0
Jan-24	28.3	1.8	30.2	1.8	25.7	1.9	27.4	2.8	25.1	2.3	32.3	1.1	26.3	1.4	36.2	2.0	27.0	1.5
Feb-24	23.1	0.0	24.9	0.2	20.5	-0.3	20.2	-1.5	19.0	-1.1	28.2	1.5	22.1	0.6	30.4	-0.8	18.7	1.1
Mar-24	20.7	1.7	21.9	1.4	19.0	2.1	16.6	2.4	17.1	2.8	25.8	0.7	21.0	1.4	25.9	2.1	14.8	1.3
Apr-24	17.3	-0.4	19.4	-0.1	14.5	-0.9	11.3	-1.3	9.5	-2.6	25.6	0.8	20.0	0.8	21.6	-0.7	13.9	-0.7

** SPI for quintile 1. Digits 0.0* are due to rounding off.

Core inflation (NFNE)

7. Measured by **non-food non-energy Urban** increased to 13.1% on (YoY) basis in April 2024 as compared to an increase of 12.8% in the previous month and 19.5% in April 2023. On (MoM) basis, it increased by 2.1% in April 2024 as compared to an increase of 0.1% in previous month, and an increase of 1.8% in corresponding month of last year i.e. April, 2023.
8. Measured by **non-food non-energy Rural** increased to 19.3% on (YoY) basis in April 2024 as compared to an increase of 20.0% in the previous month and 24.9% in April 2023. On (MoM) basis, it increased by 2.0% in April 2024 as compared to an increase of 0.8% in previous month, and an increase of 2.7% in corresponding month of last year i.e. April 2023.

Core inflation (Trimmed)

9. Measured by 20% **weighted trimmed mean Urban** increased to 13.4% on (YoY) basis in April 2024 as compared to 14.8% in the previous month and 28.6% in April 2023. On (MoM) basis, it increased by 0.5% in April 2024 as compared to an increase of 0.6% in the previous month and an increase of 1.5% in corresponding month of last year i.e. April 2023.
10. Measured by 20% **weighted trimmed mean Rural** increased to 15.0% on (YoY) basis in April 2024 as compared to 18.4% in the previous month and 37.3% in April 2023. On (MoM) basis, it increased to 0.6% in April 2024 as compared to an increase of 0.9% in the previous month and an increase of 2.0% in corresponding month of last year i.e. April 2023.

Table 1.b Core Inflation (%) (Base 2015-16)

Period	NFNE				Trimmed			
	Urban		Rural		Urban		Rural	
	YoY	MoM	YoY	MoM	YoY	MoM	YoY	MoM
Apr-23	19.5	1.8	24.9	2.7	28.6	1.5	37.3	2.0
May-23	20.0	1.2	26.9	2.5	30.5	1.5	38.8	2.0
Jun-23	18.5	0.7	25.2	0.9	22.9	0.8	29.9	0.1
Jul-23	18.4	1.2	24.6	1.2	21.7	1.9	28.7	2.4
Aug-23	18.4	1.8	25.9	2.8	23.0	1.5	30.5	1.4
Sep-23	18.6	1.0	27.3	2.6	25.0	1.1	33.3	1.7
Oct-23	18.5	1.2	26.7	1.0	24.6	0.6	30.4	0.7
Nov-23	18.6	0.9	25.9	1.4	22.9	0.1	27.9	0.5
Dec-23	18.2	0.8	25.1	0.9	23.3	0.3	28.0	0.7
Jan-24	17.8	1.1	24.6	1.2	22.1	1.0	25.8	1.2
Feb-24	15.5	0.3	21.9	0.4	16.0	0.3	21.3	0.4
Mar-24	12.8	0.1	20.0	0.8	14.8	0.6	18.4	0.9
Apr-24	13.1	2.1	19.3	2.0	13.4	0.5	15.0	0.6

Table 1.1 Period Average and Y-o-Y % Change

INDEX	Average July - April % Changes			April over April % Changes		
	2023-2024	2022-2023	2021-2022	2023-2024	2022-2023	2021-2022
CPI (National)	25.97	28.23	11.04	17.34	36.42	13.37
CPI (Urban)	26.27	25.92	10.94	19.40	33.50	12.23
CPI (Rural)	25.55	31.64	11.19	14.46	40.71	15.09
SPI	30.17	31.73	16.93	21.64	42.13	14.22
WPI	22.37	34.07	22.89	13.88	33.43	28.15

Figure 1: Urban Inflation - YoY, Special Indices

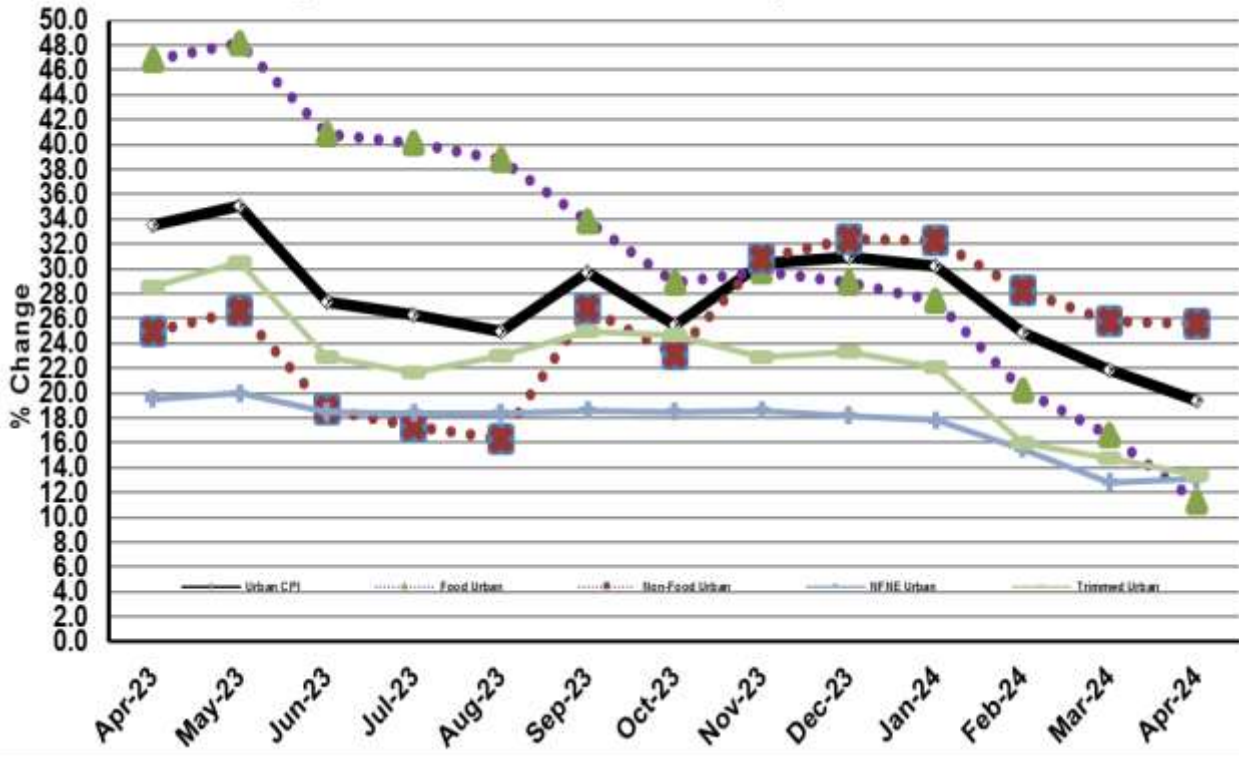


Figure 2: Rural Inflation - YoY, Special Indices

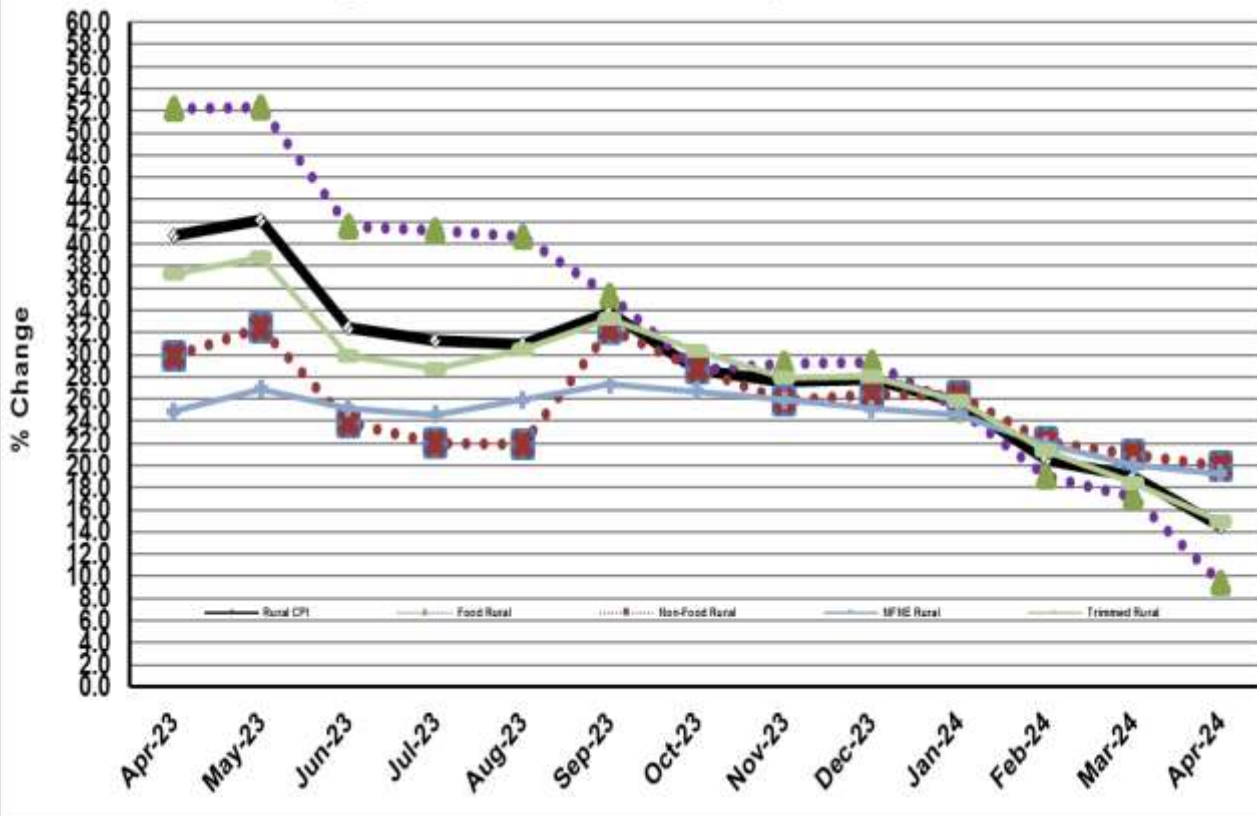


Figure 3: Urban Inflation - MoM, Special Indices

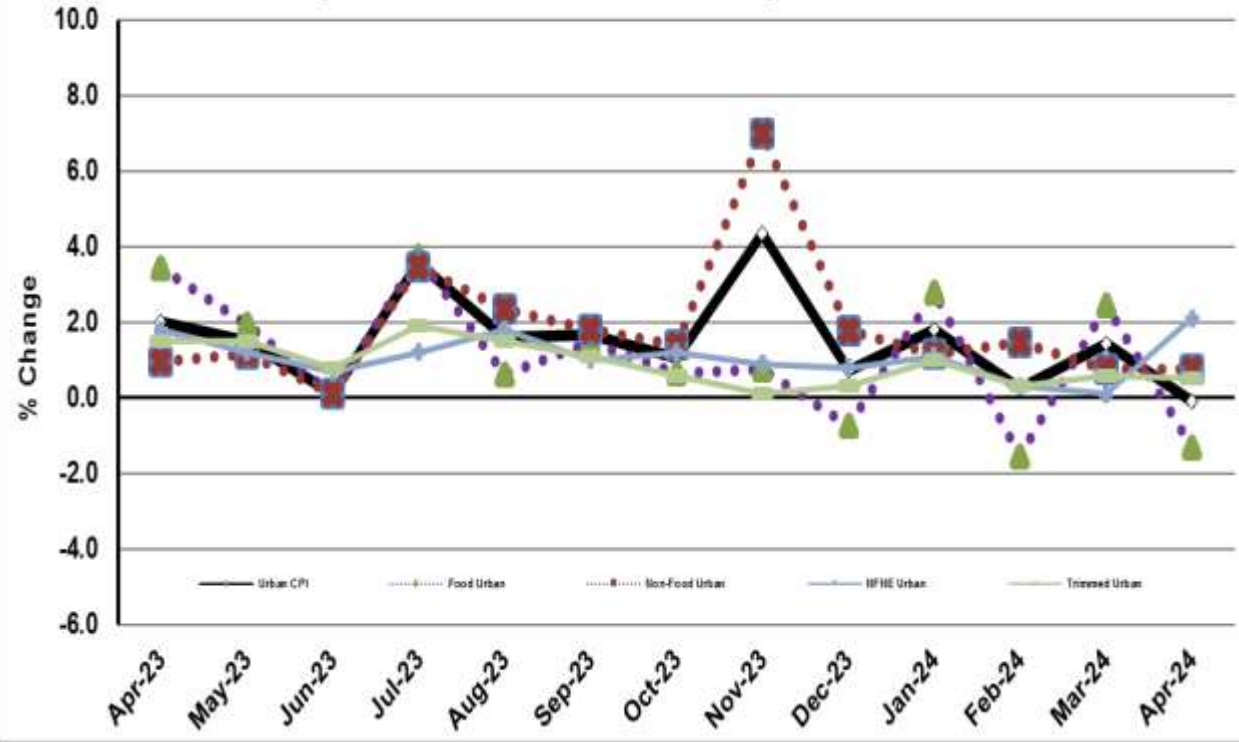


Figure 4: Rural Inflation - MoM, Special Indices

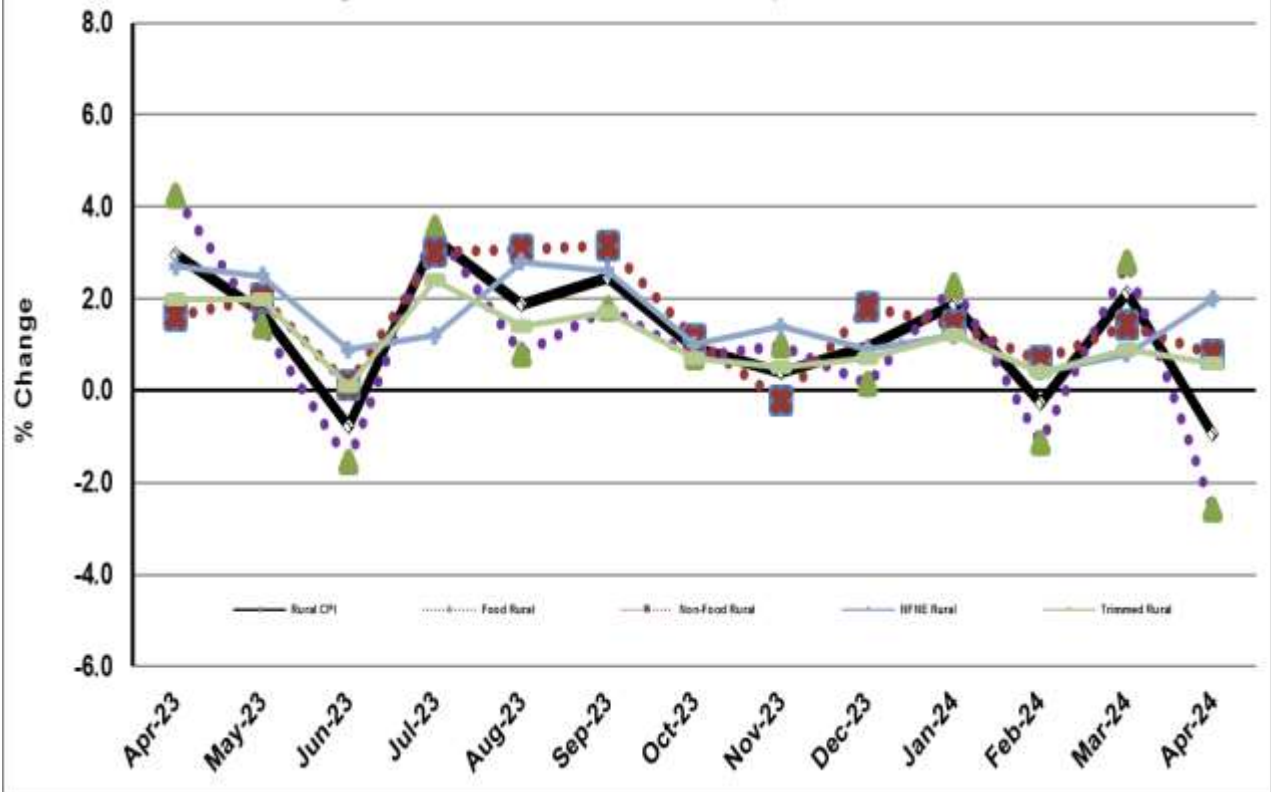


Figure 5: CPI YoY (National, Urban, Rural)

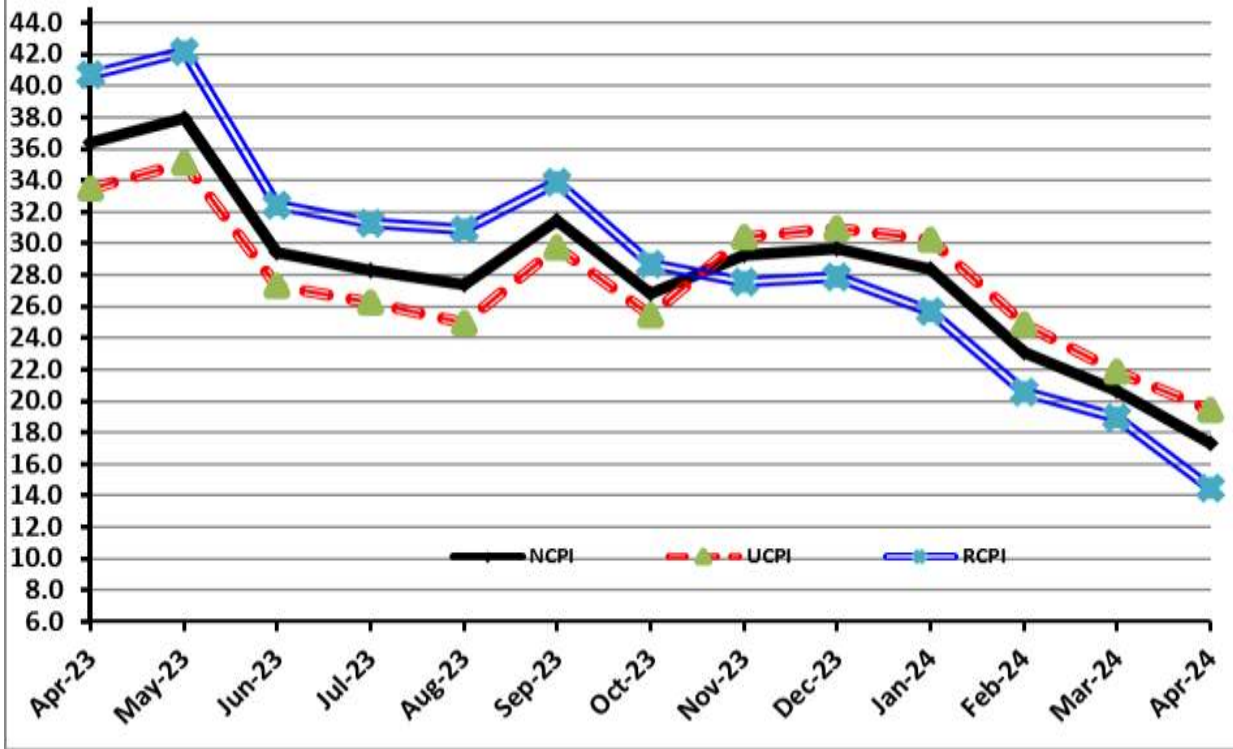
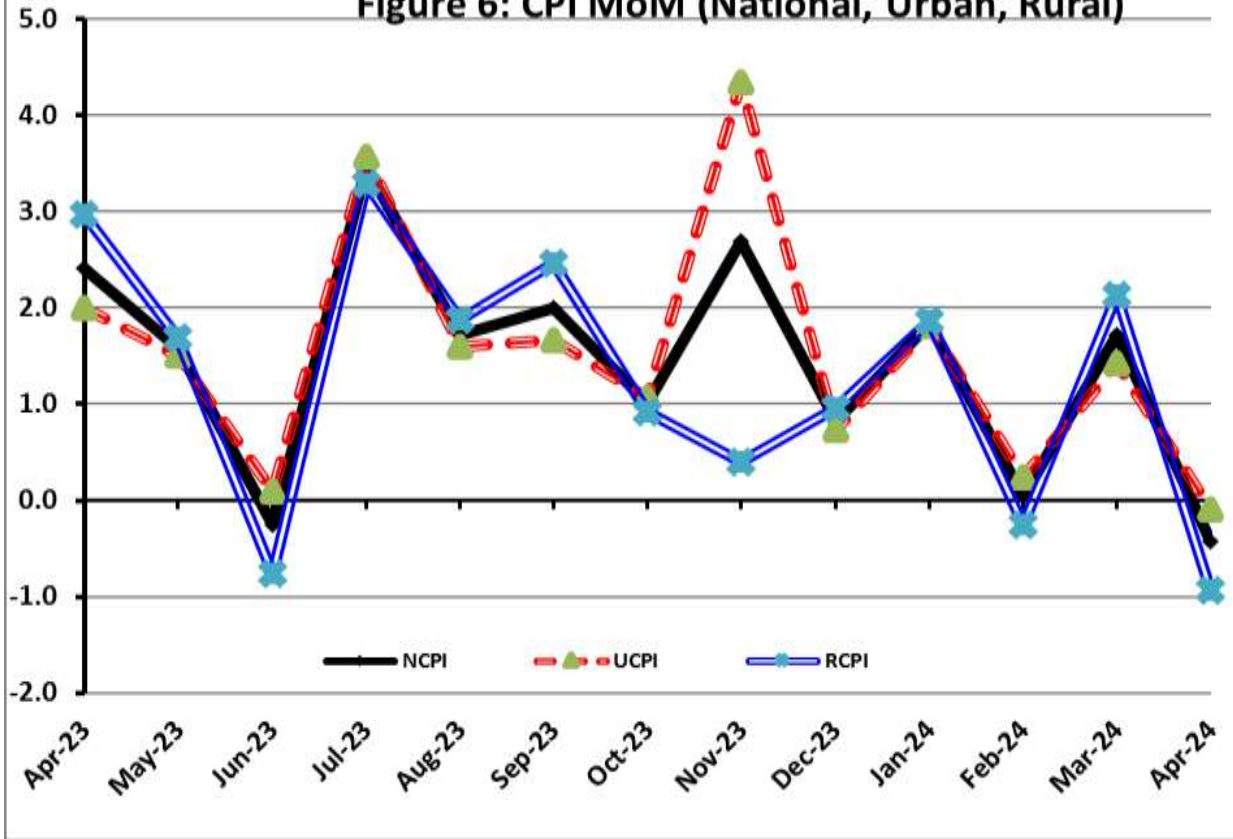


Figure 6: CPI MoM (National, Urban, Rural)



I. National Consumer Price Index (N-CPI)

The **National Consumer Price Index** for **April 2024** is decreased to 0.43% over **March 2024** and increased to 17.34% over corresponding month of the last year i.e. **April 2023**.

Table 1: Consumer Price Index (National) by Group of Commodities and Services (Base 2015-16)

No	Group	Group Weight (%)	Indices			% Change Apr 2024 Over		Impact (In % points) Apr 2024 Over	
			Apr 24	Mar 24	Apr 23	Mar 24	Apr 23	Mar 24	Apr 23
	General	100.00	263.32	264.46	224.41	-0.43	17.34	-0.43	17.34
1.	Food & Non-alcoholic Bev.	34.58	286.43	293.36	261.17	-2.36	9.67	-0.91	3.89
	<i>Non-perishable Food Items</i>	29.60	282.07	286.00	264.23	-1.38	6.75	-0.44	2.35
	<i>Perishable Food Items</i>	4.99	312.36	337.05	243.05	-7.33	28.51	-0.47	1.54
2.	Alcoholic Bev. & Tobacco	1.02	366.07	365.80	354.17	0.07	3.36	0.00	0.05
3.	Clothing & Footwear	8.60	238.38	228.13	200.17	4.49	19.09	0.33	1.46
4.	Housing, Water, Electricity, Gas & Fuels	23.63	239.81	244.24	176.77	-1.81	35.67	-0.40	6.64
5.	Furnishing & Household Equipment Maintenance	4.10	266.41	265.47	226.20	0.36	17.78	0.01	0.73
6.	Health	2.79	237.29	236.68	200.06	0.26	18.61	0.01	0.46
7.	Transport	5.91	320.28	311.46	284.74	2.83	12.48	0.20	0.94
8.	Communication	2.21	134.85	134.83	117.80	0.02	14.47	0.00	0.17
9.	Recreation & Culture	1.59	258.77	256.67	231.40	0.82	11.83	0.01	0.19
10.	Education	3.79	196.20	187.50	170.02	4.64	15.40	0.12	0.44
11.	Restaurants & Hotels	6.92	269.38	266.35	225.48	1.14	19.47	0.08	1.35
12.	Miscellaneous	4.87	282.22	276.81	236.14	1.96	19.51	0.10	1.00

II. Urban Consumer Price Index (UCPI)

The Urban Consumer Price Index for **April 2024** is decreased to 0.09% over **March 2024** and increased to 19.40% over corresponding month of the last year i.e. **April 2023**.

Table 2: Consumer Price Index (Urban) by Group of Commodities and Services (Base 2015-16)

No	Group	Group Weight (%)	Indices			% Change Apr 2024 Over		Impact (In % points) Apr 2024 Over	
			Apr 24	Mar 24	Apr 23	Mar 24	Apr 23	Mar 24	Apr 23
	General	100.00	259.24	259.47	217.11	-0.09	19.40	-0.09	19.40
1.	Food & Non-alcoholic Bev.	30.42	281.53	286.46	254.53	-1.72	10.61	-0.58	3.78
	<i>Non-perishable Food Items</i>	25.97	278.17	279.63	257.32	-0.52	8.10	-0.15	2.49
	<i>Perishable Food Items</i>	4.46	301.13	326.28	238.31	-7.71	26.36	-0.43	1.29
2.	Alcoholic Bev. & Tobacco	0.85	386.36	386.20	375.93	0.04	2.77	0.00	0.04
3.	Clothing & Footwear	8.01	230.79	216.67	196.25	6.52	17.60	0.44	1.27
4.	Housing, Water, Electricity, Gas & Fuels	27.03	246.31	250.13	171.90	-1.53	43.29	-0.40	9.27
5.	Furnishing & Household Equip. & Maintenance	4.09	257.23	256.37	222.82	0.34	15.44	0.01	0.65
6.	Health	2.31	237.26	236.76	200.69	0.21	18.22	0.00	0.39
7.	Transport	6.14	312.92	305.33	285.69	2.49	9.53	0.18	0.77
8.	Communication	2.35	138.77	138.77	122.29	0.00	13.48	0.00	0.18
9.	Recreation & Culture	1.73	247.36	246.16	223.56	0.49	10.65	0.01	0.19
10.	Education	4.88	192.49	188.09	169.92	2.34	13.28	0.08	0.51
11.	Restaurants & Hotels	7.41	268.67	265.74	226.36	1.10	18.69	0.08	1.44
12.	Miscellaneous	4.77	275.96	271.71	234.41	1.56	17.73	0.08	0.91

Main contributors to month-on-month and year-on-year percentage changes are given below and detail is given in **Annexure-A**.

1. MONTH-ON-MONTH Top few commodities which varied from previous month are given below:

FOOD

Increased: Chicken (21.38%), Fish (2.49%), Potatoes (2.29%), Meat (1.94%), Milk Powder (1.34%), Bakery and Confectionary (1.04%), Sweetmeat (1.03%), Readymade Food (0.68%), Pulse Mash (0.38%), Rice (0.30%), Mustard Oil (0.21%), Pan Prepared (0.19%), Milk Products (0.14%), Nimco (0.14%), Milk Fresh (0.10%), Ice Cream (0.02%) and Cigarettes (0.01%).

Decreased: Onions (15.58%), Fresh vegetables (11.98%), Wheat (10.44%), Wheat Flour (9.67%), Tomatoes (6.23%), Eggs (4.30%), Pulse Gram (1.15%), Pulse Masoor (1.00%), Sugar (0.96%), Fresh Fruits (0.95%), Besan (0.85%), Gram Whole (0.49%), Wheat Products (0.44%), Gur (0.36%), Condiments and Spices (0.30%), Dry Fruits (0.28%), Tea (0.21%), Vegetable Ghee (0.14%), Cooking Oil (0.12%), Pulse Moong (0.12%), Honey (0.10%), Beverages (0.02%) and Beans (0.01%).

NON-FOOD:

Increased: Footwears (17.16%), Cotton Cloth (9.74%), Woolen Cloth (3.82%), Motor Fuel (3.63%), Dopatta (3.59%), Marriage Hall Charges (2.58%), Education (2.34%), Personal Grooming Services (2.10%), Transport Services (1.50%), House Rent (1.45%), Recreation and Culture (1.26%).

Decreased: Electricity Charges (9.50%), Liquefied Hydrocarbons (0.60%) and Construction Input Items (0.12%).

YEAR-ON-YEAR: Top few commodities which varied from corresponding month of previous year i.e. April, 2023 are given below:

FOOD

Increased: Onions (156.16%), Tomatoes (126.67%), Condiments and Spices (46.3%), Gur (35.99%), Chicken (33.62%), Beans (29.64%), Fish (28.41%), Pulse Mash (25.32%), Fresh Vegetables (25.08%), Beverages (24.60%), Dry Fruits (24.01%), Meat (22.18%), Milk Powder (21.26%), Sweetmeat (21.09%), Pulse Masoor (19.67%), Readymade Food (17.26%), Pan Prepared (16.14%), Sugar (15.06%), Nimco (14.43%), Milk Products (13.28%), Bakery and Confectionary (13.09%), Wheat Products (11.49%), Rice (10.78%), Butter (10.31%), Milk Fresh (10.26%), Potatoes (9.67%) and Pulse Moong (9.62%).

Decreased: Cooking Oil (20.86%), Vegetable Ghee (17.75%), Mustard Oil (15.41%), Fresh Fruits (13.85%), Wheat (10.95%), Wheat Flour (4.72%), Eggs (3.55%) and Gram Whole (0.39%).

NON-FOOD:

Increased: Gas Charges (318.74%), Electricity Charges (71.12%), Accommodation Services (31.50%), Transport Services (26.70%), Cotton Cloth (23.00%), Drugs & Medicines (22.78%) and Footwears (21.38%).

III. Rural Consumer Price Index (RCPI)

The Rural Consumer Price Index for April 2024 is decreased to 0.93% over March 2024 and increased to 14.46% over corresponding month of the last year i.e. April 2023.

Table 3: Consumer Price Index (Rural) by Group of Commodities and Services (Base 2015-16)

No	Group	Group Weight (%)	Indices			% Change Apr 2024 Over		Impact (In % points) Apr 2024 Over	
			Apr 24	Mar 24	Apr 23	Mar 24	Apr 23	Mar 24	Apr 23
	General	100.00	269.48	272.00	235.43	-0.93	14.46	-0.93	14.46
1.	Food & Non-alcoholic Bev.	40.87	291.94	301.11	268.63	-3.05	8.68	-1.38	4.05
	<i>Non-perishable Food Items</i>	<i>35.08</i>	<i>286.42</i>	<i>293.12</i>	<i>271.94</i>	<i>-2.29</i>	<i>5.32</i>	<i>-0.86</i>	<i>2.16</i>
	<i>Perishable Food Items</i>	<i>5.79</i>	<i>325.40</i>	<i>349.57</i>	<i>248.56</i>	<i>-6.91</i>	<i>30.91</i>	<i>-0.51</i>	<i>1.89</i>
2.	Alcoholic Bev. & Tobacco	1.28	345.61	345.24	332.23	0.11	4.03	0.00	0.07
3.	Clothing & Footwear	9.48	248.05	242.74	205.17	2.19	20.90	0.19	1.73
4.	Housing, Water, Electricity, Gas & Fuels	18.49	225.47	231.25	187.51	-2.50	20.24	-0.39	2.98
5.	Furnishing & Household Equip. & Maintenance	4.10	280.24	279.16	231.29	0.39	21.16	0.02	0.85
6.	Health	3.51	237.32	236.60	199.43	0.30	19.00	0.01	0.57
7.	Transport	5.56	332.55	321.67	283.17	3.38	17.44	0.22	1.17
8.	Communication	1.99	127.88	127.82	109.82	0.05	16.45	0.00	0.15
9.	Recreation & Culture	1.38	280.42	276.61	246.28	1.38	13.86	0.02	0.20
10.	Education	2.13	209.01	185.46	170.38	12.70	22.67	0.18	0.35
11.	Restaurants & Hotels	6.19	270.66	267.45	223.90	1.20	20.88	0.07	1.23
12.	Miscellaneous	5.02	291.21	284.12	238.63	2.50	22.03	0.13	1.12

Main contributors to Month-on-Month and Year-on-Year percentage changes are given below and detail is given in **Annexure-B**.

1. MONTH-ON-MONTH Top few commodities which varied from previous month are given below:

FOOD

Increased: Chicken (20.35%), Fresh Fruits (8.31%), Potatoes (6.93%), Beans (3.60%), Meat (2.76%), Tomatoes (2.07%), Fish (1.78%), Readymade Food (1.62%), Butter (1.58%), Sweetmeat (0.99%), Condiments and Spices (0.72%), Nimco (0.58%), Milk Products (0.57%), Bakery and Confectionary (0.51%), Milk Fresh (0.42%), Milk Powder (0.34%), Mustard Oil (0.28%), Honey (0.12%) and Pulse Moong (0.06%).

Decreased: Onions (18.97%), Wheat (13.84%), Fresh Vegetables (13.70%), Wheat Flour (13.30%), Eggs (2.85%), Pulse Masoor (1.78%), Sugar (1.24%), Besan (1.18%), Wheat Products (0.98%), Pulse Gram (0.86%), Gram Whole (0.63%), Dry Fruits (0.62%), Tea (0.61%), Gur (0.52%), Pulse Mash (0.43%), Cooking Oil (0.27%), Rice (0.14%), Vegetable Ghee (0.12%) and Beverages (0.03%).

NON-FOOD

Increased: Education (12.70%), Transport Services (4.10%), Cotton Cloth (3.94%), Motor Fuels (3.86%), Stationery (3.20%), Woolen Cloth (2.46%), Personal Grooming Services (2.31%), Footware (2.12%), House Rent (1.79%) and Text Books (1.12%).

Decreased: Electricity Charges (9.50%), Liquified Hydrocarbons (2.21%), Solid Fuel (1.20%) and Construction Input Items (0.82%).

YEAR-ON-YEAR: Top few commodities which varied from corresponding month of previous year i.e. April, 2023 are given below:

FOOD

Increased: Tomatoes (186.56%), Onions (138.06%), Beans (40.02%), Gur (32.31%), Chicken (30.87%), Fresh Vegetables (27.87%), Fish (25.82%), Butter (24.48%), Beverages (22.61%), Pulse Mash (22.49%), Meat (22.36%), Milk Products (22.16%), Readymade Food (21.15%), Milk Powder (20.93%), Bakery and Confectionary (20.76%), Dry Fruits (19.01%), Sweetmeat (18.58%), Rice (16.08%), Sugar (15.65%), Pulse Masoor (15.40%), Potatoes (14.40%) and Milk Fresh (13.78%).

Decreased: Cooking Oil (20.87%), Vegetable Ghee (18.95%), Fresh Fruits (14.91%), Mustard Oil (10.66%), Wheat (8.83%), Wheat Flour (8.83%), Eggs (0.20%) and Besan (0.05%).

NON-FOOD

Increased: Electricity Charges (71.12%), Transport Services (51.99%), Newspapers (46.34%), Woolen Readymade Garments (38.42%), Water Supply (31.65%), Appliances/Articles/Products for Personal Care (29.56%), Drugs and Medicines (24.84%) and Furniture & Furnishing (24.68%).

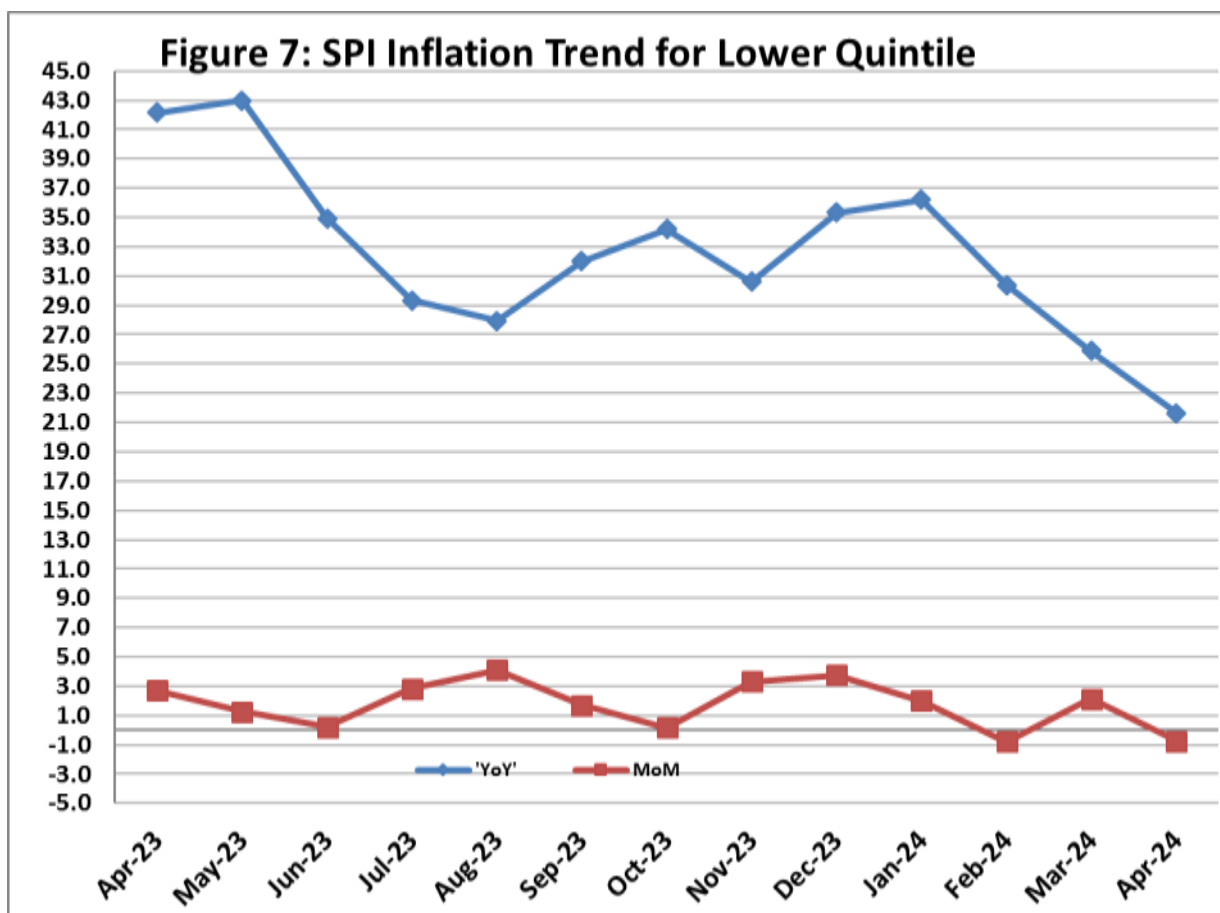
IV. Sensitive Price Indicator

Quintile-wise percentage changes YoY and MoM are given below in Table 4. The series from Apr 2023 to Apr 2024 is also graphed below in Figure 7.

Table 4: Sensitive Price Indicator (Base 2015-16)					
Quintiles	Indices			% Change Mar 2024 Over	
	Apr 2024	Mar 2024	Apr 2023	Mar 2024	Apr 2023
1	313.65	316.02	257.86	-0.75	21.64
2	312.53	314.50	248.77	-0.63	25.63
3	334.75	336.05	252.39	-0.39	32.63
4	323.04	323.50	248.29	-0.14	30.11
5	323.79	322.80	256.51	0.31	26.23
Combined	323.96	324.06	251.58	-0.03	28.77

Table 4.1: Weekly Percentage Change of SPI During April 2024				
Quintiles	% Change with Previous week			
	04-04-2024	11-04-2024*	18-04-2024	25-04-2024
Quintile 1	0.83	-	-0.71	-1.3
Combined	0.96	-	-0.79	-1.1

* Due to Eid-ul-Fitar holidays on 11th April, 2024, the SPI was not compiled.



V. Wholesale Price Index

The Wholesale Price Index for **April, 2024** decreased by 0.70% over **March, 2024**. It increased to 13.88% over the corresponding month of the last year i.e. **April, 2023**. YoY and MoM movements, from April, 2023 to April, 2024 are also graphed below in Figure 8.

Table 5: Wholesale Price Index by Group of Commodities (Base 2015-16)

No	Group	Group Weight (%)	Indices			% Change Apr 2024 Over		Impact (In % points) Apr 2024 Over	
			Apr 24	Mar 24	Apr 23	Mar 24	Apr 23	Mar 24	Apr 23
	General	100.00	315.74	317.95	277.26	-0.70	13.88	-0.70	13.88
1	Agriculture Forestry & Fishery	25.77	296.00	299.87	266.46	-1.29	11.09	-0.31	2.74
2	Ores/Minerals, Elec., Gas & Water	12.01	373.31	387.71	229.06	-3.71	62.97	-0.54	6.25
3	Food, Beverages, Tobacco, Textiles & Leather Products	31.11	264.39	263.95	248.47	0.17	6.41	0.04	1.79
	i. Food Products, Beverages & Tobacco	20.07	277.42	279.03	261.91	-0.58	5.92	-0.10	1.12
	ii. Textiles & Apparels	10.33	244.42	240.03	227.85	1.83	7.27	0.14	0.62
	iii. Leather Products	0.71	186.88	185.68	168.62	0.65	10.83	0.00	0.05
4	Other Transportable Goods	22.40	353.82	351.98	328.10	0.52	7.84	0.13	2.08
5	Metal Product, Machinery & Equipment	8.72	380.21	380.58	347.73	-0.10	9.34	-0.01	1.02

Main contributors to month-on-month and year-on-year percentage changes are given below and detail is given in **Annexure-C**.

1. **MONTH-ON-MONTH:** Top few commodities which varied from previous month are given below:

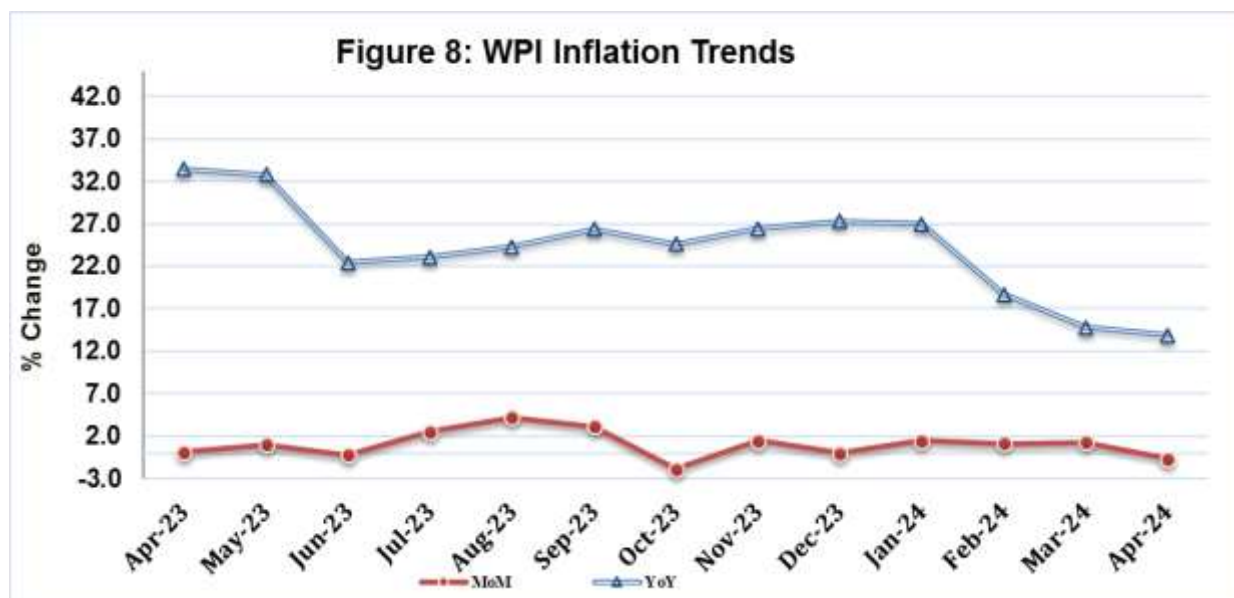
Increased: Poultry (23.35%), Stimulant & Spice Crops (11.35%), Other Fabrics (10.04%), Hides, Skins & Fur Skins, Raw (10.03%), Raw Animal Materials / Wool (6.06%), Unmanufactured Tobacco (5.44%), Woven Fabrics (4.78%), Meat of Animals (4.59%), Motor Spirit (4.38%), Edible Roots / Potatoes (4.20%), Silk & Reyon Fabrics (4.13%), Salt & Pure Sodium Chloride (3.96%) and Sugar Crops (3.62%).

Decreased: Vegetables (14.87%), Wheat (12.99%), Wheat Flour (9.55%), Electrical Energy (8.24%), Eggs (6.30%), Spices (5.93%), Sorghum / Jowar (5.25%), Printing Paper (4.60%), Fresh Fruits (4.47%), Dry Fruits (1.62%), Other Cereal Flour (1.36%), Maize (1.32%), Other Oil Seeds (1.26%), Fibre Crops (1.06%), Dried Fruits & Nuts (0.74%) and Steel Bar & Sheets (0.61%).

YEAR-ON-YEAR: Top few commodities which varied from previous year are given below:

Increased: Unmanufactured Tobacco (97.00%), Vegetables (83.50%), Natural Gas Liquefied (71.80%), Spices (61.65%), Concrete Mixture (61.59%), Electrical Energy (59.64%), Engines & Motors (58.83%), Sugar Crops (51.89%), Other Food Products (48.33%), Insecticides (35.48%), Fertilizers (34.66%), Quilts (33.93%), Woven Fabrics (32.90%), Poultry (31.93%), Meat of Animals (29.16%), Cultivators (28.15%), Glass Sheets (28.02%) and Electric Wires (27.95%).

Decreased: Printing Paper (20.35%), Vegetable Ghee (19.14%), Other Oil Seeds (19.04%), Fresh Fruits (18.23%), Maize (15.40%), Chemicals (15.12%), Cotton Seeds (9.61%), Wheat (8.01%), Vegetable Oils Refined (7.38%), Wheat Flour (6.65%) and Eggs(5.73%).



Annexure A: CPI (Urban) Index Numbers by Commodity Groups & Commodities (2015-16=100)

Item and Specification	Weight	Index Numbers			% Change in Apr 2024 over			
		Apr 24	Mar 24	Apr 23	Mar 2024	Apr 2023		
General	100.0000	259.24	259.47	217.11	-	0.09	+	19.40
Food and non-alcoholic Beverage	30.4215	281.53	286.46	254.53	-	1.72	+	10.61
01 Wheat	0.6120	319.60	356.85	358.90	-	10.44	-	10.95
02 Wheat flour	3.0075	317.77	351.77	333.51	-	9.67	-	4.72
03 Wheat products	0.0936	324.39	325.81	290.97	-	0.44	+	11.49
04 Besan	0.0830	215.75	217.59	214.25	-	0.85	+	0.70
05 Rice	1.1804	329.95	328.95	297.83	+	0.30	+	10.78
06 Bakery and confectionary	0.4770	269.28	266.52	238.11	+	1.04	+	13.09
07 Nimco	0.1224	285.51	285.10	249.51	+	0.14	+	14.43
08 Meat	2.0411	293.80	288.20	240.46	+	1.94	+	22.18
09 Chicken	1.3631	358.08	295.01	267.99	+	21.38	+	33.62
10 Fish	0.3855	193.59	188.89	150.76	+	2.49	+	28.41
11 Milk fresh	7.1070	236.75	236.51	214.72	+	0.10	+	10.26
12 Milk products	0.6407	245.12	244.77	216.39	+	0.14	+	13.28
13 Milk powder	0.3106	255.00	251.64	210.29	+	1.34	+	21.26
14 Eggs	0.5083	298.32	311.74	309.29	-	4.30	-	3.55
15 Butter	0.0932	352.02	352.02	319.13	+	0.00	+	10.31
16 Mustard oil	0.0120	286.71	286.10	338.93	+	0.21	-	15.41
17 Cooking oil	1.1016	297.74	298.11	376.23	-	0.12	-	20.86
18 Vegetable ghee	1.0324	301.62	302.05	366.70	-	0.14	-	17.75
19 Dry fruits	0.3299	281.11	281.90	226.68	-	0.28	+	24.01
20 Fresh fruits	1.4363	247.35	249.72	287.10	-	0.95	-	13.85
21 Pulse masoor	0.1624	228.37	230.68	190.84	-	1.00	+	19.67
22 Pulse moong	0.1697	188.73	188.95	172.17	-	0.12	+	9.62
23 Pulse mash	0.1152	232.62	231.75	185.62	+	0.38	+	25.32
24 Pulse gram	0.1660	212.24	214.70	206.32	-	1.15	+	2.87
25 Gram whole	0.0912	262.91	264.20	263.94	-	0.49	-	0.39
26 Beans	0.0408	350.12	350.16	270.07	-	0.01	+	29.64
27 Potatoes	0.4496	291.65	285.11	265.93	+	2.29	+	9.67
28 Onions	0.5928	501.20	593.72	195.66	-	15.58	+	<u>156.16</u>
29 Tomatoes	0.3459	329.19	351.06	145.23	-	6.23	+	<u>126.67</u>
30 Fresh vegetables	1.5306	261.47	297.07	209.05	-	11.98	+	25.08
31 Sugar	1.1130	229.56	231.78	199.52	-	0.96	+	15.06
32 Gur	0.0379	233.27	234.11	171.54	-	0.36	+	35.99
33 Honey	0.1017	182.34	182.53	171.79	-	0.10	+	6.14
34 Sweetmeat	0.3535	296.77	293.74	245.08	+	1.03	+	21.09
35 Ice cream	0.1044	198.51	198.48	184.12	+	0.02	+	7.82
36 Condiments and Spices	1.3340	319.47	320.44	218.36	-	0.30	+	46.30
37 Dessert preparation	0.0419	264.44	264.44	254.62	+	0.00	+	3.86
38 Tea	0.8427	332.73	333.43	331.42	-	0.21	+	0.40
39 Beverages	0.8906	244.51	244.57	196.24	-	0.02	+	24.60
Alcoholic Beverages, Tobacco	0.8540	386.36	386.20	375.93	+	0.04	+	2.77
40 Cigarettes	0.7167	384.67	384.62	382.76	+	0.01	+	0.50
41 Pan prepared	0.1373	395.17	394.44	340.26	+	0.19	+	16.14
Clothing and footwear	8.0096	230.79	216.67	196.25	+	6.52	+	17.60
42 Cotton cloth	2.2227	273.04	248.80	221.99	+	9.74	+	23.00
43 Woolen cloth	0.8361	223.94	215.69	191.50	+	3.82	+	16.94
44 Readymade garments	1.3196	200.11	198.36	176.32	+	0.88	+	13.49
45 Woolen readymade garments	0.4307	230.68	230.68	186.87	+	0.00	+	23.44
46 Tailoring	1.0741	216.57	215.73	201.76	+	0.39	+	7.34
47 Hosiery	0.4070	207.84	206.99	189.95	+	0.41	+	9.42
48 Dopatta	0.1713	184.94	178.53	164.14	+	3.59	+	12.67
49 Cleaning and laundering	0.0665	253.08	252.50	227.36	+	0.23	+	11.31
50 Footwear	1.4816	219.54	187.39	180.87	+	17.16	+	21.38
Housing, water, Elec., Gas and Water	27.0332	246.31	250.13	171.90	-	1.53	+	43.29
51 House rent	19.2558	162.50	160.17	153.59	+	1.45	+	5.80
52 Construction input items	0.3765	258.92	259.24	236.18	-	0.12	+	9.63
53 Construction wage rates	0.2025	213.75	213.53	200.38	+	0.10	+	6.67
54 Water supply	0.5269	199.06	199.06	172.80	+	0.00	+	15.20
55 Garbage collection	0.1064	247.08	246.85	209.09	+	0.09	+	18.17
56 Electricity charges	4.5562	307.40	339.66	179.64	-	9.50	+	<u>71.12</u>
57 Gas charges	1.0807	1479.08	1479.08	353.22	+	0.00	+	<u>318.74</u>

Annexure A:CPI (Urban) Index Numbers by Commodity Groups & Commodities (2015-16=100)

Item and Specification	Weight	Index Numbers			% Change in Apr 2024 over	
		Apr 24	Mar 24	Apr 23	Mar 2024	Apr 2023
58 Liquefied Hydrocarbons	0.5064	341.19	343.26	337.57	- 0.60	+ 1.07
59 Solid Fuel	0.4218	203.67	203.06	179.01	+ 0.30	+ 13.78
<i>Furnishing and household equipment</i>	4.0937	257.23	256.37	222.82	+ 0.34	+ 15.44
60 Furniture and furnishing	0.4750	243.67	243.45	201.34	+ 0.09	+ 21.02
61 Carpets	0.0308	148.08	148.03	142.18	+ 0.03	+ 4.15
62 Household textiles	0.3420	183.22	182.73	167.72	+ 0.27	+ 9.24
63 Household equipments	1.0032	253.43	251.94	228.57	+ 0.59	+ 10.88
64 Plastic products	0.0536	206.18	205.44	177.73	+ 0.36	+ 16.01
65 Major tools & equipments	0.0084	224.12	222.76	206.53	+ 0.61	+ 8.52
66 Washing soap/detergents/match	1.4112	323.65	322.47	268.66	+ 0.37	+ 20.47
67 Household servant	0.7695	189.91	189.91	175.54	+ 0.00	+ 8.19
<i>Health</i>	2.3098	237.26	236.76	200.69	+ 0.21	+ 18.22
68 Drugs and medicines	1.0735	254.89	253.95	207.60	+ 0.37	+ 22.78
69 Therapeutic Appliances and Equipment	0.0054	147.59	147.55	132.06	+ 0.03	+ 11.76
70 Doctor (MBBS) clinic fee	0.4044	293.79	293.79	254.96	+ 0.00	+ 15.23
71 Dental services	0.0156	178.09	177.03	153.74	+ 0.60	+ 15.84
72 Medical tests	0.2367	185.45	184.89	170.59	+ 0.30	+ 8.71
73 Hospitals services	0.5742	188.31	188.30	163.91	+ 0.01	+ 14.89
<i>Transport</i>	6.1368	312.92	305.33	285.69	+ 2.49	+ 9.53
74 Motor vehicles	0.8097	256.04	255.69	253.28	+ 0.14	+ 1.09
75 Motor vehicle accessories	0.1941	252.70	252.48	231.65	+ 0.09	+ 9.09
76 Motor fuel	2.9088	389.71	376.07	369.15	+ 3.63	+ 5.57
77 Mechanical services	0.4290	220.50	219.88	195.66	+ 0.28	+ 12.70
78 Motor vehicle tax	0.0482	148.53	148.53	148.53	+ 0.00	+ 0.00
79 Transport services	1.7470	245.35	241.73	193.65	+ 1.50	+ 26.70
<i>Communication</i>	2.3536	138.77	138.77	122.29	+ 0.00	+ 13.48
80 Postal services	0.0190	207.37	207.37	190.07	+ 0.00	+ 9.10
81 Communication apparatus	0.4524	190.89	190.87	176.67	+ 0.01	+ 8.05
82 Communication Services	1.8822	125.55	125.55	108.53	+ 0.00	+ 15.68
<i>Recreation and culture</i>	1.7301	247.36	246.16	223.56	+ 0.49	+ 10.65
83 Recreation and culture	0.6478	150.72	148.85	144.24	+ 1.26	+ 4.49
84 Text books	0.6655	315.78	314.48	280.61	+ 0.41	+ 12.53
85 Newspapers	0.0716	211.87	211.87	157.93	+ 0.00	+ 34.15
86 stationery	0.3452	304.17	304.15	276.05	+ 0.01	+ 10.19
<i>Education</i>	4.8807	192.49	188.09	169.92	+ 2.34	+ 13.28
87 Education	4.8807	192.49	188.09	169.92	+ 2.34	+ 13.28
<i>Restaurants and hotels</i>	7.4050	268.67	265.74	226.36	+ 1.10	+ 18.69
88 Readymade food	5.5235	275.14	273.29	234.65	+ 0.68	+ 17.26
89 Marriage Hall Charges	1.7514	255.77	249.33	207.58	+ 2.58	+ 23.22
90 Accommodation Services	0.1301	167.44	166.21	127.33	+ 0.74	+ 31.50
<i>Misc. goods and services</i>	4.7720	275.96	271.71	234.41	+ 1.56	+ 17.73
91 Personal Grooming Services	0.8001	244.49	239.46	201.45	+ 2.10	+ 21.37
92 Electrical Appliances for Per	0.0465	161.75	161.72	150.64	+ 0.02	+ 7.38
93 Appliances/Articles/Products	2.9807	258.07	257.89	215.60	+ 0.07	+ 19.70
94 Personal Effects n.e.c.	0.9447	364.69	348.03	325.77	+ 4.79	+ 11.95

Annexure B:CPI (Rural) Index Numbers by Commodity Groups & Commodities (2015-16=100)

Item and Specification	Weight	Index Numbers			% Change in Apr 2024 over			
		Apr 24	Mar 24	Apr 23	Mar 2024	Apr 2023		
General	100.0000	269.48	272.00	235.43	-	0.93	+	14.46
Food and non-alcoholic Beverage	40.8668	291.94	301.11	268.63	-	3.05	+	8.68
01 Wheat	3.4736	316.63	367.50	347.28	-	13.84	-	8.83
02 Wheat Flour	3.4297	316.14	364.64	346.75	-	13.30	-	8.83
03 Wheat Products	0.1068	330.70	333.97	298.61	-	0.98	+	10.75
04 Besan	0.0728	229.93	232.68	230.05	-	1.18	-	0.05
05 Rice	1.5501	436.01	436.61	375.62	-	0.14	+	16.08
06 Bakery and Confectionary	0.3702	309.46	307.88	256.25	+	0.51	+	20.76
07 Nimco	0.0774	298.25	296.53	246.46	+	0.58	+	21.01
08 Meat	1.7146	298.79	290.77	244.19	+	2.76	+	22.36
09 Chicken	1.4641	376.36	312.71	287.59	+	20.35	+	30.87
10 Fish	0.2640	210.63	206.94	167.41	+	1.78	+	25.82
11 Milk fresh	10.3803	238.02	237.02	209.20	+	0.42	+	13.78
12 Milk products	0.9624	242.48	241.11	198.50	+	0.57	+	22.16
13 Milk powder	0.1062	219.25	218.50	181.31	+	0.34	+	20.93
14 Eggs	0.5665	292.22	300.78	292.80	-	2.85	-	0.20
15 Butter	0.3333	267.70	263.54	215.06	+	1.58	+	24.48
16 Mustard oil	0.0136	305.04	304.20	341.44	+	0.28	-	10.66
17 Cooking oil	0.6011	322.34	323.20	407.33	-	0.27	-	20.87
18 Vegetable ghee	2.3764	328.22	328.60	404.95	-	0.12	-	18.95
19 Dry fruits	0.2496	320.47	322.46	269.27	-	0.62	+	19.01
20 Fresh fruits	1.4505	288.13	266.03	338.61	+	8.31	-	14.91
21 Pulse Masoor	0.2076	239.95	244.31	207.93	-	1.78	+	15.40
22 Pulse Moong	0.2510	205.30	205.17	185.57	+	0.06	+	10.63
23 Pulse Mash	0.1465	236.64	237.67	193.19	-	0.43	+	22.49
24 Pulse Gram	0.2751	215.57	217.45	210.23	-	0.86	+	2.54
25 Gram Whole	0.1116	274.87	276.61	269.56	-	0.63	+	1.97
26 Beans	0.0896	395.65	381.90	282.57	+	3.60	+	40.02
27 Potatoes	0.7437	317.85	297.25	277.85	+	6.93	+	14.40
28 Onions	0.8965	466.19	575.32	195.83	-	18.97	+	<u>138.06</u>
29 Tomatoes	0.5069	356.42	349.18	124.38	+	2.07	+	<u>186.56</u>
30 Fresh Vegetables	2.0947	281.85	326.58	220.42	-	13.70	+	27.87
31 Sugar	2.0296	230.10	233.00	198.96	-	1.24	+	15.65
32 Gur	0.1522	236.66	237.89	178.87	-	0.52	+	32.31
33 Honey	0.0296	189.05	188.83	172.54	+	0.12	+	9.57
34 Sweetmeat	0.3967	279.01	276.27	235.29	+	0.99	+	18.58
35 Ice Cream	0.0568	197.95	197.95	168.57	+	0.00	+	17.43
36 Condiments and Spices	1.4919	288.85	286.78	258.59	+	0.72	+	11.70
37 Dessert Preparation	0.0133	268.52	268.52	246.78	+	0.00	+	8.81
38 Tea	1.2566	335.70	337.75	311.65	-	0.61	+	7.72
39 Beverages	0.5537	235.07	235.14	191.72	-	0.03	+	22.61
Alcoholic Beverages, Tobacco	1.2786	345.61	345.24	332.23	+	0.11	+	4.03
40 Cigarettes	1.2364	346.40	346.06	334.11	+	0.10	+	3.68
41 Pan Prepared	0.0422	322.25	320.98	277.03	+	0.40	+	16.32
Clothing and footwear	9.4826	248.05	242.74	205.17	+	2.19	+	20.90
42 Cotton Cloth	2.8381	271.95	261.63	224.57	+	3.94	+	21.10
43 Woolen Cloth	1.0959	245.16	239.27	197.91	+	2.46	+	23.87
44 Readymade Garments	1.1345	223.49	221.82	195.59	+	0.75	+	14.26
45 Woolen Readymade Garments	0.5401	268.35	268.35	193.86	+	0.00	+	38.42
46 Tailoring	1.2999	232.01	230.00	201.41	+	0.87	+	15.19
47 Hosiery	0.4322	321.92	320.84	271.24	+	0.34	+	18.68
48 Dopatta	0.2078	233.00	228.45	184.91	+	1.99	+	26.01
49 Cleaning and Laundering	0.0176	249.38	248.77	213.67	+	0.25	+	16.71
50 Footwear	1.9165	218.95	214.41	179.21	+	2.12	+	22.18
Housing, water, Elec., Gas & Fuels	18.4853	225.47	231.25	187.51	-	2.50	+	20.24
51 House Rent	8.6110	169.03	166.06	156.90	+	1.79	+	7.73
52 Construction Input Items	0.6306	228.44	230.32	204.66	-	0.82	+	11.62
53 Construction Wage Rates	0.2526	226.44	224.84	204.48	+	0.71	+	10.74
54 Water Supply	0.0645	292.34	292.34	222.06	+	0.00	+	31.65
55 Garbage Collection	0.0080	189.52	189.52	169.61	+	0.00	+	11.74
56 Electricity Charges	3.4431	307.40	339.66	179.64	-	9.50	+	<u>71.12</u>
57 Liquefied Hydrocarbons	0.9994	317.13	324.29	301.29	-	2.21	+	5.26
58 Solid Fuel	4.4761	249.18	252.20	223.22	-	1.20	+	11.63

Annexure B:CPI (Rural) Index Numbers by Commodity Groups & Commodities (2015-16=100)

Item and Specification	Weight	Index Numbers			% Change in Apr 2024 over			
		Apr 24	Mar 24	Apr 23	Mar 2024	Apr 2023		
<i>Furnishing and household equipments</i>	4.1031	280.24	279.16	231.29	+	0.39	+	21.16
59 Furniture and Furnishing	0.5786	259.89	257.30	208.45	+	1.01	+	24.68
60 Household Textiles	0.4382	220.57	220.57	188.70	+	0.00	+	16.89
61 Household Equipments	1.2774	272.34	270.82	232.81	+	0.56	+	16.98
62 Plastic Products	0.0776	264.89	262.20	219.26	+	1.03	+	20.81
63 Major Tools and Equipments	0.0324	219.84	219.48	200.69	+	0.16	+	9.54
64 Washing Soaps, Detergents and	1.6989	310.36	309.90	250.05	+	0.15	+	24.12
<i>Health</i>	3.5141	237.32	236.60	199.43	+	0.30	+	19.00
65 Drugs and Medicines	1.5792	271.90	271.02	217.80	+	0.32	+	24.84
66 Doctor Clinic Fee	0.5128	281.01	281.01	246.29	+	0.00	+	14.10
67 Dental Services	0.0181	188.38	188.38	180.00	+	0.00	+	4.66
68 Medical Tests	0.3967	213.61	211.47	186.92	+	1.01	+	14.28
69 Hospitals Services	1.0073	171.10	170.77	152.06	+	0.19	+	12.52
<i>Transport</i>	5.5580	332.55	321.67	283.17	+	3.38	+	17.44
70 Motor Vehicles	0.7305	192.87	192.76	186.22	+	0.06	+	3.57
71 Motor Vehicles Accessories	0.1572	259.89	258.60	235.24	+	0.50	+	10.48
72 Motor Fuels	2.4932	394.69	380.01	373.22	+	3.86	+	5.75
73 Mechanical Services	0.3645	221.45	221.45	201.71	+	0.00	+	9.79
74 Motor Vehicle Tax	0.0174	150.93	150.93	150.93	+	0.00	+	0.00
75 Transport Services	1.7952	333.75	320.62	219.59	+	4.10	+	51.99
<i>Communication</i>	1.9940	127.88	127.82	109.82	+	0.05	+	16.45
76 Postal Services	0.0070	179.32	179.32	149.43	+	0.00	+	20.00
77 Communication Apparatus	0.3362	156.84	156.53	144.56	+	0.20	+	8.49
78 Communication Services	1.6508	121.76	121.76	102.58	+	0.00	+	18.70
<i>Recreation and culture</i>	1.3764	280.42	276.61	246.28	+	1.38	+	13.86
79 Recreation and Culture	0.4763	218.09	218.09	203.86	+	0.00	+	6.98
80 Text Books	0.5047	331.38	327.72	293.83	+	1.12	+	12.78
81 Newspapers	0.0230	242.52	242.52	165.72	+	0.00	+	46.34
82 Stationery	0.3724	293.41	284.31	241.09	+	3.20	+	21.70
<i>Education</i>	2.1342	209.01	185.46	170.38	+	12.70	+	22.67
83 Education	2.1342	209.01	185.46	170.38	+	12.70	+	22.67
<i>Restaurants and hotels</i>	6.1895	270.66	267.45	223.90	+	1.20	+	20.88
84 Readymade Food	3.8001	299.04	294.27	246.83	+	1.62	+	21.15
85 Marriage Hall Charges	2.2525	232.34	231.55	192.21	+	0.34	+	20.88
86 Accommodation Services	0.1369	113.40	113.40	108.81	+	0.00	+	4.22
<i>Misc. goods and services</i>	5.0174	291.21	284.12	238.63	+	2.50	+	22.03
87 Personal Grooming Services	1.5363	292.25	285.65	241.80	+	2.31	+	20.86
88 Appliances/Articles/Products	2.2746	243.35	242.67	187.83	+	0.28	+	29.56
89 Personal Effects n.e.c.	1.2065	380.13	360.29	330.36	+	5.51	+	15.07

Annexure C: Wholesale Price Indices by Major Groups & Commodities (2015-16=100)

Item and Specification	Weight	Index Numbers			% Change in Apr 2024 over			
		Apr 24	Mar 24	Apr 23	Mar 2024	Apr 2023		
General	100.0000	315.74	317.95	277.26	-	0.70	+	13.88
Agriculture Forestry & Fishery	25.7674	296.00	299.87	266.46	-	1.29	+	11.09
001 Wheat	0.6297	311.74	358.29	338.87	-	12.99	-	8.01
002 Maize	0.6764	242.29	245.54	286.38	-	1.32	-	15.40
003 Rice	2.4413	359.93	359.58	315.19	+	0.10	+	14.19
004 Sorghum / Jowar	0.0214	282.98	298.65	298.04	-	5.25	-	5.05
005 Millet / Bajra	0.0374	255.42	250.79	266.80	+	1.85	-	4.27
006 Vegetables	1.2441	382.35	449.12	208.37	-	14.87	+	<u>83.50</u>
007 Fresh Fruits	1.5144	282.74	295.96	345.77	-	4.47	-	18.23
008 Dry Fruits	0.2478	316.77	321.99	294.02	-	1.62	+	7.74
009 Cotton Seeds	1.1511	177.35	175.59	196.21	+	1.00	-	9.61
010 Other Oil Seeds	0.0722	275.98	279.49	340.88	-	1.26	-	19.04
011 Edible Roots / Potatoes	0.2540	374.20	359.11	337.27	+	4.20	+	10.95
012 Stimulant & Spice Crops	0.1634	466.22	418.71	471.58	+	11.35	-	1.14
013 Pulses	0.4901	270.21	271.48	254.86	-	0.47	+	6.02
014 Sugar Crops	1.0725	317.13	306.05	208.79	+	3.62	+	<u>51.89</u>
015 Fibre Crops	5.3169	400.83	405.11	361.66	-	1.06	+	10.83
016 Unmanufactured Tobacco	0.0742	576.18	546.43	292.48	+	5.44	+	<u>97.00</u>
017 Poultry	0.5633	352.78	286.01	267.40	+	23.35	+	31.93
018 Raw Milk from Bovine Animals	7.0279	226.55	226.55	204.56	+	0.00	+	10.75
019 Eggs	0.5034	292.43	312.10	310.19	-	6.30	-	5.73
020 Raw Animal Materials / Wool	0.0351	144.31	136.07	138.18	+	6.06	+	4.44
021 Hides, Skins & Fur Skins, Raw	0.4834	54.29	49.34	51.63	+	10.03	+	5.15
022 Fuel Wood in Logs	0.0179	185.18	185.87	175.37	-	0.37	+	5.59
023 Fish Live Fresh or Chilled	1.7295	217.27	216.65	192.81	+	0.29	+	12.69
Ores/Minerals, Elec., Gas & Water	12.0069	373.31	387.71	229.06	-	3.71	+	<u>62.97</u>
024 Coal not Agglomerated	0.7508	194.29	194.29	180.41	+	0.00	+	7.69
025 Natural Gas Liquefied	5.7065	419.55	419.75	244.21	-	0.05	+	<u>71.80</u>
026 Salt & Pure Sodium Chloride	0.0584	368.61	354.57	309.39	+	3.96	+	19.14
027 Electrical Energy	5.4912	349.79	381.22	219.11	-	8.24	+	<u>59.64</u>
Food, Beverages, Tobacco, Textil	31.1122	264.39	263.95	248.47	+	0.17	+	6.41
Food Products, Beverages &	20.0718	277.42	279.03	261.91	-	0.58	+	5.92
028 Meat of Animals	3.4559	299.24	286.10	231.68	+	4.59	+	29.16
029 Vegetables & Fruit Juice	0.0058	238.84	238.43	215.11	+	0.17	+	11.03
030 Dried Fruits & Nuts	0.1733	381.35	384.20	335.30	-	0.74	+	13.73
031 Fruit Juices	0.3880	259.43	257.02	220.22	+	0.94	+	17.80
032 Vegetable Oils Refined	1.9242	272.29	271.88	293.99	+	0.15	-	7.38
033 Vegetable Ghee	1.5632	312.69	312.04	386.72	+	0.21	-	19.14
034 Oil Cakes	0.9611	268.05	267.35	259.13	+	0.26	+	3.44
035 Processed Liquid Milk	4.4437	255.81	255.81	230.24	+	0.00	+	11.11
036 Milk & Cream in Solid Form	0.0316	261.07	258.39	222.71	+	1.04	+	17.22
037 Ice Cream	0.0047	199.18	199.18	182.12	+	0.00	+	9.37
038 Dairy Products N.E.C	0.0117	279.26	276.46	225.80	+	1.01	+	23.68
039 Wheat Flour	2.3034	316.73	350.16	339.30	-	9.55	-	6.65
040 Other Cereal Flour	0.0604	229.55	232.71	230.65	-	1.36	-	0.48
041 Sugar Refined	1.7975	235.40	235.22	196.73	+	0.08	+	19.66
042 Chocolate	0.0139	122.88	122.88	101.82	+	0.00	+	20.68
043 Sugar Confectionary	0.0738	236.84	236.84	215.10	+	0.00	+	10.11
044 Coffee & Tea	0.7303	270.02	271.36	248.42	-	0.49	+	8.69
045 Spices	0.1449	349.24	371.24	216.05	-	5.93	+	<u>61.65</u>
046 Other Food Products	0.0336	235.20	231.88	158.57	+	1.43	+	48.33
047 Mineral Water	0.0207	211.31	212.01	184.61	-	0.33	+	14.46
048 Beverages	0.6303	258.88	258.68	210.88	+	0.08	+	22.76
049 Tobacco Products	1.2998	259.58	259.58	259.58	+	0.00	+	0.00
Textiles & Apparels	10.3289	244.42	240.03	227.85	+	1.83	+	7.27
050 Cotton Yarn	5.2491	239.61	239.61	239.61	+	0.00	+	0.00
051 Nylon Yarn	0.1719	95.24	95.24	95.24	+	0.00	+	0.00
052 Blended Yarn	0.1689	148.12	148.12	148.12	+	0.00	+	0.00
053 Woven Fabrics	0.0128	255.48	243.83	192.24	+	4.78	+	32.90
054 Cotton Fabrics	0.6343	332.90	322.82	265.61	+	3.12	+	25.33
055 Other Fabrics	1.1016	235.02	213.57	208.22	+	10.04	+	12.87
056 Silk & Reyon Fabrics	0.7350	369.13	354.49	304.75	+	4.13	+	21.13
057 Towels	0.1235	197.87	195.75	181.11	+	1.08	+	9.25
058 Blankets	0.0029	147.74	145.65	138.45	+	1.43	+	6.71

Annexure C: Wholesale Price Indices by Major Groups & Commodities (2015-16=100)

Item and Specification	Weight	Index Numbers			% Change in Apr 2024 over	
		Apr 24	Mar 24	Apr 23	Mar 2024	Apr 2023
059 Bed Sheets	0.0913	167.37	167.37	162.26	+ 0.00	+ 3.15
060 Quilts	0.0019	234.52	234.52	175.10	+ 0.00	+ 33.93
061 Woolen Carpets	0.0383	173.86	173.86	166.01	+ 0.00	+ 4.73
062 Synthetic Carpets	0.0566	150.83	150.83	132.43	+ 0.00	+ 13.89
063 Hosiery Products	0.8832	192.93	192.58	181.53	+ 0.18	+ 6.28
064 Readymade Garments	1.0576	240.76	237.17	206.01	+ 1.51	+ 16.87
Leather Products	0.7115	186.88	185.68	168.62	+ 0.65	+ 10.83
065 Leather Without Hair	0.2973	182.58	181.35	157.44	+ 0.68	+ 15.97
066 Other Leather N.E.C	0.2567	158.95	158.95	153.47	+ 0.00	+ 3.57
067 Footwears	0.1575	240.49	237.41	214.40	+ 1.30	+ 12.17
Other Transportable Goods	22.3979	353.82	351.98	328.10	+ 0.52	+ 7.84
068 Timber	0.0165	228.98	228.98	204.20	+ 0.00	+ 12.14
069 Printing Paper	0.4279	219.95	230.55	276.13	- 4.60	- 20.35
070 Hard Board	0.1579	209.29	209.29	209.29	+ 0.00	+ 0.00
071 Motor Spirit	1.6268	414.81	397.40	393.99	+ 4.38	+ 5.28
072 Diesel Oil	5.4849	363.57	361.59	371.99	+ 0.55	- 2.26
073 Kerosene Oil	0.2151	372.11	371.33	359.25	+ 0.21	+ 3.58
074 Furnace Oil	3.2664	604.82	605.83	528.21	- 0.17	+ 14.50
075 Mobil Oil	0.7114	236.05	236.05	217.84	+ 0.00	+ 8.36
076 Chemicals	1.7720	278.10	278.10	327.64	+ 0.00	- 15.12
077 Dyeing Material	0.1539	220.27	220.27	220.27	+ 0.00	+ 0.00
078 Fertilizers	2.8657	273.27	270.64	202.93	+ 0.97	+ 34.66
079 Pesticides	0.2763	185.94	185.91	157.58	+ 0.02	+ 18.00
080 Insecticides	0.1276	151.05	151.05	111.49	+ 0.00	+ 35.48
081 Paints & Varnishes	0.1916	269.25	269.25	233.95	+ 0.00	+ 15.09
082 Medicines	1.1428	323.96	323.95	276.63	+ 0.00	+ 17.11
083 Soaps & Detergents	0.8168	228.70	226.33	204.66	+ 1.05	+ 11.75
084 Auto Tyres	0.2703	246.79	246.79	243.22	+ 0.00	+ 1.47
085 Plastic Products	0.4550	193.97	193.80	156.71	+ 0.09	+ 23.78
086 Glass sheets	0.2089	355.31	355.31	277.54	+ 0.00	+ 28.02
087 Other Glass Articles	0.1635	209.73	209.51	173.05	+ 0.11	+ 21.20
088 Ceramics & Sanitary Fixture	0.0244	207.38	207.38	179.64	+ 0.00	+ 15.44
089 Bricks, Blocks & Tiles	0.1566	190.36	190.36	167.76	+ 0.00	+ 13.47
090 Cement	1.8145	245.68	245.68	207.57	+ 0.00	+ 18.36
091 Bed Foam	0.0006	332.28	332.28	297.47	+ 0.00	+ 11.70
092 Matches	0.0505	3323.96	3323.96	2824.35	+ 0.00	+ 17.69
Metal Product, Machinery & Equipments	8.7156	380.21	380.58	347.73	- 0.10	+ 9.34
093 Steel Bar & Sheets	1.4615	349.92	352.08	357.92	- 0.61	- 2.24
094 Pipe Fittings	0.0780	435.75	435.75	403.20	+ 0.00	+ 8.07
095 Steel Products	0.3879	245.52	245.52	208.06	+ 0.00	+ 18.00
096 Engines & Motors	0.0046	186.89	186.89	117.67	+ 0.00	+ 58.83
097 Vacuum Pumps	0.0155	107.56	107.56	107.56	+ 0.00	+ 0.00
098 Air Conditioners	0.0049	304.45	304.78	311.17	- 0.11	- 2.16
099 Cultivators	0.0551	361.67	361.67	282.23	+ 0.00	+ 28.15
100 Chuff Cutter	0.1293	504.72	504.72	490.43	+ 0.00	+ 2.91
101 Tractors	0.0028	297.43	297.43	274.86	+ 0.00	+ 8.21
102 Lathe Machines	0.0525	472.24	472.24	408.48	+ 0.00	+ 15.61
103 Concrete Mixture	0.0107	412.08	412.08	255.01	+ 0.00	+ 61.59
104 Fridge,WashM,SewM,Fans,Iron	1.1645	279.22	279.22	239.82	+ 0.00	+ 16.43
105 Electric Wires	0.0912	288.99	288.99	225.87	+ 0.00	+ 27.95
106 Lighting Equipments	1.4431	733.30	733.30	664.91	+ 0.00	+ 10.29
107 Radio & Television	0.1843	196.21	196.21	179.80	+ 0.00	+ 9.13
108 Motor Vehicles	0.0244	256.95	256.95	255.73	+ 0.00	+ 0.48
109 Motorcycles	0.2570	263.76	263.76	253.92	+ 0.00	+ 3.88
110 Bicycles	3.3483	308.80	308.80	275.89	+ 0.00	+ 11.93
