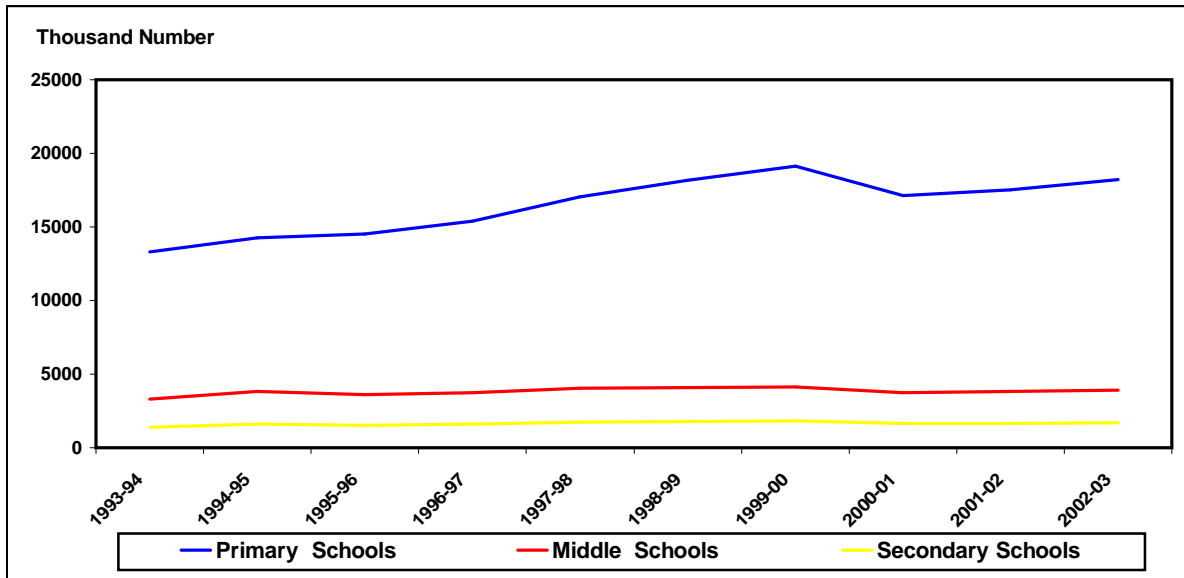


EDUCATION

6.3 Enrolment in Educational Institutions by Kind, Level and Sex

Year	Primary Schools (In thousand)		Middle Schools (In thousand)		Secondary Schools (In thousand)	
	Total	Female	Total	Female	Total	Female
1998-99	18169	6450	4098	1586	1778	656
1999-00	19148	7044	4112	1615	1817	670
2000-01	17136	6893	3759	1706	1648	689
2001-02	17529	7167	3821	1506	1657	659
2002-03	18220	7519	3918	1551	1683	677
2003-04	19781	8179	4321	1737	1901	732
2004-05	21333	9092	4550	1863	2018	785
2005-06	23970	10474	5262	2169	2315	922
2006-07	24465	10762	5368	2241	2486	980
2007-08	24637	10848	5366	2259	2634	1039

Enrolment in Educational Institutions by Kind, Level and Sex



EDUCATION

6.3 Enrolment in Educational Institutions by Kind, Level and Sex

Year	Arts & Science Colleges (In thousand)		Professional colleges (Nos.)		Universities (Nos.)	
	Total	Female	Total	Female	Total	Female
1998-99	780	351	163445	41078	91637	25469
1999-00	792	372	160985	41036	114010	27369
2000-01	763	374	158828	39580	124944	36699
2001-02	751	370	161349	40540	117863	39682
2002-03	802	396	163852	41932	126870	43668
2003-04	905	442	178835	46377	218275	83127
2004-05	1009	495	186802	48340	234142	89105
2005-06	1047	522	202716	50323	227339	93494
2006-07	1097	553	207420	55882	296812	111473
2007-08	1076	546	246757	75055	318281	121988

