

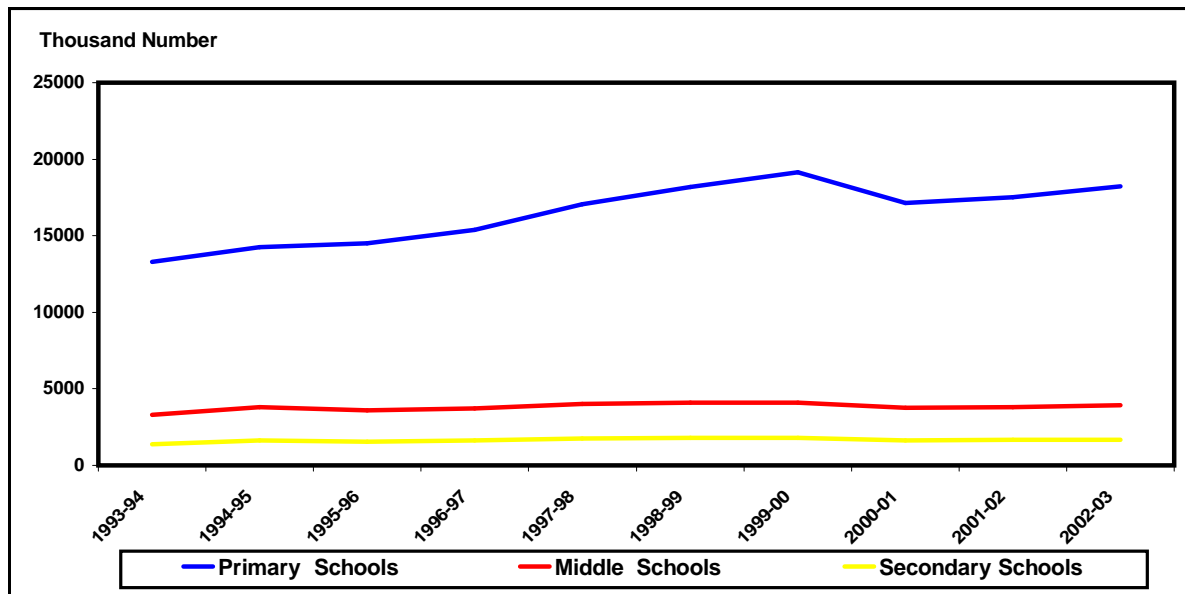
## EDUCATION

### 6.3 Enrolment in Educational Institutions by Kind, Level and Sex

Year	Primary Schools (In thousand)		Middle Schools (In thousand)		Secondary Schools (In thousand)	
	Total	Female	Total	Female	Total	Female
1998-99	18169	6450	4098	1586	1778	656
1999-00	19148	7044	4112	1615	1817	670
2000-01	17135	6893	3759	1706	1648	689
2001-02	17529	7167	3821	1506	1657	659
2002-03	18220	7519	3918	1551	1683	677
2003-04	19781	8179	4321	1737	1901	732
2004-05	21333	9092	4550	1863	2018	785
2005-06	23970	10474	5262	2169	2315	922
2006-07	24465	10762	5368	2241	2486	980
2007-08(E)	25509	11319	5640	2367	N.A.	N.A.

E=Estimated

### Enrolment in Educational Institutions by Kind, Level and Sex



## EDUCATION

## 6.3 Enrolment in Educational Institutions by Kind, Level and Sex

Year	Arts & Science Colleges (In thousand)		Professional colleges (Nos.)		Universities (Nos.)	
	Total	Female	Total	Female	Total	Female
1998-99	780	351	163445	41078	91637	25469
1999-00	792	372	160985	41036	114010	27369
2000-01	763	374	158828	39580	124944	36699
2001-02	751	370	161349	40540	117863	39682
2002-03	802	396	163852	41932	126870	43668
2003-04	905	442	178835	46377	218275	83127
2004-05	1009	495	186802	48340	234142	89105
2005-06	1047	522	202716	50323	227339	93494
2006-07	1097	553	207420	55882	296812	111473
2007-08	N.A.	N.A.	N.A.	N.A.	N.A.	N.A.

