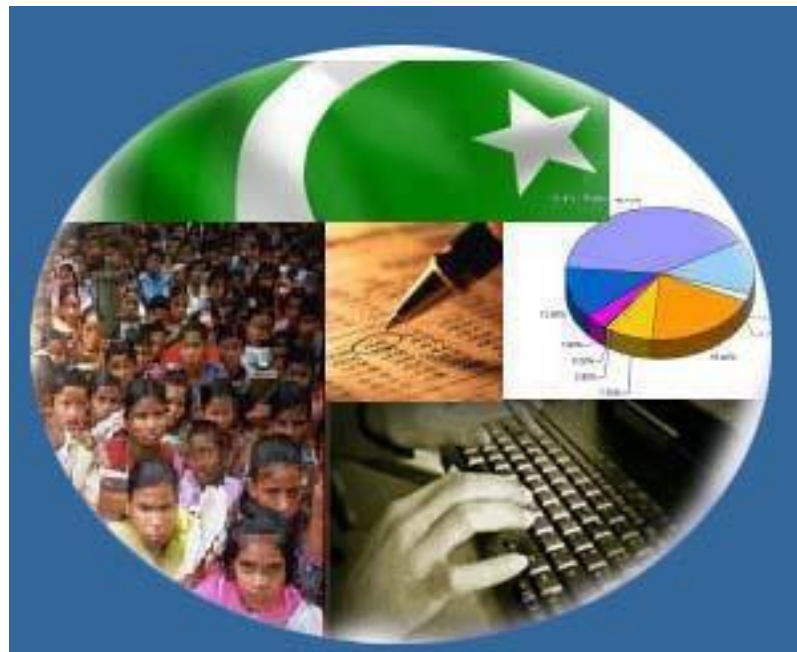




Monthly Review on Price Indices



December, 2018
(Base 2007-08)

Government of Pakistan
Ministry of Statistics
Pakistan Bureau of Statistics
Islamabad

Inflation in Brief

1. CPI inflation General increased by 6.2% on year-on-year basis in December 2018 as compared to an increase of 6.5% in the previous month and 4.6% in December 2017. On month-on-month basis, it decreased by 0.4% in December 2018 as compared to an increase of 0.1% in the previous month and decrease of 0.1% in December 2017.
2. Core inflation measured by non-food non-energy CPI (Core NFNE) increased by 8.4% on (YoY) basis in December 2018 as compared to an increase of 8.3% in the previous month and 5.5% in December 2017. On (MoM) basis, it increased by 0.3% in December 2018 as compared to an increase of 0.4% in previous month, and an increase of 0.2% in corresponding month of last year i.e. December 2017.
3. Core inflation, measured by 20% weighted trimmed mean CPI (Core Trimmed) increased by 6.9% on (YoY) basis in December 2018 as compared to 6.7% in the previous month and by 4.7% in December 2017. On (MoM) basis, it increased by 0.3% in December 2018 as compared to an increase of 0.3% in the previous month and an increase of 0.2% in corresponding month of last year i.e. December 2017.
4. The CPI by Income Quintiles and Commodity Groups for December 2018 (MoM and YoY) is placed at Annexure-C.
5. SPI inflation on YoY basis increased by 2.0% in December 2018 as compared to an increase of 1.3% a month earlier and an increase of 2.2% in December 2017. On MoM basis, no change is observed in December 2018 as compared to an increase of 0.3% in the previous month and a decrease of 0.7% in corresponding month of last year i.e. December 2017.
6. WPI inflation on YoY basis increased by 12.1% in December 2018 as compared to an increase of 13.5% a month earlier and an increase of 3.4% in December 2017. WPI inflation on MoM basis decreased by 0.9% in December 2018 as compared to a increase of 0.7% a month earlier and an increase of 0.4% in corresponding month of last year i.e. December 2017.
7. Figures 1 and 2 show graphically the data of Table1. Table1.1 shows "Period Average" and "YoY" percent changes in indices of three years.

Table 1: Inflation (%) (Base 2007-08)														
Period	CPI						Core Inflation				SPI**		WPI	
	General		Food		Non-food		NFNE*		Trimmed		YoY	MoM	YoY	MoM
	YoY	MoM	YoY	MoM	YoY	MoM	YoY	MoM	YoY	MoM				
Nov-17	4.0	0.4	2.4	0.4	5.1	0.4	5.5	0.3	4.2	0.3	2.1	0.3	2.9	0.4
Dec-17	4.6	-0.1	3.8	-0.6	5.1	0.2	5.5	0.2	4.7	0.2	2.2	-0.7	3.4	0.4
Jan-18	4.4	0.0	3.7	-1.0	4.9	0.8	5.2	0.8	4.6	0.6	2.0	-1.0	4.7	1.8
Feb-18	3.8	-0.3	2.2	-1.1	4.9	0.2	5.2	0.2	4.3	0.1	0.5	-1.2	4.1	-0.1
Mar-18	3.2	0.3	0.1	-0.3	5.4	0.7	5.8	0.7	4.1	0.2	-1.8	-0.6	3.6	0.2
Apr-18	3.7	1.8	-0.2	1.5	6.4	2.1	7.0	2.5	5.0	1.6	-0.5	0.4	4.0	1.3
May-18	4.2	0.5	1.0	1.0	6.4	0.2	7.0	0.2	5.1	0.3	0.5	0.1	5.6	1.3
Jun-18	5.2	0.6	3.0	0.8	6.7	0.4	7.1	0.3	5.4	0.2	1.9	1.8	7.6	1.5
Jul-18	5.8	0.9	3.5	0.6	7.4	1.2	7.6	1.2	5.9	0.9	3.6	1.2	10.5	2.4
Aug-18	5.8	0.2	3.3	0.2	7.6	0.2	7.7	0.2	5.9	0.2	3.3	0.2	11.0	0.8
Sep-18	5.1	-0.1	1.4	-0.7	7.7	0.3	8.0	0.4	5.8	0.1	1.0	-0.1	9.2	-1.5
Oct-18	6.8	2.3	2.7	1.9	9.6	2.6	8.2	1.1	6.7	0.8	1.3	1.1	13.1	4.2
Nov-18	6.5	0.1	1.8	-0.5	9.8	0.5	8.3	0.4	6.7	0.3	1.3	0.3	13.5	0.7
Dec-18	6.2	-0.4	0.9	-1.4	9.8	0.2	8.4	0.3	6.9	0.3	2.0	0.0	12.1	-0.9

*NFNE is non-food non-energy, ** SPI for quintile 1. Digits 0.0* are due to rounding off.

Table 1.1 : Period Average and YoY % Changes of Indices (Base 2007-08)						
Index	Average July - December % changes			December over December % changes		
	2018-19	2017-18	2016-17	2018	2017	2016
CPI	6.05	3.75	3.88	6.17	4.57	3.70
SPI	2.06	1.33	1.35	1.97	2.24	0.53
WPI	11.58	1.96	3.06	12.09	3.39	3.08

Figure 1: CPI Inflation YoY, Special Indices

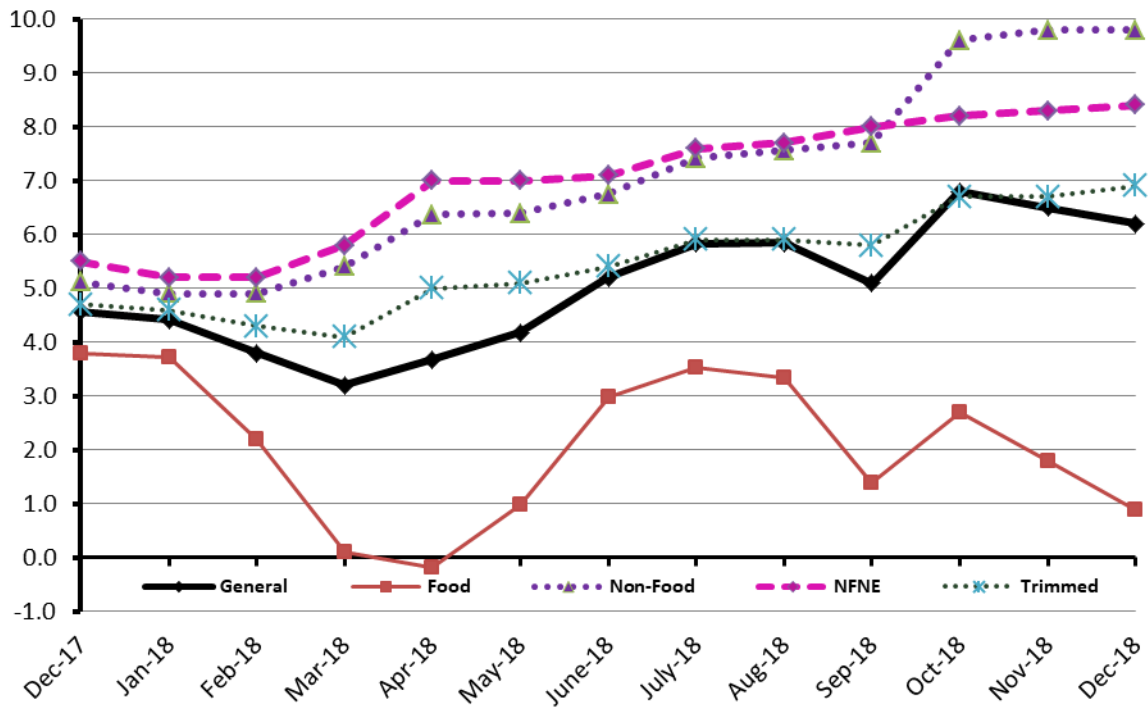
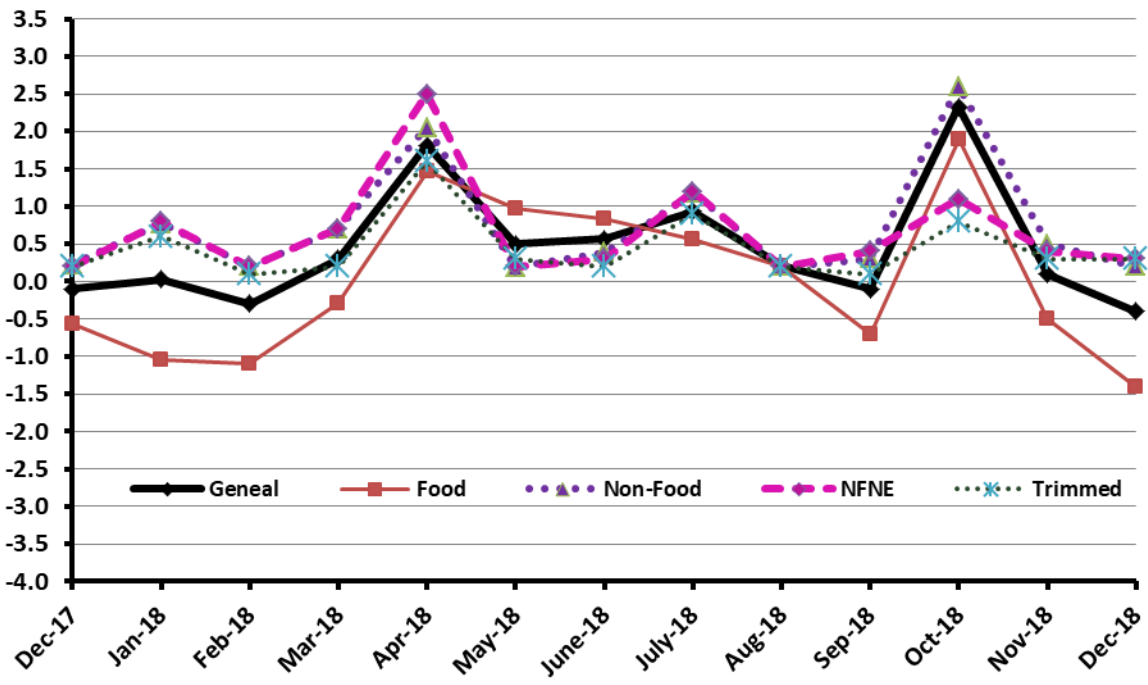


Figure 2: CPI Inflation MoM, Special Indices



I. Consumer Price Index (CPI)

The Consumer Price Index of November, 2018 is decreased by 0.41% over November 2018 and increased by 6.17% over corresponding month of the last year i.e. December 2017.

Table 2 : Consumer Price Index by Group of Commodities and Services (Base 2007-08)

No	Group	Group Weight (%)	Indices			% Change December 2018 Over		Impact (In % points) December 2018 Over	
			Dec 2018	Nov 2018	Dec 2017	Nov 2018	Dec 2017	Nov 2018	Dec 2017
	General	100.00	233.78	234.75	220.20	-0.41	6.17	-0.41	6.17
1.	Food & Non-alcoholic Bev.	34.83	235.23	239.03	235.12	-1.59	0.05	-0.56	0.02
	<i>Non-perishable Food Items</i>	29.84	241.80	241.01	229.97	0.33	5.14	0.10	1.60
	<i>Perishable Food Items</i>	4.99	195.93	227.24	265.91	-13.78	-26.32	-0.67	-1.59
2.	Alcoholic Bev.& Tobacco	1.41	349.35	348.01	305.76	0.39	14.26	0.01	0.28
3.	Clothing & Footwear	7.57	260.69	259.07	241.98	0.63	7.73	0.05	0.64
4.	Housing, Water, Electricity, Gas & Fuels	29.41	219.28	219.24	201.02	0.02	9.08	0.01	2.44
5.	Furnishing & Household Equipment Maintenance	4.21	250.21	247.76	230.93	0.99	8.35	0.04	0.37
6.	Health	2.19	235.76	235.08	217.34	0.29	8.48	0.01	0.18
7.	Transport	7.20	212.38	213.81	179.67	-0.67	18.21	-0.04	1.07
8.	Communication	3.22	143.57	143.57	133.14	0.00	7.83	0.00	0.15
9.	Recreation & Culture	2.02	214.52	214.35	197.68	0.08	8.52	0.00	0.15
10.	Education	3.94	289.55	288.62	262.35	0.32	10.37	0.02	0.49
11.	Restaurants & Hotels	1.23	301.38	298.19	285.32	1.07	5.63	0.02	0.09
12.	Miscellaneous	2.76	275.96	272.18	253.25	1.39	8.97	0.04	0.28

Main contributors to month-on-month and year-on-year percentage changes are given below and detail is given in Annexure A.

1. Month-on-month Top few commodities which varied from previous month are given below: -

Food Increased: Honey (5.61%), Pulse Moong (4.06%), Pulse Gram (2.96%), Beans (2.71%), Pulse Mash (2.55%), Pulse Masoor (2.29%), Cooking Oil (1.92%) and Dry Fruits (1.74%).

Decreased: Fresh Vegetables (21.78%), Tomatoes (21.14%), Potatoes (20.23%), Onions (13.23%), Chicken (6.8%), Fresh Fruits (1.83%) and Eggs (1.31%).

Non-food Increased: Personal Equipment (2.69%), Motor Vehicles Accessories (2.4%), Woollen Readymade Garments (2.07%), Washing Soap & Detergents (1.44%), Plastic Products (1.41%), Household Servant (1.18%) and Mechanical Services (1.17%).

Decreased: Transport services (1.57%), Kerosene Oil (1.01%) and Motor Fuel (0.67%).

Year-on-Year: Top few commodities which varied from previous year i.e. December, 2017 are given below:-

Food Increased: Spices (14.95%), Meat (13.21%), Cigarettes (12.72%), Honey (12.43%), Tea (11.11%) Dry Fruits (10.43%), Rice (8.89%), Chicken (8.86%) and Sweet Meat (7.95%).

Decreased: Tomatoes (56.3%), Onion (53.45%), Potatoes (36.09%), Fresh Vegetables (27.00%), Gram Whole (9.35%), Eggs (9.05%), Pulse Mash (6.32%) and Besan (3.17%).

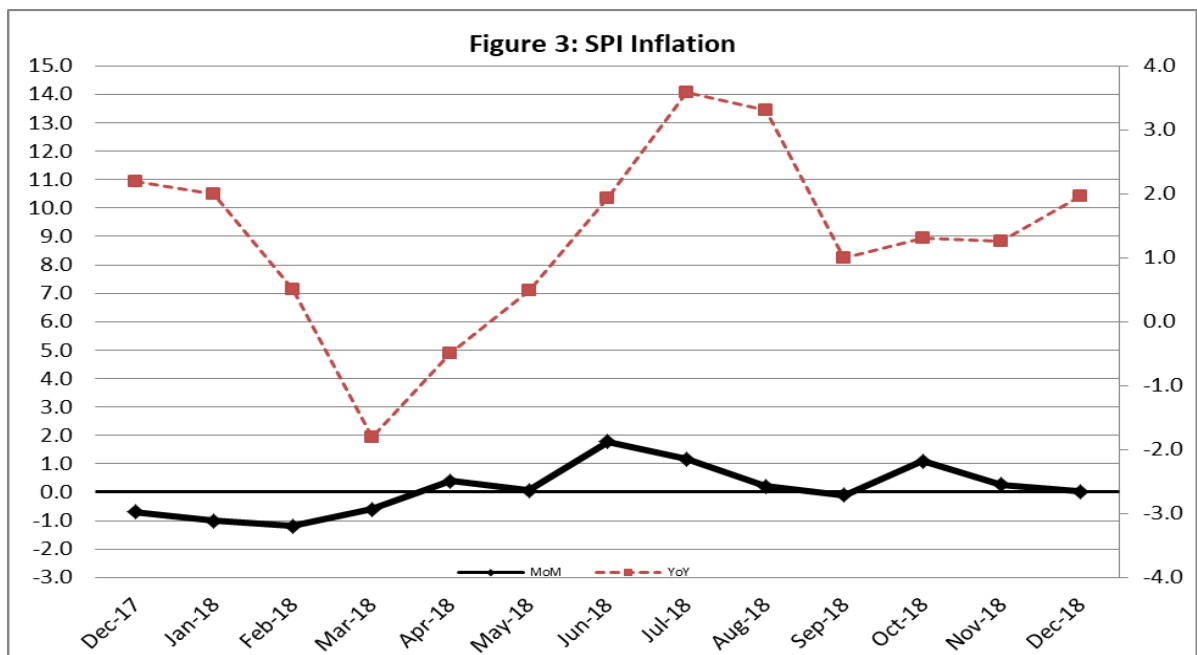
Non-food Increased: Gas (85.31%), Newspapers (27.42%), Motor Fuel (25.75%), Kerosene Oil (22.15%), Transport Services (15.95%), Motor Vehicles (14.89%), Water Supply (13.62%), Personal Equipment (12.13%), Construction Input Items (11.94%), Cosmetics (11.52%), Utensils (11.43%) and Construction Wage Rates (10.41%).

II. Sensitive Price Indicator

Quintile-wise percentage changes YoY and MoM are given below in Table 3. The series from December 2017 to December 2018 is also graphed below in Figure 3.

Table 3: Sensitive Price Indicator (Base 2007-08)					
Quintiles	Indices			% Change Dec, 2018 over	
	December, 2018	November, 2018	December, 2017	November, 2018	December, 2017
1	219.71	219.66	215.47	0.02	1.97
2	229.03	229.04	223.27	0.00	2.58
3	230.88	230.97	224.68	-0.04	2.76
4	242.94	243.15	229.09	-0.09	6.05
5	248.30	248.74	226.47	-0.18	9.64
Combined	238.12	238.35	225.66	-0.10	5.52

Table 3.1 : Weekly Percentage Change of SPI During December, 2018				
Quintiles	% Change with Previous week			
	27.12.2018	20.12.2018	13.12.2018	06.12.2018
Quintile 1	0.23	0.17	0.00	-0.39
Combined	0.19	0.12	-0.05	-0.55



III. Wholesale Price Index

The Wholesale Price Index for December, 2018 decreased by 0.88% over November, 2018. It increased by 12.09% over the corresponding month of the last year. YoY and MoM movements, from December, 2017 to December, 2018 are also graphed below in Figure 4.

Main contributors to month-on-month and year-on-year percentage changes are given below and detail is given in Annexure B.

Table 4 : Wholesale Price Index by Group of Commodities (Base 2007-08)

No.	Group	Group Weight (%)	Indices			% Change Dec, 2018 over		Impact (in %age points) Dec, 2018 over	
			Dec. 2018	Nov. 2018	Dec, 2017	Nov. 2018	Dec, 2017	Nov. 2018	Dec, 2017
	General	100.00	247.72	249.92	221.00	-0.88	12.09	-0.88	12.09
1.	Agriculture, Forestry & Fishery Products	25.77	266.70	271.62	252.94	-1.81	5.44	-0.51	1.60
2.	Ores & Minerals, Electricity, Gas & Water	12.04	293.54	293.14	243.79	0.14	20.41	0.02	2.71
3.	Food Products, Beverages & Tobacco, Textiles, Apparel & Leather Products	31.11	251.73	249.98	227.93	0.70	10.44	0.22	3.35
	i. Food Products, Bev. & Tobacco	20.07	256.60	255.75	238.68	0.33	7.51	0.07	1.63
	ii. Textiles and Apparel	10.33	242.51	238.88	209.26	1.52	15.89	0.15	1.55
	iii. Leather Products	0.71	248.38	248.38	195.77	0.00	26.87	0.00	0.17
4.	Other Transportable Goods except Metal Products, Machinery & Equipment	22.37	218.04	224.71	179.11	-2.97	21.74	-0.60	3.94
5.	Metal Products, Machinery & Equipment	8.72	190.19	190.55	177.80	-0.19	6.97	-0.01	0.49

1. **Month-on-month** Top few commodities which varied from previous month i.e. November, 2018 are given below:-

Increased: Lathe Machine (11.49%), Wool (5.12%), Jowar (3.87%), Motorcycles (3.10%), Sugar Crops (2.93%), Silk & Reyon Fabrics (2.89%), Readymade Garments (2.54%), Maize (2.26%), Pulses (2.15%), Spices (2.06%), Sugar (1.94%), Rice (1.90%), Dry Fruits (1.77%), Cotton Yarn (1.69%), Coffee & Tea (1.68%), Milk and Cream in Solid Form (1.67%), Other Fabrics (1.60%), Vegetable Ghee (1.51%), Blankets (1.44%), Dried Fruits & Nuts (1.33%) and Auto Tyres (1.14%).

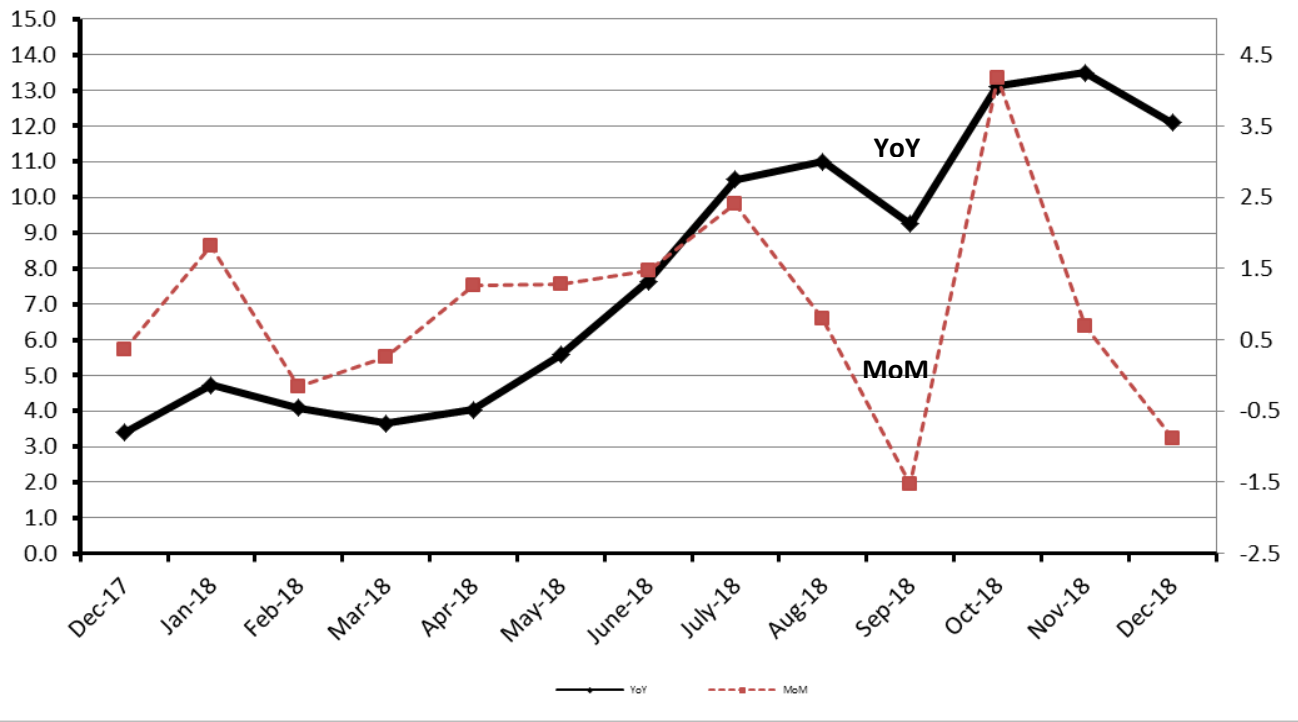
Decreased: Vegetables (30.04%), Potatoes (15.91%), Furnace Oil (15.75%), Bajra (9.57%), Poultry (8.28%), Stimulant & Spice Crops (4.78%), Diesel (3.91%), Eggs (3.75%), Kerosene Oil (3.47%), and Fresh Fruits (2.50%).

2. **Year-on-year** Top few commodities which varied from previous year i.e. December, 2017 are given below:-

Increased: Other Leather N.E.C (54.65%), Furnace Oil (51.70%), Natural Gas Liquefied (48.92%), Kerosene Oil (45.36%), Diesel (37.88%), Fibre Crops (35.09%), Hard Board (29.63%), Jowar (28.48%), Bajra (27.40%), Cotton Yarn (27.24%), Lathe Machine (24.12%), Petrol (23.71%), Tobacco Products (23.69%), Steel Bar & Sheets (21.88%), Paints & Varnishes (19.85%), Stimulant & Spice Crops (19.15%), Chemicals (18.35%), Fertilizers (16.25%), Foot wears (15.52%), Motor Vehicles (14.63%), Maize (13.62%), Cement (13.23%), Coffee & Tea (12.92%), Tractors (12.48%) and Spices (12.30%).

Decreased: Vegetables (46.21%), Potatoes (33.91%), Eggs (12.91%), Hides & Fur Skins (11.33%), Pulses (6.25%), Fish (1.05%).

Figure 4: WPI Inflation



Annexure – A: CPI by Commodity Groups and Commodities (2007-08=100)

Item and Specification	Weight	Index Numbers			% Change in Dec 2018 over		
		Dec 2018	Nov 2018	Dec 2017	Nov 2018	Dec 2017	
<i>General</i>	100.00	233.78	234.75	220.20	-	0.41	+ 6.17
<i>Food and non-alcoholic Beverages</i>	34.834	235.23	239.03	235.12	-	1.59	+ 0.05
1 Wheat	0.3477	207.82	206.42	203.16	+	0.68	+ 2.29
2 Wheat Flour	4.1648	216.23	215.36	212.54	+	0.40	+ 1.74
3 Wheat Product	0.0959	217.36	215.82	215.00	+	0.71	+ 1.10
4 Besan	0.1500	270.56	266.48	279.43	+	1.53	- 3.17
5 Rice	1.5821	201.41	199.78	184.97	+	0.82	+ 8.89
6 Cereals	0.1563	267.98	265.77	257.59	+	0.83	+ 4.03
7 Bakery & Confectionary	1.1550	230.70	229.76	222.54	+	0.41	+ 3.67
8 Nimco	0.4574	261.71	261.15	257.02	+	0.21	+ 1.82
9 Meat	2.4303	325.16	322.09	287.23	+	0.95	+ 13.21
10 Chicken	1.3596	207.54	222.68	190.64	-	6.80	+ 8.86
11 Fish	0.2970	230.75	228.89	219.86	+	0.81	+ 4.95
12 Milk Fresh	6.6800	288.19	287.73	277.89	+	0.16	+ 3.71
13 Milk Products	0.6338	279.87	279.73	268.37	+	0.05	+ 4.29
14 Milk Powder	0.1129	253.78	251.43	237.44	+	0.93	+ 6.88
15 Eggs	0.4555	241.73	244.95	265.77	-	1.31	- 9.05
16 Mustard Oil	0.0952	165.01	165.01	162.61	+	0.00	+ 1.48
17 Cooking Oil	1.7538	146.12	143.37	138.59	+	1.92	+ 5.43
18 Vegetable Ghee	2.0714	152.03	149.98	143.53	+	1.37	+ 5.92
19 Dry Fruits	0.2543	303.03	297.85	274.40	+	1.74	+ 10.43
20 Fresh Fruits	1.8649	221.04	225.16	225.51	-	1.83	- 1.98
21 Pulse Masoor	0.2712	163.64	159.97	163.83	+	2.29	- 0.12
22 Pulse Moong	0.2336	231.90	222.86	215.02	+	4.06	+ 7.85
23 Pulse Mash (Washed)	0.2098	218.10	212.68	232.82	+	2.55	- 6.32
24 Pulse Gram	0.2361	276.84	268.87	265.48	+	2.96	+ 4.28
25 Gram Whole	0.1616	266.58	265.08	294.07	+	0.57	- 9.35
26 Beans	0.0269	257.17	250.39	240.94	+	2.71	+ 6.74
27 Potatoes	0.4452	183.90	230.55	287.74	-	20.2	- 36.09
28 Onion	0.5093	173.80	200.31	373.37	-	13.2	- <u>53.45</u>
29 Tomatoes	0.4172	106.79	135.42	244.37	-	21.1	- <u>56.30</u>
30 Fresh Vegetables	1.7543	201.68	257.83	276.29	-	21.7	- 27.00
31 Sugar	1.0445	200.11	197.86	195.22	+	1.14	+ 2.50
32 Gur	0.0220	259.69	260.99	260.27	-	0.50	- 0.22
33 Honey	0.0446	381.37	361.11	339.20	+	5.61	+ 12.43
34 SweetMeat	0.2483	274.96	274.99	254.71	-	0.01	+ 7.95
35 Beverages	1.1990	233.54	234.44	225.93	-	0.38	+ 3.37
36 Jam, Tomato Ketchup & Pickles	0.2454	237.94	236.33	223.90	+	0.68	+ 6.27
37 Condiments	0.2656	290.89	289.66	274.69	+	0.42	+ 5.90
38 Spices	0.5441	274.09	272.35	238.45	+	0.64	+ 14.95
39 Tea	0.8377	315.81	310.54	284.22	+	1.70	+ 11.11
<i>Alcoholic Beverages, Tobacco</i>	1.4135	349.35	348.00	305.76	+	0.39	+ 14.26
40 Cigarettes	1.3906	345.08	343.62	306.13	+	0.42	+ 12.72
41 Betel Leaves & Nuts	0.0229	608.69	614.21	283.31	-	0.90	+ 114.85
<i>Clothing and footwear</i>	7.5708	260.69	259.07	241.98	+	0.63	+ 7.73
42 Cotton Cloth	1.7286	252.80	250.74	234.53	+	0.82	+ 7.79
43 Woolen Cloth	0.8759	279.67	277.56	259.82	+	0.76	+ 7.64
44 Readymade Garments	0.9739	268.40	267.64	250.26	+	0.28	+ 7.25
45 Woolen Readymade Garments	0.3964	285.91	280.10	268.48	+	2.07	+ 6.49
46 Hosiery	0.5094	273.10	272.44	254.53	+	0.24	+ 7.30

Annexure A: CPI by Commodity Groups and Commodities (2007-08=100)

Item and Specification	Weight	Index Numbers			% Change in Dec 2018 over			
		Dec 2018	Nov 2018	Dec 2017	Nov 2018	Dec 2017		
47 Dopatta	0.4412	271.39	271.05	249.21	+	0.13	+	8.90
48 Cleaning and Laundry	0.2110	296.59	295.39	275.28	+	0.41	+	7.74
49 Tailoring	0.8840	356.47	353.67	329.52	+	0.79	+	8.18
50 Footwear	1.5504	180.86	180.49	167.58	+	0.20	+	7.92
<u>Housing, water, Elec., Gas and other</u>	29.4149	219.28	219.24	201.02	+	0.02	+	9.08
51 House Rent	21.8149	207.09	207.09	194.05	+	0.00	+	6.72
52 Construction Input Items	0.5623	290.47	289.23	259.48	+	0.43	+	11.94
53 Construction Wage Rates	0.3331	277.35	276.45	251.20	+	0.33	+	10.41
54 Water Supply	0.4971	194.95	194.95	171.58	+	0.00	+	13.62
55 Electricity	4.3985	238.10	238.10	238.10	+	0.00	+	0.00
56 Gas	1.5756	292.94	292.94	158.08	+	0.00	+	<u>85.31</u>
57 Kerosene Oil	0.0057	275.39	278.21	225.46	-	1.01	+	22.15
58 Firewood Whole	0.2277	305.35	303.78	295.82	+	0.52	+	3.22
<u>Furnishing and household</u>	4.2082	250.22	247.76	230.93	+	0.99	+	8.35
59 Furniture	0.3315	247.26	244.56	224.47	+	1.10	+	10.15
60 Household Textiles	0.6489	249.62	248.54	234.44	+	0.43	+	6.48
61 Household Equipment	0.5936	197.85	196.96	183.53	+	0.45	+	7.80
62 Utensils	0.3212	265.24	262.52	238.03	+	1.04	+	11.43
63 Plastic Products	0.2547	237.13	233.84	215.30	+	1.41	+	10.14
64 Washing Soaps & Detergents	0.7893	256.02	252.39	233.55	+	1.44	+	9.62
65 Sewing Needle & Dr Cell	0.1496	225.74	223.94	209.80	+	0.80	+	7.60
66 Household Servant	1.0432	277.43	274.20	258.89	+	1.18	+	7.16
67 Marriage Hall Charges	0.0762	272.06	272.04	252.09	+	0.01	+	7.92
<u>Health</u>	2.1868	235.75	235.09	217.33	+	0.28	+	8.48
68 Drugs & Medicines	1.2667	199.56	198.54	186.36	+	0.51	+	7.08
69 Medical Equipments	0.0080	267.75	266.60	255.46	+	0.43	+	4.81
70 Doctor (MBBS) Clinic Fee	0.5904	320.01	320.01	290.92	+	0.00	+	10.00
71 Medical Tests	0.3217	222.85	222.39	203.28	+	0.21	+	9.63
<u>Transport</u>	7.2023	212.38	213.81	179.67	-	0.67	+	18.21
72 Motor Vehicles	0.6630	204.45	203.52	177.95	+	0.46	+	14.89
73 Motor Vehicle Accessories	0.2439	235.16	229.64	214.92	+	2.40	+	9.42
74 Motor Fuel	3.0269	195.52	196.83	155.48	-	0.67	+	25.75
75 Mechanical Service	0.4552	251.72	248.80	233.41	+	1.17	+	7.84
76 Motor Vehicle Tax	0.1099	210.18	210.18	210.18	+	0.00	+	0.00
77 Transport Services	2.7034	224.60	228.18	193.71	-	1.57	+	15.95
<u>Communication</u>	3.2198	143.57	143.57	133.15	+	0.00	+	7.83
78 Postal Services	0.0662	272.63	272.63	253.38	+	0.00	+	7.60
79 Communication & Apparatus	3.1536	140.86	140.86	130.62	+	0.00	+	7.84
<u>Recreation and culture</u>	2.0227	214.51	214.34	197.65	+	0.08	+	8.53
80 Recreation & Culture	0.8634	137.61	137.58	130.44	+	0.02	+	5.50
81 Text Books	0.5706	304.92	304.92	287.98	+	0.00	+	5.88
82 Newspapers	0.1934	235.21	235.21	184.59	+	0.00	+	27.42
83 Stationery	0.3953	241.84	241.07	220.48	+	0.32	+	9.69
<u>Education</u>	3.9431	289.54	288.62	262.35	+	0.32	+	10.36
84 Education	3.9431	289.54	288.62	262.35	+	0.32	+	10.36
<u>Restaurants and hotels</u>	1.2286	301.38	298.18	285.32	+	1.07	+	5.63
85 Readymade Food	1.2286	301.38	298.18	285.32	+	1.07	+	5.63
<u>Misc. goods and services</u>	2.7550	275.96	272.19	253.23	+	1.39	+	8.98
86 Personal Care	1.4935	246.54	245.08	232.45	+	0.60	+	6.06
87 Cosmetics	0.3853	231.29	230.19	207.40	+	0.48	+	11.52
88 Blades	0.0322	211.72	210.38	201.21	+	0.64	+	5.22
89 Personal Equipments	0.8440	350.88	341.68	312.92	+	2.69	+	12.13

Annexure B: Wholesale Price Indices by Major Groups & Commodities (2007-08=100)

Item and Specification	Weight	Index Numbers			% Change in Dec 2018 over			
		Dec 18	Nov 18	Dec 17	Nov 2018	Dec 2017		
General	100.0000	247.72	249.92	221.00	-	0.88	+	12.09
Agriculture Forestry & Fisher	25.7674	266.70	271.62	252.94	-	1.81	+	5.44
001 Wheat	0.6297	213.18	211.76	207.62	+	0.67	+	2.68
002 Maize	0.6764	224.19	219.23	197.32	+	2.26	+	13.62
003 Rice	2.4413	187.06	183.58	169.19	+	1.90	+	10.56
004 Sorghum / Jowar	0.0214	290.73	279.91	226.29	+	3.87	+	28.48
005 Millet / Bajra	0.0374	216.39	239.29	169.85	-	9.57	+	27.40
006 Vegetables	1.2441	178.77	255.52	332.34	-	30.04	-	46.21
007 Fresh Fruits	1.5144	243.41	249.64	231.15	-	2.50	+	5.30
008 Dry Fruits	0.2478	280.01	275.15	258.63	+	1.77	+	8.27
009 Cotton Seeds	1.1511	263.02	265.86	255.91	-	1.07	+	2.78
010 Other Oil Seeds	0.0722	192.93	194.00	194.71	-	0.55	-	0.91
011 Edible Roots / Potatoes	0.2540	195.30	232.25	295.50	-	15.91	-	33.91
012 Stimulant & Spice Crops	0.1634	315.85	331.71	265.09	-	4.78	+	19.15
013 Pulses	0.4901	238.94	233.92	254.88	+	2.15	-	6.25
014 Sugar Crops	1.0725	265.16	257.62	257.62	+	2.93	+	2.93
015 Fibre Crops	5.3169	282.27	284.57	208.95	-	0.81	+	35.09
016 Unmanufactured Tobacco	0.0742	325.00	322.03	305.98	+	0.92	+	6.22
017 Poultry	0.5633	221.45	241.45	204.55	-	8.28	+	8.26
018 Raw Milk from Bovine Animals	7.0279	285.96	285.82	272.70	+	0.05	+	4.86
019 Eggs	0.5034	244.82	254.37	281.12	-	3.75	-	12.91
020 Raw Animal Materials / Wool	0.0351	190.00	180.75	173.34	+	5.12	+	9.61
021 Hides & Fur Skins, Raw	0.4834	92.91	92.92	104.78	-	0.01	-	11.33
022 Fuel Wood in Logs	0.0179	290.77	289.68	283.56	+	0.38	+	2.54
023 Fish Live Fresh or Chilled	1.7295	460.30	462.45	465.17	-	0.46	-	1.05
Ores/Minerals, Elec., Gas & W	12.0389	293.54	293.14	243.79	+	0.14	+	20.41
024 Coal not Agglomerated	0.7508	155.29	155.29	155.29	+	0.00	+	0.00
025 Natural Gas Liquified	5.7385	317.10	316.26	212.93	+	0.27	+	48.92
026 Salt & Pure Sodium Chloride	0.0584	275.23	275.23	257.14	+	0.00	+	7.04
027 Electrical Energy	5.4912	288.00	288.00	288.00	+	0.00	+	0.00
Food, Beverages, Tobacco, Textil	31.1122	251.73	249.98	227.93	+	0.70	+	10.44
Food Products, Beverages &	20.0718	256.60	255.75	238.68	+	0.33	+	7.51
028 Meat of Animals	3.4559	346.05	346.05	309.09	+	0.00	+	11.96
029 Vegetables & Fruit Juice	0.0058	228.62	228.62	226.05	+	0.00	+	1.14
030 Dried Fruits & Nuts	0.1733	310.79	306.71	291.10	+	1.33	+	6.76
031 Fruit Juices	0.3880	188.84	188.81	182.56	+	0.02	+	3.44
032 Vegetable Oils Refined	1.9242	161.33	161.51	154.77	-	0.11	+	4.24
033 Vegetable Ghee	1.5632	134.81	132.81	126.41	+	1.51	+	6.65
034 Oil Cakes	0.9611	244.38	244.02	228.61	+	0.15	+	6.90
035 Processed Liquid Milk	4.4437	296.92	296.92	286.83	+	0.00	+	3.52
036 Milk & Cream in Solid Form	0.0316	236.57	232.69	223.69	+	1.67	+	5.76
037 Ice Cream	0.0047	286.26	286.26	266.02	+	0.00	+	7.61
038 Dairy Products N.E.C	0.0117	291.79	290.96	266.50	+	0.29	+	9.49
039 Wheat Flour	2.3034	197.31	196.58	197.14	+	0.37	+	0.09
040 Other Cereal Flour	0.0604	219.15	220.56	219.79	-	0.64	-	0.29
041 Sugar Refined	1.7975	211.56	207.53	205.52	+	1.94	+	2.94
042 Chocolate	0.0139	100.00	100.00	100.00	+	0.00	+	0.00
043 Sugar Confectionary	0.0738	127.25	127.25	128.44	+	0.00	-	0.93
044 Coffee & Tea	0.7303	285.98	281.25	253.26	+	1.68	+	12.92
045 Spices	0.1449	226.87	222.28	202.03	+	2.06	+	12.30
046 Other Food Products	0.0336	309.34	308.63	294.50	+	0.23	+	5.04
047 Mineral Water	0.0207	207.20	207.20	208.14	+	0.00	-	0.45
048 Beverages	0.6303	176.55	176.55	172.85	+	0.00	+	2.14
049 Tobacco Products	1.2998	393.80	393.80	318.37	+	0.00	+	23.69
Textiles & Apparels	10.3289	242.51	238.88	209.26	+	1.52	+	15.89
050 Cotton Yarn	5.2491	260.77	256.44	204.94	+	1.69	+	27.24
051 Nylon Yarn	0.1719	143.99	143.99	143.99	+	0.00	+	0.00
052 Blended Yarn	0.1689	193.85	195.65	186.96	-	0.92	+	3.69
053 Woven Fabrics	0.0128	338.53	338.53	321.49	+	0.00	+	5.30
054 Cotton Fabrics	0.6343	223.20	221.14	212.00	+	0.93	+	5.28
055 Other Fabrics	1.1016	231.49	227.85	227.16	+	1.60	+	1.91
056 Silk & Reyon Fabrics	0.7350	194.26	188.81	188.14	+	2.89	+	3.25
057 Towels	0.1235	308.50	308.50	276.14	+	0.00	+	11.72

Annexure B: Wholesale Price Indices by Major Groups & Commodities (2007-08=100)

Item and Specification	Weight	Index Numbers			% Change in Dec 2018 over	
		Dec 18	Nov 18	Dec 17	Nov 2018	Dec 2017
058 Blankets	0.0029	277.52	273.59	265.03	+ 1.44	+ 4.71
059 Bed Sheets	0.0913	268.60	268.60	256.87	+ 0.00	+ 4.57
060 Quilts	0.0019	224.63	224.63	222.32	+ 0.00	+ 1.04
061 Woolen Carpets	0.0383	196.43	196.43	196.43	+ 0.00	+ 0.00
062 Synthetic Carpets	0.0566	131.80	131.80	130.95	+ 0.00	+ 0.65
063 Hosiery Products	0.8832	254.53	254.53	244.11	+ 0.00	+ 4.27
064 Readymade Garments	1.0576	218.58	213.16	201.37	+ 2.54	+ 8.55
Leather Products	0.7115	248.38	248.38	195.77	+ 0.00	+ 26.87
065 Leather Without Hair	0.2973	228.93	228.93	212.68	+ 0.00	+ 7.64
066 Other Leather N.E.C	0.2567	320.16	320.16	207.02	+ 0.00	+ <u>54.65</u>
067 Footwears	0.1575	168.09	168.09	145.51	+ 0.00	+ 15.52
Other Transportable Goods	22.3659	218.04	224.71	179.11	- 2.97	+ 21.74
068 Timber	0.0165	244.62	244.62	231.53	+ 0.00	+ 5.65
069 Printing Paper	0.4279	174.76	174.76	166.45	+ 0.00	+ 4.99
070 Hard Board	0.1579	291.67	291.67	225.00	+ 0.00	+ 29.63
071 Coke	0.2797	163.45	163.45	163.45	+ 0.00	+ 0.00
072 Motor Spirit	1.5336	161.88	165.26	130.85	- 2.05	+ 23.71
073 Diesel Oil	5.2664	237.44	247.11	172.21	- 3.91	+ 37.88
074 Kerosine Oil	0.2151	222.96	230.97	153.38	- 3.47	+ 45.36
075 Furnace Oil	3.2664	167.39	198.68	110.34	- 15.75	+ <u>51.70</u>
076 Mobil Oil	0.7114	211.03	211.03	200.62	+ 0.00	+ 5.19
077 Chemicals	1.7720	215.72	215.33	182.27	+ 0.18	+ 18.35
078 Dyeing Material	0.1539	150.72	150.72	146.55	+ 0.00	+ 2.85
079 Fertilizers	2.8657	260.32	257.79	223.94	+ 0.98	+ 16.25
080 Pesticides	0.2763	316.64	316.64	305.84	+ 0.00	+ 3.53
081 Insecticides	0.1276	147.58	147.06	137.12	+ 0.35	+ 7.63
082 Paints & Varnishes	0.1916	358.85	358.49	299.42	+ 0.10	+ 19.85
083 Medicines	1.1428	181.01	180.99	177.01	+ 0.01	+ 2.26
084 Soaps & Detergents	0.8168	199.52	198.71	191.76	+ 0.41	+ 4.05
085 Auto Tyres	0.2703	186.63	184.52	177.07	+ 1.14	+ 5.40
086 Plastic Products	0.4550	244.35	244.35	226.00	+ 0.00	+ 8.12
087 Glass sheets	0.2089	312.41	312.41	302.27	+ 0.00	+ 3.35
088 Other Glass Articles	0.1635	318.10	318.10	318.10	+ 0.00	+ 0.00
089 Ceramics & Sanitary Fixture	0.0244	246.05	246.05	234.59	+ 0.00	+ 4.89
090 Bricks, Blocks & Tiles	0.1566	232.45	233.23	223.47	- 0.33	+ 4.02
091 Cement	1.8145	240.25	239.43	212.17	+ 0.34	+ 13.23
092 Bed Foam	0.0006	182.50	182.50	171.50	+ 0.00	+ 6.41
093 Matches	0.0505	172.57	171.36	171.36	+ 0.71	+ 0.71
Metal Product, Machinery & Eq	8.7156	190.19	190.55	177.80	- 0.19	+ 6.97
094 Pig Iron	0.0593	128.97	128.97	128.97	+ 0.00	+ 0.00
095 Steel Bar & Sheets	1.4022	172.86	177.11	141.83	- 2.40	+ 21.88
096 Pipe Fittings	0.0780	238.51	238.51	215.66	+ 0.00	+ 10.60
097 Steel Products	0.3879	184.01	184.01	176.70	+ 0.00	+ 4.14
098 Engines & Motors	0.0046	116.98	116.98	116.98	+ 0.00	+ 0.00
099 Vacuum Pumps	0.0155	123.69	123.69	123.69	+ 0.00	+ 0.00
100 Air Conditioners	0.0049	211.33	211.33	200.10	+ 0.00	+ 5.61
101 Cultivators	0.0551	190.66	190.66	190.66	+ 0.00	+ 0.00
102 Chuff Cutter	0.1293	153.46	153.46	153.46	+ 0.00	+ 0.00
103 Tractors	0.0028	226.93	226.93	201.75	+ 0.00	+ 12.48
104 Lathe Machines	0.0525	299.21	268.38	241.06	+ 11.49	+ 24.12
105 Concrete Mixture	0.0107	138.83	138.83	138.83	+ 0.00	+ 0.00
106 Fridge, WashM, SewM, Fans, Iron	1.1645	238.82	238.82	216.72	+ 0.00	+ 10.20
107 Electric Wires	0.0912	208.22	208.22	205.92	+ 0.00	+ 1.12
108 Lighting Equipments	1.4431	174.13	174.04	170.98	+ 0.05	+ 1.84
109 Radio & Television	0.1843	140.42	140.42	140.42	+ 0.00	+ 0.00
110 Motor Vehicles	0.0244	223.94	223.94	195.36	+ 0.00	+ 14.63
111 Motorcycles	0.2570	138.37	134.21	126.05	+ 3.10	+ 9.77
112 Bicycles	3.3483	194.31	194.31	187.65	+ 0.00	+ 3.55

Annexure – C

CPI by Income Quintiles and Commodity Groups (2007-08=100) December, 2018 (% change with November, 2018) MoM

Income Quintiles	General	Food and non-alcoholic Beverages	Alcoholic Beverages, Tobacco	Clothing and footwear	Housing, water, Elec., Gas and other fuels	Furnishing and household equipment maintenance	Health	Transport	Communication	Recreation and culture	Education	Restaurants and hotels	Misc. goods and services
Combine	-0.41	-1.59	0.39	0.63	0.02	0.99	0.28	-0.67	0.00	0.08	0.32	1.07	1.39
Income Quintile 1	-0.69	-1.70	0.30	0.64	0.05	1.03	0.30	0.45	0.00	0.09	0.37	1.36	0.73
Income Quintile 2	-0.60	-1.65	0.31	0.62	0.02	1.00	0.30	0.25	0.00	0.09	0.37	1.29	0.75
Income Quintile 3	-0.55	-1.65	0.34	0.61	0.02	0.98	0.29	0.00	0.00	0.08	0.35	1.18	0.91
Income Quintile 4	-0.49	-1.67	0.36	0.61	0.01	0.96	0.28	-0.23	0.00	0.08	0.34	1.11	1.02
Income Quintile 5	-0.27	-1.48	0.45	0.63	0.02	1.00	0.27	-0.95	0.00	0.07	0.31	0.99	1.83

CPI by Income Quintiles and Commodity Groups (2007-08=100) December, 2018 (% change with December, 2017) YoY

Income Quintiles	General	Food and non-alcoholic Beverages	Alcoholic Beverages, Tobacco	Clothing and footwear	Housing, water, Elec., Gas and other fuels	Furnishing and household equipment maintenance	Health	Transport	Communication	Recreation and culture	Education	Restaurants and hotels	Misc. goods and services
Combine	6.17	0.05	14.26	7.73	9.08	8.35	8.48	18.21	7.83	8.52	10.37	5.63	8.97
Income Quintile 1	3.18	-1.04	12.97	7.93	5.87	9.08	8.15	21.56	3.77	6.57	10.63	4.59	6.97
Income Quintile 2	3.79	-0.60	13.05	7.84	6.08	9.02	8.31	19.76	4.22	6.69	10.59	4.76	7.06
Income Quintile 3	4.23	-0.38	13.57	7.78	5.98	8.95	8.35	18.80	5.00	7.01	10.46	5.11	7.54
Income Quintile 4	5.90	-0.12	14.36	7.71	10.22	8.84	8.39	18.16	6.46	7.57	10.34	5.46	7.90
Income Quintile 5	8.06	0.74	14.91	7.67	11.55	8.06	8.64	17.94	9.23	9.89	10.34	5.95	10.33