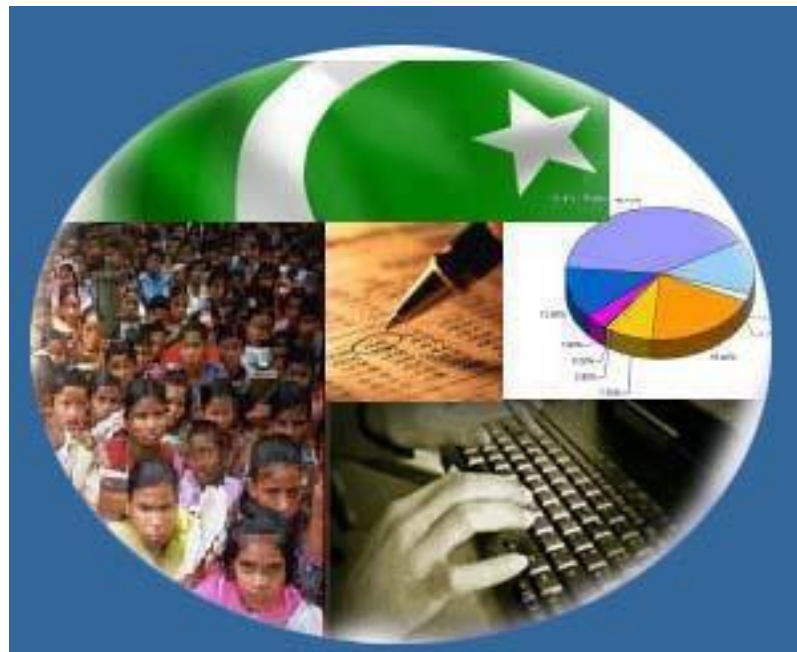




Monthly Review on Price Indices



June, 2019
(Base 2007-08)

Government of Pakistan
Ministry of Planning, Development and Reform
Pakistan Bureau of Statistics
Islamabad

Inflation in Brief

1. CPI inflation General increased by 8.9% on year-on-year basis in June, 2019 as compared to an increase of 9.1% in the previous month and 5.2% in June 2018. On month-on-month basis, it increased by 0.4% in June 2019 as compared to an increase of 0.8% in the previous month and an increase of 0.6% in corresponding month i.e. June 2018.
2. Core inflation measured by non-food non-energy CPI (Core NFNE) increased by 7.2% on (YoY) basis in June 2019 as compared to an increase of 7.2% in the previous month and 7.1% in June 2018. On (MoM) basis, it increased by 0.3% in June 2019 as compared to an increase of 0.4% in previous month, and an increase of 0.3% in corresponding month of last year i.e. June 2018.
3. Core inflation, measured by 20% weighted trimmed mean CPI (Core Trimmed) increased by 7.3% on (YoY) basis in June 2019 as compared to 7.5% in the previous month and by 5.4% in June 2018. On (MoM) basis, it increased by 0.4% in June 2019 as compared to an increase of 0.4% in the previous month and an increase of 0.2% in corresponding month of last year i.e. June 2018.
4. The CPI by Income Quintiles and Commodity Groups for June 2019 (MoM and YoY) is placed at **Annexure-C**.
5. SPI inflation on YoY basis increased by 10.6% in June 2019 as compared to an increase of 10.8% a month earlier and an increase of 1.9% in June 2018. On MoM basis, it increased by 1.6% as compared to an increase of 1.2% in the previous month and an increase of 1.8% in corresponding month of last year i.e. June 2018.
6. WPI inflation on YoY basis increased by 12.7% in June 2019 as compared to an increase of 14.0% a month earlier and an increase of 7.6% in June 2018. WPI inflation on MoM basis increased by 0.3% in June 2019 as compared to an increase of 1.4% a month earlier and an increase of 1.5% in corresponding month of last year i.e. June 2018.
7. Figures 1 and 2 show graphically the data of Table1. Table1.1 shows "Period Average" and "YoY" percent changes in indices of three years.

Table 1: Inflation (%) (Base 2007-08)

Period	CPI						Core Inflation				SPI**		WPI	
	General		Food		Non-food		NFNE*		Trimmed		YoY	MoM	YoY	MoM
	YoY	MoM	YoY	MoM	YoY	MoM	YoY	MoM	YoY	MoM				
May-18	4.2	0.5	1.0	1.0	6.4	0.2	7.0	0.2	5.1	0.3	0.5	0.1	5.6	1.3
Jun-18	5.2	0.6	3.0	0.8	6.7	0.4	7.1	0.3	5.4	0.2	1.9	1.8	7.6	1.5
Jul-18	5.8	0.9	3.5	0.6	7.4	1.2	7.6	1.2	5.9	0.9	3.6	1.2	10.5	2.4
Aug-18	5.8	0.2	3.3	0.2	7.6	0.2	7.7	0.2	5.9	0.2	3.3	0.2	11.0	0.8
Sep-18	5.1	-0.1	1.4	-0.7	7.7	0.3	8.0	0.4	5.8	0.1	1.0	-0.1	9.2	-1.5
Oct-18	6.8	2.3	2.7	1.9	9.6	2.6	8.2	1.1	6.7	0.8	1.3	1.1	13.1	4.2
Nov-18	6.5	0.1	1.8	-0.5	9.8	0.5	8.3	0.4	6.7	0.3	1.3	0.3	13.5	0.7
Dec-18	6.2	-0.4	0.9	-1.4	9.8	0.2	8.4	0.3	6.9	0.3	2.0	0.0	12.1	-0.9
Jan-18	7.2	1.0	2.4	0.3	10.5	1.4	8.7	1.1	7.7	1.0	3.7	0.6	9.9	-0.2
Feb-19	8.2	0.6	5.0	1.4	10.4	0.1	8.8	0.2	7.7	0.2	6.5	1.5	11.0	0.9
Mar-19	9.4	1.4	8.4	2.9	10.1	0.5	8.5	0.5	7.9	0.4	8.8	1.6	12.6	1.7
Apr-19	8.8	1.3	8.6	1.7	9.0	1.0	7.0	1.0	7.2	0.9	9.3	0.9	13.8	2.3
May-19	9.1	0.8	8.7	1.1	9.4	0.6	7.2	0.4	7.5	0.4	10.8	1.2	14.0	1.4
Jun-19	8.9	0.4	8.2	0.4	9.3	0.4	7.2	0.3	7.3	0.4	10.6	1.6	12.7	0.3

*NFNE is non-food non-energy, ** SPI for quintile 1. Digits 0.0* are due to rounding off.

Table 1.1: Period Average and YoY % Changes of Indices (Base 2007-08)

Index	Average July- June % changes			May over June % changes		
	2018-19	2017-18	2016-17	2019	2018	2017
CPI	7.34	3.92	4.16	8.89	5.21	3.93
SPI	5.15	0.88	1.57	10.65	1.92	1.38
WPI	11.97	3.47	4.04	12.69	7.64	3.27

Figure 1: CPI Inflation YoY, Special Indices

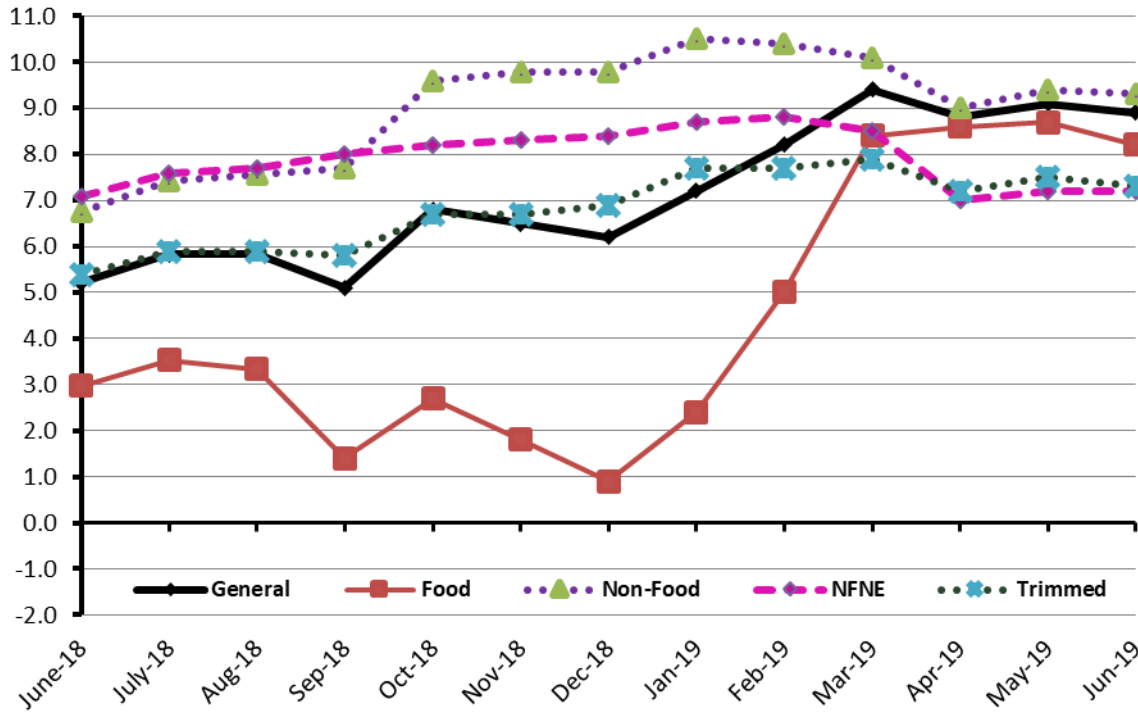
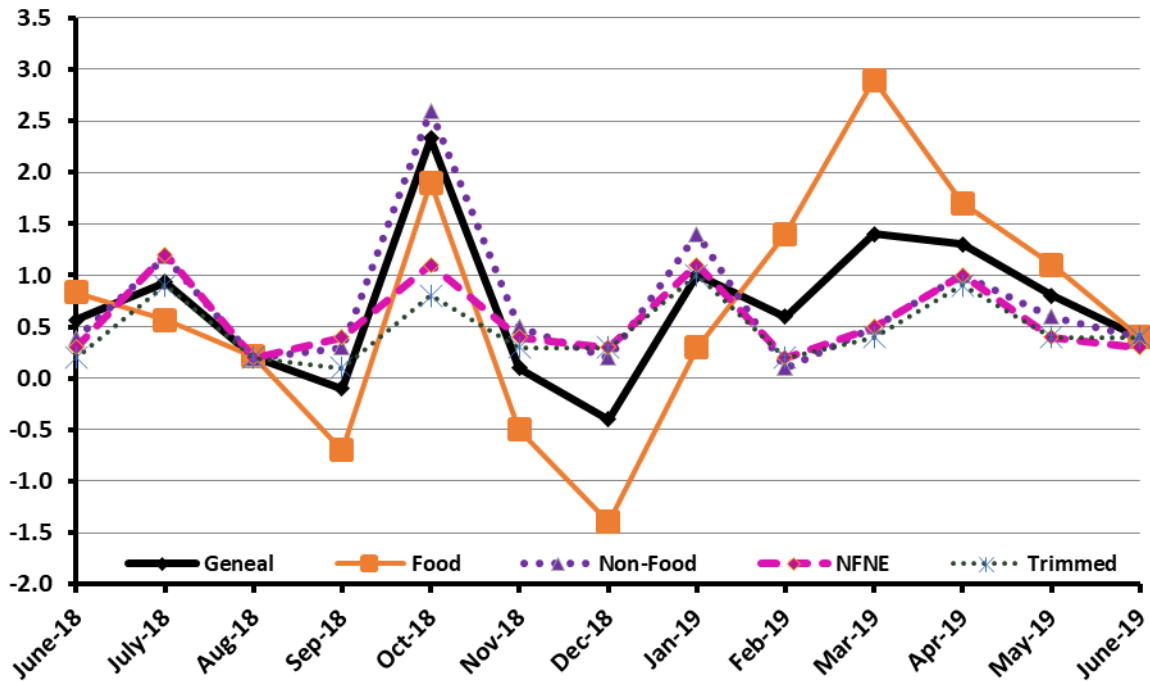


Figure 2: CPI Inflation MoM, Special Indices



I. Consumer Price Index (CPI)

The Consumer Price Index of June 2019 is increased by 0.36% over May 2019 and increased by 8.89% over corresponding month of the last year i.e. June 2018.

Table 2: Consumer Price Index by Group of Commodities and Services (Base 2007-08)

No	Group	Group Weight (%)	Indices			% Change June 2019 Over		Impact (In % points) June 2019 Over	
			June 2019	May 2019	June 2018	May 2019	June 2018	May 2019	June 2018
	General	100.00	246.82	245.94	226.67	0.36	8.89	0.36	8.89
1.	Food & Non-alcoholic Beverages	34.83	254.35	254.52	236.56	-0.07	7.52	-0.02	2.73
	<i>Non-perishable Food Items</i>	29.84	250.43	247.94	234.57	1.00	6.76	0.30	2.09
	<i>Perishable Food Items</i>	4.99	277.82	293.83	248.50	-5.45	11.80	-0.32	0.65
2.	Alcoholic Bev. & Tobacco	1.41	384.12	357.39	314.62	7.48	22.09	0.15	0.43
3.	Clothing & Footwear	7.57	269.25	268.97	253.51	0.10	6.21	0.01	0.53
4.	Housing, Water, Electricity, Gas & Fuels	29.41	228.37	228.25	207.63	0.05	9.99	0.01	2.69
5.	Furnishing & Household Equipment Maint.	4.21	262.78	260.94	240.50	0.71	9.26	0.03	0.41
6.	Health	2.19	243.64	243.20	224.35	0.18	8.60	0.00	0.19
7.	Transport	7.20	223.75	220.70	194.64	1.38	14.96	0.09	0.93
8.	Communication	3.22	145.40	143.78	133.61	1.13	8.82	0.02	0.17
9.	Recreation & Culture	2.02	223.20	223.09	208.37	0.05	7.12	0.00	0.13
10.	Education	3.94	297.26	297.26	281.89	0.00	5.45	0.00	0.27
11.	Restaurants & Hotels	1.23	311.96	309.78	292.90	0.70	6.51	0.01	0.10
12.	Miscellaneous	2.76	289.66	285.38	264.25	1.50	9.62	0.05	0.31

Main contributors to month-on-month and year-on-year percentage changes are given below and detail is given in Annexure A.

1. Month-on-month Top few commodities which varied from previous month i.e. May 2019 are given below:

Food Increased: Potatoes (17.28%), Cigarettes (7.75%), Sugar (6.16%), Pulse Moong (5.05%), Gur (4.25%), Pulse Mash (3.69%), Onions (2.95%), Wheat Flour (2.21%), Wheat(2.15%), Bakery and Confectionary (1.88%), Eggs (1.57%), Pulse Masoor (1.33%), Milk Fresh (1.05%), Meet (1.02%), Vegetable Ghee (1.01%), Besan (0.75%) and Rice(0.35%).

Decreased: Fresh fruit (12.33%), Tomatoes (9.20%), Chicken (5.22%), Fresh Vegetables (2.65%), Fish (1.40%), Beans (0.91%) and Dry Fruits (0.06%).

Non-food Increased: Motor Fuel (3.41%), Personal Equipments (2.66%), Construction Input Items (1.57%), Household Servant (1.40%), Kerosene Oil (0.90%), Cosmetics (0.56%) and Construction Wage Rates (0.52%).

Decreased: Cotton Cloth (0.03%),

Year-on-Year: Top few commodities which varied from previous year i.e. June, 2018 are given below:-

Food Increased: Onions (72.13%), Pulse Moong (42.67%), Sugar (33.50%), Gur (27.85%), Cigarettes (23.64%), Fresh Vegetables (18.05%), Spices (16.59%), Pulse Mash (Washed) (16.39%), Potatoes (13.36%), Meat (12.77%), Pulse Gram (12.47%), Beans (10.67%), Pulse Masoor (9.18%), Wheat (8.79%), Vegetable Ghee (8.08%), Cooking Oil (7.73%), Rice (6.17%), Besan (5.55%) and Milk Fresh (4.48%).

Decreased: Chicken (12.07%), Tomatoes (6.36%), Eggs (5.59%), Gram Whole (3.87%) and Fresh Fruit (0.91%).

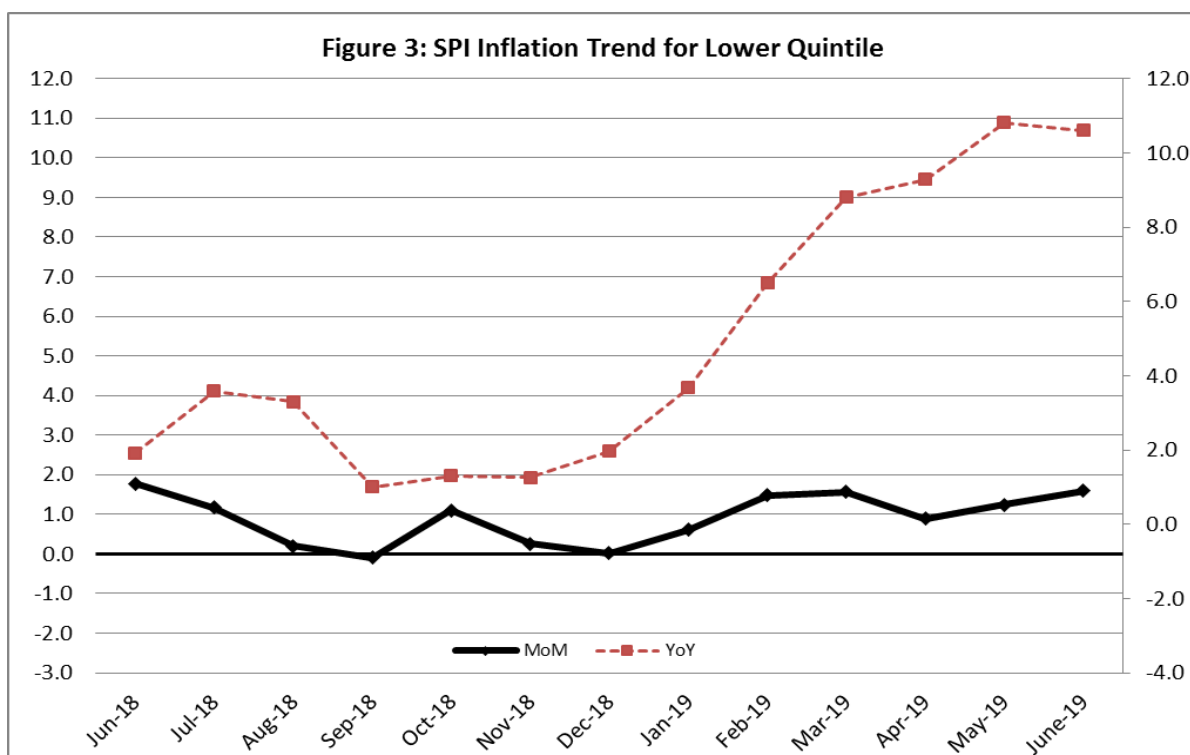
Non-food Increased: Gas (85.31%), Motor Fuel (24.90%), Motor Vehicles (12.73%), Motor Vehicle Accessories (11.44%), Construction Input Items (11.20%), Kerosene Oil (10.60%), Household Servant (10.16%), Cosmetics (8.95%), Transport Services (8.92%), Construction Wage Rates (6.98%) and House Rent (6.35%).

II. Sensitive Price Indicator

Quintile-wise percentage changes YoY and MoM are given below in Table 3. The series from June 2018 to June 2019 is also graphed below in Figure 3.

Table 3: Sensitive Price Indicator (Base 2007-08)					
Quintiles	Indices			% Change June, 2019 over	
	June, 2019	May, 2019	June, 2018	May, 2019	June, 2018
1	236.50	232.70	213.74	1.63	10.65
2	245.92	242.41	223.04	1.45	10.26
3	247.85	244.41	225.46	1.41	9.93
4	262.69	259.24	231.26	1.33	13.59
5	270.12	266.47	231.08	1.37	16.89
Combined	257.34	253.78	228.00	1.40	12.87

Table 3.1 : Weekly Percentage Change of SPI During June, 2019				
Quintiles	% Change with Previous week			
	03.06.2019	13.06.2019	20.06.2019	27.06.2019
Quintile 1	0.69	0.59	-0.08	0.11
Combined	0.68	0.31	-0.09	0.03



iii. Wholesale Price Index

The Wholesale Price Index for June, 2019 increased by 0.33% over May, 2019. It increased by 12.69% over the corresponding month of the last year. YoY and MoM movements, from June, 2018 to June, 2019 are also graphed below in Figure 4.

Table 4: Wholesale Price Index by Group of Commodities (Base 2007-08)									
No.	Group	Group Weight (%)	Indices			% Change June, 2019 over		Impact (in %age points) June, 2019 over	
			June, 2019	May, 2019	June, 2018	May, 2019	June, 2018	May, 2019	June, 2018
	General	100.00	264.15	263.29	234.40	0.33	12.69	0.33	12.69
1.	Agriculture, Forestry & Fishery Products	25.77	294.06	294.65	266.18	-0.20	10.47	-0.06	3.07
2.	Ores & Minerals, Electricity, Gas & Water	12.04	290.44	290.68	243.23	-0.08	19.41	-0.01	2.42
3.	Food Products, Beverages & Tobacco, Textiles, Apparel & Leather Products	31.11	270.14	268.16	238.47	0.74	13.28	0.23	4.20
	i. Food Products, Bev. & Tobacco	20.07	271.77	268.41	243.87	1.25	11.44	0.26	2.39
	ii. Textiles and Apparel	10.33	260.04	260.61	230.57	-0.22	12.78	-0.02	1.30
	iii. Leather Products	0.71	370.84	370.84	200.77	0.00	84.71	0.00	0.52
4.	Other Transportable Goods except Metal Products, Machinery & Equipment	22.37	233.95	232.38	206.51	0.68	13.29	0.13	2.62
5.	Metal Products, Machinery & Equipment	8.72	195.49	194.68	185.32	0.42	5.49	0.03	0.38

Main contributors to month-on-month and year-on-year percentage changes are given below and detail is given in Annexure B.

1. **Month-on-month** Top few commodities which varied from previous month i.e. May, 2019 are given below:-

Increased: Potatoes (19.45%), Stimulant & Spice Crops (6.37%), Vegetables (6.28%), Sugar (5.84%), Auto Tyres (5.26%), Wheat Flour (4.48%), Petrol (3.94%), Cotton Seeds (3.71%), Other Oil Seeds (3.49%), Maize (3.38%), Mobil Oil (3.11%), Bajra (2.96%), Wheat (2.93%), Diesel Oil (2.82%), Steel Bar & Sheets (2.76%), Oil Cakes (2.26%), Pulses (1.97%), Kerosene Oil (1.75%), Eggs (1.36%), Other Fabrics (1.23%), Dyeing Material (1.11%), Fertilizers (1.02%) and Blended Yarn (1.00%).

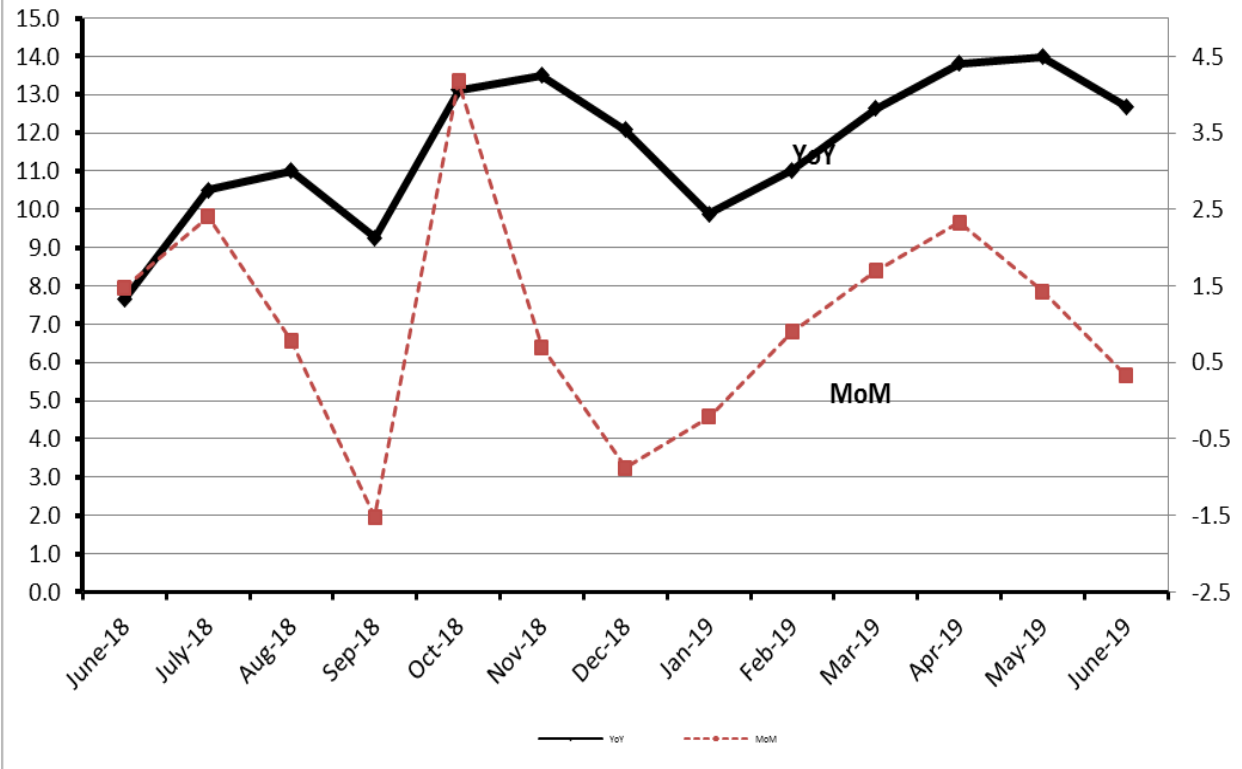
Decreased: Fresh Fruits (10.80%), Poultry (9.92%), Furnace Oil (5.26%), Rice (1.27%) and Dry Fruits (1.14%).

2. **Year-on-year** Top few commodities which varied from previous year i.e. June, 2018 are given below:-

Increased: Other Leather N.E.C (218.26%), Jowar (59.52%), Natural Gas Liquefied (48.56%), Vegetables (36.97%), Sugar (36.88%), Sugar Crops (35.74%), Bajra (26.67%), Spices (24.66%), Lathe Machine (24.12%), Maize (23.70%), Tobacco Products (23.69%), Potatoes (23.18%), Petrol (22.55%), Paints & Varnishes (22.31%), Auto Tyres (21.43%), Motorcycle (19.91%), Stimulant & Spice Crops (19.35%), Diesel (19.31%), Cotton Yarn (18.20%), Kerosene Oil (16.94%), Fertilizers (16.81%), Pipe Fittings (16.59%), Fibre Crops (16.41%), Chemicals (16.34%).

Decreased: Poultry (15.18%), Eggs (14.74%), Hides & Fur Skin (2.06%), Electrical Energy (1.42%) and Dry Fruits (1.13%).

Figure 4: WPI Inflation



Annexure – A: CPI by Commodity Groups and Commodities (2007-08=100)

Item and Specification	Weight	Index Numbers			% Change in June 2019 over			
		June 2019	May 2019	June 2018	May 2019	June 2018		
<i>General</i>	100.00	246.82	245.94	226.67	+	0.36	+	8.89
<i>Food and non-alcoholic Beverages</i>	34.834	254.36	254.52	236.56	-	0.06	+	7.52
1 Wheat	0.3477	211.05	206.61	194.00	+	2.15	+	8.79
2 Wheat Flour	4.1648	222.06	217.25	208.16	+	2.21	+	6.68
3 Wheat Product	0.0959	218.70	216.71	212.75	+	0.92	+	2.80
4 Besan	0.1500	275.43	273.41	260.94	+	0.74	+	5.55
5 Rice	1.5821	205.70	204.99	193.75	+	0.35	+	6.17
6 Cereals	0.1563	273.24	272.73	263.90	+	0.19	+	3.54
7 Bakery & Confectionary	1.1550	239.53	235.10	226.64	+	1.88	+	5.69
8 Nimco	0.4574	264.99	264.45	259.97	+	0.20	+	1.93
9 Meat	2.4303	343.29	339.83	304.41	+	1.02	+	12.77
10 Chicken	1.3596	202.46	213.60	230.25	-	5.22	-	12.07
11 Fish	0.2970	240.70	244.13	228.77	-	1.40	+	5.21
12 Milk Fresh	6.6800	296.50	293.43	283.79	+	1.05	+	4.48
13 Milk Products	0.6338	288.08	287.09	275.29	+	0.34	+	4.65
14 Milk Powder	0.1129	261.52	259.46	244.05	+	0.79	+	7.16
15 Eggs	0.4555	172.61	169.95	182.83	+	1.57	-	5.59
16 Mustard Oil	0.0952	171.66	170.41	163.47	+	0.73	+	5.01
17 Cooking Oil	1.7538	151.69	151.39	140.80	+	0.20	+	7.73
18 Vegetable Ghee	2.0714	158.05	156.47	146.24	+	1.01	+	8.08
19 Dry Fruits	0.2543	313.70	313.89	291.36	-	0.06	+	7.67
20 Fresh Fruits	1.8649	311.78	355.63	314.64	-	12.3	-	0.91
21 Pulse Masoor	0.2712	169.78	167.55	155.50	+	1.33	+	9.18
22 Pulse Moong	0.2336	305.38	290.70	214.05	+	5.05	+	42.67
23 Pulse Mash (Washed)	0.2098	241.63	233.03	207.61	+	3.69	+	16.39
24 Pulse Gram	0.2361	285.29	285.07	253.65	+	0.08	+	12.47
25 Gram Whole	0.1616	260.01	259.79	270.48	+	0.08	-	3.87
26 Beans	0.0269	270.65	273.13	244.55	-	0.91	+	10.67
27 Potatoes	0.4452	211.51	180.34	186.58	+	17.2	+	13.36
28 Onion	0.5093	324.85	315.54	188.72	+	2.95	+	<u>72.13</u>
29 Tomatoes	0.4172	144.53	159.18	154.34	-	9.20	-	6.36
30 Fresh Vegetables	1.7543	278.79	286.39	236.17	-	2.65	+	18.05
31 Sugar	1.0445	255.67	240.83	191.51	+	6.16	+	33.50
32 Gur	0.0220	312.32	299.59	244.30	+	4.25	+	27.84
33 Honey	0.0446	406.02	403.00	346.18	+	0.75	+	17.29
34 Sweet Meat	0.2483	285.90	283.12	270.86	+	0.98	+	5.55
35 Beverages	1.1990	240.22	239.05	232.53	+	0.49	+	3.31
36 Jam, Tomato Ketchup & Pickles	0.2454	244.42	243.64	230.49	+	0.32	+	6.04
37 Condiments	0.2656	304.45	300.66	284.91	+	1.26	+	6.86
38 Spices	0.5441	291.97	289.38	250.42	+	0.90	+	16.59
39 Tea	0.8377	322.11	321.62	304.69	+	0.15	+	5.72
<i>Alcoholic Beverages, Tobacco</i>	1.4135	384.13	357.39	314.62	+	7.48	+	22.09
40 Cigarettes	1.3906	380.62	353.23	307.85	+	7.75	+	23.64
41 Betel Leaves & Nuts	0.0229	597.21	610.05	725.90	-	2.10	-	17.73
<i>Clothing and footwear</i>	7.5708	269.25	268.98	253.51	+	0.10	+	6.21
42 Cotton Cloth	1.7286	270.26	270.34	245.84	-	0.03	+	9.93
43 Woolen Cloth	0.8759	285.01	285.01	265.97	+	0.00	+	7.16
44 Readymade Garments	0.9739	275.79	275.68	263.47	+	0.04	+	4.68
45 Woolen Readymade Garments	0.3964	289.87	289.77	266.61	+	0.03	+	8.72
46 Hosiery	0.5094	281.81	281.08	265.52	+	0.26	+	6.14

Annexure A: CPI by Commodity Groups and Commodities (2007-08=100)

Item and Specification	Weight	Index Numbers			% Change in June 2019 over		
		Jun 2019	May 2019	Jun 2018	May 2019	Jun 2018	
47 Dopatta	0.4412	282.02	281.95	262.16	+	0.02	+ 7.58
48 Cleaning and Laundry	0.2110	310.23	307.61	290.46	+	0.85	+ 6.81
49 Tailoring	0.8840	365.95	364.75	348.45	+	0.33	+ 5.02
50 Footwear	1.5504	181.38	181.34	179.84	+	0.02	+ 0.86
<u>Housing, water, Elec., Gas and other</u>	29.4149	228.37	228.25	207.63	+	0.05	+ 9.99
51 House Rent	21.8149	214.78	214.78	201.96	+	0.00	+ 6.35
52 Construction Input Items	0.5623	303.00	298.32	272.48	+	1.57	+ 11.20
53 Construction Wage Rates	0.3331	284.21	282.74	265.67	+	0.52	+ 6.98
54 Water Supply	0.4971	195.63	195.29	189.09	+	0.17	+ 3.46
55 Electricity	4.3985	258.28	258.28	238.10	+	0.00	+ 8.48
56 Gas	1.5756	292.94	292.94	158.08	+	0.00	+ <u>85.31</u>
57 Kerosene Oil	0.0057	298.12	295.47	269.54	+	0.90	+ 10.60
58 Firewood Whole	0.2277	309.64	308.96	298.03	+	0.22	+ 3.90
<u>Furnishing and household equip-</u>	4.2082	262.78	260.95	240.51	+	0.70	+ 9.26
59 Furniture	0.3315	257.55	256.83	235.86	+	0.28	+ 9.20
60 Household Textiles	0.6489	256.30	255.72	242.51	+	0.23	+ 5.69
61 Household Equipment	0.5936	205.81	205.33	190.12	+	0.23	+ 8.25
62 Utensils	0.3212	278.60	277.60	251.00	+	0.36	+ 11.00
63 Plastic Products	0.2547	250.68	250.05	225.46	+	0.25	+ 11.19
64 Washing Soaps & Detergents	0.7893	265.35	264.00	240.20	+	0.51	+ 10.47
65 Sewing Needle & Dr Cell	0.1496	238.85	232.84	219.11	+	2.58	+ 9.01
66 Household Servant	1.0432	299.18	295.04	271.59	+	1.40	+ 10.16
67 Marriage Hall Charges	0.0762	280.41	279.97	261.86	+	0.16	+ 7.08
<u>Health</u>	2.1868	243.63	243.18	224.36	+	0.19	+ 8.59
68 Drugs & Medicines	1.2667	209.38	208.87	189.52	+	0.24	+ 10.48
69 Medical Equipments	0.0080	283.19	283.11	260.09	+	0.03	+ 8.88
70 Doctor (MBBS) Clinic Fee	0.5904	324.35	324.35	304.41	+	0.00	+ 6.55
71 Medical Tests	0.3217	229.39	228.31	213.70	+	0.47	+ 7.34
<u>Transport</u>	7.2023	223.75	220.70	194.64	+	1.38	+ 14.96
72 Motor Vehicles	0.6630	211.41	211.31	187.53	+	0.05	+ 12.73
73 Motor Vehicle Accessories	0.2439	241.01	240.79	216.26	+	0.09	+ 11.44
74 Motor Fuel	3.0269	216.36	209.23	173.22	+	3.41	+ 24.90
75 Mechanical Service	0.4552	258.72	258.15	244.37	+	0.22	+ 5.87
76 Motor Vehicle Tax	0.1099	211.97	211.97	210.18	+	0.00	+ 0.85
77 Transport Services	2.7034	228.09	228.09	209.41	+	0.00	+ 8.92
<u>Communication</u>	3.2198	145.39	143.78	133.61	+	1.12	+ 8.82
78 Postal Services	0.0662	347.68	272.63	272.45	+	27.5	+ 27.61
79 Communication & Apparatus	3.1536	141.14	141.07	130.70	+	0.05	+ 7.99
<u>Recreation and culture</u>	2.0227	223.19	223.08	208.37	+	0.05	+ 7.11
80 Recreation & Culture	0.8634	138.17	138.17	134.21	+	0.00	+ 2.95
81 Text Books	0.5706	323.14	322.93	304.43	+	0.07	+ 6.15
82 Newspapers	0.1934	242.78	242.78	202.94	+	0.00	+ 19.63
83 Stationery	0.3953	255.05	254.76	234.35	+	0.11	+ 8.83
<u>Education</u>	3.9431	297.27	297.27	281.89	+	0.00	+ 5.46
84 Education	3.9431	297.27	297.27	281.89	+	0.00	+ 5.46
<u>Restaurants and hotels</u>	1.2286	311.97	309.79	292.90	+	0.70	+ 6.51
85 Readymade Food	1.2286	311.97	309.79	292.90	+	0.70	+ 6.51
<u>Misc. goods and services</u>	2.7550	289.65	285.37	264.25	+	1.50	+ 9.61
86 Personal Care	1.4935	254.78	252.77	239.22	+	0.80	+ 6.50
87 Cosmetics	0.3853	242.50	241.15	222.58	+	0.56	+ 8.95
88 Blades	0.0322	227.91	226.31	204.05	+	0.71	+ 11.69
89 Personal Equipments	0.8440	375.22	365.51	329.88	+	2.66	+ 13.74

Annexure B: Wholesale Price Indices by Major Groups & Commodities

(2007-08=100)

Item and Specification	Weight	Index Numbers			% Change in June 2019 over			
		Jun 19	May 19	Jun 18	May 2019	Jun 2018		
General	100.0000	264.15	263.29	234.40	+	0.33	+	12.69
Agriculture Forestry & Fisher	25.7674	294.06	294.65	266.18	-	0.20	+	10.47
001 Wheat	0.6297	219.21	212.97	197.00	+	2.93	+	11.27
002 Maize	0.6764	259.45	250.97	209.74	+	3.38	+	23.70
003 Rice	2.4413	203.44	206.06	178.97	-	1.27	+	13.67
004 Sorghum / Jowar	0.0214	462.53	465.05	289.95	-	0.54	+	<u>59.52</u>
005 Millet / Bajra	0.0374	274.51	266.63	216.72	+	2.96	+	26.67
006 Vegetables	1.2441	340.61	320.49	248.68	+	6.28	+	36.97
007 Fresh Fruits	1.5144	382.45	428.74	375.03	-	10.80	+	1.98
008 Dry Fruits	0.2478	284.02	287.30	287.26	-	1.14	-	1.13
009 Cotton Seeds	1.1511	291.62	281.20	267.32	+	3.71	+	9.09
010 Other Oil Seeds	0.0722	196.07	189.46	189.36	+	3.49	+	3.54
011 Edible Roots / Potatoes	0.2540	220.14	184.30	178.71	+	19.45	+	23.18
012 Stimulant & Spice Crops	0.1634	366.45	344.50	307.03	+	6.37	+	19.35
013 Pulses	0.4901	259.03	254.02	238.72	+	1.97	+	8.51
014 Sugar Crops	1.0725	349.69	349.69	257.62	+	0.00	+	35.74
015 Fibre Crops	5.3169	283.29	280.99	243.36	+	0.82	+	16.41
016 Unmanufactured Tobacco	0.0742	327.11	326.11	309.38	+	0.31	+	5.73
017 Poultry	0.5633	213.02	236.49	251.13	-	9.92	-	15.18
018 Raw Milk from Bovine Animals	7.0279	290.78	290.78	283.49	+	0.00	+	2.57
019 Eggs	0.5034	160.46	158.30	188.20	+	1.36	-	14.74
020 Raw Animal Materials / Wool	0.0351	190.05	190.05	176.84	+	0.00	+	7.47
021 Hides & Fur Skins, Raw	0.4834	93.04	93.37	95.00	-	0.35	-	2.06
022 Fuel Wood in Logs	0.0179	296.01	296.01	283.56	+	0.00	+	4.39
023 Fish Live Fresh or Chilled	1.7295	505.44	505.63	451.10	-	0.04	+	12.05
Ores/Minerals, Elec., Gas & W	12.0389	290.44	290.68	243.23	-	0.08	+	19.41
024 Coal not Agglomerated	0.7508	155.29	155.29	155.29	+	0.00	+	0.00
025 Natural Gas Liquefied	5.7385	314.37	314.87	211.61	-	0.16	+	48.56
026 Salt & Pure Sodium Chloride	0.0584	290.99	290.99	269.74	+	0.00	+	7.88
027 Electrical Energy	5.4912	283.90	283.90	288.00	+	0.00	-	1.42
Food, Beverages, Tobacco, Textil	31.1122	270.14	268.16	238.47	+	0.74	+	13.28
Food Products, Beverages &	20.0718	271.77	268.41	243.87	+	1.25	+	11.44
028 Meat of Animals	3.4559	363.58	360.72	331.21	+	0.79	+	9.77
029 Vegetables & Fruit Juice	0.0058	242.67	242.67	226.66	+	0.00	+	7.06
030 Dried Fruits & Nuts	0.1733	336.68	336.68	296.19	+	0.00	+	13.67
031 Fruit Juices	0.3880	197.32	196.95	185.75	+	0.19	+	6.23
032 Vegetable Oils Refined	1.9242	169.21	168.00	158.88	+	0.72	+	6.50
033 Vegetable Ghee	1.5632	140.14	139.59	129.89	+	0.39	+	7.89
034 Oil Cakes	0.9611	257.49	251.81	236.30	+	2.26	+	8.97
035 Processed Liquid Milk	4.4437	308.71	308.71	289.96	+	0.00	+	6.47
036 Milk & Cream in Solid Form	0.0316	242.99	242.85	223.82	+	0.06	+	8.56
037 Ice Cream	0.0047	287.85	287.85	266.02	+	0.00	+	8.21
038 Dairy Products N.E.C	0.0117	305.97	304.88	279.94	+	0.36	+	9.30
039 Wheat Flour	2.3034	206.75	197.89	189.88	+	4.48	+	8.88
040 Other Cereal Flour	0.0604	230.55	230.34	215.32	+	0.09	+	7.07
041 Sugar Refined	1.7975	274.66	259.51	200.66	+	5.84	+	36.88
042 Chocolate	0.0139	100.00	100.00	100.00	+	0.00	+	0.00
043 Sugar Confectionary	0.0738	128.15	128.15	127.55	+	0.00	+	0.47
044 Coffee & Tea	0.7303	293.65	292.34	275.43	+	0.45	+	6.62
045 Spices	0.1449	252.13	252.03	202.25	+	0.04	+	24.66
046 Other Food Products	0.0336	320.27	320.27	294.50	+	0.00	+	8.75
047 Mineral Water	0.0207	217.45	217.45	211.50	+	0.00	+	2.81
048 Beverages	0.6303	178.90	178.58	173.22	+	0.18	+	3.28
049 Tobacco Products	1.2998	393.80	393.80	318.37	+	0.00	+	23.69
Textiles & Apparels	10.3289	260.04	260.61	230.57	-	0.22	+	12.78
050 Cotton Yarn	5.2491	287.06	288.89	242.86	-	0.63	+	18.20
051 Nylon Yarn	0.1719	143.99	143.99	143.99	+	0.00	+	0.00
052 Blended Yarn	0.1689	209.91	207.84	196.66	+	1.00	+	6.74
053 Woven Fabrics	0.0128	344.94	344.94	321.49	+	0.00	+	7.29
054 Cotton Fabrics	0.6343	229.31	229.16	220.18	+	0.07	+	4.15
055 Other Fabrics	1.1016	238.78	235.88	227.85	+	1.23	+	4.80
056 Silk & Reyon Fabrics	0.7350	195.54	195.54	189.05	+	0.00	+	3.43
057 Towels	0.1235	308.50	308.50	305.52	+	0.00	+	0.98

Annexure B: Wholesale Price Indices by Major Groups & Commodities

(2007-08=100)

Item and Specification	Weight	Index Numbers			% Change in June 2019 over	
		Jun 19	May 19	Jun 18	May 2019	Jun 2018
058 Blankets	0.0029	277.52	277.52	265.03	+ 0.00	+ 4.71
059 Bed Sheets	0.0913	269.00	269.00	256.87	+ 0.00	+ 4.72
060 Quilts	0.0019	232.74	232.74	222.32	+ 0.00	+ 4.69
061 Woolen Carpets	0.0383	199.40	199.40	196.43	+ 0.00	+ 1.51
062 Synthetic Carpets	0.0566	134.75	134.75	130.95	+ 0.00	+ 2.90
063 Hosiery Products	0.8832	273.87	273.87	250.36	+ 0.00	+ 9.39
064 Readymade Garments	1.0576	228.07	228.07	204.85	+ 0.00	+ 11.34
Leather Products	0.7115	370.84	370.84	200.77	+ 0.00	+ 84.71
065 Leather Without Hair	0.2973	229.55	229.55	212.68	+ 0.00	+ 7.93
066 Other Leather N.E.C	0.2567	658.87	658.87	207.02	+ 0.00	+ <u>218.26</u>
067 Footwears	0.1575	168.09	168.09	168.09	+ 0.00	+ 0.00
Other Transportable Goods	22.3659	233.95	232.38	206.51	+ 0.68	+ 13.29
068 Timber	0.0165	245.35	245.35	237.00	+ 0.00	+ 3.52
069 Printing Paper	0.4279	174.76	174.76	171.07	+ 0.00	+ 2.16
070 Hard Board	0.1579	291.67	291.67	260.42	+ 0.00	+ 12.00
071 Coke	0.2797	163.45	163.45	163.45	+ 0.00	+ 0.00
072 Motor Spirit	1.5336	190.37	183.16	155.34	+ 3.94	+ 22.55
073 Diesel Oil	5.2664	271.61	264.15	227.66	+ 2.82	+ 19.31
074 Kerosine Oil	0.2151	262.91	258.40	224.83	+ 1.75	+ 16.94
075 Furnace Oil	3.2664	179.02	188.96	162.84	- 5.26	+ 9.94
076 Mobil Oil	0.7114	231.13	224.15	203.46	+ 3.11	+ 13.60
077 Chemicals	1.7720	222.97	222.74	191.65	+ 0.10	+ 16.34
078 Dyeing Material	0.1539	157.67	155.94	150.72	+ 1.11	+ 4.61
079 Fertilizers	2.8657	271.33	268.58	232.29	+ 1.02	+ 16.81
080 Pesticides	0.2763	325.17	325.17	312.26	+ 0.00	+ 4.13
081 Insecticides	0.1276	151.50	150.13	142.29	+ 0.91	+ 6.47
082 Paints & Varnishes	0.1916	372.88	369.27	304.87	+ 0.98	+ 22.31
083 Medicines	1.1428	196.13	196.13	177.06	+ 0.00	+ 10.77
084 Soaps & Detergents	0.8168	202.35	202.35	190.80	+ 0.00	+ 6.05
085 Auto Tyres	0.2703	215.10	204.36	177.14	+ 5.26	+ 21.43
086 Plastic Products	0.4550	246.72	246.72	240.04	+ 0.00	+ 2.78
087 Glass sheets	0.2089	337.30	337.30	302.27	+ 0.00	+ 11.59
088 Other Glass Articles	0.1635	331.31	331.31	318.10	+ 0.00	+ 4.15
089 Ceramics & Sanitary Fixture	0.0244	252.16	252.16	236.41	+ 0.00	+ 6.66
090 Bricks, Blocks & Tiles	0.1566	228.70	227.67	222.34	+ 0.45	+ 2.86
091 Cement	1.8145	232.09	232.74	232.31	- 0.28	- 0.09
092 Bed Foam	0.0006	181.83	181.83	175.33	+ 0.00	+ 3.71
093 Matches	0.0505	172.57	172.57	171.36	+ 0.00	+ 0.71
Metal Product, Machinery & Eq	8.7156	195.49	194.68	185.32	+ 0.42	+ 5.49
094 Pig Iron	0.0593	128.97	128.97	128.97	+ 0.00	+ 0.00
095 Steel Bar & Sheets	1.4022	185.63	180.64	164.94	+ 2.76	+ 12.54
096 Pipe Fittings	0.0780	251.44	251.44	215.66	+ 0.00	+ 16.59
097 Steel Products	0.3879	189.42	189.42	177.24	+ 0.00	+ 6.87
098 Engines & Motors	0.0046	116.98	116.98	116.98	+ 0.00	+ 0.00
099 Vacuum Pumps	0.0155	123.69	123.69	123.69	+ 0.00	+ 0.00
100 Air Conditioners	0.0049	218.02	218.02	203.80	+ 0.00	+ 6.98
101 Cultivators	0.0551	190.66	190.66	190.66	+ 0.00	+ 0.00
102 Chuff Cutter	0.1293	153.46	153.46	153.46	+ 0.00	+ 0.00
103 Tractors	0.0028	226.93	226.93	216.82	+ 0.00	+ 4.66
104 Lathe Machines	0.0525	299.21	299.21	241.06	+ 0.00	+ 24.12
105 Concrete Mixture	0.0107	138.83	138.83	138.83	+ 0.00	+ 0.00
106 Fridge,WashM,SewM,Fans,Iron	1.1645	251.78	251.74	228.70	+ 0.02	+ 10.09
107 Electric Wires	0.0912	212.00	212.00	208.22	+ 0.00	+ 1.82
108 Lighting Equipments	1.4431	175.37	175.37	174.04	+ 0.00	+ 0.76
109 Radio & Television	0.1843	150.87	150.87	140.42	+ 0.00	+ 7.44
110 Motor Vehicles	0.0244	235.59	235.59	211.00	+ 0.00	+ 11.65
111 Motorcycles	0.2570	160.54	160.54	133.88	+ 0.00	+ 19.91
112 Bicycles	3.3483	194.31	194.31	191.22	+ 0.00	+ 1.62

Annexure – C

CPI by Income Quintiles and Commodity Groups (2007-08=100 June, 2019 (% change with May, 2019) MoM

Income Quintiles	General	Food and non-alcoholic Beverages	Alcoholic Beverages, Tobacco	Clothing and foot-wear	Housing, water, Elec., Gas and other fuels	Furnishing and household equipment maintenance	Health	Transport	Communication	Recreation and culture	Education	Restaurants and hotels	Misc. goods and services
Combine	0.36	-0.06	7.48	0.10	0.05	0.70	0.19	1.38	1.12	0.05	0.00	0.70	1.50
Income Quintile 1	0.51	0.52	7.85	0.07	0.03	0.47	0.21	0.19	0.81	0.06	0.00	0.71	1.02
Income Quintile 2	0.41	0.32	7.81	0.07	0.03	0.45	0.21	0.52	1.06	0.06	0.00	0.71	0.99
Income Quintile 3	0.38	0.15	7.72	0.09	0.03	0.44	0.20	0.79	1.07	0.06	0.00	0.71	1.11
Income Quintile 4	0.34	-0.04	7.65	0.10	0.03	0.48	0.20	1.11	0.98	0.05	0.00	0.72	1.19
Income Quintile 5	0.34	-0.38	7.16	0.13	0.06	0.82	0.17	1.61	1.19	0.05	0.00	0.70	1.85

CPI by Income Quintiles and Commodity Groups (2007-08=100) June, 2019 (% change with June, 2018) YoY

Income Quintiles	General	Food and non-alcoholic Beverages	Alcoholic Beverages, Tobacco	Clothing and foot-wear	Housing, water, Elec., Gas and other fuels	Furnishing and household equipment maintenance	Health	Transport	Communication	Recreation and culture	Education	Restaurants and hotels	Misc. goods and services
Combine	8.89	7.52	22.09	6.21	9.99	9.26	8.59	14.96	8.82	7.11	5.46	6.51	9.61
Income Quintile 1	7.85	8.60	23.47	6.28	5.36	9.22	8.65	12.14	4.22	6.41	4.60	6.66	7.30
Income Quintile 2	7.63	8.14	23.37	6.24	5.67	9.12	8.68	12.60	5.16	6.38	4.52	6.65	7.33
Income Quintile 3	7.54	7.82	23.23	6.20	5.51	8.99	8.71	13.24	6.02	6.38	4.53	6.56	7.88
Income Quintile 4	9.04	7.50	22.89	6.16	11.49	9.02	8.66	13.90	7.38	6.58	4.51	6.53	8.30
Income Quintile 5	10.00	7.01	20.69	6.23	13.05	9.36	8.51	15.68	10.25	7.75	5.91	6.48	11.21