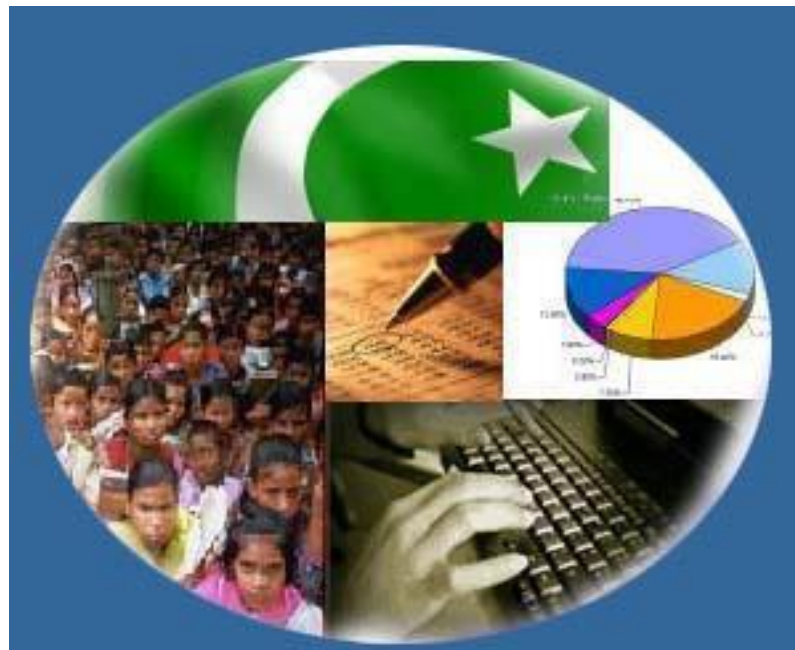




Monthly Review on Price Indices



January, 2019
(Base 2007-08)

Government of Pakistan
Ministry of Statistics
Pakistan Bureau of Statistics
Islamabad

Inflation in Brief

1. CPI inflation General increased by 7.2% on year-on-year basis in January 2019 as compared to an increase of 6.2% in the previous month and 4.4% in January 2018. On month-on-month basis, it increased by 1.0% in January 2019 as compared to a decreased of 0.4% in the previous month and no change in January 2018.
2. Core inflation measured by non-food non-energy CPI (Core NFNE) increased by 8.7% on (YoY) basis in January 2019 as compared to an increase of 8.4% in the previous month and 5.2% in January 2018. On (MoM) basis, it increased by 1.1% in January 2019 as compared to an increase of 0.3% in previous month, and an increase of 0.8% in corresponding month of last year i.e. January 2018.
3. Core inflation, measured by 20% weighted trimmed mean CPI (Core Trimmed) increased by 7.7% on (YoY) basis in January 2019 as compared to 6.9% in the previous month and by 4.6% in January 2018. On (MoM) basis, it increased by 1.0% in January 2019 as compared to an increase of 0.3% in the previous month and an increase of 0.6% in corresponding month of last year i.e. January 2018.
4. The CPI by Income Quintiles and Commodity Groups for January 2019 (MoM and YoY) is placed at **Annexure-C**.
5. SPI inflation on YoY basis increased by 3.7% in January 2019 as compared to an increase of 2.0% a month earlier and an increase of 2.0% in January 2018. On MoM basis, it increased by 0.6% as compared to no change in the previous month and a decrease of 1.0% in corresponding month of last year i.e. January 2018.
6. WPI inflation on YoY basis increased by 9.9% in January 2019 as compared to an increase of 12.1% a month earlier and an increase of 4.7% in January 2018. WPI inflation on MoM basis decreased by 0.2% in January 2019 as compared to a decrease of 0.9% a month earlier and an increase of 1.8% in corresponding month of last year i.e. January 2018.
7. Figures 1 and 2 show graphically the data of Table1. Table1.1 shows "Period Average" and "YoY" percent changes in indices of three years.

Table 1: Inflation (%) (Base 2007-08)

Period	CPI						Core Inflation				SPI**		WPI	
	General		Food		Non-food		NFNE*		Trimmed		YoY	MoM	YoY	MoM
	YoY	MoM	YoY	MoM	YoY	MoM	YoY	MoM	YoY	MoM				
Dec-17	4.6	-0.1	3.8	-0.6	5.1	0.2	5.5	0.2	4.7	0.2	2.2	-0.7	3.4	0.4
Jan-18	4.4	0.0	3.7	-1.0	4.9	0.8	5.2	0.8	4.6	0.6	2.0	-1.0	4.7	1.8
Feb-18	3.8	-0.3	2.2	-1.1	4.9	0.2	5.2	0.2	4.3	0.1	0.5	-1.2	4.1	-0.1
Mar-18	3.2	0.3	0.1	-0.3	5.4	0.7	5.8	0.7	4.1	0.2	-1.8	-0.6	3.6	0.2
Apr-18	3.7	1.8	-0.2	1.5	6.4	2.1	7.0	2.5	5.0	1.6	-0.5	0.4	4.0	1.3
May-18	4.2	0.5	1.0	1.0	6.4	0.2	7.0	0.2	5.1	0.3	0.5	0.1	5.6	1.3
Jun-18	5.2	0.6	3.0	0.8	6.7	0.4	7.1	0.3	5.4	0.2	1.9	1.8	7.6	1.5
Jul-18	5.8	0.9	3.5	0.6	7.4	1.2	7.6	1.2	5.9	0.9	3.6	1.2	10.5	2.4
Aug-18	5.8	0.2	3.3	0.2	7.6	0.2	7.7	0.2	5.9	0.2	3.3	0.2	11.0	0.8
Sep-18	5.1	-0.1	1.4	-0.7	7.7	0.3	8.0	0.4	5.8	0.1	1.0	-0.1	9.2	-1.5
Oct-18	6.8	2.3	2.7	1.9	9.6	2.6	8.2	1.1	6.7	0.8	1.3	1.1	13.1	4.2
Nov-18	6.5	0.1	1.8	-0.5	9.8	0.5	8.3	0.4	6.7	0.3	1.3	0.3	13.5	0.7
Dec-18	6.2	-0.4	0.9	-1.4	9.8	0.2	8.4	0.3	6.9	0.3	2.0	0.0	12.1	-0.9
Jan-19	7.2	1.0	2.4	0.3	10.5	1.4	8.7	1.1	7.7	1.0	3.7	0.6	9.9	-0.2

*NFNE is non-food non-energy, ** SPI for quintile 1. Digits 0.0* are due to rounding off.

Table 1.1 : Period Average and YoY % Changes of Indices (Base 2007-08)

Index	Average July-January % changes			January over January % changes		
	2018-19	2017-18	2016-17	2019	2018	2017
CPI	6.21	3.85	3.85	7.19	4.42	3.66
SPI	2.29	1.42	1.21	3.87	1.99	0.41
WPI	11.33	2.36	3.33	9.88	4.72	4.15

Figure 1: CPI Inflation YoY, Special Indices

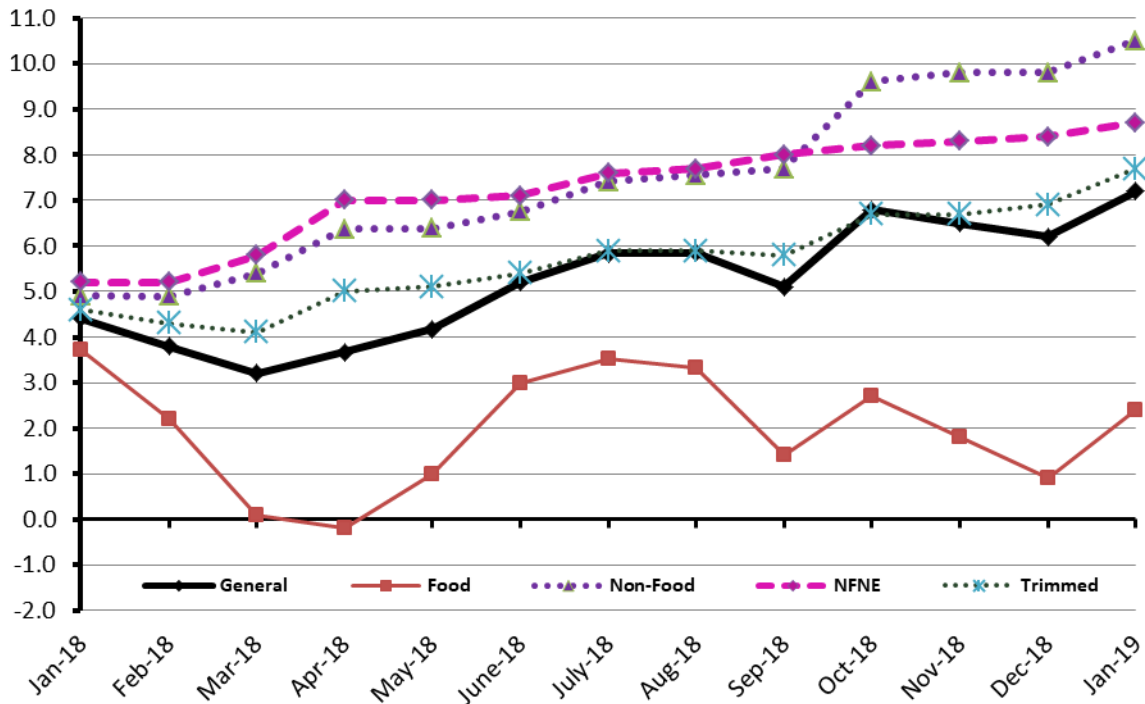
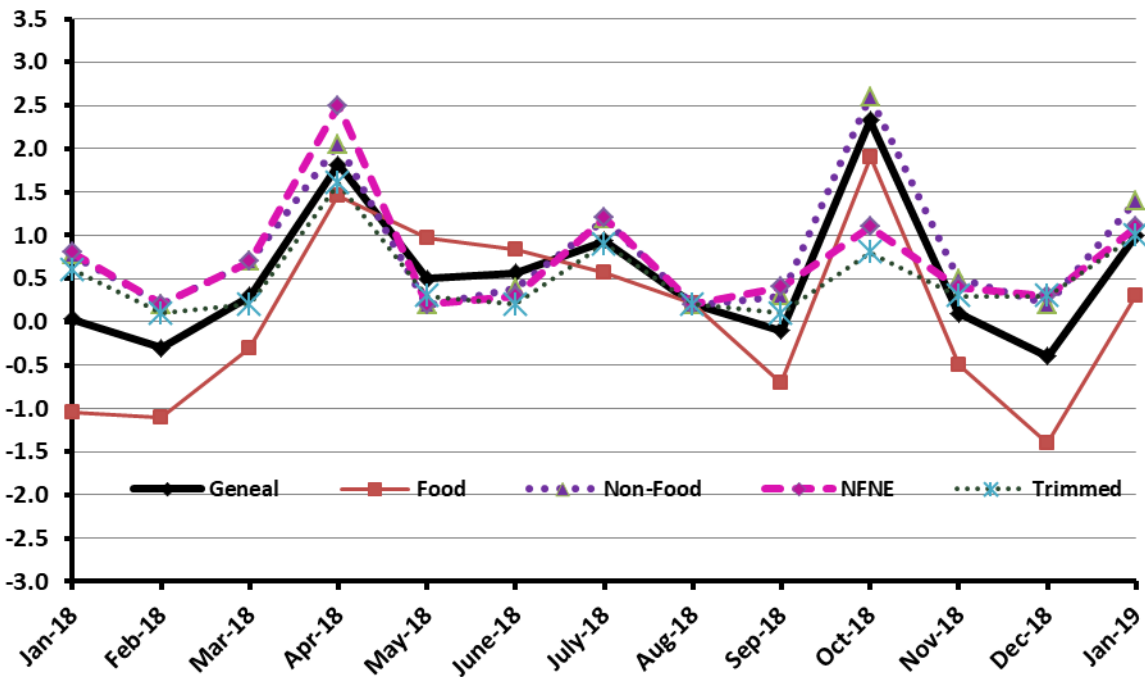


Figure 2: CPI Inflation MoM, Special Indices



I. Consumer Price Index (CPI)

The Consumer Price Index of January 2019 is increased by 1.00% over December 2018 and increased by 7.19% over corresponding month of the last year i.e. January 2018.

Table 2 : Consumer Price Index by Group of Commodities and Services (Base 2007-08)

No	Group	Group Weight (%)	Indices			% Change January 2019 Over		Impact (In % points) January 2019 Over	
			Jan 2019	Dec 2018	Jan 2018	Dec 2018	Jan 2018	Dec 2018	Jan 2018
	General	100.00	236.11	233.78	220.27	1.00	7.19	1.00	7.19
1.	Food & Non-alcoholic Beverages	34.83	235.91	235.23	232.25	0.29	1.58	0.10	0.58
	<i>Non-perishable Food Items</i>	29.84	242.15	241.80	231.25	0.14	4.71	0.05	1.48
	<i>Perishable Food Items</i>	4.99	198.58	195.93	238.26	1.35	-16.65	0.06	-0.90
2.	Alcoholic Bev.& Tobacco	1.41	353.17	349.35	309.15	1.09	14.24	0.02	0.28
3.	Clothing & Footwear	7.57	261.57	260.69	244.08	0.34	7.17	0.03	0.60
4.	Housing, Water, Electricity, Gas & Fuels	29.41	226.00	219.28	202.53	3.06	11.59	0.85	3.13
5.	Furnishing & Household Equipment Maintenance	4.21	252.03	250.21	232.97	0.73	8.18	0.03	0.36
6.	Health	2.19	236.59	235.76	218.26	0.35	8.40	0.01	0.18
7.	Transport	7.20	209.96	212.38	182.63	-1.14	14.96	-0.07	0.89
8.	Communication	3.22	143.57	143.57	133.20	0.00	7.79	0.00	0.15
9.	Recreation & Culture	2.02	215.30	214.52	198.48	0.36	8.47	0.01	0.15
10.	Education	3.94	288.68	289.55	262.35	-0.30	10.04	-0.01	0.47
11.	Restaurants & Hotels	1.23	302.94	301.38	286.90	0.52	5.59	0.01	0.09
12.	Miscellaneous	2.76	278.61	275.96	255.69	0.96	8.96	0.03	0.29

Main contributors to month-on-month and year-on-year percentage changes are given below and detail is given in Annexure A.

1. **Month-on-month** Top few commodities which varied from previous month i.e. December 2018 are given below: -

Food Increased: Tomatoes (27.56%), Sugar (6.15%), Fresh Fruits (3.50%), Pulse Moong (2.73%), Gur (2.26%), Pulse Gram (2.22%), Besan (2.11%), Dry Fruits (1.94%), Fish (1.72%), Fresh Vegetables (1.62%), Pulse Mash (1.34%), Cooking Oil (1.27%) Meat (1.20%), Cigarette (1.18%), Milk Powder (1.02%) and Tea (0.80%).

Decreased: Chicken (18.06%), Potatoes (15.01%), Onions (5.50%) and Eggs (1.27%).

Non-food Increased: Electricity (8.48%), House Rent (2.38%), Stationery (1.67%), Personal Equipments (1.36%), Woolen Readymade Garments (1.19%), Household Servant (0.86%), Drugs & Medicines (0.69%), and Cosmetics (0.52%).

Decreased: Motor Fuel (3.06%), Education (0.30%) and Household Equipment (0.13%).

Year-on-Year: Top few commodities which varied from previous year i.e. January, 2018 are given below:-

Food Increased: Spices (15.31%), Cigarettes (14.05%), Meat (13.6%), Tea (12.60%), Sugar (10.02%), Pulse Moong (8.32%), Milk Powder (7.74%), Beans (6.98%), Cooking Oil (6.81%), Pulse Gram (6.15%), Fish (5.93%) and Rice (5.85%).

Decreased: Onions (51.42%), Potatoes (27.44%), Chicken (18.85%), Fresh Vegetables (13.84%), Tomatoes (11.19%), Gram Whole (8.44%) and Pulse Mash (3.57%) and Fresh Fruits (3.03%).

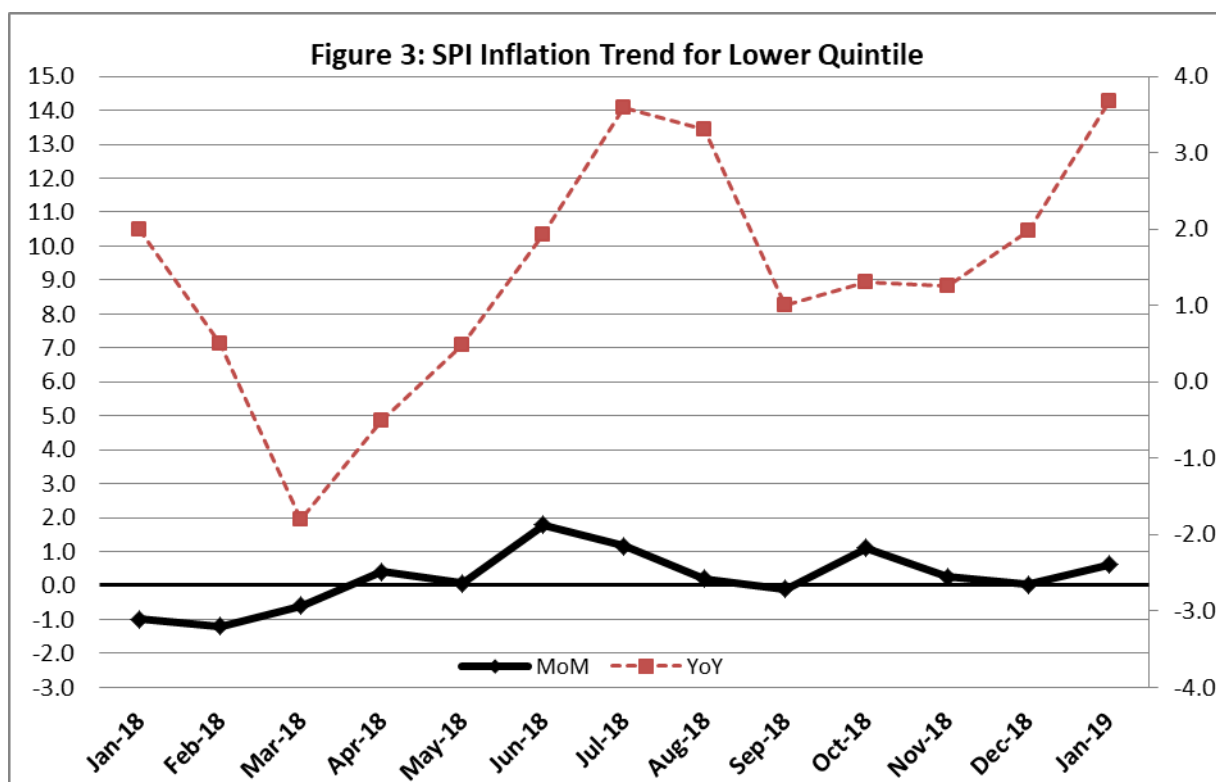
Non-food Increased: Gas (85.31%), Motor Fuel (18.05%), Kerosene Oil (16.14%), Transport Services (15.22%), Motor Vehicles (13.72%), Water Supply (12.94%), Cosmetics (12.79%), Construction Input Items (12.55%), Personal Equipment (11.37%), Furniture (10.76%), Education (10.04%), Motor Vehicle accessories (9.91%), Washing Soap & Detergents (9.65%), Construction Wage Rates (9.28%), Electricity (8.48%) and House Rent (8.20%).

II. Sensitive Price Indicator

Quintile-wise percentage changes YoY and MoM are given below in Table 3. The series from January 2018 to January 2019 is also graphed below in Figure 3.

Table 3: Sensitive Price Indicator (Base 2007-08)					
Quintiles	Indices			% Change January, 2019 over	
	January, 2019	December, 2018	January, 2018	December, 2018	January, 2018
1	221.05	219.71	213.22	0.61	3.67
2	230.18	229.03	221.22	0.50	4.05
3	231.83	230.88	222.75	0.41	4.08
4	244.05	242.94	227.45	0.46	7.30
5	249.19	248.30	225.47	0.36	10.52
Combined	239.07	238.12	224.13	0.40	6.67

Table 3.1 : Weekly Percentage Change of SPI During January, 2019					
Quintiles	% Change with Previous week				
	31.01.2019	24.01.2019	17.01.2019	10.01.2019	03.01.2019
Quintile 1	0.64	-0.04	-0.16	0.51	-0.07
Combined	1.65	-0.04	-0.21	0.40	-0.31



III. Wholesale Price Index

The Wholesale Price Index for January, 2019 decreased by 0.21% over December, 2018. It increased by 9.88% over the corresponding month of the last year. YoY and MoM movements, from January, 2018 to January, 2019 are also graphed below in Figure 4.

Table 4 : Wholesale Price Index by Group of Commodities (Base 2007-08)

No.	Group	Group Weight (%)	Indices			% Change Jan, 2019 over		Impact (in %age points) Jan, 2019 over	
			Jan. 2019	Dec. 2018	Jan, 2018	Dec. 2018	Jan, 2018	Dec. 2018	Jan, 2018
	General	100.00	247.21	247.72	224.99	-0.21	9.88	-0.21	9.88
1.	Agriculture, Forestry & Fishery Products	25.77	267.58	266.70	259.27	0.33	3.21	0.09	0.95
2.	Ores & Minerals, Electricity, Gas & Water	12.04	292.15	293.54	243.77	-0.47	19.85	-0.07	2.59
3.	Food Products, Beverages & Tobacco, Textiles, Apparel & Leather Products	31.11	253.40	251.73	231.89	0.66	9.28	0.21	2.97
	i. Food Products, Bev. & Tobacco	20.07	258.87	256.60	238.90	0.88	8.36	0.18	1.78
	ii. Textiles and Apparel	10.33	241.84	242.51	220.77	-0.28	9.54	-0.03	0.97
	iii. Leather Products	0.71	267.09	248.38	195.77	7.53	36.43	0.05	0.23
4.	Other Transportable Goods except Metal Products, Machinery & Equipment	22.37	212.67	218.04	183.97	-2.46	15.60	-0.48	2.85
5.	Metal Products, Machinery & Equipment	8.72	191.48	190.19	178.30	0.68	7.39	0.05	0.51

Main contributors to month-on-month and year-on-year percentage changes are given below and detail is given in Annexure B.

1. **Month-on-month** Top few commodities which varied from previous month i.e. December, 2018 are given below:-

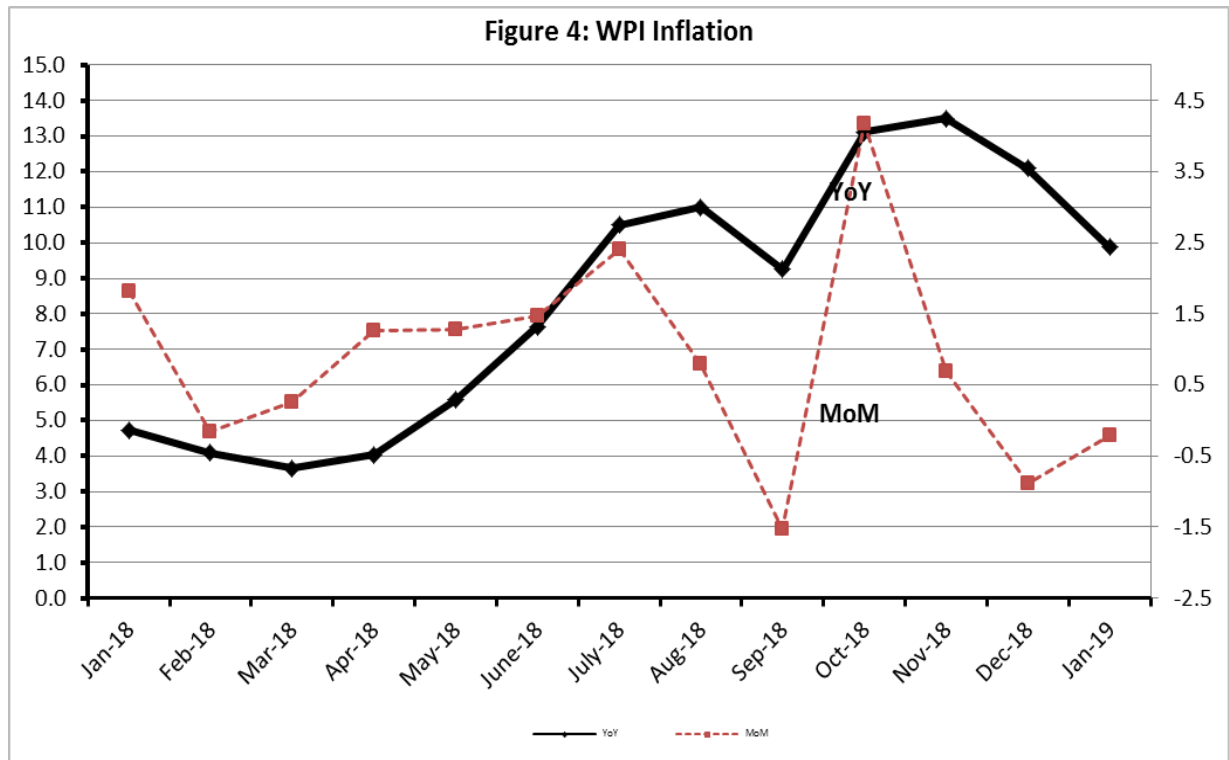
Increased: Other Leather N.E.C (16.20%), Motorcycles (14.64%), Vegetables (9.23%), Auto Tyres (8.58%), Other Cereal Flour (7.24%), Spices (6.01%), Sugar (5.44%), Jowar (4.76%), Fresh Fruits (4.42%), Sugar Crops (4.03%), Stimulant & Spice Crops (3.22%), Fertilizers (2.81%), Steel Products (2.76%), Glass Sheets and Chemicals (2.60%) (each), Insecticides (2.57%), Maize (2.55%), Quilts (2.06%), Rice (1.99%), Woven Fabrics (1.89%), Pulses (1.54%), Dried Fruits & Nuts (1.51%), Fire Wood (1.50%), Mineral Water, Fridge, Washing Machine (1.43%) (each), Dairy Products (1.17%), Vegetable Ghee (1.16%), Meat of Animals (1.12%) and Mobil Oil (1.09%).

Decreased: Potatoes (31.16%), Poultry (21.59%), Furnace Oil (18.84%), Petrol (5.07%), Diesel (3.33%), Bajra (3.18%), Eggs (1.84%) and Electrical Energy (1.42%).

2. **Year-on-year** Top few commodities which varied from previous year i.e. January, 2018 are given below:-

Increased: Other Leather N.E.C (79.70%), Natural Gas Liquefied (49.44%), Hard Board (29.63%), Kerosene Oil (29.29%), Jowar (27.17%), Motorcycle (25.85%), Lathe Machine (24.12%), Tobacco Products (23.69%), Diesel (23.47%), Chemicals (21.37%), Paints & Varnishes (20.60%), Stimulant & Spice Crops (20.02), Fertilizers (19.70%), Steel Bar & Sheets (19.68%), Spices (18.98%). Furnace Oil (16.22%), Footwears (15.52%), Fibre Crops (14.85%), Motor Vehicles (14.63%), Auto Tyres (14.55%), Cotton Yarn (13.86%), Coffee & Tea (13.84%), Bajra (13.83%), Cement (12.90%), Tractors (12.48%) and Meat of Animals (12.42%).

Decreased: Potatoes (37.90%), Vegetables (27.81%), Poultry (21.78%), Hides & Fur Skins (11.23%), Pulses (4.10%), Fish (3.47%) and Electrical Energy (1.42%).



Annexure – A: CPI by Commodity Groups and Commodities (2007-08=100)

Item and Specification	Weight	Index Numbers			% Change in Jan 2019 over			
		Jan 2019	Dec 2018	Jan 2018	Dec 2018	Jan 2018		
<i>General</i>	100.00	236.11	233.78	220.27	+	1.00	+	7.19
<i>Food and non-alcoholic Beverages</i>	34.834	235.91	235.23	232.23	+	0.29	+	1.58
1 Wheat	0.3477	209.26	207.82	206.02	+	0.69	+	1.57
2 Wheat Flour	4.1648	216.59	216.23	212.35	+	0.17	+	2.00
3 Wheat Product	0.0959	218.78	217.36	214.91	+	0.65	+	1.80
4 Besan	0.1500	276.26	270.56	274.45	+	2.11	+	0.66
5 Rice	1.5821	201.61	201.41	190.46	+	0.10	+	5.85
6 Cereals	0.1563	269.22	267.98	257.76	+	0.46	+	4.45
7 Bakery & Confectionary	1.1550	232.52	230.70	223.47	+	0.79	+	4.05
8 Nimco	0.4574	261.98	261.71	257.77	+	0.10	+	1.63
9 Meat	2.4303	329.05	325.16	289.65	+	1.20	+	13.60
10 Chicken	1.3596	170.06	207.54	209.57	-	18.0	-	18.85
11 Fish	0.2970	234.73	230.75	221.60	+	1.72	+	5.93
12 Milk Fresh	6.6800	290.49	288.19	279.02	+	0.80	+	4.11
13 Milk Products	0.6338	282.97	279.87	271.06	+	1.11	+	4.39
14 Milk Powder	0.1129	256.37	253.78	237.95	+	1.02	+	7.74
15 Eggs	0.4555	238.67	241.73	237.31	-	1.27	+	0.57
16 Mustard Oil	0.0952	167.11	165.01	162.43	+	1.27	+	2.88
17 Cooking Oil	1.7538	147.98	146.12	138.55	+	1.27	+	6.81
18 Vegetable Ghee	2.0714	152.96	152.03	143.60	+	0.61	+	6.52
19 Dry Fruits	0.2543	308.91	303.03	277.00	+	1.94	+	11.52
20 Fresh Fruits	1.8649	228.77	221.04	235.92	+	3.50	-	3.03
21 Pulse Masoor	0.2712	164.88	163.64	163.84	+	0.76	+	0.63
22 Pulse Moong	0.2336	238.23	231.90	219.94	+	2.73	+	8.32
23 Pulse Mash (Washed)	0.2098	221.02	218.10	229.20	+	1.34	-	3.57
24 Pulse Gram	0.2361	282.99	276.84	266.59	+	2.22	+	6.15
25 Gram Whole	0.1616	267.54	266.58	292.21	+	0.36	-	8.44
26 Beans	0.0269	258.59	257.17	241.72	+	0.55	+	6.98
27 Potatoes	0.4452	156.30	183.90	215.41	-	15.0	-	27.44
28 Onion	0.5093	164.24	173.80	338.10	-	5.50	-	<u>51.42</u>
29 Tomatoes	0.4172	136.22	106.79	153.38	+	27.5	-	11.19
30 Fresh Vegetables	1.7543	204.94	201.68	237.87	+	1.62	-	13.84
31 Sugar	1.0445	212.42	200.11	193.08	+	6.15	+	10.02
32 Gur	0.0220	265.55	259.69	257.03	+	2.26	+	3.31
33 Honey	0.0446	383.26	381.37	340.27	+	0.50	+	12.63
34 Sweet Meat	0.2483	275.93	274.96	256.43	+	0.35	+	7.60
35 Beverages	1.1990	233.73	233.54	225.95	+	0.08	+	3.44
36 Jam, Tomato Ketchup & Pickles	0.2454	238.45	237.94	224.39	+	0.21	+	6.27
37 Condiments	0.2656	294.79	290.89	276.77	+	1.34	+	6.51
38 Spices	0.5441	276.34	274.09	239.66	+	0.82	+	15.31
39 Tea	0.8377	318.33	315.81	282.72	+	0.80	+	12.60
<i>Alcoholic Beverages, Tobacco</i>	1.4135	353.17	349.35	309.16	+	1.09	+	14.24
40 Cigarettes	1.3906	349.14	345.08	306.13	+	1.18	+	14.05
41 Betel Leaves & Nuts	0.0229	597.65	608.69	493.00	-	1.81	+	21.23
<i>Clothing and footwear</i>	7.5708	261.58	260.69	244.09	+	0.34	+	7.17
42 Cotton Cloth	1.7286	253.16	252.80	235.59	+	0.14	+	7.46
43 Woolen Cloth	0.8759	280.30	279.67	262.43	+	0.23	+	6.81
44 Readymade Garments	0.9739	269.28	268.40	254.73	+	0.33	+	5.71
45 Woolen Readymade Garments	0.3964	289.31	285.91	268.07	+	1.19	+	7.92
46 Hosiery	0.5094	274.69	273.10	257.89	+	0.58	+	6.51

Annexure A: CPI by Commodity Groups and Commodities (2007-08=100)

Item and Specification	Weight	Index Numbers			% Change in Jan 2019 over			
		Jan 2019	Dec 2018	Jan	Dec 2018	Jan 2018		
47 Dopatta	0.4412	271.72	271.39	250.57	+	0.12	+	8.44
48 Cleaning and Laundry	0.2110	300.26	296.59	280.95	+	1.24	+	6.87
49 Tailoring	0.8840	358.21	356.47	333.86	+	0.49	+	7.29
50 Footwear	1.5504	180.90	180.86	167.79	+	0.02	+	7.81
<u>Housing, water, Elec., Gas and other</u>	29.4149	226.00	219.28	202.53	+	3.06	+	11.59
51 House Rent	21.8149	212.02	207.09	195.96	+	2.38	+	8.20
52 Construction Input Items	0.5623	292.42	290.47	259.82	+	0.67	+	12.55
53 Construction Wage Rates	0.3331	277.46	277.35	253.90	+	0.04	+	9.28
54 Water Supply	0.4971	194.95	194.95	172.61	+	0.00	+	12.94
55 Electricity	4.3985	258.28	238.10	238.10	+	8.48	+	8.48
56 Gas	1.5756	292.94	292.94	158.08	+	0.00	+	<u>85.31</u>
57 Kerosene Oil	0.0057	275.63	275.39	237.33	+	0.09	+	16.14
58 Firewood Whole	0.2277	305.94	305.35	300.58	+	0.19	+	1.78
<u>Furnishing and household</u>	4.2082	252.03	250.22	232.97	+	0.72	+	8.18
59 Furniture	0.3315	250.86	247.26	226.49	+	1.46	+	10.76
60 Household Textiles	0.6489	251.22	249.62	235.87	+	0.64	+	6.51
61 Household Equipment	0.5936	197.60	197.85	184.14	-	0.13	+	7.31
62 Utensils	0.3212	268.14	265.24	240.15	+	1.09	+	11.66
63 Plastic Products	0.2547	239.16	237.13	217.34	+	0.86	+	10.04
64 Washing Soaps & Detergents	0.7893	257.38	256.02	234.72	+	0.53	+	9.65
65 Sewing Needle & Dr Cell	0.1496	229.39	225.74	210.07	+	1.62	+	9.20
66 Household Servant	1.0432	279.81	277.43	262.86	+	0.86	+	6.45
67 Marriage Hall Charges	0.0762	272.06	272.06	256.32	+	0.00	+	6.14
<u>Health</u>	2.1868	236.58	235.75	218.26	+	0.35	+	8.39
68 Drugs & Medicines	1.2667	200.93	199.56	186.69	+	0.69	+	7.63
69 Medical Equipments	0.0080	268.30	267.75	255.80	+	0.21	+	4.89
70 Doctor (MBBS) Clinic Fee	0.5904	320.01	320.01	292.66	+	0.00	+	9.35
71 Medical Tests	0.3217	223.06	222.85	205.04	+	0.09	+	8.79
<u>Transport</u>	7.2023	209.96	212.38	182.63	-	1.14	+	14.96
72 Motor Vehicles	0.6630	204.71	204.45	180.02	+	0.13	+	13.72
73 Motor Vehicle Accessories	0.2439	236.56	235.16	215.23	+	0.60	+	9.91
74 Motor Fuel	3.0269	189.53	195.52	160.55	-	3.06	+	18.05
75 Mechanical Service	0.4552	252.53	251.72	236.37	+	0.32	+	6.84
76 Motor Vehicle Tax	0.1099	210.18	210.18	210.18	+	0.00	+	0.00
77 Transport Services	2.7034	224.55	224.60	194.89	-	0.02	+	15.22
<u>Communication</u>	3.2198	143.57	143.57	133.20	+	0.00	+	7.79
78 Postal Services	0.0662	272.63	272.63	254.14	+	0.00	+	7.28
79 Communication & Apparatus	3.1536	140.86	140.86	130.67	+	0.00	+	7.80
<u>Recreation and culture</u>	2.0227	215.30	214.51	198.46	+	0.37	+	8.49
80 Recreation & Culture	0.8634	137.61	137.61	131.60	+	0.00	+	4.57
81 Text Books	0.5706	304.92	304.92	287.98	+	0.00	+	5.88
82 Newspapers	0.1934	235.21	235.21	184.72	+	0.00	+	27.33
83 Stationery	0.3953	245.87	241.84	222.01	+	1.67	+	10.75
<u>Education</u>	3.9431	288.68	289.54	262.35	-	0.30	+	10.04
84 Education	3.9431	288.68	289.54	262.35	-	0.30	+	10.04
<u>Restaurants and hotels</u>	1.2286	302.94	301.38	286.89	+	0.52	+	5.59
85 Readymade Food	1.2286	302.94	301.38	286.89	+	0.52	+	5.59
<u>Misc. goods and services</u>	2.7550	278.60	275.96	255.69	+	0.96	+	8.96
86 Personal Care	1.4935	248.28	246.54	233.68	+	0.71	+	6.25
87 Cosmetics	0.3853	232.50	231.29	206.14	+	0.52	+	12.79
88 Blades	0.0322	217.60	211.72	201.35	+	2.78	+	8.07
89 Personal Equipments	0.8440	355.64	350.88	319.33	+	1.36	+	11.37

Annexure B: Wholesale Price Indices by Major Groups & Commodities (2007-08=100)

Item and Specification	Weight	Index Numbers			% Change in Jan 2019 over		
		Jan 19	Dec 18	Jan 18	Dec 2018	Jan 2018	
General	100.0000	247.21	247.72	224.99	-	0.21	+ 9.88
Agriculture Forestry & Fisher	25.7674	267.58	266.70	259.27	+	0.33	+ 3.21
001 Wheat	0.6297	214.48	213.18	209.85	+	0.61	+ 2.21
002 Maize	0.6764	229.91	224.19	205.68	+	2.55	+ 11.78
003 Rice	2.4413	190.79	187.06	174.67	+	1.99	+ 9.23
004 Sorghum / Jowar	0.0214	304.58	290.73	239.51	+	4.76	+ 27.17
005 Millet / Bajra	0.0374	209.51	216.39	184.05	-	3.18	+ 13.83
006 Vegetables	1.2441	195.27	178.77	270.50	+	9.23	- 27.81
007 Fresh Fruits	1.5144	254.18	243.41	242.06	+	4.42	+ 5.01
008 Dry Fruits	0.2478	281.40	280.01	267.11	+	0.50	+ 5.35
009 Cotton Seeds	1.1511	263.05	263.02	255.87	+	0.01	+ 2.81
010 Other Oil Seeds	0.0722	192.04	192.93	190.61	-	0.46	+ 0.75
011 Edible Roots / Potatoes	0.2540	134.45	195.30	216.51	-	31.16	- 37.90
012 Stimulant & Spice Crops	0.1634	326.03	315.85	271.65	+	3.22	+ 20.02
013 Pulses	0.4901	242.62	238.94	252.98	+	1.54	- 4.10
014 Sugar Crops	1.0725	275.85	265.16	257.62	+	4.03	+ 7.08
015 Fibre Crops	5.3169	280.99	282.27	244.64	-	0.45	+ 14.86
016 Unmanufactured Tobacco	0.0742	325.00	325.00	305.98	+	0.00	+ 6.22
017 Poultry	0.5633	173.65	221.45	221.99	-	21.59	- 21.78
018 Raw Milk from Bovine Animals	7.0279	286.63	285.96	275.47	+	0.23	+ 4.05
019 Eggs	0.5034	240.31	244.82	237.06	-	1.84	+ 1.37
020 Raw Animal Materials / Wool	0.0351	190.16	190.00	172.52	+	0.08	+ 10.22
021 Hides & Fur Skins, Raw	0.4834	92.92	92.91	104.72	+	0.01	- 11.27
022 Fuel Wood in Logs	0.0179	295.14	290.77	283.56	+	1.50	+ 4.08
023 Fish Live Fresh or Chilled	1.7295	462.20	460.30	478.82	+	0.41	- 3.47
Ores/Minerals, Elec., Gas & W	12.0389	292.15	293.54	243.77	-	0.47	+ 19.85
024 Coal not Agglomerated	0.7508	155.29	155.29	155.29	+	0.00	+ 0.00
025 Natural Gas Liquified	5.7385	318.12	317.10	212.87	+	0.32	+ 49.44
026 Salt & Pure Sodium Chloride	0.0584	275.23	275.23	257.14	+	0.00	+ 7.04
027 Electrical Energy	5.4912	283.90	288.00	288.00	-	1.42	- 1.42
Food, Beverages, Tobacco, Textil	31.1122	253.40	251.73	231.89	+	0.66	+ 9.28
Food Products, Beverages &	20.0718	258.87	256.60	238.90	+	0.88	+ 8.36
028 Meat of Animals	3.4559	349.94	346.05	311.27	+	1.12	+ 12.42
029 Vegetables & Fruit Juice	0.0058	228.62	228.62	226.05	+	0.00	+ 1.14
030 Dried Fruits & Nuts	0.1733	315.47	310.79	296.20	+	1.51	+ 6.51
031 Fruit Juices	0.3880	188.88	188.84	182.55	+	0.02	+ 3.47
032 Vegetable Oils Refined	1.9242	161.93	161.33	155.66	+	0.37	+ 4.03
033 Vegetable Ghee	1.5632	136.37	134.81	127.54	+	1.16	+ 6.92
034 Oil Cakes	0.9611	245.98	244.38	231.10	+	0.65	+ 6.44
035 Processed Liquid Milk	4.4437	296.92	296.92	287.08	+	0.00	+ 3.43
036 Milk & Cream in Solid Form	0.0316	237.78	236.57	223.37	+	0.51	+ 6.45
037 Ice Cream	0.0047	286.26	286.26	266.02	+	0.00	+ 7.61
038 Dairy Products N.E.C	0.0117	295.19	291.79	267.37	+	1.17	+ 10.41
039 Wheat Flour	2.3034	197.43	197.31	196.64	+	0.06	+ 0.40
040 Other Cereal Flour	0.0604	235.02	219.15	217.28	+	7.24	+ 8.16
041 Sugar Refined	1.7975	223.07	211.56	199.93	+	5.44	+ 11.57
042 Chocolate	0.0139	100.00	100.00	100.00	+	0.00	+ 0.00
043 Sugar Confectionary	0.0738	127.25	127.25	127.85	+	0.00	- 0.47
044 Coffee & Tea	0.7303	288.73	285.98	253.63	+	0.96	+ 13.84
045 Spices	0.1449	240.50	226.87	202.13	+	6.01	+ 18.98
046 Other Food Products	0.0336	312.04	309.34	294.50	+	0.87	+ 5.96
047 Mineral Water	0.0207	210.16	207.20	208.14	+	1.43	+ 0.97
048 Beverages	0.6303	176.55	176.55	172.85	+	0.00	+ 2.14
049 Tobacco Products	1.2998	393.80	393.80	318.37	+	0.00	+ 23.69
Textiles & Apparels	10.3289	241.84	242.51	220.77	-	0.28	+ 9.54
050 Cotton Yarn	5.2491	259.02	260.77	227.49	-	0.67	+ 13.86
051 Nylon Yarn	0.1719	143.99	143.99	143.99	+	0.00	+ 0.00
052 Blended Yarn	0.1689	194.81	193.85	188.55	+	0.50	+ 3.32
053 Woven Fabrics	0.0128	344.94	338.53	321.49	+	1.89	+ 7.29
054 Cotton Fabrics	0.6343	223.30	223.20	212.43	+	0.04	+ 5.12
055 Other Fabrics	1.1016	231.49	231.49	227.16	+	0.00	+ 1.91
056 Silk & Reyon Fabrics	0.7350	194.26	194.26	188.14	+	0.00	+ 3.25
057 Towels	0.1235	308.50	308.50	276.14	+	0.00	+ 11.72
058 Blankets	0.0029	277.52	277.52	265.03	+	0.00	+ 4.71
059 Bed Sheets	0.0913	268.60	268.60	256.87	+	0.00	+ 4.57
060 Quilts	0.0019	229.26	224.63	222.32	+	2.06	+ 3.12
061 Woolen Carpets	0.0383	196.43	196.43	196.43	+	0.00	+ 0.00

Annexure B: Wholesale Price Indices by Major Groups & Commodities (2007-08=100)

Item and Specification	Weight	Index Numbers			% Change in Jan 2019 over	
		Jan 19	Dec 18	Jan 18	Dec 2018	Jan 2018
062 Synthetic Carpets	0.0566	131.80	131.80	130.95	+ 0.00	+ 0.65
063 Hosiery Products	0.8832	254.53	254.53	244.11	+ 0.00	+ 4.27
064 Readymade Garments	1.0576	220.45	218.58	201.37	+ 0.86	+ 9.48
Leather Products	0.7115	267.09	248.38	195.77	+ 7.53	+ 36.43
065 Leather Without Hair	0.2973	228.93	228.93	212.68	+ 0.00	+ 7.64
066 Other Leather N.E.C	0.2567	372.02	320.16	207.02	+ 16.20	+ <u>79.70</u>
067 Footwears	0.1575	168.09	168.09	145.51	+ 0.00	+ 15.52
Other Transportable Goods	22.3659	212.67	218.04	183.97	- 2.46	+ 15.60
068 Timber	0.0165	244.62	244.62	233.32	+ 0.00	+ 4.84
069 Printing Paper	0.4279	174.76	174.76	168.59	+ 0.00	+ 3.66
070 Hard Board	0.1579	291.67	291.67	225.00	+ 0.00	+ 29.63
071 Coke	0.2797	163.45	163.45	163.45	+ 0.00	+ 0.00
072 Motor Spirit	1.5336	153.67	161.88	137.71	- 5.07	+ 11.59
073 Diesel Oil	5.2664	229.53	237.44	185.90	- 3.33	+ 23.47
074 Kerosine Oil	0.2151	221.58	222.96	171.38	- 0.62	+ 29.29
075 Furnace Oil	3.2664	135.85	167.39	116.89	- 18.84	+ 16.22
076 Mobil Oil	0.7114	213.34	211.03	201.21	+ 1.09	+ 6.03
077 Chemicals	1.7720	221.33	215.72	182.36	+ 2.60	+ 21.37
078 Dyeing Material	0.1539	150.72	150.72	146.55	+ 0.00	+ 2.85
079 Fertilizers	2.8657	267.64	260.32	223.59	+ 2.81	+ 19.70
080 Pesticides	0.2763	316.64	316.64	310.16	+ 0.00	+ 2.09
081 Insecticides	0.1276	151.37	147.58	140.56	+ 2.57	+ 7.69
082 Paints & Varnishes	0.1916	361.10	358.85	299.42	+ 0.63	+ 20.60
083 Medicines	1.1428	181.04	181.01	177.01	+ 0.02	+ 2.28
084 Soaps & Detergents	0.8168	200.31	199.52	192.28	+ 0.40	+ 4.18
085 Auto Tyres	0.2703	202.83	186.63	177.07	+ 8.68	+ 14.55
086 Plastic Products	0.4550	245.58	244.35	226.00	+ 0.50	+ 8.66
087 Glass sheets	0.2089	320.54	312.41	302.27	+ 2.60	+ 6.04
088 Other Glass Articles	0.1635	318.10	318.10	318.10	+ 0.00	+ 0.00
089 Ceramics & Sanitary Fixture	0.0244	246.05	246.05	234.59	+ 0.00	+ 4.89
090 Bricks, Blocks & Tiles	0.1566	232.13	232.45	223.59	- 0.14	+ 3.82
091 Cement	1.8145	238.47	240.25	211.23	- 0.74	+ 12.90
092 Bed Foam	0.0006	182.67	182.50	172.83	+ 0.09	+ 5.69
093 Matches	0.0505	172.57	172.57	171.36	+ 0.00	+ 0.71
Metal Product, Machinery & Eq	8.7156	191.48	190.19	178.30	+ 0.68	+ 7.39
094 Pig Iron	0.0593	128.97	128.97	128.97	+ 0.00	+ 0.00
095 Steel Bar & Sheets	1.4022	172.96	172.86	144.52	+ 0.06	+ 19.68
096 Pipe Fittings	0.0780	238.51	238.51	215.66	+ 0.00	+ 10.60
097 Steel Products	0.3879	189.08	184.01	176.70	+ 2.76	+ 7.01
098 Engines & Motors	0.0046	116.98	116.98	116.98	+ 0.00	+ 0.00
099 Vacuum Pumps	0.0155	123.69	123.69	123.69	+ 0.00	+ 0.00
100 Air Conditioners	0.0049	211.33	211.33	200.10	+ 0.00	+ 5.61
101 Cultivators	0.0551	190.66	190.66	190.66	+ 0.00	+ 0.00
102 Chuff Cutter	0.1293	153.46	153.46	153.46	+ 0.00	+ 0.00
103 Tractors	0.0028	226.93	226.93	201.75	+ 0.00	+ 12.48
104 Lathe Machines	0.0525	299.21	299.21	241.06	+ 0.00	+ 24.12
105 Concrete Mixture	0.0107	138.83	138.83	138.83	+ 0.00	+ 0.00
106 Fridge,WashM,SewM,Fans,Iron	1.1645	242.23	238.82	216.72	+ 1.43	+ 11.77
107 Electric Wires	0.0912	208.22	208.22	205.92	+ 0.00	+ 1.12
108 Lighting Equipments	1.4431	174.13	174.13	171.39	+ 0.00	+ 1.60
109 Radio & Television	0.1843	140.42	140.42	140.42	+ 0.00	+ 0.00
110 Motor Vehicles	0.0244	223.94	223.94	195.36	+ 0.00	+ 14.63
111 Motorcycles	0.2570	158.63	138.37	126.05	+ 14.64	+ 25.85
112 Bicycles	3.3483	194.31	194.31	187.65	+ 0.00	+ 3.55

Annexure – C

CPI by Income Quintiles and Commodity Groups (2007-08=100 January, 2019 (% change with December, 2018) MoM

Income Quintiles	General	Food and non-alcoholic Beverages	Alcoholic Beverages, Tobacco	Clothing and footwear	Housing, water, Elec., Gas and other fuels	Furnishing and household equipment maintenance	Health	Transport	Communication	Recreation and culture	Education	Restaurants and hotels	Misc. goods and services
Combine	1.00	0.29	1.09	0.34	3.06	0.73	0.35	-1.14	0.00	0.36	-0.30	0.52	0.96
Income Quintile 1	0.64	0.31	1.11	0.29	1.67	0.66	0.40	0.09	0.00	0.50	-0.32	0.66	0.70
Income Quintile 2	0.66	0.29	1.11	0.29	1.77	0.66	0.38	-0.31	0.00	0.47	-0.31	0.65	0.67
Income Quintile 3	0.65	0.28	1.12	0.31	1.78	0.63	0.38	-0.69	0.00	0.43	-0.32	0.59	0.74
Income Quintile 4	1.07	0.25	1.12	0.33	3.44	0.64	0.36	-1.06	0.00	0.40	-0.32	0.54	0.78
Income Quintile 5	1.26	0.31	1.05	0.38	3.81	0.76	0.32	-1.31	0.00	0.31	-0.29	0.47	1.16

CPI by Income Quintiles and Commodity Groups (2007-08=100) January, 2019 (% change with January, 2018) YoY

Income Quintiles	General	Food and non-alcoholic Beverages	Alcoholic Beverages, Tobacco	Clothing and footwear	Housing, water, Elec., Gas and other fuels	Furnishing and household equipment maintenance	Health	Transport	Communication	Recreation and culture	Education	Restaurants and hotels	Misc. goods and services
Combine	7.19	1.58	14.24	7.17	11.59	8.18	8.40	14.96	7.79	8.47	10.04	5.59	8.96
Income Quintile 1	4.41	0.99	13.82	7.39	6.76	9.17	8.21	20.35	3.71	6.64	10.27	4.97	7.22
Income Quintile 2	4.88	1.22	13.85	7.29	7.15	9.09	8.30	17.65	4.16	6.72	10.25	5.08	7.32
Income Quintile 3	5.16	1.34	14.16	7.23	7.09	8.97	8.33	16.18	4.95	6.98	10.11	5.27	7.73
Income Quintile 4	7.14	1.44	14.52	7.14	13.22	8.83	8.33	14.90	6.42	7.52	9.99	5.48	8.03
Income Quintile 5	9.09	2.01	14.23	7.10	14.93	7.80	8.50	14.50	9.17	9.83	10.01	5.80	10.12