



Monthly Review on Price Indices



August, 2019
(Base 2007-08)

Government of Pakistan
Ministry of Planning, Development and Reform
Pakistan Bureau of Statistics
Islamabad

Inflation in Brief

1. CPI inflation General increased by 11.6% on year-on-year basis in August, 2019 as compared to an increase of 10.3% in the previous month and 5.8% in August 2018. On month-on-month basis, it increased by 1.4 % in August 2019 as compared to an increase of 2.3% in the previous month and an increase of 0.2% in corresponding month i.e. August 2018.
2. Core inflation measured by non-food non-energy CPI (Core NFNE) increased by 8.2% on (YoY) basis in August 2019 as compared to an increase of 7.8% in the previous month and 7.7% in August 2018. On (MoM) basis, it increased by 0.5% in August 2019 as compared to an increase of 1.7% in previous month, and an increase of 0.2% in corresponding month of last year i.e. August 2018.
3. Core inflation, measured by 20% weighted trimmed mean CPI (Core Trimmed) increased by 8.5% on (YoY) basis in August 2019 as compared to 8.0% in the previous month and by 5.9% in August 2018. On (MoM) basis, it increased by 0.6% in August 2019 as compared to an increase of 1.7% in the previous month and an increase of 0.2% in corresponding month of last year i.e. August 2018.
4. The CPI by Income Quintiles and Commodity Groups for August 2019 (MoM and YoY) is placed at **Annexure-C**.
5. SPI inflation on YoY basis increased by 15.0% in August 2019 as compared to an increase of 12.2% a month earlier and an increase of 3.3% in August 2018. On MoM basis, it increased by 2.7% as compared to an increase of 2.6% in the previous month and an increase of 0.2% in corresponding month of last year i.e. August 2018.
6. WPI inflation on YoY basis increased by 13.6% in August 2019 as compared to an increase of 13.5% a month earlier and an increase of 11.0% in August 2018. WPI inflation on MoM basis increased by 0.9% in August 2019 as compared to an increase of 3.1% a month earlier and an increase of 0.8% in corresponding month of last year i.e. August 2018.
7. Figures 1 and 2 show graphically the data of Table1. Table1.1 shows "Period Average" and "YoY" percent changes in indices of three years.

Table 1: Inflation (%) (Base 2007-08)														
Period	CPI						Core Inflation				SPI**		WPI	
	General		Food		Non-food		NFNE*		Trimmed		YoY	MoM	YoY	MoM
	YoY	MoM	YoY	MoM	YoY	MoM	YoY	MoM	YoY	MoM				
Jul-18	5.8	0.9	3.5	0.6	7.4	1.2	7.6	1.2	5.9	0.9	3.6	1.2	10.5	2.4
Aug-18	5.8	0.2	3.3	0.2	7.6	0.2	7.7	0.2	5.9	0.2	3.3	0.2	11.0	0.8
Sep-18	5.1	-0.1	1.4	-0.7	7.7	0.3	8.0	0.4	5.8	0.1	1.0	-0.1	9.2	-1.5
Oct-18	6.8	2.3	2.7	1.9	9.6	2.6	8.2	1.1	6.7	0.8	1.3	1.1	13.1	4.2
Nov-18	6.5	0.1	1.8	-0.5	9.8	0.5	8.3	0.4	6.7	0.3	1.3	0.3	13.5	0.7
Dec-18	6.2	-0.4	0.9	-1.4	9.8	0.2	8.4	0.3	6.9	0.3	2.0	0.0	12.1	-0.9
Jan-18	7.2	1.0	2.4	0.3	10.5	1.4	8.7	1.1	7.7	1.0	3.7	0.6	9.9	-0.2
Feb-19	8.2	0.6	5.0	1.4	10.4	0.1	8.8	0.2	7.7	0.2	6.5	1.5	11.0	0.9
Mar-19	9.4	1.4	8.4	2.9	10.1	0.5	8.5	0.5	7.9	0.4	8.8	1.6	12.6	1.7
Apr-19	8.8	1.3	8.6	1.7	9.0	1.0	7.0	1.0	7.2	0.9	9.3	0.9	13.8	2.3
May-19	9.1	0.8	8.7	1.1	9.4	0.6	7.2	0.4	7.5	0.4	10.8	1.2	14.0	1.4
Jun-19	8.9	0.4	8.2	0.4	9.3	0.4	7.2	0.3	7.3	0.4	10.6	1.6	12.7	0.3
Jul-19	10.3	2.3	9.2	1.5	11.1	2.8	7.8	1.7	8.0	1.7	12.2	2.6	13.5	3.1
Aug-19	11.6	1.4	11.9	2.6	11.5	0.6	8.2	0.5	8.5	0.6	15.0	2.7	13.6	0.9

*NFNE is non-food non-energy, ** SPI for quintile 1. Digits 0.0* are due to rounding off.

Table 1.1: Period Average and YoY % Changes of Indices (Base 2007-08)						
Index	Average July- August % changes			August over August % changes		
	2019-20	2018-19	2017-18	2019	2018	2017
CPI	10.98	5.84	3.16	11.63	5.84	3.41
SPI	13.56	3.42	-0.24	14.96	3.26	-0.09
WPI	13.51	10.75	0.84	13.56	11.00	1.02

Figure 1: CPI Inflation YoY, Special Indices

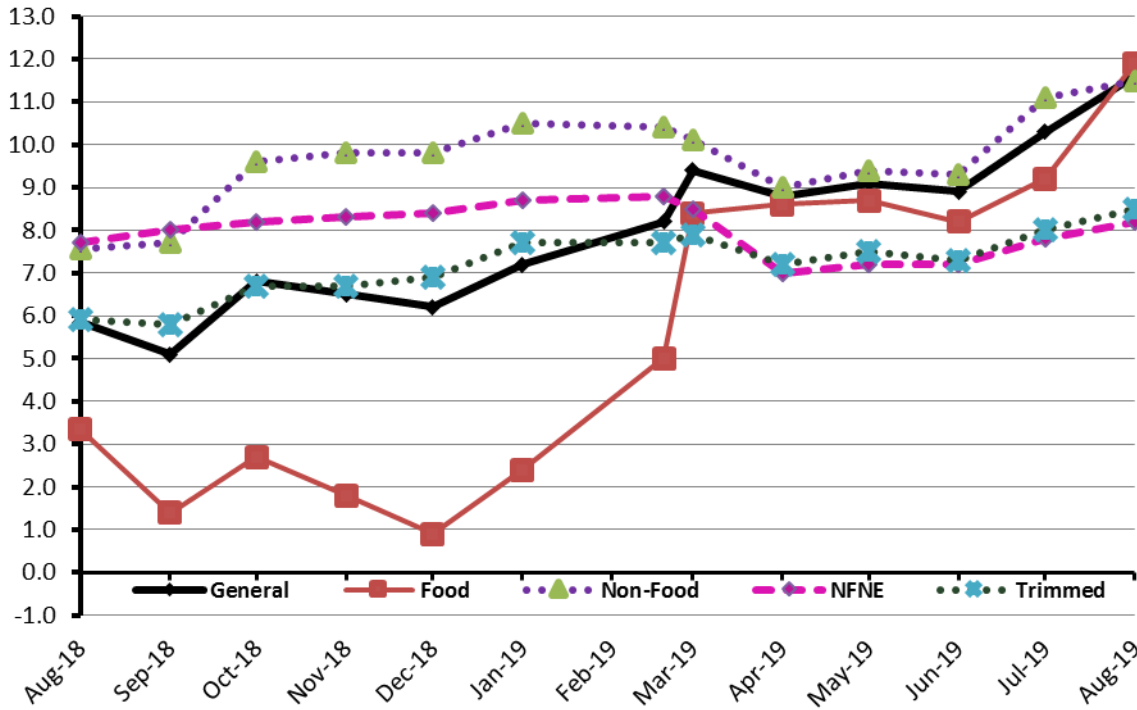
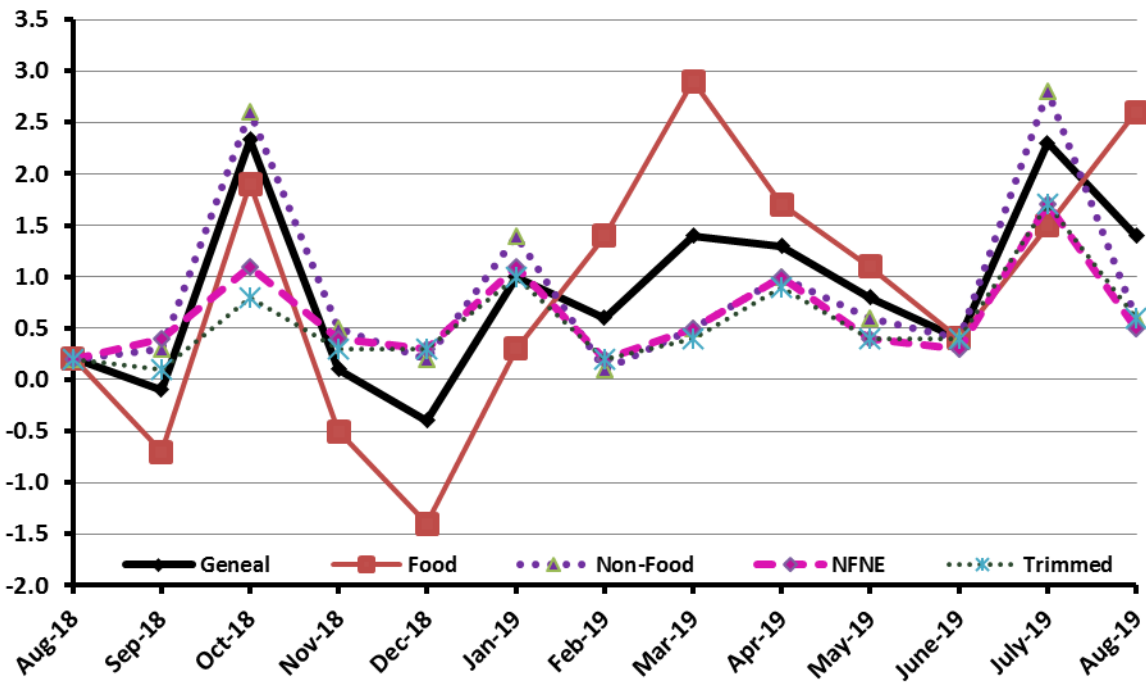


Figure 2: CPI Inflation MoM, Special Indices



I. Consumer Price Index (CPI)

The Consumer Price Index of August 2019 is increased by 1.38% over July 2019 and increased by 11.63% over corresponding month of the last year i.e. August 2018.

Table 2: Consumer Price Index by Group of Commodities and Services (Base 2007-08)

No	Group	Group Weight (%)	Indices			% Change August 2019 Over		Impact (In % points) August 2019 Over	
			August 2019	July 2019	August 2018	July 2019	August 2018	July 2019	August 2018
	General	100.00	255.94	252.46	229.27	1.38	11.63	1.38	11.63
1.	Food & Non-alcoholic Beverages	34.83	264.07	256.84	238.58	2.81	10.68	1.00	3.87
	<i>Non-perishable Food Items</i>	29.84	259.05	253.83	234.60	2.06	10.42	0.62	3.18
	<i>Perishable Food Items</i>	4.99	294.09	274.80	262.33	7.02	12.11	0.38	0.69
2.	Alcoholic Bev. & Tobacco	1.41	428.89	425.77	313.47	0.73	36.82	0.02	0.71
3.	Clothing & Footwear	7.57	276.34	272.94	254.67	1.25	8.51	0.10	0.72
4.	Housing, Water, Electricity, Gas & Fuels	29.41	237.57	237.55	210.80	0.01	12.70	0.00	3.44
5.	Furnishing & Household Equipment Maint.	4.21	268.03	265.70	242.22	0.88	10.66	0.04	0.47
6.	Health	2.19	245.22	244.82	225.20	0.16	8.89	0.00	0.19
7.	Transport	7.20	235.99	232.44	204.74	1.53	15.26	0.10	0.98
8.	Communication	3.22	145.78	145.40	133.77	0.26	8.98	0.00	0.17
9.	Recreation & Culture	2.02	227.00	224.67	209.88	1.04	8.16	0.02	0.15
10.	Education	3.94	301.75	301.36	281.89	0.13	7.05	0.01	0.34
11.	Restaurants & Hotels	1.23	319.62	316.31	295.02	1.05	8.34	0.02	0.13
12.	Miscellaneous	2.76	302.58	296.19	264.45	2.16	14.42	0.07	0.46

Main contributors to month-on-month and year-on-year percentage changes are given below and detail is given in Annexure A.

1. Month-on-month Top few commodities which varied from previous month i.e. July 2019 are given below:-

Food Increased: Tomatoes (46.07%), Onions (28.89%), Chicken (26.62%), Potatoes (7.73%), Eggs (7.51%), Fresh Vegetables (7.08%), Ghee (3.86%), Sugar (3.67%), Milk Powder (1.29%), Pulse Gram (1.20%), Pulse Mash (1.16%), Pulse Masoor (1.14%) and Milk Fresh (0.86%).

Decreased: Fresh fruit (4.89%) and Dry fruits (0.32%).

Non-food Increased: Motor Fuel (2.76%), Washing Soaps and Detergents (2.01%) and Construction Input Items (0.16%).

Decreased: Kerosene Oil (19.17%).

Year-on-Year: Top few commodities which varied from previous year i.e. August, 2018 are given below:-

Food Increased: Onions (62.55%), Chicken (53.88%), Pulse Moong (48.42%), Cigarettes (38.21%), Sugar (34.28%), Pulse Mash (23.81%), Potatoes (22.08%), Ghee (14.15%), Pulse Gram (13.41%), Pulse Masoor (11.96%), Milk Powder (11.51%), Meat (11.44%), Wheat Flour (9.25%), Rice (6.45%) and Milk Fresh (5.66%).

Decreased: Tomatoes (18.91%), Eggs (2.47%) and Gram Whole (1.88%).

Non-food Increased: Gas (142.57%), Motor Fuel (24.29%), Electricity (11.33%) and Cosmetics (9.43%).

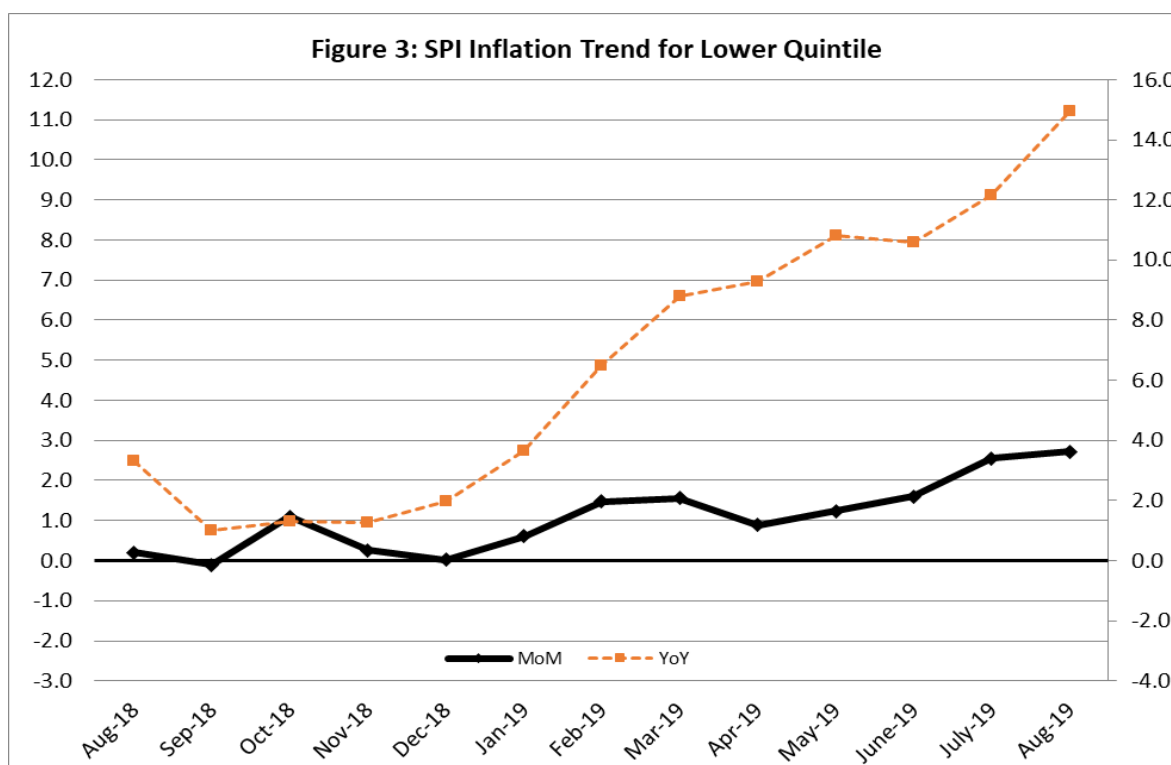
Decreased: Kerosene Oil (11.81%).

II. Sensitive Price Indicator (SPI)

Quintile-wise percentage changes YoY and MoM are given below in Table 3. The series from August 2018 to August 2019 is also graphed below in Figure 3.

Table 3: Sensitive Price Indicator (Base 2007-08)					
Quintiles	Indices			% Change August, 2019 over	
	August, 2019	July, 2019	August, 2018	July, 2019	August, 2018
1	249.14	242.54	216.72	2.72	14.96
2	261.90	254.37	225.06	2.96	16.37
3	264.22	256.53	226.81	3.00	16.49
4	274.86	267.18	231.80	2.87	18.58
5	279.77	272.71	230.84	2.59	21.20
Combined	270.51	263.01	228.72	2.85	18.27

Table 3.1 : Weekly Percentage Change of SPI During August , 2019				
Quintiles	% Change with Previous week			
	01.08.2019	16.08.2019	22.08.2019	29.08.2019
Quintile 1	0.44	1.43	0.57	-0.12
Combined	0.81	1.23	0.64	-0.18



iii. Wholesale Price Index (WPI)

The Wholesale Price Index for August, 2019 increased by 0.88% over July, 2019. It increased by 13.56% over the corresponding month of the last year. YoY and MoM movements, from August, 2018 to August, 2019 are also graphed below in Figure 4.

Table 4: Wholesale Price Index by Group of Commodities (Base 2007-08)

No.	Group	Group Weight (%)	Indices			% Change Aug, 2019 over		Impact (in %age points) Aug, 2019 over	
			Aug. 2019	July. 2019	Aug, 2018	July. 2019	Aug, 2018	July. 2019	Aug, 2018
	General	100.00	274.74	272.34	241.93	0.88	13.56	0.88	13.56
1.	Agriculture, Forestry & Fishery Products	25.77	291.11	290.10	274.04	0.35	6.23	0.10	1.82
2.	Ores & Minerals, Electricity, Gas & Water	12.04	352.11	352.31	244.14	-0.06	44.22	-0.01	5.37
3.	Food Products, Beverages & Tobacco, Textiles, Apparel & Leather Products	31.11	272.22	270.27	247.95	0.72	9.79	0.22	3.12
	i. Food Products, Bev. & Tobacco	20.07	276.03	274.02	248.83	0.73	10.93	0.15	2.26
	ii. Textiles and Apparel	10.33	263.38	261.41	249.49	0.75	5.57	0.07	0.59
	iii. Leather Products	0.71	293.07	293.07	200.77	0.00	45.97	0.00	0.27
4.	Other Transportable Goods except Metal Products, Machinery & Equipment	22.37	245.25	238.52	216.87	2.82	13.09	0.55	2.62
5.	Metal Products, Machinery & Equipment	8.72	204.16	203.60	186.72	0.28	9.34	0.02	0.63

Main contributors to month-on-month and year-on-year percentage changes are given below and detail is given in Annexure B.

- Month-on-month** Top few commodities which varied from previous month i.e. July, 2019 are given below:-

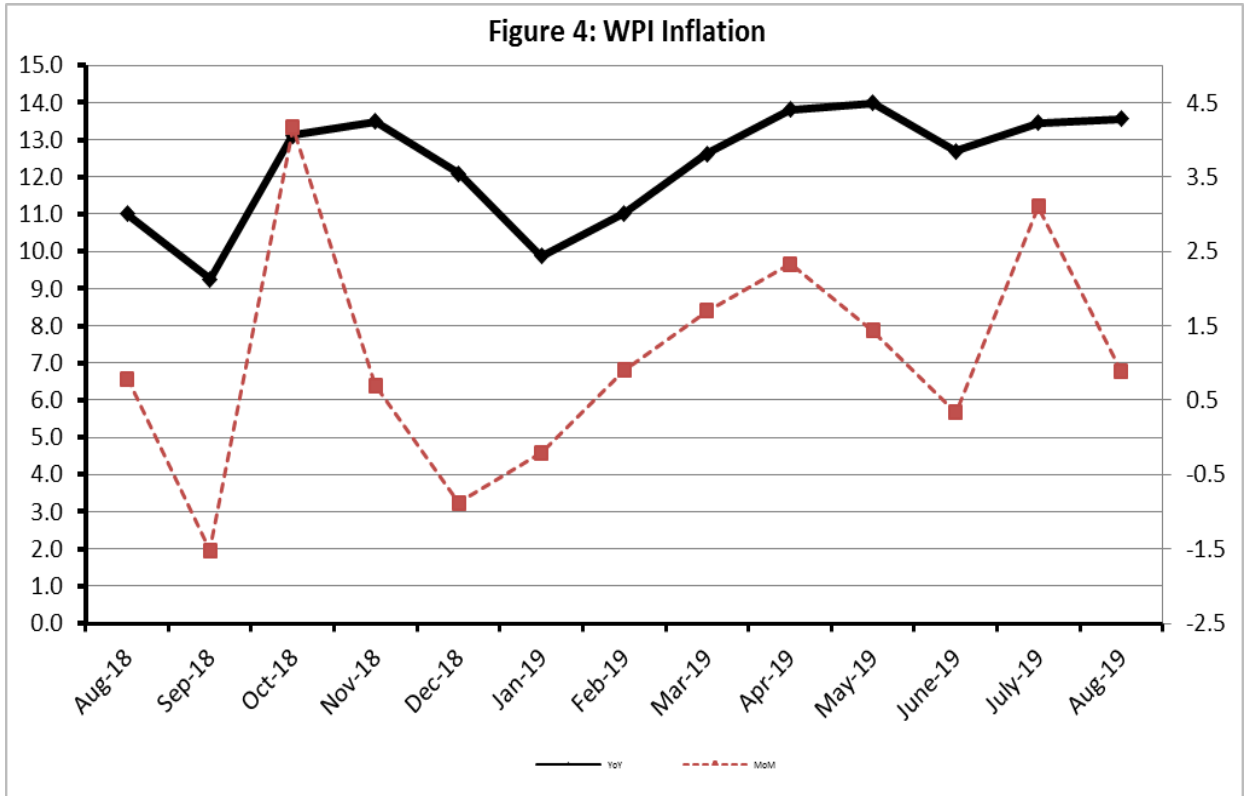
Increased: Poultry (26.99%), Potatoes (25.31%), Dyeing Material (23.28%), Stimulant & Spice Crops (14.90%), Vegetables (9.80%), Eggs (9.79%), Electric Wires (8.30%), Chocolate (7.91%), Bed Foam (7.70%), Diesel (7.18%), Other Fabrics (6.03%), Cotton Fabrics (5.94%), Furnace Oil (5.70%), Vegetable & Fruit Juice (5.63%), Kerosene Oil (5.47%), Unmanufactured Tobacco (4.76%), Petrol (4.57%), Sugar (4.56%), Ice Cream (4.39%), Vegetable Ghee (3.56%), Vegetable Oils (2.58%), Steel Products (2.08%), Salt & Pure Sodium Chloride (1.50%), Dried Fruits & Nuts (1.434.39%), Other Cereal Flour (1.31%), Milk & Cream in Solid Form (1.24%), Mobil Oil (1.16%), Readymade Garments (1.11%) and Paints & Varnishes (1.06%).

Decreased: Hides & Fur Skin (35.61%), Jowar (5.39%), Maize (4.59%), Fresh Fruits (4.53%), Towels (3.35%), Fibre Crops (2.69%), Cement (1.59%), Plastic Products (1.56%), Dairy Products (1.29%) and Bajra (121%).

- Year-on-year** Top few commodities which varied from previous year i.e. August, 2018 are given below:-

Increased: Other Leather N.E.C (114.14%), Natural Gas Liquefied (90.85%), Poultry (53.98%), Stimulant & Spice Crops (49.15%), Potatoes (47.82%), Lathe Machine (44.40%), Jowar (39.29%), Sugar (36.13%), Sugar Crops (35.74%), Dyeing Materials (28.97%), Auto Tyres (27.85%), Spices (24.94%), Tobacco Products (23.20%), Steel Bar & Sheets (21.12%), Kerosene Oil (21.08%), Petrol (21.02%), Motor Cycles (20.69%), Motor Vehicles (20.44%), Diesel (19.21%), Pipe Fittings (17.80%), Radio & Television (17.37%), Fridge, Washing Machines. Etc. (16.30%), Milk & Cream in Solid Form (15.95%), Electric Wires (15.72%), Glass Sheets (15.34%) and Rice (15.31%).

Decreased: Hides & Fur Skin (38.37%). Fibre Crops (7.99%). Eggs (5.08%), Towels (2.41%) and Cement (1.26%).



Annexure – A: CPI by Commodity Groups and Commodities (2007-08=100)

Item and Specification	Weight	Index Numbers			% Change in Aug 2019 over			
		Aug 2019	July 2019	Aug 2018	July 2019	Aug 2018		
<i>General</i>	100.00	255.94	252.46	229.27	+	1.38	+	11.63
<i>Food and non-alcoholic Beverages</i>	34.834	264.07	256.84	238.58	+	2.81	+	10.68
1 Wheat	0.3477	220.26	219.88	198.97	+	0.17	+	10.70
2 Wheat Flour	4.1648	231.75	230.02	212.13	+	0.75	+	9.25
3 Wheat Product	0.0959	226.28	223.74	213.31	+	1.14	+	6.08
4 Besan	0.1500	284.44	279.51	265.36	+	1.76	+	7.19
5 Rice	1.5821	210.49	209.34	197.74	+	0.55	+	6.45
6 Cereals	0.1563	278.08	276.20	264.58	+	0.68	+	5.10
7 Bakery & Confectionary	1.1550	246.26	245.40	228.93	+	0.35	+	7.57
8 Nimco	0.4574	269.64	267.43	260.84	+	0.83	+	3.37
9 Meat	2.4303	349.72	346.47	313.81	+	0.94	+	11.44
10 Chicken	1.3596	235.18	185.74	152.83	+	26.6	+	<u>53.88</u>
11 Fish	0.2970	242.55	241.19	228.91	+	0.56	+	5.96
12 Milk Fresh	6.6800	303.28	300.69	287.03	+	0.86	+	5.66
13 Milk Products	0.6338	295.45	292.69	277.39	+	0.94	+	6.51
14 Milk Powder	0.1129	273.83	270.33	245.56	+	1.29	+	11.51
15 Eggs	0.4555	194.97	181.35	199.90	+	7.51	-	2.47
16 Mustard Oil	0.0952	175.81	174.51	164.27	+	0.74	+	7.03
17 Cooking Oil	1.7538	158.63	152.98	141.32	+	3.69	+	12.25
18 Vegetable Ghee	2.0714	168.25	161.99	147.39	+	3.86	+	14.15
19 Dry Fruits	0.2543	312.97	313.97	293.19	-	0.32	+	6.75
20 Fresh Fruits	1.8649	272.98	287.00	259.58	-	4.89	+	5.16
21 Pulse Masoor	0.2712	176.58	174.59	157.72	+	1.14	+	11.96
22 Pulse Moong	0.2336	323.18	321.91	217.75	+	0.39	+	48.42
23 Pulse Mash (Washed)	0.2098	255.42	252.50	206.30	+	1.16	+	23.81
24 Pulse Gram	0.2361	292.48	289.02	257.89	+	1.20	+	13.41
25 Gram Whole	0.1616	262.42	260.31	267.44	+	0.81	-	1.88
26 Beans	0.0269	275.37	272.86	245.51	+	0.92	+	12.16
27 Potatoes	0.4452	266.23	247.12	218.08	+	7.73	+	22.08
28 Onion	0.5093	411.47	319.24	253.14	+	28.8	+	<u>62.55</u>
29 Tomatoes	0.4172	213.59	146.22	263.39	+	46.0	-	18.91
30 Fresh Vegetables	1.7543	309.15	288.71	280.39	+	7.08	+	10.26
31 Sugar	1.0445	267.95	258.46	199.54	+	3.67	+	34.28
32 Gur	0.0220	337.51	327.31	252.43	+	3.12	+	33.70
33 Honey	0.0446	415.24	411.66	351.07	+	0.87	+	18.28
34 Sweet Meat	0.2483	291.72	288.51	271.54	+	1.11	+	7.43
35 Beverages	1.1990	244.03	242.19	233.42	+	0.76	+	4.55
36 Jam, Tomato Ketchup & Pickles	0.2454	250.53	250.17	232.81	+	0.14	+	7.61
37 Condiments	0.2656	311.21	307.46	286.39	+	1.22	+	8.67
38 Spices	0.5441	294.48	292.93	260.82	+	0.53	+	12.91
39 Tea	0.8377	324.56	322.71	306.97	+	0.57	+	5.73
<i>Alcoholic Beverages, Tobacco</i>	1.4135	428.89	425.76	313.47	+	0.74	+	36.82
40 Cigarettes	1.3906	426.03	423.00	308.24	+	0.72	+	38.21
41 Betel Leaves & Nuts	0.0229	602.78	593.32	630.86	+	1.59	-	4.45
<i>Clothing and footwear</i>	7.5708	276.34	272.94	254.67	+	1.25	+	8.51
42 Cotton Cloth	1.7286	278.02	276.11	247.77	+	0.69	+	12.21
43 Woolen Cloth	0.8759	295.21	293.26	267.11	+	0.66	+	10.52
44 Readymade Garments	0.9739	281.45	278.92	264.49	+	0.91	+	6.41
45 Woolen Readymade Garments	0.3964	289.82	289.82	266.61	+	0.00	+	8.71
46 Hosiery	0.5094	288.98	285.97	266.49	+	1.05	+	8.44

Annexure A: CPI by Commodity Groups and Commodities (2007-08=100)

Item and Specification	Weight	Index Numbers			% Change in Aug 2019 over		
		Aug 2019	July 2019	Aug 2018	July 2019	Aug 2018	
47 Dopatta	0.4412	290.24	286.55	265.73	+	1.29	+ 9.22
48 Cleaning and Laundry	0.2110	314.95	313.50	291.30	+	0.46	+ 8.12
49 Tailoring	0.8840	370.77	368.36	349.60	+	0.65	+ 6.06
50 Footwear	1.5504	189.92	181.78	179.97	+	4.48	+ 5.53
<u>Housing, water, Elec., Gas and other</u>	29.4149	237.57	237.55	210.80	+	0.01	+ 12.70
51 House Rent	21.8149	218.77	218.77	206.00	+	0.00	+ 6.20
52 Construction Input Items	0.5623	318.92	318.42	280.01	+	0.16	+ 13.91
53 Construction Wage Rates	0.3331	290.23	288.46	267.25	+	0.61	+ 8.60
54 Water Supply	0.4971	196.05	196.05	189.82	+	0.00	+ 3.28
55 Electricity	4.3985	265.08	265.08	238.10	+	0.00	+ 11.33
56 Gas	1.5756	383.45	383.45	158.08	+	0.00	+ 142.57
57 Kerosene Oil	0.0057	241.67	298.98	274.04	-	19.1	- 11.81
58 Firewood Whole	0.2277	310.93	310.59	298.70	+	0.11	+ 4.09
<u>Furnishing and household equip-</u>	4.2082	268.03	265.70	242.20	+	0.88	+ 10.66
59 Furniture	0.3315	265.29	263.38	237.77	+	0.73	+ 11.57
60 Household Textiles	0.6489	260.48	257.79	243.45	+	1.04	+ 7.00
61 Household Equipment	0.5936	208.88	207.57	192.31	+	0.63	+ 8.62
62 Utensils	0.3212	289.15	286.54	255.56	+	0.91	+ 13.14
63 Plastic Products	0.2547	260.59	255.98	227.91	+	1.80	+ 14.34
64 Washing Soaps & Detergents	0.7893	275.08	269.67	242.53	+	2.01	+ 13.42
65 Sewing Needle & Dr Cell	0.1496	242.52	240.25	221.16	+	0.94	+ 9.66
66 Household Servant	1.0432	299.97	299.97	271.59	+	0.00	+ 10.45
67 Marriage Hall Charges	0.0762	280.41	280.41	266.62	+	0.00	+ 5.17
<u>Health</u>	2.1868	245.21	244.82	225.20	+	0.16	+ 8.89
68 Drugs & Medicines	1.2667	211.05	210.54	190.58	+	0.24	+ 10.74
69 Medical Equipments	0.0080	287.38	285.70	261.95	+	0.59	+ 9.71
70 Doctor (MBBS) Clinic Fee	0.5904	325.23	325.23	304.41	+	0.00	+ 6.84
71 Medical Tests	0.3217	231.83	231.24	215.21	+	0.26	+ 7.72
<u>Transport</u>	7.2023	235.99	232.44	204.74	+	1.53	+ 15.26
72 Motor Vehicles	0.6630	234.27	231.42	196.91	+	1.23	+ 18.97
73 Motor Vehicle Accessories	0.2439	247.82	245.41	218.65	+	0.98	+ 13.34
74 Motor Fuel	3.0269	229.44	223.28	184.60	+	2.76	+ 24.29
75 Mechanical Service	0.4552	262.54	261.43	244.82	+	0.42	+ 7.24
76 Motor Vehicle Tax	0.1099	247.08	211.97	210.18	+	16.5	+ 17.56
77 Transport Services	2.7034	237.75	237.73	221.00	+	0.01	+ 7.58
<u>Communication</u>	3.2198	145.77	145.39	133.78	+	0.26	+ 8.96
78 Postal Services	0.0662	347.68	347.68	272.45	+	0.00	+ 27.61
79 Communication & Apparatus	3.1536	141.54	141.15	130.86	+	0.28	+ 8.16
<u>Recreation and culture</u>	2.0227	227.00	224.66	209.89	+	1.04	+ 8.15
80 Recreation & Culture	0.8634	139.83	138.20	137.22	+	1.18	+ 1.90
81 Text Books	0.5706	327.76	323.14	304.43	+	1.43	+ 7.66
82 Newspapers	0.1934	242.78	242.78	202.94	+	0.00	+ 19.63
83 Stationery	0.3953	264.24	262.49	235.55	+	0.67	+ 12.18
<u>Education</u>	3.9431	301.75	301.36	281.89	+	0.13	+ 7.05
84 Education	3.9431	301.75	301.36	281.89	+	0.13	+ 7.05
<u>Restaurants and hotels</u>	1.2286	319.62	316.32	295.01	+	1.04	+ 8.34
85 Readymade Food	1.2286	319.62	316.32	295.01	+	1.04	+ 8.34
<u>Misc. goods and services</u>	2.7550	302.58	296.18	264.45	+	2.16	+ 14.42
86 Personal Care	1.4935	257.64	256.33	240.91	+	0.51	+ 6.94
87 Cosmetics	0.3853	245.40	244.56	224.25	+	0.34	+ 9.43
88 Blades	0.0322	230.54	229.09	205.13	+	0.63	+ 12.39
89 Personal Equipments	0.8440	410.95	392.82	326.73	+	4.62	+ 25.78

Annexure B:Wholesale Price Indices by Major Groups & Commodities (2007-08=100)

Item and Specification	Weight	Index Numbers			% Change in Aug 2019 over			
		Aug 19	Jul 19	Aug 18	Jul 2019	Aug 2018		
General	100.0000	274.74	272.34	241.93	+	0.88	+	13.56
Agriculture Forestry & Fisher	25.7674	291.11	290.10	274.04	+	0.35	+	6.23
001 Wheat	0.6297	223.19	223.47	204.53	-	0.13	+	9.12
002 Maize	0.6764	244.68	256.44	222.24	-	4.59	+	10.10
003 Rice	2.4413	209.04	210.48	181.28	-	0.68	+	15.31
004 Sorghum / Jowar	0.0214	408.41	431.70	293.20	-	5.39	+	39.29
005 Millet / Bajra	0.0374	272.95	276.28	249.84	-	1.21	+	9.25
006 Vegetables	1.2441	387.89	353.28	346.19	+	9.80	+	12.05
007 Fresh Fruits	1.5144	312.34	327.17	298.81	-	4.53	+	4.53
008 Dry Fruits	0.2478	291.70	289.45	275.54	+	0.78	+	5.86
009 Cotton Seeds	1.1511	303.71	303.71	268.41	+	0.00	+	13.15
010 Other Oil Seeds	0.0722	204.45	206.07	196.32	-	0.79	+	4.14
011 Edible Roots / Potatoes	0.2540	306.66	244.73	207.46	+	25.31	+	47.82
012 Stimulant & Spice Crops	0.1634	481.15	418.74	322.59	+	14.90	+	49.15
013 Pulses	0.4901	263.87	262.69	232.09	+	0.45	+	13.69
014 Sugar Crops	1.0725	349.69	349.69	257.62	+	0.00	+	35.74
015 Fibre Crops	5.3169	258.56	265.72	281.00	-	2.69	-	7.99
016 Unmanufactured Tobacco	0.0742	347.72	331.92	316.51	+	4.76	+	9.86
017 Poultry	0.5633	245.06	192.98	159.15	+	26.99	+	<u>53.98</u>
018 Raw Milk from Bovine Animals	7.0279	292.99	292.16	285.13	+	0.28	+	2.76
019 Eggs	0.5034	196.46	178.94	206.97	+	9.79	-	5.08
020 Raw Animal Materials / Wool	0.0351	185.60	187.42	176.92	-	0.97	+	4.91
021 Hides & Fur Skins, Raw	0.4834	59.92	93.06	97.22	-	35.61	-	38.37
022 Fuel Wood in Logs	0.0179	300.39	300.39	283.56	+	0.00	+	5.94
023 Fish Live Fresh or Chilled	1.7295	506.11	506.24	451.22	-	0.03	+	12.16
Ores/Minerals, Elec., Gas & W	12.0389	352.11	352.31	244.14	-	0.06	+	44.22
024 Coal not Agglomerated	0.7508	155.29	155.29	155.29	+	0.00	+	0.00
025 Natural Gas Liquified	5.7385	407.52	407.99	213.53	-	0.12	+	<u>90.85</u>
026 Salt & Pure Sodium Chloride	0.0584	295.35	290.99	269.74	+	1.50	+	9.49
027 Electrical Energy	5.4912	321.72	321.72	288.00	+	0.00	+	11.71
Food,Beverages,Tobacco,Textil	31.1122	272.22	270.27	247.95	+	0.72	+	9.79
Food Products, Beverages &	20.0718	276.03	274.02	248.83	+	0.73	+	10.93
028 Meat of Animals	3.4559	368.83	367.93	339.60	+	0.24	+	8.61
029 Vegetables & Fruit Juice	0.0058	257.55	243.83	228.62	+	5.63	+	12.65
030 Dried Fruits & Nuts	0.1733	344.42	339.56	299.69	+	1.43	+	14.93
031 Fruit Juices	0.3880	202.70	201.72	188.66	+	0.49	+	7.44
032 Vegetable Oils Refined	1.9242	175.96	171.53	158.54	+	2.58	+	10.99
033 Vegetable Ghee	1.5632	149.40	144.26	130.77	+	3.56	+	14.25
034 Oil Cakes	0.9611	265.98	265.37	244.38	+	0.23	+	8.84
035 Processed Liquid Milk	4.4437	305.39	306.92	296.67	-	0.50	+	2.94
036 Milk & Cream in Solid Form	0.0316	261.29	258.09	225.34	+	1.24	+	15.95
037 Ice Cream	0.0047	300.49	287.85	286.26	+	4.39	+	4.97
038 Dairy Products N.E.C	0.0117	303.63	307.61	279.65	-	1.29	+	8.58
039 Wheat Flour	2.3034	213.96	213.49	193.24	+	0.22	+	10.72
040 Other Cereal Flour	0.0604	235.55	232.50	217.45	+	1.31	+	8.32
041 Sugar Refined	1.7975	287.15	274.62	210.94	+	4.56	+	36.13
042 Chocolate	0.0139	109.63	101.59	100.00	+	7.91	+	9.63
043 Sugar Confectionary	0.0738	128.15	128.15	127.25	+	0.00	+	0.71
044 Coffee & Tea	0.7303	295.14	293.62	279.34	+	0.52	+	5.66
045 Spices	0.1449	252.81	252.10	202.35	+	0.28	+	24.94
046 Other Food Products	0.0336	323.23	323.23	294.50	+	0.00	+	9.76
047 Mineral Water	0.0207	219.67	219.33	211.50	+	0.16	+	3.86
048 Beverages	0.6303	181.25	180.59	172.63	+	0.37	+	4.99
049 Tobacco Products	1.2998	393.80	393.80	319.65	+	0.00	+	23.20
Textiles & Apparels	10.3289	263.38	261.41	249.49	+	0.75	+	5.57
050 Cotton Yarn	5.2491	287.52	288.43	280.03	-	0.32	+	2.67
051 Nylon Yarn	0.1719	143.99	143.99	143.99	+	0.00	+	0.00
052 Blended Yarn	0.1689	214.02	213.37	200.05	+	0.30	+	6.98
053 Woven Fabrics	0.0128	367.78	367.78	321.49	+	0.00	+	14.40
054 Cotton Fabrics	0.6343	244.57	230.85	219.87	+	5.94	+	11.23
055 Other Fabrics	1.1016	253.96	239.51	227.85	+	6.03	+	11.46
056 Silk & Reyon Fabrics	0.7350	199.83	199.38	188.81	+	0.23	+	5.84
057 Towels	0.1235	298.17	308.50	305.52	-	3.35	-	2.41

Annexure B: Wholesale Price Indices by Major Groups & Commodities

(2007-08=100)

Item and Specification	Weight	Index Numbers			% Change in Aug 2019 over	
		Aug 19	Jul 19	Aug 18	Jul 2019	Aug 2018
058 Blankets	0.0029	277.52	277.52	265.03	+ 0.00	+ 4.71
059 Bed Sheets	0.0913	277.23	277.23	256.87	+ 0.00	+ 7.93
060 Quilts	0.0019	232.74	232.74	222.32	+ 0.00	+ 4.69
061 Woolen Carpets	0.0383	199.40	199.40	196.43	+ 0.00	+ 1.51
062 Synthetic Carpets	0.0566	138.98	138.98	131.80	+ 0.00	+ 5.45
063 Hosiery Products	0.8832	272.90	274.49	250.36	- 0.58	+ 9.00
064 Readymade Garments	1.0576	230.61	228.07	204.85	+ 1.11	+ 12.58
Leather Products	0.7115	293.07	293.07	200.77	+ 0.00	+ 45.97
065 Leather Without Hair	0.2973	229.55	229.55	212.68	+ 0.00	+ 7.93
066 Other Leather N.E.C	0.2567	443.31	443.31	207.02	+ 0.00	+ 114.14
067 Footwears	0.1575	168.09	168.09	168.09	+ 0.00	+ 0.00
Other Transportable Goods	22.3659	245.25	238.52	216.87	+ 2.82	+ 13.09
068 Timber	0.0165	250.12	250.12	239.89	+ 0.00	+ 4.26
069 Printing Paper	0.4279	174.76	174.76	172.70	+ 0.00	+ 1.19
070 Hard Board	0.1579	291.67	291.67	291.67	+ 0.00	+ 0.00
071 Coke	0.2797	163.45	163.45	163.45	+ 0.00	+ 0.00
072 Motor Spirit	1.5336	199.07	190.37	164.49	+ 4.57	+ 21.02
073 Diesel Oil	5.2664	291.12	271.61	244.20	+ 7.18	+ 19.21
074 Kerosine Oil	0.2151	277.28	262.91	229.00	+ 5.47	+ 21.08
075 Furnace Oil	3.2664	200.72	189.89	175.33	+ 5.70	+ 14.48
076 Mobil Oil	0.7114	235.42	232.72	209.31	+ 1.16	+ 12.47
077 Chemicals	1.7720	235.21	234.53	206.63	+ 0.29	+ 13.83
078 Dyeing Material	0.1539	194.38	157.67	150.72	+ 23.28	+ 28.97
079 Fertilizers	2.8657	272.67	274.88	241.32	- 0.80	+ 12.99
080 Pesticides	0.2763	325.56	325.56	312.32	+ 0.00	+ 4.24
081 Insecticides	0.1276	150.84	151.54	145.90	- 0.46	+ 3.39
082 Paints & Varnishes	0.1916	391.52	387.40	354.53	+ 1.06	+ 10.43
083 Medicines	1.1428	196.75	197.27	178.61	- 0.26	+ 10.16
084 Soaps & Detergents	0.8168	204.45	203.10	193.00	+ 0.66	+ 5.93
085 Auto Tyres	0.2703	228.82	228.67	178.97	+ 0.07	+ 27.85
086 Plastic Products	0.4550	251.41	255.39	240.38	- 1.56	+ 4.59
087 Glass sheets	0.2089	351.28	348.58	304.55	+ 0.77	+ 15.34
088 Other Glass Articles	0.1635	351.41	351.41	318.10	+ 0.00	+ 10.47
089 Ceramics & Sanitary Fixture	0.0244	263.26	263.26	243.24	+ 0.00	+ 8.23
090 Bricks, Blocks & Tiles	0.1566	249.76	247.51	223.76	+ 0.91	+ 11.62
091 Cement	1.8145	235.70	239.52	238.70	- 1.59	- 1.26
092 Bed Foam	0.0006	198.17	184.00	176.50	+ 7.70	+ 12.28
093 Matches	0.0505	174.27	172.57	171.36	+ 0.99	+ 1.70
Metal Product, Machinery & Eq	8.7156	204.16	203.60	186.72	+ 0.28	+ 9.34
094 Pig Iron	0.0593	128.97	128.97	128.97	+ 0.00	+ 0.00
095 Steel Bar & Sheets	1.4022	206.94	206.19	170.86	+ 0.36	+ 21.12
096 Pipe Fittings	0.0780	276.22	273.82	234.48	+ 0.88	+ 17.80
097 Steel Products	0.3879	207.30	203.07	182.68	+ 2.08	+ 13.48
098 Engines & Motors	0.0046	116.98	116.98	116.98	+ 0.00	+ 0.00
099 Vacuum Pumps	0.0155	123.69	123.69	123.69	+ 0.00	+ 0.00
100 Air Conditioners	0.0049	223.39	221.55	203.80	+ 0.83	+ 9.61
101 Cultivators	0.0551	190.66	190.66	190.66	+ 0.00	+ 0.00
102 Chuff Cutter	0.1293	153.46	153.46	153.46	+ 0.00	+ 0.00
103 Tractors	0.0028	226.93	226.93	216.82	+ 0.00	+ 4.66
104 Lathe Machines	0.0525	348.09	348.09	241.06	+ 0.00	+ 44.40
105 Concrete Mixture	0.0107	138.83	138.83	138.83	+ 0.00	+ 0.00
106 Fridge, WashM, SewM, Fans, Iron	1.1645	266.02	265.69	228.73	+ 0.12	+ 16.30
107 Electric Wires	0.0912	240.96	222.49	208.22	+ 8.30	+ 15.72
108 Lighting Equipments	1.4431	179.06	179.06	174.04	+ 0.00	+ 2.88
109 Radio & Television	0.1843	164.81	164.81	140.42	+ 0.00	+ 17.37
110 Motor Vehicles	0.0244	262.69	262.69	218.11	+ 0.00	+ 20.44
111 Motorcycles	0.2570	161.98	161.98	134.21	+ 0.00	+ 20.69
112 Bicycles	3.3483	196.16	196.16	191.22	+ 0.00	+ 2.58

Annexure – C

CPI by Income Quintiles and Commodity Groups (2007-08=100 Aug, 2019 (% change with July, 2019) MoM

Income Quintiles	General	Food and non-alcoholic Beverages	Alcoholic Beverages, Tobacco	Clothing and foot-wear	Housing, water, Elec., Gas and other fuels	Furnishing and household equipment maintenance	Health	Transport	Communication	Recreation and culture	Education	Restaurants and hotels	Misc. goods and services
Combine	1.38	2.81	0.74	1.25	0.01	0.88	0.16	1.53	0.26	1.04	0.13	1.04	2.16
Income Quintile 1	1.81	3.05	0.69	1.32	-0.01	1.68	0.17	0.89	0.28	1.01	0.09	1.21	1.02
Income Quintile 2	1.67	2.98	0.70	1.30	0.00	1.55	0.17	1.23	0.34	1.04	0.10	1.15	1.09
Income Quintile 3	1.60	2.95	0.72	1.29	0.00	1.43	0.17	1.39	0.31	1.06	0.12	1.10	1.38
Income Quintile 4	1.50	2.92	0.74	1.27	0.00	1.26	0.16	1.65	0.26	1.05	0.12	1.08	1.62
Income Quintile 5	1.16	2.60	0.75	1.19	0.02	0.62	0.15	1.55	0.24	1.04	0.14	1.00	2.84

CPI by Income Quintiles and Commodity Groups (2007-08=100) Aug, 2019 (% change with Aug, 2018) YoY

Income Quintiles	General	Food and non-alcoholic Beverages	Alcoholic Beverages, Tobacco	Clothing and foot-wear	Housing, water, Elec., Gas and other fuels	Furnishing and household equipment maintenance	Health	Transport	Communication	Recreation and culture	Education	Restaurants and hotels	Misc. goods and services
Combine	11.63	10.68	36.82	8.51	12.70	10.66	8.89	15.26	8.96	8.15	7.05	8.34	14.42
Income Quintile 1	10.73	11.34	38.17	8.76	9.03	11.86	8.91	10.11	4.38	7.69	6.27	8.82	8.76
Income Quintile 2	11.23	11.11	38.08	8.65	11.97	11.52	8.95	11.24	5.36	7.59	6.19	8.70	8.85
Income Quintile 3	11.20	10.92	38.18	8.56	11.67	11.19	8.99	12.55	6.20	7.48	6.17	8.49	10.23
Income Quintile 4	11.82	10.79	38.15	8.49	13.88	10.96	8.96	13.80	7.53	7.58	6.16	8.42	11.29
Income Quintile 5	12.08	10.28	35.01	8.42	13.67	10.39	8.81	16.39	10.40	8.74	7.47	8.21	18.31