



Monthly Review on Price Indices



June, 2018
(Base 2007-08)

Government of Pakistan
Ministry Of Statistics
Pakistan Bureau of Statistics
Islamabad

Inflation in Brief

1. CPI inflation General increased by 5.2% on year-on-year basis in June 2018 as compared to an increase of 4.2% in the previous month and 3.9% in June 2017. On month-on-month basis, it increased by 0.6% in June 2018 as compared to an increase of 0.5% in the previous month and decrease of 0.4% in June 2017.
2. Core inflation measured by non-food non-energy CPI (Core NFNE) increased by 7.1% on (YoY) basis in June 2018 as compared to an increase of 7.0% in the previous month and 5.5% in June 2017. On (MoM) basis, it increased by 0.3% in June 2018 as compared to increase of 0.2% in previous month, and an increase of 0.1% in corresponding month of last year i.e. June 2017.
3. Core inflation, measured by 20% weighted trimmed mean CPI (Core Trimmed) increased by 5.4% on (YoY) basis in June 2018 as compared to 5.1% in the previous month and by 4.2% in June 2017. On (MoM) basis, it increased by 0.2% in June 2018 as compared to an increase of 0.3% in the previous month and an increase of 0.0% in corresponding month of last year i.e. June 2017.
4. SPI inflation on YoY increased by 1.9% in June 2018 as compared to an increase of 0.5% a month earlier and an increase of 1.4% in June 2017. On MoM basis, it increased by 1.8% in June 2018 as compared to an increase of 0.1% a month earlier and an increase of 0.1% in June 2017.
5. WPI inflation on YoY basis increased by 7.6% in June 2018 as compared to an increase of 5.6% a month earlier and an increase of 3.3% in June 2017. WPI inflation on MoM basis increased by 1.5% in June 2018 as compared to an increase of 1.3% a month earlier and a decrease of 0.5% in corresponding month of last year i.e. June 2017.
6. Figures 1 and 2 show graphically the data of Table 1. Table 1.1 shows "Period Average" and "YoY" percent changes in indices of three years.

Table 1: Inflation (%) (Base 2007-08)														
Period	CPI						Core Inflation				SPI**		WPI	
	General		Food		Non-food		NFNE*		Trimmed		YoY	MoM	YoY	MoM
	YoY	MoM	YoY	MoM	YoY	MoM	YoY	MoM	YoY	MoM				
May-17	5.0	0.0	4.9	-0.2	5.1	0.2	5.5	0.2	4.8	0.2	2.4	-0.9	5.2	-0.2
Jun-17	3.9	-0.4	2.4	-1.1	5.0	0.1	5.5	0.1	4.2	0.0	1.4	0.1	3.3	-0.5
Jul-17	2.9	0.3	-0.1	0.0	5.1	0.5	5.6	0.7	4.0	0.4	-0.4	-0.5	0.7	-0.2
Aug-17	3.4	0.2	1.3	0.4	5.0	0.1	5.5	0.1	4.2	0.1	-0.1	0.5	1.0	0.3
Sep-17	3.9	0.6	2.4	1.3	4.9	0.2	5.4	0.1	4.1	0.1	1.9	2.1	1.6	0.1
Oct-17	3.8	0.7	2.2	0.6	4.9	0.8	5.3	0.9	4.0	0.6	2.1	0.9	2.3	0.6
Nov-17	4.0	0.4	2.4	0.4	5.1	0.4	5.5	0.3	4.2	0.3	2.1	0.3	2.9	0.4
Dec-17	4.6	-0.1	3.8	-0.6	5.1	0.2	5.5	0.2	4.7	0.2	2.2	-0.7	3.4	0.4
Jan-18	4.4	0.0	3.7	-1.0	4.9	0.8	5.2	0.8	4.6	0.6	2.0	-1.0	4.7	1.8
Feb-18	3.8	-0.3	2.2	-1.1	4.9	0.2	5.2	0.2	4.3	0.1	0.5	-1.2	4.1	-0.1
Mar-18	3.2	0.3	0.1	-0.3	5.4	0.7	5.8	0.7	4.1	0.2	-1.8	-0.6	3.6	0.2
Apr-18	3.7	1.8	-0.2	1.5	6.4	2.1	7.0	2.5	5.0	1.6	-0.5	0.4	4.0	1.3
May-18	4.2	0.5	1.0	1.0	6.4	0.2	7.0	0.2	5.1	0.3	0.5	0.1	5.6	1.3
Jun-18	5.2	0.6	3.0	0.8	6.7	0.4	7.1	0.3	5.4	0.2	1.9	1.8	7.6	1.5

*NFNE is non-food non-energy, ** SPI for quintile 1. Digits 0.0* are due to rounding off.

Table 1.1 : Period Average and YoY % Changes of Indices (Base 2007-08)						
Index	Average July - June % changes			June over June % changes		
	2017-18	2016-17	2015-16	2018	2017	2016
CPI	3.92	4.16	2.86	5.21	3.93	3.19
SPI	0.88	1.57	1.31	1.92	1.38	0.74
WPI	3.47	4.04	-1.05	7.64	3.27	0.24

Figure 2: CPI Inflation MoM, Special Indices

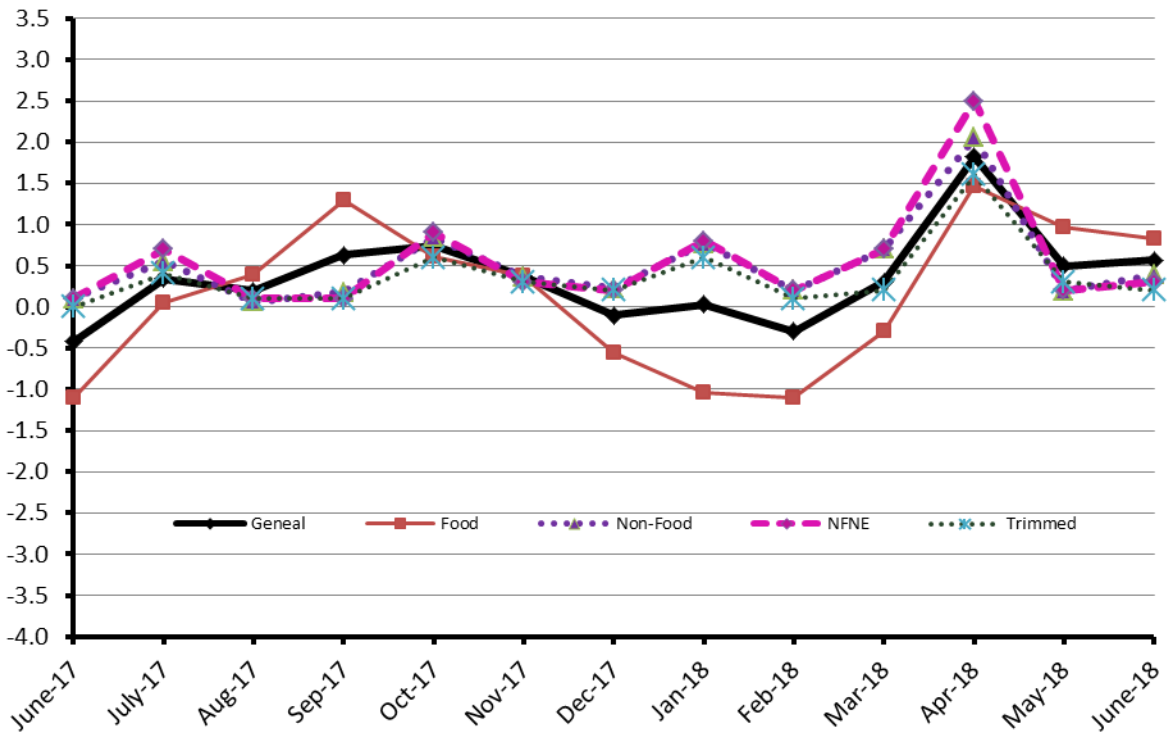
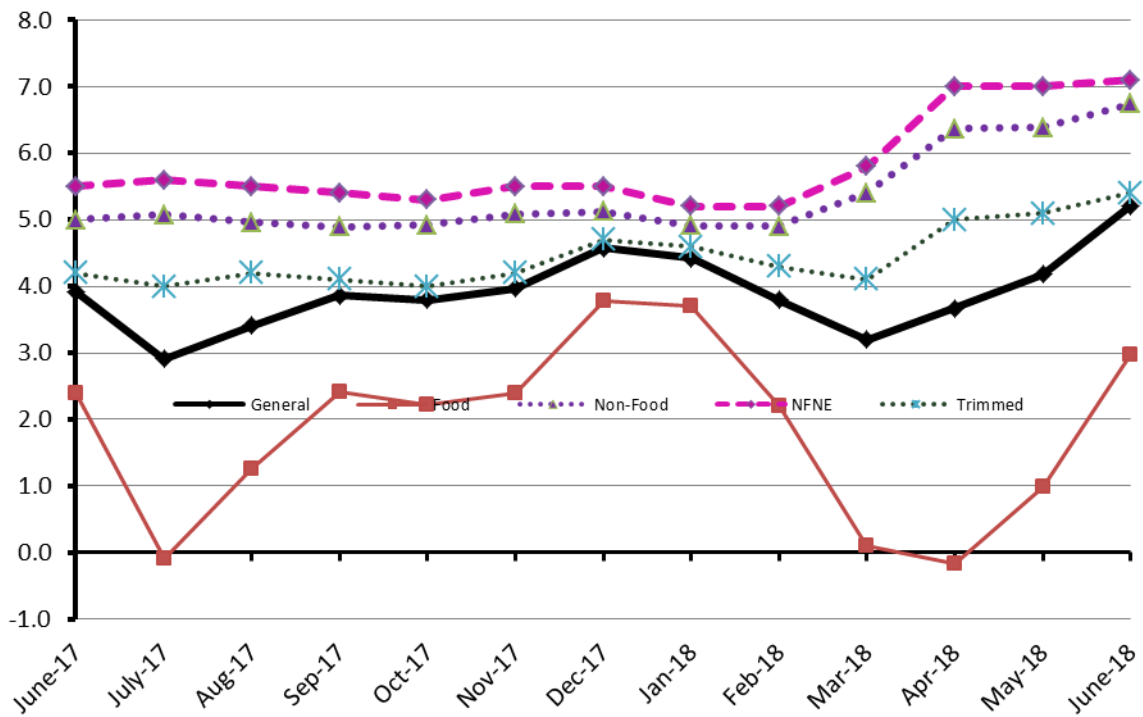


Figure 1: CPI Inflation YoY, Special Indices



II. Consumer Price Index (CPI)

The Consumer Price Index of June 2018, is increased by 0.57% over May 2018 and increased by 5.21% over corresponding month of the last year i.e. June 2017.

Table 2 : Consumer Price Index by Group of Commodities and Services (Base 2007-08)

No	Group	Group Weight (%)	Indices			% Change June 2018 Over		Impact (In % points) June 2018 Over	
			June 2018	May 2018	June 2017	May 2018	June 2017	May 2018	June 2017
	General	100.00	226.68	225.40	215.45	0.57	5.21	0.57	5.21
1.	Food & Non-alcoholic Bev.	34.83	236.58	234.40	229.18	0.93	3.23	0.34	1.20
	Non-perishable Food Items	29.84	234.57	233.97	226.09	0.26	3.75	0.08	1.17
	Perishable Food Items	4.99	248.59	236.97	247.64	4.90	0.38	0.26	0.02
2.	Alcoholic Bev. & Tobacco	1.41	314.62	315.26	324.60	-0.20	-3.07	0.00	-0.07
3.	Clothing & Footwear	7.57	253.49	252.58	237.99	0.36	6.51	0.03	0.54
4.	Housing, Water, Electricity, Gas & Fuels	29.41	207.63	207.58	196.71	0.02	5.55	0.01	1.49
5.	Furnishing & Household Equipment Maintenance	4.21	240.51	239.94	226.80	0.24	6.04	0.01	0.27
6.	Health	2.19	224.36	223.74	212.66	0.28	5.50	0.01	0.12
7.	Transport	7.20	194.64	189.16	175.87	2.90	10.67	0.17	0.63
8.	Communication	3.22	133.61	133.67	132.91	-0.04	0.53	0.00	0.01
9.	Recreation & Culture	2.02	208.37	208.32	196.15	0.02	6.23	0.00	0.11
10.	Education	3.94	281.89	281.88	249.26	0.00	13.09	0.00	0.60
11.	Restaurants & Hotels	1.23	292.90	292.77	277.76	0.04	5.45	0.00	0.09
12.	Miscellaneous	2.76	264.25	263.91	246.71	0.13	7.11	0.00	0.22

Main contributors to month-on-month and year-on-year percentage changes are given below and detail is given in Annexure A.

1. Month-on-month Top few commodities which varied from previous month are given below:-

Food Items Increased: Tomatoes (41.66%), Potatoes (6.78%), Onion (6.18%), Fresh Fruits (5.47%), Spices (1.41%), Meat (1.04%), Wheat Flour (1.00%), Wheat (0.85%), Vegetables Ghee (0.74%), Dry Fruits (0.70%), Tea (0.68%), Sugar (0.62%), Beverages (0.41%) and Bakery & Confectionary (0.31%).

Decreased: Betel Leaves & Nuts (7.68%), Eggs (3.74%), Besan (2.78%), Pulse Mash (1.66%), Pulse Masoor (1.62%), Pulse Moong (1.59%), Fresh Vegetables (1.46%), Gram Whole (1.32%), Chicken (0.98%) and Pulse Gram (0.86%).

Non-food Items Increased: Transport Services (4.02%), Motor Fuel (3.29%), Kerosene (1.97%), Footwear (1.31%), Tailoring (1.03%), Mechanical Services (0.94%), Marriage Hall charges (0.61%), Construction Input Items (0.61%), Doctor (MBBS) Clinic Fee (0.57%), House Servant (0.47%), Washing Soap & Detergents (0.41%), Construction Wage Rates (0.37%), Personal Care (0.36%), Cotton Cloth (0.35%), Household Equipment (0.23%), Readymade Garments (0.20%) and Drugs & Medicines (0.13%).

Decreased: Woolen Cloth (0.89%), Household Textile (0.32%), Motor Vehicles Accessories (0.32%), Cosmetics (0.32%), Communication & Apparatus (0.05%) and Personal Equipment (0.02%).

Year-on-Year: Top few commodities which varied from previous year i.e. June 2017 are given below:-

Food Items Increased: Betel Leaves & Nuts (190.86%), Chicken (26.20%), Tomatoes (16.77%), Onion (14.18%), Dry Fruits (10.32%), Meat (9.45%), Rice (8.83%), Sweet Meat (7.84%), Spices (5.98%), Condiments (5.86%), Jam Tomato ketchup & Pickles (5.51%), Readymade Food (5.45%), Fish (5.03%), Tea (4.90%) and Milk Products (4.87%).

Decreased: Pulse Mash (26.57%), Potatoes (25.61%), Pulse Masoor (13.02%), Pulse Gram (12.58%), Pulse Moong (12.12%), Besan (8.65%), Gur (6.42%), Sugar (6.35%), Gram Whole (6.08%), Eggs (1.82%) and Fresh Vegetables (1.69%).

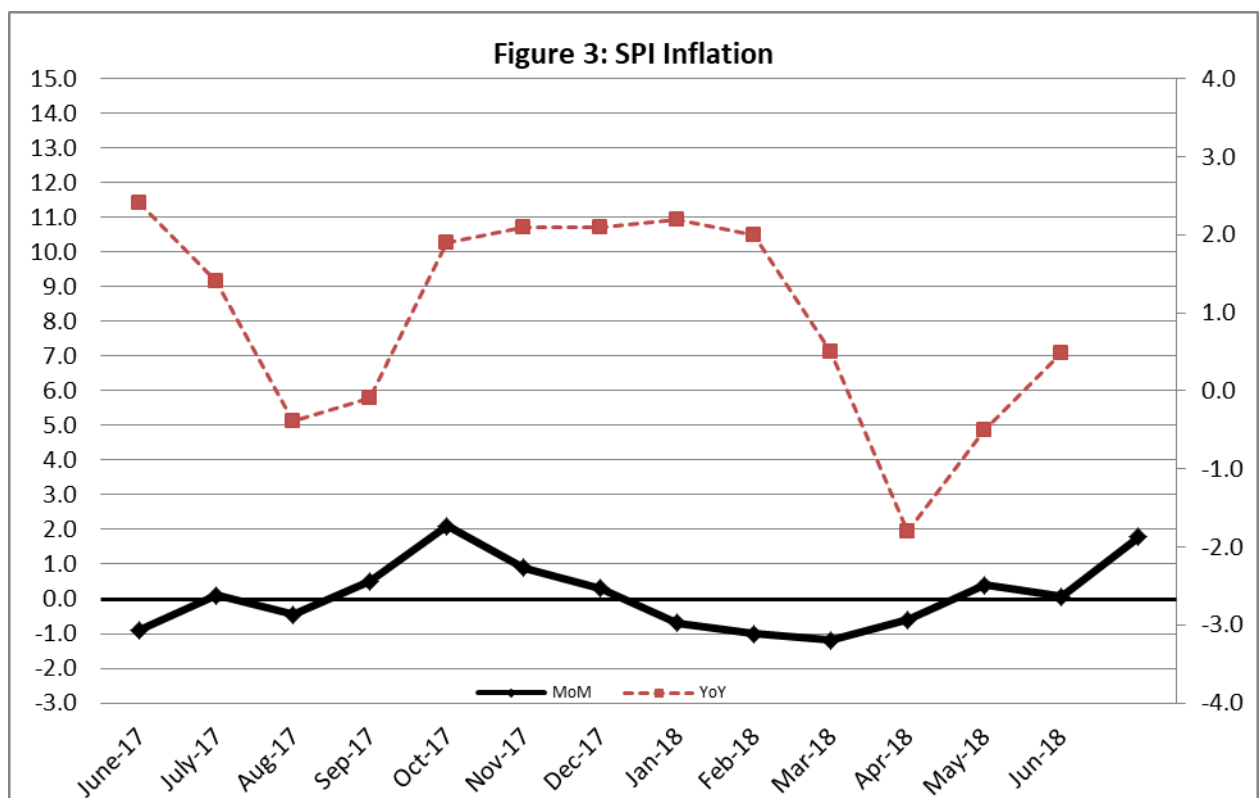
Non-food Items Increased: Kerosene Oil (34.37%), Motor Fuel (17.30%), Education (13.09%), Newspapers (12.02%), Construction Wage Rates (10.48%), Water Supply (10.21%), Personal Equipments (9.32%), Postal Services (8.90%), Medical Tests (8.74%), Cosmetics (8.60%), Stationary (8.51%), Construction Input Items (8.51%), Doctor (MBBS) Clinic Fee (8.35%), Tailoring (8.24%), Transport Services (8.17%), Furniture (7.98%), Cleaning & Laundry (7.49%), Hosiery (7.42%), Footwear (7.36%) and Household Servant (7.15%).

III. Sensitive Price Indicator

Quintile-wise percentage changes YoY and MoM are given below in Table 3. The series from June 2017 to June 2018 is also graphed below in Figure 3.

Table 3: Sensitive Price Indicator (Base 2007-08)					
Quintiles	Indices			% Change June 2018 over	
	June 2018	May 2018	June 2017	May 2018	June 2017
1	213.74	210.44	209.71	1.57	1.92
2	223.04	219.61	217.96	1.56	2.33
3	225.46	221.97	219.50	1.57	2.72
4	231.26	227.71	224.70	1.56	2.92
5	231.08	227.58	222.37	1.54	3.92
Combined	228.00	224.51	220.68	1.55	3.32

Table 3.1 : Weekly Percentage Change of SPI During June, 2018				
Quintiles	% Change with Previous week			
	7 th Jun-2018	13 th Jun-2018	21 st Jun-2018	28 th Jun-2018
Quintile 1	0.19	2.15	1.48	0.24
Combined	0.21	1.71	1.03	0.07



IV. Wholesale Price Index

The Wholesale Price Index for June, 2018 increased by 1.48% over May, 2018. It increased by 7.64% over the corresponding month of the last year. YoY and MoM movements, from June, 2017 to June, 2018 are also graphed below in Figure 4.

Table 4 : Wholesale Price Index by Group of Commodities (Base 2007-08)

No.	Group	Group Weight (%)	Indices			% Change June, 2018 over		Impact (in %age points) June, 2018 over	
			June, 2018	May, 2018	June, 2017	May, 2018	June, 2017	May, 2018	June, 2017
	General	100.00	234.40	230.98	217.77	1.48	7.64	1.48	7.64
1.	Agriculture, Forestry & Fishery Products	25.77	266.18	263.65	255.41	0.96	4.22	0.28	1.27
2.	Ores & Minerals, Electricity, Gas & Water	12.04	243.23	242.99	241.61	0.10	0.67	0.01	0.09
3.	Food Products, Beverages & Tobacco, Textiles, Apparel & Leather Products	31.11	238.47	235.86	222.73	1.11	7.07	0.35	2.25
	i. Food Products, Bev. & Tobacco	20.07	243.87	241.92	230.93	0.81	5.60	0.17	1.19
	ii. Textiles and Apparel	10.33	230.57	226.48	208.37	1.81	10.65	0.18	1.05
	iii. Leather Products	0.71	200.77	200.77	199.75	0.00	0.51	0.00	0.00
4.	Other Transportable Goods except Metal Products, Machinery & Equipment	22.37	206.51	198.63	170.67	3.97	21.00	0.76	3.68
5.	Metal Products, Machinery & Equipment	8.72	185.32	183.47	176.73	1.01	4.86	0.07	0.34

Main contributors to month-on-month and year-on-year percentage changes are given below and detail is given in Annexure B.

1. **Month-on-month** Top few commodities which varied from previous month i.e. May, 2018 are given below:-

Increased: Potatoes (10.42%), Furnace Oil (9.83%), Stimulant & Spice Crops (8.59%), Vegetables (7.95%), Diesel (7.75%), Tractors (7.47%), Towels (6.21%), Kerosene Oil (5.60%), Petrol (4.86%), Fresh Fruits (4.62%), Cement (3.92%), Cotton Yarn (2.88%), Dying Material (2.85%), Bajra (2.74%), Sugar (2.17%), Bicycles (1.90%), Readymade Garments (1.83%), Oil Cakes (1.80%), Meat (1.76%), Other Oil Seeds (1.73%), Fibre Crops (1.71%), Wheat (1.60%), Fertilizers (1.46%), Dry Fruits (1.26%), Paints & Varnishes (1.25%), Mobil Oil (1.18%), and Fridge, Washing Machine, Sew. Machine, Fans etc (1.04%).

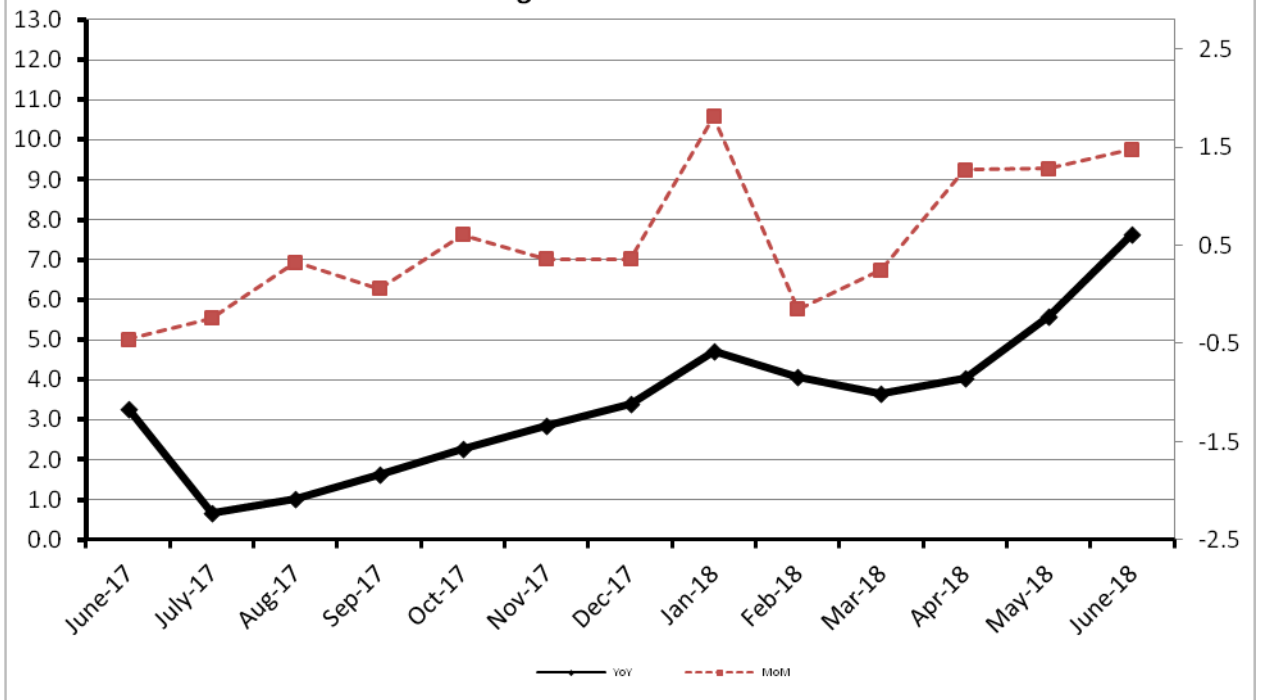
Decreased: Maize (4.79%), Eggs (3.15%) and Cotton Seeds (2.17%).

2. **Year-on-year** Top few commodities which varied from previous year i.e. June, 2017 are given below:-

Increased: Kerosene Oil (91.97%), Furnace Oil (65.62%), Diesel (46.80%), Stimulant & Spice Crops (38.43%), Jowar (37.21%), Bajra (32.57%), Poultry (30.46%), Petrol (26.34%), Dry Fruits (21.40%), Steel Bar & Sheets (20.47%), Cotton Yarn (19.38%), Hard Board (17.93%), Footwears (15.52%), Meat (13.56%), Fibre Crops (11.11%), Chemicals (10.83%), Towels (10.64) and Dried Fruits & Nuts (10.40%).

Decreased: Potatoes (34.08%), Other Cereal Flour (12.89%), Hides & Fur Skins (10.73%) and Pulses (10.49%).

Figure 4: WPI Inflation



Annexure A:CPI by Commodity Groups and Commodities (2007-08=100)

Item and Specification	Weight	Index Numbers			% Change in June 2018 over			
		Jun 2018	May 2018	Jun 2017	May 2018	Jun 2017		
<u>General</u>	100.0000	226.68	225.40	215.45	+	0.57	+	5.21
<u>Food and non-alcoholic Beverages</u>	34.8343	236.58	234.40	229.18	+	0.93	+	3.23
1 Wheat	0.3477	194.00	192.37	192.58	+	0.85	+	0.74
2 Wheat Flour	4.1648	208.16	206.09	206.83	+	1.00	+	0.64
3 Wheat Product	0.0959	212.75	212.42	214.38	+	0.16	-	0.76
4 Besan	0.1500	260.94	268.40	285.65	-	2.78	-	8.65
5 Rice	1.5821	193.75	194.33	178.03	-	0.30	+	8.83
6 Cereals	0.1563	263.90	264.30	254.31	-	0.15	+	3.77
7 Bakery & Confectionary	1.1550	226.64	225.94	218.31	+	0.31	+	3.82
8 Nimco	0.4574	259.97	259.43	254.89	+	0.21	+	1.99
9 Meat	2.4303	304.41	301.28	278.12	+	1.04	+	9.45
10 Chicken	1.3596	230.25	232.54	182.45	-	0.98	+	26.20
11 Fish	0.2970	228.77	228.10	217.81	+	0.29	+	5.03
12 Milk Fresh	6.6800	283.79	283.40	273.62	+	0.14	+	3.72
13 Milk Products	0.6338	275.29	275.28	262.51	+	0.00	+	4.87
14 Milk Powder	0.1129	244.05	243.79	233.49	+	0.11	+	4.52
15 Eggs	0.4555	182.83	189.94	186.21	-	3.74	-	1.82
16 Mustard Oil	0.0952	163.47	164.68	159.86	-	0.73	+	2.26
17 Cooking Oil	1.7538	140.80	140.71	137.77	+	0.06	+	2.20
18 Vegetable Ghee	2.0714	146.24	145.16	142.61	+	0.74	+	2.55
19 Dry Fruits	0.2543	291.36	289.34	264.11	+	0.70	+	10.32
20 Fresh Fruits	1.8649	314.88	298.56	304.46	+	5.47	+	3.42
21 Pulse Masoor	0.2712	155.50	158.06	178.77	-	1.62	-	13.02
22 Pulse Moong	0.2336	214.05	217.50	243.58	-	1.59	-	12.12
23 Pulse Mash (Washed)	0.2098	207.61	211.12	282.75	-	1.66	-	26.57
24 Pulse Gram	0.2361	253.65	255.84	290.14	-	0.86	-	12.58
25 Gram Whole	0.1616	270.48	274.09	287.99	-	1.32	-	6.08
26 Beans	0.0269	244.55	244.28	235.22	+	0.11	+	3.97
27 Potatoes	0.4598	186.58	174.73	250.82	+	6.78	-	25.61
28 Onion	0.5239	188.72	177.74	165.29	+	6.18	+	14.18
29 Tomatoes	0.4318	154.34	108.95	132.17	+	41.6	+	16.77
30 Fresh Vegetables	1.7105	236.17	239.66	240.24	-	1.46	-	1.69
31 Sugar	1.0445	191.51	190.33	204.50	+	0.62	-	6.35
32 Gur	0.0220	244.30	243.56	261.06	+	0.30	-	6.42
33 Honey	0.0446	346.18	346.18	331.39	+	0.00	+	4.46
34 SweetMeat	0.2483	270.86	270.67	251.16	+	0.07	+	7.84
35 Beverages	1.1990	232.53	231.59	227.14	+	0.41	+	2.37
36 Jam, Tomato Ketchup & Pickles	0.2454	230.49	230.45	218.46	+	0.02	+	5.51
37 Condiments	0.2656	284.91	284.34	269.13	+	0.20	+	5.86
38 Spices	0.5441	250.42	246.93	236.29	+	1.41	+	5.98
39 Tea	0.8377	304.69	302.62	290.45	+	0.68	+	4.90
<u>Alcoholic Beverages, Tobacco</u>	1.4135	314.62	315.26	324.60	-	0.20	-	3.07
40 Cigarettes	1.3906	307.85	307.50	325.84	+	0.11	-	5.52
41 Betel Leaves & Nuts	0.0229	725.90	786.31	249.57	-	7.68	+	190.86
<u>Clothing and footwear</u>	7.5708	253.49	252.58	237.99	+	0.36	+	6.51
42 Cotton Cloth	1.7286	245.84	244.99	231.26	+	0.35	+	6.30
43 Woolen Cloth	0.8759	265.97	268.37	256.38	-	0.89	+	3.74
44 Readymade Garments	0.9739	263.47	262.95	246.39	+	0.20	+	6.93
45 Woolen Readymade Garments	0.3964	266.61	266.50	258.35	+	0.04	+	3.20
46 Hosiery	0.5094	265.52	265.27	247.18	+	0.09	+	7.42

Annexure A:CPI by Commodity Groups and Commodities (2007-08=100)

Item and Specification	Weight	Index Numbers			% Change in June 2018 over		
		Jun 2018	May 2018	Jun 2017	May 2018	Jun 2017	
47 Dopatta	0.4412	262.16	261.94	244.81	+	0.08	+ 7.09
48 Cleaning and Laundry	0.2110	290.46	290.46	270.23	+	0.00	+ 7.49
49 Tailoring	0.8840	348.45	344.90	321.93	+	1.03	+ 8.24
50 Footwear	1.5504	179.75	177.43	167.43	+	1.31	+ 7.36
<u>Housing, water, Elec., Gas and other</u>	29.4149	207.63	207.58	196.71	+	0.02	+ 5.55
51 House Rent	21.8149	201.96	201.96	188.68	+	0.00	+ 7.04
52 Construction Input Items	0.5623	272.48	270.82	251.12	+	0.61	+ 8.51
53 Construction Wage Rates	0.3331	265.67	264.70	240.47	+	0.37	+ 10.48
54 Water Supply	0.4971	189.09	189.09	171.58	+	0.00	+ 10.21
55 Electricity	4.3985	238.10	238.10	238.10	+	0.00	+ 0.00
56 Gas	1.5756	158.08	158.08	158.08	+	0.00	+ 0.00
57 Kerosene Oil	0.0057	269.54	264.32	200.60	+	1.97	+ 34.37
58 Firewood Whole	0.2277	298.03	297.93	290.23	+	0.03	+ 2.69
<u>Furnishing and household</u>	4.2082	240.51	239.94	226.80	+	0.24	+ 6.04
59 Furniture	0.3315	235.86	235.84	218.43	+	0.01	+ 7.98
60 Household Textiles	0.6489	242.51	243.30	228.35	-	0.32	+ 6.20
61 Household Equipment	0.5936	190.12	189.68	182.57	+	0.23	+ 4.14
62 Utensils	0.3212	251.00	249.89	232.11	+	0.44	+ 8.14
63 Plastic Products	0.2547	225.46	225.28	210.85	+	0.08	+ 6.93
64 Washing Soaps & Detergents	0.7893	240.20	239.22	231.80	+	0.41	+ 3.62
65 Sewing Needle & Dr Cell	0.1496	219.11	219.11	206.48	+	0.00	+ 6.12
66 Household Servant	1.0432	271.59	270.32	253.47	+	0.47	+ 7.15
67 Marriage Hall Charges	0.0762	261.86	260.28	248.67	+	0.61	+ 5.30
<u>Health</u>	2.1868	224.36	223.74	212.66	+	0.28	+ 5.50
68 Drugs & Medicines	1.2667	189.52	189.28	184.69	+	0.13	+ 2.62
69 Medical Equipments	0.0080	260.09	259.89	251.21	+	0.08	+ 3.53
70 Doctor (MBBS) Clinic Fee	0.5904	304.41	302.67	280.95	+	0.57	+ 8.35
71 Medical Tests	0.3217	213.70	213.70	196.52	+	0.00	+ 8.74
<u>Transport</u>	7.2023	194.64	189.16	175.87	+	2.90	+ 10.67
72 Motor Vehicles	0.6630	187.53	187.54	175.81	-	0.01	+ 6.67
73 Motor Vehicle Accessories	0.2439	216.26	216.95	211.58	-	0.32	+ 2.21
74 Motor Fuel	3.0269	173.22	167.71	147.67	+	3.29	+ 17.30
75 Mechanical Service	0.4552	244.37	242.09	230.82	+	0.94	+ 5.87
76 Motor Vehicle Tax	0.1099	210.18	210.18	210.18	+	0.00	+ 0.00
77 Transport Services	2.7034	209.41	201.31	193.59	+	4.02	+ 8.17
<u>Communication</u>	3.2198	133.61	133.67	132.91	-	0.04	+ 0.53
78 Postal Services	0.0662	272.45	272.18	250.18	+	0.10	+ 8.90
79 Communication & Apparatus	3.1536	130.70	130.77	130.44	-	0.05	+ 0.20
<u>Recreation and culture</u>	2.0227	208.37	208.32	196.15	+	0.02	+ 6.23
80 Recreation & Culture	0.8634	134.21	134.12	129.73	+	0.07	+ 3.45
81 Text Books	0.5706	304.43	304.43	287.98	+	0.00	+ 5.71
82 Newspapers	0.1934	202.94	202.94	181.16	+	0.00	+ 12.02
83 Stationery	0.3953	234.35	234.29	215.98	+	0.03	+ 8.51
<u>Education</u>	3.9431	281.89	281.88	249.26	+	0.00	+ 13.09
84 Education	3.9431	281.89	281.88	249.26	+	0.00	+ 13.09
<u>Restaurants and hotels</u>	1.2286	292.90	292.77	277.76	+	0.04	+ 5.45
85 Readymade Food	1.2286	292.90	292.77	277.76	+	0.04	+ 5.45
<u>Misc. goods and services</u>	2.7550	264.25	263.91	246.71	+	0.13	+ 7.11
86 Personal Care	1.4935	239.22	238.37	227.42	+	0.36	+ 5.19
87 Cosmetics	0.3853	222.58	223.29	204.96	-	0.32	+ 8.60
88 Blades	0.0322	204.05	204.05	197.80	+	0.00	+ 3.16
89 Personal Equipments	0.8440	329.88	329.93	301.76	-	0.02	+ 9.32

Annexure B: Wholesale Price Indices by Major Groups & Commodities

(2007-08=100)

Item and Specification	Weight	Index Numbers			% Change in Jun 2018 over			
		Jun 18	May 18	Jun 17	May 2018	Jun 2017		
General	100.0000	234.40	230.98	217.77	+	1.48	+	7.64
Agriculture Forestry & Fisher	25.7674	266.18	263.65	255.41	+	0.96	+	4.22
001 Wheat	0.6297	197.00	193.89	197.88	+	1.60	-	0.44
002 Maize	0.6764	209.74	220.29	194.40	-	4.79	+	7.89
003 Rice	2.4413	178.97	178.91	166.29	+	0.03	+	7.63
004 Sorghum / Jowar	0.0214	289.95	292.47	211.32	-	0.86	+	37.21
005 Millet / Bajra	0.0374	216.72	210.95	163.48	+	2.74	+	32.57
006 Vegetables	1.2441	248.68	230.36	241.83	+	7.95	+	2.83
007 Fresh Fruits	1.5144	375.03	358.47	362.37	+	4.62	+	3.49
008 Dry Fruits	0.2478	287.26	283.68	236.63	+	1.26	+	21.40
009 Cotton Seeds	1.1511	267.32	273.24	277.99	-	2.17	-	3.84
010 Other Oil Seeds	0.0722	189.36	186.14	181.04	+	1.73	+	4.60
011 Edible Roots / Potatoes	0.2540	178.71	161.85	271.09	+	10.42	-	34.08
012 Stimulant & Spice Crops	0.1634	307.03	282.74	221.79	+	8.59	+	38.43
013 Pulses	0.4901	238.72	239.75	266.71	-	0.43	-	10.49
014 Sugar Crops	1.0725	257.62	257.62	268.94	+	0.00	-	4.21
015 Fibre Crops	5.3169	243.36	239.28	219.02	+	1.71	+	11.11
016 Unmanufactured Tobacco	0.0742	309.38	309.16	291.25	+	0.07	+	6.22
017 Poultry	0.5633	251.13	249.20	192.50	+	0.77	+	30.46
018 Raw Milk from Bovine Animals	7.0279	283.49	283.49	268.56	+	0.00	+	5.56
019 Eggs	0.5034	188.20	194.33	182.17	-	3.15	+	3.31
020 Raw Animal Materials / Wool	0.0351	176.84	176.72	176.22	+	0.07	+	0.35
021 Hides & Fur Skins, Raw	0.4834	95.00	94.24	106.42	+	0.81	-	10.73
022 Fuel Wood in Logs	0.0179	283.56	283.56	279.63	+	0.00	+	1.41
023 Fish Live Fresh or Chilled	1.7295	451.10	451.10	466.43	+	0.00	-	3.29
Ores/Minerals, Elec., Gas & W	12.0389	243.23	242.99	241.61	+	0.10	+	0.67
024 Coal not Agglomerated	0.7508	155.29	155.29	155.29	+	0.00	+	0.00
025 Natural Gas Liquefied	5.7385	211.61	211.12	208.46	+	0.23	+	1.51
026 Salt & Pure Sodium Chloride	0.0584	269.74	269.74	246.13	+	0.00	+	9.59
027 Electrical Energy	5.4912	288.00	288.00	288.00	+	0.00	+	0.00
Food, Beverages, Tobacco, Textil	31.1122	238.47	235.86	222.73	+	1.11	+	7.07
Food Products, Beverages &	20.0718	243.87	241.92	230.93	+	0.81	+	5.60
028 Meat of Animals	3.4559	331.21	325.47	291.67	+	1.76	+	13.56
029 Vegetables & Fruit Juice	0.0058	226.66	226.66	224.14	+	0.00	+	1.12
030 Dried Fruits & Nuts	0.1733	296.19	295.32	268.30	+	0.29	+	10.40
031 Fruit Juices	0.3880	185.75	185.23	181.82	+	0.28	+	2.16
032 Vegetable Oils Refined	1.9242	158.88	158.97	155.51	-	0.06	+	2.17
033 Vegetable Ghee	1.5632	129.89	129.83	126.16	+	0.05	+	2.96
034 Oil Cakes	0.9611	236.30	232.12	227.93	+	1.80	+	3.67
035 Processed Liquid Milk	4.4437	289.96	289.45	266.86	+	0.18	+	8.66
036 Milk & Cream in Solid Form	0.0316	223.82	223.82	219.35	+	0.00	+	2.04
037 Ice Cream	0.0047	266.02	266.02	261.28	+	0.00	+	1.81
038 Dairy Products N.E.C	0.0117	279.94	278.71	258.19	+	0.44	+	8.42
039 Wheat Flour	2.3034	189.88	188.12	189.57	+	0.94	+	0.16
040 Other Cereal Flour	0.0604	215.32	215.85	247.19	-	0.25	-	12.89
041 Sugar Refined	1.7975	200.66	196.39	210.04	+	2.17	-	4.47
042 Chocolate	0.0139	100.00	100.00	100.00	+	0.00	+	0.00
043 Sugar Confectionary	0.0738	127.55	127.55	128.44	+	0.00	-	0.69
044 Coffee & Tea	0.7303	275.43	274.13	263.86	+	0.47	+	4.38
045 Spices	0.1449	202.25	202.25	189.72	+	0.00	+	6.60
046 Other Food Products	0.0336	294.50	294.50	294.01	+	0.00	+	0.17
047 Mineral Water	0.0207	211.50	211.50	198.57	+	0.00	+	6.51
048 Beverages	0.6303	173.22	173.22	172.03	+	0.00	+	0.69
049 Tobacco Products	1.2998	318.37	318.37	318.37	+	0.00	+	0.00
Textiles & Apparels	10.3289	230.57	226.48	208.37	+	1.81	+	10.65
050 Cotton Yarn	5.2491	242.86	236.05	203.44	+	2.88	+	19.38
051 Nylon Yarn	0.1719	143.99	143.99	143.99	+	0.00	+	0.00
052 Blended Yarn	0.1689	196.66	195.38	182.11	+	0.66	+	7.99
053 Woven Fabrics	0.0128	321.49	321.49	316.28	+	0.00	+	1.65
054 Cotton Fabrics	0.6343	220.18	219.99	211.60	+	0.09	+	4.05
055 Other Fabrics	1.1016	227.85	227.85	227.16	+	0.00	+	0.30
056 Silk & Reyon Fabrics	0.7350	189.05	188.95	188.89	+	0.05	+	0.08
057 Towels	0.1235	305.52	287.65	276.14	+	6.21	+	10.64
058 Blankets	0.0029	265.03	265.03	247.52	+	0.00	+	7.07
059 Bed Sheets	0.0913	256.87	256.87	256.87	+	0.00	+	0.00

Annexure B: Wholesale Price Indices by Major Groups & Commodities

(2007-08=100)

Item and Specification	Weight	Index Numbers			% Change in Jun 2018 over	
		Jun 18	May 18	Jun 17	May 2018	Jun 2017
060 Quilts	0.0019	222.32	222.32	203.79	+ 0.00	+ 9.09
061 Woolen Carpets	0.0383	196.43	196.43	196.43	+ 0.00	+ 0.00
062 Synthetic Carpets	0.0566	130.95	130.95	130.95	+ 0.00	+ 0.00
063 Hosiery Products	0.8832	250.36	250.36	243.31	+ 0.00	+ 2.90
064 Readymade Garments	1.0576	204.85	201.16	201.37	+ 1.83	+ 1.73
Leather Products	0.7115	200.77	200.77	199.75	+ 0.00	+ 0.51
065 Leather Without Hair	0.2973	212.68	212.68	221.97	+ 0.00	- 4.19
066 Other Leather N.E.C	0.2567	207.02	207.02	207.31	+ 0.00	- 0.14
067 Footwears	0.1575	168.09	168.09	145.51	+ 0.00	+ 15.52
Other Transportable Goods	22.3659	206.51	198.63	170.67	+ 3.97	+ 21.00
068 Timber	0.0165	237.00	237.00	231.53	+ 0.00	+ 2.36
069 Printing Paper	0.4279	171.07	170.68	165.67	+ 0.23	+ 3.26
070 Hard Board	0.1579	260.42	260.42	220.83	+ 0.00	+ 17.93
071 Coke	0.2797	163.45	163.45	163.45	+ 0.00	+ 0.00
072 Motor Spirit	1.5336	155.34	148.14	122.95	+ 4.86	+ 26.34
073 Diesel Oil	5.2664	227.66	211.29	155.08	+ 7.75	+ 46.80
074 Kerosine Oil	0.2151	224.83	212.90	117.12	+ 5.60	+ <u>91.97</u>
075 Furnace Oil	3.2664	162.84	148.26	98.32	+ 9.83	+ <u>65.62</u>
076 Mobil Oil	0.7114	203.46	201.08	201.29	+ 1.18	+ 1.08
077 Chemicals	1.7720	191.65	191.65	172.93	+ 0.00	+ 10.83
078 Dyeing Material	0.1539	150.72	146.55	146.55	+ 2.85	+ 2.85
079 Fertilizers	2.8657	232.29	228.94	216.40	+ 1.46	+ 7.34
080 Pesticides	0.2763	312.26	312.26	304.43	+ 0.00	+ 2.57
081 Insecticides	0.1276	142.29	142.19	141.88	+ 0.07	+ 0.29
082 Paints & Varnishes	0.1916	304.87	301.12	294.51	+ 1.25	+ 3.52
083 Medicines	1.1428	177.06	177.04	174.00	+ 0.01	+ 1.76
084 Soaps & Detergents	0.8168	190.80	190.80	191.14	+ 0.00	- 0.18
085 Auto Tyres	0.2703	177.14	177.11	177.07	+ 0.02	+ 0.04
086 Plastic Products	0.4550	240.04	240.04	225.88	+ 0.00	+ 6.27
087 Glass sheets	0.2089	302.27	302.27	298.97	+ 0.00	+ 1.10
088 Other Glass Articles	0.1635	318.10	318.10	317.24	+ 0.00	+ 0.27
089 Ceramics & Sanitary Fixture	0.0244	236.41	236.41	233.92	+ 0.00	+ 1.06
090 Bricks, Blocks & Tiles	0.1566	222.34	221.69	220.73	+ 0.29	+ 0.73
091 Cement	1.8145	232.31	223.54	215.12	+ 3.92	+ 7.99
092 Bed Foam	0.0006	175.33	175.33	170.00	+ 0.00	+ 3.14
093 Matches	0.0505	171.36	171.36	171.36	+ 0.00	+ 0.00
Metal Product, Machinery & Eq	8.7156	185.32	183.47	176.73	+ 1.01	+ 4.86
094 Pig Iron	0.0593	128.97	128.97	128.97	+ 0.00	+ 0.00
095 Steel Bar & Sheets	1.4022	164.94	163.92	136.91	+ 0.62	+ 20.47
096 Pipe Fittings	0.0780	215.66	215.66	215.66	+ 0.00	+ 0.00
097 Steel Products	0.3879	177.24	177.24	177.56	+ 0.00	- 0.18
098 Engines & Motors	0.0046	116.98	116.98	116.98	+ 0.00	+ 0.00
099 Vacuum Pumps	0.0155	123.69	123.69	123.69	+ 0.00	+ 0.00
100 Air Conditioners	0.0049	203.80	203.80	200.10	+ 0.00	+ 1.85
101 Cultivators	0.0551	190.66	190.66	190.66	+ 0.00	+ 0.00
102 Chuff Cutter	0.1293	153.46	153.46	153.46	+ 0.00	+ 0.00
103 Tractors	0.0028	216.82	201.75	201.75	+ 7.47	+ 7.47
104 Lathe Machines	0.0525	241.06	241.06	241.06	+ 0.00	+ 0.00
105 Concrete Mixture	0.0107	138.83	138.83	138.83	+ 0.00	+ 0.00
106 Fridge,WashM,SewM,Fans,Iron	1.1645	228.70	226.35	214.85	+ 1.04	+ 6.45
107 Electric Wires	0.0912	208.22	208.22	204.51	+ 0.00	+ 1.81
108 Lighting Equipments	1.4431	174.04	174.04	170.73	+ 0.00	+ 1.94
109 Radio & Television	0.1843	140.42	140.42	140.42	+ 0.00	+ 0.00
110 Motor Vehicles	0.0244	211.00	211.00	195.36	+ 0.00	+ 8.01
111 Motorcycles	0.2570	133.88	133.88	125.89	+ 0.00	+ 6.35
112 Bicycles	3.3483	191.22	187.65	187.65	+ 1.90	+ 1.90