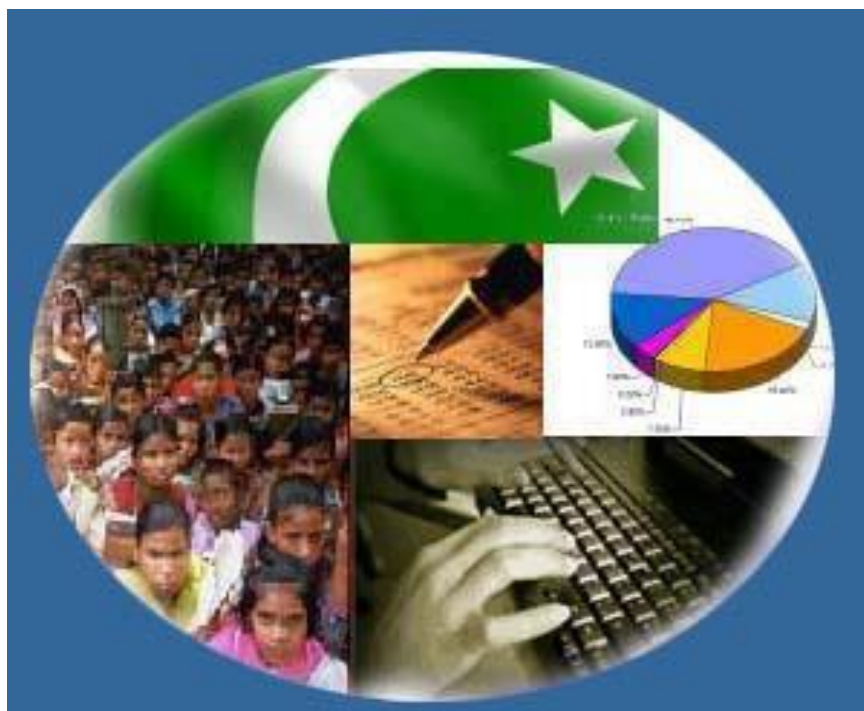




Monthly Review on Price Indices



April, 2018
(Base 2007-08)

Government of Pakistan
Ministry Of Statistics
Pakistan Bureau of Statistics
Islamabad

Inflation in Brief

1. CPI inflation General increased by 3.7% on year-on-year basis in April 2018 as compared to an increase of 3.2% in the previous month and 4.8% in April 2017. On month-on-month basis, it increased by 1.8% in April 2018 as compared to an increase of 0.3% in the previous month and increase of 1.4% in April 2017.
2. Core inflation measured by non-food non-energy CPI (Core NFNE) increased by 7.0% on (YoY) basis in April 2018 as compared to an increase of 5.8% in the previous month and 5.5% in April 2017. On (MoM) basis, it increased by 2.5% in April 2018 as compared to increase of 0.7% in previous month, and an increase of 1.3% in corresponding month of last year i.e. April 2017.
3. Core inflation, measured by 20% weighted trimmed mean CPI (Core Trimmed) increased by 5.0% on (YoY) basis in April 2018 as compared to 4.1% in the previous month and by 4.8% in April 2017. On (MoM) basis, it increased by 1.6% in April 2018 as compared to an increase of 0.2% in the previous month and an increase of 0.8% in corresponding month of last year i.e. April 2017.
4. SPI inflation on YoY decreased by 0.5% in April 2018 as compared to a decrease of 1.8% a month earlier and an increase of 2.3% in April 2017. On MoM basis, it increased by 0.4% in April 2018 as compared to a decrease of 0.6% a month earlier and a decrease of 0.9% in April 2017.
5. WPI inflation on YoY basis increased by 4.0% in April 2018 as compared to an increase of 3.6% a month earlier and an increase of 6.0% in April 2017. WPI inflation on MoM basis increased by 1.3% in April 2018 as compared to an increase of 0.2% a month earlier and an increase of 0.9% in corresponding month of last year i.e. April 2017.
6. Figures 1 and 2 show graphically the data of Table 1. Table 1.1 shows "Period Average" and "YoY" percent changes in indices of three years.

Table 1: Inflation (%) (Base 2007-08)														
Period	CPI						Core Inflation				SPI**		WPI	
	General		Food		Non-food		NFNE*		Trimmed		YoY	MoM	YoY	MoM
	YoY	MoM	YoY	MoM	YoY	MoM	YoY	MoM	YoY	MoM				
Mar-17	4.9	0.8	5.0	1.9	4.9	0.1	5.3	0.1	4.5	0.2	3.1	1.8	6.4	0.7
Apr-17	4.8	1.4	4.4	1.7	5.1	1.2	5.5	1.3	4.8	0.8	2.3	-0.9	6.0	0.9
May-17	5.0	0.0	4.9	-0.2	5.1	0.2	5.5	0.2	4.8	0.2	2.4	-0.9	5.2	-0.2
Jun-17	3.9	-0.4	2.4	-1.1	5.0	0.1	5.5	0.1	4.2	0.0	1.4	0.1	3.3	-0.5
Jul-17	2.9	0.3	-0.1	0.0	5.1	0.5	5.6	0.7	4.0	0.4	-0.4	-0.5	0.7	-0.2
Aug-17	3.4	0.2	1.3	0.4	5.0	0.1	5.5	0.1	4.2	0.1	-0.1	0.5	1.0	0.3
Sep-17	3.9	0.6	2.4	1.3	4.9	0.2	5.4	0.1	4.10	0.1	1.9	2.1	1.6	0.1
Oct-17	3.8	0.7	2.2	0.6	4.9	0.8	5.3	0.9	4.0	0.6	2.1	0.9	2.3	0.6
Nov-17	4.0	0.4	2.4	0.4	5.1	0.4	5.5	0.3	4.2	0.3	2.1	0.3	2.9	0.4
Dec-17	4.6	-0.1	3.8	-0.6	5.1	0.2	5.5	0.2	4.7	0.2	2.2	-0.7	3.4	0.4
Jan-18	4.4	0.0	3.7	-1.0	4.9	0.8	5.2	0.8	4.6	0.6	2.0	-1.0	4.7	1.8
Feb-18	3.8	-0.3	2.2	-1.1	4.9	0.2	5.2	0.2	4.3	0.1	0.5	-1.2	4.1	-0.1
Mar-18	3.2	0.3	0.1	-0.3	5.4	0.7	5.8	0.7	4.1	0.2	-1.8	-0.6	3.6	0.2
Apr-18	3.7	1.8	-0.2	1.5	6.4	2.1	7.0	2.5	5.0	1.6	-0.5	0.4	4.0	1.3

*NFNE is non-food non-energy, ** SPI for quintile 1. Digits 0.0* are due to rounding off.

Table 1.1 : Period Average and YoY % Changes of Indices (Base 2007-08)						
Index	Averages July-April % Changes			April over April % Changes		
	2017-18	2016-17	2015-16	2018	2017	2016
CPI	3.77	4.09	2.79	3.68	4.78	4.17
SPI	0.81	1.51	1.44	-0.47	2.30	2.91
WPI	2.83	4.00	-1.30	4.04	5.97	0.59

Figure 2: CPI Inflation MoM, Special Indices

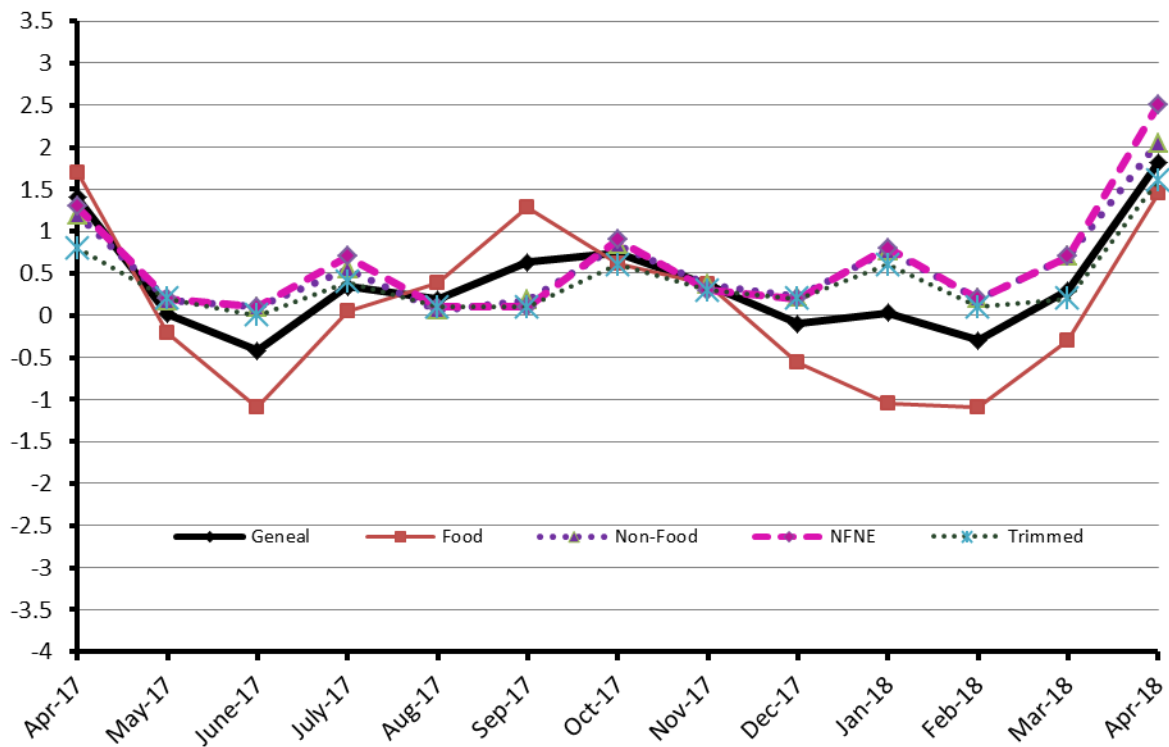
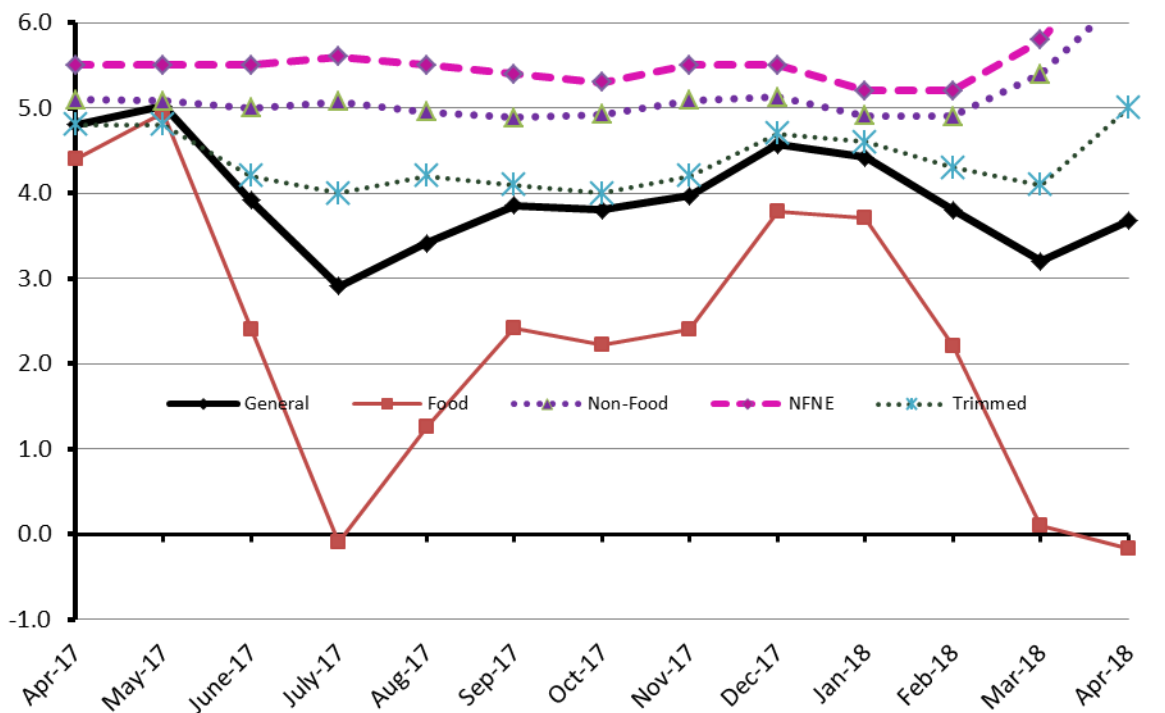


Figure 1: CPI Inflation YoY, Special Indices



II. Consumer Price Index (CPI)

The Consumer Price Index of April 2018, is increased by 1.82% over March 2018 and increased by 3.68% over corresponding month of the last year i.e. April 2017.

Table 2 : Consumer Price Index by Group of Commodities and Services (Base 2007-08)

No	Group	Group Weight (%)	Indices			% Change April 2018 Over		Impact (In % points) April 2018 Over	
			Apr 2018	Mar 2018	Apr 2017	Mar 2018	Apr 2017	Mar 2018	Apr 2017
	General	100.00	224.25	220.25	216.30	1.82	3.68	1.82	3.68
1.	Food & Non-alcoholic Bev.	34.83	231.90	228.39	230.25	1.54	0.72	0.55	0.27
	Non-perishable Food Items	29.84	232.93	231.03	226.72	0.82	2.74	0.26	0.86
	Perishable Food Items	4.99	225.72	212.62	251.31	6.16	-10.18	0.30	-0.59
2.	Alcoholic Bev. & Tobacco	1.41	317.70	316.60	382.78	0.35	-17.00	0.01	-0.43
3.	Clothing & Footwear	7.57	252.06	245.80	235.61	2.55	6.98	0.22	0.58
4.	Housing, Water, Electricity, Gas & Fuels	29.41	207.35	202.71	196.62	2.29	5.46	0.62	1.46
5.	Furnishing & Household Equipment Maintenance	4.21	239.29	234.67	224.95	1.97	6.37	0.09	0.28
6.	Health	2.19	223.08	221.26	212.43	0.82	5.01	0.02	0.11
7.	Transport	7.20	187.48	186.98	176.33	0.27	6.32	0.02	0.37
8.	Communication	3.22	133.67	133.37	132.87	0.22	0.60	0.00	0.01
9.	Recreation & Culture	2.02	207.96	200.38	196.02	3.78	6.09	0.07	0.11
10.	Education	3.94	281.57	275.17	249.20	2.33	12.99	0.11	0.59
11.	Restaurants & Hotels	1.23	291.05	287.84	275.88	1.12	5.50	0.02	0.09
12.	Miscellaneous	2.76	263.59	256.35	244.71	2.82	7.72	0.09	0.24

Main contributors to month-on-month and year-on-year percentage changes are given below and detail is given in Annexure A.

1. Month-on-month Top few commodities which varied from previous month are given below:-

Food Items Increased: Fresh Vegetables (15.29%), Tomatoes (8.47%), Fresh Fruits (5.76%), Chicken (4.34%), Sweet Meat (4.01%), Sugar (3.29%), Betel Leaves & Nuts (2.10%), Meat (1.78%), Spices (1.68%), Condiments (1.66%), Dry Fruits (1.54%), Jam & Pickles (1.47%), Fish (1.46%), Beverages (1.42%), Tea (1.36%) and Milk Powder (1.20%).

Decreased: Onion (10.66%), Potatoes (7.19%), Eggs (5.06%), Wheat (2.79%), Besan (1.38%), Pulse Mash (1.37%), Gram Whole (1.33%), Pulse Masoor (1.13%), Wheat Flour (0.69%) and Wheat Product (0.50%).

Non-food Items Increased: Cosmetics (6.53%), Footwear (5.6%), Text Books (5.53%), Stationary (5.10%), Postal Services (5.09%), Personal Equipment (3.66%), Medical Tests (3.19%), Furniture (3.09%), House Rent (3.06%), Sewing Needle & Dry Cell (2.64%), Readymade Garments (2.47%), Cotton Cloth (2.41%), Utensils (2.40%), Plastic Products (2.38%), Education (2.33%), Household Textiles (2.31%), Construction Wage Rates (2.25%) and Tailoring (2.08%).

Decreased: Motor Fuel (1.47%) and Firewood Whole (0.30%).

Year-on-Year: Top few commodities which varied from previous year i.e. April 2017 are given below:-

Food Items Increased: Betel Leaves & Nuts (281.64%), Rice (11.18%), Meat (9.84%), Sweet Meat (7.86%), Dry Fruits (6.51%), Condiments (5.77%), Beans (5.61%), Milk Products (5.56%), Readymade Food (5.50%), Jam & Pickles (5.39%), Tea (4.80%), Fish (4.57%), Beverages (4.54%), Eggs (4.50%), Mustard Oil (4.33%), Chicken (4.14%), Milk Fresh (3.78%) and Bakery & Confectionary (3.42%).

Decreased: Tomatoes (47.53%), Pulse Mash (23.25%), Potatoes (23.14%), Cigarettes (20.15%), Fresh Vegetables (14.30%), Pulse Masoor (13.07%), Sugar (12.01%), Besan (11.09%), Pulse Moong (10.76%) and Pulse Gram (10.02%).

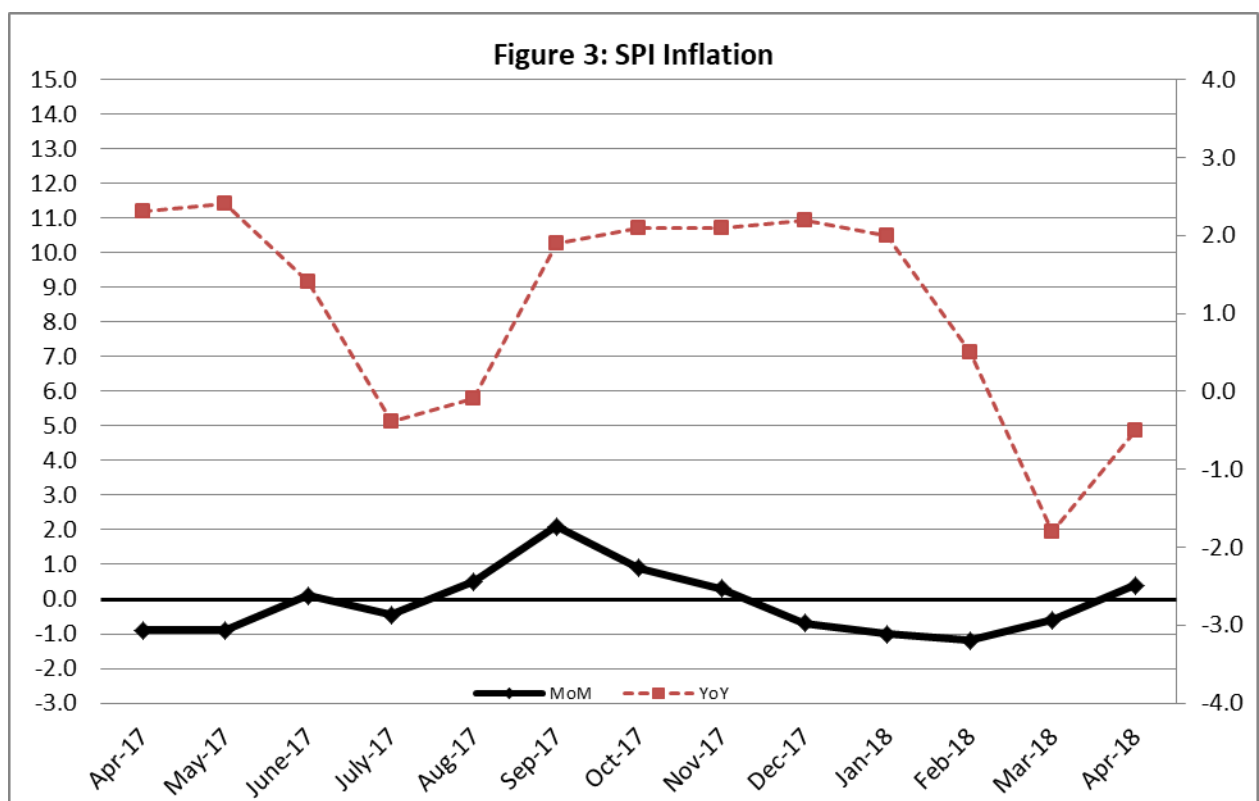
Non-food Items Increased: Kerosene Oil (30.66%), Education (12.99%), Newspapers (12.12%), Construction Wage Rates (10.57%), Motor Fuel (10.56%), Personal Equipments (10.49%), Tailoring (9.72%), Cleaning & Laundry (9.25%), Postal Services (9.24%), Medical Tests (9.15%), Cosmetics (9.02%), Stationary (8.32%), Furniture (8.30%), Motor Vehicles (8.19%), Household Servant (8.14%) and Readymade Garments (8.0%).

III. Sensitive Price Indicator

Quintile-wise percentage changes YoY and MoM are given below in Table 3. The series from April 2017 to April 2018 is also graphed below in Figure 3.

Table 3: Sensitive Price Indicator (Base 2007-08)					
Quintiles	Indices			% Change April 2018 over	
	April 2018	March 2018	April 2017	March 2018	April 2017
1	210.31	209.37	211.31	0.45	-0.47
2	219.00	217.75	219.28	0.57	-0.13
3	220.99	219.57	220.76	0.65	0.10
4	226.29	224.75	226.03	0.69	0.12
5	225.59	224.00	223.82	0.71	0.79
Combined	223.13	221.67	222.07	0.66	0.48

Table 3.1 : Weekly Percentage Change of SPI During March-18				
Quintiles	% Change with Previous week			
	5 th Apr-2018	12 th Apr-2018	19 th Apr-2017	26 th Apr-2018
Quantile 1	0.60	0.22	-0.02	-0.09
Combined	0.64	0.36	0.04	-0.07



IV. Wholesale Price Index

The Wholesale Price Index for April, 2018 increased by 1.27% over March, 2018. It increased by 4.04% over the corresponding month of the last year. YoY and MoM movements, from April, 2017 to April, 2018 are also graphed below in Figure 4.

Table 4 : Wholesale Price Index by Group of Commodities (Base 2007-08)

No.	Group	Group Weight (%)	Indices			% Change April, 2018 over		Impact (in %age points) April, 2018 over	
			Apr. 2018	Mar. 2018	Apr. 2017	Mar. 2018	Apr. 2017	Mar. 2018	Apr. 2017
	General	100.00	228.07	225.22	219.22	1.27	4.04	1.27	4.04
1.	Agriculture, Forestry & Fishery Products	25.77	260.48	254.55	254.52	2.33	2.34	0.68	0.70
2.	Ores & Minerals, Electricity, Gas & Water	12.04	242.84	242.92	242.28	-0.03	0.23	0.00	0.03
3.	Food Products, Beverages & Tobacco, Textiles, Apparel & Leather Products	31.11	233.13	231.06	227.31	0.90	2.56	0.29	0.82
	i. Food Products, Bev. & Tobacco	20.07	240.00	238.95	238.72	0.44	0.54	0.09	0.12
	ii. Textiles and Apparel	10.33	222.05	218.16	207.05	1.78	7.24	0.18	0.71
	iii. Leather Products	0.71	199.90	195.77	199.75	2.11	0.08	0.01	0.00
4.	Other Transportable Goods except Metal Products, Machinery & Equipment	22.37	193.68	191.75	171.61	1.01	12.86	0.19	2.25
5.	Metal Products, Machinery & Equipment	8.72	182.01	179.07	176.25	1.64	3.27	0.11	0.23

Main contributors to month-on-month and year-on-year percentage changes are given below and detail is given in Annexure B.

1. **Month-on-month** Top few commodities which varied from previous month i.e. March, 2018 are given below:-

Increased: Vegetables (21.50%), Hard Board (15.74%), Footwear (12.81%), Steel Bar & Sheets (7.55%), Cements (6.12%), Plastic Products (5.87%), Motorcycles (5.77%), Fresh Fruits (5.75%), Poultry (5.17%), Stimulant & Spice Crops (4.80%), Furnace Oil (4.77%), Bajra (4.69%), Fibre Crops (3.27%), Sugar (3.22%), Cotton Yarn (3.15%), Other Oil Seeds (2.82%), Maize (2.73%), Dry Fruits (2.23%), Fresh Milk (1.91%), Blended Yarn (1.78%), Jowar (1.76%), Coffee & Tea (1.67%), Fridge, Washing Machines, Iron etc (1.62%), Chemicals (1.59%) and Lighting Equip. (1.55%).

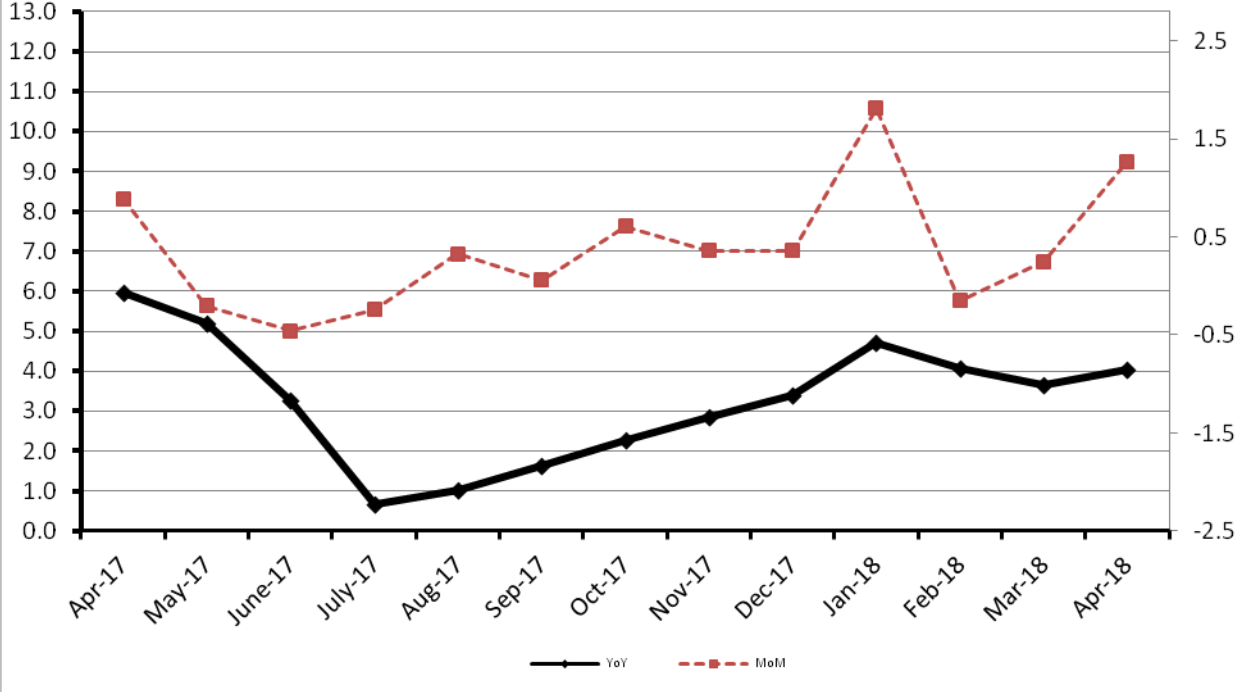
Decreased: Potatoes (10.13%), Eggs (6.50%), Hides & Fur Skins (3.25%), Wheat (2.73%), Petrol (2.35%) Wheat Flour (1.82%) and Diesel (1.07%).

2. **Year-on-year** Top few commodities which varied from previous year i.e. April, 2017 are given below:-

Increased: Kerosene Oil (74.00%), Furnace Oil (33.81%), Stimulant & Spice Crops (31.84%), Diesel (29.66%), Hard Board (17.93%), Steel Bar & Sheets (17.62%), Bajra (17.07%), Petrol (16.23%), Dry Fruits (16.11%), Footwear (12.81%), Cotton Yarn (12.79%), Chemicals (12.03%), Eggs (11.29%), Fibre Crops (10.65%), Meat of Animals (10.60%), Dried Fruits & Nuts (10.40%), Unmanufactured Tobacco (10.31%), Motor Vehicles (10.25%), Salt & Pure Sodium Chloride (10.07%) and Jowar (10.00%).

Decreased: Potatoes (32.35%), Tobacco Products (28.59%), Vegetables (23.28%), Other Cereal Flour (12.09%), Sugar (11.47%) and Pulses (10.11%).

Figure 4: WPI Inflation



Annexure A:CPI by Commodity Groups and Commodities (2007-08=100)

Item and Specification	Weight	Index Numbers			% Change in Apr 2018 over			
		Apr 2018	Mar 2018	Apr 2017	Mar 2018	Apr 2017		
<i>General</i>	100.0000	224.25	220.25	216.30	+	1.82	+	3.68
<i>Food and non-alcoholic Beverages</i>	34.8343	231.90	228.39	230.25	+	1.54	+	0.72
1 Wheat	0.3477	198.93	204.63	203.46	-	2.79	-	2.23
2 Wheat Flour	4.1648	210.07	211.52	211.07	-	0.69	-	0.47
3 Wheat Product	0.0959	213.09	214.16	216.66	-	0.50	-	1.65
4 Besan	0.1500	263.89	267.57	296.79	-	1.38	-	11.09
5 Rice	1.5821	193.68	192.45	174.21	+	0.64	+	11.18
6 Cereals	0.1563	261.81	259.04	254.41	+	1.07	+	2.91
7 Bakery & Confectionary	1.1550	225.07	224.66	217.62	+	0.18	+	3.42
8 Nimco	0.4574	258.88	258.14	253.75	+	0.29	+	2.02
9 Meat	2.4303	298.76	293.53	271.99	+	1.78	+	9.84
10 Chicken	1.3596	216.82	207.80	208.20	+	4.34	+	4.14
11 Fish	0.2970	227.59	224.31	217.64	+	1.46	+	4.57
12 Milk Fresh	6.6800	281.77	279.50	271.51	+	0.81	+	3.78
13 Milk Products	0.6338	274.91	272.17	260.42	+	1.01	+	5.56
14 Milk Powder	0.1129	241.94	239.08	234.56	+	1.20	+	3.15
15 Eggs	0.4555	188.00	198.03	179.91	-	5.06	+	4.50
16 Mustard Oil	0.0952	164.66	162.97	157.82	+	1.04	+	4.33
17 Cooking Oil	1.7538	140.48	139.23	137.69	+	0.90	+	2.03
18 Vegetable Ghee	2.0714	144.61	143.79	143.12	+	0.57	+	1.04
19 Dry Fruits	0.2543	284.15	279.84	266.78	+	1.54	+	6.51
20 Fresh Fruits	1.8649	281.64	266.29	275.79	+	5.76	+	2.12
21 Pulse Masoor	0.2712	158.21	160.02	181.99	-	1.13	-	13.07
22 Pulse Moong	0.2336	218.42	218.82	244.75	-	0.18	-	10.76
23 Pulse Mash (Washed)	0.2098	214.66	217.65	279.70	-	1.37	-	23.25
24 Pulse Gram	0.2361	259.25	259.27	288.13	-	0.01	-	10.02
25 Gram Whole	0.1616	277.17	280.90	283.71	-	1.33	-	2.31
26 Beans	0.0269	244.53	245.21	231.55	-	0.28	+	5.61
27 Potatoes	0.4598	148.56	160.07	193.29	-	7.19	-	23.14
28 Onion	0.5239	182.43	204.19	199.32	-	10.6	-	8.47
29 Tomatoes	0.4318	105.70	97.45	201.46	+	8.47	-	47.53
30 Fresh Vegetables	1.7105	233.55	202.58	272.52	+	15.2	-	14.30
31 Sugar	1.0445	190.58	184.51	216.60	+	3.29	-	12.01
32 Gur	0.0220	240.34	238.44	258.74	+	0.80	-	7.11
33 Honey	0.0446	341.92	341.03	331.39	+	0.26	+	3.18
34 SweetMeat	0.2483	267.41	257.09	247.92	+	4.01	+	7.86
35 Beverages	1.1990	230.60	227.38	220.59	+	1.42	+	4.54
36 Jam, Tomato Ketchup & Pickles	0.2454	228.80	225.48	217.10	+	1.47	+	5.39
37 Condiments	0.2656	283.14	278.51	267.70	+	1.66	+	5.77
38 Spices	0.5441	243.77	239.75	236.82	+	1.68	+	2.93
39 Tea	0.8377	300.65	296.63	286.87	+	1.36	+	4.80
<i>Alcoholic Beverages, Tobacco</i>	1.4135	317.70	316.60	382.78	+	0.35	-	17.00
40 Cigarettes	1.3906	307.42	306.62	385.02	+	0.26	-	20.15
41 Betel Leaves & Nuts	0.0229	941.86	922.46	246.79	+	2.10	+	281.64
<i>Clothing and footwear</i>	7.5708	252.06	245.80	235.61	+	2.55	+	6.98
42 Cotton Cloth	1.7286	243.75	238.01	228.50	+	2.41	+	6.67
43 Woolen Cloth	0.8759	268.30	264.09	255.67	+	1.59	+	4.94
44 Readymade Garments	0.9739	262.52	256.20	243.07	+	2.47	+	8.00
45 Woolen Readymade Garments	0.3964	266.50	266.38	258.64	+	0.05	+	3.04
46 Hosiery	0.5094	264.90	259.22	246.51	+	2.19	+	7.46

Annexure A:CPI by Commodity Groups and Commodities (2007-08=100)

Item and Specification	Weight	Index Numbers			% Change in Apr 2018 over			
		Apr 2018	Mar 2018	Apr 2017	Mar 2018	Apr 2017		
47 Dopatta	0.4412	261.67	255.58	244.46	+	2.38	+	7.04
48 Cleaning and Laundry	0.2110	290.46	284.44	265.87	+	2.12	+	9.25
49 Tailoring	0.8840	343.91	336.91	313.43	+	2.08	+	9.72
50 Footwear	1.5504	177.36	167.95	167.05	+	5.60	+	6.17
<u>Housing, water, Elec., Gas and other</u>	29.4149	207.35	202.71	196.62	+	2.29	+	5.46
51 House Rent	21.8149	201.96	195.96	188.68	+	3.06	+	7.04
52 Construction Input Items	0.5623	269.11	264.40	250.55	+	1.78	+	7.41
53 Construction Wage Rates	0.3331	262.93	257.14	237.79	+	2.25	+	10.57
54 Water Supply	0.4971	177.11	174.83	168.16	+	1.30	+	5.32
55 Electricity	4.3985	238.10	238.10	238.10	+	0.00	+	0.00
56 Gas	1.5756	158.08	158.08	158.08	+	0.00	+	0.00
57 Kerosene Oil	0.0057	260.44	259.58	199.32	+	0.33	+	30.66
58 Firewood Whole	0.2277	301.32	302.24	290.56	-	0.30	+	3.70
<u>Furnishing and household</u>	4.2082	239.29	234.67	224.95	+	1.97	+	6.37
59 Furniture	0.3315	235.27	228.22	217.24	+	3.09	+	8.30
60 Household Textiles	0.6489	242.24	236.78	226.57	+	2.31	+	6.92
61 Household Equipment	0.5936	188.50	185.70	180.69	+	1.51	+	4.32
62 Utensils	0.3212	248.73	242.89	230.57	+	2.40	+	7.88
63 Plastic Products	0.2547	224.20	218.99	210.32	+	2.38	+	6.60
64 Washing Soaps & Detergents	0.7893	238.88	235.67	231.03	+	1.36	+	3.40
65 Sewing Needle & Dr Cell	0.1496	217.51	211.92	206.22	+	2.64	+	5.47
66 Household Servant	1.0432	270.32	265.40	249.98	+	1.85	+	8.14
67 Marriage Hall Charges	0.0762	260.28	257.76	245.66	+	0.98	+	5.95
<u>Health</u>	2.1868	223.08	221.26	212.43	+	0.82	+	5.01
68 Drugs & Medicines	1.2667	188.62	187.99	184.57	+	0.34	+	2.19
69 Medical Equipments	0.0080	259.89	256.26	251.01	+	1.42	+	3.54
70 Doctor (MBBS) Clinic Fee	0.5904	301.80	300.06	280.95	+	0.58	+	7.42
71 Medical Tests	0.3217	213.34	206.75	195.45	+	3.19	+	9.15
<u>Transport</u>	7.2023	187.48	186.98	176.33	+	0.27	+	6.32
72 Motor Vehicles	0.6630	187.45	185.84	173.26	+	0.87	+	8.19
73 Motor Vehicle Accessories	0.2439	216.78	216.02	212.27	+	0.35	+	2.12
74 Motor Fuel	3.0269	165.17	167.63	149.40	-	1.47	+	10.56
75 Mechanical Service	0.4552	241.91	238.14	230.12	+	1.58	+	5.12
76 Motor Vehicle Tax	0.1099	210.18	210.18	210.18	+	0.00	+	0.00
77 Transport Services	2.7034	199.74	196.76	193.56	+	1.51	+	3.19
<u>Communication</u>	3.2198	133.67	133.37	132.87	+	0.22	+	0.60
78 Postal Services	0.0662	272.18	259.00	249.16	+	5.09	+	9.24
79 Communication & Apparatus	3.1536	130.77	130.73	130.43	+	0.03	+	0.26
<u>Recreation and culture</u>	2.0227	207.96	200.38	196.02	+	3.78	+	6.09
80 Recreation & Culture	0.8634	134.05	132.03	129.72	+	1.53	+	3.34
81 Text Books	0.5706	303.91	287.98	287.98	+	5.53	+	5.53
82 Newspapers	0.1934	202.94	202.81	181.01	+	0.06	+	12.12
83 Stationery	0.3953	233.34	222.02	215.42	+	5.10	+	8.32
<u>Education</u>	3.9431	281.57	275.17	249.20	+	2.33	+	12.99
84 Education	3.9431	281.57	275.17	249.20	+	2.33	+	12.99
<u>Restaurants and hotels</u>	1.2286	291.05	287.84	275.88	+	1.12	+	5.50
85 Readymade Food	1.2286	291.05	287.84	275.88	+	1.12	+	5.50
<u>Misc. goods and services</u>	2.7550	263.59	256.35	244.71	+	2.82	+	7.72
86 Personal Care	1.4935	237.36	234.18	225.21	+	1.36	+	5.39
87 Cosmetics	0.3853	222.28	208.65	203.88	+	6.53	+	9.02
88 Blades	0.0322	203.39	201.85	195.78	+	0.76	+	3.89
89 Personal Equipments	0.8440	331.15	319.45	299.71	+	3.66	+	10.49

Annexure B: Wholesale Price Indices by Major Groups & Commodities

(2007-08=100)

Item and Specification	Weight	Index Numbers			% Change in Apr 2018 over	
		Apr 18	Mar 18	Apr 17	Mar 2018	Apr 2017
General	100.0000	228.07	225.22	219.22	+ 1.27	+ 4.04
Agriculture Forestry & Fisher	25.7674	260.48	254.55	254.52	+ 2.33	+ 2.34
001 Wheat	0.6297	203.30	209.00	208.27	- 2.73	- 2.39
002 Maize	0.6764	210.71	205.11	196.14	+ 2.73	+ 7.43
003 Rice	2.4413	174.07	173.85	161.46	+ 0.13	+ 7.81
004 Sorghum / Jowar	0.0214	261.38	256.85	237.62	+ 1.76	+ 10.00
005 Millet / Bajra	0.0374	197.62	188.77	168.81	+ 4.69	+ 17.07
006 Vegetables	1.2441	237.20	195.23	309.16	+ 21.50	- 23.28
007 Fresh Fruits	1.5144	308.39	291.61	302.55	+ 5.75	+ 1.93
008 Dry Fruits	0.2478	275.26	269.25	237.07	+ 2.23	+ 16.11
009 Cotton Seeds	1.1511	255.66	257.18	274.20	- 0.59	- 6.76
010 Other Oil Seeds	0.0722	182.04	177.04	182.29	+ 2.82	- 0.14
011 Edible Roots / Potatoes	0.2540	133.10	148.10	196.74	- 10.13	- 32.35
012 Stimulant & Spice Crops	0.1634	279.19	266.39	211.77	+ 4.80	+ 31.84
013 Pulses	0.4901	239.71	240.45	266.68	- 0.31	- 10.11
014 Sugar Crops	1.0725	257.62	257.62	268.94	+ 0.00	- 4.21
015 Fibre Crops	5.3169	242.34	234.67	219.01	+ 3.27	+ 10.65
016 Unmanufactured Tobacco	0.0742	308.03	308.03	279.24	+ 0.00	+ 10.31
017 Poultry	0.5633	230.37	219.05	223.38	+ 5.17	+ 3.13
018 Raw Milk from Bovine Animals	7.0279	280.72	275.47	268.56	+ 1.91	+ 4.53
019 Eggs	0.5034	188.73	201.84	169.58	- 6.50	+ 11.29
020 Raw Animal Materials / Wool	0.0351	176.13	173.81	177.28	+ 1.33	- 0.65
021 Hides & Fur Skins, Raw	0.4834	98.66	101.97	107.72	- 3.25	- 8.41
022 Fuel Wood in Logs	0.0179	283.56	283.56	279.63	+ 0.00	+ 1.41
023 Fish Live Fresh or Chilled	1.7295	476.70	476.70	467.04	+ 0.00	+ 2.07
Ores/Minerals, Elec., Gas & W	12.0389	242.84	242.92	242.28	- 0.03	+ 0.23
024 Coal not Agglomerated	0.7508	155.29	155.29	155.29	+ 0.00	+ 0.00
025 Natural Gas Liquefied	5.7385	210.84	211.00	209.92	- 0.08	+ 0.44
026 Salt & Pure Sodium Chloride	0.0584	266.38	266.38	242.00	+ 0.00	+ 10.07
027 Electrical Energy	5.4912	288.00	288.00	288.00	+ 0.00	+ 0.00
Food, Beverages, Tobacco, Textil	31.1122	233.13	231.06	227.31	+ 0.90	+ 2.56
Food Products, Beverages &	20.0718	240.00	238.95	238.72	+ 0.44	+ 0.54
028 Meat of Animals	3.4559	317.46	314.84	287.03	+ 0.83	+ 10.60
029 Vegetables & Fruit Juice	0.0058	226.66	224.97	223.21	+ 0.75	+ 1.55
030 Dried Fruits & Nuts	0.1733	290.88	291.20	263.49	- 0.11	+ 10.40
031 Fruit Juices	0.3880	184.96	183.21	180.42	+ 0.96	+ 2.52
032 Vegetable Oils Refined	1.9242	157.40	156.57	155.05	+ 0.53	+ 1.52
033 Vegetable Ghee	1.5632	128.77	127.28	126.45	+ 1.17	+ 1.83
034 Oil Cakes	0.9611	227.97	226.67	229.75	+ 0.57	- 0.77
035 Processed Liquid Milk	4.4437	288.23	288.23	262.24	+ 0.00	+ 9.91
036 Milk & Cream in Solid Form	0.0316	223.34	223.34	218.15	+ 0.00	+ 2.38
037 Ice Cream	0.0047	266.02	266.02	245.21	+ 0.00	+ 8.49
038 Dairy Products N.E.C	0.0117	273.79	272.54	254.71	+ 0.46	+ 7.49
039 Wheat Flour	2.3034	190.87	194.41	194.97	- 1.82	- 2.10
040 Other Cereal Flour	0.0604	213.24	210.20	242.58	+ 1.45	- 12.09
041 Sugar Refined	1.7975	196.05	189.93	221.44	+ 3.22	- 11.47
042 Chocolate	0.0139	100.00	100.00	100.00	+ 0.00	+ 0.00
043 Sugar Confectionary	0.0738	127.55	127.85	128.44	- 0.23	- 0.69
044 Coffee & Tea	0.7303	272.46	267.98	256.18	+ 1.67	+ 6.35
045 Spices	0.1449	202.24	202.23	190.30	+ 0.00	+ 6.27
046 Other Food Products	0.0336	294.50	294.50	293.85	+ 0.00	+ 0.22
047 Mineral Water	0.0207	211.50	211.50	198.57	+ 0.00	+ 6.51
048 Beverages	0.6303	173.00	173.00	172.33	+ 0.00	+ 0.39
049 Tobacco Products	1.2998	318.37	318.37	445.85	+ 0.00	- 28.59
Textiles & Apparels	10.3289	222.05	218.16	207.05	+ 1.78	+ 7.24
050 Cotton Yarn	5.2491	229.04	222.05	203.06	+ 3.15	+ 12.79
051 Nylon Yarn	0.1719	143.99	143.99	143.99	+ 0.00	+ 0.00
052 Blended Yarn	0.1689	192.56	189.19	182.78	+ 1.78	+ 5.35
053 Woven Fabrics	0.0128	321.49	321.49	310.72	+ 0.00	+ 3.47
054 Cotton Fabrics	0.6343	214.23	214.23	209.95	+ 0.00	+ 2.04
055 Other Fabrics	1.1016	227.16	227.16	224.40	+ 0.00	+ 1.23
056 Silk & Reyon Fabrics	0.7350	188.14	188.14	186.55	+ 0.00	+ 0.85
057 Towels	0.1235	276.14	276.14	276.14	+ 0.00	+ 0.00
058 Blankets	0.0029	265.03	265.03	247.52	+ 0.00	+ 7.07
059 Bed Sheets	0.0913	256.87	256.87	256.07	+ 0.00	+ 0.31

Annexure B: Wholesale Price Indices by Major Groups & Commodities

(2007-08=100)

Item and Specification	Weight	Index Numbers			% Change in Apr 2018 over	
		Apr 18	Mar 18	Apr 17	Mar 2018	Apr 2017
060 Quilts	0.0019	222.32	222.32	203.79	+ 0.00	+ 9.09
061 Woolen Carpets	0.0383	196.43	196.43	196.43	+ 0.00	+ 0.00
062 Synthetic Carpets	0.0566	130.95	130.95	130.95	+ 0.00	+ 0.00
063 Hosiery Products	0.8832	248.01	244.42	241.83	+ 1.47	+ 2.56
064 Readymade Garments	1.0576	201.16	201.37	197.19	- 0.10	+ 2.01
Leather Products	0.7115	199.90	195.77	199.75	+ 2.11	+ 0.08
065 Leather Without Hair	0.2973	212.68	212.68	221.97	+ 0.00	- 4.19
066 Other Leather N.E.C	0.2567	207.02	207.02	207.31	+ 0.00	- 0.14
067 Footwears	0.1575	164.15	145.51	145.51	+ 12.81	+ 12.81
Other Transportable Goods	22.3659	193.68	191.75	171.61	+ 1.01	+ 12.86
068 Timber	0.0165	237.00	237.00	231.53	+ 0.00	+ 2.36
069 Printing Paper	0.4279	170.48	168.59	173.54	+ 1.12	- 1.76
070 Hard Board	0.1579	260.42	225.00	220.83	+ 15.74	+ 17.93
071 Coke	0.2797	163.45	163.45	163.45	+ 0.00	+ 0.00
072 Motor Spirit	1.5336	145.27	148.77	124.98	- 2.35	+ 16.23
073 Diesel Oil	5.2664	203.45	205.65	156.91	- 1.07	+ 29.66
074 Kerosine Oil	0.2151	203.79	203.79	117.12	+ 0.00	+ 74.00
075 Furnace Oil	3.2664	131.92	125.91	98.59	+ 4.77	+ 33.81
076 Mobil Oil	0.7114	201.08	200.85	200.49	+ 0.11	+ 0.29
077 Chemicals	1.7720	191.56	188.57	170.99	+ 1.59	+ 12.03
078 Dyeing Material	0.1539	146.55	146.55	146.55	+ 0.00	+ 0.00
079 Fertilizers	2.8657	226.05	226.19	218.31	- 0.06	+ 3.55
080 Pesticides	0.2763	310.16	310.16	304.43	+ 0.00	+ 1.88
081 Insecticides	0.1276	141.00	140.61	142.02	+ 0.28	- 0.72
082 Paints & Varnishes	0.1916	301.12	301.12	294.51	+ 0.00	+ 2.24
083 Medicines	1.1428	177.04	177.01	174.00	+ 0.02	+ 1.75
084 Soaps & Detergents	0.8168	190.72	191.35	191.21	- 0.33	- 0.26
085 Auto Tyres	0.2703	177.11	177.11	177.07	+ 0.00	+ 0.02
086 Plastic Products	0.4550	239.27	226.00	225.88	+ 5.87	+ 5.93
087 Glass sheets	0.2089	302.27	302.27	298.97	+ 0.00	+ 1.10
088 Other Glass Articles	0.1635	318.10	318.10	317.24	+ 0.00	+ 0.27
089 Ceramics & Sanitary Fixture	0.0244	236.41	234.76	233.92	+ 0.70	+ 1.06
090 Bricks, Blocks & Tiles	0.1566	223.30	223.30	220.73	+ 0.00	+ 1.16
091 Cement	1.8145	223.43	210.55	216.55	+ 6.12	+ 3.18
092 Bed Foam	0.0006	175.33	173.00	170.00	+ 1.35	+ 3.14
093 Matches	0.0505	171.36	171.36	171.36	+ 0.00	+ 0.00
Metal Product, Machinery & Eq	8.7156	182.01	179.07	176.25	+ 1.64	+ 3.27
094 Pig Iron	0.0593	128.97	128.97	128.97	+ 0.00	+ 0.00
095 Steel Bar & Sheets	1.4022	158.63	147.50	134.87	+ 7.55	+ 17.62
096 Pipe Fittings	0.0780	215.66	215.66	215.29	+ 0.00	+ 0.17
097 Steel Products	0.3879	176.76	176.70	177.56	+ 0.03	- 0.45
098 Engines & Motors	0.0046	116.98	116.98	116.98	+ 0.00	+ 0.00
099 Vacuum Pumps	0.0155	123.69	123.69	123.69	+ 0.00	+ 0.00
100 Air Conditioners	0.0049	200.10	200.10	200.10	+ 0.00	+ 0.00
101 Cultivators	0.0551	190.66	190.66	190.66	+ 0.00	+ 0.00
102 Chuff Cutter	0.1293	153.46	153.46	153.46	+ 0.00	+ 0.00
103 Tractors	0.0028	201.75	201.75	201.75	+ 0.00	+ 0.00
104 Lathe Machines	0.0525	241.06	241.06	241.06	+ 0.00	+ 0.00
105 Concrete Mixture	0.0107	138.83	138.83	138.83	+ 0.00	+ 0.00
106 Fridge,WashM,SewM,Fans,Iron	1.1645	222.10	218.55	213.78	+ 1.62	+ 3.89
107 Electric Wires	0.0912	208.22	205.92	204.51	+ 1.12	+ 1.81
108 Lighting Equipments	1.4431	174.04	171.39	170.73	+ 1.55	+ 1.94
109 Radio & Television	0.1843	140.42	140.42	140.42	+ 0.00	+ 0.00
110 Motor Vehicles	0.0244	211.00	211.00	191.39	+ 0.00	+ 10.25
111 Motorcycles	0.2570	133.32	126.05	125.89	+ 5.77	+ 5.90
112 Bicycles	3.3483	187.65	187.65	187.65	+ 0.00	+ 0.00