



Monthly Review on Price Indices



**October, 2018 (Rationalized)*
(Base 2007-08)**

**Government of Pakistan
Ministry of Statistics
Pakistan Bureau of Statistics
Islamabad**

* Monthly review of price indices for the month of October, 2018 has been rationalized by adjusting Seven slabs of Gas prices introduced by OGRA into Five slabs of CPI methodology adopted by PBS.

Inflation in Brief

1. CPI inflation General increased by 6.8% on year-on-year basis in October 2018 as compared to an increase of 5.1% in the previous month and 3.8% in October 2017. On month-on-month basis, it increased by 2.3% in October 2018 as compared to a decrease of 0.1% in the previous month and increase of 0.7% in October 2017.
2. Core inflation measured by non-food non-energy CPI (Core NFNE) increased by 8.2% on (YoY) basis in October 2018 as compared to an increase of 8.0% in the previous month and 5.3% in October 2017. On (MoM) basis, it increased by 1.1% in October 2018 as compared to an increase of 0.4% in previous month, and an increase of 0.9% in corresponding month of last year i.e. October 2017.
3. Core inflation, measured by 20% weighted trimmed mean CPI (Core Trimmed) increased by 6.7% on (YoY) basis in October 2018 as compared to 5.8% in the previous month and by 4.0% in October 2017. On (MoM) basis, it increased by 0.8% in October 2018 as compared to an increase of 0.1% in the previous month and an increase of 0.6% in corresponding month of last year i.e. October 2017.
4. The CPI by Income Quintiles and Commodity Groups for October 2018 (MoM and YoY) is placed at Annexure-C.
5. SPI inflation on YoY basis increased by 1.34% in October 2018 as compared to an increase of 1.0% a month earlier and an increase of 2.1% in October 2017. On MoM basis, it increased by 1.1% in October 2018 as compared to a decrease of 0.1% a month earlier and an increase of 0.9% in October 2017.
6. WPI inflation on YoY basis increased by 13.1% in October 2018 as compared to an increase of 9.2% a month earlier and an increase of 2.3% in October 2017. WPI inflation on MoM basis increased by 4.2% in October 2018 as compared to a decrease of 1.5% a month earlier and an increase of 0.6% in corresponding month of last year i.e. October 2017.
7. Figures 1 and 2 show graphically the data of Table1. Table1.1 shows "Period Average" and "YoY" percent changes in indices of three years.

Table 1: Inflation (%) (Base 2007-08)

Period	CPI						Core Inflation				SPI**		WPI	
	General		Food		Non-food		NFNE*		Trimmed		YoY	MoM	YoY	MoM
	YoY	MoM	YoY	MoM	YoY	MoM	YoY	MoM	YoY	MoM				
Sep-17	3.9	0.6	2.4	1.3	4.9	0.2	5.4	0.1	4.1	0.1	1.9	2.1	1.6	0.1
Oct-17	3.8	0.7	2.2	0.6	4.9	0.8	5.3	0.9	4.0	0.6	2.1	0.9	2.3	0.6
Nov-17	4.0	0.4	2.4	0.4	5.1	0.4	5.5	0.3	4.2	0.3	2.1	0.3	2.9	0.4
Dec-17	4.6	-0.1	3.8	-0.6	5.1	0.2	5.5	0.2	4.7	0.2	2.2	-0.7	3.4	0.4
Jan-18	4.4	0.0	3.7	-1.0	4.9	0.8	5.2	0.8	4.6	0.6	2.0	-1.0	4.7	1.8
Feb-18	3.8	-0.3	2.2	-1.1	4.9	0.2	5.2	0.2	4.3	0.1	0.5	-1.2	4.1	-0.1
Mar-18	3.2	0.3	0.1	-0.3	5.4	0.7	5.8	0.7	4.1	0.2	-1.8	-0.6	3.6	0.2
Apr-18	3.7	1.8	-0.2	1.5	6.4	2.1	7.0	2.5	5.0	1.6	-0.5	0.4	4.0	1.3
May-18	4.2	0.5	1.0	1.0	6.4	0.2	7.0	0.2	5.1	0.3	0.5	0.1	5.6	1.3
Jun-18	5.2	0.6	3.0	0.8	6.7	0.4	7.1	0.3	5.4	0.2	1.9	1.8	7.6	1.5
Jul-18	5.8	0.9	3.5	0.6	7.4	1.2	7.6	1.2	5.9	0.9	3.6	1.2	10.5	2.4
Aug-18	5.8	0.2	3.3	0.2	7.6	0.2	7.7	0.2	5.9	0.2	3.3	0.2	11.0	0.8
Sep-18	5.1	-0.1	1.4	-0.7	7.7	0.3	8.0	0.4	5.8	0.1	1.0	-0.1	9.2	-1.5
Oct-18	6.8	2.3	2.7	1.9	9.6	2.6	8.2	1.1	6.7	0.8	1.3	1.1	13.1	4.2

*NFNE is non-food non-energy, ** SPI for quintile 1. Digits 0.0* are due to rounding off.

Table 1.1 : Period Average and YoY % Changes of Indices (Base 2007-08)

Index	Average July - October % changes			October over October % changes		
	2018-19	2017-18	2016-17	2018	2017	2016
CPI	5.90	3.50	3.95	6.78	3.80	4.21
SPI	2.29	0.84	1.79	1.34	2.12	1.29
WPI	10.97	1.39	3.17	13.12	2.27	2.80

Figure 1: CPI Inflation YoY, Special Indices

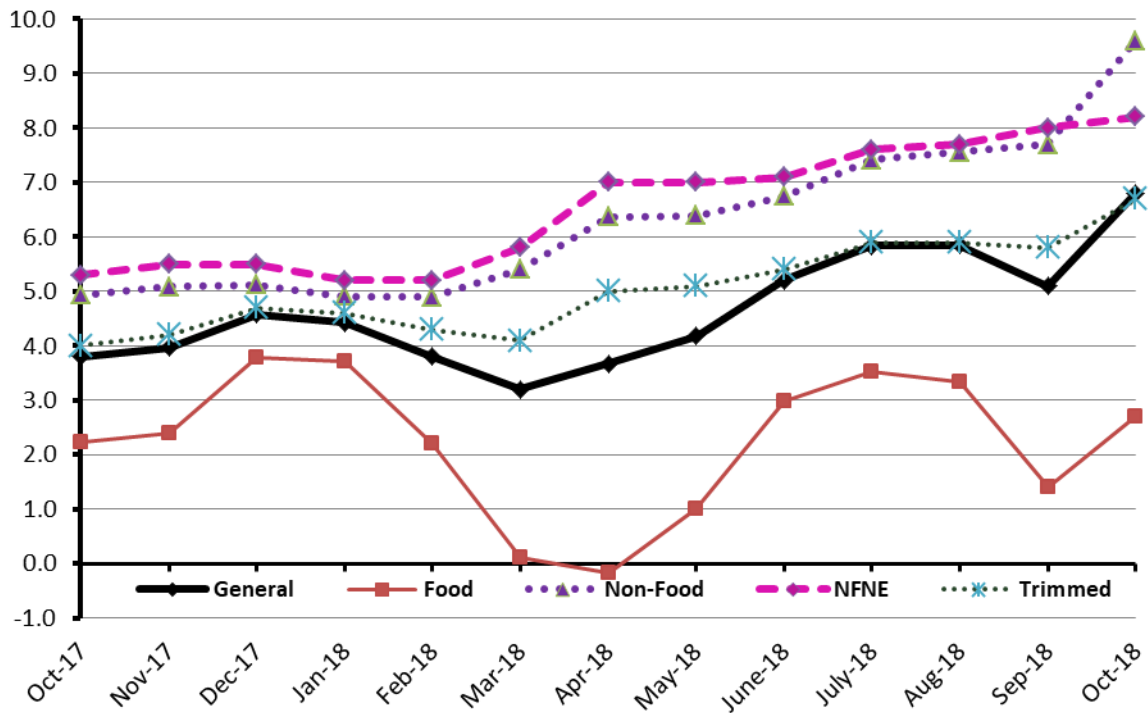
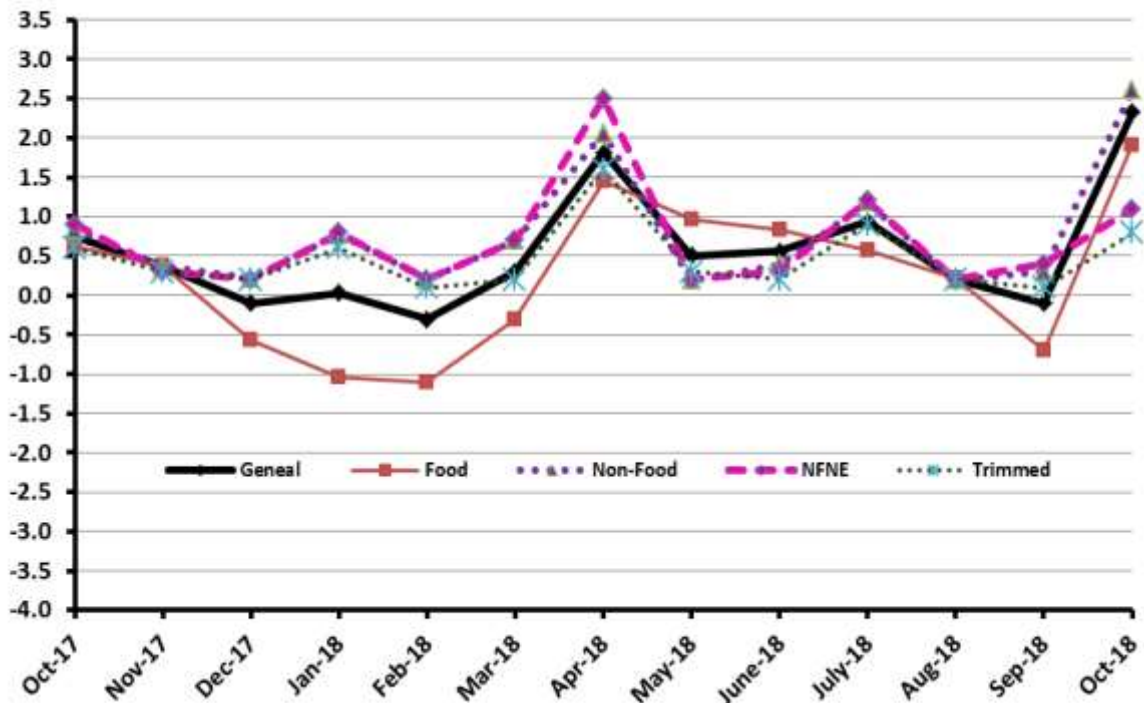


Figure 2: CPI Inflation MoM, Special Indices



I. Consumer Price Index (CPI)

The Consumer Price Index of October, 2018 is increased by 2.33% over September 2018 and increased by 6.78% over corresponding month of the last year i.e. October 2017.

Table 2 : Consumer Price Index by Group of Commodities and Services (Base 2007-08)

No	Group	Group Weight (%)	Indices			% Change October 2018 Over		Impact (In % points) October 2018 Over	
			Oct 2018	Sep 2018	Oct 2017	Sep 2018	Oct 2017	Sep 2018	Oct 2017
	General	100.00	234.49	229.14	219.61	2.33	6.78	2.33	6.78
1.	Food & Non-alcoholic Bev.	34.83	240.50	236.78	235.70	1.57	2.04	0.56	0.76
	<i>Non-perishable Food Items</i>	29.84	238.09	234.40	226.27	1.57	5.22	0.48	1.61
	<i>Perishable Food Items</i>	4.99	254.86	251.03	292.08	1.53	-12.74	0.08	-0.85
2.	Alcoholic Bev. & Tobacco	1.41	344.03	314.42	305.31	9.42	12.68	0.18	0.25
3.	Clothing & Footwear	7.57	256.09	255.36	239.94	0.29	6.73	0.02	0.56
4.	Housing, Water, Electricity, Gas & Fuels	29.41	219.07	210.82	200.90	3.91	9.04	1.06	2.43
5.	Furnishing & Household Equipment Maintenance	4.21	245.51	243.36	229.47	0.88	6.99	0.04	0.31
6.	Health	2.19	234.02	226.78	214.29	3.19	9.21	0.07	0.20
7.	Transport	7.20	210.00	205.19	177.05	2.34	18.61	0.16	1.08
8.	Communication	3.22	143.45	133.78	133.10	7.23	7.78	0.14	0.15
9.	Recreation & Culture	2.02	213.73	210.12	196.86	1.72	8.57	0.03	0.16
10.	Education	3.94	288.62	287.41	258.75	0.42	11.54	0.02	0.54
11.	Restaurants & Hotels	1.23	297.40	295.86	283.86	0.52	4.77	0.01	0.08
12.	Miscellaneous	2.76	271.43	267.30	249.68	1.55	8.71	0.05	0.27

Main contributors to month-on-month and year-on-year percentage changes are given below and detail is given in Annexure A.

1. Month-on-month Top few commodities which varied from previous month are given below: -

Food Increased: Chicken (35.25%), Eggs (14.41%), Cigarettes (9.67%), Tomatoes (3.85%), Fresh Vegetables (3.7%), Spices (1.89%), Betel leaves & nuts (1.77%) and Wheat (1.56%).

Decreased: Onion (4.43%), Fish (1.38%), Pulse Mash (1.18%) and Gram Whole (0.20%).

Non-food Items Increased: Gas (85.31%), Newspapers (15.90%), Communication & Apparatus (7.54%), Doctor MBBS Clinic Fee (3.39%), Drugs & Medicines (3.32%), Motor Fuel (3.23%), Water Supply (2.70%), Personal Equipment (2.62%), Medical Tests (2.37%), Transport Services (2.04%), Motor Vehicle Accessories (1.88%) and Construction Input Items (1.83%).

Non-food Decreased: Kerosene Oil (0.22%).

2. Year-on-Year: Top few commodities which varied from previous year i.e. September 2017 are given below:-

Food Increased: Betel leaves & nuts (141.44%), Chicken (28.31%), Spices (12.61%), Meat (11.7%), Cigarettes (10.89%), Dry Fruits (10.29%), Rice (9.73%), Tea (8.82%), Sweet Meat (7.74%), Honey (6.67%), Eggs (6.07%), Jam Tomato ketchup & Pickles (6.04%), Milk Powder (5.47%), Condiments (5.37%) and Readymade Food (4.77%).

Decreased: Onion (55.97%), Tomatoes (28.75%), Potatoes (21.25%), Pulse Mash (19.66%), Gram Whole (10.75%), Pulse Masoor (7.95%), Pulse Moong (5.79%), Besan (4.86%) and Pulse Gram (3.28%).

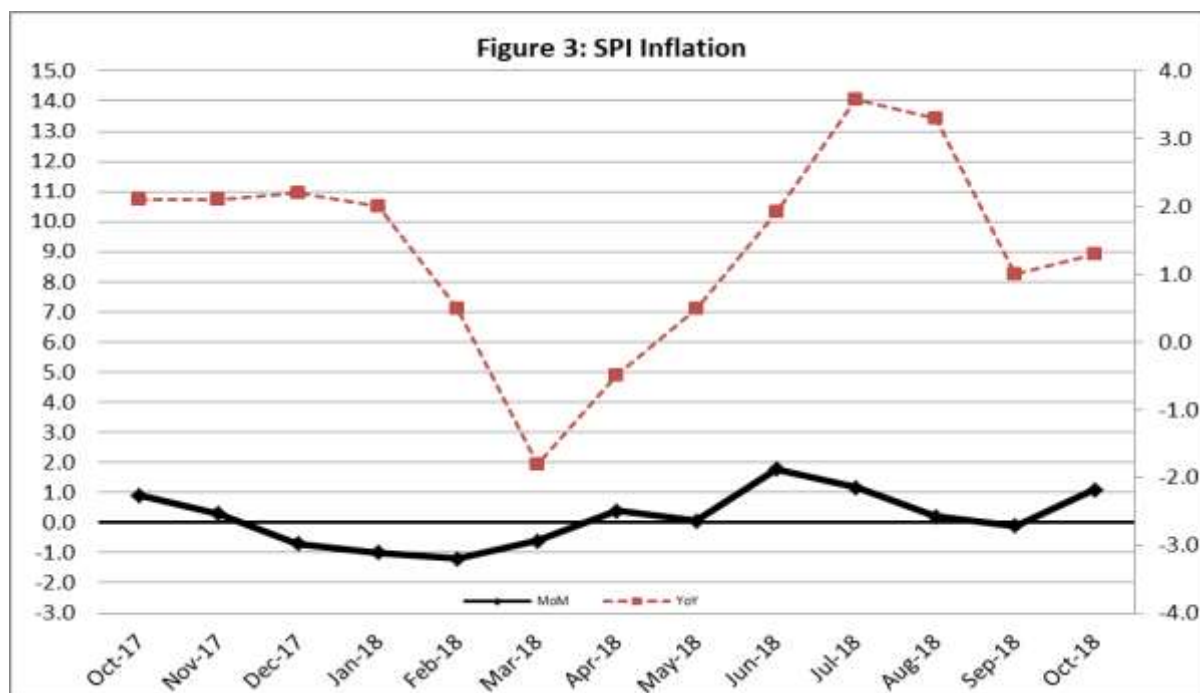
Non-food Increased: Gas (85.31%), Kerosene Oil (31.81%), Newspapers (27.82%), Motor Fuel (26.41%), Transport Services (17.74%), Water Supply (13.62%), Motor Vehicles (12.94%), Doctor (MBBS) Clinic Fee (12.8%), Personal Equipments (12.38%), Education (11.54%), Construction Input Items (11.07%), Medical Tests (10.72%), Utensils (10.58%), Cosmetics (10.48%) and Construction Wage Rates (10.01%).

II. Sensitive Price Indicator

Quintile-wise percentage changes YoY and MoM are given below in Table 3. The series from October 2017 to October 2018 is also graphed below in Figure 3.

Table 3: Sensitive Price Indicator (Base 2007-08)					
Quintiles	Indices			% Change October, 2018 over	
	October, 2018	September, 2018	October, 2017	September, 2018	October, 2017
1	219.09	216.60	216.20	1.15	1.34
2	228.03	224.85	223.62	1.41	1.97
3	229.72	226.50	224.77	1.42	2.20
4	239.75	231.38	228.71	3.62	4.83
5	242.86	230.19	225.15	5.50	7.87
Combined	235.22	228.27	225.15	3.04	4.47

Table 3.1 : Weekly Percentage Change of SPI During October, 2018				
Quintiles	% Change with Previous week			
	4 th Oct-2018	11 th Oct-2018	18 th Oct-2018	25 th Oct-2018
Quintile 1	0.40	0.64	-0.21	0.00
Combined	0.54	2.89	-0.14	-0.01



III. Wholesale Price Index

The Wholesale Price Index for October, 2018 increased 4.17% over September, 2018. It increased by 13.12% over the corresponding month of the last year. YoY and MoM movements, from October, 2017 to October, 2018 are also graphed below in Figure 4.

Table 4 : Wholesale Price Index by Group of Commodities (Base 2007-08)

No.	Group	Group Weight (%)	Indices			% Change Oct, 2018 over		Impact (in %age points) Oct, 2018 over	
			Oct. 2018	Sep. 2018	Oct, 2017	Sep. 2018	Oct, 2017	Sep. 2018	Oct, 2017
	General	100.00	248.19	238.25	219.41	4.17	13.12	4.17	13.12
1.	Agriculture, Forestry & Fishery Products	25.77	272.57	267.67	254.45	1.83	7.12	0.53	2.13
2.	Ores & Minerals, Electricity, Gas & Water	12.04	293.55	244.76	242.97	19.93	20.82	2.47	2.78
3.	Food Products, Beverages & Tobacco, Textiles, Apparel & Leather Products	31.11	248.54	243.64	226.01	2.01	9.97	0.64	3.20
	i. Food Products, Bev. & Tobacco	20.07	255.14	248.81	236.32	2.54	7.96	0.53	1.72
	ii. Textiles and Apparel	10.33	236.00	236.54	207.78	-0.23	13.58	-0.02	1.33
	iii. Leather Products	0.71	244.52	200.77	199.75	21.79	22.41	0.13	0.15
4.	Other Transportable Goods except Metal Products, Machinery & Equipment	22.37	217.85	213.10	173.59	2.23	25.50	0.45	4.51
5.	Metal Products, Machinery & Equipment	8.72	190.04	187.64	177.34	1.28	7.16	0.09	0.50

Main contributors to month-on-month and year-on-year percentage changes are given below and detail is given in Annexure B.

- Month-on-month** Top few commodities which varied from previous month i.e. September, 2018 are given below: -

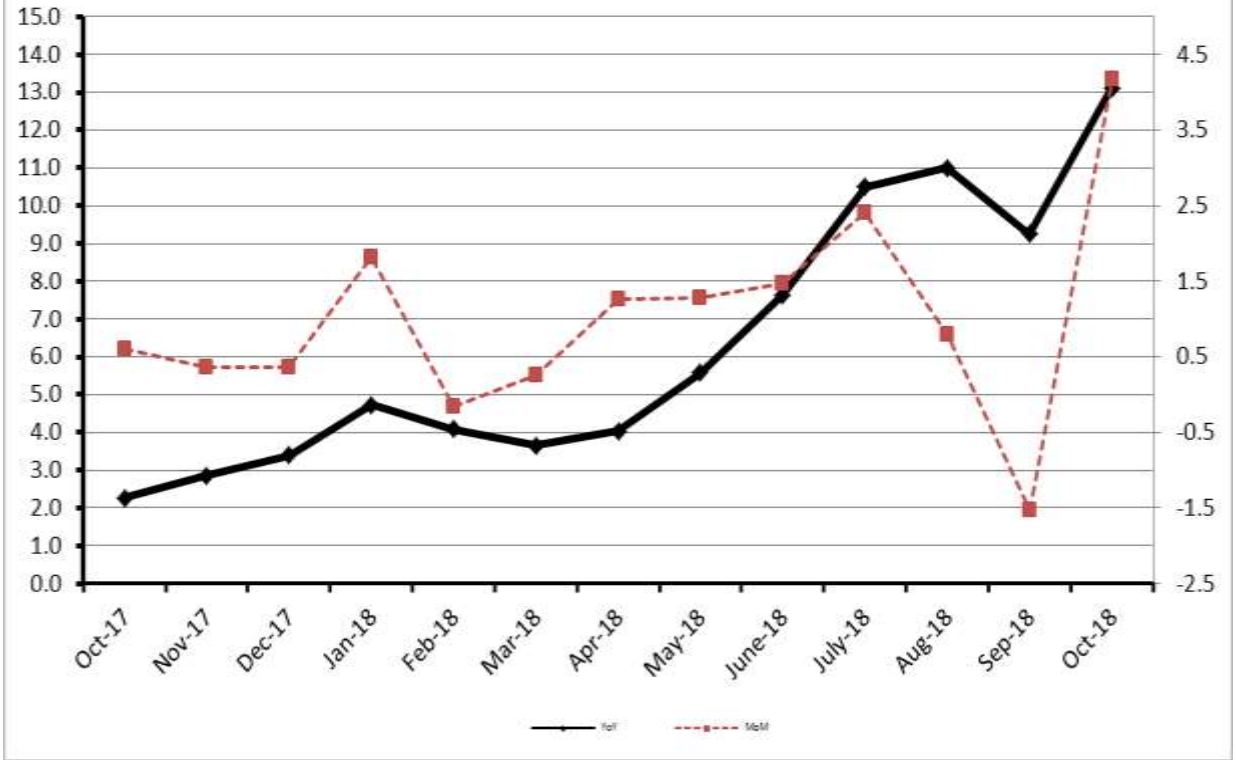
Increased: Other Leather N.E.C (51.40%), Natural Gas (47.65%), Poultry (41.35%), Tobacco Products (23.20%), Eggs (16.14%), Furnace Oil (12.20%), Lathe Machines (11.33%), Potatoes (7.56%), Leather Without Hair (6.04%), Vegetables (5.09%), Stimulant & Spice Crops (4.42%), Spices and Fresh Fruits (4.27%) each, Fertilizers (4.19%), Fridge, Washing Machine, Fan etc (4.13%), Bed Foam (3.40%), Steel Bar & Sheets (3.32%), Bricks, Bar & Tiles (2.63%), Other Food Products (2.46%), Air Conditioners (2.38%), Oil Cakes (2.22%), Fish (1.73%), Pipe Fittings (1.72%), Motor Vehicles (1.69%), Chemicals (1.32%), Fibre Crops (1.31%), Printing Paper, Meat and Other Oil Seeds (1.19%) each, Wheat (1.10%), Woven Fabrics (1.02%) and Wheat Flour (1.00%).

Decreased: Bajra (6.59%), Maize (6.24%), Jowar (3.52%), Blended Yarn (1.38%) and Other Cereal Flour (1.25%).
- Year-on-year** Top few commodities which varied from previous year i.e. October, 2017 are given below: -

Increased: Furnace Oil (74.38%), Kerosene Oil (74.32%), Bajra (52.39%), Other Leather N.E.C (51.18%), Natural Gas (50.11%), Diesel (47.84%), Fibre Crops (34.02%), Hard Board (29.63%), Jowar (27.70%), Petrol (26.32%), Cotton Yarn (25.03%), Steel Bar & Sheets (24.61%), Tobacco Products (23.69%), Chemicals (21.89%), Paints & Varnishes (18.41%), Fertilizers (16.62%), Footwears (15.52%), Stimulant & Spice Crops (14.02%), Poultry (13.79%), Motor Vehicles (13.53%), Dry Fruits (13.41%), Maize (12.30%), Meat (12.26%) and Dried Fruits & Nuts (12.09%).

Decreased: Potatoes (19.73%), Vegetables (17.48%), Pulses (12.33%) and Hides & Fur Skins, Raw (10.22%).

Figure 4: WPI Inflation



Annexure – A: CPI by Commodity Groups and Commodities (2007-08=100)

Item and Specification	Weight	Index Numbers			% Change in October 2018 over			
		Oct 2018	Sep 2018	Oct 2017	Sep 2018	Oct 2017		
<i>General</i>	100.000	234.49	229.14	219.61	+	2.33	+	6.78
<i>Food and non-alcoholic Beverages</i>	34.8343	240.50	236.78	235.69	+	1.57	+	2.04
1 Wheat	0.3477	203.64	200.51	197.74	+	1.56	+	2.98
2 Wheat Flour	4.1648	214.19	212.55	207.43	+	0.77	+	3.26
3 Wheat Product	0.0959	214.54	213.99	213.11	+	0.26	+	0.67
4 Besan	0.1500	267.01	266.82	280.66	+	0.07	-	4.86
5 Rice	1.5821	200.65	199.02	182.85	+	0.82	+	9.73
6 Cereals	0.1563	264.48	264.45	257.39	+	0.01	+	2.75
7 Bakery & Confectionary	1.1550	229.04	229.45	219.29	-	0.18	+	4.45
8 Nimco	0.4574	260.78	261.61	256.68	-	0.32	+	1.60
9 Meat	2.4303	318.04	314.34	284.72	+	1.18	+	11.70
10 Chicken	1.3596	194.00	143.44	151.20	+	35.2	+	28.31
11 Fish	0.2970	220.02	223.09	214.23	-	1.38	+	2.70
12 Milk Fresh	6.6800	286.97	287.14	277.04	-	0.06	+	3.58
13 Milk Products	0.6338	278.92	278.55	268.10	+	0.13	+	4.04
14 Milk Powder	0.1129	248.64	247.39	235.75	+	0.51	+	5.47
15 Eggs	0.4555	222.28	194.28	209.55	+	14.4	+	6.07
16 Mustard Oil	0.0952	164.90	164.80	161.44	+	0.06	+	2.14
17 Cooking Oil	1.7538	142.23	141.62	138.35	+	0.43	+	2.80
18 Vegetable Ghee	2.0714	148.48	147.60	143.26	+	0.60	+	3.64
19 Dry Fruits	0.2543	292.79	291.02	265.47	+	0.61	+	10.29
20 Fresh Fruits	1.8649	243.57	243.78	235.56	-	0.09	+	3.40
21 Pulse Masoor	0.2712	158.64	156.97	172.34	+	1.06	-	7.95
22 Pulse Moong	0.2336	218.49	217.37	231.93	+	0.52	-	5.79
23 Pulse Mash (Washed)	0.2098	205.28	207.73	255.52	-	1.18	-	19.66
24 Pulse Gram	0.2361	266.59	265.30	275.63	+	0.49	-	3.28
25 Gram Whole	0.1616	265.11	265.65	297.03	-	0.20	-	10.75
26 Beans	0.0269	246.97	245.51	244.14	+	0.59	+	1.16
27 Potatoes	0.4452	215.48	215.21	273.63	+	0.13	-	21.25
28 Onion	0.5093	216.58	226.63	491.92	-	4.43	-	<u>55.97</u>
29 Tomatoes	0.4172	240.62	231.71	337.71	+	3.85	-	28.75
30 Fresh Vegetables	1.7543	291.33	280.93	287.98	+	3.70	+	1.16
31 Sugar	1.0445	197.97	197.47	197.79	+	0.25	+	0.09
32 Gur	0.0220	262.49	259.35	263.15	+	1.21	-	0.25
33 Honey	0.0446	356.59	352.68	334.28	+	1.11	+	6.67
34 SweetMeat	0.2483	273.59	273.01	253.94	+	0.21	+	7.74
35 Beverages	1.1990	235.01	233.14	226.52	+	0.80	+	3.75
36 Jam, Tomato Ketchup & Pickles	0.2454	235.37	233.20	221.97	+	0.93	+	6.04
37 Condiments	0.2656	288.04	286.64	273.37	+	0.49	+	5.37
38 Spices	0.5441	269.25	264.25	239.11	+	1.89	+	12.61
39 Tea	0.8377	308.83	307.50	283.79	+	0.43	+	8.82
<i>Alcoholic Beverages, Tobacco</i>	1.4135	344.03	314.42	305.31	+	9.42	+	12.68
40 Cigarettes	1.3906	339.42	309.50	306.09	+	9.67	+	10.89
41 Betel Leaves & Nuts	0.0229	623.88	613.03	258.40	+	1.77	+	141.44
<i>Clothing and footwear</i>	7.5708	256.10	255.36	239.94	+	0.29	+	6.74
42 Cotton Cloth	1.7286	249.22	248.90	233.43	+	0.13	+	6.76
43 Woolen Cloth	0.8759	268.51	268.05	258.28	+	0.17	+	3.96
44 Readymade Garments	0.9739	266.32	264.55	248.07	+	0.67	+	7.36
45 Woolen Readymade Garments	0.3964	267.56	267.54	259.47	+	0.01	+	3.12
46 Hosiery	0.5094	269.25	267.72	252.12	+	0.57	+	6.79

Annexure A: CPI by Commodity Groups and Commodities (2007-08=100)

Item and Specification	Weight	Index Numbers			% Change in October 2018 over		
		Oct 2018	Sep 2018	Oct 2017	Sep 2018	Oct 2017	
47 Dopatta	0.4412	267.69	266.54	246.72	+	0.43	+ 8.50
48 Cleaning and Laundry	0.2110	293.09	292.02	272.90	+	0.37	+ 7.40
49 Tailoring	0.8840	351.86	350.43	325.55	+	0.41	+ 8.08
50 Footwear	1.5504	180.14	180.09	167.50	+	0.03	+ 7.55
<u>Housing, water, Elec., Gas and other</u>	29.4149	219.07	210.82	200.90	+	3.91	+ 9.04
51 House Rent	21.8149	207.09	206.00	194.05	+	0.53	+ 6.72
52 Construction Input Items	0.5623	285.53	280.39	257.07	+	1.83	+ 11.07
53 Construction Wage Rates	0.3331	271.55	268.44	246.85	+	1.16	+ 10.01
54 Water Supply	0.4971	194.95	189.82	171.58	+	2.70	+ 13.62
55 Electricity	4.3985	238.10	238.10	238.10	+	0.00	+ 0.00
56 Gas	1.5756	292.94	158.08	158.08	+	<u>85.3</u>	+ <u>85.31</u>
57 Kerosene Oil	0.0057	271.88	272.49	206.26	-	0.22	+ 31.81
58 Firewood Whole	0.2277	299.07	299.07	293.20	+	0.00	+ 2.00
<u>Furnishing and household</u>	4.2082	245.50	243.36	229.47	+	0.88	+ 6.99
59 Furniture	0.3315	242.25	238.44	221.60	+	1.60	+ 9.32
60 Household Textiles	0.6489	245.96	243.85	232.05	+	0.87	+ 5.99
61 Household Equipment	0.5936	194.50	193.22	183.44	+	0.66	+ 6.03
62 Utensils	0.3212	259.94	257.08	235.07	+	1.11	+ 10.58
63 Plastic Products	0.2547	231.09	229.26	213.86	+	0.80	+ 8.06
64 Washing Soaps & Detergents	0.7893	248.45	245.92	233.12	+	1.03	+ 6.58
65 Sewing Needle & Dr Cell	0.1496	223.03	221.76	209.49	+	0.57	+ 6.46
66 Household Servant	1.0432	273.41	271.59	257.30	+	0.67	+ 6.26
67 Marriage Hall Charges	0.0762	271.76	270.18	249.20	+	0.58	+ 9.05
<u>Health</u>	2.1868	234.03	226.78	214.27	+	3.20	+ 9.22
68 Drugs & Medicines	1.2667	197.59	191.25	185.84	+	3.32	+ 6.32
69 Medical Equipments	0.0080	263.99	263.71	253.63	+	0.11	+ 4.08
70 Doctor (MBBS) Clinic Fee	0.5904	318.34	307.89	282.22	+	3.39	+ 12.80
71 Medical Tests	0.3217	222.03	216.89	200.53	+	2.37	+ 10.72
<u>Transport</u>	7.2023	210.00	205.19	177.05	+	2.34	+ 18.61
72 Motor Vehicles	0.6630	200.53	197.12	177.56	+	1.73	+ 12.94
73 Motor Vehicle Accessories	0.2439	224.74	220.60	214.38	+	1.88	+ 4.83
74 Motor Fuel	3.0269	189.09	183.18	149.58	+	3.23	+ 26.41
75 Mechanical Service	0.4552	248.46	245.90	232.74	+	1.04	+ 6.75
76 Motor Vehicle Tax	0.1099	210.18	210.18	210.18	+	0.00	+ 0.00
77 Transport Services	2.7034	227.93	223.38	193.59	+	2.04	+ 17.74
<u>Communication</u>	3.2198	143.45	133.78	133.10	+	7.23	+ 7.78
78 Postal Services	0.0662	272.57	272.45	251.59	+	0.04	+ 8.34
79 Communication & Apparatus	3.1536	140.74	130.87	130.61	+	7.54	+ 7.76
<u>Recreation and culture</u>	2.0227	213.73	210.12	196.83	+	1.72	+ 8.59
80 Recreation & Culture	0.8634	137.39	137.22	129.49	+	0.12	+ 6.10
81 Text Books	0.5706	304.61	304.43	287.98	+	0.06	+ 5.77
82 Newspapers	0.1934	235.21	202.94	184.01	+	15.9	+ 27.82
83 Stationery	0.3953	238.80	236.70	218.60	+	0.89	+ 9.24
<u>Education</u>	3.9431	288.62	287.41	258.75	+	0.42	+ 11.54
84 Education	3.9431	288.62	287.41	258.75	+	0.42	+ 11.54
<u>Restaurants and hotels</u>	1.2286	297.39	295.86	283.85	+	0.52	+ 4.77
85 Readymade Food	1.2286	297.39	295.86	283.85	+	0.52	+ 4.77
<u>Misc. goods and services</u>	2.7550	271.44	267.30	249.67	+	1.55	+ 8.72
86 Personal Care	1.4935	244.22	242.09	231.11	+	0.88	+ 5.67
87 Cosmetics	0.3853	227.83	225.61	206.22	+	0.98	+ 10.48
88 Blades	0.0322	206.96	206.54	197.94	+	0.20	+ 4.56
89 Personal Equipments	0.8440	341.98	333.26	304.32	+	2.62	+ 12.38

Annexure – B: Wholesale Price Indices by Major Groups & Commodities (2007-08=100)

Item and Specification	Weight	Index Numbers			% Change in Oct 2018 over			
		Oct 18	Sep 18	Oct 17	Sep 2018	Oct 2017		
General	100.0000	248.19	238.25	219.41	+	4.17	+	13.12
Agriculture Forestry & Fisher	25.7674	272.57	267.67	254.45	+	1.83	+	7.12
001 Wheat	0.6297	207.42	205.17	200.05	+	1.10	+	3.68
002 Maize	0.6764	214.53	228.81	191.03	-	6.24	+	12.30
003 Rice	2.4413	182.76	181.31	169.62	+	0.80	+	7.75
004 Sorghum / Jowar	0.0214	275.88	285.95	216.04	-	3.52	+	27.70
005 Millet / Bajra	0.0374	244.40	261.64	160.38	-	6.59	+	<u>52.39</u>
006 Vegetables	1.2441	356.04	338.79	431.44	+	5.09	-	17.48
007 Fresh Fruits	1.5144	277.92	266.54	257.11	+	4.27	+	8.09
008 Dry Fruits	0.2478	276.70	278.85	243.99	-	0.77	+	13.41
009 Cotton Seeds	1.1511	266.98	265.99	260.64	+	0.37	+	2.43
010 Other Oil Seeds	0.0722	197.75	195.43	190.07	+	1.19	+	4.04
011 Edible Roots / Potatoes	0.2540	214.22	199.17	266.89	+	7.56	-	19.73
012 Stimulant & Spice Crops	0.1634	333.36	319.25	292.37	+	4.42	+	14.02
013 Pulses	0.4901	231.09	231.62	263.60	-	0.23	-	12.33
014 Sugar Crops	1.0725	257.62	257.62	268.94	+	0.00	-	4.21
015 Fibre Crops	5.3169	266.15	262.70	198.59	+	1.31	+	34.02
016 Unmanufactured Tobacco	0.0742	318.02	318.02	296.90	+	0.00	+	7.11
017 Poultry	0.5633	203.44	143.93	178.79	+	41.35	+	13.79
018 Raw Milk from Bovine Animals	7.0279	285.82	285.13	272.70	+	0.24	+	4.81
019 Eggs	0.5034	233.62	201.16	213.03	+	16.14	+	9.67
020 Raw Animal Materials / Wool	0.0351	177.28	176.92	173.18	+	0.20	+	2.37
021 Hides & Fur Skins, Raw	0.4834	92.70	93.47	103.25	-	0.82	-	10.22
022 Fuel Wood in Logs	0.0179	284.65	284.65	282.69	+	0.00	+	0.69
023 Fish Live Fresh or Chilled	1.7295	461.53	453.67	450.77	+	1.73	+	2.39
Ores/Minerals, Elec., Gas & W	12.0389	293.55	244.76	242.97	+	19.93	+	20.82
024 Coal not Agglomerated	0.7508	155.29	155.29	155.29	+	0.00	+	0.00
025 Natural Gas Liquefied	5.7385	317.16	214.80	211.29	+	47.65	+	<u>50.11</u>
026 Salt & Pure Sodium Chloride	0.0584	271.87	271.87	248.46	+	0.00	+	9.42
027 Electrical Energy	5.4912	288.00	288.00	288.00	+	0.00	+	0.00
Food, Beverages, Tobacco, Textil	31.1122	248.54	243.64	226.01	+	2.01	+	9.97
Food Products, Beverages &	20.0718	255.14	248.81	236.32	+	2.54	+	7.96
028 Meat of Animals	3.4559	343.65	339.60	306.11	+	1.19	+	12.26
029 Vegetables & Fruit Juice	0.0058	228.62	228.62	224.22	+	0.00	+	1.96
030 Dried Fruits & Nuts	0.1733	302.31	302.02	269.70	+	0.10	+	12.09
031 Fruit Juices	0.3880	188.73	188.55	182.53	+	0.10	+	3.40
032 Vegetable Oils Refined	1.9242	160.00	159.08	155.12	+	0.58	+	3.15
033 Vegetable Ghee	1.5632	131.73	130.88	125.78	+	0.65	+	4.73
034 Oil Cakes	0.9611	246.07	240.72	222.38	+	2.22	+	10.65
035 Processed Liquid Milk	4.4437	296.92	296.67	284.79	+	0.08	+	4.26
036 Milk & Cream in Solid Form	0.0316	226.06	225.53	224.08	+	0.24	+	0.88
037 Ice Cream	0.0047	286.26	286.26	266.02	+	0.00	+	7.61
038 Dairy Products N.E.C	0.0117	283.94	282.17	264.15	+	0.63	+	7.49
039 Wheat Flour	2.3034	196.77	194.82	189.87	+	1.00	+	3.63
040 Other Cereal Flour	0.0604	216.08	218.82	226.42	-	1.25	-	4.57
041 Sugar Refined	1.7975	207.95	207.69	204.64	+	0.13	+	1.62
042 Chocolate	0.0139	100.00	100.00	100.00	+	0.00	+	0.00
043 Sugar Confectionary	0.0738	127.25	127.25	128.44	+	0.00	-	0.93
044 Coffee & Tea	0.7303	279.59	278.46	253.21	+	0.41	+	10.42
045 Spices	0.1449	222.23	213.13	202.06	+	4.27	+	9.98
046 Other Food Products	0.0336	308.13	300.74	294.50	+	2.46	+	4.63
047 Mineral Water	0.0207	210.16	210.16	208.51	+	0.00	+	0.79
048 Beverages	0.6303	176.55	176.55	172.85	+	0.00	+	2.14
049 Tobacco Products	1.2998	393.80	319.65	318.37	+	23.20	+	23.69
Textiles & Apparels	10.3289	236.00	236.54	207.78	-	0.23	+	13.58
050 Cotton Yarn	5.2491	252.78	253.93	202.18	-	0.45	+	25.03
051 Nylon Yarn	0.1719	143.99	143.99	143.99	+	0.00	+	0.00
052 Blended Yarn	0.1689	199.05	201.84	184.65	-	1.38	+	7.80
053 Woven Fabrics	0.0128	324.76	321.49	316.28	+	1.02	+	2.68
054 Cotton Fabrics	0.6343	220.63	219.87	211.50	+	0.35	+	4.32
055 Other Fabrics	1.1016	227.85	227.85	227.16	+	0.00	+	0.30
056 Silk & Reyon Fabrics	0.7350	188.81	188.81	188.14	+	0.00	+	0.36

Annexure – B: Wholesale Price Indices by Major Groups & Commodities

(2007-08=100)

Item and Specification	Weight	Index Numbers			% Change in Oct 2018 over	
		Oct 18	Sep 18	Oct 17	Sep 2018	Oct 2017
057 Towels	0.1235	305.52	305.52	276.14	+ 0.00	+ 10.64
058 Blankets	0.0029	267.72	267.72	247.38	+ 0.00	+ 8.22
059 Bed Sheets	0.0913	257.39	256.87	256.87	+ 0.20	+ 0.20
060 Quilts	0.0019	222.32	222.32	222.32	+ 0.00	+ 0.00
061 Woolen Carpets	0.0383	196.43	196.43	196.43	+ 0.00	+ 0.00
062 Synthetic Carpets	0.0566	131.80	131.80	130.95	+ 0.00	+ 0.65
063 Hosiery Products	0.8832	254.07	253.68	244.11	+ 0.15	+ 4.08
064 Readymade Garments	1.0576	204.85	204.85	201.37	+ 0.00	+ 1.73
Leather Products	0.7115	244.52	200.77	199.75	+ 21.79	+ 22.41
065 Leather Without Hair	0.2973	225.53	212.68	221.97	+ 6.04	+ 1.60
066 Other Leather N.E.C	0.2567	313.42	207.02	207.31	+ 51.40	+ 51.18
067 Footwears	0.1575	168.09	168.09	145.51	+ 0.00	+ 15.52
Other Transportable Goods	22.3659	217.85	213.10	173.59	+ 2.23	+ 25.50
068 Timber	0.0165	241.03	240.62	231.53	+ 0.17	+ 4.10
069 Printing Paper	0.4279	174.76	172.70	166.31	+ 1.19	+ 5.08
070 Hard Board	0.1579	291.67	291.67	225.00	+ 0.00	+ 29.63
071 Coke	0.2797	163.45	163.45	163.45	+ 0.00	+ 0.00
072 Motor Spirit	1.5336	156.81	156.81	124.14	+ 0.00	+ 26.32
073 Diesel Oil	5.2664	230.43	230.43	155.86	+ 0.00	+ 47.84
074 Kerosine Oil	0.2151	222.78	222.78	127.80	+ 0.00	+ 74.32
075 Furnace Oil	3.2664	193.09	172.10	110.73	+ 12.20	+ 74.38
076 Mobil Oil	0.7114	209.31	209.31	200.23	+ 0.00	+ 4.53
077 Chemicals	1.7720	215.90	213.09	177.12	+ 1.32	+ 21.89
078 Dyeing Material	0.1539	150.72	150.72	146.55	+ 0.00	+ 2.85
079 Fertilizers	2.8657	252.46	242.31	216.49	+ 4.19	+ 16.62
080 Pesticides	0.2763	312.32	312.32	306.92	+ 0.00	+ 1.76
081 Insecticides	0.1276	144.97	145.02	138.62	- 0.03	+ 4.58
082 Paints & Varnishes	0.1916	354.53	354.53	299.42	+ 0.00	+ 18.41
083 Medicines	1.1428	180.22	180.06	176.89	+ 0.09	+ 1.88
084 Soaps & Detergents	0.8168	195.41	193.52	191.45	+ 0.98	+ 2.07
085 Auto Tyres	0.2703	184.52	184.52	177.07	+ 0.00	+ 4.21
086 Plastic Products	0.4550	243.75	243.75	225.88	+ 0.00	+ 7.91
087 Glass sheets	0.2089	304.55	304.55	298.97	+ 0.00	+ 1.87
088 Other Glass Articles	0.1635	318.10	318.10	317.24	+ 0.00	+ 0.27
089 Ceramics & Sanitary Fixture	0.0244	243.24	243.24	232.65	+ 0.00	+ 4.55
090 Bricks, Blocks & Tiles	0.1566	231.36	225.43	222.47	+ 2.63	+ 4.00
091 Cement	1.8145	234.54	234.41	217.15	+ 0.06	+ 8.01
092 Bed Foam	0.0006	182.50	176.50	170.33	+ 3.40	+ 7.14
093 Matches	0.0505	171.36	171.36	171.36	+ 0.00	+ 0.00
Metal Product, Machinery & Eq	8.7156	190.04	187.64	177.34	+ 1.28	+ 7.16
094 Pig Iron	0.0593	128.97	128.97	128.97	+ 0.00	+ 0.00
095 Steel Bar & Sheets	1.4022	174.08	168.49	139.70	+ 3.32	+ 24.61
096 Pipe Fittings	0.0780	238.51	234.48	215.66	+ 1.72	+ 10.60
097 Steel Products	0.3879	183.86	183.35	179.41	+ 0.28	+ 2.48
098 Engines & Motors	0.0046	116.98	116.98	116.98	+ 0.00	+ 0.00
099 Vacuum Pumps	0.0155	123.69	123.69	123.69	+ 0.00	+ 0.00
100 Air Conditioners	0.0049	208.65	203.80	200.10	+ 2.38	+ 4.27
101 Cultivators	0.0551	190.66	190.66	190.66	+ 0.00	+ 0.00
102 Chuff Cutter	0.1293	153.46	153.46	153.46	+ 0.00	+ 0.00
103 Tractors	0.0028	216.82	216.82	201.75	+ 0.00	+ 7.47
104 Lathe Machines	0.0525	268.38	241.06	241.06	+ 11.33	+ 11.33
105 Concrete Mixture	0.0107	138.83	138.83	138.83	+ 0.00	+ 0.00
106 Fridge,WashM,SewM,Fans,Iron	1.1645	238.78	229.31	214.97	+ 4.13	+ 11.08
107 Electric Wires	0.0912	208.22	208.22	205.92	+ 0.00	+ 1.12
108 Lighting Equipments	1.4431	174.04	174.04	170.98	+ 0.00	+ 1.79
109 Radio & Television	0.1843	140.42	140.42	140.42	+ 0.00	+ 0.00
110 Motor Vehicles	0.0244	221.80	218.11	195.36	+ 1.69	+ 13.53
111 Motorcycles	0.2570	134.21	134.21	125.89	+ 0.00	+ 6.61
112 Bicycles	3.3483	194.31	194.31	187.65	+ 0.00	+ 3.55

CPI by Income Quintiles and Commodity Groups (2007-08=100) Oct 2018 (% diff with Sep 2018)

Income Quintiles	General	Food and non-alcoholic Beverages	Alcoholic Beverages, Tobacco	Clothing and footwear	Housing, water, Elec., Gas and other fuels	Furnishing and household equipment maintenance	Health	Transport	Communication	Recreation and culture	Education	Restaurants and hotels	Misc. goods and services
------------------	---------	----------------------------------	------------------------------	-----------------------	--	--	--------	-----------	---------------	------------------------	-----------	------------------------	--------------------------

All Urban**Combined**

Aggregate	2.33	1.57	9.42	0.29	3.91	0.88	3.20	2.34	7.23	1.72	0.42	0.52	1.55
Income Quintile 1	1.36	1.41	9.44	0.26	1.03	0.88	3.30	1.41	2.98	0.40	0.28	0.43	0.91
Income Quintile 2	1.47	1.48	9.45	0.28	1.39	0.91	3.26	1.28	3.60	0.49	0.30	0.44	0.90
Income Quintile 3	1.48	1.53	9.56	0.28	1.19	0.92	3.20	1.35	4.47	0.66	0.39	0.47	1.05
Income Quintile 4	2.61	1.61	9.67	0.29	5.28	0.93	3.15	1.35	5.97	1.04	0.35	0.50	1.17
Income Quintile 5	3.15	1.61	9.19	0.30	6.07	0.86	3.19	2.82	8.60	2.65	0.46	0.55	2.01

CPI by Income Quintiles and Commodity Groups (2007-08=100) Oct 2018 (% diff with Oct 2017)

Income Quintiles	General	Food and non-alcoholic Beverages	Alcoholic Beverages, Tobacco	Clothing and footwear	Housing, water, Elec., Gas and other fuels	Furnishing and household equipment maintenance	Health	Transport	Communication	Recreation and culture	Education	Restaurants and hotels	Misc. goods and services
------------------	---------	----------------------------------	------------------------------	-----------------------	--	--	--------	-----------	---------------	------------------------	-----------	------------------------	--------------------------

All Urban**Combined**

Aggregate	6.78	2.04	12.68	6.74	9.04	6.99	9.22	18.61	7.78	8.59	11.54	4.77	8.72
Income Quintile 1	3.94	0.85	11.26	6.84	5.77	7.13	8.62	22.12	3.70	6.63	11.54	3.29	6.46
Income Quintile 2	4.52	1.30	11.36	6.80	6.04	7.17	8.87	20.43	4.12	6.78	11.60	3.56	6.51
Income Quintile 3	4.94	1.59	11.89	6.78	5.94	7.19	8.97	19.24	4.91	7.11	11.75	4.08	7.06
Income Quintile 4	6.59	1.93	12.71	6.72	10.20	7.21	9.12	18.60	6.39	7.68	11.68	4.54	7.46
Income Quintile 5	8.57	2.75	13.46	6.69	11.51	6.88	9.50	18.31	9.20	9.91	11.48	5.21	10.30