



Monthly Review on Price Indices



November, 2018
(Base 2007-08)

Government of Pakistan
Ministry of Statistics
Pakistan Bureau of Statistics
Islamabad

Inflation in Brief

1. CPI inflation General increased by 6.5% on year-on-year basis in November 2018 as compared to an increase of 6.8% in the previous month and 4.0% in November 2017. On month-on-month basis, it increased by 0.1% in November 2018 as compared to an increase of 2.3% in the previous month and increase of 0.4% in November 2017.
2. Core inflation measured by non-food non-energy CPI (Core NFNE) increased by 8.3% on (YoY) basis in November 2018 as compared to an increase of 8.2% in the previous month and 5.5% in November 2017. On (MoM) basis, it increased by 0.4% in November 2018 as compared to an increase of 1.1% in previous month, and an increase of 0.3% in corresponding month of last year i.e. November 2017.
3. Core inflation, measured by 20% weighted trimmed mean CPI (Core Trimmed) increased by 6.7% on (YoY) basis in November 2018 as compared to 6.7% in the previous month and by 4.2% in November 2017. On (MoM) basis, it increased by 0.3% in November 2018 as compared to an increase of 0.8% in the previous month and an increase of 0.3% in corresponding month of last year i.e. November 2017.
4. The CPI by Income Quintiles and Commodity Groups for November 2018 (MoM and YoY) is placed at Annexure-C.
5. SPI inflation on YoY basis increased by 1.3% in November 2018 as compared to an increase of 1.3% a month earlier and an increase of 2.1% in November 2017. On MoM basis, it increased by 0.3% in November 2018 as compared to an increase of 1.1% a month earlier and an increase of 0.3% in November 2017.
6. WPI inflation on YoY basis increased by 13.5% in November 2018 as compared to an increase of 13.1% a month earlier and an increase of 2.9% in November 2017. WPI inflation on MoM basis increased by 0.7% in November 2018 as compared to a increase of 4.2% a month earlier and an increase of 0.4% in corresponding month of last year i.e. November 2017.
7. Figures 1 and 2 show graphically the data of Table1. Table1.1 shows "Period Average" and "YoY" percent changes in indices of three years.

Table 1: Inflation (%) (Base 2007-08)														
Period	CPI						Core Inflation				SPI**		WPI	
	General		Food		Non-food		NFNE*		Trimmed		YoY	MoM	YoY	MoM
	YoY	MoM	YoY	MoM	YoY	MoM	YoY	MoM	YoY	MoM				
Oct-17	3.8	0.7	2.2	0.6	4.9	0.8	5.3	0.9	4.0	0.6	2.1	0.9	2.3	0.6
Nov-17	4.0	0.4	2.4	0.4	5.1	0.4	5.5	0.3	4.2	0.3	2.1	0.3	2.9	0.4
Dec-17	4.6	-0.1	3.8	-0.6	5.1	0.2	5.5	0.2	4.7	0.2	2.2	-0.7	3.4	0.4
Jan-18	4.4	0.0	3.7	-1.0	4.9	0.8	5.2	0.8	4.6	0.6	2.0	-1.0	4.7	1.8
Feb-18	3.8	-0.3	2.2	-1.1	4.9	0.2	5.2	0.2	4.3	0.1	0.5	-1.2	4.1	-0.1
Mar-18	3.2	0.3	0.1	-0.3	5.4	0.7	5.8	0.7	4.1	0.2	-1.8	-0.6	3.6	0.2
Apr-18	3.7	1.8	-0.2	1.5	6.4	2.1	7.0	2.5	5.0	1.6	-0.5	0.4	4.0	1.3
May-18	4.2	0.5	1.0	1.0	6.4	0.2	7.0	0.2	5.1	0.3	0.5	0.1	5.6	1.3
Jun-18	5.2	0.6	3.0	0.8	6.7	0.4	7.1	0.3	5.4	0.2	1.9	1.8	7.6	1.5
Jul-18	5.8	0.9	3.5	0.6	7.4	1.2	7.6	1.2	5.9	0.9	3.6	1.2	10.5	2.4
Aug-18	5.8	0.2	3.3	0.2	7.6	0.2	7.7	0.2	5.9	0.2	3.3	0.2	11.0	0.8
Sep-18	5.1	-0.1	1.4	-0.7	7.7	0.3	8.0	0.4	5.8	0.1	1.0	-0.1	9.2	-1.5
Oct-18	6.8	2.3	2.7	1.9	9.6	2.6	8.2	1.1	6.7	0.8	1.3	1.1	13.1	4.2
Nov-18	6.5	0.1	1.8	-0.5	9.8	0.5	8.3	0.4	6.7	0.3	1.3	0.3	13.5	0.7

*NFNE is non-food non-energy, ** SPI for quintile 1. Digits 0.0* are due to rounding off.

Table 1.1 : Period Average and YoY % Changes of Indices (Base 2007-08)						
Index	Average July - November % changes			November over November % changes		
	2018-19	2017-18	2016-17	2018	2017	2016
CPI	6.02	3.59	3.92	6.50	3.97	3.81
SPI	2.08	1.14	1.51	1.26	2.13	0.61
WPI	11.48	1.69	3.05	13.50	2.86	2.56

Figure 1: CPI Inflation YoY, Special Indices

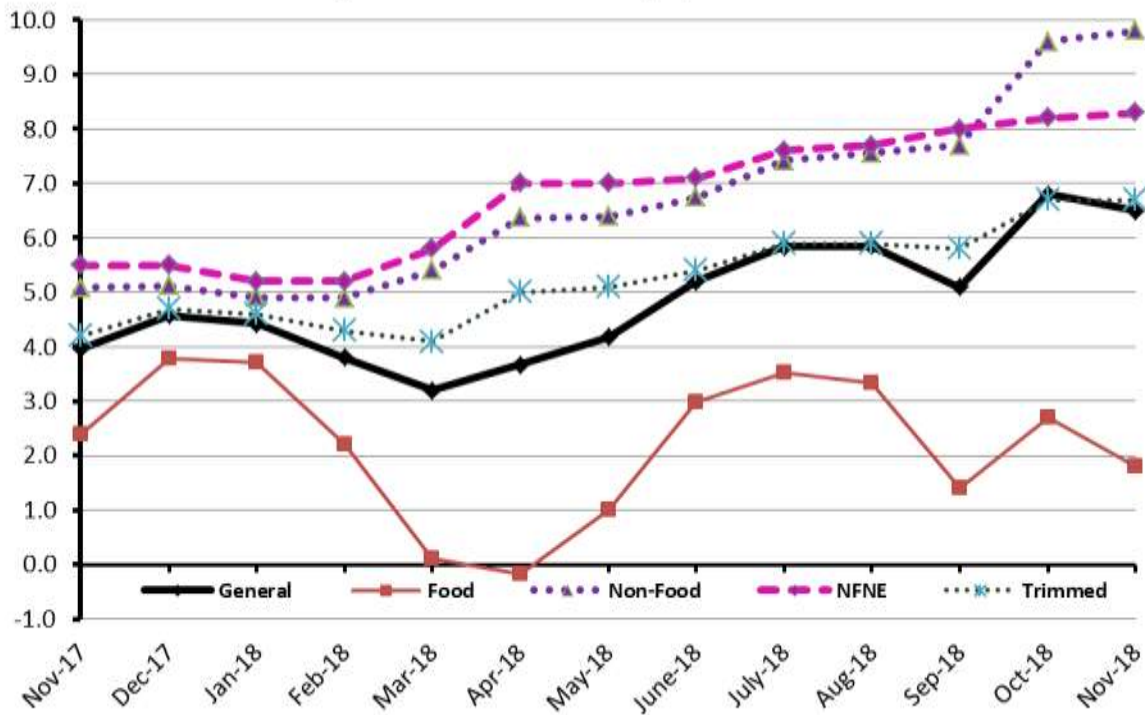
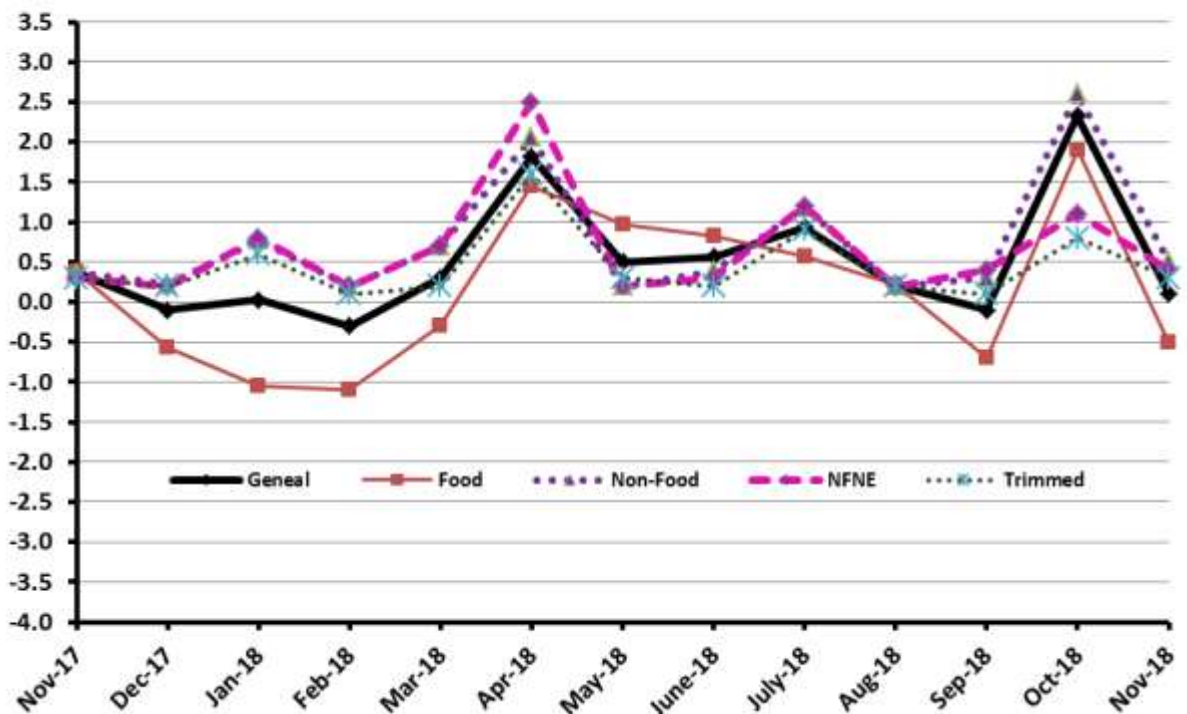


Figure 2: CPI Inflation MoM, Special Indices



I. Consumer Price Index (CPI)

The Consumer Price Index of November, 2018 is increased by 0.11% over October 2018 and increased by 6.50% over corresponding month of the last year i.e. November 2017.

Table 2 : Consumer Price Index by Group of Commodities and Services (Base 2007-08)

No	Group	Group Weight (%)	Indices			% Change November 2018 Over		Impact (In % points) November 2018 Over	
			Nov 2018	Oct 2018	Nov 2017	Oct 2018	Nov 2017	Oct 2018	Nov 2017
	General	100.00	234.75	234.49	220.42	0.11	6.50	0.11	6.50
1.	Food & Non-alcoholic Bev.	34.83	239.03	240.50	236.61	-0.61	1.02	-0.22	0.38
	<i>Non-perishable Food Items</i>	29.84	241.01	238.09	227.94	1.23	5.73	0.37	1.77
	<i>Perishable Food Items</i>	4.99	227.24	254.86	288.45	-10.84	-21.22	-0.59	-1.39
2.	Alcoholic Bev. & Tobacco	1.41	348.01	344.03	305.50	1.16	13.91	0.02	0.27
3.	Clothing & Footwear	7.57	259.07	256.09	241.01	1.16	7.49	0.10	0.62
4.	Housing, Water, Electricity, Gas & Fuels	29.41	219.24	219.07	200.94	0.08	9.11	0.02	2.44
5.	Furnishing & Household Equipment Maintenance	4.21	247.76	245.51	230.52	0.92	7.48	0.04	0.33
6.	Health	2.19	235.08	234.02	214.81	0.45	9.44	0.01	0.20
7.	Transport	7.20	213.81	210.00	178.51	1.81	19.77	0.12	1.15
8.	Communication	3.22	143.57	143.45	133.14	0.08	7.83	0.00	0.15
9.	Recreation & Culture	2.02	214.35	213.73	197.17	0.29	8.71	0.01	0.16
10.	Education	3.94	288.62	288.62	262.35	0.00	10.01	0.00	0.47
11.	Restaurants & Hotels	1.23	298.19	297.40	284.76	0.27	4.72	0.00	0.07
12.	Miscellaneous	2.76	272.18	271.43	252.28	0.28	7.89	0.01	0.25

Main contributors to month-on-month and year-on-year percentage changes are given below and detail is given in Annexure A.

1. Month-on-month Top few commodities which varied from previous month are given below: -

Food Increased: Chicken (14.78%), Eggs (10.20%), Potatoes (6.99%), Fish (4.03%), Pulse Mash (3.60%), Pulse Moong (2.00%) and Dry Fruits (1.73%).

Decreased: Tomatoes (43.72%), Fresh Vegetables (11.50%), Fresh Fruits (7.56%) and Onion (7.51%).

Non-food Items Increased: Woolen Readymade Garments (4.69%), Motor Fuel (4.09%), Woolen Cloths (3.37%), Kerosene Oil (2.33%), Motor Vehicles (2.18%) and Construction Wage Rates (1.80%).

Non-food Decreased: Personal Equipments (0.09%).

Year-on-Year: Top few commodities which varied from previous year i.e. November, 2017 are given below:-

Food Increased: Chicken (44.46%), Spices (13.95%), Meat (12.69%), Cigarettes (12.26%), Dry Fruits (10.45%), Tea (9.35%) and Rice (9.28%).

Decreased: Tomatoes (61.30%), Onion (58.10%), Potatoes (20.26%), Pulse Mash (12.15%), Gram Whole (10.56%) and Eggs (10.35%).

Non-food Increased: Gas (85.31%), Kerosene Oil (28.81%), Motor Fuel (28.73%), Newspapers (27.55%), Transport Services (17.87%), Motor Vehicles (14.44%), Water Supply (13.62%), Doctor (MBBS) Clinic Fee (13.39%), Construction Input Items (12.47%), Cosmetics (11.40%), Construction Wage Rates (11.10%), Utensils (10.88%), Stationery (10.17%) and Education (10.01%).

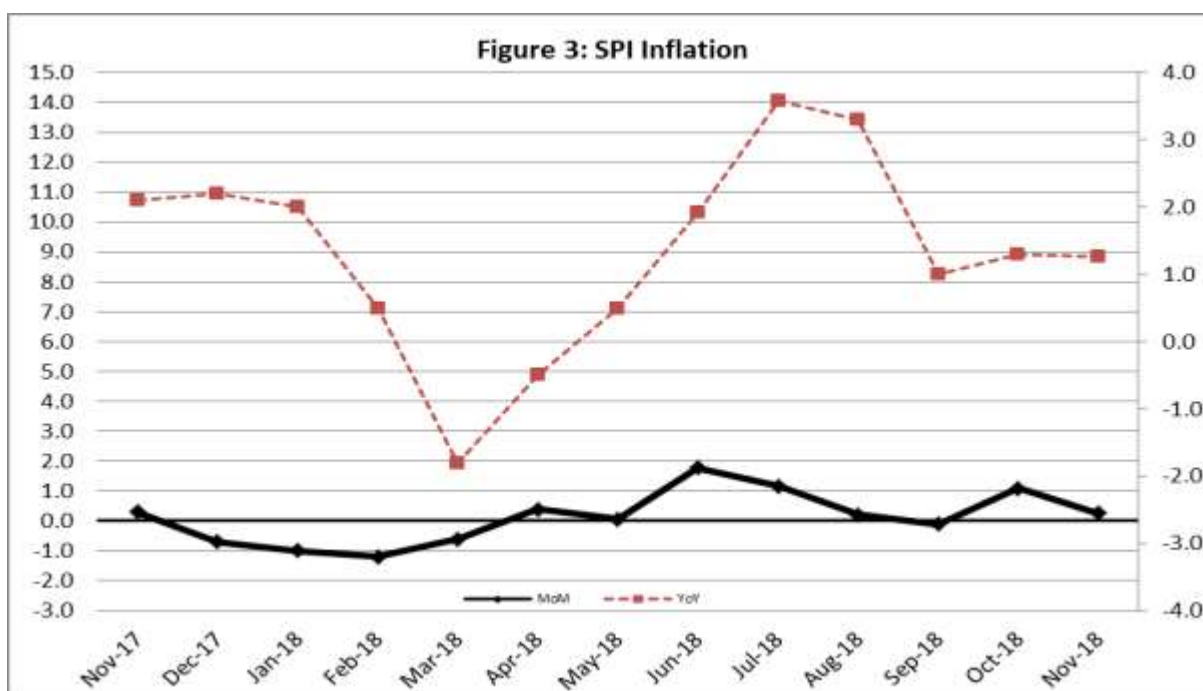
II. Sensitive Price Indicator

Quintile-wise percentage changes YoY and MoM are given below in Table 3. The series from November 2017 to November 2018 is also graphed below in Figure 3.

Table 3: Sensitive Price Indicator (Base 2007-08)					
Quintiles	Indices			% Change November, 2018 over	
	November, 2018	October, 2018	November, 2017	October, 2018	November, 2017
1	219.66	219.09	216.93	0.26	1.26
2	229.04	228.03	224.40	0.44	2.07
3	230.97	229.72	225.65	0.54	2.36
4	243.15	239.75	229.75	1.42	5.83
5	248.74	242.86	226.63	2.42	9.76
Combined	238.35	235.22	226.29	1.33	5.33

Table 3.1 : Weekly Percentage Change of SPI During November, 2018

Quintiles	% Change with Previous week				
	29.11.2018	22.11.2018	15.11.2018	08.11.2018	01.11.2018
Quintile 1	0.08	0.01	0.41	0.19	-0.21
Combined	0.15	0.08	0.42	0.20	0.22



III. Wholesale Price Index

The Wholesale Price Index for November, 2018 increased 0.70% over October, 2018. It increased by 13.50% over the corresponding month of the last year. YoY and MoM movements, from November, 2017 to November, 2018 are also graphed below in Figure 4.

Table 4 : Wholesale Price Index by Group of Commodities (Base 2007-08)

No.	Group	Group Weight (%)	Indices			% Change Nov, 2018 over		Impact (in %age points) Nov, 2018 over	
			Nov. 2018	Oct. 2018	Nov, 2017	Oct. 2018	Nov, 2017	Oct. 2018	Nov, 2017
	General	100.00	249.92	248.19	220.20	0.70	13.50	0.70	13.50
1.	Agriculture, Forestry & Fishery Products	25.77	271.62	272.57	252.96	-0.35	7.38	-0.10	2.18
2.	Ores & Minerals, Electricity, Gas & Water	12.04	293.14	293.55	243.05	-0.14	20.61	-0.02	2.74
3.	Food Products, Beverages & Tobacco, Textiles, Apparel & Leather Products	31.11	249.98	248.54	227.21	0.58	10.02	0.18	3.22
	i. Food Products, Bev. & Tobacco	20.07	255.75	255.14	237.59	0.24	7.64	0.05	1.66
	ii. Textiles and Apparel	10.33	238.88	236.00	209.22	1.22	14.18	0.12	1.39
	iii. Leather Products	0.71	248.38	244.52	195.77	1.58	26.87	0.01	0.17
4.	Other Transportable Goods except Metal Products, Machinery & Equipment	22.37	224.71	217.85	176.98	3.15	26.97	0.62	4.85
5.	Metal Products, Machinery & Equipment	8.72	190.55	190.04	177.63	0.27	7.27	0.02	0.51

Main contributors to month-on-month and year-on-year percentage changes are given below and detail is given in Annexure B.

1. **Month-on-month** Top few commodities which varied from previous month i.e. October, 2018 are given below:-

Increased: Poultry (18.68%), Eggs (8.88%), Potatoes (8.42%), Diesel (7.24%), Fibre Crops (6.92%), Petrol (5.39%), Tractors (4.66%), Bed Sheets (4.36%), Woven Fabrics (4.24%), Readymade Garments (4.06%), Kerosene Oil (3.68%), Milk & Cream in Solid Form (2.93%), Furnace Oil (2.90%), Glass Sheets (2.58%), Dairy Products (2.47%), Blankets & Maize (2.19%) each, Other Leather N.E.C (2.15%), Fertilizers (2.11%), Wheat (2.09%), Cement (2.08%), Other Cereal Flour (2.07%), Wool (1.96%) and Fire Wood (1.77%).

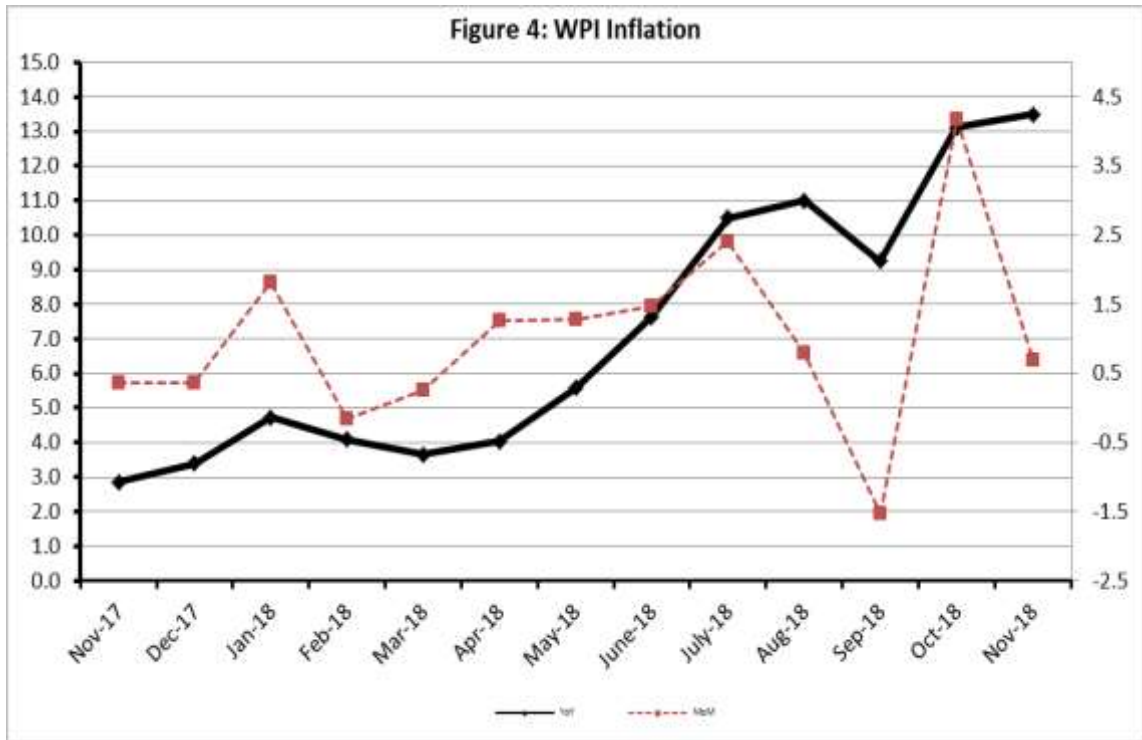
Decreased: Vegetables (28.23%), Fresh Fruits (10.18%), Bajra (2.09%), Other Oil Seeds (1.90%), Blended Yarn (1.71%) and Mineral Water (1.41%).

2. **Year-on-year** Top few commodities which varied from previous year i.e. November, 2017 are given below:-

Increased: Furnace Oil (77.16%), Kerosene Oil (63.05%), Other Leather N.E.C (54.65%), Poultry (53.05%), Natural Gas (49.56%), Diesel (48.82%), Bajra (41.18%), Fibre Crops (36.19%), Hard Board (29.63%), Jowar (29.19%), Petrol (28.76%), Steel Bar & Sheets (25.83%), Cotton Yarn (25.13%), Tobacco Products (23.69%), Paints & Varnishes (19.73%), Chemicals (19.70%), Stimulant & Spice Crops (17.97%), Fertilizers (17.18%), Fresh Fruits (15.58%), Footwears (15.52%), Motor Vehicles (14.63%), Maize (13.60%), Meat (13.05%) Cement (12.57%) and Tractors (12.48%).

Decreased: Vegetables (13.19%), Potatoes (14.32%), Eggs (11.97%), Hides & Fur Skins, Raw (10.46%).and Pulses (10.28%).

Figure 4: WPI Inflation



Annexure – A: CPI by Commodity Groups and Commodities (2007-08=100)

Item and Specification	Weight	Index Numbers			% Change in Nov 2018 over			
		Nov 2018	Oct 2018	Nov 2017	Oct 2018	Nov 2017		
<i>General</i>	100.00	234.75	234.49	220.42	+	0.11	+	6.50
<i>Food and non-alcoholic Beverages</i>	34.834	239.03	240.50	236.61	-	0.61	+	1.02
1 Wheat	0.3477	206.42	203.64	200.97	+	1.37	+	2.71
2 Wheat Flour	4.1648	215.36	214.19	211.55	+	0.55	+	1.80
3 Wheat Product	0.0959	215.82	214.54	213.19	+	0.60	+	1.23
4 Besan	0.1500	266.48	267.01	280.28	-	0.20	-	4.92
5 Rice	1.5821	199.78	200.65	182.82	-	0.43	+	9.28
6 Cereals	0.1563	265.77	264.48	257.56	+	0.49	+	3.19
7 Bakery & Confectionary	1.1550	229.76	229.04	221.90	+	0.31	+	3.54
8 Nimco	0.4574	261.15	260.78	256.90	+	0.14	+	1.65
9 Meat	2.4303	322.09	318.04	285.83	+	1.27	+	12.69
10 Chicken	1.3596	222.68	194.00	154.15	+	14.7	+	44.46
11 Fish	0.2970	228.89	220.02	217.74	+	4.03	+	5.12
12 Milk Fresh	6.6800	287.73	286.97	277.08	+	0.26	+	3.84
13 Milk Products	0.6338	279.73	278.92	268.37	+	0.29	+	4.23
14 Milk Powder	0.1129	251.43	248.64	236.83	+	1.12	+	6.16
15 Eggs	0.4555	244.95	222.28	273.24	+	10.2	-	10.35
16 Mustard Oil	0.0952	165.01	164.90	161.96	+	0.07	+	1.88
17 Cooking Oil	1.7538	143.37	142.23	138.58	+	0.80	+	3.46
18 Vegetable Ghee	2.0714	149.98	148.48	143.68	+	1.01	+	4.38
19 Dry Fruits	0.2543	297.85	292.79	269.66	+	1.73	+	10.45
20 Fresh Fruits	1.8649	225.16	243.57	224.34	-	7.56	+	0.37
21 Pulse Masoor	0.2712	159.97	158.64	168.46	+	0.84	-	5.04
22 Pulse Moong	0.2336	222.86	218.49	222.21	+	2.00	+	0.29
23 Pulse Mash (Washed)	0.2098	212.68	205.28	242.09	+	3.60	-	12.15
24 Pulse Gram	0.2361	268.87	266.59	269.96	+	0.86	-	0.40
25 Gram Whole	0.1616	265.08	265.11	296.37	-	0.01	-	10.56
26 Beans	0.0269	250.39	246.97	242.81	+	1.38	+	3.12
27 Potatoes	0.4452	230.55	215.48	289.11	+	6.99	-	20.26
28 Onion	0.5093	200.31	216.58	478.11	-	7.51	-	<u>58.10</u>
29 Tomatoes	0.4172	135.42	240.62	349.90	-	43.7	-	<u>61.30</u>
30 Fresh Vegetables	1.7543	257.83	291.33	287.30	-	11.5	-	10.26
31 Sugar	1.0445	197.86	197.97	193.86	-	0.06	+	2.06
32 Gur	0.0220	260.99	262.49	259.06	-	0.57	+	0.75
33 Honey	0.0446	361.11	356.59	338.91	+	1.27	+	6.55
34 SweetMeat	0.2483	274.99	273.59	254.71	+	0.51	+	7.96
35 Beverages	1.1990	234.44	235.01	226.48	-	0.24	+	3.51
36 Jam, Tomato Ketchup & Pickles	0.2454	236.33	235.37	223.06	+	0.41	+	5.95
37 Condiments	0.2656	289.66	288.04	273.73	+	0.56	+	5.82
38 Spices	0.5441	272.35	269.25	239.01	+	1.15	+	13.95
39 Tea	0.8377	310.54	308.83	283.98	+	0.55	+	9.35
<i>Alcoholic Beverages, Tobacco</i>	1.4135	348.00	344.03	305.51	+	1.15	+	13.91
40 Cigarettes	1.3906	343.62	339.42	306.09	+	1.24	+	12.26
41 Betel Leaves & Nuts	0.0229	614.21	623.88	270.67	-	1.55	+	126.92
<i>Clothing and footwear</i>	7.5708	259.07	256.10	241.01	+	1.16	+	7.49
42 Cotton Cloth	1.7286	250.74	249.22	234.28	+	0.61	+	7.03
43 Woolen Cloth	0.8759	277.56	268.51	259.17	+	3.37	+	7.10
44 Readymade Garments	0.9739	267.64	266.32	248.53	+	0.50	+	7.69
45 Woolen Readymade Garments	0.3964	280.10	267.56	263.43	+	4.69	+	6.33
46 Hosiery	0.5094	272.44	269.25	252.67	+	1.18	+	7.82

Annexure A: CPI by Commodity Groups and Commodities (2007-08=100)

Item and Specification	Weight	Index Numbers			% Change in Nov 2018 over			
		Nov 2018	Oct 2018	Nov 2017	Oct 2018	Nov 2017		
47 Dopatta	0.4412	271.05	267.69	248.38	+	1.26	+	9.13
48 Cleaning and Laundry	0.2110	295.39	293.09	273.92	+	0.78	+	7.84
49 Tailoring	0.8840	353.67	351.86	328.50	+	0.51	+	7.66
50 Footwear	1.5504	180.49	180.14	167.51	+	0.19	+	7.75
<u>Housing, water, Elec., Gas and other</u>	29.4149	219.24	219.07	200.94	+	0.08	+	9.11
51 House Rent	21.8149	207.09	207.09	194.05	+	0.00	+	6.72
52 Construction Input Items	0.5623	289.23	285.53	257.16	+	1.30	+	12.47
53 Construction Wage Rates	0.3331	276.45	271.55	248.82	+	1.80	+	11.10
54 Water Supply	0.4971	194.95	194.95	171.58	+	0.00	+	13.62
55 Electricity	4.3985	238.10	238.10	238.10	+	0.00	+	0.00
56 Gas	1.5756	292.94	292.94	158.08	+	0.00	+	<u>85.31</u>
57 Kerosene Oil	0.0057	278.21	271.88	215.98	+	2.33	+	28.81
58 Firewood Whole	0.2277	303.78	299.07	295.15	+	1.57	+	2.92
<u>Furnishing and household</u>	4.2082	247.76	245.50	230.52	+	0.92	+	7.48
59 Furniture	0.3315	244.56	242.25	223.87	+	0.95	+	9.24
60 Household Textiles	0.6489	248.54	245.96	233.22	+	1.05	+	6.57
61 Household Equipment	0.5936	196.96	194.50	183.57	+	1.26	+	7.29
62 Utensils	0.3212	262.52	259.94	236.75	+	0.99	+	10.88
63 Plastic Products	0.2547	233.84	231.09	215.02	+	1.19	+	8.75
64 Washing Soaps & Detergents	0.7893	252.39	248.45	233.40	+	1.59	+	8.14
65 Sewing Needle & Dr Cell	0.1496	223.94	223.03	209.80	+	0.41	+	6.74
66 Household Servant	1.0432	274.20	273.41	258.89	+	0.29	+	5.91
67 Marriage Hall Charges	0.0762	272.04	271.76	249.98	+	0.10	+	8.82
<u>Health</u>	2.1868	235.09	234.03	214.79	+	0.45	+	9.45
68 Drugs & Medicines	1.2667	198.54	197.59	186.14	+	0.48	+	6.66
69 Medical Equipments	0.0080	266.60	263.99	253.69	+	0.99	+	5.09
70 Doctor (MBBS) Clinic Fee	0.5904	320.01	318.34	282.22	+	0.52	+	13.39
71 Medical Tests	0.3217	222.39	222.03	202.91	+	0.16	+	9.60
<u>Transport</u>	7.2023	213.81	210.00	178.51	+	1.81	+	19.77
72 Motor Vehicles	0.6630	203.52	200.53	177.84	+	1.49	+	14.44
73 Motor Vehicle Accessories	0.2439	229.64	224.74	214.98	+	2.18	+	6.82
74 Motor Fuel	3.0269	196.83	189.09	152.90	+	4.09	+	28.73
75 Mechanical Service	0.4552	248.80	248.46	233.00	+	0.14	+	6.78
76 Motor Vehicle Tax	0.1099	210.18	210.18	210.18	+	0.00	+	0.00
77 Transport Services	2.7034	228.18	227.93	193.59	+	0.11	+	17.87
<u>Communication</u>	3.2198	143.57	143.45	133.14	+	0.08	+	7.83
78 Postal Services	0.0662	272.63	272.57	253.38	+	0.02	+	7.60
79 Communication & Apparatus	3.1536	140.86	140.74	130.62	+	0.09	+	7.84
<u>Recreation and culture</u>	2.0227	214.34	213.73	197.14	+	0.29	+	8.72
80 Recreation & Culture	0.8634	137.58	137.39	130.03	+	0.14	+	5.81
81 Text Books	0.5706	304.92	304.61	287.98	+	0.10	+	5.88
82 Newspapers	0.1934	235.21	235.21	184.40	+	0.00	+	27.55
83 Stationery	0.3953	241.07	238.80	218.82	+	0.95	+	10.17
<u>Education</u>	3.9431	288.62	288.62	262.35	+	0.00	+	10.01
84 Education	3.9431	288.62	288.62	262.35	+	0.00	+	10.01
<u>Restaurants and hotels</u>	1.2286	298.18	297.39	284.76	+	0.27	+	4.71
85 Readymade Food	1.2286	298.18	297.39	284.76	+	0.27	+	4.71
<u>Misc. goods and services</u>	2.7550	272.19	271.44	252.27	+	0.28	+	7.90
86 Personal Care	1.4935	245.08	244.22	231.98	+	0.35	+	5.65
87 Cosmetics	0.3853	230.19	227.83	206.64	+	1.04	+	11.40
88 Blades	0.0322	210.38	206.96	200.95	+	1.65	+	4.69
89 Personal Equipments	0.8440	341.68	341.98	310.95	-	0.09	+	9.88

Annexure B: Wholesale Price Indices by Major Groups & Commodities

(2007-08=100)

Item and Specification	Weight	Index Numbers			% Change in Nov 2018 over	
		Nov 18	Oct 18	Nov 17	Oct 2018	Nov 2017
General	100.0000	249.92	248.19	220.20	+ 0.70	+ 13.50
Agriculture Forestry & Fisher	25.7674	271.62	272.57	252.96	- 0.35	+ 7.38
001 Wheat	0.6297	211.76	207.42	205.94	+ 2.09	+ 2.83
002 Maize	0.6764	219.23	214.53	192.98	+ 2.19	+ 13.60
003 Rice	2.4413	183.58	182.76	167.04	+ 0.45	+ 9.90
004 Sorghum / Jowar	0.0214	279.91	275.88	216.66	+ 1.46	+ 29.19
005 Millet / Bajra	0.0374	239.29	244.40	169.49	- 2.09	+ 41.18
006 Vegetables	1.2441	255.52	356.04	382.44	- 28.23	- 33.19
007 Fresh Fruits	1.5144	249.64	277.92	215.99	- 10.18	+ 15.58
008 Dry Fruits	0.2478	275.15	276.70	248.97	- 0.56	+ 10.52
009 Cotton Seeds	1.1511	265.86	266.98	254.01	- 0.42	+ 4.67
010 Other Oil Seeds	0.0722	194.00	197.75	194.39	- 1.90	- 0.20
011 Edible Roots / Potatoes	0.2540	232.25	214.22	271.08	+ 8.42	- 14.32
012 Stimulant & Spice Crops	0.1634	331.71	333.36	281.17	- 0.49	+ 17.97
013 Pulses	0.4901	233.92	231.09	260.73	+ 1.22	- 10.28
014 Sugar Crops	1.0725	257.62	257.62	268.94	+ 0.00	- 4.21
015 Fibre Crops	5.3169	284.57	266.15	208.95	+ 6.92	+ 36.19
016 Unmanufactured Tobacco	0.0742	322.03	318.02	297.10	+ 1.26	+ 8.39
017 Poultry	0.5633	241.45	203.44	157.76	+ 18.68	+ 53.05
018 Raw Milk from Bovine Animals	7.0279	285.82	285.82	272.70	+ 0.00	+ 4.81
019 Eggs	0.5034	254.37	233.62	288.96	+ 8.88	- 11.97
020 Raw Animal Materials / Wool	0.0351	180.75	177.28	173.53	+ 1.96	+ 4.16
021 Hides & Fur Skins, Raw	0.4834	92.92	92.70	103.77	+ 0.24	- 10.46
022 Fuel Wood in Logs	0.0179	289.68	284.65	282.69	+ 1.77	+ 2.47
023 Fish Live Fresh or Chilled	1.7295	462.45	461.53	457.89	+ 0.20	+ 1.00
Ores/Minerals, Elec., Gas & W	12.0389	293.14	293.55	243.05	- 0.14	+ 20.61
024 Coal not Agglomerated	0.7508	155.29	155.29	155.29	+ 0.00	+ 0.00
025 Natural Gas Liquified	5.7385	316.26	317.16	211.46	- 0.28	+ 49.56
026 Salt & Pure Sodium Chloride	0.0584	275.23	271.87	248.46	+ 1.24	+ 10.77
027 Electrical Energy	5.4912	288.00	288.00	288.00	+ 0.00	+ 0.00
Food, Beverages, Tobacco, Textil	31.1122	249.98	248.54	227.21	+ 0.58	+ 10.02
Food Products, Beverages &	20.0718	255.75	255.14	237.59	+ 0.24	+ 7.64
028 Meat of Animals	3.4559	346.05	343.65	306.11	+ 0.70	+ 13.05
029 Vegetables & Fruit Juice	0.0058	228.62	228.62	224.22	+ 0.00	+ 1.96
030 Dried Fruits & Nuts	0.1733	306.71	302.31	281.80	+ 1.46	+ 8.84
031 Fruit Juices	0.3880	188.81	188.73	182.53	+ 0.04	+ 3.44
032 Vegetable Oils Refined	1.9242	161.51	160.00	154.34	+ 0.94	+ 4.65
033 Vegetable Ghee	1.5632	132.81	131.73	126.25	+ 0.82	+ 5.20
034 Oil Cakes	0.9611	244.02	246.07	228.88	- 0.83	+ 6.61
035 Processed Liquid Milk	4.4437	296.92	296.92	286.83	+ 0.00	+ 3.52
036 Milk & Cream in Solid Form	0.0316	232.69	226.06	223.74	+ 2.93	+ 4.00
037 Ice Cream	0.0047	286.26	286.26	266.02	+ 0.00	+ 7.61
038 Dairy Products N.E.C	0.0117	290.96	283.94	264.68	+ 2.47	+ 9.93
039 Wheat Flour	2.3034	196.58	196.77	195.25	- 0.10	+ 0.68
040 Other Cereal Flour	0.0604	220.56	216.08	226.05	+ 2.07	- 2.43
041 Sugar Refined	1.7975	207.53	207.95	202.58	- 0.20	+ 2.44
042 Chocolate	0.0139	100.00	100.00	100.00	+ 0.00	+ 0.00
043 Sugar Confectionary	0.0738	127.25	127.25	128.44	+ 0.00	- 0.93
044 Coffee & Tea	0.7303	281.25	279.59	253.35	+ 0.59	+ 11.01
045 Spices	0.1449	222.28	222.23	201.96	+ 0.02	+ 10.06
046 Other Food Products	0.0336	308.63	308.13	294.50	+ 0.16	+ 4.80
047 Mineral Water	0.0207	207.20	210.16	207.93	- 1.41	- 0.35
048 Beverages	0.6303	176.55	176.55	172.85	+ 0.00	+ 2.14
049 Tobacco Products	1.2998	393.80	393.80	318.37	+ 0.00	+ 23.69
Textiles & Apparels	10.3289	238.88	236.00	209.22	+ 1.22	+ 14.18
050 Cotton Yarn	5.2491	256.44	252.78	204.94	+ 1.45	+ 25.13
051 Nylon Yarn	0.1719	143.99	143.99	143.99	+ 0.00	+ 0.00
052 Blended Yarn	0.1689	195.65	199.05	186.96	- 1.71	+ 4.65
053 Woven Fabrics	0.0128	338.53	324.76	316.28	+ 4.24	+ 7.03
054 Cotton Fabrics	0.6343	221.14	220.63	211.50	+ 0.23	+ 4.56
055 Other Fabrics	1.1016	227.85	227.85	227.16	+ 0.00	+ 0.30
056 Silk & Reyon Fabrics	0.7350	188.81	188.81	188.14	+ 0.00	+ 0.36
057 Towels	0.1235	308.50	305.52	276.14	+ 0.98	+ 11.72

Annexure B: Wholesale Price Indices by Major Groups & Commodities

(2007-08=100)

Item and Specification	Weight	Index Numbers			% Change in Nov 2018 over	
		Nov 18	Oct 18	Nov 17	Oct 2018	Nov 2017
058 Blankets	0.0029	273.59	267.72	257.93	+ 2.19	+ 6.07
059 Bed Sheets	0.0913	268.60	257.39	256.87	+ 4.36	+ 4.57
060 Quilts	0.0019	224.63	222.32	222.32	+ 1.04	+ 1.04
061 Woolen Carpets	0.0383	196.43	196.43	196.43	+ 0.00	+ 0.00
062 Synthetic Carpets	0.0566	131.80	131.80	130.95	+ 0.00	+ 0.65
063 Hosiery Products	0.8832	254.53	254.07	244.11	+ 0.18	+ 4.27
064 Readymade Garments	1.0576	213.16	204.85	201.37	+ 4.06	+ 5.85
Leather Products	0.7115	248.38	244.52	195.77	+ 1.58	+ 26.87
065 Leather Without Hair	0.2973	228.93	225.53	212.68	+ 1.51	+ 7.64
066 Other Leather N.E.C	0.2567	320.16	313.42	207.02	+ 2.15	+ <u>54.65</u>
067 Footwears	0.1575	168.09	168.09	145.51	+ 0.00	+ 15.52
Other Transportable Goods	22.3659	224.71	217.85	176.98	+ 3.15	+ 26.97
068 Timber	0.0165	244.62	241.03	231.53	+ 1.49	+ 5.65
069 Printing Paper	0.4279	174.76	174.76	166.45	+ 0.00	+ 4.99
070 Hard Board	0.1579	291.67	291.67	225.00	+ 0.00	+ 29.63
071 Coke	0.2797	163.45	163.45	163.45	+ 0.00	+ 0.00
072 Motor Spirit	1.5336	165.26	156.81	128.35	+ 5.39	+ 28.76
073 Diesel Oil	5.2664	247.11	230.43	166.05	+ 7.24	+ 48.82
074 Kerosine Oil	0.2151	230.97	222.78	141.66	+ 3.68	+ <u>63.05</u>
075 Furnace Oil	3.2664	198.68	193.09	112.15	+ 2.90	+ <u>77.16</u>
076 Mobil Oil	0.7114	211.03	209.31	200.62	+ 0.82	+ 5.19
077 Chemicals	1.7720	215.33	215.90	179.89	- 0.26	+ 19.70
078 Dyeing Material	0.1539	150.72	150.72	146.55	+ 0.00	+ 2.85
079 Fertilizers	2.8657	257.79	252.46	220.00	+ 2.11	+ 17.18
080 Pesticides	0.2763	316.64	312.32	307.23	+ 1.38	+ 3.06
081 Insecticides	0.1276	147.06	144.97	137.12	+ 1.44	+ 7.25
082 Paints & Varnishes	0.1916	358.49	354.53	299.42	+ 1.12	+ 19.73
083 Medicines	1.1428	180.99	180.22	176.89	+ 0.43	+ 2.32
084 Soaps & Detergents	0.8168	198.71	195.41	191.45	+ 1.69	+ 3.79
085 Auto Tyres	0.2703	184.52	184.52	177.07	+ 0.00	+ 4.21
086 Plastic Products	0.4550	244.35	243.75	226.00	+ 0.25	+ 8.12
087 Glass sheets	0.2089	312.41	304.55	302.27	+ 2.58	+ 3.35
088 Other Glass Articles	0.1635	318.10	318.10	318.10	+ 0.00	+ 0.00
089 Ceramics & Sanitary Fixture	0.0244	246.05	243.24	232.65	+ 1.16	+ 5.76
090 Bricks, Blocks & Tiles	0.1566	233.23	231.36	223.21	+ 0.81	+ 4.49
091 Cement	1.8145	239.43	234.54	212.69	+ 2.08	+ 12.57
092 Bed Foam	0.0006	182.50	182.50	170.33	+ 0.00	+ 7.14
093 Matches	0.0505	171.36	171.36	171.36	+ 0.00	+ 0.00
Metal Product, Machinery & Eq	8.7156	190.55	190.04	177.63	+ 0.27	+ 7.27
094 Pig Iron	0.0593	128.97	128.97	128.97	+ 0.00	+ 0.00
095 Steel Bar & Sheets	1.4022	177.11	174.08	140.75	+ 1.74	+ 25.83
096 Pipe Fittings	0.0780	238.51	238.51	215.66	+ 0.00	+ 10.60
097 Steel Products	0.3879	184.01	183.86	176.70	+ 0.08	+ 4.14
098 Engines & Motors	0.0046	116.98	116.98	116.98	+ 0.00	+ 0.00
099 Vacuum Pumps	0.0155	123.69	123.69	123.69	+ 0.00	+ 0.00
100 Air Conditioners	0.0049	211.33	208.65	200.10	+ 1.28	+ 5.61
101 Cultivators	0.0551	190.66	190.66	190.66	+ 0.00	+ 0.00
102 Chuff Cutter	0.1293	153.46	153.46	153.46	+ 0.00	+ 0.00
103 Tractors	0.0028	226.93	216.82	201.75	+ 4.66	+ 12.48
104 Lathe Machines	0.0525	268.38	268.38	241.06	+ 0.00	+ 11.33
105 Concrete Mixture	0.0107	138.83	138.83	138.83	+ 0.00	+ 0.00
106 Fridge,WashM,SewM,Fans,Iron	1.1645	238.82	238.78	216.72	+ 0.02	+ 10.20
107 Electric Wires	0.0912	208.22	208.22	205.92	+ 0.00	+ 1.12
108 Lighting Equipments	1.4431	174.04	174.04	170.98	+ 0.00	+ 1.79
109 Radio & Television	0.1843	140.42	140.42	140.42	+ 0.00	+ 0.00
110 Motor Vehicles	0.0244	223.94	221.80	195.36	+ 0.96	+ 14.63
111 Motorcycles	0.2570	134.21	134.21	126.05	+ 0.00	+ 6.47
112 Bicycles	3.3483	194.31	194.31	187.65	+ 0.00	+ 3.55

CPI by Income Quintiles and Commodity Groups (2007-08=100) November, 2018 (% change with October, 2018)

Income Quintiles	General	Food and non-alcoholic Beverages	Alcoholic Beverages, Tobacco	Clothing and footwear	Housing, water, Elec., Gas and other fuels	Furnishing and household equipment maintenance	Health	Transport	Communication	Recreation and culture	Education	Restaurants and hotels	Misc. goods and services
------------------	---------	----------------------------------	------------------------------	-----------------------	--	--	--------	-----------	---------------	------------------------	-----------	------------------------	--------------------------

All Urban**Combined**

Aggregate	0.11	-0.61	1.15	1.16	0.08	0.92	0.45	1.81	0.08	0.29	0.00	0.27	0.28
Income Quintile 1	-0.18	-0.83	1.28	1.18	0.14	1.33	0.43	0.13	0.10	0.30	0.00	0.15	0.46
Income Quintile 2	-0.09	-0.72	1.26	1.16	0.08	1.29	0.44	0.55	0.09	0.30	0.00	0.17	0.48
Income Quintile 3	-0.04	-0.68	1.25	1.14	0.07	1.26	0.45	0.98	0.08	0.29	0.00	0.21	0.43
Income Quintile 4	0.05	-0.61	1.23	1.15	0.06	1.19	0.46	1.41	0.07	0.28	0.00	0.24	0.39
Income Quintile 5	0.24	-0.49	1.04	1.18	0.08	0.76	0.46	2.15	0.08	0.29	0.00	0.30	0.13

CPI by Income Quintiles and Commodity Groups (2007-08=100) November, 2018 (% change with November, 2017)

Income Quintiles	General	Food and non-alcoholic Beverages	Alcoholic Beverages, Tobacco	Clothing and footwear	Housing, water, Elec., Gas and other fuels	Furnishing and household equipment maintenance	Health	Transport	Communication	Recreation and culture	Education	Restaurants and hotels	Misc. goods and services
------------------	---------	----------------------------------	------------------------------	-----------------------	--	--	--------	-----------	---------------	------------------------	-----------	------------------------	--------------------------

All Urban**Combined**

Aggregate	6.50	1.02	13.91	7.49	9.11	7.48	9.45	19.77	7.83	8.72	10.01	4.71	7.90
Income Quintile 1	3.52	-0.20	12.66	7.64	5.85	8.16	8.81	21.87	3.77	6.80	10.22	3.35	6.48
Income Quintile 2	4.16	0.32	12.74	7.57	6.09	8.16	9.06	20.41	4.22	6.93	10.19	3.59	6.55
Income Quintile 3	4.59	0.57	13.24	7.53	5.99	8.13	9.18	19.61	5.00	7.24	10.07	4.06	6.89
Income Quintile 4	6.27	0.91	14.03	7.49	10.24	8.05	9.35	19.29	6.46	7.80	9.96	4.51	7.15
Income Quintile 5	8.36	1.74	14.52	7.45	11.58	7.17	9.74	19.81	9.23	10.06	10.00	5.13	8.84