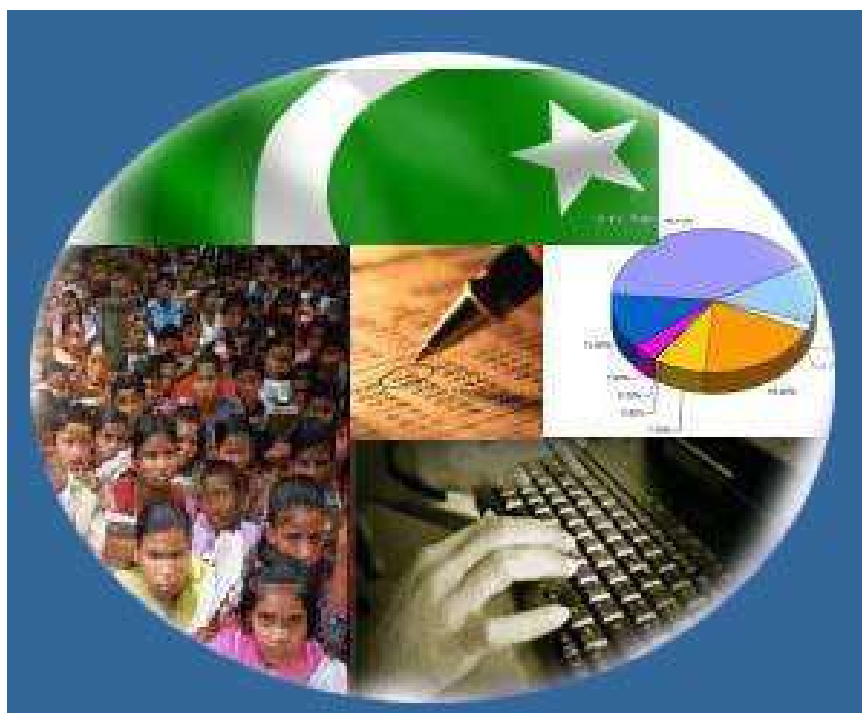




# Monthly Review on Price Indices



**February, 2017**  
**(Base 2007-08)**

**Government of Pakistan**  
**Statistics Division**  
**Pakistan Bureau of Statistics**  
**Islamabad**



## Inflation in Brief

1. CPI inflation General increased by 4.2% on year-on-year basis in February 2017 as compared to an increase of 3.7% in the previous month and 4% in February 2016. On month-on-month basis, it increased by 0.3% in February 2017 as compared to an increase of 0.2% in the previous month and a decrease of 0.3% in February 2016.
2. Core inflation measured by non-food non-energy CPI (Core NFNE) increased by 5.3% on (YoY) basis in February 2017 as compared to increase of 5.4% in the previous month and 4.5% in February 2016. On (MoM) basis, it increased by 0.2% in February 2017 as compared to increase of 1.1% in previous month, and an increase of 0.2% in corresponding month of last year i.e. February 2016.
3. Core inflation, measured by 20% weighted trimmed mean CPI (Core Trimmed) increased by 4.1% on (YoY) basis in February 2017 as compared to 3.8% in the previous month and by 3.6% in February 2016. On (MoM) basis, it increased by 0.2% in February 2017 as compared to an increase of 0.6% in the previous month and an increase of 0.1% in corresponding month of last year i.e. February 2016.
4. SPI inflation on YoY increased by 1.1% in February 2017 as compared to an increase of 0.4% a month earlier and an increase of 3.6% in February 2016. On MoM basis, it increased by 0.2% in February 2017 as compared to a decrease of 0.8% a month earlier and a decrease of 0.5% in February 2016.
5. WPI inflation on YoY basis increased by 5.3% in February 2017 as compared to an increase of 4.2% a month earlier and an increase of 0.6% in February 2016. WPI inflation on MoM basis increased by 0.5% in February 2017 as compared to an increase of 0.5% a month earlier and a decrease of 0.6% in corresponding month of last year i.e. February 2016.
6. Figures 1 and 2 show graphically the data of Table 1. Table 1.1 shows "Period Average" and "YoY" percent changes in indices of three years.

**Table 1: Inflation (%) (Base 2007-08)**

Period	CPI						Core Inflation				SPI**		WPI	
	General		Food		Non-food		NFNE*		Trimmed		YoY	MoM	YoY	MoM
	YoY	MoM	YoY	MoM	YoY	MoM	YoY	MoM	YoY	MoM				
Jan 16	3.3	0.2	2.5	-0.6	3.9	0.8	4.3	0.9	3.0	0.6	3.1	-0.7	0.1	-0.5
Feb 16	4.0	-0.3	3.7	-0.7	4.2	0.0	4.5	0.2	3.6	0.1	3.6	-0.5	0.6	-0.6
Mar 16	3.9	0.1	3.7	0.5	4.1	-0.1	4.7	0.2	3.8	0.2	3.5	-0.2	0.2	-0.4
April 16	4.2	1.5	4.7	2.4	3.8	1.0	4.4	1.1	3.8	0.6	2.9	-0.1	0.6	1.3
May 16	3.2	-0.2	2.1	-0.7	3.9	0.2	4.6	0.2	3.6	0.2	0.6	-1.0	0.0	0.6
June 16	3.2	0.6	2.3	1.4	3.8	0.1	4.6	0.1	3.7	0.2	0.7	1.1	0.2	1.4
July 16	4.1	1.3	4.7	2.5	3.7	0.5	4.5	0.6	3.6	0.5	1.7	1.3	3.0	2.3
Aug 16	3.6	-0.3	3.4	-0.9	3.7	0.2	4.6	0.2	3.5	0.1	2.2	0.2	3.5	0.0
Sep 16	3.9	0.2	4.0	0.1	3.8	0.2	4.8	0.3	3.7	0.1	1.8	0.1	3.4	-0.5
Oct 16	4.2	0.8	4.4	0.8	4.1	0.8	5.2	0.9	3.8	0.6	1.3	0.7	2.8	-0.0
Nov 16	3.8	0.2	3.3	0.2	4.2	0.2	5.3	0.2	3.8	0.2	0.6	0.3	2.6	-0.2
Dec 16	3.7	-0.7	3.0	-1.9	4.2	0.2	5.2	0.1	3.7	0.1	0.5	-0.8	3.1	-0.1
Jan 17	3.7	0.2	2.6	-1.0	4.4	1.0	5.4	1.1	3.8	0.6	0.4	-0.8	4.2	0.5
Feb 17	4.2	0.3	3.7	0.3	4.6	0.3	5.3	0.2	4.1	0.2	1.1	0.2	5.3	0.5

\*NFNE is non-food non-energy, \*\* SPI for quintile 1. Digits 0.0\* are due to rounding off.

**Table 1.1 : Period Average and YoY % Changes of Indices (Base 2007-08)**

Index	Averages July-February % Changes			February over February % Changes		
	2016-17	2015-16	2014-15	2017	2016	2015
CPI	3.90	2.48	5.45	4.22	4.02	3.24
SPI	1.20	1.02	2.77	1.15	3.60	0.22
WPI	3.46	-1.70	0.87	5.27	0.58	-3.36

Figure 2: CPI Inflation MoM, Special Indices

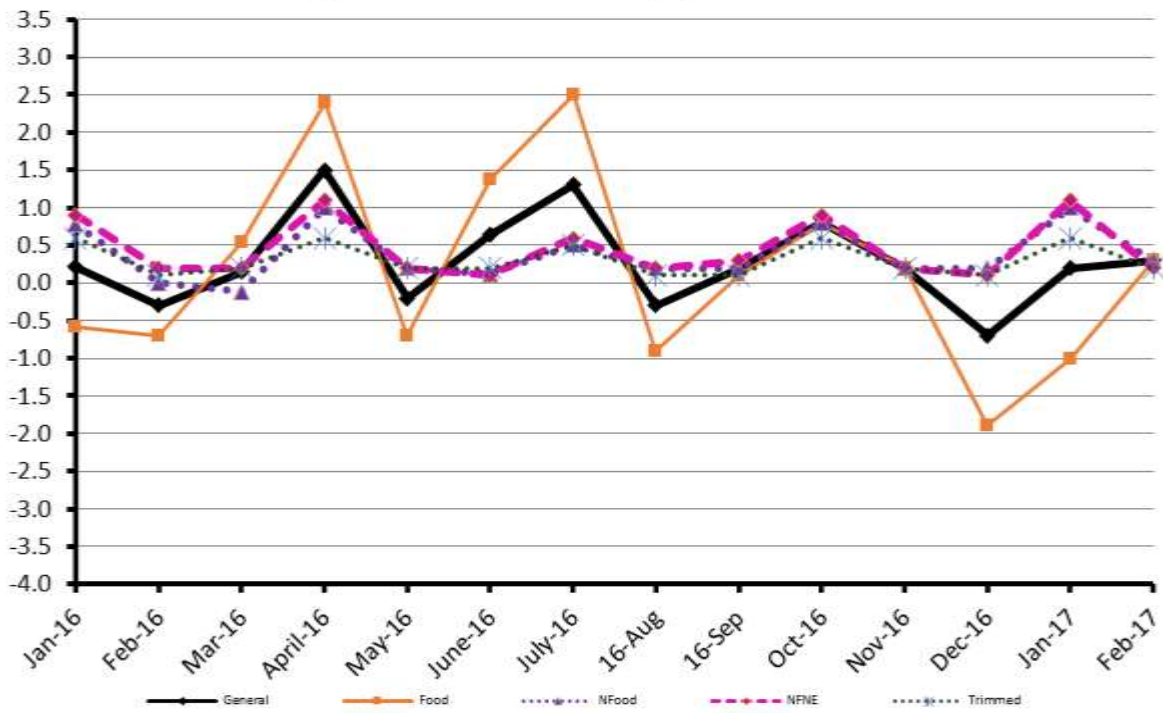
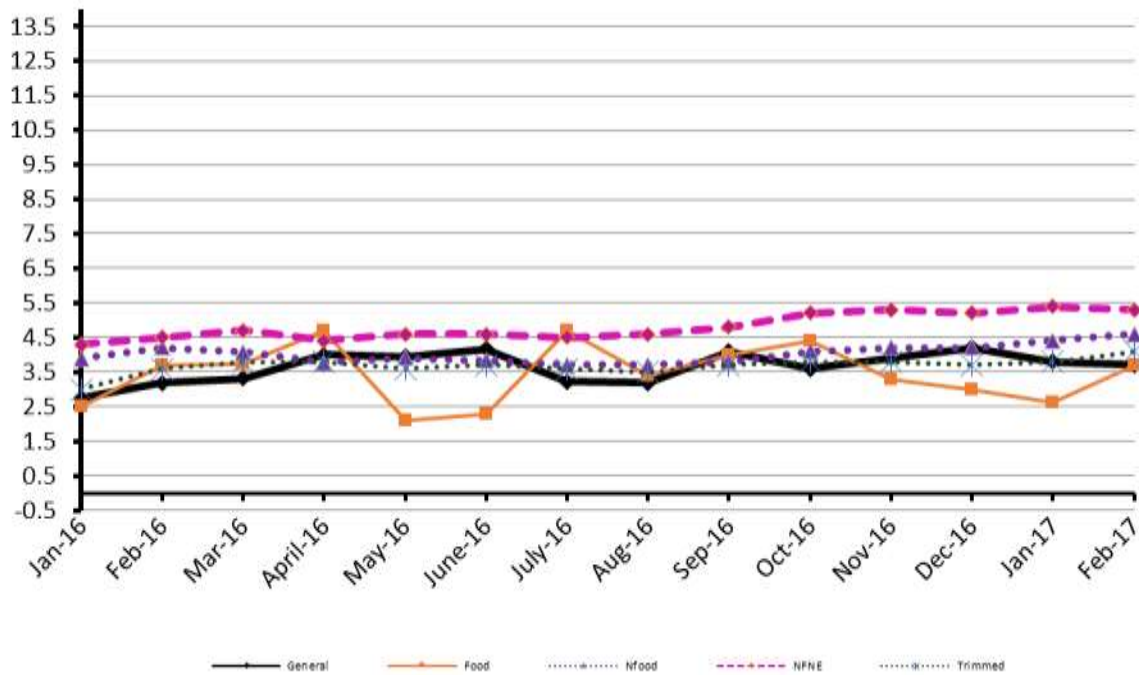


Figure 1: CPI Inflation YoY, Special Indices



## II. Consumer Price Index (CPI)

The Consumer Price Index of February 2017, has increased by 0.35% over January 2017 and increased by 4.28% over corresponding month of the last year i.e. February 2016.

**Table 2 : Consumer Price Index by Group of Commodities and Services (Base 2007-08)**

No	Group	Group Weight (%)	Indices			% Change February 2017 Over		Impact (In % points) February 2017 Over	
			Feb 2017	Jan 2017	Feb 2016	Jan 2017	Feb 2016	Jan 2017	Feb 2016
	General	<b>100.00</b>	<b>211.54</b>	<b>210.94</b>	<b>202.98</b>	<b>0.28</b>	<b>4.22</b>	<b>0.28</b>	<b>4.22</b>
1.	Food & Non-alcoholic Bev.	34.83	221.66	220.96	214.99	0.32	3.10	0.12	1.15
	<i>Non-perishable Food Items</i>	29.84	224.69	224.82	219.38	-0.06	2.42	-0.02	0.78
	<i>Perishable Food Items</i>	4.99	203.59	197.89	188.76	2.88	7.86	0.13	0.36
2.	Alcoholic Bev. & Tobacco	1.41	379.55	377.97	337.57	0.42	12.44	0.01	0.29
3.	Clothing & Footwear	7.57	234.34	234.02	224.97	0.14	4.16	0.01	0.35
4.	Housing, Water, Electricity, Gas & Fuels	29.41	194.45	194.42	185.49	0.02	4.83	0.00	1.30
5.	Furnishing & Household Equipment Maintenance	4.21	224.32	223.92	218.83	0.18	2.51	0.01	0.11
6.	Health	2.19	210.17	208.45	184.18	0.83	14.11	0.02	0.28
7.	Transport	7.20	174.75	172.81	174.05	1.12	0.40	0.07	0.02
8.	Communication	3.22	131.58	131.54	130.57	0.03	0.77	0.00	0.02
9.	Recreation & Culture	2.02	196.88	196.73	194.38	0.08	1.29	0.00	0.02
10.	Education	3.94	233.96	233.41	210.15	0.24	11.33	0.01	0.46
11.	Restaurants & Hotels	1.23	269.63	268.90	259.39	0.27	3.95	0.00	0.06
12.	Miscellaneous	2.76	241.06	238.58	230.15	1.04	4.74	0.03	0.15

Main contributors to month-on-month and year-on-year percentage changes are given below and detail is given in Annexure A.

- Month-on-month** Top few commodities which varied from previous month are given below:-

**Food Items Increased:** Tomatoes (28.98%), Chicken (7.91%), Onion (6.31%), Rice (3.53%), Fresh Fruits (2.62%), and Tea (1.4%).

**Decreased:** Pulse Gram (12.44%), Besan (9.31%), Eggs (8.74%), Pulse Mash (6.17%), gram whole (5.92%), Pulse Masoor (4.25%), Sugar (2.47%), Pulse Moong (2.42%), and Potatoes (2.26%).

**Non-food Items Increased:** Motor Fuel (3.12%), Medical Tests (1.64%), Doctor (MBBS) Clinic Fee (1.6%), Personal Equipments (1.34%), and Personal Care (1%).

**Decreased:** Woolen Readymade Garments (0.16%).

- Year-on-Year:** Top few commodities which varied from previous year i.e. February 2016 are given below:-

**Food Items Increased:** Gram Whole (32.36%), Potatoes (31.9%), Besan (20.08%), Pulse Gram (19.17%), Fresh Vegetables (16.21%), Eggs (13.28%), Cigarettes (12.51%), Chicken (11.4%), Fresh Fruits (10.19%), and Tomatoes (10.17%).

**Decreased:** Onion (29.93%), Pulse Mash (16.96%), Pulse Moong (14.56%), Pulse Masoor (4.83%), and Tea (4.43%).

**Non-food Items Increased:** Drugs & Medicines (21.32%), Education (11.33%), Medical Equipments (10.22%), Doctor (MBBS) Clinic Fee (8.77%), Tailoring (7.1%), House Rent (6.62%), Personal Equipments (5.88%), and Woolen Cloth (5.87%).

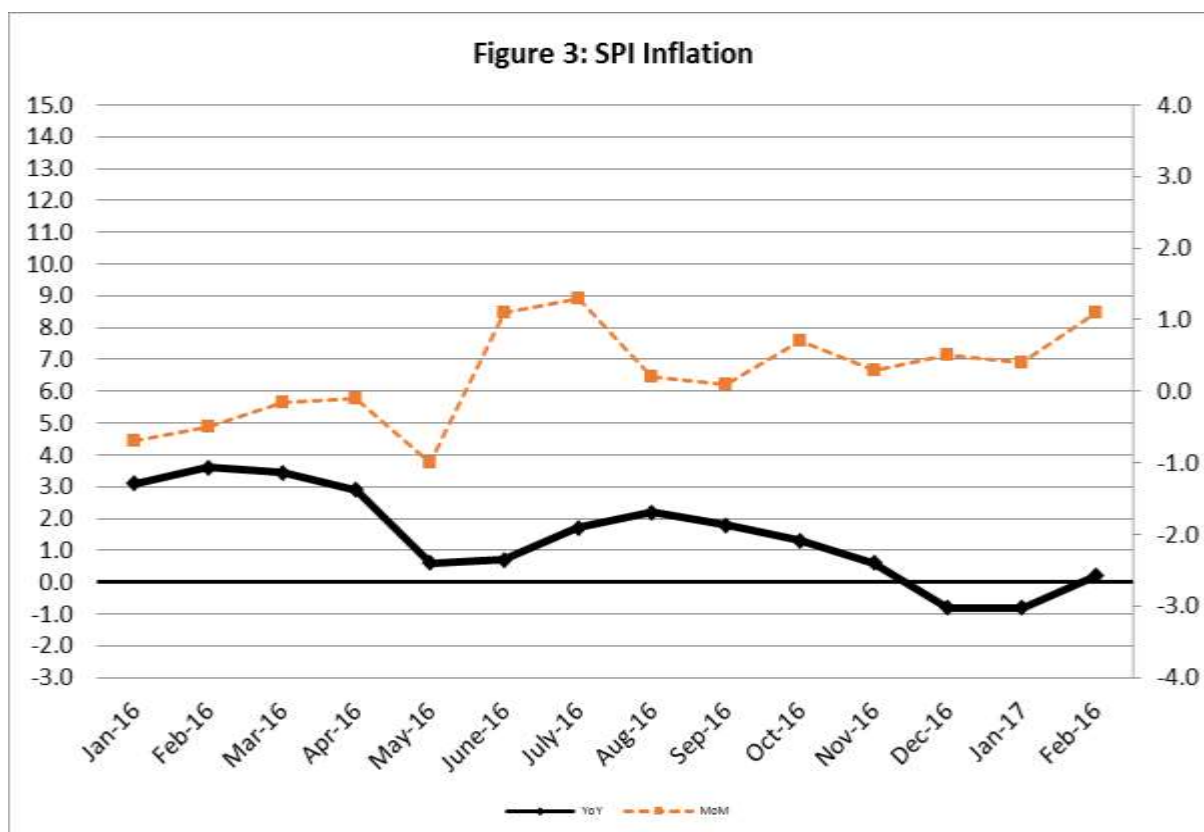
**Decreased:** Motor Vehicle Accessories (3.39%), and Transport Services (1.22%).

### III. Sensitive Price Indicator

Quintile-wise percentage changes YoY and MoM are given below in Table 3. The series from January 2016 to February 2017 is also graphed below in Figure 3.

Table 3: Sensitive Price Indicator (Base 2007-08)					
Quintiles	Indices			% Change Feb 2017 over	
	Feb 2017	Jan 2017	Feb 2016	Jan 2017	Feb 2016
1	209.50	209.06	207.12	0.21	1.15
2	217.04	216.45	214.24	0.27	1.31
3	218.21	217.53	215.07	0.31	1.46
4	223.13	222.27	219.50	0.39	1.65
5	220.57	219.39	216.42	0.54	1.92
Combined	219.25	218.35	215.73	0.41	1.63

Table 3.1 : Weekly Percentage Change of SPI During February-17				
Quintiles	% Change with Previous week			
	2 <sup>nd</sup> Feb-2017	9 <sup>th</sup> Feb-2017	16 <sup>th</sup> Feb-2017	23 <sup>rd</sup> Feb-2017
Quantile 1	-0.16	-0.01	0.54	-0.10
Combined	-0.07	0.00	0.59	-0.14



## IV. Wholesale Price Index

The Wholesale Price Index for February, 2017 increased by 0.47% over January, 2017. It increased by 5.27% over the corresponding month of the last year. YoY and MoM movements, from January, 2016 to February, 2017 are also graphed below in Figure 4.

**Table 4 : Wholesale Price Index by Group of Commodities (Base 2007-08)**

No.	Group	Group Weight (%)	Indices			% Change February, 2017 over		Impact (in %age points) February, 2017 over	
			Feb 2017	Jan 2017	Feb 2016	Jan 2017	Feb 2016	Jan 2017	Feb 2016
	<b>General</b>	<b>100.00</b>	<b>215.86</b>	<b>214.84</b>	<b>205.05</b>	<b>0.47</b>	<b>5.27</b>	<b>0.47</b>	<b>5.28</b>
1.	Agriculture, Forestry & Fishery Products	25.77	243.57	240.28	221.23	1.37	10.10	0.39	2.81
2.	Ores & Minerals, Electricity, Gas & Water	12.04	242.78	242.43	245.89	0.14	-1.26	0.02	-0.18
3.	Food Products, Beverages & Tobacco, Textiles, Apparel & Leather Products	31.11	226.40	226.31	215.03	0.04	5.29	0.01	1.73
	i. Food Products, Bev. & Tobacco	20.07	237.24	238.67	228.87	-0.60	3.66	-0.13	0.82
	ii. Textiles and Apparel	10.33	207.18	204.12	189.32	1.50	9.43	0.15	0.90
	iii. Leather Products	0.71	199.75	199.75	197.95	0.00	0.91	0.00	0.01
4.	Other Transportable Goods except Metal Products, Machinery & Equipment	22.37	170.89	170.47	164.03	0.25	4.18	0.04	0.76
5.	Metal Products, Machinery & Equipment	8.72	174.49	174.43	170.44	0.03	2.38	0.00	0.17

Main contributors to month-on-month and year-on-year percentage changes are given below and detail is given in Annexure B.

1. **Month-on-month** Top few commodities which varied from previous month i.e. January, 2017 are given below:-

**Increased:** Poultry (7.76%), Fiber Crops (4.73%), Motor Spirit (4.69%), Fish (4.57%), Fresh Fruits (4.13%), Vegetables (3.89%), Cotton Yarn (3.10%), Rice (2.71%), Diesel Oil (2.35%), Towels (1.83%) and Coffee & Tea (1.46%).

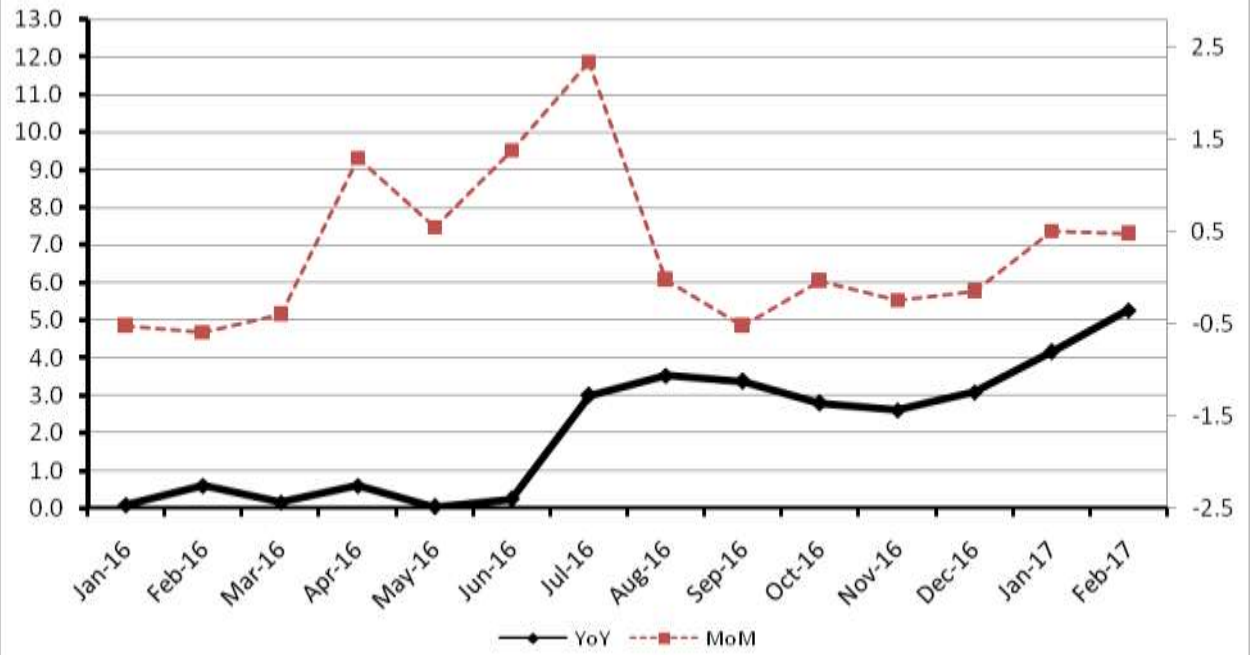
**Decreased:** Other Cereal Flour (15.33%), Eggs (10.96%), Pulses (7.86%), Hides & Fur Skins (7.13%), Other Oil Seeds (4.24%), Potatoes (4.04%), Chemicals (3.84%), Sugar (3.79%), Furnace Oil (2.82%) and Oil Cakes (2.07%).

2. **Year-on-year** Top few commodities which varied from previous year i.e. February, 2016 are given below:-

**Increased:** Furnace Oil (119.11%), Potatoes (38.96%), Fish (38.42%), Glass Sheets (28.49%), Other Glass Articles (26.40%), Fiber Crops (23.48%), Unmanufactured Tobacco (20.81%), Other Cereal Flour (19.31%), Woolen Carpets (17.86%), Cotton Yarn (15.89%), Lathe Machines (15.44%), Other Oil Seeds (15.20%) and Tobacco Products (15.12%).

**Decreased:** Hides & Fur Skins (29.77%), Fertilizers (19.05%), Cultivators (13.24%), Coal (11.01%), Jowar (10.62%) and Stimulant & Spice Crops (7.55%).

Figure 4: WPI Inflation





**Annexure A:CPI by Commodity Groups and Commodities (2007-08=100)**

Item and Specification	Weight	Index Numbers			% Change in Feb 2017 over			
		Feb 2017	Jan 2017	Feb 2016	Jan 2017	Feb 2016		
	<b>100.000</b>							
<b><u>General</u></b>	<b>0</b>	<b>211.54</b>	<b>210.94</b>	<b>202.98</b>	<b>+</b>	<b>0.28</b>	<b>+</b>	<b>4.22</b>
<b><u>Food and non-alcoholic Beverages</u></b>	<b>34.8343</b>	<b>221.66</b>	<b>220.96</b>	<b>214.99</b>	<b>+</b>	<b>0.32</b>	<b>+</b>	<b>3.10</b>
1 Wheat	0.3477	207.84	206.77	209.18	+	0.52	-	0.64
2 Wheat Flour	4.1648	213.15	213.27	217.05	-	0.06	-	1.80
3 Wheat Product	0.0959	216.39	217.11	213.03	-	0.33	+	1.58
4 Besan	0.1500	310.18	342.04	258.32	-	9.31	+	20.08
5 Rice	1.5821	168.06	162.33	156.66	+	3.53	+	7.28
6 Cereals	0.1563	253.65	253.51	245.93	+	0.06	+	3.14
7 Bakery & Confectionary	1.1550	216.92	216.35	211.97	+	0.26	+	2.34
8 Nimco	0.4574	250.62	250.60	246.64	+	0.01	+	1.61
9 Meat	2.4303	268.26	267.47	259.99	+	0.30	+	3.18
10 Chicken	1.3596	165.68	153.54	148.72	+	7.91	+	11.40
11 Fish	0.2970	219.56	218.20	217.07	+	0.62	+	1.15
12 Milk Fresh	6.6800	268.32	267.90	259.27	+	0.16	+	3.49
13 Milk Products	0.6338	258.54	257.80	250.66	+	0.29	+	3.14
14 Milk Powder	0.1129	236.18	236.11	234.30	+	0.03	+	0.80
15 Eggs	0.4555	229.60	251.58	202.68	-	8.74	+	13.28
16 Mustard Oil	0.0952	158.04	156.91	155.57	+	0.72	+	1.59
17 Cooking Oil	1.7538	135.95	135.30	132.13	+	0.48	+	2.89
18 Vegetable Ghee	2.0714	141.52	140.90	135.96	+	0.44	+	4.09
19 Dry Fruits	0.2543	264.98	265.17	262.54	-	0.07	+	0.93
20 Fresh Fruits	1.8649	225.40	219.65	204.55	+	2.62	+	10.19
21 Pulse Masoor	0.2712	192.76	201.31	202.55	-	4.25	-	4.83
22 Pulse Moong	0.2336	256.42	262.78	300.13	-	2.42	-	14.56
23 Pulse Mash (Washed)	0.2098	289.59	308.62	348.73	-	6.17	-	16.96
24 Pulse Gram	0.2361	319.93	365.37	268.47	-	12.44	+	19.17
25 Gram Whole	0.1616	295.48	314.06	223.24	-	5.92	+	32.36
26 Beans	0.0269	232.05	231.08	233.25	+	0.42	-	0.51
27 Potatoes	0.4776	162.81	166.57	123.43	-	2.26	+	31.90
28 Onion	0.5417	173.49	163.19	247.60	+	6.31	-	29.93
29 Tomatoes	0.4496	126.67	98.21	114.98	+	28.98	+	10.17
30 Fresh Vegetables	1.6571	221.50	220.80	190.61	+	0.32	+	16.21
31 Sugar	1.0445	226.80	232.55	223.59	-	2.47	+	1.44
32 Gur	0.0220	267.08	266.60	266.92	+	0.18	+	0.06
33 Honey	0.0446	322.20	319.03	307.75	+	0.99	+	4.70
34 SweetMeat	0.2483	246.37	245.95	241.33	+	0.17	+	2.09
35 Beverages	1.1990	218.90	218.57	215.64	+	0.15	+	1.51
36 Jam, Tomato Ketchup & Pickles	0.2454	216.89	216.69	212.12	+	0.09	+	2.25
37 Condiments	0.2656	266.55	265.97	262.38	+	0.22	+	1.59
38 Spices	0.5441	238.85	238.31	239.15	+	0.23	-	0.13
39 Tea	0.8377	270.18	266.44	282.69	+	1.40	-	4.43
<b><u>Alcoholic Beverages, Tobacco</u></b>	<b>1.4135</b>	<b>379.55</b>	<b>377.97</b>	<b>337.57</b>	<b>+</b>	<b>0.42</b>	<b>+</b>	<b>12.44</b>
40 Cigarettes	1.3906	381.80	380.19	339.36	+	0.42	+	12.51
41 Betel Leaves & Nuts	0.0229	243.31	242.96	229.29	+	0.14	+	6.11
<b><u>Clothing and footwear</u></b>	<b>7.5708</b>	<b>234.34</b>	<b>234.02</b>	<b>224.97</b>	<b>+</b>	<b>0.14</b>	<b>+</b>	<b>4.16</b>
42 Cotton Cloth	1.7286	226.39	225.84	216.48	+	0.24	+	4.58
43 Woolen Cloth	0.8759	254.92	254.50	240.78	+	0.17	+	5.87
44 Readymade Garments	0.9739	239.59	239.29	229.79	+	0.13	+	4.26
45 Woolen Readymade Garments	0.3964	264.98	265.41	254.84	-	0.16	+	3.98
46 Hosiery	0.5094	245.96	245.83	238.88	+	0.05	+	2.96

47	Dopatta	0.4412	243.52	242.99	239.78	+	0.22	+	1.56
48	Cleaning and Laundry	0.2110	261.12	259.00	251.12	+	0.82	+	3.98
49	Tailoring	0.8840	310.54	310.40	289.94	+	0.05	+	7.10
50	Footwear	1.5504	166.91	166.84	165.44	+	0.04	+	0.89
	<b><u>Housing, water, Elec., Gas and other fuels</u></b>	<b>29.4149</b>	<b>194.45</b>	<b>194.42</b>	<b>185.49</b>	+	<b>0.02</b>	+	<b>4.83</b>
51	House Rent	21.8149	185.86	185.86	174.32	+	0.00	+	6.62
52	Construction Input Items	0.5623	249.82	249.60	242.77	+	0.09	+	2.90
53	Construction Wage Rates	0.3331	235.67	234.42	225.13	+	0.53	+	4.68
54	Water Supply	0.4971	164.74	164.74	161.10	+	0.00	+	2.26
55	Electricity	4.3985	238.10	238.10	238.10	+	0.00	+	0.00
56	Gas	1.5756	158.08	158.08	158.08	+	0.00	+	0.00
57	Kerosene Oil	0.0057	198.47	198.47	189.04	+	0.00	+	4.99
58	Firewood Whole	0.2277	293.08	292.43	283.33	+	0.22	+	3.44
	<b><u>Furnishing and household equipment maintenance</u></b>	<b>4.2082</b>	<b>224.32</b>	<b>223.92</b>	<b>218.83</b>	+	<b>0.18</b>	+	<b>2.51</b>
59	Furniture	0.3315	216.40	215.79	208.62	+	0.28	+	3.73
60	Household Textiles	0.6489	226.59	226.38	217.54	+	0.09	+	4.16
61	Household Equipment	0.5936	179.63	179.16	176.18	+	0.26	+	1.96
62	Utensils	0.3212	227.90	226.40	219.75	+	0.66	+	3.71
63	Plastic Products	0.2547	209.42	209.10	206.33	+	0.15	+	1.50
64	Washing Soaps & Detergents	0.7893	230.50	230.09	226.94	+	0.18	+	1.57
65	Sewing Needle & Dr Cell	0.1496	204.96	204.24	203.40	+	0.35	+	0.77
66	Household Servant	1.0432	249.98	249.98	244.50	+	0.00	+	2.24
67	Marriage Hall Charges	0.0762	244.86	243.95	238.96	+	0.37	+	2.47
	<b><u>Health</u></b>	<b>2.1868</b>	<b>210.17</b>	<b>208.45</b>	<b>184.18</b>	+	<b>0.83</b>	+	<b>14.11</b>
68	Drugs & Medicines	1.2667	183.60	183.44	151.34	+	0.09	+	21.32
69	Medical Equipments	0.0080	250.20	248.70	227.00	+	0.60	+	10.22
70	Doctor (MBBS) Clinic Fee	0.5904	275.73	271.39	253.49	+	1.60	+	8.77
71	Medical Tests	0.3217	193.51	190.38	185.26	+	1.64	+	4.45
	<b><u>Transport</u></b>	<b>7.2023</b>	<b>174.75</b>	<b>172.81</b>	<b>174.05</b>	+	<b>1.12</b>	+	<b>0.40</b>
72	Motor Vehicles	0.6630	172.13	171.79	165.19	+	0.20	+	4.20
73	Motor Vehicle Accessories	0.2439	213.44	213.33	220.92	+	0.05	-	3.39
74	Motor Fuel	3.0269	146.07	141.65	144.21	+	3.12	+	1.29
75	Mechanical Service	0.4552	229.62	228.81	222.80	+	0.35	+	3.06
76	Motor Vehicle Tax	0.1099	210.18	210.18	210.18	+	0.00	+	0.00
77	Transport Services	2.7034	193.34	193.34	195.73	+	0.00	-	1.22
	<b><u>Communication</u></b>	<b>3.2198</b>	<b>131.58</b>	<b>131.54</b>	<b>130.57</b>	+	<b>0.03</b>	+	<b>0.77</b>
78	Postal Services	0.0662	246.00	245.18	235.86	+	0.33	+	4.30
79	Communication & Apparatus	3.1536	129.17	129.15	128.36	+	0.02	+	0.63
	<b><u>Recreation and culture</u></b>	<b>2.0227</b>	<b>196.88</b>	<b>196.73</b>	<b>194.38</b>	+	<b>0.08</b>	+	<b>1.29</b>
80	Recreation & Culture	0.8634	129.61	129.45	128.58	+	0.12	+	0.80
81	Text Books	0.5706	292.41	292.41	290.62	+	0.00	+	0.62
82	Newspapers	0.1934	179.59	179.20	175.49	+	0.22	+	2.34
83	Stationery	0.3953	214.35	214.16	208.44	+	0.09	+	2.84
	<b><u>Education</u></b>	<b>3.9431</b>	<b>233.96</b>	<b>233.41</b>	<b>210.15</b>	+	<b>0.24</b>	+	<b>11.33</b>
84	Education	3.9431	233.96	233.41	210.15	+	0.24	+	11.33
	<b><u>Restaurants and hotels</u></b>	<b>1.2286</b>	<b>269.63</b>	<b>268.90</b>	<b>259.39</b>	+	<b>0.27</b>	+	<b>3.95</b>
85	Readymade Food	1.2286	269.63	268.90	259.39	+	0.27	+	3.95
	<b><u>Misc. goods and services</u></b>	<b>2.7550</b>	<b>241.06</b>	<b>238.58</b>	<b>230.15</b>	+	<b>1.04</b>	+	<b>4.74</b>
86	Personal Care	1.4935	221.97	219.78	212.55	+	1.00	+	4.43
87	Cosmetics	0.3853	203.29	202.56	197.67	+	0.36	+	2.84
88	Blades	0.0322	196.91	196.34	195.05	+	0.29	+	0.95
89	Personal Equipments	0.8440	293.78	289.89	277.46	+	1.34	+	5.88

## Annexure B: Wholesale Price Indices by Major Groups &amp; Commodities

(2007-08=100)

Item and Specification	Weight	Index Numbers			% Change in Feb 2017 over			
		Feb 17	Jan 17	Feb 16	Jan 2017	Feb 2016		
<b>General</b>	<b>100.0000</b>	<b>215.86</b>	<b>214.84</b>	<b>205.05</b>	<b>+</b>	<b>0.47</b>	<b>+</b>	<b>5.27</b>
<b>Agriculture Forestry &amp; Fisher</b>	<b>25.7674</b>	<b>243.57</b>	<b>240.28</b>	<b>221.23</b>	<b>+</b>	<b>1.37</b>	<b>+</b>	<b>10.10</b>
001 Wheat	0.6297	215.69	214.17	220.02	+	0.71	-	1.97
002 Maize	0.6764	187.42	186.37	189.65	+	0.56	-	1.18
003 Rice	2.4413	157.46	153.30	141.69	+	2.71	+	11.13
004 Sorghum / Jowar	0.0214	235.79	236.93	263.80	-	0.48	-	10.62
005 Millet / Bajra	0.0374	168.08	167.74	176.35	+	0.20	-	4.69
006 Vegetables	1.2441	211.37	203.45	204.49	+	3.89	+	3.36
007 Fresh Fruits	1.5144	230.94	221.77	231.68	+	4.13	-	0.32
008 Dry Fruits	0.2478	241.74	242.90	250.92	-	0.48	-	3.66
009 Cotton Seeds	1.1511	267.94	266.81	257.94	+	0.42	+	3.88
010 Other Oil Seeds	0.0722	181.39	189.43	157.46	-	4.24	+	15.20
011 Edible Roots / Potatoes	0.2540	164.46	171.38	118.35	-	4.04	+	38.96
012 Stimulant & Spice Crops	0.1634	224.40	221.64	242.72	+	1.25	-	7.55
013 Pulses	0.4901	271.33	294.48	247.95	-	7.86	+	9.43
014 Sugar Crops	1.0725	268.94	268.94	286.29	+	0.00	-	6.06
015 Fibre Crops	5.3169	216.97	207.18	175.71	+	4.73	+	23.48
016 Unmanufactured Tobacco	0.0742	277.88	274.91	230.02	+	1.08	+	20.81
017 Poultry	0.5633	169.47	157.27	151.73	+	7.76	+	11.69
018 Raw Milk from Bovine Animals	7.0279	266.07	268.18	255.42	-	0.79	+	4.17
019 Eggs	0.5034	229.04	257.22	204.96	-	10.96	+	11.75
020 Raw Animal Materials / Wool	0.0351	178.30	177.44	177.45	+	0.48	+	0.48
021 Hides & Fur Skins, Raw	0.4834	105.67	113.78	150.46	-	7.13	-	29.77
022 Fuel Wood in Logs	0.0179	277.01	277.01	266.30	+	0.00	+	4.02
023 Fish Live Fresh or Chilled	1.7295	466.43	446.03	336.96	+	4.57	+	38.42
<b>Ores/Minerals, Elec., Gas &amp; W</b>	<b>12.0389</b>	<b>242.78</b>	<b>242.43</b>	<b>245.89</b>	<b>+</b>	<b>0.14</b>	<b>-</b>	<b>1.26</b>
024 Coal not Agglomerated	0.7508	155.29	155.29	174.51	+	0.00	-	11.01
025 Natural Gas Liquified	5.7385	210.99	210.29	210.01	+	0.33	+	0.47
026 Salt & Pure Sodium Chloride	0.0584	238.53	235.45	252.31	+	1.31	-	5.46
027 Electrical Energy	5.4912	288.00	288.00	293.09	+	0.00	-	1.74
<b>Food, Beverages, Tobacco, Textil</b>	<b>31.1122</b>	<b>226.40</b>	<b>226.31</b>	<b>215.03</b>	<b>+</b>	<b>0.04</b>	<b>+</b>	<b>5.29</b>
<b>Food Products, Beverages &amp;</b>	<b>20.0718</b>	<b>237.24</b>	<b>238.67</b>	<b>228.87</b>	<b>-</b>	<b>0.60</b>	<b>+</b>	<b>3.66</b>
028 Meat of Animals	3.4559	279.49	282.02	268.53	-	0.90	+	4.08
029 Vegetables & Fruit Juice	0.0058	223.21	222.28	201.36	+	0.42	+	10.85
030 Dried Fruits & Nuts	0.1733	264.08	264.94	250.38	-	0.32	+	5.47
031 Fruit Juices	0.3880	179.72	179.58	175.90	+	0.08	+	2.17
032 Vegetable Oils Refined	1.9242	154.12	152.91	148.73	+	0.79	+	3.62
033 Vegetable Ghee	1.5632	126.40	126.00	118.76	+	0.32	+	6.43
034 Oil Cakes	0.9611	225.71	230.47	217.76	-	2.07	+	3.65
035 Processed Liquid Milk	4.4437	257.27	257.57	247.57	-	0.12	+	3.92
036 Milk & Cream in Solid Form	0.0316	219.31	219.07	219.09	+	0.11	+	0.10
037 Ice Cream	0.0047	238.04	238.04	223.70	+	0.00	+	6.41
038 Dairy Products N.E.C	0.0117	254.42	254.27	248.13	+	0.06	+	2.53
039 Wheat Flour	2.3034	197.50	197.36	201.07	+	0.07	-	1.78
040 Other Cereal Flour	0.0604	269.57	318.36	225.94	-	15.33	+	19.31
041 Sugar Refined	1.7975	235.50	244.78	239.31	-	3.79	-	1.59
042 Chocolate	0.0139	100.00	100.00	101.06	+	0.00	-	1.05
043 Sugar Confectionary	0.0738	128.44	128.44	118.83	+	0.00	+	8.09
044 Coffee & Tea	0.7303	244.86	241.34	261.24	+	1.46	-	6.27
045 Spices	0.1449	190.46	190.41	189.65	+	0.03	+	0.43
046 Other Food Products	0.0336	293.85	293.85	292.52	+	0.00	+	0.45
047 Mineral Water	0.0207	198.57	198.57	189.02	+	0.00	+	5.05
048 Beverages	0.6303	172.33	172.33	171.95	+	0.00	+	0.22
049 Tobacco Products	1.2998	445.85	445.85	387.30	+	0.00	+	15.12
<b>Textiles &amp; Apparels</b>	<b>10.3289</b>	<b>207.18</b>	<b>204.12</b>	<b>189.32</b>	<b>+</b>	<b>1.50</b>	<b>+</b>	<b>9.43</b>
050 Cotton Yarn	5.2491	203.06	196.95	175.22	+	3.10	+	15.89
051 Nylon Yarn	0.1719	143.99	143.99	147.08	+	0.00	-	2.10
052 Blended Yarn	0.1689	181.06	180.91	175.44	+	0.08	+	3.20
053 Woven Fabrics	0.0128	310.72	310.72	275.66	+	0.00	+	12.72
054 Cotton Fabrics	0.6343	209.30	209.34	201.65	-	0.02	+	3.79
055 Other Fabrics	1.1016	224.40	224.40	217.82	+	0.00	+	3.02
056 Silk & Reyon Fabrics	0.7350	186.55	188.10	186.80	-	0.82	-	0.13
057 Towels	0.1235	276.14	271.17	267.20	+	1.83	+	3.35
058 Blankets	0.0029	247.38	247.52	243.93	-	0.06	+	1.41

## Annexure B: Wholesale Price Indices by Major Groups &amp; Commodities

(2007-08=100)

Item and Specification	Weight	Index Numbers			% Change in Feb 2017 over	
		Feb 17	Jan 17	Feb 16	Jan 2017	Feb 2016
059 Bed Sheets	0.0913	256.07	256.07	256.29	+ 0.00	- 0.09
060 Quilts	0.0019	203.79	203.79	201.47	+ 0.00	+ 1.15
061 Woolen Carpets	0.0383	196.43	196.43	166.67	+ 0.00	+ 17.86
062 Synthetic Carpets	0.0566	129.25	129.25	129.25	+ 0.00	+ 0.00
063 Hosiery Products	0.8832	241.83	241.83	222.52	+ 0.00	+ 8.68
064 Readymade Garments	1.0576	199.15	199.15	193.27	+ 0.00	+ 3.04
<b>Leather Products</b>	<b>0.7115</b>	<b>199.75</b>	<b>199.75</b>	<b>197.95</b>	<b>+ 0.00</b>	<b>+ 0.91</b>
065 Leather Without Hair	0.2973	221.97	221.97	221.97	+ 0.00	+ 0.00
066 Other Leather N.E.C	0.2567	207.31	207.31	207.31	+ 0.00	+ 0.00
067 Footwears	0.1575	145.51	145.51	137.38	+ 0.00	+ 5.92
<b>Other Transportable Goods</b>	<b>22.3659</b>	<b>170.89</b>	<b>170.47</b>	<b>164.03</b>	<b>+ 0.25</b>	<b>+ 4.18</b>
068 Timber	0.0165	225.41	225.41	216.79	+ 0.00	+ 3.98
069 Printing Paper	0.4279	165.63	165.63	161.82	+ 0.00	+ 2.35
070 Hard Board	0.1579	220.83	220.83	197.92	+ 0.00	+ 11.58
071 Coke	0.2797	163.45	163.45	163.45	+ 0.00	+ 0.00
072 Motor Spirit	1.5336	120.40	115.01	120.33	+ 4.69	+ 0.06
073 Diesel Oil	5.2664	153.09	149.57	142.84	+ 2.35	+ 7.18
074 Kerosine Oil	0.2151	115.11	115.49	115.11	- 0.33	+ 0.00
075 Furnace Oil	3.2664	105.61	108.68	48.20	- 2.82	+ 119.11
076 Mobil Oil	0.7114	196.91	196.91	196.00	+ 0.00	+ 0.46
077 Chemicals	1.7720	170.99	177.81	183.07	- 3.84	- 6.60
078 Dyeing Material	0.1539	146.55	146.55	146.55	+ 0.00	+ 0.00
079 Fertilizers	2.8657	215.96	215.39	266.79	+ 0.26	- 19.05
080 Pesticides	0.2763	304.43	304.43	312.37	+ 0.00	- 2.54
081 Insecticides	0.1276	143.12	141.62	129.81	+ 1.06	+ 10.25
082 Paints & Varnishes	0.1916	296.43	296.43	295.36	+ 0.00	+ 0.36
083 Medicines	1.1428	173.83	173.72	153.18	+ 0.06	+ 13.48
084 Soaps & Detergents	0.8168	191.29	190.99	183.70	+ 0.16	+ 4.13
085 Auto Tyres	0.2703	177.07	176.87	186.64	+ 0.11	- 5.13
086 Plastic Products	0.4550	225.73	225.73	226.58	+ 0.00	- 0.38
087 Glass sheets	0.2089	297.20	297.20	231.30	+ 0.00	+ 28.49
088 Other Glass Articles	0.1635	307.95	306.37	243.63	+ 0.52	+ 26.40
089 Ceramics & Sanitary Fixture	0.0244	234.18	234.18	227.51	+ 0.00	+ 2.93
090 Bricks, Blocks & Tiles	0.1566	219.99	219.28	216.02	+ 0.32	+ 1.84
091 Cement	1.8145	218.23	217.11	206.70	+ 0.52	+ 5.58
092 Bed Foam	0.0006	167.17	168.33	167.67	- 0.69	- 0.30
093 Matches	0.0505	165.53	165.53	162.62	+ 0.00	+ 1.79
<b>Metal Product, Machinery &amp; Eq</b>	<b>8.7156</b>	<b>174.49</b>	<b>174.43</b>	<b>170.44</b>	<b>+ 0.03</b>	<b>+ 2.38</b>
094 Pig Iron	0.0593	128.97	128.97	128.97	+ 0.00	+ 0.00
095 Steel Bar & Sheets	1.4022	129.50	129.19	123.59	+ 0.24	+ 4.78
096 Pipe Fittings	0.0780	214.33	214.33	193.06	+ 0.00	+ 11.02
097 Steel Products	0.3879	177.41	177.41	176.83	+ 0.00	+ 0.33
098 Engines & Motors	0.0046	116.98	116.98	109.24	+ 0.00	+ 7.09
099 Vacuum Pumps	0.0155	123.69	123.69	115.39	+ 0.00	+ 7.19
100 Air Conditioners	0.0049	200.10	200.10	200.18	+ 0.00	- 0.04
101 Cultivators	0.0551	190.66	190.66	219.76	+ 0.00	- 13.24
102 Chuff Cutter	0.1293	153.46	153.46	149.20	+ 0.00	+ 2.86
103 Tractors	0.0028	201.75	201.75	205.43	+ 0.00	- 1.79
104 Lathe Machines	0.0525	241.06	241.06	208.81	+ 0.00	+ 15.44
105 Concrete Mixture	0.0107	138.83	138.83	138.83	+ 0.00	+ 0.00
106 Fridge, WashM, SewM, Fans, Iron	1.1645	207.15	207.15	199.42	+ 0.00	+ 3.88
107 Electric Wires	0.0912	204.51	204.51	195.19	+ 0.00	+ 4.77
108 Lighting Equipments	1.4431	170.73	170.73	167.30	+ 0.00	+ 2.05
109 Radio & Television	0.1843	140.42	140.42	126.49	+ 0.00	+ 11.01
110 Motor Vehicles	0.0244	191.39	191.39	185.25	+ 0.00	+ 3.31
111 Motorcycles	0.2570	125.89	125.89	125.89	+ 0.00	+ 0.00
112 Bicycles	3.3483	187.65	187.65	185.63	+ 0.00	+ 1.09