

Monthly Review on Price Indices



January, 2017
(Base 2007-08)

Government of Pakistan
Statistics Division
Pakistan Bureau of Statistics
Islamabad

Inflation in Brief

1. CPI inflation General increased by 3.7% on year-on-year basis in January 2017 as compared to an increase of 3.7% in the previous month and 3.3% in January 2016. On month-on-month basis, it increased by 0.2% in January 2017 as compared to a decrease of 0.7% in the previous month and an increase of 0.2% in January 2016.
2. Core inflation measured by non-food non-energy CPI (Core NFNE) increased by 5.4% on (YoY) basis in January 2017 as compared to increase of 5.2% in the previous month and 4.3% in January 2016. On (MoM) basis, it increased by 1.1% in January 2017 as compared to increase of 0.1% in previous month, and an increase of 0.9% in corresponding month of last year i.e. January 2016.
3. Core inflation, measured by 20% weighted trimmed mean CPI (Core Trimmed) increased by 3.8% on (YoY) basis in January 2017 as compared to 3.7% in the previous month and by 3.0% in January 2016. On (MoM) basis, it increased by 0.6% in January 2017 as compared to an increase of 0.1% in the previous month and an increase of 0.6% in corresponding month of last year i.e. January 2016.
4. SPI inflation on YoY increased by 0.4% in January 2017 as compared to an increase of 0.5% a month earlier and an increase of 3.1% in January 2016. On MoM basis, it decreased by 0.8% in January 2017 as compared to a decrease of 0.8% a month earlier and a decrease of 0.7% in January 2016.
5. WPI inflation on YoY basis increased by 4.2% in January 2017 as compared to an increase of 3.1% a month earlier and an increase of 0.1% in January 2016. WPI inflation on MoM basis increased by 0.5% in January 2017 as compared to decrease of 0.1% a month earlier and a decrease of 0.5% in corresponding month of last year i.e. January 2016.
6. Figures 1 and 2 show graphically the data of Table 1. Table 1.1 shows "Period Average" and "YoY" percent changes in indices of three years.

Table 1: Inflation (%) (Base 2007-08)

Period	CPI						Core Inflation				SPI**		WPI	
	General		Food		Non-food		NFNE*		Trimmed		YoY	MoM	YoY	MoM
	YoY	MoM	YoY	MoM	YoY	MoM	YoY	MoM	YoY	MoM				
Dec 15	3.2	-0.6	2.7	-1.6	3.6	0.2	4.1	0.2	2.7	0.2	2.9	-0.7	-0.4	-0.6
Jan 16	3.3	0.2	2.5	-0.6	3.9	0.8	4.3	0.9	3.0	0.6	3.1	-0.7	0.1	-0.5
Feb 16	4.0	-0.3	3.7	-0.7	4.2	0.0	4.5	0.2	3.6	0.1	3.6	-0.5	0.6	-0.6
Mar 16	3.9	0.1	3.7	0.5	4.1	-0.1	4.7	0.2	3.8	0.2	3.5	-0.2	0.2	-0.4
April 16	4.2	1.5	4.7	2.4	3.8	1.0	4.4	1.1	3.8	0.6	2.9	-0.1	0.6	1.3
May 16	3.2	-0.2	2.1	-0.7	3.9	0.2	4.6	0.2	3.6	0.2	0.6	-1.0	0.0	0.6
June 16	3.2	0.6	2.3	1.4	3.8	0.1	4.6	0.1	3.7	0.2	0.7	1.1	0.2	1.4
July 16	4.1	1.3	4.7	2.5	3.7	0.5	4.5	0.6	3.6	0.5	1.7	1.3	3.0	2.3
Aug 16	3.6	-0.3	3.4	-0.9	3.7	0.2	4.6	0.2	3.5	0.1	2.2	0.2	3.5	0.0
Sep 16	3.9	0.2	4.0	0.1	3.8	0.2	4.8	0.3	3.7	0.1	1.8	0.1	3.4	-0.5
Oct 16	4.2	0.8	4.4	0.8	4.1	0.8	5.2	0.9	3.8	0.6	1.3	0.7	2.8	-0.0
Nov 16	3.8	0.2	3.3	0.2	4.2	0.2	5.3	0.2	3.8	0.2	0.6	0.3	2.6	-0.2
Dec 16	3.7	-0.7	3.0	-1.9	4.2	0.2	5.2	0.1	3.7	0.1	0.5	-0.8	3.1	-0.1
Jan 17	3.7	0.2	2.6	-1.0	4.4	1.0	5.4	1.1	3.8	0.6	0.4	-0.8	4.2	0.5

*NFNE is non-food non-energy, ** SPI for quintile 1. Digits 0.0* are due to rounding off.

Table 1.1 : Period Average and YoY % Changes of Indices (Base 2007-08)

Index	Averages July-January % Changes			January over January % Changes		
	2016-17	2015-16	2014-15	2017	2016	2015
CPI	3.85	2.26	5.77	3.66	3.32	3.88
SPI	1.21	0.65	3.14	0.41	3.12	1.13
WPI	3.33	-2.01	1.48	4.15	0.08	-2.42

Figure 2: CPI Inflation MoM, Special Indices

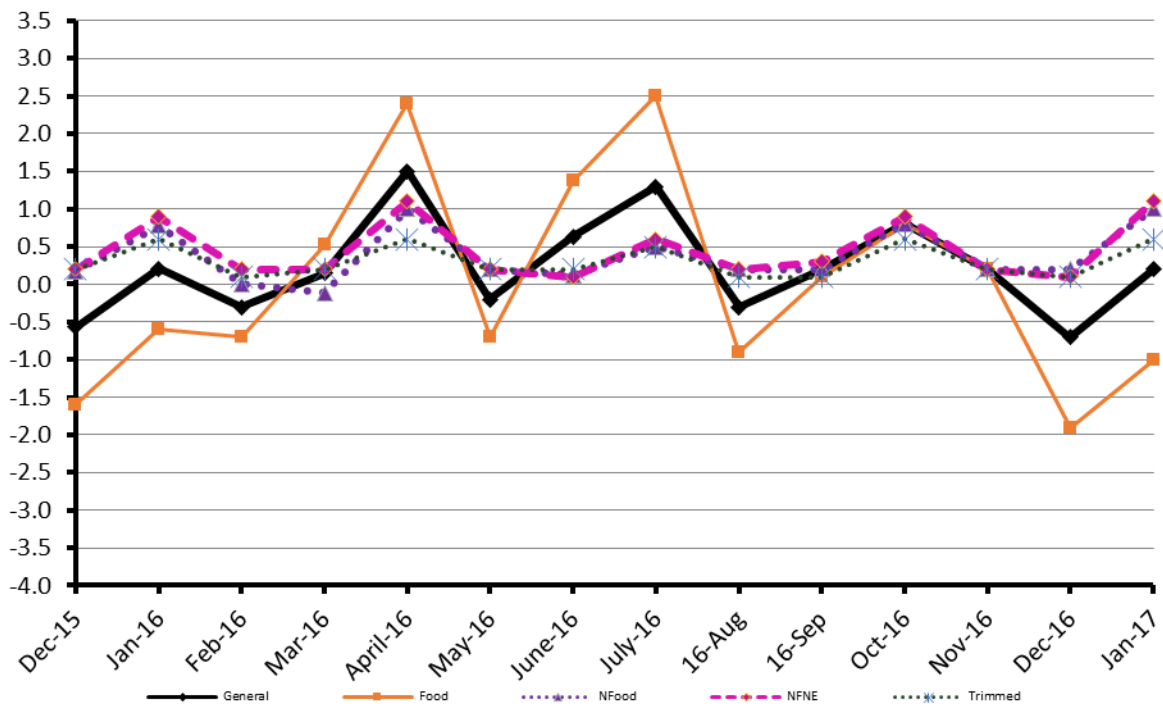
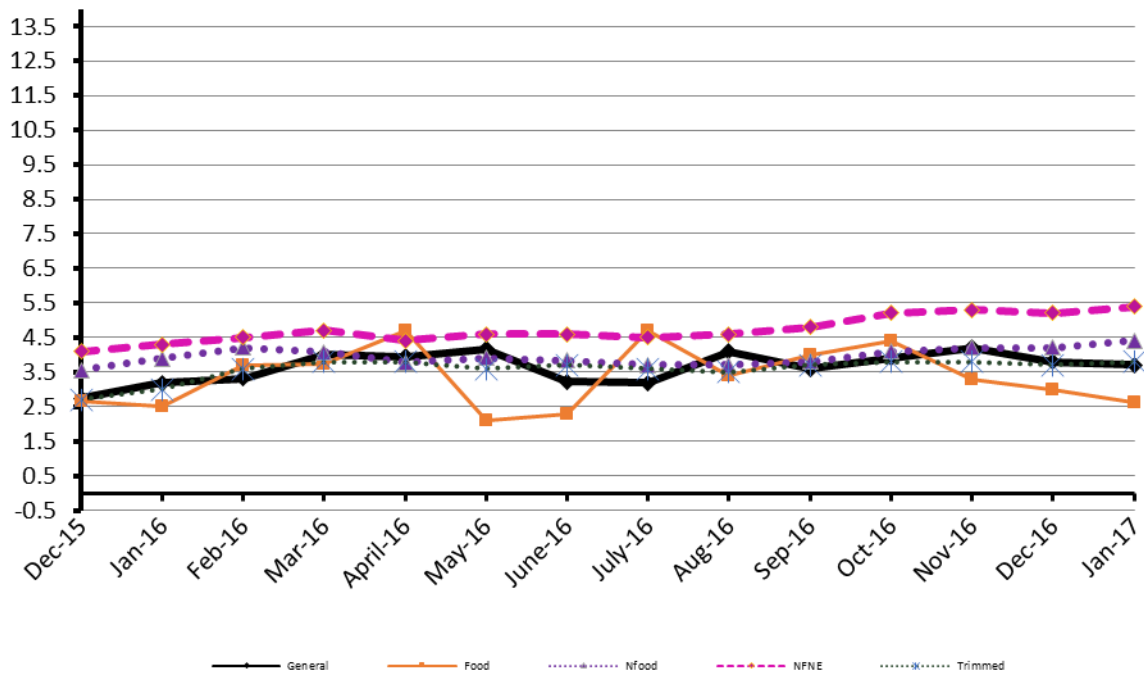


Figure 1: CPI Inflation YoY, Special Indices



II. Consumer Price Index (CPI)

The Consumer Price Index of January 2017, has increased by 0.18% over December 2016 and increased by 3.66% over corresponding month of the last year i.e. January 2016.

Table 2 : Consumer Price Index by Group of Commodities and Services (Base 2007-08)

No	Group	Group Weight (%)	Indices			% Change January 2017 Over		Impact (In % points) January 2017 Over	
			Jan 2017	Dec 2016	Jan 2016	Dec 2016	Jan 2016	Dec 2016	Jan 2016
	General	100.00	210.94	210.57	203.49	0.18	3.66	0.18	3.66
1.	Food & Non-alcoholic Bev.	34.83	220.96	223.58	216.71	-1.17	1.96	-0.43	0.73
	<i>Non-perishable Food Items</i>	29.84	224.82	224.79	220.67	0.01	1.88	0.00	0.61
	<i>Perishable Food Items</i>	4.99	197.89	216.30	193.08	-8.51	2.49	-0.44	0.12
2.	Alcoholic Bev. & Tobacco	1.41	377.97	373.34	337.14	1.24	12.11	0.03	0.28
3.	Clothing & Footwear	7.57	234.02	233.48	224.36	0.23	4.31	0.02	0.36
4.	Housing, Water, Electricity, Gas & Fuels	29.41	194.42	191.70	185.36	1.42	4.89	0.38	1.31
5.	Furnishing & Household Equipment Maintenance	4.21	223.92	223.65	217.23	0.12	3.08	0.01	0.14
6.	Health	2.19	208.45	195.93	181.45	6.39	14.88	0.13	0.29
7.	Transport	7.20	172.81	172.01	177.96	0.47	-2.89	0.03	-0.18
8.	Communication	3.22	131.54	131.53	130.61	0.01	0.71	0.00	0.01
9.	Recreation & Culture	2.02	196.73	196.50	193.80	0.12	1.51	0.00	0.03
10.	Education	3.94	233.41	233.40	209.36	0.00	11.49	0.00	0.47
11.	Restaurants & Hotels	1.23	268.90	268.22	257.11	0.25	4.59	0.00	0.07
12.	Miscellaneous	2.76	238.58	237.77	227.33	0.34	4.95	0.01	0.15

Main contributors to month-on-month and year-on-year percentage changes are given below and detail is given in Annexure A.

- Month-on-month** Top few commodities which varied from previous month are given below:-

Food Items Increased: Fresh Fruits (3.81%), Sugar (3.1%), Cigarettes (1.26%), and Rice (1.03%).

Decreased: Tomatoes (39.98%), Potatoes (29.65%), Fresh Vegetables (10.46%), Pulse Mash (3.78%), Pulse Moong (3.69%), Eggs (2.68%), Pulse Masoor (2.53%), Besan (2.38%), Chicken (2.38%), and Pulse Gram (2.07%).

Non-food Items Increased: Drugs & Medicines (13.02%), House rent (2.0%), Motor Fuel (1.19%), and Woolen Readymade garments (1.07%).

Decreased: Dopatta (0.1%).

- Year-on-Year:** Top few commodities which varied from previous year i.e. January 2016 are given below:-

Food Items Increased: Gram Whole (40.21%), Pulse Gram (34.05%), Besan (28.65%), Eggs (22.21%), Potatoes (18.98%), Fresh Vegetables (15.48%), Cigarettes (12.18%), Sugar (8.51%), Fresh Fruits (8.01%), and Betel Leaves and Nuts (6.08%).

Decreased: Onion (39.07%), Tomatoes (20.62%), Chicken (16.97%), Pulse Moong (13.38%), Pulse Mash (10.86%) and Tea (6.23%).

Non-food Items Increased: Drugs & Medicines (22.88%), Education (11.49%), Medical Equipments (9.62%), Doctor (MBBS) Clinic Fee (8.55%), Tailoring (7.99%), Water Supply (7.43%), Personal Equipments (6.92%), and House Rent (6.62%).

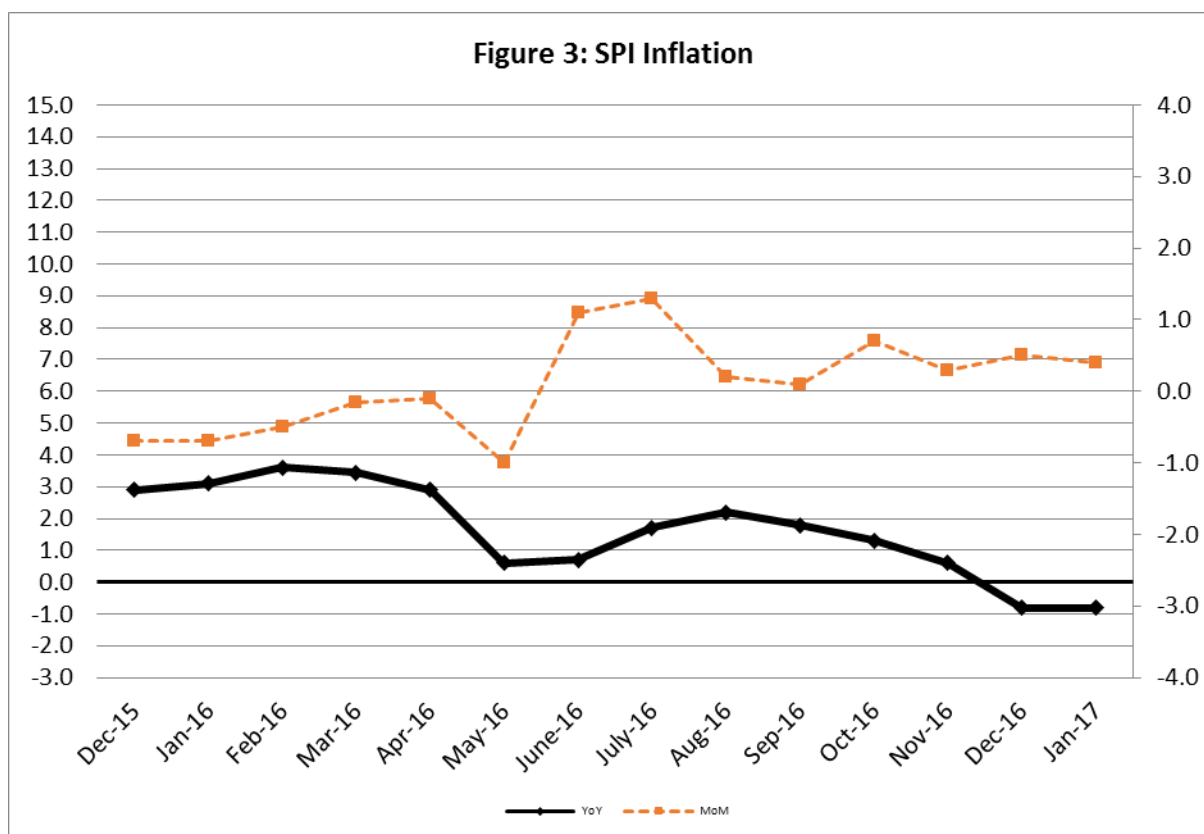
Decreased: Motor Vehicle Accessories (6.34%), and Motor Fuel (5.92%).

III. Sensitive Price Indicator

Quintile-wise percentage changes YoY and MoM are given below in Table 3. The series from December 2015 to January 2017 is also graphed below in Figure 3.

Table 3: Sensitive Price Indicator (Base 2007-08)					
Quintiles	Indices			% Change Jan 2017 over	
	Jan 2017	Dec 2016	Jan 2016	Dec 2016	Jan 2016
1	209.06	210.74	208.21	-0.80	0.41
2	216.45	218.08	215.52	-0.75	0.43
3	217.53	219.12	216.54	-0.73	0.46
4	222.27	223.75	221.24	-0.66	0.47
5	219.39	220.49	218.53	-0.50	0.39
Combined	218.35	219.73	217.47	-0.63	0.40

Table 3.1 : Weekly Percentage Change of SPI During January-17				
Quintiles	% Change with Previous week			
	5 th Jan-2017	12 th Jan-2017	19 th Jan-2017	26 th Jan-2017
Quantile 1	-0.11	0.14	0.08	0.08
Combined	-0.12	0.17	0.12	0.16



IV. Wholesale Price Index

The Wholesale Price Index for January, 2017 increased by 0.51% over December, 2016. It increased by 4.15% over the corresponding month of the last year. YoY and MoM movements, from December, 2015 to January, 2017 are also graphed below in Figure 4.

Table 4 : Wholesale Price Index by Group of Commodities (Base 2007-08)

No.	Group	Group Weight (%)	Indices			% Change January, 2017 over		Impact (in %age points) January, 2017 over	
			Jan 2017	Dec 2016	Jan 2016	Dec 2016	Jan 2016	Dec 2016	Jan 2016
	General	100.00	214.84	213.76	206.27	0.51	4.15	0.51	4.15
1.	Agriculture, Forestry & Fishery Products	25.77	240.28	240.83	221.90	-0.23	8.28	-0.07	2.30
2.	Ores & Minerals, Electricity, Gas & Water	12.04	242.43	242.61	247.48	-0.07	-2.04	-0.01	-0.30
3.	Food Products, Beverages & Tobacco, Textiles, Apparel & Leather Products	31.11	226.31	224.74	214.54	0.70	5.49	0.23	1.78
	i. Food Products, Bev. & Tobacco	20.07	238.67	236.67	227.97	0.85	4.69	0.19	1.04
	ii. Textiles and Apparel	10.33	204.12	203.15	189.58	0.48	7.67	0.05	0.73
	iii. Leather Products	0.71	199.75	201.69	198.07	-0.96	0.85	-0.01	0.01
4.	Other Transportable Goods except Metal Products, Machinery & Equipment	22.37	170.47	167.14	168.43	1.99	1.21	0.35	0.22
5.	Metal Products, Machinery & Equipment	8.72	174.43	174.28	170.69	0.09	2.19	0.01	0.16

Main contributors to month-on-month and year-on-year percentage changes are given below and detail is given in Annexure B.

1. **Month-on-month** Top few commodities which varied from previous month i.e. December, 2016 are given below:-

Increased: Furnace Oil (12.19%), Fresh Fruits (6.04%), Pipe Fittings (5.33%), Other Oil Seeds (3.92%), Vegetable & Fruit Juice (3.85%), Sugar (3.80%), Rice (3.39%), Medicines (3.06%), Motor Spirit (2.76%), Insecticides (2.62%) and Tobacco Products (2.49%).

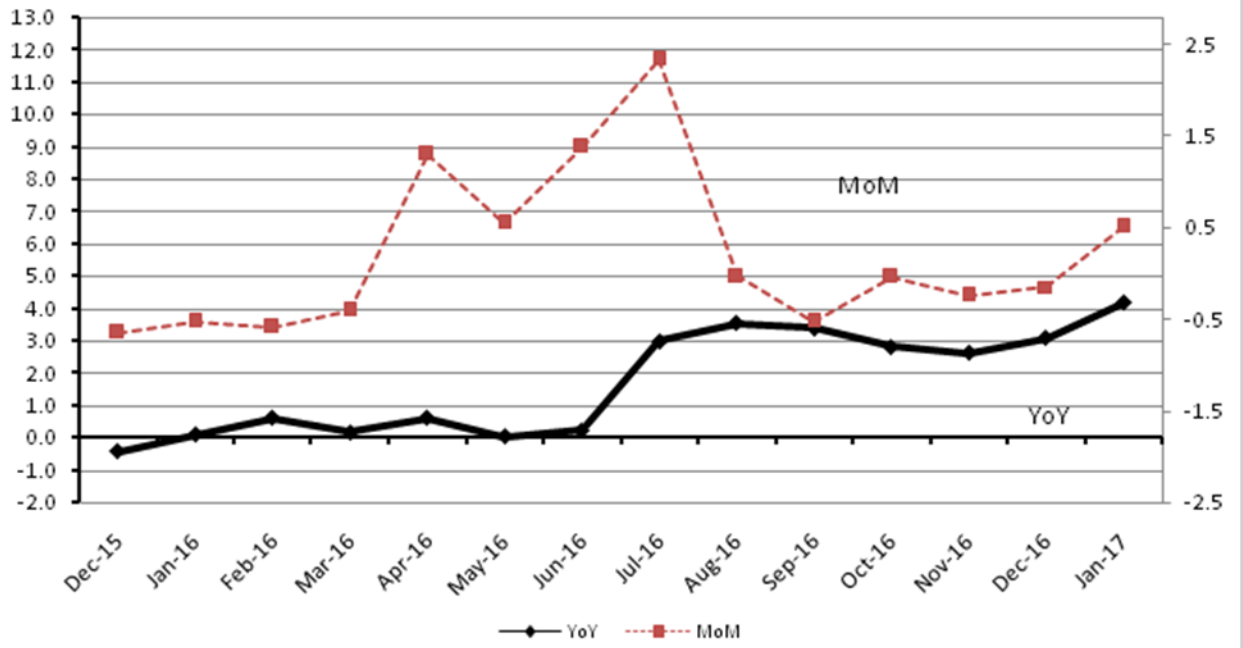
Decreased: Potatoes (27.83%), Vegetables (10.80%), Eggs (5.44%), Pulses (3.93%), Other Cereal Flour (3.23%), Dry Fruits (2.56%), Stimulant & Spice Crops (2.23%), Leather without Hair (2.05%) and Hides & Fur Skins (2.00%).

2. **Year-on-year** Top few commodities which varied from previous year i.e. January, 2016 are given below:-

Increased: Furnace Oil (116.32%), Other Cereal Flour (37.42%), Fish (30.28%), Glass Sheets (28.49%), Woolen Carpets (26.93%), Other Glass Articles (25.75%), Eggs (22.84%), Unmanufactured Tobacco (19.52%), Fiber Crops (18.69%), Medicines (18.27%), Pulses (17.05%), Other Oil Seeds (16.47%), Lathe Machines (15.44%) and Tobacco Products (15.12%).

Decreased: Hides & Fur Skins (24.94%), Fertilizers (20.50%), Poultry (20.41%), Coal (19.19%), Cultivators (13.24%), Stimulant & Spice Crops (11.94%), Motor spirit (10.71%), Kerosene Oil (10.10%) and Jowar (10.06%).

Figure 4: WPI Inflation



Annexure A: Consumer Price Index Numbers by Commodity Groups & Commodities (2007-08=100)

Item and Specification	Weight	Index Numbers			% Change in Jan 2017 over	
		Jan 17	Dec 16	Jan 16	Dec 2016	Jan 2016
General	100.0000	210.94	210.57	203.49	+ 0.18	+ 3.66
Food and non-alcoholic Bevera	34.8343	220.96	223.58	216.71	- 1.17	+ 1.96
01 Wheat	0.3477	206.77	205.54	207.61	+ 0.60	- 0.40
02 Wheat Flour	4.1648	213.27	213.35	217.29	- 0.04	- 1.85
03 Wheat Product	0.0959	217.11	217.16	216.36	- 0.02	+ 0.35
04 Besan	0.1500	342.04	350.39	265.87	- 2.38	+ 28.65
05 Rice	1.5821	162.33	160.68	156.97	+ 1.03	+ 3.41
06 Cereals	0.1563	253.51	253.48	244.57	+ 0.01	+ 3.66
07 Bakery & Confectionary	1.1550	216.35	216.31	210.44	+ 0.02	+ 2.81
08 Nimco	0.4574	250.60	250.57	245.20	+ 0.01	+ 2.20
09 Meat	2.4303	267.47	266.71	258.70	+ 0.28	+ 3.39
10 Chicken	1.3596	153.54	157.28	184.93	- 2.38	- 16.97
11 Fish	0.2970	218.20	218.75	223.97	- 0.25	- 2.58
12 Milk Fresh	6.6800	267.90	267.57	259.06	+ 0.12	+ 3.41
13 Milk Products	0.6338	257.80	257.72	250.44	+ 0.03	+ 2.94
14 Milk Powder	0.1129	236.11	236.55	233.68	- 0.19	+ 1.04
15 Eggs	0.4555	251.58	258.52	205.86	- 2.68	+ 22.21
16 Mustard Oil	0.0952	156.91	156.65	154.93	+ 0.17	+ 1.28
17 Cooking Oil	1.7538	135.30	134.91	132.05	+ 0.29	+ 2.46
18 Vegetable Ghee	2.0714	140.90	139.83	135.63	+ 0.77	+ 3.89
19 Dry Fruits	0.2543	265.17	265.05	261.69	+ 0.05	+ 1.33
20 Fresh Fruits	1.8649	219.65	211.59	203.36	+ 3.81	+ 8.01
21 Pulse Masoor	0.2712	201.31	206.54	204.23	- 2.53	- 1.43
22 Pulse Moong	0.2336	262.78	272.85	303.36	- 3.69	- 13.38
23 Pulse Mash (Washed)	0.2098	308.62	320.74	346.21	- 3.78	- 10.86
24 Pulse Gram	0.2361	365.37	373.11	272.57	- 2.07	+ 34.05
25 Gram Whole	0.1616	314.06	318.41	224.00	- 1.37	+ 40.21
26 Beans	0.0269	231.08	230.80	233.35	+ 0.12	- 0.97
27 Potatoes	0.4776	166.57	236.78	140.00	- 29.65	+ 18.98
28 Onion	0.5417	163.19	162.08	267.82	+ 0.68	- 39.07
29 Tomatoes	0.4496	98.21	163.62	123.72	- 39.98	- 20.62
30 Fresh Vegetables	1.6571	220.80	246.60	191.20	- 10.46	+ 15.48
31 Sugar	1.0445	232.55	225.55	214.31	+ 3.10	+ 8.51
32 Gur	0.0220	266.60	268.12	267.27	- 0.57	- 0.25
33 Honey	0.0446	319.03	317.30	307.36	+ 0.55	+ 3.80
34 SweetMeat	0.2483	245.95	245.95	239.94	+ 0.00	+ 2.50
35 Beverages	1.1990	218.57	218.49	215.29	+ 0.04	+ 1.52
36 Jam, Tomato Ketchup & Pickles	0.2454	216.69	216.60	212.15	+ 0.04	+ 2.14
37 Condiments	0.2656	265.97	265.42	261.47	+ 0.21	+ 1.72
38 Spices	0.5441	238.31	238.63	238.16	- 0.13	+ 0.06
39 Tea	0.8377	266.44	264.16	284.13	+ 0.86	- 6.23
Alcoholic Beverages, Tobacco	1.4135	377.97	373.34	337.14	+ 1.24	+ 12.11
40 Cigarettes	1.3906	380.19	375.47	338.92	+ 1.26	+ 12.18
41 Betel Leaves & Nuts	0.0229	242.96	243.86	229.04	- 0.37	+ 6.08
Clothing and footwear	7.5708	234.02	233.48	224.36	+ 0.23	+ 4.31
42 Cotton Cloth	1.7286	225.84	225.47	215.77	+ 0.16	+ 4.67
43 Woolen Cloth	0.8759	254.50	253.61	240.17	+ 0.35	+ 5.97
44 Readymade Garments	0.9739	239.29	239.41	228.16	- 0.05	+ 4.88
45 Woolen Readymade Garments	0.3964	265.41	262.60	260.80	+ 1.07	+ 1.77
46 Hosiery	0.5094	245.83	245.88	238.25	- 0.02	+ 3.18
47 Dopatta	0.4412	242.99	243.24	238.99	- 0.10	+ 1.67
48 Cleaning and Laundry	0.2110	259.00	257.94	249.00	+ 0.41	+ 4.02
49 Tailoring	0.8840	310.40	308.64	287.43	+ 0.57	+ 7.99
50 Footwear	1.5504	166.84	166.82	165.25	+ 0.01	+ 0.96
Housing, water, Elec., Gas an	29.4149	194.42	191.70	185.36	+ 1.42	+ 4.89
51 House Rent	21.8149	185.86	182.22	174.32	+ 2.00	+ 6.62
52 Construction Input Items	0.5623	249.60	249.23	242.65	+ 0.15	+ 2.86
53 Construction Wage Rates	0.3331	234.42	234.08	224.27	+ 0.15	+ 4.53
54 Water Supply	0.4971	164.74	164.74	153.34	+ 0.00	+ 7.43
55 Electricity	4.3985	238.10	238.10	238.10	+ 0.00	+ 0.00

Annexure A: Consumer Price Index Numbers by Commodity Groups & Commodities (2007-08=100)

Item and Specification	Weight	Index Numbers			% Change in Jan 2017 over	
		Jan 17	Dec 16	Jan 16	Dec 2016	Jan 2016
56 Gas	1.5756	158.08	158.08	158.08	+ 0.00	+ 0.00
57 Kerosene Oil	0.0057	198.47	198.63	203.32	- 0.08	- 2.39
58 Firewood Whole	0.2277	292.43	290.35	284.11	+ 0.72	+ 2.93
<i>Furnishing and household equi</i>	4.2082	223.92	223.65	217.23	+ 0.12	+ 3.08
59 Furniture	0.3315	215.79	215.42	207.96	+ 0.17	+ 3.77
60 Household Textiles	0.6489	226.38	226.07	216.16	+ 0.14	+ 4.73
61 Household Equipment	0.5936	179.16	179.28	176.48	- 0.07	+ 1.52
62 Utensils	0.3212	226.40	225.53	219.40	+ 0.39	+ 3.19
63 Plastic Products	0.2547	209.10	208.70	206.03	+ 0.19	+ 1.49
64 Washing Soaps & Detergents	0.7893	230.09	229.76	226.88	+ 0.14	+ 1.41
65 Sewing Needle & Dr Cell	0.1496	204.24	202.74	202.56	+ 0.74	+ 0.83
66 Household Servant	1.0432	249.98	249.98	239.42	+ 0.00	+ 4.41
67 Marriage Hall Charges	0.0762	243.95	243.95	237.37	+ 0.00	+ 2.77
<i>Health</i>	2.1868	208.45	195.93	181.45	+ 6.39	+ 14.88
68 Drugs & Medicines	1.2667	183.44	162.31	149.28	+ 13.02	+ 22.88
69 Medical Equipments	0.0080	248.70	248.70	226.88	+ 0.00	+ 9.62
70 Doctor (MBBS) Clinic Fee	0.5904	271.39	270.37	250.01	+ 0.38	+ 8.55
71 Medical Tests	0.3217	190.38	190.38	181.17	+ 0.00	+ 5.08
<i>Transport</i>	7.2023	172.81	172.01	177.96	+ 0.47	- 2.89
72 Motor Vehicles	0.6630	171.79	171.60	165.35	+ 0.11	+ 3.89
73 Motor Vehicle Accessories	0.2439	213.33	213.37	227.78	- 0.02	- 6.34
74 Motor Fuel	3.0269	141.65	139.99	150.56	+ 1.19	- 5.92
75 Mechanical Service	0.4552	228.81	227.84	222.39	+ 0.43	+ 2.89
76 Motor Vehicle Tax	0.1099	210.18	210.18	210.18	+ 0.00	+ 0.00
77 Transport Services	2.7034	193.34	193.28	198.46	+ 0.03	- 2.58
<i>Communication</i>	3.2198	131.54	131.53	130.61	+ 0.01	+ 0.71
78 Postal Services	0.0662	245.18	244.89	235.86	+ 0.12	+ 3.95
79 Communication & Apparatus	3.1536	129.15	129.15	128.40	+ 0.00	+ 0.58
<i>Recreation and culture</i>	2.0227	196.73	196.50	193.80	+ 0.12	+ 1.51
80 Recreation & Culture	0.8634	129.45	129.41	128.53	+ 0.03	+ 0.72
81 Text Books	0.5706	292.41	292.41	290.62	+ 0.00	+ 0.62
82 Newspapers	0.1934	179.20	177.62	175.42	+ 0.89	+ 2.15
83 Stationery	0.3953	214.16	213.85	205.59	+ 0.14	+ 4.17
<i>Education</i>	3.9431	233.41	233.40	209.36	+ 0.00	+ 11.49
84 Education	3.9431	233.41	233.40	209.36	+ 0.00	+ 11.49
<i>Restaurants and hotels</i>	1.2286	268.90	268.22	257.11	+ 0.25	+ 4.59
85 Readymade Food	1.2286	268.90	268.22	257.11	+ 0.25	+ 4.59
<i>Misc. goods and services</i>	2.7550	238.58	237.77	227.33	+ 0.34	+ 4.95
86 Personal Care	1.4935	219.78	219.13	211.12	+ 0.30	+ 4.10
87 Cosmetics	0.3853	202.56	201.47	196.94	+ 0.54	+ 2.85
88 Blades	0.0322	196.34	195.66	194.65	+ 0.35	+ 0.87
89 Personal Equipments	0.8440	289.89	288.94	271.14	+ 0.33	+ 6.92

Annexure B: Wholesale Price Indices by Major Groups & Commodities

(2007-08=100)

Item and Specification	Weight	Index Numbers			% Change in Jan 2017 over	
		Jan 17	Dec 16	Jan 16	Dec 2016	Jan 2016
General	100.0000	214.84	213.76	206.27	+ 0.51	+ 4.15
Agriculture Forestry & Fisher	25.7674	240.28	240.83	221.90	- 0.23	+ 8.28
001 Wheat	0.6297	214.17	212.55	218.54	+ 0.76	- 2.00
002 Maize	0.6764	186.37	186.79	181.99	- 0.22	+ 2.41
003 Rice	2.4413	153.30	148.27	143.44	+ 3.39	+ 6.87
004 Sorghum / Jowar	0.0214	236.93	236.86	263.42	+ 0.03	- 10.06
005 Millet / Bajra	0.0374	167.74	168.85	182.56	- 0.66	- 8.12
006 Vegetables	1.2441	203.45	228.09	198.21	- 10.80	+ 2.64
007 Fresh Fruits	1.5144	221.77	209.13	214.11	+ 6.04	+ 3.58
008 Dry Fruits	0.2478	242.90	249.28	253.58	- 2.56	- 4.21
009 Cotton Seeds	1.1511	266.81	267.33	265.71	- 0.19	+ 0.41
010 Other Oil Seeds	0.0722	189.43	182.29	162.64	+ 3.92	+ 16.47
011 Edible Roots / Potatoes	0.2540	171.38	237.47	150.23	- 27.83	+ 14.08
012 Stimulant & Spice Crops	0.1634	221.64	226.70	251.68	- 2.23	- 11.94
013 Pulses	0.4901	294.48	306.52	251.59	- 3.93	+ 17.05
014 Sugar Crops	1.0725	268.94	268.94	286.29	+ 0.00	- 6.06
015 Fibre Crops	5.3169	207.18	204.48	174.55	+ 1.32	+ 18.69
016 Unmanufactured Tobacco	0.0742	274.91	271.72	230.02	+ 1.17	+ 19.52
017 Poultry	0.5633	157.27	160.36	197.60	- 1.93	- 20.41
018 Raw Milk from Bovine Animals	7.0279	268.18	267.02	255.42	+ 0.43	+ 5.00
019 Eggs	0.5034	257.22	272.03	209.40	- 5.44	+ 22.84
020 Raw Animal Materials / Wool	0.0351	177.44	175.58	179.16	+ 1.06	- 0.96
021 Hides & Fur Skins, Raw	0.4834	113.78	116.10	151.58	- 2.00	- 24.94
022 Fuel Wood in Logs	0.0179	277.01	274.82	265.76	+ 0.80	+ 4.23
023 Fish Live Fresh or Chilled	1.7295	446.03	447.84	342.37	- 0.40	+ 30.28
Ores/Minerals, Elec., Gas & W	12.0389	242.43	242.61	247.48	- 0.07	- 2.04
024 Coal not Agglomerated	0.7508	155.29	155.29	192.16	+ 0.00	- 19.19
025 Natural Gas Liquified	5.7385	210.29	210.67	211.04	- 0.18	- 0.36
026 Salt & Pure Sodium Chloride	0.0584	235.45	235.45	252.31	+ 0.00	- 6.68
027 Electrical Energy	5.4912	288.00	288.00	293.09	+ 0.00	- 1.74
Food, Beverages, Tobacco, Textil	31.1122	226.31	224.74	214.54	+ 0.70	+ 5.49
Food Products, Beverages &	20.0718	238.67	236.67	227.97	+ 0.85	+ 4.69
028 Meat of Animals	3.4559	282.02	280.41	268.44	+ 0.57	+ 5.06
029 Vegetables & Fruit Juice	0.0058	222.28	214.03	201.36	+ 3.85	+ 10.39
030 Dried Fruits & Nuts	0.1733	264.94	261.81	247.99	+ 1.20	+ 6.83
031 Fruit Juices	0.3880	179.58	179.33	175.90	+ 0.14	+ 2.09
032 Vegetable Oils Refined	1.9242	152.91	152.35	149.31	+ 0.37	+ 2.41
033 Vegetable Ghee	1.5632	126.00	125.82	117.91	+ 0.14	+ 6.86
034 Oil Cakes	0.9611	230.47	229.61	218.92	+ 0.37	+ 5.28
035 Processed Liquid Milk	4.4437	257.57	257.57	247.57	+ 0.00	+ 4.04
036 Milk & Cream in Solid Form	0.0316	219.07	218.90	219.09	+ 0.08	- 0.01
037 Ice Cream	0.0047	238.04	238.04	219.91	+ 0.00	+ 8.24
038 Dairy Products N.E.C	0.0117	254.27	252.95	245.35	+ 0.52	+ 3.64
039 Wheat Flour	2.3034	197.36	196.85	202.19	+ 0.26	- 2.39
040 Other Cereal Flour	0.0604	318.36	328.97	231.67	- 3.23	+ 37.42
041 Sugar Refined	1.7975	244.78	235.83	226.45	+ 3.80	+ 8.09
042 Chocolate	0.0139	100.00	100.00	101.06	+ 0.00	- 1.05
043 Sugar Confectionary	0.0738	128.44	128.44	118.83	+ 0.00	+ 8.09
044 Coffee & Tea	0.7303	241.34	240.04	264.10	+ 0.54	- 8.62
045 Spices	0.1449	190.41	190.44	188.40	- 0.02	+ 1.07
046 Other Food Products	0.0336	293.85	293.85	292.52	+ 0.00	+ 0.45
047 Mineral Water	0.0207	198.57	198.57	189.02	+ 0.00	+ 5.05
048 Beverages	0.6303	172.33	172.33	171.95	+ 0.00	+ 0.22
049 Tobacco Products	1.2998	445.85	435.03	387.30	+ 2.49	+ 15.12
Textiles & Apparels	10.3289	204.12	203.15	189.58	+ 0.48	+ 7.67
050 Cotton Yarn	5.2491	196.95	194.35	175.73	+ 1.34	+ 12.08
051 Nylon Yarn	0.1719	143.99	143.99	147.08	+ 0.00	- 2.10
052 Blended Yarn	0.1689	180.91	180.58	178.32	+ 0.18	+ 1.45
053 Woven Fabrics	0.0128	310.72	310.72	275.66	+ 0.00	+ 12.72
054 Cotton Fabrics	0.6343	209.34	209.34	201.65	+ 0.00	+ 3.81
055 Other Fabrics	1.1016	224.40	224.40	217.81	+ 0.00	+ 3.03
056 Silk & Reyon Fabrics	0.7350	188.10	189.21	186.80	- 0.59	+ 0.70

Annexure B: Wholesale Price Indices by Major Groups & Commodities

(2007-08=100)

Item and Specification	Weight	Index Numbers			% Change in Jan 2017 over		
		Jan 17	Dec 16	Jan 16	Dec 2016	Jan 2016	
057 Towels	0.1235	271.17	271.17	267.20	+	0.00	+ 1.49
058 Blankets	0.0029	247.52	247.52	243.93	+	0.00	+ 1.47
059 Bed Sheets	0.0913	256.07	257.96	256.29	-	0.73	- 0.09
060 Quilts	0.0019	203.79	203.79	201.47	+	0.00	+ 1.15
061 Woolen Carpets	0.0383	196.43	196.43	154.76	+	0.00	+ 26.93
062 Synthetic Carpets	0.0566	129.25	129.25	129.25	+	0.00	+ 0.00
063 Hosiery Products	0.8832	241.83	241.83	222.52	+	0.00	+ 8.68
064 Readymade Garments	1.0576	199.15	201.70	193.27	-	1.26	+ 3.04
Leather Products	0.7115	199.75	201.69	198.07	-	0.96	+ 0.85
065 Leather Without Hair	0.2973	221.97	226.61	221.97	-	2.05	+ 0.00
066 Other Leather N.E.C	0.2567	207.31	207.31	207.64	+	0.00	- 0.16
067 Footwears	0.1575	145.51	145.51	137.38	+	0.00	+ 5.92
Other Transportable Goods	22.3659	170.47	167.14	168.43	+	1.99	+ 1.21
068 Timber	0.0165	225.41	225.41	216.25	+	0.00	+ 4.24
069 Printing Paper	0.4279	165.63	165.63	161.82	+	0.00	+ 2.35
070 Hard Board	0.1579	220.83	220.83	197.92	+	0.00	+ 11.58
071 Coke	0.2797	163.45	163.45	163.45	+	0.00	+ 0.00
072 Motor Spirit	1.5336	115.01	111.92	128.80	+	2.76	- 10.71
073 Diesel Oil	5.2664	149.57	147.31	155.51	+	1.53	- 3.82
074 Kerosine Oil	0.2151	115.49	115.11	128.46	+	0.33	- 10.10
075 Furnace Oil	3.2664	108.68	96.87	50.24	+	12.19	+ <u>116.32</u>
076 Mobil Oil	0.7114	196.91	196.91	199.78	+	0.00	- 1.44
077 Chemicals	1.7720	177.81	175.83	182.92	+	1.13	- 2.79
078 Dyeing Material	0.1539	146.55	146.55	146.55	+	0.00	+ 0.00
079 Fertilizers	2.8657	215.39	215.07	270.92	+	0.15	- 20.50
080 Pesticides	0.2763	304.43	304.43	312.37	+	0.00	- 2.54
081 Insecticides	0.1276	141.62	138.00	134.66	+	2.62	+ 5.17
082 Paints & Varnishes	0.1916	296.43	296.43	295.36	+	0.00	+ 0.36
083 Medicines	1.1428	173.72	168.57	146.89	+	3.06	+ 18.27
084 Soaps & Detergents	0.8168	190.99	190.20	181.44	+	0.42	+ 5.26
085 Auto Tyres	0.2703	176.87	176.87	192.68	+	0.00	- 8.21
086 Plastic Products	0.4550	225.73	225.73	229.95	+	0.00	- 1.84
087 Glass sheets	0.2089	297.20	297.20	231.30	+	0.00	+ 28.49
088 Other Glass Articles	0.1635	306.37	305.47	243.63	+	0.29	+ 25.75
089 Ceramics & Sanitary Fixture	0.0244	234.18	234.18	226.78	+	0.00	+ 3.26
090 Bricks, Blocks & Tiles	0.1566	219.28	219.02	216.96	+	0.12	+ 1.07
091 Cement	1.8145	217.11	213.07	206.70	+	1.90	+ 5.04
092 Bed Foam	0.0006	168.33	167.17	157.17	+	0.69	+ 7.10
093 Matches	0.0505	165.53	162.62	162.62	+	1.79	+ 1.79
Metal Product, Machinery & Eq	8.7156	174.43	174.28	170.69	+	0.09	+ 2.19
094 Pig Iron	0.0593	128.97	128.97	128.97	+	0.00	+ 0.00
095 Steel Bar & Sheets	1.4022	129.19	127.05	125.33	+	1.68	+ 3.08
096 Pipe Fittings	0.0780	214.33	203.49	193.06	+	5.33	+ 11.02
097 Steel Products	0.3879	177.41	177.38	176.27	+	0.02	+ 0.65
098 Engines & Motors	0.0046	116.98	116.98	109.07	+	0.00	+ 7.25
099 Vacuum Pumps	0.0155	123.69	123.69	115.39	+	0.00	+ 7.19
100 Air Conditioners	0.0049	200.10	199.33	200.18	+	0.39	- 0.04
101 Cultivators	0.0551	190.66	190.66	219.76	+	0.00	- 13.24
102 Chuff Cutter	0.1293	153.46	153.46	149.20	+	0.00	+ 2.86
103 Tractors	0.0028	201.75	201.75	205.43	+	0.00	- 1.79
104 Lathe Machines	0.0525	241.06	241.06	208.81	+	0.00	+ 15.44
105 Concrete Mixture	0.0107	138.83	138.83	138.83	+	0.00	+ 0.00
106 Fridge,WashM,SewM,Fans,Iron	1.1645	207.15	207.15	199.36	+	0.00	+ 3.91
107 Electric Wires	0.0912	204.51	204.51	195.19	+	0.00	+ 4.77
108 Lighting Equipments	1.4431	170.73	172.50	167.30	-	1.03	+ 2.05
109 Radio & Television	0.1843	140.42	140.42	126.49	+	0.00	+ 11.01
110 Motor Vehicles	0.0244	191.39	191.39	184.14	+	0.00	+ 3.94
111 Motorcycles	0.2570	125.89	125.89	125.89	+	0.00	+ 0.00
112 Bicycles	3.3483	187.65	187.65	185.63	+	0.00	+ 1.09