



Monthly Review on Price Indices



May, 2017
(Base 2007-08)

Government of Pakistan
Statistics Division
Pakistan Bureau of Statistics
Islamabad

Inflation in Brief

1. CPI inflation General increased by 5.0% on year-on-year basis in May 2017 as compared to an increase of 4.8% in the previous month and 3.2% in May 2016. On month-on-month basis, it increased by 0.0% in May 2017 as compared to an increase of 1.4% in the previous month and a decrease of 0.2% in May 2016.
2. Core inflation measured by non-food non-energy CPI (Core NFNE) increased by 5.5% on (YoY) basis in May 2017 as compared to increase of 5.5% in the previous month and 4.6% in May 2016. On (MoM) basis, it increased by 0.2% in May 2017 as compared to increase of 1.3% in previous month, and an increase of 0.2% in corresponding month of last year i.e. May 2016.
3. Core inflation, measured by 20% weighted trimmed mean CPI (Core Trimmed) increased by 4.8% on (YoY) basis in May 2017 as compared to 4.8% in the previous month and by 3.6% in May 2016. On (MoM) basis, it increased by 0.2% in May 2017 as compared to an increase of 0.8% in the previous month and an increase of 0.2% in corresponding month of last year i.e. May 2016.
4. SPI inflation on YoY increased by 2.4% in May 2017 as compared to an increase of 2.3% a month earlier and an increase of 0.6% in May 2016. On MoM basis, it decreased by 0.9% in May 2017 as compared to a decrease of 0.9% a month earlier and a decrease of 1.0% in May 2016.
5. WPI inflation on YoY basis increased by 5.2% in May 2017 as compared to an increase of 6.0% a month earlier and an increase of 0.0% in May 2016. WPI inflation on MoM basis decreased by 0.2% in May 2017 as compared to an increase of 0.9% a month earlier and an increase of 0.6% in corresponding month of last year i.e. May 2016.
6. Figures 1 and 2 show graphically the data of Table 1. Table 1.1 shows "Period Average" and "YoY" percent changes in indices of three years.

Table 1: Inflation (%) (Base 2007-08)

Period	CPI						Core Inflation				SPI**		WPI	
	General		Food		Non-food		NFNE*		Trimmed		YoY	MoM	YoY	MoM
	YoY	MoM	YoY	MoM	YoY	MoM	YoY	MoM	YoY	MoM				
April 16	4.2	1.5	4.7	2.4	3.8	1.0	4.4	1.1	3.8	0.6	2.9	-0.1	0.6	1.3
May 16	3.2	-0.2	2.1	-0.7	3.9	0.2	4.6	0.2	3.6	0.2	0.6	-1.0	0.0	0.6
June 16	3.2	0.6	2.3	1.4	3.8	0.1	4.6	0.1	3.7	0.2	0.7	1.1	0.2	1.4
July 16	4.1	1.3	4.7	2.5	3.7	0.5	4.5	0.6	3.6	0.5	1.7	1.3	3.0	2.3
Aug 16	3.6	-0.3	3.4	-0.9	3.7	0.2	4.6	0.2	3.5	0.1	2.2	0.2	3.5	0.0
Sep 16	3.9	0.2	4.0	0.1	3.8	0.2	4.8	0.3	3.7	0.1	1.8	0.1	3.4	-0.5
Oct 16	4.2	0.8	4.4	0.8	4.1	0.8	5.2	0.9	3.8	0.6	1.3	0.7	2.8	-0.0
Nov 16	3.8	0.2	3.3	0.2	4.2	0.2	5.3	0.2	3.8	0.2	0.6	0.3	2.6	-0.2
Dec 16	3.7	-0.7	3.0	-1.9	4.2	0.2	5.2	0.1	3.7	0.1	0.5	-0.8	3.1	-0.1
Jan 17	3.7	0.2	2.6	-1.0	4.4	1.0	5.4	1.1	3.8	0.6	0.4	-0.8	4.2	0.5
Feb 17	4.2	0.3	3.7	0.3	4.6	0.3	5.3	0.2	4.1	0.2	1.1	0.2	5.3	0.5
Mar 17	4.9	0.8	5.0	1.9	4.9	0.1	5.3	0.1	4.5	0.2	3.1	1.8	6.4	0.7
Apr 17	4.8	1.4	4.4	1.7	5.1	1.2	5.5	1.3	4.8	0.8	2.3	-0.9	6.0	0.9
May 17	5.0	0.0	4.9	-0.2	5.1	0.2	5.5	0.2	4.8	0.2	2.4	-0.9	5.2	-0.2

*NFNE is non-food non-energy, ** SPI for quintile 1. Digits 0.0* are due to rounding off.

Table 1.1 : Period Average and YoY % Changes of Indices (Base 2007-08)

Index	Averages July-May % Changes			May over May % Changes		
	2016-17	2015-16	2014-15	2017	2016	2015
CPI	4.18	2.82	4.65	5.02	3.17	3.16
SPI	1.58	1.36	1.80	2.37	0.61	1.24
WPI	4.11	-1.18	-0.14	5.18	0.04	-1.79

Figure 2: CPI Inflation MoM, Special Indices

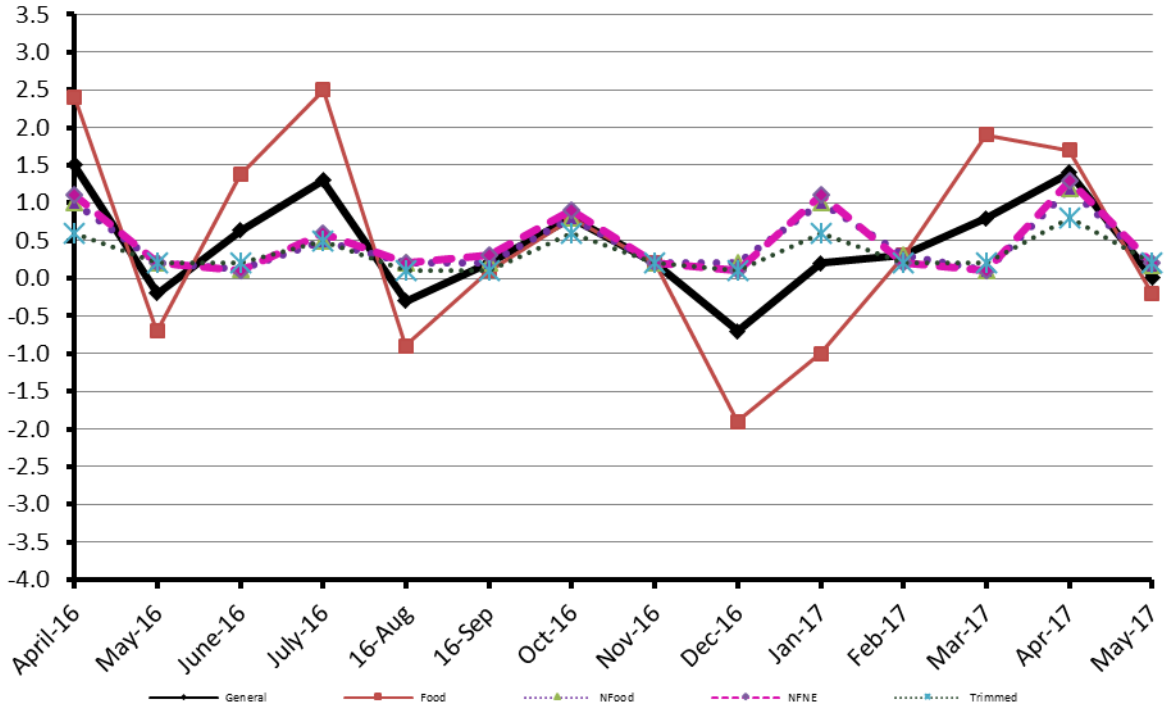
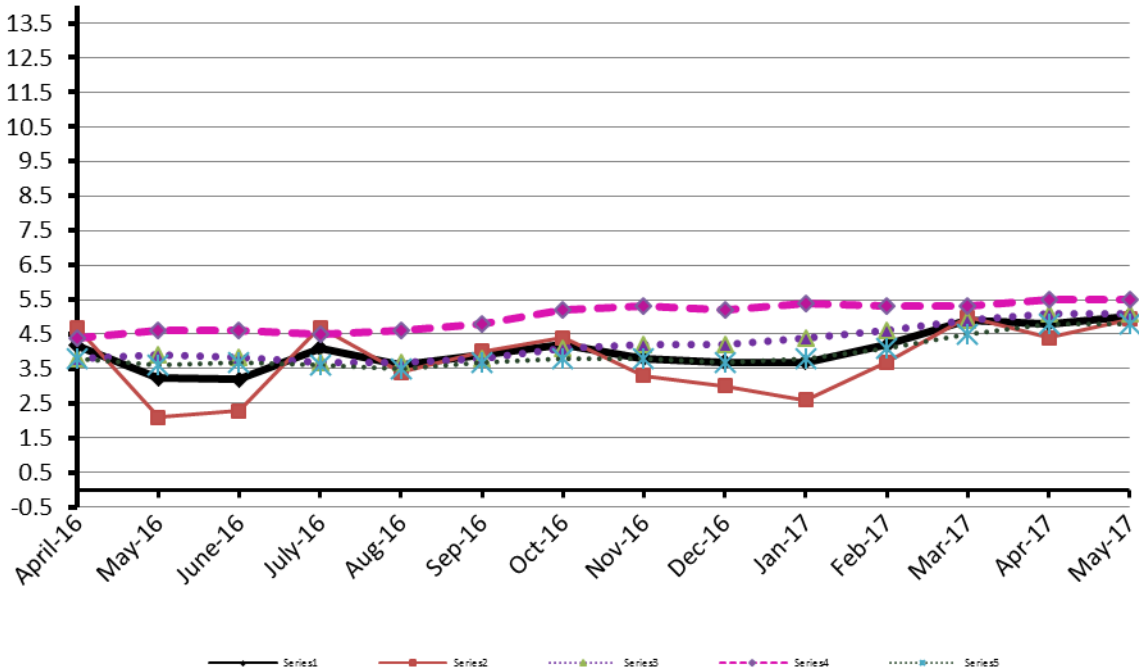


Figure 1: CPI Inflation YoY, Special Indices



II. Consumer Price Index (CPI)

The Consumer Price Index of May 2017, has increased by 0.01% over April 2017 and increased by 5.02% over corresponding month of the last year i.e. May 2016.

Table 2 : Consumer Price Index by Group of Commodities and Services (Base 2007-08)

No	Group	Group Weight (%)	Indices			% Change May 2017 Over		Impact (In % points) May 2017 Over	
			May 2017	Apr 2017	May 2016	Apr 2017	May 2016	Apr 2017	May 2016
	General	100.00	216.33	216.30	205.99	0.01	5.02	0.01	5.02
1.	Food & Non-alcoholic Bev.	34.83	229.65	230.25	219.65	-0.26	4.55	-0.10	1.69
	<i>Non-perishable Food Items</i>	29.84	226.53	226.72	221.23	-0.08	2.40	-0.03	0.77
	<i>Perishable Food Items</i>	4.99	248.26	251.31	210.21	-1.21	18.10	-0.07	0.92
2.	Alcoholic Bev. & Tobacco	1.41	383.32	382.78	346.08	0.14	10.76	0.00	0.26
3.	Clothing & Footwear	7.57	236.71	235.61	228.31	0.47	3.68	0.04	0.31
4.	Housing, Water, Electricity, Gas & Fuels	29.41	196.70	196.62	187.12	0.04	5.12	0.01	1.37
5.	Furnishing & Household Equipment Maintenance	4.21	226.42	224.95	220.71	0.65	2.59	0.03	0.12
6.	Health	2.19	212.65	212.43	187.43	0.10	13.46	0.00	0.27
7.	Transport	7.20	176.43	176.33	169.31	0.06	4.21	0.00	0.25
8.	Communication	3.22	132.87	132.87	130.77	0.00	1.61	0.00	0.03
9.	Recreation & Culture	2.02	196.12	196.02	195.79	0.05	0.17	0.00	0.00
10.	Education	3.94	249.23	249.20	224.19	0.01	11.17	0.00	0.48
11.	Restaurants & Hotels	1.23	277.29	275.88	263.16	0.51	5.37	0.01	0.08
12.	Miscellaneous	2.76	245.99	244.71	233.52	0.52	5.34	0.02	0.17

Main contributors to month-on-month and year-on-year percentage changes are given below and detail is given in Annexure A.

- Month-on-month** Top few commodities which varied from previous month are given below:-

Food Items Increased: Potatoes (19.88%), Fresh Fruits (10.12%), Pulse Gram (2.35%), Rice (2.01%), Beverages (1.8%), Gram Whole (1.76%) and Pulse Mash(Washed) (1.24%).

Decreased: Tomatoes (40.03%), Onion (10.67%), Fresh vegetables (8.95%), Chicken (7.72%), Wheat (5.35%), sugar (2.29%) and Wheat flour (1.43%).

Non-food Items Increased: Water Supply (2.03%), Household Servant (1.4%), Cleaning and Laundry (1.29%), Marriage Hall Charges (1.23%), Motor Vehicles (1.07%), Construction Wage Rates (1.06%) and Blades (1.03%).

Decreased: Kerosene Oil (0.45%).

- Year-on-Year:** Top few commodities which varied from previous year i.e. April 2016 are given below:-

Food Items Increased: Potatoes (70.09%), Tomatoes (59.27%), Eggs (18.12%), Fresh Fruits (16.74%), Rice (15.35%), Fresh Vegetables (14.83%), Tea (12.86%), Gram Whole (11.56%) and Cigarettes (10.84%).

Decreased: Pulse Mash (24.48%), Pulse Moong (17.98%), Pulse Masoor (14.22%), Onion (9.58%), and Chicken (7.39%), Sugar (6.82%) and Pulse Gram (5.32%).

Non-food Items Increased: Drugs & Medicines (20.61%), Education (11.17%), Motor Fuel (10.14%), Doctor (MBBS) Clinic Fee (7.87%), Medical Equipments (7.73%), Tailoring (7.71%), House Rent (6.94%), Water Supply (6.51%), Cleaning and Laundry (6.44%) and Construction Wage Rates (6.0%).

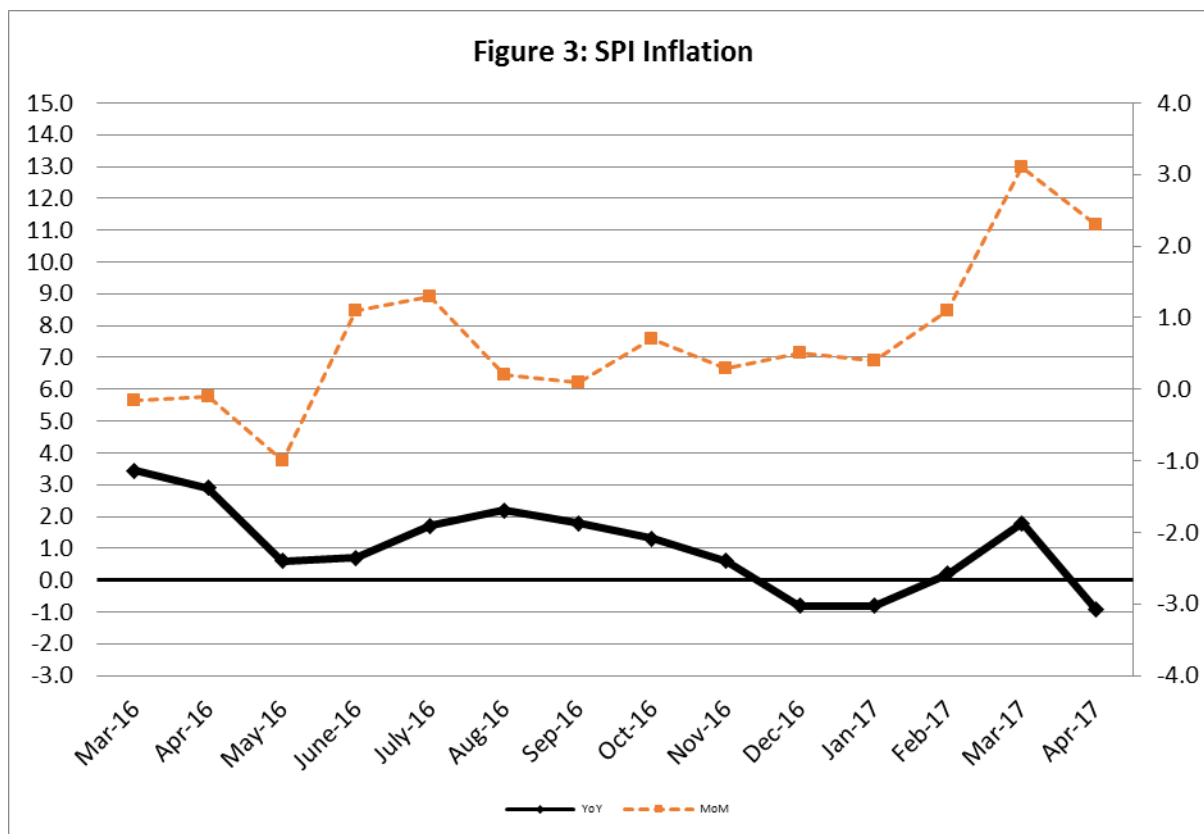
Decreased: Motor Vehicle Accessories (1.54%), Text Books (1.51%) and Sewing Needles & Dry Cell (1.01%).

III. Sensitive Price Indicator

Quintile-wise percentage changes YoY and MoM are given below in Table 3. The series from April 2017 to May 2017 is also graphed below in Figure 3.

Table 3: Sensitive Price Indicator (Base 2007-08)					
Quintiles	Indices			% Change May 2017 over	
	May 2017	Apr 2017	May 2016	Apr 2017	May 2016
1	209.42	211.31	204.57	-0.89	2.37
2	217.49	219.28	212.31	-0.82	2.44
3	219.03	220.76	213.44	-0.78	2.62
4	224.41	226.03	218.17	-0.72	2.86
5	222.49	223.82	215.50	-0.59	3.24
Combined	220.51	222.07	214.35	-0.70	2.87

Table 3.1 : Weekly Percentage Change of SPI During May-17					
Quintiles	% Change with Previous week				
	4 th May-2017	11 th May -2017	18 th May -2017	25 th May-2017	
Quantile 1	-0.02	0.18	-0.02	0.11	
Combined	-0.04	0.21	0.06	0.15	



IV. Wholesale Price Index

The Wholesale Price Index for May, 2017 decreased by 0.20% over April, 2017. It increased by 5.18% over the corresponding month of the last year. YoY and MoM movements, from April, 2016 to May, 2017 are also graphed below in Figure 4.

Table 4 : Wholesale Price Index by Group of Commodities (Base 2007-08)

No.	Group	Group Weight (%)	Indices			% Change May, 2017 over		Impact (in %age points) May, 2017 over	
			May 2017	April 2017	May 2016	April 2017	May 2016	April 2017	May 2016
	General	100.00	218.78	219.22	208.01	-0.20	5.18	-0.20	5.17
1.	Agriculture, Forestry & Fishery Products	25.77	252.57	254.52	233.26	-0.77	8.28	-0.23	2.39
2.	Ores & Minerals, Electricity, Gas & Water	12.04	241.85	242.28	244.11	-0.18	-0.93	-0.02	-0.13
3.	Food Products, Beverages & Tobacco, Textiles, Apparel & Leather Products	31.11	227.51	227.31	215.79	0.09	5.43	0.03	1.75
	i. Food Products, Bev. & Tobacco	20.07	238.64	238.72	229.26	-0.03	4.09	-0.01	0.90
	ii. Textiles and Apparel	10.33	207.80	207.05	190.78	0.36	8.92	0.04	0.85
	iii. Leather Products	0.71	199.75	199.75	198.83	0.00	0.46	0.00	0.00
4.	Other Transportable Goods except Metal Products, Machinery & Equipment	22.37	171.76	171.61	162.49	0.09	5.70	0.02	1.00
5.	Metal Products, Machinery & Equipment	8.72	176.43	176.25	172.56	0.10	2.24	0.01	0.16

Main contributors to month-on-month and year-on-year percentage changes are given below and detail is given in Annexure B.

1. **Month-on-month** Top few commodities which varied from previous month i.e. April, 2017 are given below:-

Increased: Potatoes (18.35%), Ice cream (6.55%), Fresh Fruits (5.58%), Salt & Pure sodium chloride (5.12%), Eggs (5.05%), Other Cereal Flour (4.11%), Unmanufactured Tobacco (4.00%), Coffee & Tea (3.10%), Rice (2.06%), Woven Fabrics (1.79%), Dried Fruits & Nuts (1.60%), Furnace Oil (1.34%), Silk & Reyon Fabrics (1.25%), Other Fabrics (1.23%), Chemicals (1.18%), Pulses (1.17%) and Cotton Seeds (1.04%).

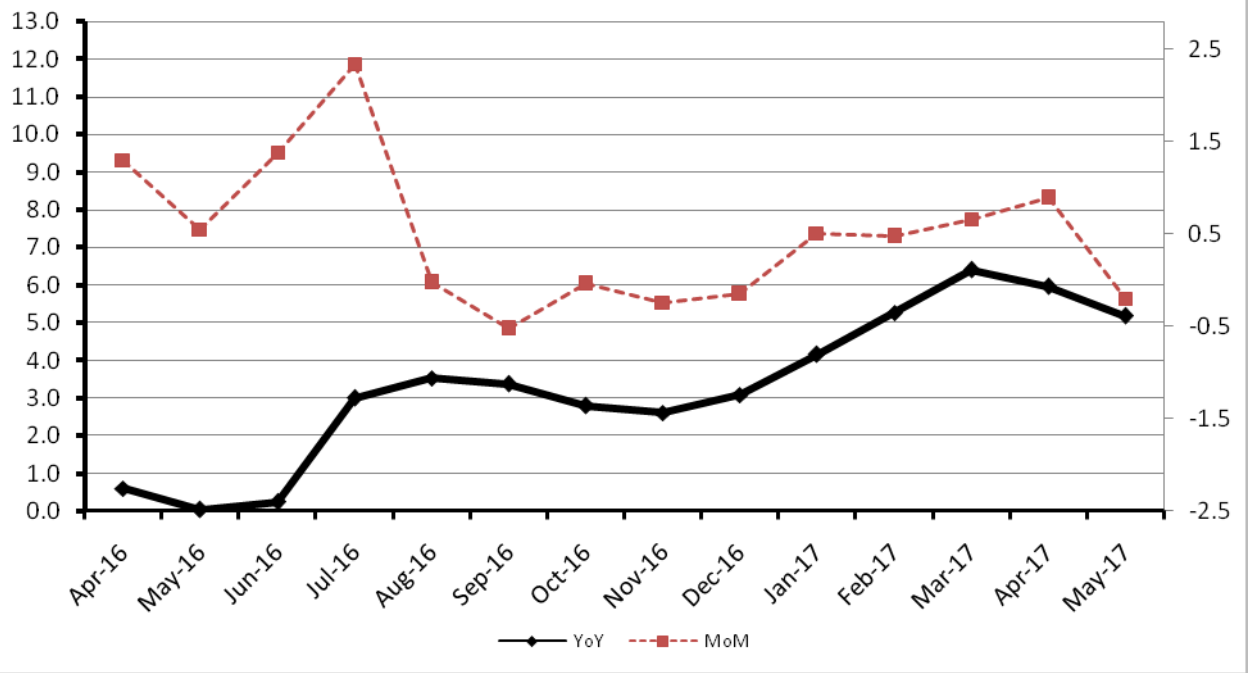
Decreased: Vegetables (20.88%), Jowar (11.07%), Poultry (8.22%), Bajra (5.12%), Printing Paper (4.56%), Wheat (4.05%), Sugar (3.30%), Wheat Flour (1.87%), Stimulant & Spice Crops (1.52%) and Maize (1.22%).

2. **Year-on-year** Top few commodities which varied from previous year i.e. May, 2016 are given below:-

Increased: Potatoes (108.26%), Furnace Oil (59.75%), Glass Sheets (29.26%), Other Glass Articles (24.72%), Unmanufactured Tobacco (24.61%), Vegetables (21.17%), Fiber Crops (19.47%), Eggs (18.52%), Cotton Yarn (15.90%), Lathe Machines (15.44%), Motor Spirit (15.15%), Diesel (15.12%) and Rice (14.96%).

Decreased: Hides & Fur Skins (29.89%), Jowar (26.13%), Bajra (17.06%), Fertilizers (14.60%), Cultivators (13.24%), Sugar (11.50%), Other Cereal Flour (8.19%), Stimulant & Spice Crops (7.78%), Maize (7.44%) and Poultry (7.06%).

Figure 4: WPI Inflation



Annexure A:CPI by Commodity Groups and Commodities (2007-08=100)

Item and Specification	Weight	Index Numbers			% Change in May 2017 over			
		May 2017	Apr 2017	May 2016	Apr 2017	May 2016		
<u>General</u>	100.0000	216.33	216.30	205.99	+	0.01	+	5.02
<u>Food and non-alcoholic Beverages</u>	34.8343	229.65	230.25	219.65	-	0.26	+	4.55
1 Wheat	0.3477	192.57	203.46	190.74	-	5.35	+	0.96
2 Wheat Flour	4.1648	208.05	211.07	208.56	-	1.43	-	0.24
3 Wheat Product	0.0959	216.02	216.66	213.99	-	0.30	+	0.95
4 Besan	0.1500	297.62	296.79	297.68	+	0.28	-	0.02
5 Rice	1.5821	177.72	174.21	154.07	+	2.01	+	15.35
6 Cereals	0.1563	255.14	254.41	248.06	+	0.29	+	2.85
7 Bakery & Confectionary	1.1550	217.90	217.62	212.69	+	0.13	+	2.45
8 Nimco	0.4574	254.27	253.75	245.24	+	0.20	+	3.68
9 Meat	2.4303	274.72	271.99	261.05	+	1.00	+	5.24
10 Chicken	1.3596	192.12	208.20	207.46	-	7.72	-	7.39
11 Fish	0.2970	216.86	217.64	218.98	-	0.36	-	0.97
12 Milk Fresh	6.6800	273.61	271.51	261.88	+	0.77	+	4.48
13 Milk Products	0.6338	261.79	260.42	253.26	+	0.53	+	3.37
14 Milk Powder	0.1129	234.48	234.56	235.69	-	0.03	-	0.51
15 Eggs	0.4555	178.26	179.91	150.91	-	0.92	+	18.12
16 Mustard Oil	0.0952	159.76	157.82	153.93	+	1.23	+	3.79
17 Cooking Oil	1.7538	137.86	137.69	132.88	+	0.12	+	3.75
18 Vegetable Ghee	2.0714	142.61	143.12	137.59	-	0.36	+	3.65
19 Dry Fruits	0.2543	266.15	266.78	263.17	-	0.24	+	1.13
20 Fresh Fruits	1.8649	303.71	275.79	260.15	+	10.12	+	16.74
21 Pulse Masoor	0.2712	181.21	181.99	211.25	-	0.43	-	14.22
22 Pulse Moong	0.2336	245.68	244.75	299.54	+	0.38	-	17.98
23 Pulse Mash (Washed)	0.2098	283.17	279.70	374.98	+	1.24	-	24.48
24 Pulse Gram	0.2361	294.91	288.13	311.49	+	2.35	-	5.32
25 Gram Whole	0.1616	288.70	283.71	258.79	+	1.76	+	11.56
26 Beans	0.0269	234.22	231.55	234.91	+	1.15	-	0.29
27 Potatoes	0.4774	231.71	193.29	136.23	+	19.88	+	<u>70.09</u>
28 Onion	0.5415	178.05	199.32	196.92	-	10.67	-	9.58
29 Tomatoes	0.4494	120.81	201.46	75.85	-	40.03	+	<u>59.27</u>
30 Fresh Vegetables	1.6577	248.13	272.52	216.09	-	8.95	+	14.83
31 Sugar	1.0445	211.63	216.60	227.12	-	2.29	-	6.82
32 Gur	0.0220	258.77	258.74	271.20	+	0.01	-	4.58
33 Honey	0.0446	331.39	331.39	307.78	+	0.00	+	7.67
34 SweetMeat	0.2483	250.10	247.92	241.33	+	0.88	+	3.63
35 Beverages	1.1990	224.56	220.59	219.07	+	1.80	+	2.51
36 Jam, Tomato Ketchup & Pickles	0.2454	217.79	217.10	214.28	+	0.32	+	1.64
37 Condiments	0.2656	269.19	267.70	262.65	+	0.56	+	2.49
38 Spices	0.5441	236.86	236.82	240.26	+	0.02	-	1.42
39 Tea	0.8377	289.90	286.87	256.86	+	1.06	+	12.86
<u>Alcoholic Beverages, Tobacco</u>	1.4135	383.32	382.78	346.08	+	0.14	+	10.76
40 Cigarettes	1.3906	385.57	385.02	347.85	+	0.14	+	10.84
41 Betel Leaves & Nuts	0.0229	246.77	246.79	238.78	-	0.01	+	3.35
<u>Clothing and footwear</u>	7.5708	236.71	235.61	228.31	+	0.47	+	3.68
42 Cotton Cloth	1.7286	230.16	228.50	223.74	+	0.73	+	2.87
43 Woolen Cloth	0.8759	256.11	255.67	243.69	+	0.17	+	5.10
44 Readymade Garments	0.9739	244.95	243.07	235.32	+	0.77	+	4.09
45 Woolen Readymade Garments	0.3964	258.38	258.64	253.20	-	0.10	+	2.05
46 Hosiery	0.5094	246.87	246.51	240.43	+	0.15	+	2.68
47 Dopatta	0.4412	244.48	244.46	239.65	+	0.01	+	2.02
48 Cleaning and Laundry	0.2110	269.30	265.87	253.01	+	1.29	+	6.44
49 Tailoring	0.8840	316.04	313.43	293.42	+	0.83	+	7.71
50 Footwear	1.5504	167.13	167.05	166.23	+	0.05	+	0.54

Annexure A:CPI by Commodity Groups and Commodities (2007-08=100)

Item and Specification	Weight	Index Numbers			% Change in May 2017 over	
		May 2017	Apr 2017	May 2016	Apr 2017	May 2016
<u>Housing, water, Elec., Gas and other fuels</u>	29.4149	196.70	196.62	187.12	+ 0.04	+ 5.12
51 House Rent	21.8149	188.68	188.68	176.44	+ 0.00	+ 6.94
52 Construction Input Items	0.5623	250.49	250.55	243.86	- 0.02	+ 2.72
53 Construction Wage Rates	0.3331	240.32	237.79	226.72	+ 1.06	+ 6.00
54 Water Supply	0.4971	171.58	168.16	161.10	+ 2.03	+ 6.51
55 Electricity	4.3985	238.10	238.10	238.10	+ 0.00	+ 0.00
56 Gas	1.5756	158.08	158.08	158.08	+ 0.00	+ 0.00
57 Kerosene Oil	0.0057	198.42	199.32	195.28	- 0.45	+ 1.61
58 Firewood Whole	0.2277	290.23	290.56	284.79	- 0.11	+ 1.91
<u>Furnishing and household equipment maintenance</u>	4.2082	226.42	224.95	220.71	+ 0.65	+ 2.59
59 Furniture	0.3315	217.87	217.24	211.36	+ 0.29	+ 3.08
60 Household Textiles	0.6489	227.19	226.57	220.62	+ 0.27	+ 2.98
61 Household Equipment	0.5936	182.03	180.69	178.29	+ 0.74	+ 2.10
62 Utensils	0.3212	231.84	230.57	223.50	+ 0.55	+ 3.73
63 Plastic Products	0.2547	210.84	210.32	206.97	+ 0.25	+ 1.87
64 Washing Soaps & Detergents	0.7893	231.44	231.03	226.67	+ 0.18	+ 2.10
65 Sewing Needle & Dr Cell	0.1496	206.48	206.22	208.58	+ 0.13	- 1.01
66 Household Servant	1.0432	253.47	249.98	246.18	+ 1.40	+ 2.96
67 Marriage Hall Charges	0.0762	248.67	245.66	240.06	+ 1.23	+ 3.59
<u>Health</u>	2.1868	212.65	212.43	187.43	+ 0.10	+ 13.46
68 Drugs & Medicines	1.2667	184.67	184.57	153.11	+ 0.05	+ 20.61
69 Medical Equipments	0.0080	251.21	251.01	233.19	+ 0.08	+ 7.73
70 Doctor (MBBS) Clinic Fee	0.5904	280.95	280.95	260.45	+ 0.00	+ 7.87
71 Medical Tests	0.3217	196.52	195.45	187.44	+ 0.55	+ 4.84
<u>Transport</u>	7.2023	176.43	176.33	169.31	+ 0.06	+ 4.21
72 Motor Vehicles	0.6630	175.12	173.26	165.23	+ 1.07	+ 5.99
73 Motor Vehicle Accessories	0.2439	211.92	212.27	215.24	- 0.16	- 1.54
74 Motor Fuel	3.0269	149.18	149.40	135.44	- 0.15	+ 10.14
75 Mechanical Service	0.4552	230.37	230.12	224.39	+ 0.11	+ 2.67
76 Motor Vehicle Tax	0.1099	210.18	210.18	210.18	+ 0.00	+ 0.00
77 Transport Services	2.7034	193.59	193.56	193.15	+ 0.02	+ 0.23
<u>Communication</u>	3.2198	132.87	132.87	130.77	+ 0.00	+ 1.61
78 Postal Services	0.0662	249.29	249.16	239.10	+ 0.05	+ 4.26
79 Communication & Apparatus	3.1536	130.42	130.43	128.49	- 0.01	+ 1.50
<u>Recreation and culture</u>	2.0227	196.12	196.02	195.79	+ 0.05	+ 0.17
80 Recreation & Culture	0.8634	129.73	129.72	129.15	+ 0.01	+ 0.45
81 Text Books	0.5706	287.98	287.98	292.41	+ 0.00	- 1.51
82 Newspapers	0.1934	181.01	181.01	175.49	+ 0.00	+ 3.15
83 Stationery	0.3953	215.94	215.42	211.82	+ 0.24	+ 1.95
<u>Education</u>	3.9431	249.23	249.20	224.19	+ 0.01	+ 11.17
84 Education	3.9431	249.23	249.20	224.19	+ 0.01	+ 11.17
<u>Restaurants and hotels</u>	1.2286	277.29	275.88	263.16	+ 0.51	+ 5.37
85 Readymade Food	1.2286	277.29	275.88	263.16	+ 0.51	+ 5.37
<u>Misc. goods and services</u>	2.7550	245.99	244.71	233.52	+ 0.52	+ 5.34
86 Personal Care	1.4935	226.79	225.21	214.76	+ 0.70	+ 5.60
87 Cosmetics	0.3853	204.76	203.88	199.04	+ 0.43	+ 2.87
88 Blades	0.0322	197.80	195.78	195.16	+ 1.03	+ 1.35
89 Personal Equipments	0.8440	300.63	299.71	283.91	+ 0.31	+ 5.89

Annexure B: Wholesale Price Indices by Major Groups & Commodities (2007-08=100)

Item and Specification	Weight	Index Numbers			% Change in May 2017			
		May 17	Apr 17	May 16	Over			
					Apr 2017	May 2016		
General	100.0000	218.78	219.22	208.01	-	0.20	+	5.18
Agriculture Forestry & Fisher	25.7674	252.57	254.52	233.26	-	0.77	+	8.28
001 Wheat	0.6297	199.84	208.27	199.04	-	4.05	+	0.40
002 Maize	0.6764	193.75	196.14	209.33	-	1.22	-	7.44
003 Rice	2.4413	164.78	161.46	143.34	+	2.06	+	14.96
004 Sorghum / Jowar	0.0214	211.32	237.62	286.07	-	11.07	-	26.13
005 Millet / Bajra	0.0374	160.16	168.81	193.10	-	5.12	-	17.06
006 Vegetables	1.2441	244.61	309.16	201.87	-	20.88	+	21.17
007 Fresh Fruits	1.5144	319.44	302.55	282.91	+	5.58	+	12.91
008 Dry Fruits	0.2478	236.56	237.07	251.32	-	0.22	-	5.87
009 Cotton Seeds	1.1511	277.04	274.20	251.49	+	1.04	+	10.16
010 Other Oil Seeds	0.0722	181.57	182.29	165.14	-	0.39	+	9.95
011 Edible Roots / Potatoes	0.2540	232.84	196.74	111.80	+	18.35	+	<u>108.26</u>
012 Stimulant & Spice Crops	0.1634	208.56	211.77	226.16	-	1.52	-	7.78
013 Pulses	0.4901	269.80	266.68	280.91	+	1.17	-	3.96
014 Sugar Crops	1.0725	268.94	268.94	286.34	+	0.00	-	6.08
015 Fibre Crops	5.3169	218.63	219.01	183.00	-	0.17	+	19.47
016 Unmanufactured Tobacco	0.0742	290.42	279.24	233.06	+	4.00	+	24.61
017 Poultry	0.5633	205.02	223.38	220.59	-	8.22	-	7.06
018 Raw Milk from Bovine Animals	7.0279	268.56	268.56	258.97	+	0.00	+	3.70
019 Eggs	0.5034	178.14	169.58	150.30	+	5.05	+	18.52
020 Raw Animal Materials / Wool	0.0351	176.86	177.28	175.56	-	0.24	+	0.74
021 Hides & Fur Skins, Raw	0.4834	106.42	107.72	151.80	-	1.21	-	29.89
022 Fuel Wood in Logs	0.0179	279.63	279.63	264.77	+	0.00	+	5.61
023 Fish Live Fresh or Chilled	1.7295	466.43	467.04	423.43	-	0.13	+	10.16
Ores/Minerals, Elec., Gas & W	12.0389	241.85	242.28	244.11	-	0.18	-	0.93
024 Coal not Agglomerated	0.7508	155.29	155.29	160.78	+	0.00	-	3.41
025 Natural Gas Liquefied	5.7385	208.89	209.92	208.07	-	0.49	+	0.39
026 Salt & Pure Sodium Chloride	0.0584	254.38	242.00	252.31	+	5.12	+	0.82
027 Electrical Energy	5.4912	288.00	288.00	293.09	+	0.00	-	1.74
Food, Beverages, Tobacco, Textil	31.1122	227.51	227.31	215.79	+	0.09	+	5.43
Food Products, Beverages &	20.0718	238.64	238.72	229.26	-	0.03	+	4.09
028 Meat of Animals	3.4559	288.83	287.03	271.73	+	0.63	+	6.29
029 Vegetables & Fruit Juice	0.0058	223.21	223.21	203.24	+	0.00	+	9.83
030 Dried Fruits & Nuts	0.1733	267.71	263.49	242.58	+	1.60	+	10.36
031 Fruit Juices	0.3880	181.68	180.42	179.74	+	0.70	+	1.08
032 Vegetable Oils Refined	1.9242	154.94	155.05	151.60	-	0.07	+	2.20
033 Vegetable Ghee	1.5632	126.11	126.45	122.60	-	0.27	+	2.86
034 Oil Cakes	0.9611	227.54	229.75	226.23	-	0.96	+	0.58
035 Processed Liquid Milk	4.4437	264.31	262.24	248.90	+	0.79	+	6.19
036 Milk & Cream in Solid Form	0.0316	218.36	218.15	218.99	+	0.10	-	0.29
037 Ice Cream	0.0047	261.28	245.21	231.30	+	6.55	+	12.96
038 Dairy Products N.E.C	0.0117	255.13	254.71	248.01	+	0.16	+	2.87
039 Wheat Flour	2.3034	191.32	194.97	192.67	-	1.87	-	0.70
040 Other Cereal Flour	0.0604	252.55	242.58	275.08	+	4.11	-	8.19
041 Sugar Refined	1.7975	214.13	221.44	241.96	-	3.30	-	11.50
042 Chocolate	0.0139	100.00	100.00	101.06	+	0.00	-	1.05
043 Sugar Confectionary	0.0738	128.44	128.44	118.83	+	0.00	+	8.09
044 Coffee & Tea	0.7303	264.11	256.18	232.09	+	3.10	+	13.80
045 Spices	0.1449	189.72	190.30	189.79	-	0.30	-	0.04
046 Other Food Products	0.0336	294.51	293.85	292.52	+	0.22	+	0.68
047 Mineral Water	0.0207	198.57	198.57	194.37	+	0.00	+	2.16
048 Beverages	0.6303	172.03	172.33	172.44	-	0.17	-	0.24
049 Tobacco Products	1.2998	445.85	445.85	390.01	+	0.00	+	14.32
Textiles & Apparels	10.3289	207.80	207.05	190.78	+	0.36	+	8.92
050 Cotton Yarn	5.2491	203.16	203.06	175.29	+	0.05	+	15.90
051 Nylon Yarn	0.1719	143.99	143.99	147.08	+	0.00	-	2.10
052 Blended Yarn	0.1689	182.28	182.78	176.75	-	0.27	+	3.13
053 Woven Fabrics	0.0128	316.28	310.72	279.42	+	1.79	+	13.19
054 Cotton Fabrics	0.6343	211.60	209.95	208.84	+	0.79	+	1.32
055 Other Fabrics	1.1016	227.16	224.40	222.36	+	1.23	+	2.16
056 Silk & Reyon Fabrics	0.7350	188.89	186.55	190.96	+	1.25	-	1.08

Annexure B: Wholesale Price Indices by Major Groups & Commodities

(2007-08=100)

Item and Specification	Weight	Index Numbers			% Change in May 2017			
		May 17	Apr 17	May 16	Over			
					Apr 2017	May 2016		
057 Towels	0.1235	276.14	276.14	267.20	+	0.00	+	3.35
058 Blankets	0.0029	247.52	247.52	243.93	+	0.00	+	1.47
059 Bed Sheets	0.0913	256.87	256.07	256.29	+	0.31	+	0.23
060 Quilts	0.0019	203.79	203.79	198.00	+	0.00	+	2.92
061 Woolen Carpets	0.0383	196.43	196.43	181.55	+	0.00	+	8.20
062 Synthetic Carpets	0.0566	130.95	130.95	129.25	+	0.00	+	1.32
063 Hosiery Products	0.8832	243.31	241.83	222.52	+	0.61	+	9.34
064 Readymade Garments	1.0576	197.19	197.19	194.45	+	0.00	+	1.41
Leather Products	0.7115	199.75	199.75	198.83	+	0.00	+	0.46
065 Leather Without Hair	0.2973	221.97	221.97	221.97	+	0.00	+	0.00
066 Other Leather N.E.C	0.2567	207.31	207.31	207.31	+	0.00	+	0.00
067 Footwear	0.1575	145.51	145.51	141.36	+	0.00	+	2.94
Other Transportable Goods	22.3659	171.76	171.61	162.49	+	0.09	+	5.70
068 Timber	0.0165	231.53	231.53	220.36	+	0.00	+	5.07
069 Printing Paper	0.4279	165.63	173.54	161.82	-	4.56	+	2.35
070 Hard Board	0.1579	220.83	220.83	197.92	+	0.00	+	11.58
071 Coke	0.2797	163.45	163.45	163.45	+	0.00	+	0.00
072 Motor Spirit	1.5336	124.98	124.98	108.54	+	0.00	+	15.15
073 Diesel Oil	5.2664	156.91	156.91	136.30	+	0.00	+	15.12
074 Kerosene Oil	0.2151	117.12	117.12	115.11	+	0.00	+	1.75
075 Furnace Oil	3.2664	99.91	98.59	62.54	+	1.34	+	<u>59.75</u>
076 Mobil Oil	0.7114	201.29	200.49	196.00	+	0.40	+	2.70
077 Chemicals	1.7720	173.01	170.99	178.78	+	1.18	-	3.23
078 Dyeing Material	0.1539	146.55	146.55	146.55	+	0.00	+	0.00
079 Fertilizers	2.8657	218.85	218.31	256.25	+	0.25	-	14.60
080 Pesticides	0.2763	304.43	304.43	312.37	+	0.00	-	2.54
081 Insecticides	0.1276	141.71	142.02	134.92	-	0.22	+	5.03
082 Paints & Varnishes	0.1916	294.51	294.51	295.36	+	0.00	-	0.29
083 Medicines	1.1428	174.00	174.00	161.67	+	0.00	+	7.63
084 Soaps & Detergents	0.8168	191.14	191.21	183.12	-	0.04	+	4.38
085 Auto Tyres	0.2703	177.07	177.07	181.25	+	0.00	-	2.31
086 Plastic Products	0.4550	225.88	225.88	227.58	+	0.00	-	0.75
087 Glass sheets	0.2089	298.97	298.97	231.30	+	0.00	+	29.26
088 Other Glass Articles	0.1635	317.24	317.24	254.36	+	0.00	+	24.72
089 Ceramics & Sanitary Fixture	0.0244	233.92	233.92	230.06	+	0.00	+	1.68
090 Bricks, Blocks & Tiles	0.1566	220.73	220.73	220.40	+	0.00	+	0.15
091 Cement	1.8145	214.78	216.55	205.35	-	0.82	+	4.59
092 Bed Foam	0.0006	170.00	170.00	167.67	+	0.00	+	1.39
093 Matches	0.0505	171.36	171.36	162.62	+	0.00	+	5.37
Metal Product, Machinery & Eq	8.7156	176.43	176.25	172.56	+	0.10	+	2.24
094 Pig Iron	0.0593	128.97	128.97	128.97	+	0.00	+	0.00
095 Steel Bar & Sheets	1.4022	135.13	134.87	127.17	+	0.19	+	6.26
096 Pipe Fittings	0.0780	215.66	215.29	193.63	+	0.17	+	11.38
097 Steel Products	0.3879	177.56	177.56	176.99	+	0.00	+	0.32
098 Engines & Motors	0.0046	116.98	116.98	109.24	+	0.00	+	7.09
099 Vacuum Pumps	0.0155	123.69	123.69	114.95	+	0.00	+	7.60
100 Air Conditioners	0.0049	200.10	200.10	201.18	+	0.00	-	0.54
101 Cultivators	0.0551	190.66	190.66	219.76	+	0.00	-	13.24
102 Chuff Cutter	0.1293	153.46	153.46	149.20	+	0.00	+	2.86
103 Tractors	0.0028	201.75	201.75	205.43	+	0.00	-	1.79
104 Lathe Machines	0.0525	241.06	241.06	208.81	+	0.00	+	15.44
105 Concrete Mixture	0.0107	138.83	138.83	138.83	+	0.00	+	0.00
106 Fridge, WashM, SewM, Fans, Iron	1.1645	214.75	213.78	201.77	+	0.45	+	6.43
107 Electric Wires	0.0912	204.51	204.51	195.19	+	0.00	+	4.77
108 Lighting Equipments	1.4431	170.73	170.73	169.52	+	0.00	+	0.71
109 Radio & Television	0.1843	140.42	140.42	129.97	+	0.00	+	8.04
110 Motor Vehicles	0.0244	191.39	191.39	185.25	+	0.00	+	3.31
111 Motorcycles	0.2570	125.89	125.89	125.89	+	0.00	+	0.00
112 Bicycles	3.3483	187.65	187.65	187.65	+	0.00	+	0.00