



Monthly Review on Price Indices



June, 2017
(Base 2007-08)

Government of Pakistan
Statistics Division
Pakistan Bureau of Statistics
Islamabad

Inflation in Brief

1. CPI inflation General increased by 3.9% on year-on-year basis in June 2017 as compared to an increase of 5.0% in the previous month and 3.2% in June 2016. On month-on-month basis, it decreased by 0.4% in June 2017 as compared to an increase of 0.0% in the previous month and a increase of 0.6% in June 2016.
2. Core inflation measured by non-food non-energy CPI (Core NFNE) increased by 5.5% on (YoY) basis in June 2017 as compared to increase of 5.5% in the previous month and 4.6% in June 2016. On (MoM) basis, it increased by 0.1% in June 2017 as compared to increase of 0.2% in previous month, and an increase of 0.1% in corresponding month of last year i.e. June 2016.
3. Core inflation, measured by 20% weighted trimmed mean CPI (Core Trimmed) increased by 4.2% on (YoY) basis in June 2017 as compared to 4.8% in the previous month and by 3.7% in June 2016. On (MoM) basis, it increased by 0.0% in June 2017 as compared to an increase of 0.2% in the previous month and an increase of 0.2% in corresponding month of last year i.e. June 2016.
4. SPI inflation on YoY increased by 1.4% in June 2017 as compared to an increase of 2.4% a month earlier and an increase of 0.7% in June 2016. On MoM basis, it increased by 0.1% in June 2017 as compared to a decrease of 0.9% a month earlier and an increase of 1.1% in June 2016.
5. WPI inflation on YoY basis increased by 3.3% in June 2017 as compared to an increase of 5.2% a month earlier and an increase of 0.2% in June 2016. WPI inflation on MoM basis decreased by 0.5% in June 2017 as compared to a decrease of 0.2% a month earlier and an increase of 1.4% in corresponding month of last year i.e. June 2016.
6. Figures 1 and 2 show graphically the data of Table 1. Table 1.1 shows "Period Average" and "YoY" percent changes in indices of three years.

Table 1: Inflation (%) (Base 2007-08)

Period	CPI						Core Inflation				SPI**		WPI	
	General		Food		Non-food		NFNE*		Trimmed		YoY	MoM	YoY	MoM
	YoY	MoM	YoY	MoM	YoY	MoM	YoY	MoM	YoY	MoM				
May-16	3.2	-0.2	2.1	-0.7	3.9	0.2	4.6	0.2	3.6	0.2	0.6	-1.0	0.0	0.6
Jun-16	3.2	0.6	2.3	1.4	3.8	0.1	4.6	0.1	3.7	0.2	0.7	1.1	0.2	1.4
Jul-16	4.1	1.3	4.7	2.5	3.7	0.5	4.5	0.6	3.6	0.5	1.7	1.3	3.0	2.3
Aug-16	3.6	-0.3	3.4	-0.9	3.7	0.2	4.6	0.2	3.5	0.1	2.2	0.2	3.5	0.0
Sep-16	3.9	0.2	4.0	0.1	3.8	0.2	4.8	0.3	3.7	0.1	1.8	0.1	3.4	-0.5
Oct-16	4.2	0.8	4.4	0.8	4.1	0.8	5.2	0.9	3.8	0.6	1.3	0.7	2.8	0.0
Nov-16	3.8	0.2	3.3	0.2	4.1	0.2	5.3	0.2	3.8	0.2	0.6	0.3	2.6	-0.2
Dec-16	3.7	-0.7	3.0	-1.9	4.2	0.2	5.2	0.1	3.7	0.1	0.5	-0.8	3.1	-0.1
Jan-17	3.7	0.2	2.6	-1.0	4.4	1.0	5.4	1.1	3.8	0.6	0.4	-0.8	4.2	0.5
Feb-17	4.2	0.3	3.7	0.3	4.6	0.3	5.3	0.2	4.1	0.2	1.1	0.2	5.3	0.5
Mar-17	4.9	0.8	5.0	1.9	4.9	0.1	5.3	0.1	4.5	0.2	3.1	1.8	6.4	0.7
Apr-17	4.8	1.4	4.4	1.7	5.1	1.2	5.5	1.3	4.8	0.8	2.3	-0.9	6.0	0.9
May-17	5.0	0.0	4.9	-0.2	5.1	0.2	5.5	0.2	4.8	0.2	2.4	-0.9	5.2	-0.2
Jun-17	3.9	-0.4	2.4	-1.1	5.0	0.1	5.5	0.1	4.2	0.0	1.4	0.1	3.3	-0.5

*NFNE is non-food non-energy, ** SPI for quintile 1. Digits 0.0* are due to rounding off.

Table 1.1 : Period Average and YoY % Changes of Indices (Base 2007-08)

Index	Averages July-June % Changes			June over June % Changes		
	2016-17	2015-16	2014-15	2017	2016	2015
CPI	4.16	2.86	4.53	3.93	3.19	3.16
SPI	1.57	1.31	1.74	1.38	0.74	1.12
WPI	4.04	-1.05	-0.30	3.27	0.24	-1.97

Figure 2: CPI Inflation MoM, Special Indices

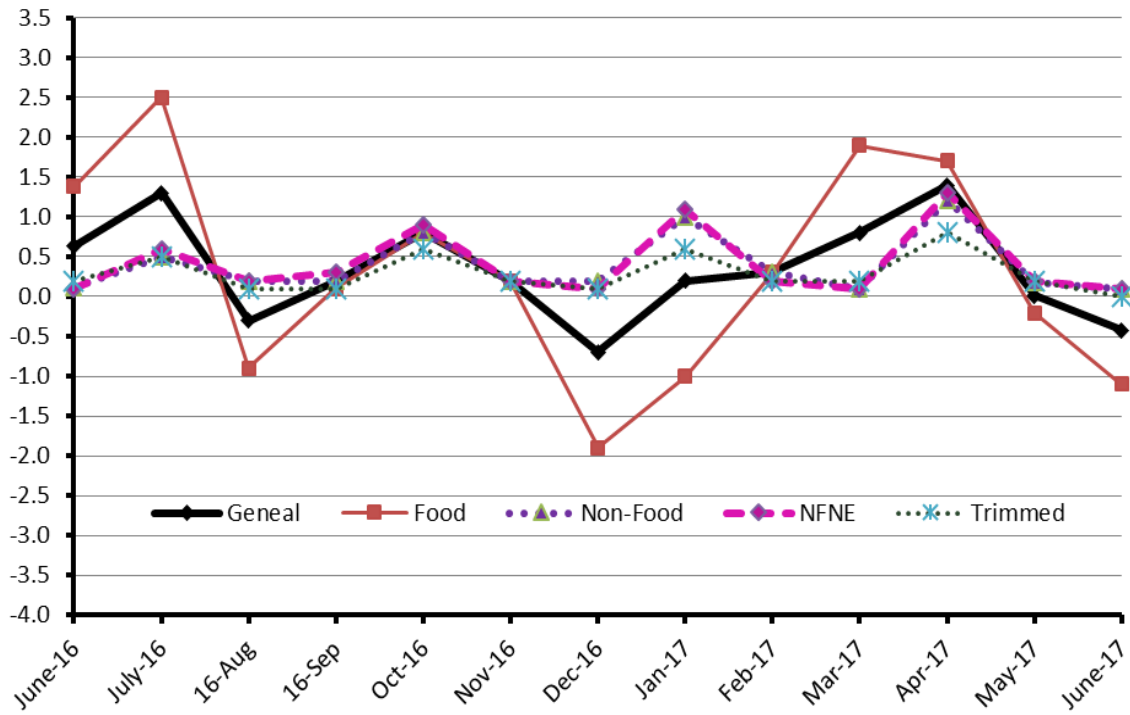
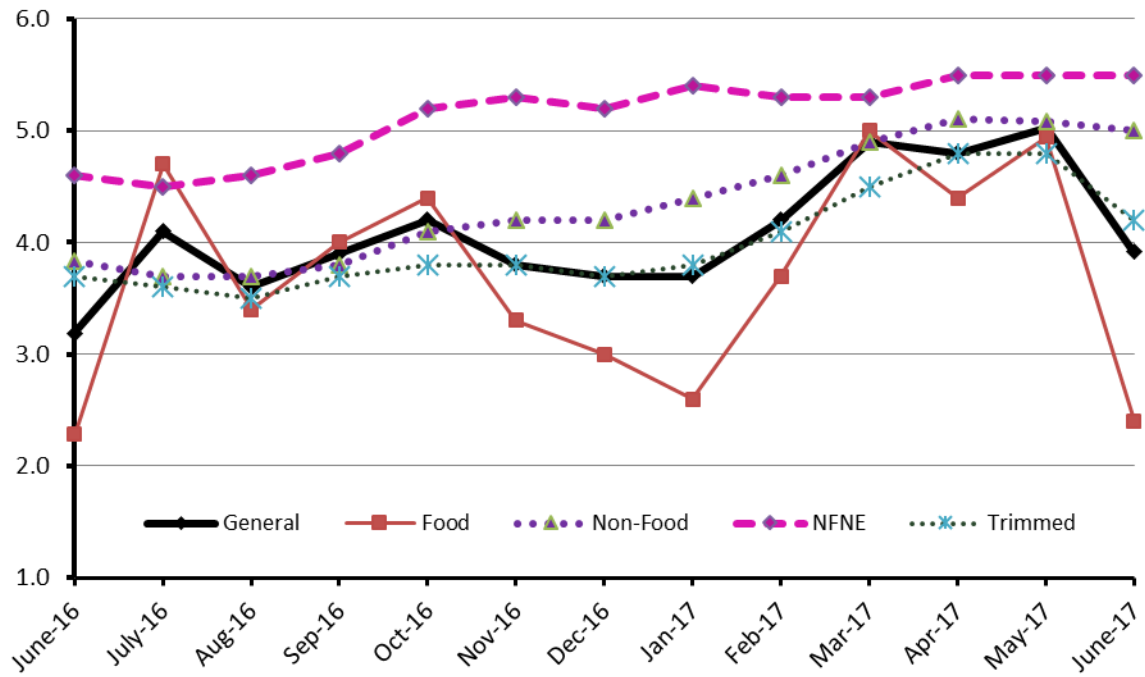


Figure 1: CPI Inflation YoY, Special Indices



II. Consumer Price Index (CPI)

The Consumer Price Index of June 2017, has decreased by 0.41% over May 2017 and increased by 3.93% over corresponding month of the last year i.e. June 2016.

Table 2 : Consumer Price Index by Group of Commodities and Services (Base 2007-08)

No	Group	Group Weight (%)	Indices			% Change June 2017 Over		Impact (In % points) June 2017 Over	
			June 2017	May 2017	June 2016	May 2017	June 2016	May 2017	June 2016
	General	100.00	215.45	216.33	207.30	-0.41	3.93	-0.41	3.93
1.	Food & Non-alcoholic Bev.	34.83	229.18	229.65	222.39	-0.20	3.05	-0.08	1.14
	Non-perishable Food Items	29.84	226.09	226.53	221.66	-0.19	2.00	-0.06	0.64
	Perishable Food Items	4.99	247.64	248.26	226.76	-0.25	9.21	-0.01	0.50
2.	Alcoholic Bev.& Tobacco	1.41	324.60	383.32	360.75	-15.32	-10.02	-0.38	-0.25
3.	Clothing & Footwear	7.57	237.99	236.71	229.34	0.54	3.77	0.04	0.32
4.	Housing, Water, Electricity, Gas & Fuels	29.41	196.71	196.70	187.17	0.01	5.10	0.00	1.35
5.	Furnishing & Household Equipment Maintenance	4.21	226.80	226.42	221.48	0.17	2.40	0.01	0.11
6.	Health	2.19	212.66	212.65	187.68	0.00	13.31	0.00	0.26
7.	Transport	7.20	175.87	176.43	169.34	-0.32	3.86	-0.02	0.23
8.	Communication	3.22	132.91	132.87	130.85	0.03	1.57	0.00	0.03
9.	Recreation & Culture	2.02	196.15	196.12	195.70	0.02	0.23	0.00	0.00
10.	Education	3.94	249.26	249.23	224.60	0.01	10.98	0.00	0.47
11.	Restaurants & Hotels	1.23	277.76	277.29	263.41	0.17	5.45	0.00	0.09
12.	Miscellaneous	2.76	246.71	245.99	233.42	0.29	5.69	0.01	0.18

Main contributors to month-on-month and year-on-year percentage changes are given below and detail is given in Annexure A.

1. Month-on-month Top few commodities which varied from previous month are given below:-

Food Items Increased: Tomatoes (9.4%), Potatoes (8.25%), Eggs (4.46%), Meat (1.24%), Beverages (1.15%) and Betel leaves & Nuts (1.13%).

Decreased: Cigarettes (15.49%), Onion (7.17%), Chicken (5.03%), Besan (4.02%), sugar (3.37%) Fresh vegetables (3.18%), Pulse Gram (1.62%) and Pulse Gram (1.35%).

Non-food Items Increased: Tailoring (1.86%) and Kerosene Oil (1.1%).

Decreased: Motor Fuel (1.01%).

2. Year-on-Year: Top few commodities which varied from previous year i.e. May2016 are given below:-

Food Items Increased: Potatoes (26.54%), Fresh fruits (14.17%), Rice (13.95%), Eggs (13.72%), Tea (13.51%), Tomatoes (8.16%), Honey (7.67%) and Meat (6.22%).

Decreased: Pulse Mash (24.83%), Pulse Moong (18.78%), Pulse Masoor (16.08%), Onion (14.15%), Sugar (11.01%), Cigarettes (10.17%), Pulse Gram (8.86%) and Besan (6.28%).

Non-food Items Increased: Drugs & Medicines (20.33%), Education (10.98%), Motor Fuel (8.92%), Tailoring (8.56%), Doctor (MBBS) Clinic Fee (7.87%), Medical Equipments (7.56%), House Rent (6.94%), Personal Equipments (6.75%), Cleaning and Laundry (6.67%), Motor Vehicle (6.44%) and Water Supply (6.18%).

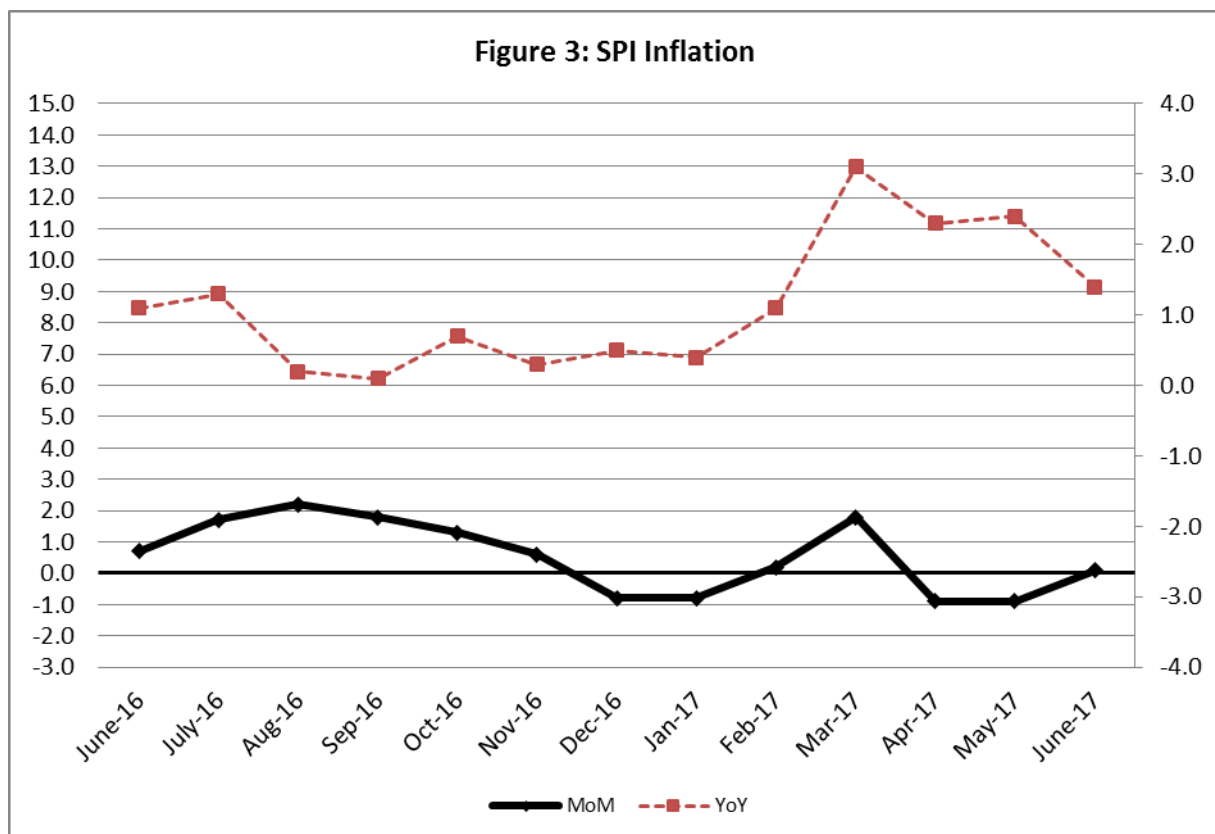
Decreased: Motor Vehicle Accessories (1.08%).

III. Sensitive Price Indicator

Quintile-wise percentage changes YoY and MoM are given below in Table 3. The series from May 2016 to June 2017 is also graphed below in Figure 3.

Table 3: Sensitive Price Indicator (Base 2007-08)					
Quintiles	Indices			% Change June 2017 over	
	June 2017	May 2017	June 2016	May 2017	June 2016
1	209.71	209.42	206.86	0.14	1.38
2	217.96	217.49	214.41	0.22	1.66
3	219.50	219.03	215.75	0.21	1.74
4	224.70	224.41	220.46	0.13	1.92
5	222.37	222.49	217.63	-0.05	2.18
Combined	220.68	220.51	216.58	0.08	1.89

Table 3.1 : Weekly Percentage Change of SPI During June-17					
Quintiles	% Change with Previous week				
	1 st June-2017	8 th June -2017	15 th June -2017	22 nd June-2017	29 nd June-2017
Quantile 1	0.07	-0.19	-0.17	0.26	0.50
Combined	0.09	-0.25	-0.33	0.29	0.40



IV. Wholesale Price Index

The Wholesale Price Index for June, 2017 decreased by 0.46% over May, 2017. It increased by 3.27% over the corresponding month of the last year. YoY and MoM movements, from May, 2016 to June, 2017 are also graphed below in Figure 4.

Table 4 : Wholesale Price Index by Group of Commodities (Base 2007-08)									
No.	Group	Group Weight (%)	Indices			% Change June, 2017 over		Impact (in %age points) June, 2017 over	
			June 2017	May 2017	June 2016	May 2017	June 2016	May 2017	June 2016
	General	100.00	217.77	218.78	210.88	-0.46	3.27	-0.46	3.27
1.	Agriculture, Forestry & Fishery Products	25.77	255.41	252.57	239.12	1.12	6.81	0.33	1.99
2.	Ores & Minerals, Electricity, Gas & Water	12.04	241.61	241.85	244.28	-0.10	-1.09	-0.01	-0.15
3.	Food Products, Beverages & Tobacco, Textiles, Apparel & Leather Products	31.11	222.73	227.51	218.71	-2.10	1.84	-0.68	0.59
	i. Food Products, Bev. & Tobacco	20.07	230.93	238.64	233.44	-3.23	-1.08	-0.71	-0.24
	ii. Textiles and Apparel	10.33	208.37	207.80	191.44	0.27	8.84	0.03	0.83
	iii. Leather Products	0.71	199.75	199.75	199.07	0.00	0.34	0.00	0.00
4.	Other Transportable Goods except Metal Products, Machinery & Equipment	22.37	170.67	171.76	164.46	-0.63	3.78	-0.11	0.66
5.	Metal Products, Machinery & Equipment	8.72	176.73	176.43	172.48	0.17	2.46	0.01	0.18

Main contributors to month-on-month and year-on-year percentage changes are given below and detail is given in Annexure B.

1. **Month-on-month** Top few commodities which varied from previous month i.e. May, 2017 are given below:-

Increased: Potatoes (16.43%), Fresh Fruits (13.44%), Stimulant & Spice Crops (6.34%), Eggs (2.26%), Readymade Garments (2.12%), Motor Vehicles & Bajra (2.07%) each, Steel Bar & Sheets (1.32%) and Dairy Products (1.20%).

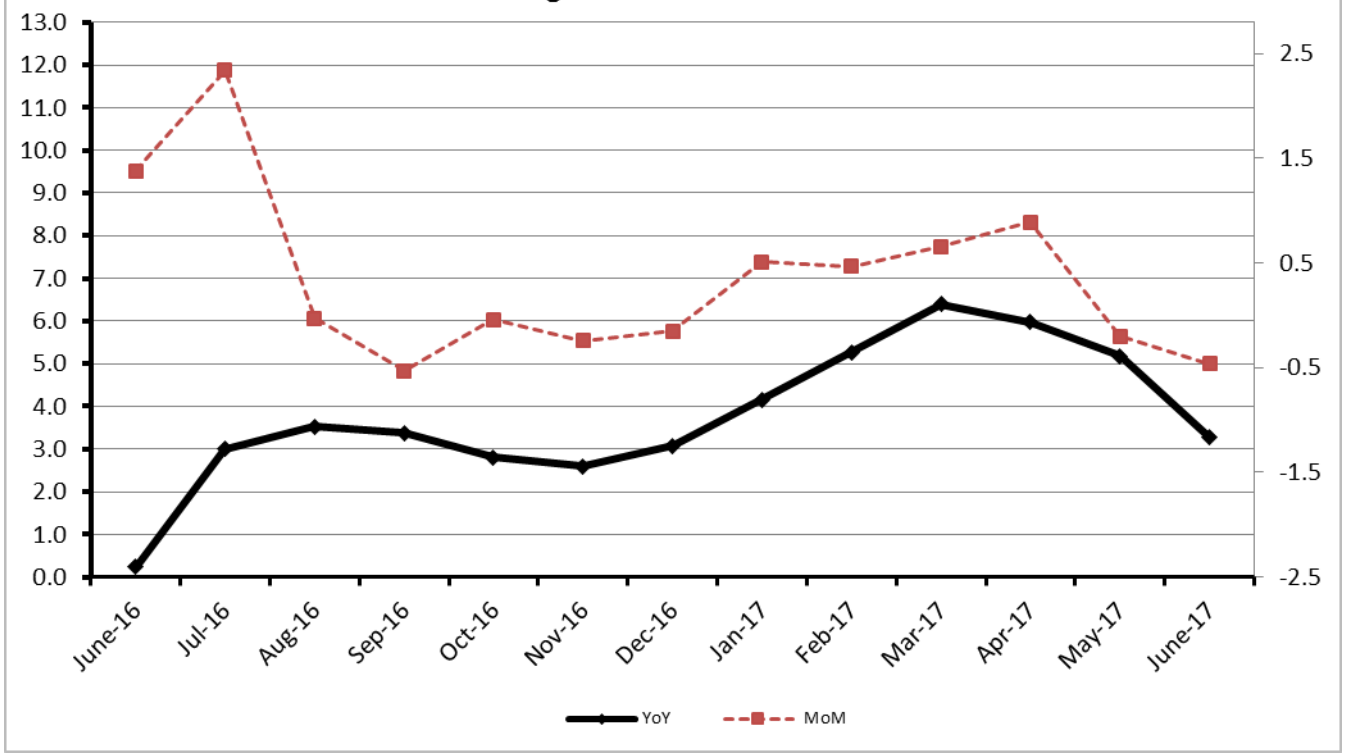
Decreased: Tobacco Products (28.59%), Poultry (6.11%), Salt & Pure Sodium Chloride (3.24%), Other Cereal Flour (2.12%), Sugar (1.91%), Motor Spirit (1.62%), Furnace Oil (1.59%), Diesel (1.17%), Pulses (1.15%) and Vegetables (1.14%).

2. **Year-on-year** Top few commodities which varied from previous year i.e. June, 2016 are given below:-

Increased: Potatoes (52.73%), Glass Sheets (29.26%), Furnace Oil (28.89%), Fiber Crops (21.48%), Unmanufactured Tobacco (19.48%), Fresh Fruits (18.77%), Cotton Yarn (15.92%), Lathe Machines (15.44%), Coffee & Tea (14.69%), Rice (13.83%), Diesel (13.78%), Motor Spirit (13.28%) and Woven Fabrics (13.08%),

Decreased: Hides & Fur Skins (29.27%), Tobacco Products (26.82%), Jowar (25.48%), Bajra (17.84%), Sugar (14.48%), Fertilizers (13.58%), Cultivators (13.24%), Other Cereal Flour (13.18%), Pulses (9.02%) and Sugar Cops (6.08%).

Figure 4: WPI Inflation



Annexure A:CPI by Commodity Groups and Commodities (2007-08=100)

Item and Specification	Weight	Index Numbers			% Change in June 2017 over			
		June 2017	May 2017	June 2016	May 2017	June 2016		
General	100.0000	215.45	216.33	207.30	-	0.41	+	3.93
Food and non-alcoholic Beverages	34.8343	229.18	229.65	222.39	-	0.20	+	3.05
1 Wheat	0.3477	192.58	192.57	190.65	+	0.01	+	1.01
2 Wheat Flour	4.1648	206.83	208.05	207.51	-	0.59	-	0.33
3 Wheat Product	0.0959	214.38	216.02	213.52	-	0.76	+	0.40
4 Besan	0.1500	285.65	297.62	304.78	-	4.02	-	6.28
5 Rice	1.5821	178.03	177.72	156.23	+	0.17	+	13.95
6 Cereals	0.1563	254.31	255.14	248.23	-	0.33	+	2.45
7 Bakery & Confectionary	1.1550	218.31	217.90	213.83	+	0.19	+	2.10
8 Nimco	0.4574	254.89	254.27	248.02	+	0.24	+	2.77
9 Meat	2.4303	278.12	274.72	261.83	+	1.24	+	6.22
10 Chicken	1.3596	182.45	192.12	193.47	-	5.03	-	5.70
11 Fish	0.2970	217.81	216.86	218.30	+	0.44	-	0.22
12 Milk Fresh	6.6800	273.62	273.61	263.49	+	0.00	+	3.84
13 Milk Products	0.6338	262.51	261.79	254.37	+	0.28	+	3.20
14 Milk Powder	0.1129	233.49	234.48	236.54	-	0.42	-	1.29
15 Eggs	0.4555	186.21	178.26	163.75	+	4.46	+	13.72
16 Mustard Oil	0.0952	159.86	159.76	153.99	+	0.06	+	3.81
17 Cooking Oil	1.7538	137.77	137.86	133.28	-	0.07	+	3.37
18 Vegetable Ghee	2.0714	142.61	142.61	137.43	+	0.00	+	3.77
19 Dry Fruits	0.2543	264.11	266.15	263.76	-	0.77	+	0.13
20 Fresh Fruits	1.8649	304.46	303.71	266.67	+	0.25	+	14.17
21 Pulse Masoor	0.2712	178.77	181.21	213.02	-	1.35	-	16.08
22 Pulse Moong	0.2336	243.58	245.68	299.89	-	0.85	-	18.78
23 Pulse Mash (Washed)	0.2098	282.75	283.17	376.13	-	0.15	-	24.83
24 Pulse Gram	0.2361	290.14	294.91	318.34	-	1.62	-	8.86
25 Gram Whole	0.1616	287.99	288.70	273.48	-	0.25	+	5.31
26 Beans	0.0269	235.22	234.22	234.45	+	0.43	+	0.33
27 Potatoes	0.4699	250.82	231.71	198.22	+	8.25	+	26.54
28 Onion	0.5340	165.29	178.05	192.54	-	7.17	-	14.15
29 Tomatoes	0.4419	132.17	120.81	122.20	+	9.40	+	8.16
30 Fresh Vegetables	1.6802	240.24	248.13	228.83	-	3.18	+	4.99
31 Sugar	1.0445	204.50	211.63	229.80	-	3.37	-	11.01
32 Gur	0.0220	261.06	258.77	274.05	+	0.88	-	4.74
33 Honey	0.0446	331.39	331.39	307.78	+	0.00	+	7.67
34 SweetMeat	0.2483	251.16	250.10	241.30	+	0.42	+	4.09
35 Beverages	1.1990	227.14	224.56	220.83	+	1.15	+	2.86
36 Jam, Tomato Ketchup & Pickles	0.2454	218.46	217.79	215.33	+	0.31	+	1.45
37 Condiments	0.2656	269.13	269.19	262.42	-	0.02	+	2.56
38 Spices	0.5441	236.29	236.86	241.18	-	0.24	-	2.03
39 Tea	0.8377	290.45	289.90	255.87	+	0.19	+	13.51
<u>Alcoholic Beverages, Tobacco</u>	1.4135	324.60	383.32	360.75	-	15.32	-	10.02
40 Cigarettes	1.3906	325.84	385.57	362.72	-	15.49	-	10.17
41 Betel Leaves & Nuts	0.0229	249.57	246.77	241.34	+	1.13	+	3.41
<u>Clothing and footwear</u>	7.5708	237.99	236.71	229.34	+	0.54	+	3.77
42 Cotton Cloth	1.7286	231.26	230.16	224.62	+	0.48	+	2.96
43 Woolen Cloth	0.8759	256.38	256.11	244.55	+	0.11	+	4.84
44 Readymade Garments	0.9739	246.39	244.95	236.72	+	0.59	+	4.08
45 Woolen Readymade Garments	0.3964	258.35	258.38	252.98	-	0.01	+	2.12
46 Hosiery	0.5094	247.18	246.87	241.98	+	0.13	+	2.15
47 Dopatta	0.4412	244.81	244.48	240.75	+	0.13	+	1.69
48 Cleaning and Laundry	0.2110	270.23	269.30	253.34	+	0.35	+	6.67
49 Tailoring	0.8840	321.93	316.04	296.54	+	1.86	+	8.56
50 Footwear	1.5504	167.43	167.13	166.36	+	0.18	+	0.64

Annexure A:CPI by Commodity Groups and Commodities (2007-08=100)

Item and Specification	Weight	Index Numbers			% Change in May 2017 over			
		June2016	May2017	June2016	June 2017	May 2016		
<u>Housing, water, Elec., Gas and other fuels</u>	29.4149	196.71	196.70	187.17	+	0.01	+	5.10
51 House Rent	21.8149	188.68	188.68	176.44	+	0.00	+	6.94
52 Construction Input Items	0.5623	251.12	250.49	244.53	+	0.25	+	2.69
53 Construction Wage Rates	0.3331	240.47	240.32	228.82	+	0.06	+	5.09
54 Water Supply	0.4971	171.58	171.58	161.60	+	0.00	+	6.18
55 Electricity	4.3985	238.10	238.10	238.10	+	0.00	+	0.00
56 Gas	1.5756	158.08	158.08	158.08	+	0.00	+	0.00
57 Kerosene Oil	0.0057	200.60	198.42	193.53	+	1.10	+	3.65
58 Firewood Whole	0.2277	290.23	290.23	284.87	+	0.00	+	1.88
<u>Furnishing and household equipment maintenance</u>	4.2082	226.80	226.42	221.48	+	0.17	+	2.40
59 Furniture	0.3315	218.43	217.87	211.58	+	0.26	+	3.24
60 Household Textiles	0.6489	228.35	227.19	221.22	+	0.51	+	3.22
61 Household Equipment	0.5936	182.57	182.03	178.21	+	0.30	+	2.45
62 Utensils	0.3212	232.11	231.84	222.56	+	0.12	+	4.29
63 Plastic Products	0.2547	210.85	210.84	207.23	+	0.00	+	1.75
64 Washing Soaps & Detergents	0.7893	231.80	231.44	226.76	+	0.16	+	2.22
65 Sewing Needle & Dr Cell	0.1496	206.48	206.48	208.80	+	0.00	-	1.11
66 Household Servant	1.0432	253.47	253.47	248.71	+	0.00	+	1.91
67 Marriage Hall Charges	0.0762	248.67	248.67	244.63	+	0.00	+	1.65
<u>Health</u>	2.1868	212.66	212.65	187.68	+	0.00	+	13.31
68 Drugs & Medicines	1.2667	184.69	184.67	153.48	+	0.01	+	20.33
69 Medical Equipments	0.0080	251.21	251.21	233.55	+	0.00	+	7.56
70 Doctor (MBBS) Clinic Fee	0.5904	280.95	280.95	260.45	+	0.00	+	7.87
71 Medical Tests	0.3217	196.52	196.52	187.65	+	0.00	+	4.73
<u>Transport</u>	7.2023	175.87	176.43	169.34	-	0.32	+	3.86
72 Motor Vehicles	0.6630	175.81	175.12	165.17	+	0.39	+	6.44
73 Motor Vehicle Accessories	0.2439	211.58	211.92	213.88	-	0.16	-	1.08
74 Motor Fuel	3.0269	147.67	149.18	135.58	-	1.01	+	8.92
75 Mechanical Service	0.4552	230.82	230.37	224.68	+	0.20	+	2.73
76 Motor Vehicle Tax	0.1099	210.18	210.18	210.18	+	0.00	+	0.00
77 Transport Services	2.7034	193.59	193.59	193.15	+	0.00	+	0.23
<u>Communication</u>	3.2198	132.91	132.87	130.85	+	0.03	+	1.57
78 Postal Services	0.0662	250.18	249.29	239.48	+	0.36	+	4.47
79 Communication & Apparatus	3.1536	130.44	130.42	128.57	+	0.02	+	1.45
<u>Recreation and culture</u>	2.0227	196.15	196.12	195.70	+	0.02	+	0.23
80 Recreation & Culture	0.8634	129.73	129.73	128.89	+	0.00	+	0.65
81 Text Books	0.5706	287.98	287.98	292.41	+	0.00	-	1.51
82 Newspapers	0.1934	181.16	181.01	175.49	+	0.08	+	3.23
83 Stationery	0.3953	215.98	215.94	211.89	+	0.02	+	1.93
<u>Education</u>	3.9431	249.26	249.23	224.60	+	0.01	+	10.98
84 Education	3.9431	249.26	249.23	224.60	+	0.01	+	10.98
<u>Restaurants and hotels</u>	1.2286	277.76	277.29	263.41	+	0.17	+	5.45
85 Readymade Food	1.2286	277.76	277.29	263.41	+	0.17	+	5.45
<u>Misc. goods and services</u>	2.7550	246.71	245.99	233.42	+	0.29	+	5.69
86 Personal Care	1.4935	227.42	226.79	215.09	+	0.28	+	5.73
87 Cosmetics	0.3853	204.96	204.76	199.77	+	0.10	+	2.60
88 Blades	0.0322	197.80	197.80	195.16	+	0.00	+	1.35
89 Personal Equipments	0.8440	301.76	300.63	282.68	+	0.38	+	6.75

Annexure B: Wholesale Price Indices by Major Groups & Commodities

(2007-08=100)

Item and Specification	Weight	Index Numbers			% Change in Jun 2017 over			
		Jun 17	May 17	Jun 16	May 2017	Jun 2016		
General	100.0000	217.77	218.78	210.88	-	0.46	+	3.27
Agriculture Forestry & Fisher	25.7674	255.41	252.57	239.12	+	1.12	+	6.81
001 Wheat	0.6297	197.88	199.84	202.00	-	0.98	-	2.04
002 Maize	0.6764	194.40	193.75	204.06	+	0.34	-	4.73
003 Rice	2.4413	166.29	164.78	146.08	+	0.92	+	13.83
004 Sorghum / Jowar	0.0214	211.32	211.32	283.56	+	0.00	-	25.48
005 Millet / Bajra	0.0374	163.48	160.16	198.98	+	2.07	-	17.84
006 Vegetables	1.2441	241.83	244.61	246.21	-	1.14	-	1.78
007 Fresh Fruits	1.5144	362.37	319.44	305.11	+	13.44	+	18.77
008 Dry Fruits	0.2478	236.63	236.56	247.44	+	0.03	-	4.37
009 Cotton Seeds	1.1511	277.99	277.04	263.29	+	0.34	+	5.58
010 Other Oil Seeds	0.0722	181.04	181.57	170.50	-	0.29	+	6.18
011 Edible Roots / Potatoes	0.2540	271.09	232.84	177.50	+	16.43	+	<u>52.73</u>
012 Stimulant & Spice Crops	0.1634	221.79	208.56	218.56	+	6.34	+	1.48
013 Pulses	0.4901	266.71	269.80	293.16	-	1.15	-	9.02
014 Sugar Crops	1.0725	268.94	268.94	286.34	+	0.00	-	6.08
015 Fibre Crops	5.3169	219.02	218.63	180.30	+	0.18	+	21.48
016 Unmanufactured Tobacco	0.0742	291.25	290.42	243.77	+	0.29	+	19.48
017 Poultry	0.5633	192.50	205.02	203.67	-	6.11	-	5.48
018 Raw Milk from Bovine Animals	7.0279	268.56	268.56	258.97	+	0.00	+	3.70
019 Eggs	0.5034	182.17	178.14	165.23	+	2.26	+	10.25
020 Raw Animal Materials / Wool	0.0351	176.22	176.86	174.27	-	0.36	+	1.12
021 Hides & Fur Skins, Raw	0.4834	106.42	106.42	150.46	+	0.00	-	29.27
022 Fuel Wood in Logs	0.0179	279.63	279.63	264.77	+	0.00	+	5.61
023 Fish Live Fresh or Chilled	1.7295	466.43	466.43	445.91	+	0.00	+	4.60
Ores/Minerals, Elec., Gas & W	12.0389	241.61	241.85	244.28	-	0.10	-	1.09
024 Coal not Agglomerated	0.7508	155.29	155.29	160.78	+	0.00	-	3.41
025 Natural Gas Liquified	5.7385	208.46	208.89	208.42	-	0.21	+	0.02
026 Salt & Pure Sodium Chloride	0.0584	246.13	254.38	252.31	-	3.24	-	2.45
027 Electrical Energy	5.4912	288.00	288.00	293.09	+	0.00	-	1.74
Food, Beverages, Tobacco, Textil	31.1122	222.73	227.51	218.71	-	2.10	+	1.84
Food Products, Beverages &	20.0718	230.93	238.64	233.44	-	3.23	-	1.08
028 Meat of Animals	3.4559	291.67	288.83	274.34	+	0.98	+	6.32
029 Vegetables & Fruit Juice	0.0058	224.14	223.21	208.33	+	0.42	+	7.59
030 Dried Fruits & Nuts	0.1733	268.30	267.71	238.46	+	0.22	+	12.51
031 Fruit Juices	0.3880	181.82	181.68	181.90	+	0.08	-	0.04
032 Vegetable Oils Refined	1.9242	155.51	154.94	151.97	+	0.37	+	2.33
033 Vegetable Ghee	1.5632	126.16	126.11	121.87	+	0.04	+	3.52
034 Oil Cakes	0.9611	227.93	227.54	232.54	+	0.17	-	1.98
035 Processed Liquid Milk	4.4437	266.86	264.31	250.18	+	0.96	+	6.67
036 Milk & Cream in Solid Form	0.0316	219.35	218.36	219.30	+	0.45	+	0.02
037 Ice Cream	0.0047	261.28	261.28	233.72	+	0.00	+	11.79
038 Dairy Products N.E.C	0.0117	258.19	255.13	248.26	+	1.20	+	4.00
039 Wheat Flour	2.3034	189.57	191.32	192.23	-	0.91	-	1.38
040 Other Cereal Flour	0.0604	247.19	252.55	284.71	-	2.12	-	13.18
041 Sugar Refined	1.7975	210.04	214.13	245.61	-	1.91	-	14.48
042 Chocolate	0.0139	100.00	100.00	101.06	+	0.00	-	1.05
043 Sugar Confectionary	0.0738	128.44	128.44	118.83	+	0.00	+	8.09
044 Coffee & Tea	0.7303	263.86	264.11	230.07	-	0.09	+	14.69
045 Spices	0.1449	189.72	189.72	190.22	+	0.00	-	0.26
046 Other Food Products	0.0336	294.01	294.51	292.52	-	0.17	+	0.51
047 Mineral Water	0.0207	198.57	198.57	195.81	+	0.00	+	1.41
048 Beverages	0.6303	172.03	172.03	172.44	+	0.00	-	0.24
049 Tobacco Products	1.2998	318.37	445.85	435.03	-	28.59	-	26.82
Textiles & Apparels	10.3289	208.37	207.80	191.44	+	0.27	+	8.84
050 Cotton Yarn	5.2491	203.44	203.16	175.50	+	0.14	+	15.92
051 Nylon Yarn	0.1719	143.99	143.99	147.08	+	0.00	-	2.10
052 Blended Yarn	0.1689	182.11	182.28	176.75	-	0.09	+	3.03
053 Woven Fabrics	0.0128	316.28	316.28	279.69	+	0.00	+	13.08
054 Cotton Fabrics	0.6343	211.60	211.60	209.07	+	0.00	+	1.21
055 Other Fabrics	1.1016	227.16	227.16	222.56	+	0.00	+	2.07
056 Silk & Reyon Fabrics	0.7350	188.89	188.89	191.10	+	0.00	-	1.16
057 Towels	0.1235	276.14	276.14	267.20	+	0.00	+	3.35

Annexure B: Wholesale Price Indices by Major Groups & Commodities

(2007-08=100)

Item and Specification	Weight	Index Numbers			% Change in Jun 2017 over	
		Jun 17	May 17	Jun 16	May 2017	Jun 2016
058 Blankets	0.0029	247.52	247.52	243.93	+ 0.00	+ 1.47
059 Bed Sheets	0.0913	256.87	256.87	256.29	+ 0.00	+ 0.23
060 Quilts	0.0019	203.79	203.79	195.68	+ 0.00	+ 4.14
061 Woolen Carpets	0.0383	196.43	196.43	181.55	+ 0.00	+ 8.20
062 Synthetic Carpets	0.0566	130.95	130.95	129.25	+ 0.00	+ 1.32
063 Hosiery Products	0.8832	243.31	243.31	222.52	+ 0.00	+ 9.34
064 Readymade Garments	1.0576	201.37	197.19	199.39	+ 2.12	+ 0.99
Leather Products	0.7115	199.75	199.75	199.07	+ 0.00	+ 0.34
065 Leather Without Hair	0.2973	221.97	221.97	221.97	+ 0.00	+ 0.00
066 Other Leather N.E.C	0.2567	207.31	207.31	207.31	+ 0.00	+ 0.00
067 Footwears	0.1575	145.51	145.51	142.43	+ 0.00	+ 2.16
Other Transportable Goods	22.3659	170.67	171.76	164.46	- 0.63	+ 3.78
068 Timber	0.0165	231.53	231.53	220.36	+ 0.00	+ 5.07
069 Printing Paper	0.4279	165.67	165.63	166.34	+ 0.02	- 0.40
070 Hard Board	0.1579	220.83	220.83	212.50	+ 0.00	+ 3.92
071 Coke	0.2797	163.45	163.45	163.45	+ 0.00	+ 0.00
072 Motor Spirit	1.5336	122.95	124.98	108.54	- 1.62	+ 13.28
073 Diesel Oil	5.2664	155.08	156.91	136.30	- 1.17	+ 13.78
074 Kerosine Oil	0.2151	117.12	117.12	115.11	+ 0.00	+ 1.75
075 Furnace Oil	3.2664	98.32	99.91	76.28	- 1.59	+ 28.89
076 Mobil Oil	0.7114	201.29	201.29	196.00	+ 0.00	+ 2.70
077 Chemicals	1.7720	172.93	173.01	178.23	- 0.05	- 2.97
078 Dyeing Material	0.1539	146.55	146.55	146.55	+ 0.00	+ 0.00
079 Fertilizers	2.8657	216.40	218.85	250.41	- 1.12	- 13.58
080 Pesticides	0.2763	304.43	304.43	312.37	+ 0.00	- 2.54
081 Insecticides	0.1276	141.88	141.71	135.64	+ 0.12	+ 4.60
082 Paints & Varnishes	0.1916	294.51	294.51	295.36	+ 0.00	- 0.29
083 Medicines	1.1428	174.00	174.00	162.48	+ 0.00	+ 7.09
084 Soaps & Detergents	0.8168	191.14	191.14	184.58	+ 0.00	+ 3.55
085 Auto Tyres	0.2703	177.07	177.07	181.25	+ 0.00	- 2.31
086 Plastic Products	0.4550	225.88	225.88	228.35	+ 0.00	- 1.08
087 Glass sheets	0.2089	298.97	298.97	231.30	+ 0.00	+ 29.26
088 Other Glass Articles	0.1635	317.24	317.24	281.73	+ 0.00	+ 12.60
089 Ceramics & Sanitary Fixture	0.0244	233.92	233.92	231.59	+ 0.00	+ 1.01
090 Bricks, Blocks & Tiles	0.1566	220.73	220.73	218.86	+ 0.00	+ 0.85
091 Cement	1.8145	215.12	214.78	208.51	+ 0.16	+ 3.17
092 Bed Foam	0.0006	170.00	170.00	167.67	+ 0.00	+ 1.39
093 Matches	0.0505	171.36	171.36	162.62	+ 0.00	+ 5.37
Metal Product, Machinery & Eq	8.7156	176.73	176.43	172.48	+ 0.17	+ 2.46
094 Pig Iron	0.0593	128.97	128.97	128.97	+ 0.00	+ 0.00
095 Steel Bar & Sheets	1.4022	136.91	135.13	125.30	+ 1.32	+ 9.27
096 Pipe Fittings	0.0780	215.66	215.66	193.63	+ 0.00	+ 11.38
097 Steel Products	0.3879	177.56	177.56	176.99	+ 0.00	+ 0.32
098 Engines & Motors	0.0046	116.98	116.98	109.24	+ 0.00	+ 7.09
099 Vacuum Pumps	0.0155	123.69	123.69	114.95	+ 0.00	+ 7.60
100 Air Conditioners	0.0049	200.10	200.10	201.18	+ 0.00	- 0.54
101 Cultivators	0.0551	190.66	190.66	219.76	+ 0.00	- 13.24
102 Chuff Cutter	0.1293	153.46	153.46	149.20	+ 0.00	+ 2.86
103 Tractors	0.0028	201.75	201.75	205.43	+ 0.00	- 1.79
104 Lathe Machines	0.0525	241.06	241.06	208.81	+ 0.00	+ 15.44
105 Concrete Mixture	0.0107	138.83	138.83	138.83	+ 0.00	+ 0.00
106 Fridge,WashM,SewM,Fans,Iron	1.1645	214.85	214.75	201.88	+ 0.05	+ 6.42
107 Electric Wires	0.0912	204.51	204.51	195.19	+ 0.00	+ 4.77
108 Lighting Equipments	1.4431	170.73	170.73	170.34	+ 0.00	+ 0.23
109 Radio & Television	0.1843	140.42	140.42	133.46	+ 0.00	+ 5.22
110 Motor Vehicles	0.0244	195.36	191.39	185.25	+ 2.07	+ 5.46
111 Motorcycles	0.2570	125.89	125.89	125.89	+ 0.00	+ 0.00
112 Bicycles	3.3483	187.65	187.65	187.65	+ 0.00	+ 0.00