



Monthly Review on Price Indices



July, 2017
(Base 2007-08)

Government of Pakistan
Statistics Division
Pakistan Bureau of Statistics
Islamabad

Inflation in Brief

1. CPI inflation General increased by 2.9% on year-on-year basis in July 2017 as compared to an increase of 3.9% in the previous month and 4.1% in July 2016. On month-on-month basis, it increased by 0.3% in July 2017 as compared to a decrease of 0.4% in the previous month and an increase of 1.3% in July 2016.
2. Core inflation measured by non-food non-energy CPI (Core NFNE) increased by 5.6% on (YoY) basis in July 2017 as compared to increase of 5.5% in the previous month and 4.5% in July 2016. On (MoM) basis, it increased by 0.7% in July 2017 as compared to increase of 0.1% in previous month, and an increase of 0.6% in corresponding month of last year i.e. July 2016.
3. Core inflation, measured by 20% weighted trimmed mean CPI (Core Trimmed) increased by 4.0% on (YoY) basis in July 2017 as compared to 4.2% in the previous month and by 3.6% in July 2016. On (MoM) basis, it increased by 0.4% in July 2017 as compared to an increase of 0.0% in the previous month and an increase of 0.5% in corresponding month of last year i.e. July 2016.
4. SPI inflation on YoY decreased by 0.4% in July 2017 as compared to an increase of 1.4% a month earlier and an increase of 1.7% in July 2016. On MoM basis, it decreased by 0.5% in July 2017 as compared to an increase of 0.1% a month earlier and an increase of 1.3% in July 2016.
5. WPI inflation on YoY basis increased by 0.7% in July 2017 as compared to an increase of 3.3% a month earlier and an increase of 3.0% in July 2016. WPI inflation on MoM basis decreased by 0.2% in July 2017 as compared to a decrease of 0.5% a month earlier and an increase of 2.3% in corresponding month of last year i.e. July 2016.
6. Figures 1 and 2 show graphically the data of Table 1. Table 1.1 shows "Period Average" and "YoY" percent changes in indices of three years.

Table 1: Inflation (%) (Base 2007-08)

Period	CPI						Core Inflation				SPI**		WPI	
	General		Food		Non-food		NFNE*		Trimmed		YoY	MoM	YoY	MoM
	YoY	MoM	YoY	MoM	YoY	MoM	YoY	MoM	YoY	MoM				
Jun-16	3.2	0.6	2.3	1.4	3.8	0.1	4.6	0.1	3.7	0.2	0.7	1.1	0.2	1.4
Jul-16	4.1	1.3	4.7	2.5	3.7	0.5	4.5	0.6	3.6	0.5	1.7	1.3	3.0	2.3
Aug-16	3.6	-0.3	3.4	-0.9	3.7	0.2	4.6	0.2	3.5	0.1	2.2	0.2	3.5	0.0
Sep-16	3.9	0.2	4.0	0.1	3.8	0.2	4.8	0.3	3.7	0.1	1.8	0.1	3.4	-0.5
Oct-16	4.2	0.8	4.4	0.8	4.1	0.8	5.2	0.9	3.8	0.6	1.3	0.7	2.8	0.0
Nov-16	3.8	0.2	3.3	0.2	4.1	0.2	5.3	0.2	3.8	0.2	0.6	0.3	2.6	-0.2
Dec-16	3.7	-0.7	3.0	-1.9	4.2	0.2	5.2	0.1	3.7	0.1	0.5	-0.8	3.1	-0.1
Jan-17	3.7	0.2	2.6	-1.0	4.4	1.0	5.4	1.1	3.8	0.6	0.4	-0.8	4.2	0.5
Feb-17	4.2	0.3	3.7	0.3	4.6	0.3	5.3	0.2	4.1	0.2	1.1	0.2	5.3	0.5
Mar-17	4.9	0.8	5.0	1.9	4.9	0.1	5.3	0.1	4.5	0.2	3.1	1.8	6.4	0.7
Apr-17	4.8	1.4	4.4	1.7	5.1	1.2	5.5	1.3	4.8	0.8	2.3	-0.9	6.0	0.9
May-17	5.0	0.0	4.9	-0.2	5.1	0.2	5.5	0.2	4.8	0.2	2.4	-0.9	5.2	-0.2
Jun-17	3.9	-0.4	2.4	-1.1	5.0	0.1	5.5	0.1	4.2	0.0	1.4	0.1	3.3	-0.5
Jul-17	2.9	0.3	-0.1	0.0	5.1	0.5	5.6	0.7	4.0	0.4	-0.4	-0.5	0.7	-0.2

*NFNE is non-food non-energy, ** SPI for quintile 1. Digits 0.0* are due to rounding off.

Table 1.1 : Period Average and YoY % Changes of Indices (Base 2007-08)

Index	Averages July-July % Changes			July over July % Changes		
	2017-18	2016-17	2015-16	2017	2016	2015
CPI	2.91	4.12	1.87	2.91	4.12	1.87
SPI	-0.40	1.72	-0.48	-0.40	1.72	-0.48
WPI	0.66	3.00	-2.89	0.66	3.00	-2.89

Figure 2: CPI Inflation MoM, Special Indices

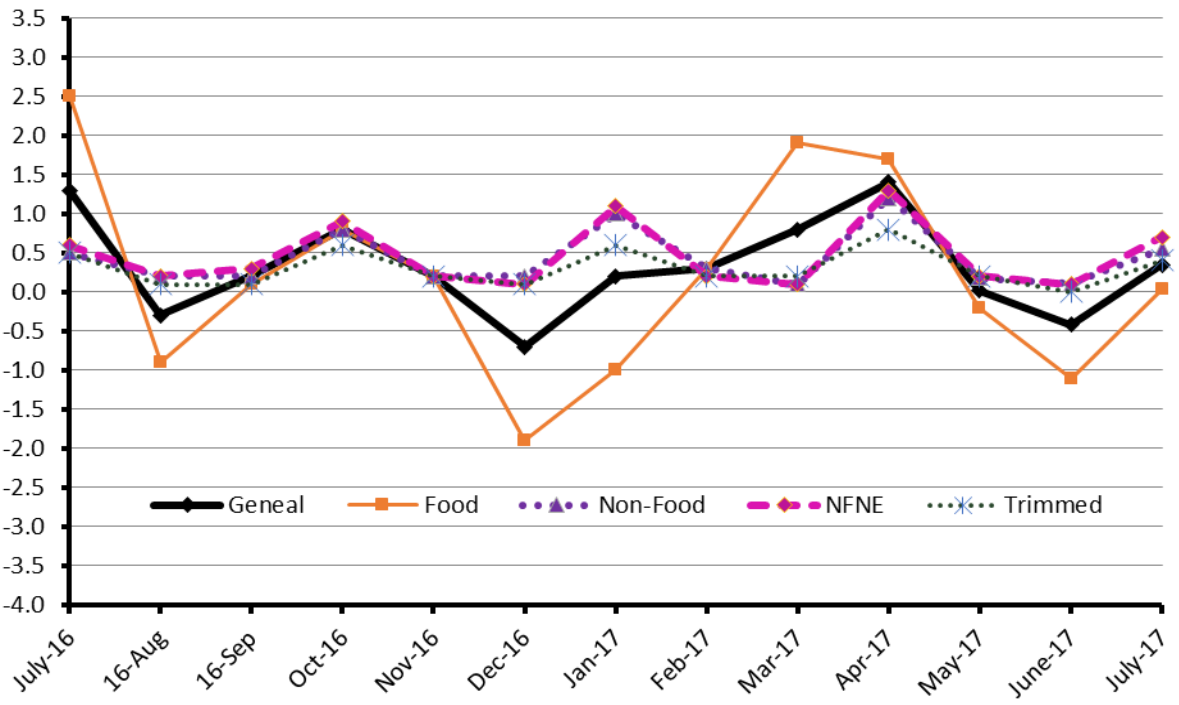
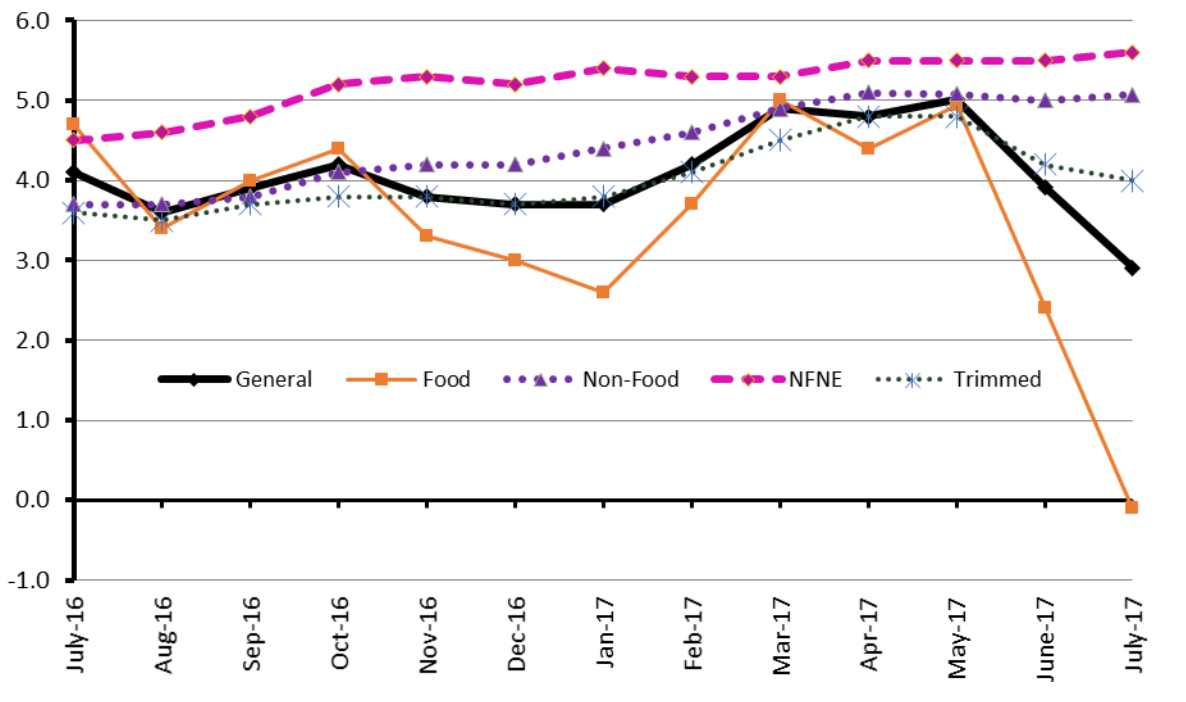


Figure 1: CPI Inflation YoY, Special Indices



II. Consumer Price Index (CPI)

The Consumer Price Index of July 2017, is increased by 0.34% over June 2017 and increased by 2.91% over corresponding month of the last year i.e. July 2016.

Table 2 : Consumer Price Index by Group of Commodities and Services (Base 2007-08)

No	Group	Group Weight (%)	Indices			% Change July 2017 Over		Impact (In % points) July 2017 Over	
			July 2017	June 2017	July 2016	June 2017	July 2016	June 2017	July 2016
	General	100.00	216.19	215.45	210.08	0.34	2.91	0.34	2.91
1.	Food & Non-alcoholic Bev.	34.83	229.99	229.18	228.36	0.35	0.71	0.13	0.27
	Non-perishable Food Items	29.84	226.63	226.09	223.10	0.24	1.58	0.08	0.50
	Perishable Food Items	4.99	250.05	247.64	259.85	0.97	-3.77	0.06	-0.23
2.	Alcoholic Bev.& Tobacco	1.41	306.67	324.60	364.79	-5.52	-15.93	-0.12	-0.39
3.	Clothing & Footwear	7.57	238.66	237.99	229.72	0.28	3.89	0.02	0.32
4.	Housing, Water, Electricity, Gas & Fuels	29.41	198.88	196.71	188.88	1.10	5.29	0.30	1.40
5.	Furnishing & Household Equipment Maintenance	4.21	227.74	226.80	221.70	0.41	2.72	0.02	0.12
6.	Health	2.19	212.91	212.66	187.84	0.12	13.35	0.00	0.26
7.	Transport	7.20	175.18	175.87	169.78	-0.39	3.18	-0.02	0.19
8.	Communication	3.22	132.88	132.91	130.89	-0.02	1.52	0.00	0.03
9.	Recreation & Culture	2.02	196.09	196.15	195.67	-0.03	0.21	0.00	0.00
10.	Education	3.94	249.54	249.26	224.09	0.11	11.36	0.01	0.48
11.	Restaurants & Hotels	1.23	278.44	277.76	264.37	0.24	5.32	0.00	0.08
12.	Miscellaneous	2.76	247.19	246.71	235.82	0.19	4.82	0.01	0.15

Main contributors to month-on-month and year-on-year percentage changes are given below and detail is given in Annexure A.

1. Month-on-month Top few commodities which varied from previous month are given below:-

Food Items Increased: Onion (9.99%), Fresh vegetables (9.31%), Chicken (4.34%), Potatoes (4.18%), Eggs (3.75%), Beans (3.10%) and Betel leaves & Nuts (1.24%).

Decreased: Fresh fruits (6.67%), Cigarettes (5.61%), Pulse Gram (2.82%), Tomatoes (2.43%), sugar (1.98%), Fish (1.71%), Pulse Mash (1.06%) and Wheat flour (1.05%).

Non-food Items Increased: House Rent (1.49%), Construction Input Items (1.17%), and Construction Wage Rates (0.95%).

Decreased: Motor Fuel (1.24%).

2. Year-on-Year: Top few commodities which varied from previous year i.e. May2016 are given below:-

Food Items Increased: Tea (14.35%), Rice (13.30%), Potatoes (12.24%), Fresh fruits (9.29%), Eggs (8.35%), Honey (6.62%), Meat (6.07%), Readymade food (5.32%), and Vegetable Ghee (4.28%).

Decreased: Tomatoes (45.10%), Pulse Mash (24.96%), Pulse Moong (18.01%), Pulse Masoor (16.37%), Pulse Gram (16.15%), Cigarettes (16.14%), Sugar (15.80%) and Besan (12.04%).

Non-food Items Increased: Drugs & Medicines (20.39%), Education (11.36%), Tailoring (8.21%), Doctor (MBBS) Clinic Fee (7.87%), Medical Equipments (7.54%), Motor Fuel (7.42%), House Rent (7.19%), Cleaning and Laundry (6.90%), and Personal care (5.77%).

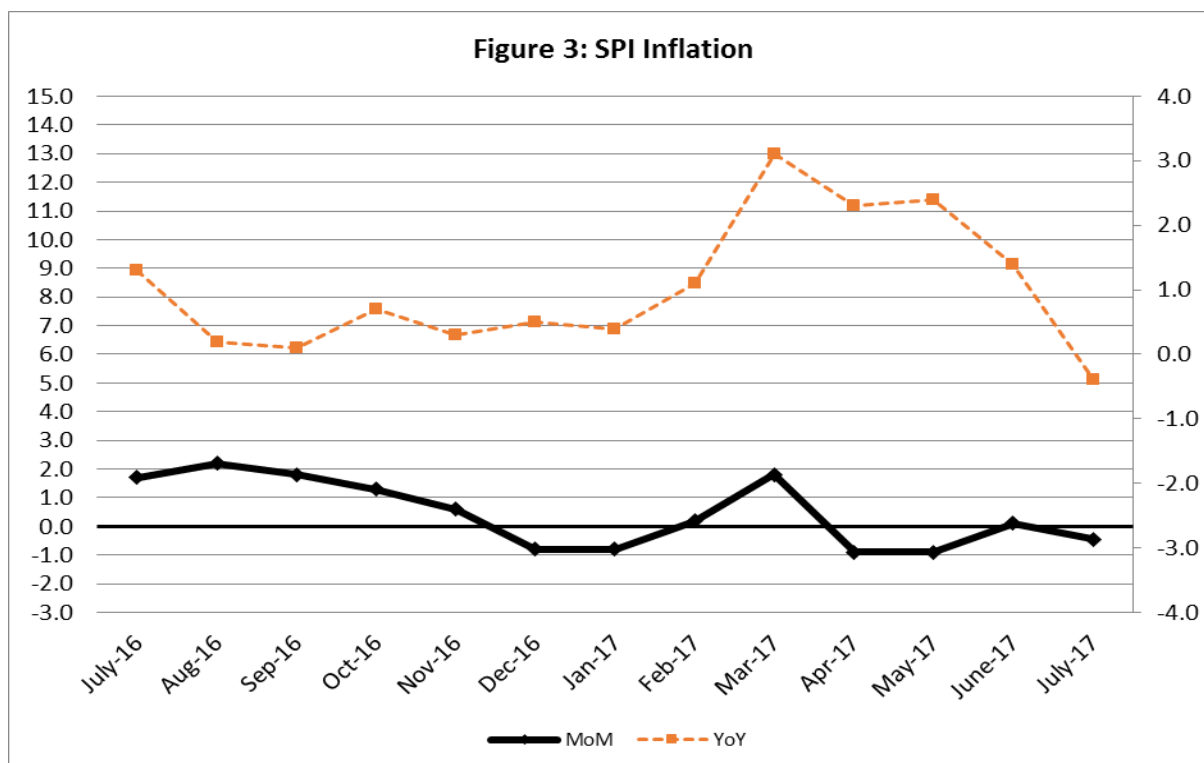
Decreased: Motor Vehicle Accessories (1.13%).

III. Sensitive Price Indicator

Quintile-wise percentage changes YoY and MoM are given below in Table 3. The series from June 2016 to June 2017 is also graphed below in Figure 3.

Table 3: Sensitive Price Indicator (Base 2007-08)					
Quintiles	Indices			% Change July 2017 over	
	July 2017	June 2017	July 2016	June 2017	July 2016
1	208.76	209.71	209.59	-0.45	-0.40
2	216.83	217.96	216.91	-0.52	-0.04
3	218.32	219.50	218.20	-0.54	0.05
4	223.29	224.70	222.74	-0.63	0.25
5	220.70	222.37	219.55	-0.75	0.52
Combined	219.28	220.68	218.81	-0.63	0.21

Table 3.1 : Weekly Percentage Change of SPI During July-17				
Quintiles	% Change with Previous week			
	6 th July-2017	13 th July -2017	20 th July -2017	27 th July-2017
Quantile 1	-0.62	-0.24	-0.13	-0.13
Combined	-0.66	-0.20	-0.19	-0.13



IV. Wholesale Price Index

The Wholesale Price Index for July, 2017 decreased by 0.24% over June, 2017. It increased by 0.66% over the corresponding month of the last year. YoY and MoM movements, from July, 2016 to July, 2017 are also graphed below in Figure 4.

Table 4 : Wholesale Price Index by Group of Commodities (Base 2007-08)

No.	Group	Group Weight (%)	Indices			% Change July, 2017 over		Impact (in %age points) July, 2017 over	
			July 2017	June 2017	July 2016	June 2017	July 2016	June 2017	July 2016
	General	100.00	217.24	217.77	215.81	-0.24	0.66	-0.33	0.57
1.	Agriculture, Forestry & Fishery Products	25.77	251.86	255.41	253.54	-1.39	-0.66	-0.52	-0.30
2.	Ores & Minerals, Electricity, Gas & Water	12.04	241.76	241.61	241.43	0.06	0.14	0.01	0.02
3.	Food Products, Beverages & Tobacco, Textiles, Apparel & Leather Products	31.11	224.20	222.73	223.61	0.66	0.26	0.21	0.08
	i. Food Products, Bev. & Tobacco	20.07	233.42	230.93	235.27	1.08	-0.79	0.23	-0.17
	ii. Textiles and Apparel	10.33	207.97	208.37	202.64	-0.19	2.63	-0.02	0.26
	iii. Leather Products	0.71	199.75	199.75	199.21	0.00	0.27	0.00	0.00
4.	Other Transportable Goods except Metal Products, Machinery & Equipment	22.37	170.61	170.67	164.40	-0.04	3.78	-0.01	0.64
5.	Metal Products, Machinery & Equipment	8.72	176.14	176.73	172.94	-0.33	1.85	-0.02	0.13

Main contributors to month-on-month and year-on-year percentage changes are given below and detail is given in Annexure B.

1. **Month-on-month** Top few commodities which varied from previous month i.e. June, 2017 are given below:-

Increased: Vegetables (18.10%), Stimulant & Spice Crops (9.58%), Eggs (5.15%), Process Liquid Milk (4.82%), Poultry (4.48%), Dairy Products N.E.C (4.39%), Chemicals (2.86%), Cement (2.32%), Ice Cream (1.81%) and Milk & Cream in Solid Form (1.10%).

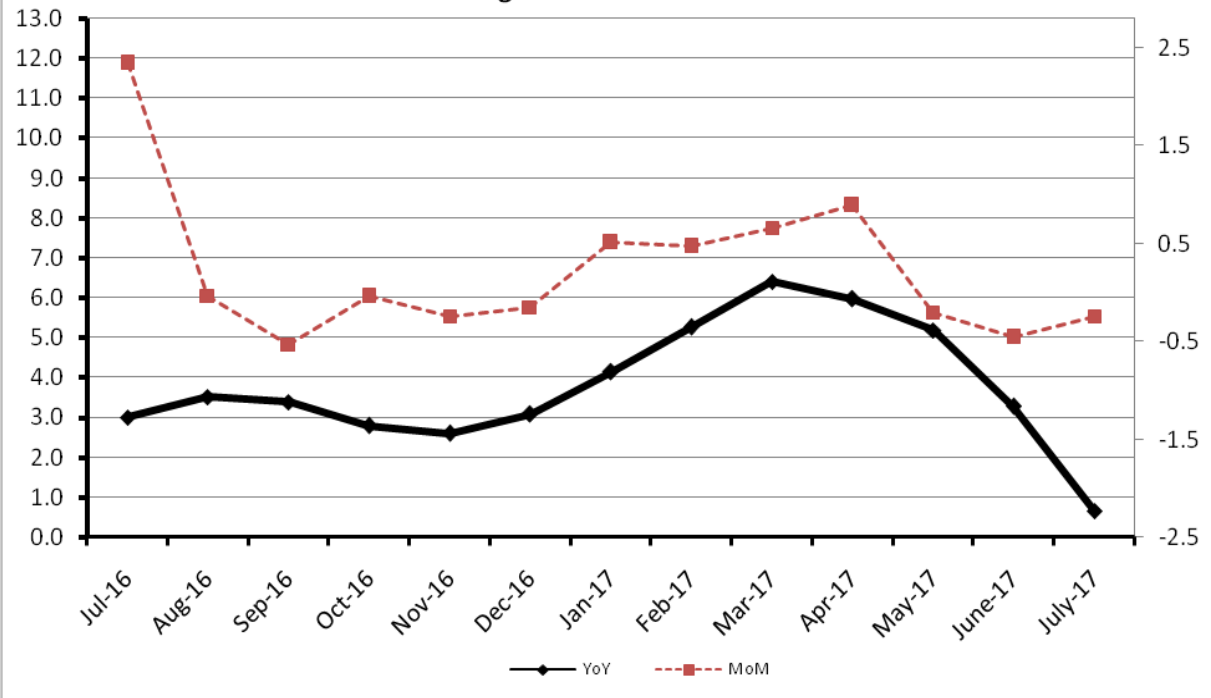
Decreased: Fresh Fruits (13.09%), Fiber Crops (6.66%), Other Cereal Flour (4.30%), Hides & Fur Skins (3.42%), Maize (3.34%), Sugar (3.17%), Motor Spirit (2.06%), Bajra (1.75%), Insecticides (1.58%) and Wool (1.37%).

2. **Year-on-year** Top few commodities which varied from previous year i.e. July, 2016 are given below:-

Increased: Glass Sheets (28.25%), Furnace Oil (21.32%), Potatoes (20.76%), Unmanufactured Tobacco (15.82%), Stimulant & Spice Crops (15.76%), Lathe Machine (15.44%), Coffee & Tea (13.55%), Rice (13.35%) and Woven Fabrics (13.08%).

Decreased: Hides & Fur Skins (31.69%), Tobacco Products (26.82%), Bajra (26.41%), Other Cereal Flour (23.62%), Jowar (23.06%), Vegetables (20.93%), Sugar (20.20%), Pulses (14.97%) and Cultivators (13.24%).

Figure 4: WPI Inflation



Annexure A:CPI by Commodity Groups and Commodities (2007-08=100)

Item and Specification	Weight	Index Numbers			% Change in July 2017 over			
		July 2017	June 2017	July 2016	Jun 2017	July 2016		
<u>General</u>	<u>100.0000</u>	<u>216.19</u>	<u>215.45</u>	<u>210.08</u>	±	<u>0.34</u>	±	<u>2.91</u>
<u>Food and non-alcoholic Beverages</u>	<u>34.8343</u>	<u>229.99</u>	<u>229.18</u>	<u>228.36</u>	±	<u>0.35</u>	±	<u>0.71</u>
1 Wheat	0.3477	191.16	192.58	190.81	-	0.74	+	0.18
2 Wheat Flour	4.1648	204.66	206.83	208.98	-	1.05	-	2.07
3 Wheat Product	0.0959	213.98	214.38	214.98	-	0.19	-	0.47
4 Besan	0.1500	283.83	285.65	322.68	-	0.64	-	12.04
5 Rice	1.5821	179.16	178.03	158.13	+	0.63	+	13.30
6 Cereals	0.1563	255.20	254.31	249.62	+	0.35	+	2.24
7 Bakery & Confectionary	1.1550	218.39	218.31	215.31	+	0.04	+	1.43
8 Nimco	0.4574	255.18	254.89	248.79	+	0.11	+	2.57
9 Meat	2.4303	278.70	278.12	262.75	+	0.21	+	6.07
10 Chicken	1.3596	190.36	182.45	184.75	+	4.34	+	3.04
11 Fish	0.2970	214.09	217.81	218.77	-	1.71	-	2.14
12 Milk Fresh	6.6800	275.62	273.62	265.50	+	0.73	+	3.81
13 Milk Products	0.6338	264.40	262.51	256.27	+	0.72	+	3.17
14 Milk Powder	0.1129	234.53	233.49	236.84	+	0.45	-	0.98
15 Eggs	0.4555	193.19	186.21	178.31	+	3.75	+	8.35
16 Mustard Oil	0.0952	159.87	159.86	153.99	+	0.01	+	3.82
17 Cooking Oil	1.7538	138.25	137.77	133.61	+	0.35	+	3.47
18 Vegetable Ghee	2.0714	142.80	142.61	136.94	+	0.13	+	4.28
19 Dry Fruits	0.2543	264.33	264.11	263.57	+	0.08	+	0.29
20 Fresh Fruits	1.8649	284.14	304.46	259.98	-	6.67	+	9.29
21 Pulse Masoor	0.2712	178.60	178.77	213.56	-	0.10	-	16.37
22 Pulse Moong	0.2336	243.58	243.58	297.08	+	0.00	-	18.01
23 Pulse Mash (Washed)	0.2098	279.76	282.75	372.81	-	1.06	-	24.96
24 Pulse Gram	0.2361	281.95	290.14	336.26	-	2.82	-	16.15
25 Gram Whole	0.1616	287.96	287.99	298.45	-	0.01	-	3.51
26 Beans	0.0269	242.51	235.22	236.29	+	3.10	+	2.63
27 Potatoes	0.4699	261.30	250.82	232.81	+	4.18	+	12.24
28 Onion	0.5340	181.81	165.29	195.56	+	9.99	-	7.03
29 Tomatoes	0.4419	128.96	132.17	234.89	-	2.43	-	45.10
30 Fresh Vegetables	1.6802	262.61	240.24	294.26	+	9.31	-	10.76
31 Sugar	1.0445	200.46	204.50	238.08	-	1.98	-	15.80
32 Gur	0.0220	260.49	261.06	280.90	-	0.22	-	7.27
33 Honey	0.0446	331.37	331.39	310.80	-	0.01	+	6.62
34 SweetMeat	0.2483	251.88	251.16	242.45	+	0.29	+	3.89
35 Beverages	1.1990	226.09	227.14	221.71	-	0.46	+	1.98
36 Jam, Tomato Ketchup & Pickles	0.2454	218.93	218.46	215.61	+	0.22	+	1.54
37 Condiments	0.2656	269.74	269.13	263.23	+	0.23	+	2.47
38 Spices	0.5441	236.34	236.29	241.62	+	0.02	-	2.19
39 Tea	0.8377	291.89	290.45	255.25	+	0.50	+	14.35
<u>Alcoholic Beverages, Tobacco</u>	<u>1.4135</u>	<u>306.67</u>	<u>324.60</u>	<u>364.79</u>	-	<u>5.52</u>	-	<u>15.93</u>
40 Cigarettes	1.3906	307.56	325.84	366.77	-	5.61	-	16.14
41 Betel Leaves & Nuts	0.0229	252.67	249.57	244.15	+	1.24	+	3.49
<u>Clothing and footwear</u>	<u>7.5708</u>	<u>238.66</u>	<u>237.99</u>	<u>229.72</u>	±	<u>0.28</u>	±	<u>3.89</u>
42 Cotton Cloth	1.7286	232.33	231.26	224.88	+	0.46	+	3.31
43 Woolen Cloth	0.8759	256.60	256.38	244.64	+	0.09	+	4.89
44 Readymade Garments	0.9739	247.08	246.39	237.04	+	0.28	+	4.24
45 Woolen Readymade Garments	0.3964	258.31	258.35	253.14	-	0.02	+	2.04
46 Hosiery	0.5094	248.56	247.18	242.55	+	0.56	+	2.48
47 Dopatta	0.4412	246.51	244.81	240.75	+	0.69	+	2.39
48 Cleaning and Laundry	0.2110	270.83	270.23	253.34	+	0.22	+	6.90
49 Tailoring	0.8840	322.81	321.93	298.33	+	0.27	+	8.21
50 Footwear	1.5504	167.43	167.43	166.44	+	0.00	+	0.59

Item and Specification	Weight	Index Numbers			% Change in July 2017 over			
		July 2017	June 2017	July 2016	Jun 2017	July 2016		
<u>Housing, water, Elec., Gas and other fuels</u>	29.4149	198.88	196.71	188.88	+	1.10	+	5.29
51 House Rent	21.8149	191.49	188.68	178.64	+	1.49	+	7.19
52 Construction Input Items	0.5623	254.05	251.12	247.05	+	1.17	+	2.83
53 Construction Wage Rates	0.3331	242.75	240.47	230.10	+	0.95	+	5.50
54 Water Supply	0.4971	171.58	171.58	163.32	+	0.00	+	5.06
55 Electricity	4.3985	238.10	238.10	238.10	+	0.00	+	0.00
56 Gas	1.5756	158.08	158.08	158.08	+	0.00	+	0.00
57 Kerosene Oil	0.0057	198.67	200.60	194.70	-	0.96	+	2.04
58 Firewood Whole	0.2277	290.72	290.23	284.20	+	0.17	+	2.29
<u>Furnishing and household equipment maintenance</u>	4.2082	227.74	226.80	221.70	+	0.41	+	2.72
59 Furniture	0.3315	219.56	218.43	211.78	+	0.52	+	3.67
60 Household Textiles	0.6489	229.70	228.35	221.08	+	0.59	+	3.90
61 Household Equipment	0.5936	182.79	182.57	178.43	+	0.12	+	2.44
62 Utensils	0.3212	232.63	232.11	222.57	+	0.22	+	4.52
63 Plastic Products	0.2547	211.07	210.85	207.38	+	0.10	+	1.78
64 Washing Soaps & Detergents	0.7893	232.61	231.80	227.15	+	0.35	+	2.40
65 Sewing Needle & Dr Cell	0.1496	207.74	206.48	208.27	+	0.61	-	0.25
66 Household Servant	1.0432	254.90	253.47	249.34	+	0.56	+	2.23
67 Marriage Hall Charges	0.0762	248.67	248.67	243.04	+	0.00	+	2.32
<u>Health</u>	2.1868	212.91	212.66	187.84	+	0.12	+	13.35
68 Drugs & Medicines	1.2667	185.10	184.69	153.75	+	0.22	+	20.39
69 Medical Equipments	0.0080	251.81	251.21	234.15	+	0.24	+	7.54
70 Doctor (MBBS) Clinic Fee	0.5904	280.95	280.95	260.45	+	0.00	+	7.87
71 Medical Tests	0.3217	196.54	196.52	187.65	+	0.01	+	4.74
<u>Transport</u>	7.2023	175.18	175.87	169.78	-	0.39	+	3.18
72 Motor Vehicles	0.6630	176.06	175.81	167.27	+	0.14	+	5.25
73 Motor Vehicle Accessories	0.2439	211.42	211.58	213.84	-	0.08	-	1.13
74 Motor Fuel	3.0269	145.84	147.67	135.77	-	1.24	+	7.42
75 Mechanical Service	0.4552	231.88	230.82	227.35	+	0.46	+	1.99
76 Motor Vehicle Tax	0.1099	210.18	210.18	210.18	+	0.00	+	0.00
77 Transport Services	2.7034	193.59	193.59	193.15	+	0.00	+	0.23
<u>Communication</u>	3.2198	132.88	132.91	130.89	-	0.02	+	1.52
78 Postal Services	0.0662	250.44	250.18	240.38	+	0.10	+	4.19
79 Communication & Apparatus	3.1536	130.41	130.44	128.59	-	0.02	+	1.42
<u>Recreation and culture</u>	2.0227	196.09	196.15	195.67	-	0.03	+	0.21
80 Recreation & Culture	0.8634	129.20	129.73	128.84	-	0.41	+	0.28
81 Text Books	0.5706	287.98	287.98	292.41	+	0.00	-	1.51
82 Newspapers	0.1934	181.78	181.16	175.49	+	0.34	+	3.58
83 Stationery	0.3953	216.54	215.98	211.89	+	0.26	+	2.19
<u>Education</u>	3.9431	249.54	249.26	224.09	+	0.11	+	11.36
84 Education	3.9431	249.54	249.26	224.09	+	0.11	+	11.36
<u>Restaurants and hotels</u>	1.2286	278.44	277.76	264.37	+	0.24	+	5.32
85 Readymade Food	1.2286	278.44	277.76	264.37	+	0.24	+	5.32
<u>Misc. goods and services</u>	2.7550	247.19	246.71	235.82	+	0.19	+	4.82
86 Personal Care	1.4935	228.11	227.42	215.67	+	0.30	+	5.77
87 Cosmetics	0.3853	205.40	204.96	200.22	+	0.21	+	2.59
88 Blades	0.0322	197.80	197.80	195.16	+	0.00	+	1.35
89 Personal Equipments	0.8440	301.92	301.76	289.27	+	0.05	+	4.37

Annexure B: Wholesale Price Indices by Major Groups & Commodities

(2007-08=100)

Item and Specification	Weight	Index Numbers			% Change in Jul 2017 over			
		Jul 17	Jun 17	Jul 16	Jun 2017	Jul 2016		
General	99.9118	217.24	217.77	215.81	-	0.24	+	0.66
Agriculture Forestry & Fisher	25.6792	251.86	255.41	253.54	-	1.39	-	0.66
001 Wheat	0.6297	196.73	197.88	204.39	-	0.58	-	3.75
002 Maize	0.6764	187.91	194.40	204.55	-	3.34	-	8.13
003 Rice	2.4413	167.90	166.29	148.12	+	0.97	+	13.35
004 Sorghum / Jowar	0.0214	213.13	211.32	277.01	+	0.86	-	23.06
005 Millet / Bajra	0.0374	160.62	163.48	218.25	-	1.75	-	26.41
006 Vegetables	1.2441	285.60	241.83	361.19	+	18.10	-	20.93
007 Fresh Fruits	1.4262	314.93	362.37	307.84	-	13.09	+	2.30
008 Dry Fruits	0.2478	237.06	236.63	247.50	+	0.18	-	4.22
009 Cotton Seeds	1.1511	280.36	277.99	273.95	+	0.85	+	2.34
010 Other Oil Seeds	0.0722	182.82	181.04	171.21	+	0.98	+	6.78
011 Edible Roots / Potatoes	0.2540	273.56	271.09	226.53	+	0.91	+	20.76
012 Stimulant & Spice Crops	0.1634	243.03	221.79	209.95	+	9.58	+	15.76
013 Pulses	0.4901	266.22	266.71	313.08	-	0.18	-	14.97
014 Sugar Crops	1.0725	268.94	268.94	286.34	+	0.00	-	6.08
015 Fibre Crops	5.3169	204.44	219.02	203.00	-	6.66	+	0.71
016 Unmanufactured Tobacco	0.0742	290.76	291.25	251.05	-	0.17	+	15.82
017 Poultry	0.5633	201.12	192.50	188.40	+	4.48	+	6.75
018 Raw Milk from Bovine Animals	7.0279	268.56	268.56	261.80	+	0.00	+	2.58
019 Eggs	0.5034	191.56	182.17	185.05	+	5.15	+	3.52
020 Raw Animal Materials / Wool	0.0351	173.80	176.22	173.89	-	1.37	-	0.05
021 Hides & Fur Skins, Raw	0.4834	102.78	106.42	150.46	-	3.42	-	31.69
022 Fuel Wood in Logs	0.0179	279.63	279.63	264.77	+	0.00	+	5.61
023 Fish Live Fresh or Chilled	1.7295	463.98	466.43	469.80	-	0.53	-	1.24
Ores/Minerals, Elec., Gas & W	12.0389	241.76	241.61	241.43	+	0.06	+	0.14
024 Coal not Agglomerated	0.7508	155.29	155.29	152.94	+	0.00	+	1.54
025 Natural Gas Liquefied	5.7385	208.82	208.46	208.30	+	0.17	+	0.25
026 Salt & Pure Sodium Chloride	0.0584	242.77	246.13	254.33	-	1.37	-	4.55
027 Electrical Energy	5.4912	288.00	288.00	288.00	+	0.00	+	0.00
Food, Beverages, Tobacco, Textil	31.1122	224.20	222.73	223.61	+	0.66	+	0.26
Food Products, Beverages &	20.0718	233.42	230.93	235.27	+	1.08	-	0.79
028 Meat of Animals	3.4559	294.10	291.67	276.90	+	0.83	+	6.21
029 Vegetables & Fruit Juice	0.0058	223.38	224.14	208.88	-	0.34	+	6.94
030 Dried Fruits & Nuts	0.1733	268.30	268.30	239.77	+	0.00	+	11.90
031 Fruit Juices	0.3880	181.83	181.82	182.12	+	0.01	-	0.16
032 Vegetable Oils Refined	1.9242	155.56	155.51	152.00	+	0.03	+	2.34
033 Vegetable Ghee	1.5632	126.24	126.16	120.58	+	0.06	+	4.69
034 Oil Cakes	0.9611	229.39	227.93	235.62	+	0.64	-	2.64
035 Processed Liquid Milk	4.4437	279.71	266.86	251.20	+	4.82	+	11.35
036 Milk & Cream in Solid Form	0.0316	221.77	219.35	220.87	+	1.10	+	0.41
037 Ice Cream	0.0047	266.02	261.28	238.04	+	1.81	+	11.75
038 Dairy Products N.E.C	0.0117	269.53	258.19	248.53	+	4.39	+	8.45
039 Wheat Flour	2.3034	188.03	189.57	193.90	-	0.81	-	3.03
040 Other Cereal Flour	0.0604	236.55	247.19	309.70	-	4.30	-	23.62
041 Sugar Refined	1.7975	203.39	210.04	254.89	-	3.17	-	20.20
042 Chocolate	0.0139	100.00	100.00	99.45	+	0.00	+	0.55
043 Sugar Confectionary	0.0738	128.44	128.44	118.83	+	0.00	+	8.09
044 Coffee & Tea	0.7303	261.18	263.86	230.02	-	1.02	+	13.55
045 Spices	0.1449	189.72	189.72	190.20	+	0.00	-	0.25
046 Other Food Products	0.0336	294.01	294.01	293.85	+	0.00	+	0.05
047 Mineral Water	0.0207	199.51	198.57	196.22	+	0.47	+	1.68
048 Beverages	0.6303	172.92	172.03	172.44	+	0.52	+	0.28
049 Tobacco Products	1.2998	318.37	318.37	435.03	+	0.00	-	26.82
Textiles & Apparels	10.3289	207.97	208.37	202.64	-	0.19	+	2.63
050 Cotton Yarn	5.2491	202.68	203.44	197.57	-	0.37	+	2.59
051 Nylon Yarn	0.1719	143.99	143.99	147.08	+	0.00	-	2.10
052 Blended Yarn	0.1689	182.65	182.11	177.11	+	0.30	+	3.13
053 Woven Fabrics	0.0128	316.28	316.28	279.69	+	0.00	+	13.08
054 Cotton Fabrics	0.6343	211.33	211.60	208.84	-	0.13	+	1.19
055 Other Fabrics	1.1016	227.16	227.16	222.36	+	0.00	+	2.16
056 Silk & Reyon Fabrics	0.7350	188.89	188.89	190.96	+	0.00	-	1.08
057 Towels	0.1235	276.14	276.14	267.20	+	0.00	+	3.35

Annexure B: Wholesale Price Indices by Major Groups & Commodities

(2007-08=100)

Item and Specification	Weight	Index Numbers			% Change in Jul 2017 over	
		Jul 17	Jun 17	Jul 16	Jun 2017	Jul 2016
058 Blankets	0.0029	247.52	247.52	243.93	+ 0.00	+ 1.47
059 Bed Sheets	0.0913	256.87	256.87	256.29	+ 0.00	+ 0.23
060 Quilts	0.0019	208.42	203.79	198.00	+ 2.27	+ 5.26
061 Woolen Carpets	0.0383	196.43	196.43	181.55	+ 0.00	+ 8.20
062 Synthetic Carpets	0.0566	130.95	130.95	129.25	+ 0.00	+ 1.32
063 Hosiery Products	0.8832	243.31	243.31	222.52	+ 0.00	+ 9.34
064 Readymade Garments	1.0576	201.37	201.37	199.61	+ 0.00	+ 0.88
Leather Products	0.7115	199.75	199.75	199.21	+ 0.00	+ 0.27
065 Leather Without Hair	0.2973	221.97	221.97	221.97	+ 0.00	+ 0.00
066 Other Leather N.E.C	0.2567	207.31	207.31	207.31	+ 0.00	+ 0.00
067 Footwears	0.1575	145.51	145.51	143.05	+ 0.00	+ 1.72
Other Transportable Goods	22.3659	170.61	170.67	164.40	- 0.04	+ 3.78
068 Timber	0.0165	231.53	231.53	220.36	+ 0.00	+ 5.07
069 Printing Paper	0.4279	166.11	165.67	165.84	+ 0.27	+ 0.16
070 Hard Board	0.1579	220.83	220.83	212.50	+ 0.00	+ 3.92
071 Coke	0.2797	163.45	163.45	163.45	+ 0.00	+ 0.00
072 Motor Spirit	1.5336	120.42	122.95	108.54	- 2.06	+ 10.95
073 Diesel Oil	5.2664	153.43	155.08	144.34	- 1.06	+ 6.30
074 Kerosine Oil	0.2151	117.12	117.12	115.11	+ 0.00	+ 1.75
075 Furnace Oil	3.2664	97.35	98.32	80.24	- 0.99	+ 21.32
076 Mobil Oil	0.7114	201.29	201.29	196.00	+ 0.00	+ 2.70
077 Chemicals	1.7720	177.88	172.93	178.21	+ 2.86	- 0.19
078 Dyeing Material	0.1539	146.55	146.55	146.55	+ 0.00	+ 0.00
079 Fertilizers	2.8657	215.02	216.40	227.23	- 0.64	- 5.37
080 Pesticides	0.2763	306.06	304.43	312.37	+ 0.54	- 2.02
081 Insecticides	0.1276	139.64	141.88	137.30	- 1.58	+ 1.70
082 Paints & Varnishes	0.1916	294.51	294.51	295.36	+ 0.00	- 0.29
083 Medicines	1.1428	174.14	174.00	162.62	+ 0.08	+ 7.08
084 Soaps & Detergents	0.8168	191.20	191.14	185.10	+ 0.03	+ 3.30
085 Auto Tyres	0.2703	177.07	177.07	181.25	+ 0.00	- 2.31
086 Plastic Products	0.4550	225.88	225.88	228.35	+ 0.00	- 1.08
087 Glass sheets	0.2089	298.97	298.97	233.11	+ 0.00	+ 28.25
088 Other Glass Articles	0.1635	317.24	317.24	299.07	+ 0.00	+ 6.08
089 Ceramics & Sanitary Fixture	0.0244	232.65	233.92	231.59	- 0.54	+ 0.46
090 Bricks, Blocks & Tiles	0.1566	221.24	220.73	218.73	+ 0.23	+ 1.15
091 Cement	1.8145	220.11	215.12	211.95	+ 2.32	+ 3.85
092 Bed Foam	0.0006	170.33	170.00	158.83	+ 0.19	+ 7.24
093 Matches	0.0505	171.36	171.36	162.62	+ 0.00	+ 5.37
Metal Product, Machinery & Eq	8.7156	176.14	176.73	172.94	- 0.33	+ 1.85
094 Pig Iron	0.0593	128.97	128.97	128.97	+ 0.00	+ 0.00
095 Steel Bar & Sheets	1.4022	137.44	136.91	124.34	+ 0.39	+ 10.54
096 Pipe Fittings	0.0780	215.66	215.66	193.63	+ 0.00	+ 11.38
097 Steel Products	0.3879	177.56	177.56	176.99	+ 0.00	+ 0.32
098 Engines & Motors	0.0046	116.98	116.98	109.24	+ 0.00	+ 7.09
099 Vacuum Pumps	0.0155	123.69	123.69	114.95	+ 0.00	+ 7.60
100 Air Conditioners	0.0049	200.10	200.10	201.18	+ 0.00	- 0.54
101 Cultivators	0.0551	190.66	190.66	219.76	+ 0.00	- 13.24
102 Chuff Cutter	0.1293	153.46	153.46	149.20	+ 0.00	+ 2.86
103 Tractors	0.0028	201.75	201.75	203.68	+ 0.00	- 0.95
104 Lathe Machines	0.0525	241.06	241.06	208.81	+ 0.00	+ 15.44
105 Concrete Mixture	0.0107	138.83	138.83	138.83	+ 0.00	+ 0.00
106 Fridge,WashM,SewM,Fans,Iron	1.1645	214.93	214.85	204.01	+ 0.04	+ 5.35
107 Electric Wires	0.0912	205.92	204.51	195.19	+ 0.69	+ 5.50
108 Lighting Equipments	1.4431	170.73	170.73	172.03	+ 0.00	- 0.76
109 Radio & Television	0.1843	140.42	140.42	135.55	+ 0.00	+ 3.59
110 Motor Vehicles	0.0244	195.36	195.36	185.25	+ 0.00	+ 5.46
111 Motorcycles	0.2570	125.89	125.89	125.89	+ 0.00	+ 0.00
112 Bicycles	3.3483	185.81	187.65	187.65	- 0.98	- 0.98