

# Monthly Review on Price Indices



**October, 2016**  
**(Base 2007-08)**

**Government of Pakistan**  
**Statistics Division**  
**Pakistan Bureau of Statistics**  
**Islamabad**



## Inflation in Brief

1. CPI inflation General increased by 4.2% on year-on-year basis in October 2016 as compared to an increase of 3.9% in the previous month and 1.6% in October 2015. On month-on-month basis, it increased by 0.8% in October 2016 as compared to an increase of 0.2% in the previous month and a increase of 0.5% in October 2015.
2. Core inflation measured by non-food non-energy CPI (Core NFNE) increased by 5.2% on (YoY) basis in October 2016 as compared to increase of 4.8% in the previous month and 3.4% in October 2015. On (MoM) basis, it increased by 0.9% in October 2016 as compared to increase of 0.3% in previous month ,whereas no change was observed in corresponding month of last year i.e. October 2015.
3. Core inflation, measured by 20% weighted trimmed mean CPI (Core Trimmed) increased by 3.8% on (YoY) basis in October 2016 as compared to 3.7% in the previous month and by 2.8% in October 2015. On (MoM) basis, it increased by 0.6% in October 2016 as compared to an increase of 0.1% in the previous month whereas no change was observed in corresponding month of last year i.e. October 2015.
4. SPI inflation on YoY increased by 1.3% in October 2016 as compared to an increase of 1.8% a month earlier and decrease of 0.10 % in October 2015. On MoM basis, it increased by 0.7% in October 2016 as compared to an increase of 0.1% a month earlier and an increase of 1.2% in October, 2015.
5. WPI inflation on YoY basis increased by 2.8% in October 2016 as compared to an increase of 3.4% a month earlier and a decrease of 2.7% in October 2015. WPI inflation on MoM basis decreased by 0.04% in October 2016 as compared to decrease of 0.5% a month earlier and an increase of 0.5% in October 2015.
6. Figures 1 and 2 show graphically the data of Table 1. Table 1.1 shows "Period Average" and "YoY" percent changes in indices of three years.

**Table 1: Inflation (%) (Base 2007-08)**

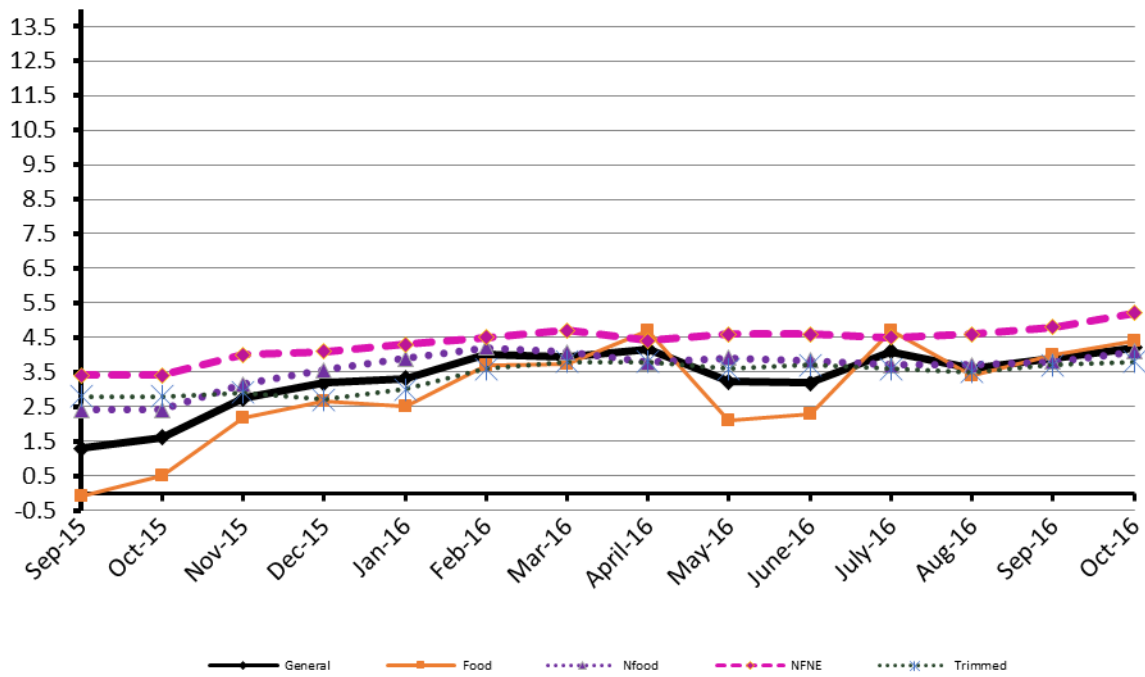
Period	CPI						Core Inflation				SPI**		WPI	
	General		Food		Non-food		NFNE*		Trimmed		YoY	MoM	YoY	MoM
	YoY	MoM	YoY	MoM	YoY	MoM	YoY	MoM	YoY	MoM				
Sep-15	1.3	-0.1	-0.1	-0.4	2.4	0.1	3.4	0.1	2.8	0.1	-1.3	0.5	-3.5	-0.5
Oct 15	1.6	0.5	0.5	0.4	2.4	0.5	3.4	0.0	2.8	0.0	-0.1	1.2	-2.7	0.5
Nov 15	2.7	0.6	2.2	1.2	3.2	0.2	4.0	0.1	2.9	0.2	2.1	1.0	-1.7	0.0
Dec 15	3.2	-0.6	2.7	-1.6	3.6	0.2	4.1	0.2	2.7	0.2	2.9	-0.7	-0.4	-0.6
Jan 16	3.3	0.2	2.5	-0.6	3.9	0.8	4.3	0.9	3.0	0.6	3.1	-0.7	0.1	-0.5
Feb 16	4.0	-0.3	3.7	-0.7	4.2	0.0	4.5	0.2	3.6	0.1	3.6	-0.5	0.6	-0.6
Mar 16	3.9	0.1	3.7	0.5	4.1	-0.1	4.7	0.2	3.8	0.2	3.5	-0.2	0.2	-0.4
April 16	4.2	1.5	4.7	2.4	3.8	1.0	4.4	1.1	3.8	0.6	2.9	-0.1	0.6	1.3
May 16	3.2	-0.2	2.1	-0.7	3.9	0.2	4.6	0.2	3.6	0.2	0.6	-1.0	0.0	0.6
June 16	3.2	0.6	2.3	1.4	3.8	0.1	4.6	0.1	3.7	0.2	0.7	1.1	0.2	1.4
July 16	4.1	1.3	4.7	2.5	3.7	0.5	4.5	0.6	3.6	0.5	1.7	1.3	3.0	2.3
Aug 16	3.6	-0.3	3.4	-0.9	3.7	0.2	4.6	0.2	3.5	0.1	2.2	0.2	3.5	0.0
Sep 16	3.9	0.2	4.0	0.1	3.8	0.2	4.8	0.3	3.7	0.1	1.8	0.1	3.4	-0.5
Oct 16	4.2	0.8	4.4	0.8	4.1	0.8	5.2	0.9	3.8	0.6	1.3	0.7	2.8	-0.0

\*NFNE is non-food non-energy, \*\* SPI for quintile 1. Digits 0.0\* are due to rounding off.

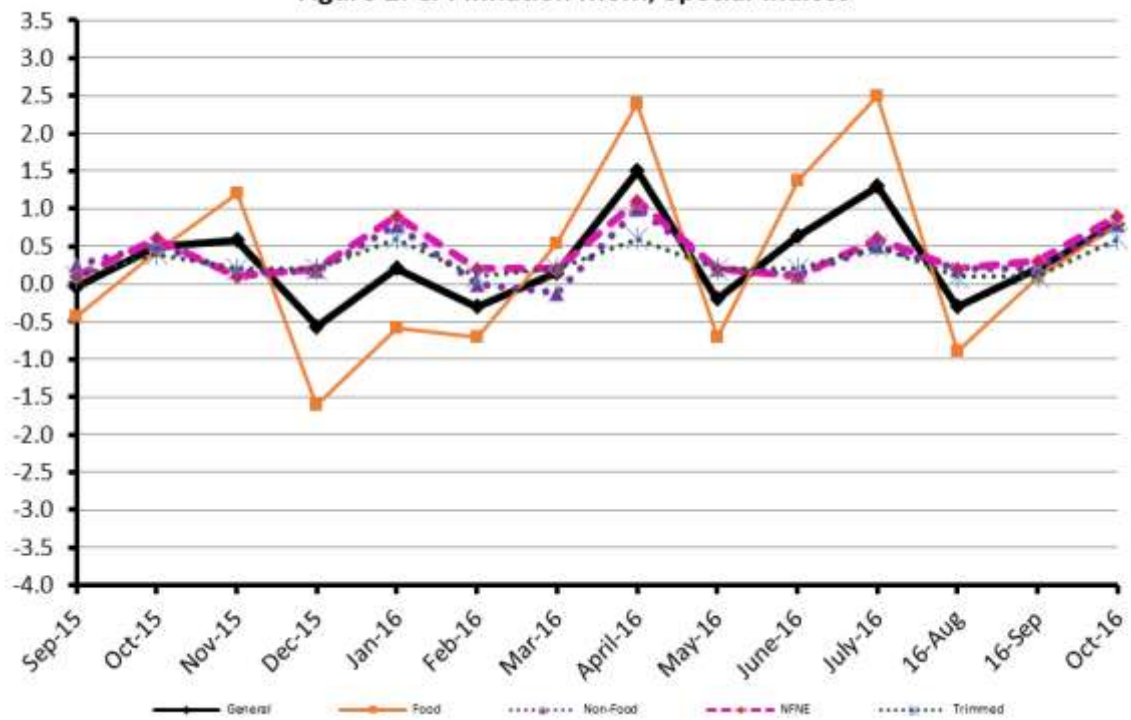
**Table 1.1 : Period Average and YoY % Changes of Indices (Base 2007-08)**

Index	Averages July-October % Changes			October over October % Changes		
	2016-17	2015-16	2014-15	2016	2015	2014
CPI	3.95	1.65	7.09	4.21	1.61	5.82
SPI	1.74	-0.84	5.14	1.29	-0.09	4.12
WPI	3.17	-2.99	3.44	2.80	-2.66	1.27

**Figure 1: CPI Inflation YoY, Special Indices**



**Figure 2: CPI Inflation MoM, Special Indices**



## II. Consumer Price Index (CPI)

The Consumer Price Index of October 2016, has increased by 0.81% over September 2016 and increased by 4.21% over corresponding month of the last year i.e. October 2015.

**Table 2 : Consumer Price Index by Group of Commodities and Services (Base 2007-08)**

No	Group	Group Weight (%)	Indices			% Change October 2016 Over		Impact (In % points) October 2016 Over	
			Oct 2016	Sep 2016	Oct 2015	Sep 2016	Oct 2015	Sep 2016	Oct 2015
	General	100.00	211.57	209.88	203.03	0.81	4.21	0.81	4.21
1.	Food & Non-alcoholic Bev.	34.83	228.30	226.30	220.40	0.88	3.58	0.33	1.36
	<i>Non-perishable Food Items</i>	29.84	224.52	222.87	216.59	0.74	3.66	0.23	1.17
	<i>Perishable Food Items</i>	4.99	250.94	246.80	243.19	1.68	3.19	0.10	0.19
2.	Alcoholic Bev.& Tobacco	1.41	364.39	364.13	309.96	0.07	17.56	0.00	0.38
3.	Clothing & Footwear	7.57	231.18	230.47	221.89	0.31	4.19	0.03	0.35
4.	Housing, Water, Electricity, Gas & Fuels	29.41	191.56	188.90	182.62	1.41	4.90	0.37	1.29
5.	Furnishing & Household Equipment Maintenance	4.21	222.66	222.27	215.49	0.18	3.33	0.01	0.15
6.	Health	2.19	193.78	192.00	179.67	0.93	7.85	0.02	0.15
7.	Transport	7.20	170.40	170.31	175.80	0.05	-3.07	0.00	-0.19
8.	Communication	3.22	131.26	130.88	130.36	0.29	0.69	0.01	0.01
9.	Recreation & Culture	2.02	196.21	196.15	193.55	0.03	1.37	0.00	0.03
10.	Education	3.94	232.15	230.54	209.25	0.70	10.94	0.01	0.44
11.	Restaurants & Hotels	1.23	266.35	266.11	253.30	0.09	5.15	0.00	0.08
12.	Miscellaneous	2.76	237.26	236.99	225.79	0.11	5.08	0.00	0.16

Main contributors to month-on-month and year-on-year percentage changes are given below and detail is given in Annexure A.

- Month-on-month** Top few commodities which varied from previous month are given below:-

**Food Items Increased:** Chicken (20.04%), Fresh Vegetables (6.09%), Wheat (4.42%), Besan (3.68%), Pulse Gram (2.72%), Tomatoes (2.67%), Gram Whole (1.20%), Wheat flour (1.06%), and Dry Fruits (1.01%).

**Decreased:** Onion (7.28%), Eggs (3.27%), Pulse Mash (2.76%), Fresh Fruits (1.96%), Pulse Moong (1.71%), Betel Leaves & Nuts (1.10%), and Beverages (1.08%).

**Non-food Items Increased:** House Rent (2.00%), Medical equipments (1.25%), Household Textiles (1.15%), and Drugs & Medicines (1.04%).

**Decreased:** Sewing needle & Dry Cell (2.41%).

- Year-on-Year:** Top few commodities which varied from previous year i.e. October 2015 are given below:-

**Food Items Increased:** Gram Whole (42.35%), Pulse Gram (33.72%), Besan (30.65%), Chicken (26.04%), Fresh Vegetables (20.5%), Cigarettes (17.64%), Potatoes (17.4%), Sugar (13.39%), Pulse Mash (13.28%), and Betel Leaves and Nuts (10.61%).

**Decreased:** Onion (45.88%), tomatoes (15.44%), Pulse Moong (5.99%) and Tea (3.63%).

**Non-food Items Increased:** Education (10.94%), Doctor (MBBS) Clinic Fee (9.18%), Water Supply (8.98%), Medical Equipments (8.43%), Drugs & Medicines (7.8%), Tailoring (7.05%), House Rent (6.65%), and Personal Equipments (6.49%).

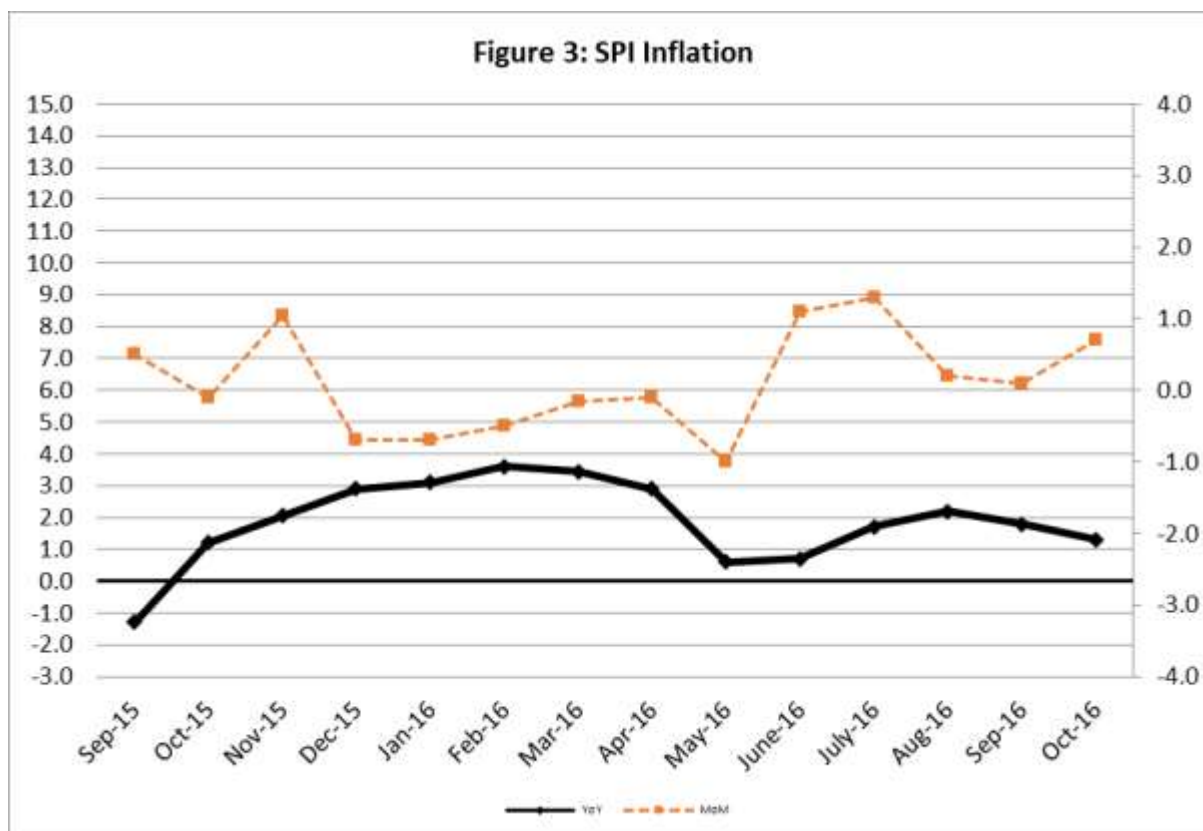
**Decreased:** Motor Fuel (7.55%), Kerosene Oil (6.26%) and Motor Vehicle Accessories (6.18%).

### III. Sensitive Price Indicator

Quintile-wise percentage changes YoY and MoM are given below in Table 3. The series from September 2015 to October 2016 is also graphed below in Figure 3.

Table 3: Sensitive Price Indicator (Base 2007-08)					
Quintiles	Indices			% Change Oct 2016 over	
	Oct 2016	Sep 2016	Oct 2015	Sep 2016	Oct 2015
1	211.71	210.31	209.02	0.67	1.29
2	218.95	219.35	216.02	-0.18	1.36
3	219.81	218.33	216.72	0.68	1.43
4	224.20	222.70	220.94	0.67	1.48
5	220.42	219.03	217.31	0.63	1.43
Combined	220.11	218.67	217.02	0.66	1.42

Table 3.1 Table 3.1 : Weekly Percentage Change of SPI During October-16				
Quintiles	% Change with Previous week			
	6 <sup>th</sup> Oct-2016	13 <sup>th</sup> Oct-2016	20 <sup>th</sup> Oct 2016	27 <sup>th</sup> Oct-2016
Quantile 1	0.33	0.13	0.15	0.15
Combined	0.35	0.14	0.20	0.11



## IV. Wholesale Price Index

The Wholesale Price Index for October, 2016 decreased by 0.04% over September, 2016. It increased by 2.80% over the corresponding month of the last year. YoY and MoM movements, from September, 2015 to October, 2016 are also graphed below in Figure 4.

**Table 4 : Wholesale Price Index by Group of Commodities (Base 2007-08)**

No.	Group	Group Weight (%)	Indices			% Change October, 2016 over		Impact (in %age points) October, 2016 over	
			Oct 2016	Sep 2016	Oct 2015	Sep 2016	Oct 2015	Sep 2016	Oct 2015
	<b>General</b>	<b>100.00</b>	<b>214.53</b>	<b>214.61</b>	<b>208.69</b>	<b>-0.04</b>	<b>2.80</b>	<b>-0.04</b>	<b>2.80</b>
1.	Agriculture, Forestry & Fishery Products	25.77	247.04	246.87	228.36	0.07	8.18	0.02	2.31
2.	Ores & Minerals, Electricity, Gas & Water	12.04	242.01	241.64	246.91	0.15	-1.98	0.02	-0.28
3.	Food Products, Beverages & Tobacco, Textiles, Apparel & Leather Products	31.11	224.34	225.26	211.04	-0.41	6.30	-0.13	1.98
	i. Food Products, Bev. & Tobacco	20.07	237.74	238.26	224.28	-0.22	6.00	-0.05	1.29
	ii. Textiles and Apparel	10.33	200.01	201.78	186.28	-0.88	7.37	-0.09	0.68
	iii. Leather Products	0.71	199.75	199.41	196.88	0.17	1.46	0.00	0.01
4.	Other Transportable Goods except Metal Products, Machinery & Equipment	22.37	165.08	164.47	176.74	0.37	-6.60	0.06	-1.25
5.	Metal Products, Machinery & Equipment	8.72	172.38	172.51	171.31	-0.08	0.62	-0.01	0.04

Main contributors to month-on-month and year-on-year percentage changes are given below and detail is given in Annexure B.

1. **Month-on-Month** Top few commodities which varied from previous month i.e. September, 2016 are given below:-

**Increased:** Poultry (18.73%), Lathe Machines (8.76%), Sugar Confectionary (7.84%), Furnace Oil (5.85%), Other Cereal Flour (2.69%), Sugar Crops (2.64%), Woven Fabrics (2.42%) and Other Oil Seeds (2.35%).

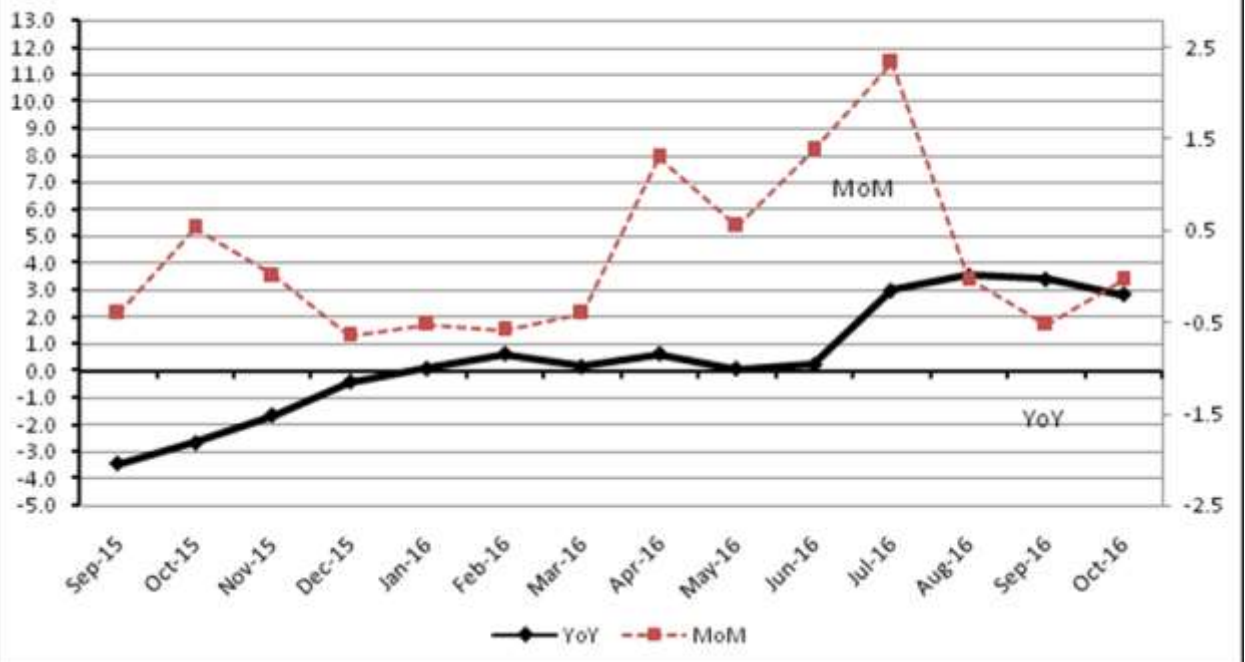
**Decreased:** Hides & Fur Skins (14.05%), Cultivators (13.24%), Bajra (13.01%), Stimulant & Spice Crops (9.56%), Eggs (6.96%), Maize (3.12%) and Sugar (2.51%), Potatoes (2.34%), Jowar (2.29%) and Nylon Yarn (2.10%).

2. **Year-on-year** Top few commodities which varied from previous year i.e. October, 2015 are given below:-

**Increased:** Woolen Carpets (48.65%), Other Cereal Flour (39.54%), Potatoes (36.08%), Fish (34.12%), Poultry (29.47%), Pulses (26.99%), Other Glass Articles (22.76%), Glass Sheets (22.11%), Tobacco Products (22.05%), Lathe Machines (15.44%), Medicines (14.89%), Unmanufactured Tobacco (13.94%), Fiber Crops (13.52%), Cotton Yarn (12.98%) and Sugar (12.31%).

**Decreased:** Kerosene Oil (24.33%), Stimulant & Spice Crops (23.09%), Hides & Fur Skins (21.43%), Coal (20.41%), Fertilizers (19.15%), Diesel Oil (15.15%), Cultivators (13.24%) and Motor spirit (12.88%).

Figure 4: WPI Inflation





**Annexure A: Consumer Price Index Numbers by Commodity Groups & Commodities (2007-08=100)**

Item and Specification	Weight	Index Numbers			% Change in Oct 2016 over	
		Oct 16	Sep 16	Oct 15	Sep 2016	Oct 2015
<b>General</b>	<b>100.0000</b>	<b>211.57</b>	<b>209.88</b>	<b>203.03</b>	<b>+ 0.81</b>	<b>+ 4.21</b>
<b>Food and non-alcoholic Bevera</b>	<b>34.8343</b>	<b>228.30</b>	<b>226.30</b>	<b>220.40</b>	<b>+ 0.88</b>	<b>+ 3.58</b>
01 Wheat	0.3477	202.60	194.03	200.07	+ 4.42	+ 1.26
02 Wheat Flour	4.1648	211.25	209.04	213.10	+ 1.06	- 0.87
03 Wheat Product	0.0959	217.29	216.37	214.59	+ 0.43	+ 1.26
04 Besan	0.1500	327.42	315.81	250.61	+ 3.68	+ 30.65
05 Rice	1.5821	160.67	160.52	164.50	+ 0.09	- 2.33
06 Cereals	0.1563	250.57	250.17	244.03	+ 0.16	+ 2.68
07 Bakery & Confectionary	1.1550	215.50	215.16	209.83	+ 0.16	+ 2.70
08 Nimco	0.4574	249.01	248.88	241.54	+ 0.05	+ 3.09
09 Meat	2.4303	264.87	264.07	255.19	+ 0.30	+ 3.79
10 Chicken	1.3596	181.47	151.17	143.98	+ 20.04	+ 26.04
11 Fish	0.2970	216.30	216.97	214.66	- 0.31	+ 0.76
12 Milk Fresh	6.6800	266.40	266.39	256.89	+ 0.00	+ 3.70
13 Milk Products	0.6338	256.84	256.76	248.48	+ 0.03	+ 3.36
14 Milk Powder	0.1129	237.25	237.04	230.26	+ 0.09	+ 3.04
15 Eggs	0.4555	196.35	202.98	181.97	- 3.27	+ 7.90
16 Mustard Oil	0.0952	153.72	153.83	154.04	- 0.07	- 0.21
17 Cooking Oil	1.7538	133.71	133.69	135.21	+ 0.01	- 1.11
18 Vegetable Ghee	2.0714	138.08	137.89	137.08	+ 0.14	+ 0.73
19 Dry Fruits	0.2543	261.23	258.62	252.42	+ 1.01	+ 3.49
20 Fresh Fruits	1.8649	229.34	233.93	217.91	- 1.96	+ 5.25
21 Pulse Masoor	0.2712	211.56	212.10	199.45	- 0.25	+ 6.07
22 Pulse Moong	0.2336	282.92	287.84	300.95	- 1.71	- 5.99
23 Pulse Mash (Washed)	0.2098	349.16	359.08	308.24	- 2.76	+ 13.28
24 Pulse Gram	0.2361	351.48	342.16	262.84	+ 2.72	+ 33.72
25 Gram Whole	0.1616	305.15	301.53	214.37	+ 1.20	+ 42.35
26 Beans	0.0269	232.30	233.29	233.73	- 0.42	- 0.61
27 Potatoes	0.4452	243.97	245.55	207.81	- 0.64	+ 17.40
28 Onion	0.5093	176.57	190.44	326.26	- 7.28	- 45.88
29 Tomatoes	0.4172	197.51	192.38	233.56	+ 2.67	- 15.44
30 Fresh Vegetables	1.7543	309.96	292.17	257.22	+ 6.09	+ 20.50
31 Sugar	1.0445	250.89	253.32	221.27	- 0.96	+ 13.39
32 Gur	0.0220	291.45	291.67	291.22	- 0.08	+ 0.08
33 Honey	0.0446	314.49	316.91	304.38	- 0.76	+ 3.32
34 SweetMeat	0.2483	245.36	244.89	238.40	+ 0.19	+ 2.92
35 Beverages	1.1990	219.47	221.86	217.86	- 1.08	+ 0.74
36 Jam, Tomato Ketchup & Pickles	0.2454	215.72	215.46	211.33	+ 0.12	+ 2.08
37 Condiments	0.2656	263.47	262.69	258.82	+ 0.30	+ 1.80
38 Spices	0.5441	239.79	241.44	237.30	- 0.68	+ 1.05
39 Tea	0.8377	255.49	255.71	265.12	- 0.09	- 3.63
<b>Alcoholic Beverages, Tobacco</b>	<b>1.4135</b>	<b>364.39</b>	<b>364.13</b>	<b>309.96</b>	<b>+ 0.07</b>	<b>+ 17.56</b>
40 Cigarettes	1.3906	366.41	366.11	311.47	+ 0.08	+ 17.64
41 Betel Leaves & Nuts	0.0229	241.62	244.31	218.45	- 1.10	+ 10.61
<b>Clothing and footwear</b>	<b>7.5708</b>	<b>231.18</b>	<b>230.47</b>	<b>221.89</b>	<b>+ 0.31</b>	<b>+ 4.19</b>
42 Cotton Cloth	1.7286	225.34	225.04	215.33	+ 0.13	+ 4.65
43 Woolen Cloth	0.8759	247.41	245.97	236.95	+ 0.59	+ 4.41
44 Readymade Garments	0.9739	237.88	236.67	226.37	+ 0.51	+ 5.08
45 Woolen Readymade Garments	0.3964	253.35	253.26	245.98	+ 0.04	+ 3.00
46 Hosiery	0.5094	243.74	242.93	235.05	+ 0.33	+ 3.70
47 Dopatta	0.4412	241.74	241.02	234.91	+ 0.30	+ 2.91
48 Cleaning and Laundry	0.2110	256.52	255.44	245.70	+ 0.42	+ 4.40
49 Tailoring	0.8840	303.96	302.43	283.94	+ 0.51	+ 7.05
50 Footwear	1.5504	166.58	166.49	165.10	+ 0.05	+ 0.90

**Annexure A: Consumer Price Index Numbers by Commodity Groups & Commodities (2007-08=100)**

Item and Specification	Weight	Index Numbers			% Change in Oct 2016 over			
		Oct 16	Sep 16	Oct 15	Sep 2016	Oct 2015		
<b>Housing, water, Elec., Gas an</b>	<b>29.4149</b>	<b>191.56</b>	<b>188.90</b>	<b>182.62</b>	<b>+</b>	<b>1.41</b>	<b>+</b>	<b>4.90</b>
51 House Rent	21.8149	182.22	178.64	170.85	+	2.00	+	6.65
52 Construction Input Items	0.5623	247.86	247.89	241.36	-	0.01	+	2.69
53 Construction Wage Rates	0.3331	230.48	230.40	220.31	+	0.03	+	4.62
54 Water Supply	0.4971	163.38	163.32	149.92	+	0.04	+	8.98
55 Electricity	4.3985	238.10	238.10	238.10	+	0.00	+	0.00
56 Gas	1.5756	158.08	158.08	158.08	+	0.00	+	0.00
57 Kerosene Oil	0.0057	195.65	195.07	208.72	+	0.30	-	6.26
58 Firewood Whole	0.2277	284.35	283.60	278.99	+	0.26	+	1.92
<b>Furnishing and household equi</b>	<b>4.2082</b>	<b>222.66</b>	<b>222.27</b>	<b>215.49</b>	<b>+</b>	<b>0.18</b>	<b>+</b>	<b>3.33</b>
59 Furniture	0.3315	212.40	212.26	206.70	+	0.07	+	2.76
60 Household Textiles	0.6489	223.69	221.14	213.29	+	1.15	+	4.88
61 Household Equipment	0.5936	179.23	179.16	175.73	+	0.04	+	1.99
62 Utensils	0.3212	224.01	223.08	218.25	+	0.42	+	2.64
63 Plastic Products	0.2547	207.19	207.17	204.85	+	0.01	+	1.14
64 Washing Soaps & Detergents	0.7893	229.21	228.76	225.68	+	0.20	+	1.56
65 Sewing Needle & Dr Cell	0.1496	201.34	206.32	200.81	-	2.41	+	0.26
66 Household Servant	1.0432	249.98	249.98	237.20	+	0.00	+	5.39
67 Marriage Hall Charges	0.0762	243.15	242.89	232.49	+	0.11	+	4.59
<b>Health</b>	<b>2.1868</b>	<b>193.78</b>	<b>192.00</b>	<b>179.67</b>	<b>+</b>	<b>0.93</b>	<b>+</b>	<b>7.85</b>
68 Drugs & Medicines	1.2667	160.65	159.00	149.02	+	1.04	+	7.80
69 Medical Equipments	0.0080	245.33	242.29	226.26	+	1.25	+	8.43
70 Doctor (MBBS) Clinic Fee	0.5904	266.89	264.28	244.44	+	0.99	+	9.18
71 Medical Tests	0.3217	188.77	188.05	180.37	+	0.38	+	4.66
<b>Transport</b>	<b>7.2023</b>	<b>170.40</b>	<b>170.31</b>	<b>175.80</b>	<b>+</b>	<b>0.05</b>	<b>-</b>	<b>3.07</b>
72 Motor Vehicles	0.6630	170.94	171.00	163.02	-	0.04	+	4.86
73 Motor Vehicle Accessories	0.2439	213.17	213.67	227.21	-	0.23	-	6.18
74 Motor Fuel	3.0269	136.36	136.01	147.50	+	0.26	-	7.55
75 Mechanical Service	0.4552	227.63	227.40	218.85	+	0.10	+	4.01
76 Motor Vehicle Tax	0.1099	210.18	210.18	210.18	+	0.00	+	0.00
77 Transport Services	2.7034	193.28	193.40	197.35	-	0.06	-	2.06
<b>Communication</b>	<b>3.2198</b>	<b>131.26</b>	<b>130.88</b>	<b>130.36</b>	<b>+</b>	<b>0.29</b>	<b>+</b>	<b>0.69</b>
78 Postal Services	0.0662	243.32	242.74	229.93	+	0.24	+	5.82
79 Communication & Apparatus	3.1536	128.91	128.53	128.27	+	0.30	+	0.50
<b>Recreation and culture</b>	<b>2.0227</b>	<b>196.21</b>	<b>196.15</b>	<b>193.55</b>	<b>+</b>	<b>0.03</b>	<b>+</b>	<b>1.37</b>
80 Recreation & Culture	0.8634	129.89	129.68	128.26	+	0.16	+	1.27
81 Text Books	0.5706	292.41	292.41	290.62	+	0.00	+	0.62
82 Newspapers	0.1934	175.49	175.49	175.42	+	0.00	+	0.04
83 Stationery	0.3953	212.35	212.50	204.88	-	0.07	+	3.65
<b>Education</b>	<b>3.9431</b>	<b>232.15</b>	<b>230.54</b>	<b>209.25</b>	<b>+</b>	<b>0.70</b>	<b>+</b>	<b>10.94</b>
84 Education	3.9431	232.15	230.54	209.25	+	0.70	+	10.94
<b>Restaurants and hotels</b>	<b>1.2286</b>	<b>266.35</b>	<b>266.11</b>	<b>253.30</b>	<b>+</b>	<b>0.09</b>	<b>+</b>	<b>5.15</b>
85 Readymade Food	1.2286	266.35	266.11	253.30	+	0.09	+	5.15
<b>Misc. goods and services</b>	<b>2.7550</b>	<b>237.26</b>	<b>236.99</b>	<b>225.79</b>	<b>+</b>	<b>0.11</b>	<b>+</b>	<b>5.08</b>
86 Personal Care	1.4935	218.58	217.90	209.29	+	0.31	+	4.44
87 Cosmetics	0.3853	200.19	199.36	193.11	+	0.42	+	3.67
88 Blades	0.0322	195.43	195.16	190.75	+	0.14	+	2.45
89 Personal Equipments	0.8440	288.83	289.57	271.23	-	0.26	+	6.49

## Annexure B: Wholesale Price Indices by Major Groups &amp; Commodities

(2007-08=100)

Item and Specification	Weight	Index Numbers			% Change in Oct 2016 over		
		Oct 16	Sep 16	Oct 15	Sep 2016	Oct 2015	
<b>General</b>	<b>100.0000</b>	<b>214.53</b>	<b>214.61</b>	<b>208.69</b>	-	<b>0.04</b>	+ <b>2.80</b>
<b>Agriculture Forestry &amp; Fisher</b>	<b>25.7674</b>	<b>247.04</b>	<b>246.87</b>	<b>228.36</b>	+	<b>0.07</b>	+ <b>8.18</b>
001 Wheat	0.6297	209.05	205.26	209.37	+	1.85	- 0.15
002 Maize	0.6764	190.54	196.67	191.32	-	3.12	- 0.41
003 Rice	2.4413	147.78	149.55	150.22	-	1.18	- 1.62
004 Sorghum / Jowar	0.0214	258.01	264.05	293.25	-	2.29	- 12.02
005 Millet / Bajra	0.0374	182.73	210.05	200.68	-	13.01	- 8.94
006 Vegetables	1.2441	348.51	354.30	331.56	-	1.63	+ 5.11
007 Fresh Fruits	1.5144	248.10	248.15	253.80	-	0.02	- 2.25
008 Dry Fruits	0.2478	244.62	241.88	238.92	+	1.13	+ 2.39
009 Cotton Seeds	1.1511	255.71	260.92	243.34	-	2.00	+ 5.08
010 Other Oil Seeds	0.0722	174.88	170.86	162.75	+	2.35	+ 7.45
011 Edible Roots / Potatoes	0.2540	250.44	256.45	184.04	-	2.34	+ 36.08
012 Stimulant & Spice Crops	0.1634	235.64	260.56	306.38	-	9.56	- 23.09
013 Pulses	0.4901	309.70	304.53	243.87	+	1.70	+ 26.99
014 Sugar Crops	1.0725	293.89	286.34	286.29	+	2.64	+ 2.65
015 Fibre Crops	5.3169	195.52	195.33	172.23	+	0.10	+ 13.52
016 Unmanufactured Tobacco	0.0742	260.21	255.73	228.38	+	1.75	+ 13.94
017 Poultry	0.5633	190.04	160.06	146.78	+	18.73	+ 29.47
018 Raw Milk from Bovine Animals	7.0279	265.22	262.97	254.04	+	0.86	+ 4.40
019 Eggs	0.5034	196.73	211.44	193.56	-	6.96	+ 1.64
020 Raw Animal Materials / Wool	0.0351	173.89	173.89	173.66	+	0.00	+ 0.13
021 Hides & Fur Skins, Raw	0.4834	122.45	142.47	155.85	-	14.05	- 21.43
022 Fuel Wood in Logs	0.0179	264.77	264.77	263.57	+	0.00	+ 0.46
023 Fish Live Fresh or Chilled	1.7295	455.08	453.85	339.32	+	0.27	+ 34.12
<b>Ores/Minerals, Elec., Gas &amp; W</b>	<b>12.0389</b>	<b>242.01</b>	<b>241.64</b>	<b>246.91</b>	+	<b>0.15</b>	- <b>1.98</b>
024 Coal not Agglomerated	0.7508	152.94	152.94	192.16	+	0.00	- 20.41
025 Natural Gas Liquified	5.7385	209.52	208.75	209.82	+	0.37	- 0.14
026 Salt & Pure Sodium Chloride	0.0584	254.33	254.33	252.31	+	0.00	+ 0.80
027 Electrical Energy	5.4912	288.00	288.00	293.09	+	0.00	- 1.74
<b>Food, Beverages, Tobacco, Textil</b>	<b>31.1122</b>	<b>224.34</b>	<b>225.26</b>	<b>211.04</b>	-	<b>0.41</b>	+ <b>6.30</b>
<b>Food Products, Beverages &amp;</b>	<b>20.0718</b>	<b>237.74</b>	<b>238.26</b>	<b>224.28</b>	-	<b>0.22</b>	+ <b>6.00</b>
028 Meat of Animals	3.4559	279.82	279.82	266.98	+	0.00	+ 4.81
029 Vegetables & Fruit Juice	0.0058	209.83	209.83	200.95	+	0.00	+ 4.42
030 Dried Fruits & Nuts	0.1733	240.98	238.61	230.84	+	0.99	+ 4.39
031 Fruit Juices	0.3880	183.53	183.49	177.53	+	0.02	+ 3.38
032 Vegetable Oils Refined	1.9242	151.00	151.63	150.19	-	0.42	+ 0.54
033 Vegetable Ghee	1.5632	123.35	123.32	118.43	+	0.02	+ 4.15
034 Oil Cakes	0.9611	226.38	231.01	202.18	-	2.00	+ 11.97
035 Processed Liquid Milk	4.4437	257.57	257.57	247.18	+	0.00	+ 4.20
036 Milk & Cream in Solid Form	0.0316	220.59	221.24	216.39	-	0.29	+ 1.94
037 Ice Cream	0.0047	238.04	238.04	219.91	+	0.00	+ 8.24
038 Dairy Products N.E.C	0.0117	249.21	248.76	244.60	+	0.18	+ 1.88
039 Wheat Flour	2.3034	194.90	192.40	197.66	+	1.30	- 1.40
040 Other Cereal Flour	0.0604	307.94	299.87	220.69	+	2.69	+ 39.54
041 Sugar Refined	1.7975	262.43	269.18	233.67	-	2.51	+ 12.31
042 Chocolate	0.0139	99.45	99.45	101.06	+	0.00	- 1.59
043 Sugar Confectionary	0.0738	128.15	118.83	118.83	+	7.84	+ 7.84
044 Coffee & Tea	0.7303	230.56	230.56	246.32	+	0.00	- 6.40
045 Spices	0.1449	190.17	190.12	188.53	+	0.03	+ 0.87
046 Other Food Products	0.0336	293.85	293.85	292.02	+	0.00	+ 0.63
047 Mineral Water	0.0207	197.57	197.57	188.35	+	0.00	+ 4.90
048 Beverages	0.6303	172.33	172.44	171.95	-	0.06	+ 0.22
049 Tobacco Products	1.2998	435.03	435.03	356.45	+	0.00	+ 22.05
<b>Textiles &amp; Apparels</b>	<b>10.3289</b>	<b>200.01</b>	<b>201.78</b>	<b>186.28</b>	-	<b>0.88</b>	+ <b>7.37</b>
050 Cotton Yarn	5.2491	191.17	194.81	169.21	-	1.87	+ 12.98
051 Nylon Yarn	0.1719	143.99	147.08	147.08	-	2.10	- 2.10
052 Blended Yarn	0.1689	179.64	179.64	183.55	+	0.00	- 2.13
053 Woven Fabrics	0.0128	286.46	279.69	265.37	+	2.42	+ 7.95
054 Cotton Fabrics	0.6343	209.09	209.09	201.65	+	0.00	+ 3.69
055 Other Fabrics	1.1016	224.29	224.29	217.95	+	0.00	+ 2.91
056 Silk & Reyon Fabrics	0.7350	190.96	190.96	186.80	+	0.00	+ 2.23
057 Towels	0.1235	267.20	267.20	267.20	+	0.00	+ 0.00

## Annexure B: Wholesale Price Indices by Major Groups &amp; Commodities

(2007-08=100)

Item and Specification	Weight	Index Numbers			% Change in Oct 2016 over	
		Oct 16	Sep 16	Oct 15	Sep 2016	Oct 2015
058 Blankets	0.0029	247.38	243.93	235.86	+ 1.41	+ 4.88
059 Bed Sheets	0.0913	257.96	256.29	256.29	+ 0.65	+ 0.65
060 Quilts	0.0019	199.16	198.00	196.84	+ 0.59	+ 1.18
061 Woolen Carpets	0.0383	196.43	196.43	132.14	+ 0.00	+ 48.65
062 Synthetic Carpets	0.0566	129.25	129.25	126.27	+ 0.00	+ 2.36
063 Hosiery Products	0.8832	225.43	224.11	222.88	+ 0.59	+ 1.14
064 Readymade Garments	1.0576	200.44	200.55	193.27	- 0.05	+ 3.71
<b>Leather Products</b>	<b>0.7115</b>	<b>199.75</b>	<b>199.41</b>	<b>196.88</b>	<b>+ 0.17</b>	<b>+ 1.46</b>
065 Leather Without Hair	0.2973	221.97	221.97	221.97	+ 0.00	+ 0.00
066 Other Leather N.E.C	0.2567	207.31	207.31	206.27	+ 0.00	+ 0.50
067 Footwears	0.1575	145.51	143.97	134.22	+ 1.07	+ 8.41
<b>Other Transportable Goods</b>	<b>22.3659</b>	<b>165.08</b>	<b>164.47</b>	<b>176.74</b>	<b>+ 0.37</b>	<b>- 6.60</b>
068 Timber	0.0165	224.68	220.36	213.18	+ 1.96	+ 5.39
069 Printing Paper	0.4279	164.90	164.90	164.56	+ 0.00	+ 0.21
070 Hard Board	0.1579	197.92	197.92	197.92	+ 0.00	+ 0.00
071 Coke	0.2797	163.45	163.45	163.45	+ 0.00	+ 0.00
072 Motor Spirit	1.5336	108.54	108.54	124.58	+ 0.00	- 12.88
073 Diesel Oil	5.2664	144.34	144.34	170.11	+ 0.00	- 15.15
074 Kerosine Oil	0.2151	115.11	115.11	152.12	+ 0.00	- 24.33
075 Furnace Oil	3.2664	85.40	80.68	79.32	+ 5.85	+ 7.67
076 Mobil Oil	0.7114	195.35	196.00	199.78	- 0.33	- 2.22
077 Chemicals	1.7720	177.41	177.38	186.09	+ 0.02	- 4.66
078 Dyeing Material	0.1539	146.55	146.55	146.55	+ 0.00	+ 0.00
079 Fertilizers	2.8657	221.56	224.61	274.03	- 1.36	- 19.15
080 Pesticides	0.2763	308.79	308.79	312.37	+ 0.00	- 1.15
081 Insecticides	0.1276	135.58	135.58	138.59	+ 0.00	- 2.17
082 Paints & Varnishes	0.1916	295.36	295.36	295.36	+ 0.00	+ 0.00
083 Medicines	1.1428	168.17	168.09	146.38	+ 0.05	+ 14.89
084 Soaps & Detergents	0.8168	187.54	186.25	180.67	+ 0.69	+ 3.80
085 Auto Tyres	0.2703	181.83	181.25	192.83	+ 0.32	- 5.70
086 Plastic Products	0.4550	228.35	228.35	231.05	+ 0.00	- 1.17
087 Glass sheets	0.2089	282.43	247.94	231.30	+ 13.91	+ 22.11
088 Other Glass Articles	0.1635	299.07	299.07	243.63	+ 0.00	+ 22.76
089 Ceramics & Sanitary Fixture	0.0244	233.48	233.48	227.13	+ 0.00	+ 2.80
090 Bricks, Blocks & Tiles	0.1566	218.83	218.21	216.83	+ 0.28	+ 0.92
091 Cement	1.8145	212.72	213.44	206.70	- 0.34	+ 2.91
092 Bed Foam	0.0006	160.50	160.50	156.67	+ 0.00	+ 2.44
093 Matches	0.0505	162.62	162.62	162.62	+ 0.00	+ 0.00
<b>Metal Product, Machinery &amp; Eq</b>	<b>8.7156</b>	<b>172.38</b>	<b>172.51</b>	<b>171.31</b>	<b>- 0.08</b>	<b>+ 0.62</b>
094 Pig Iron	0.0593	128.97	128.97	128.97	+ 0.00	+ 0.00
095 Steel Bar & Sheets	1.4022	120.20	120.46	129.32	- 0.22	- 7.05
096 Pipe Fittings	0.0780	193.63	193.63	192.08	+ 0.00	+ 0.81
097 Steel Products	0.3879	177.06	176.99	173.54	+ 0.04	+ 2.03
098 Engines & Motors	0.0046	109.24	109.24	109.07	+ 0.00	+ 0.16
099 Vacuum Pumps	0.0155	114.95	114.95	115.39	+ 0.00	- 0.38
100 Air Conditioners	0.0049	201.18	201.18	200.18	+ 0.00	+ 0.50
101 Cultivators	0.0551	190.66	219.76	219.76	- 13.24	- 13.24
102 Chuff Cutter	0.1293	149.20	149.20	149.20	+ 0.00	+ 0.00
103 Tractors	0.0028	201.75	203.68	205.43	- 0.95	- 1.79
104 Lathe Machines	0.0525	241.06	221.65	208.81	+ 8.76	+ 15.44
105 Concrete Mixture	0.0107	138.83	138.83	138.83	+ 0.00	+ 0.00
106 Fridge, WashM, SewM, Fans, Iron	1.1645	204.00	204.03	200.25	- 0.01	+ 1.87
107 Electric Wires	0.0912	195.19	195.19	195.19	+ 0.00	+ 0.00
108 Lighting Equipments	1.4431	171.92	172.03	167.30	- 0.06	+ 2.76
109 Radio & Television	0.1843	140.42	140.42	126.49	+ 0.00	+ 11.01
110 Motor Vehicles	0.0244	191.39	191.39	183.03	+ 0.00	+ 4.57
111 Motorcycles	0.2570	125.89	125.89	125.89	+ 0.00	+ 0.00
112 Bicycles	3.3483	187.65	187.65	185.63	+ 0.00	+ 1.09