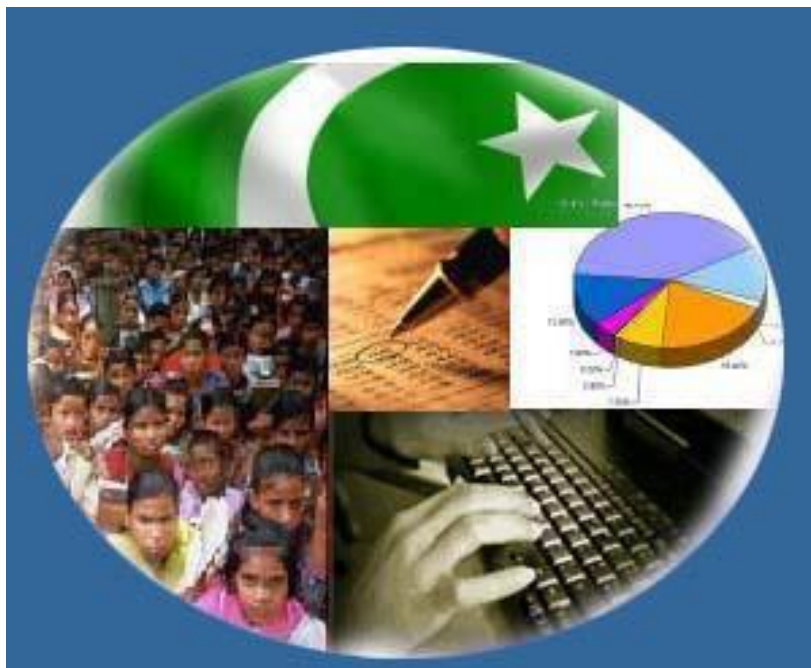




Monthly Review on Price Indices



December, 2015
(Base 2007-08)

Government of Pakistan
Statistics Division
Pakistan Bureau of Statistics
Islamabad

Inflation in Brief

1. CPI inflation, General increased by 3.2% on year-on-year basis in December 2015 as compared to an increase 2.7% in the previous month and 4.3% in December 2014. On month-on-month basis, it decreased by 0.6% in December 2015 as compared to increase of 0.6% in the previous month and decrease of 1.0% in December 2014.
2. Core inflation measured by non-food non-energy CPI (Core NFNE) increased by 4.1% on (YoY) basis in December 2015 as compared to increase 4.0% in the previous month and 6.7% in December 2014. On (MoM) basis, it increased by 0.2% in December 2015 as compared to increase of 0.1% in the previous month and 0.1% in December 2014.
3. Core inflation, measured by 20% weighted trimmed mean CPI (Core Trimmed) increased by 2.7% on (YoY) basis in December 2015 as compared to 2.9% in the previous month and by 5.2% in December 2014. On (MoM) basis, it increased by 0.2% in December 2015 as compared to increase of 0.2% in the previous month and no change in December 2014.
4. SPI inflation on YoY increased by 2.9% in December 2015 as compared to increase of 2.1% a month earlier and an increase of 0.8% in December 2014. On MoM basis, it decreased by 0.7% in December 2015 as compared to a increase of 1.0% a month earlier and decrease of 1.5% in December 2014.
5. WPI inflation on YoY basis decreased by 0.4% in December 2015 as compared to decrease of 1.7% a month earlier and a decrease of 0.9% in December 2014. WPI inflation on MoM basis decreased by 0.7% in December 2015 as compared to increase of 0.01% a month earlier and decrease of 1.9% in December 2014.
6. Figures 1 and 2 show graphically the data of Table 1. Table 1.1 shows "Period Average" and "YoY" percent changes in indices of three years.

Table 1: Inflation (%) (Base 2007-08)

Period	CPI						Core Inflation				SPI**		WPI	
	General		Food		Non-food		NFNE*		Trimmed		YoY	MoM	YoY	MoM
	YoY	MoM	YoY	MoM	YoY	MoM	YoY	MoM	YoY	MoM				
Nov 14	4.0	-0.5	2.1	-0.4	5.4	-0.6	6.9	-0.5	5.3	0.1	-0.3	-1.1	0.0 ²	-1.0
Dec 14	4.3	-1.0	3.4	-2.1	4.9	-0.2	6.7	0.1	5.2	0.0	0.8	-1.5	-0.9	-1.9
Jan 15	3.9	0.1	3.0	-0.5	4.5	0.5	6.4	0.7	4.8	0.3	1.1	-0.9	-2.4	-1.0
Feb 15	3.2	-0.9	2.1	-1.8	4.0	-0.3	6.2	0.0	4.2	-0.2	0.2	-1.0	-3.4	-1.1
Mar 15	2.5	0.2	0.5	0.5	3.9	0.0	5.9	0.1	3.8	0.0	-1.9	0.0	-3.7	0.0 ³
Apr 15	2.1	1.3	0.0	1.4	3.7	1.3	5.4	1.4	3.1	0.6	-1.6	0.4	-2.9	0.9
May 15	3.2	0.8	3.0	1.8	3.3	0.0	4.9	0.0	3.9	0.1	1.2	1.3	-1.8	1.1
Jun-15	3.2	0.6	3.2	1.2	3.2	0.2	4.6	0.1	3.8	0.2	1.1	1.0	-2.0	1.2
Jul-15	1.9	0.4	0.6	0.1	2.8	0.6	4.1	0.6	2.9	0.5	-0.5	0.3	-2.9	-0.4
Aug-15	1.8	0.2	0.4	0.3	2.8	0.2	4.0	0.1	2.8	0.1	-1.5	-0.2	-2.9	-0.5
Sep-15	1.3	-0.1	-0.1	-0.4	2.4	0.1	3.4	0.1	2.8	0.1	-1.3	0.5	-3.5	-0.4
Oct 15	1.6	0.5	0.5	0.4	2.4	0.5	3.4	0.6	2.8	0.4	-0.1	1.2	-2.7	0.5
Nov 15	2.7	0.6	2.2	1.2	3.2	0.2	4.0	0.1	2.9	0.2	2.1	1.0	-1.7	0.0 ⁴
Dec 15	3.2	-0.6	2.7	-1.6	3.6	0.2	4.1	0.2	2.7	0.2	2.9	-0.7	-0.4	-0.7

*NFNE is non-food non-energy, ** SPI for quintile 1 ¹ Actual figure is -0.03, displayed in rounded figure

²Actual figure is 0.01, ³Actual figure is 0.01 displayed in rounded figure, ⁴Actual figure is 0.01 displayed in rounded figure

Table 1.1 : Period Average and YoY % Changes of Indices (Base 2007-08)

Index	Averages July-Dec % Changes			Dec over Dec % Changes		
	2015-16	2014-15	2013-14	2015-16	2014-15	2013-14
CPI	2.08	6.08	8.89	3.19	4.30	9.18
SPI	0.26	3.47	10.74	2.91	0.77	11.12
WPI	-2.35	2.13	8.76	-0.42	-0.89	8.88

Figure 1: CPI Inflation YoY, Special Indices

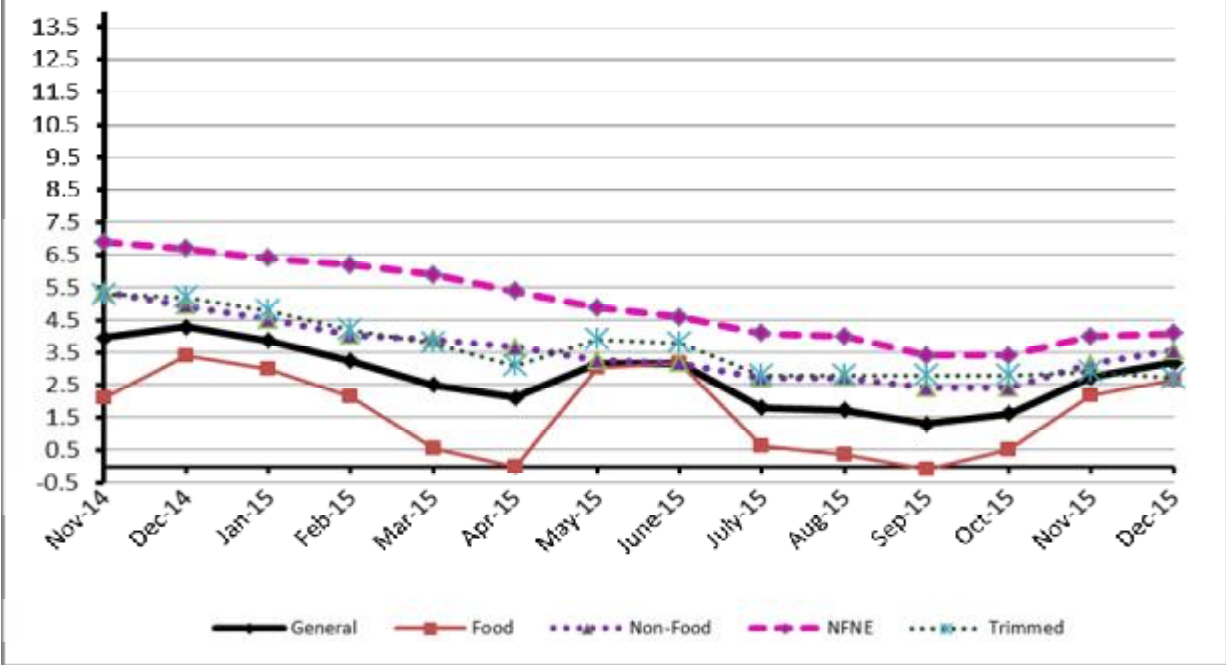
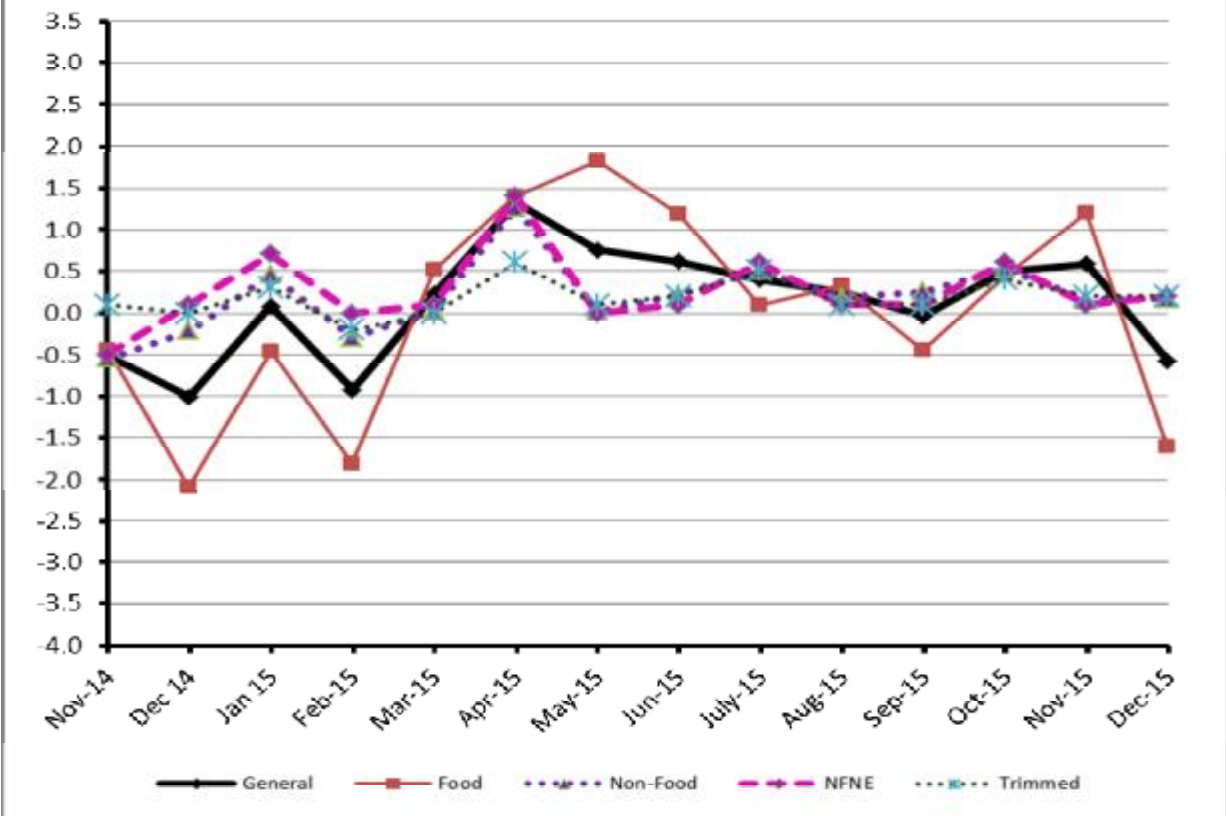


Figure 2: CPI Inflation MoM, Special Indices



II. Consumer Price Index (CPI)

The Consumer Price Index of December, 2015 has decreased by 0.57% over November 2015 and increased by 3.19% over corresponding month of the last year, i.e. December 2014.

Table 2 : Consumer Price Index by Group of Commodities and Services (Base 2007-08)

No	Group	Group Weight (%)	Indices			% Change Dec 2015 Over		Impact (In % points) Dec 2015 Over	
			Dec 2015	Nov 2015	Dec 2014	Nov 2015	Dec 2014	Nov 2015	Dec 2014
	General	100.00	203.06	204.22	196.79	-0.57	3.19	-0.57	3.19
1.	Food & Non-alcoholic Bev.	34.83	218.28	223.17	215.18	-2.19	1.44	-0.83	0.55
	<i>Non-perishable Food Items</i>	<i>29.84</i>	<i>219.67</i>	<i>218.60</i>	<i>217.02</i>	<i>0.49</i>	<i>1.22</i>	<i>0.16</i>	<i>0.40</i>
	<i>Perishable Food Items</i>	<i>4.99</i>	<i>209.95</i>	<i>250.51</i>	<i>204.22</i>	<i>-16.19</i>	<i>2.81</i>	<i>-0.99</i>	<i>0.15</i>
2.	Alcoholic Bev.& Tobacco	1.41	334.66	312.26	266.63	7.17	25.51	0.16	0.49
3.	Clothing & Footwear	7.57	223.65	222.75	213.88	0.40	4.57	0.03	0.38
4.	Housing, Water, Electricity, Gas & Fuels	29.41	182.69	182.66	174.04	0.02	4.97	0.00	1.29
5.	Furnishing & Household Equipment Maintenance	4.21	216.78	215.78	208.80	0.46	3.82	0.02	0.17
6.	Health	2.19	180.83	180.59	176.31	0.13	2.56	0.00	0.05
7.	Transport	7.20	177.69	177.09	185.17	0.34	-4.04	0.02	-0.27
8.	Communication	3.22	130.56	130.39	130.13	0.13	0.33	0.00	0.01
9.	Recreation & Culture	2.02	193.66	193.66	189.60	0.00	2.14	0.00	0.04
10.	Education	3.94	209.31	209.25	192.41	0.03	8.78	0.00	0.34
11.	Restaurants & Hotels	1.23	255.77	254.36	244.59	0.55	4.57	0.01	0.07
12.	Miscellaneous	2.76	226.28	225.02	220.73	0.56	2.51	0.02	0.08

Main contributors to month-on-month and year-on-year percentage changes are given below and detail is given in Annexure A.

1. **Month-on-month** Top few commodities which varied from previous month i.e. November 2015 are given below:-

Food Items Increased: Cigarettes (7.24%), Pulse Mash (6.08%), Eggs (3.74%), Chicken (2.91%), Tea (2.16%), Wheat & Betel Leaves (1.91% each), Gram Whole (1.90%), Dry Fruits (1.44%) and Besan (1.32%).

Decreased: Tomatoes (27.42%), Vegetables (23.92%), Onions (16.55%), Potatoes (15.42%), Sugar (5.08%), Gur (4.60%), Fresh Fruits (3.84%) and Rice (1.07%).

Non-food Items Increased: Woolen Readymade Garments (2.41%), Postal Services (2.11%), Blades (2.04%), Cosmetics (1.74%) and Cleaning & Laundry (1.05%).

2. **Year-on-Year:** Top few commodities which varied from previous year i.e. December 2014 are given below:-

Food Items Increased: Onions (112.29%), Pulse Gram (56.75%), Besan (52.16%), Pulse Mash (48.09%), Tea (29.70%), Tomatoes (26.13%), Cigarettes (25.71%) and Gram Whole (23.88%).

Decreased: Potatoes (25.06%), Rice (17.45%), Cooking Oil (15.69%), Vegetable Ghee (11.37%) and Eggs (8.97%).

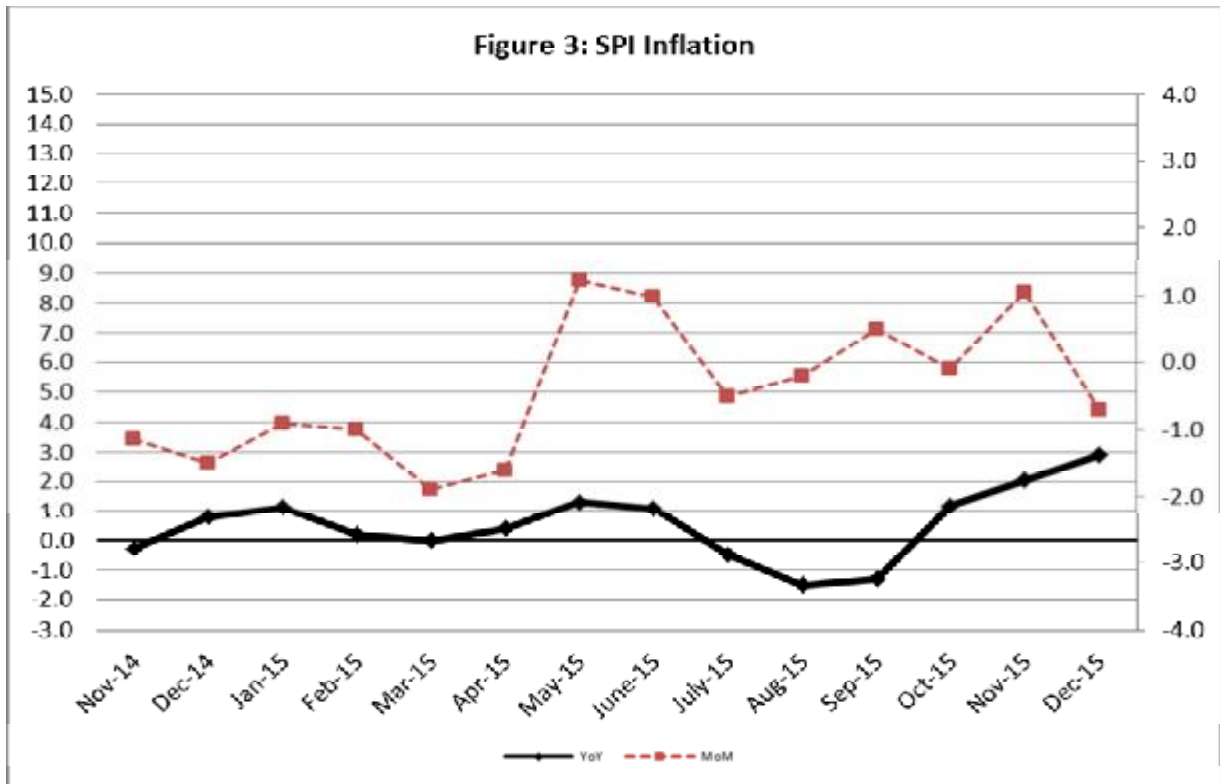
Non-food Items Increased: Sewing Needle & Dry Cell (9.93%), Gas (9.92%), Construction Wage Rates (9.15%), Education (8.78%) and Tailoring (8.69%).

Decreased: Kerosene Oil (13.32%) and Motor Fuel (8.09%).

III. Sensitive Price Indicator

Quintile-wise percentage changes YoY and MoM are given below in Table 3. The series from November 2014 to December 2015 is also graphed below in Figure 3.

Table 3 : Sensitive Price Indicator (Base 2007-08)					
Quintiles	Indices			% Change December 2015 over	
	December 2015	October 2015	December 2014	October 2015	December 2014
1	209.62	211.11	203.70	-0.71	2.91
2	216.87	218.16	209.85	-0.59	3.35
3	217.86	218.97	213.06	-0.51	2.25
4	222.48	223.31	214.64	-0.37	3.65
5	219.50	219.81	212.03	-0.14	3.52
Combined	218.60	219.37	211.76	-0.35	3.23



IV. Wholesale Price Index

The Wholesale Price Index for December 2015 is decreased by 0.65% over November, 2015. It is decreased by 0.42% over the corresponding month of the last year. YoY and MoM movements, from November, 2014 to December 2015 are also graphed below in Figure 4.

Table 4 : Wholesale Price Index by Group of Commodities (Base 2007-08)

No.	Group	Group Weight (%)	Indices			% Change Dec, 2015 over		Impact (in %age points) Dec, 2015 over	
			Dec. 2015	Nov. 2015	Dec. 2014	Nov. 2015	Dec. 2014	Nov. 2015	Dec. 2014
	General	100.00	207.37	208.72	208.25	-0.65	-0.42	-0.65	-0.42
1.	Agriculture, Forestry & Fishery Products	25.77	221.68	226.06	213.09	-1.94	4.03	-0.54	1.06
2.	Ores & Minerals, Electricity, Gas & Water	12.04	247.36	246.98	247.20	0.15	0.06	0.02	0.01
3.	Food Products, Beverages & Tobacco, Textiles, Apparel & Leather Products	31.11	213.69	212.98	205.77	0.33	3.85	0.11	1.18
i.	Food Products, Bev. & Tobacco	20.07	226.14	224.90	215.39	0.55	4.99	0.12	1.04
ii.	Textiles and Apparel	10.33	190.57	190.89	187.64	-0.17	1.56	-0.02	0.15
iii.	Leather Products	0.71	198.07	197.58	197.27	0.25	0.41	0.00	0.00
4.	Other Transportable Goods except Metal Products, Machinery & Equipment	22.37	174.69	176.87	199.17	-1.23	-12.29	-0.23	-2.63
5.	Metal Products, Machinery & Equipment	8.72	171.11	171.09	172.37	0.01	-0.73	0.00	-0.05

Main contributors to month-on-month and year-on-year percentage changes are given below and detail is given in Annexure B.

1. **Month-on-month** Top few commodities which varied from previous month i.e. November, 2015 are given below:-

Increased: Tobacco product (8.65%), Poultry (6.05%), Eggs (4.43%), Woven Fabrics (3.88%), Dried fruits and nuts (3.30%), Oil cakes (2.41%), Other cereal flour (2.36%), Pulses (1.91%), Steel products (1.57%) and wheat (1.09%).

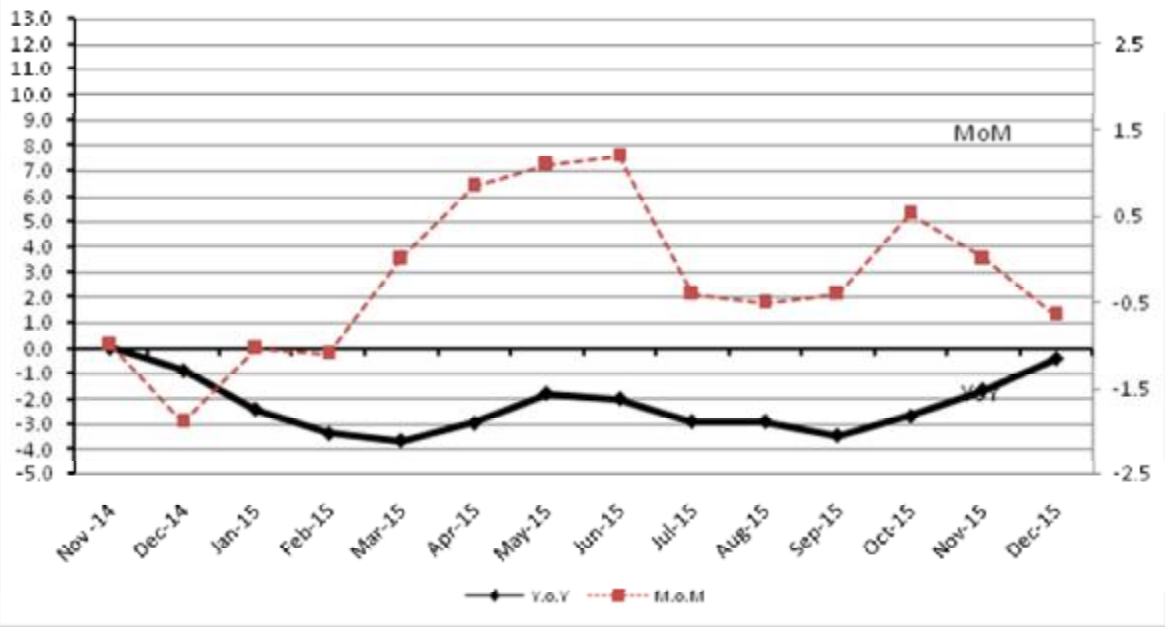
Decreased: Vegetables (31.40%), Furnace oil (13.79%), Sugar (6.40%), Potatoes (5.51%), Jowar (4.91%), Stimulant & spice crops (4.06%) and Bajra (3.94%).

2. **Year-on-year** Top few commodities which varied from previous year i.e. December, 2014 are given below:-

Increased: Other Cereal Flour (60.96%), Coffee & Tea (39.01%), Tobacco Products (33.31%), Cotton Seeds (33.56%), Fish (24.40%), Pulses (22.54%), Sugar Confectionary (16.18%), Matches (13.56%), Fiber crops (10.49%) and Pesticides (10.13%).

Decreased: Furnace Oil (51.57%), Kerosene Oil (38.11%), Potatoes (29.82%), Stimulant & Spice Crops (27.05%), Diesel (22.01%) and Insecticides (21.88%).

Figure 4: WPI Inflation



Annexure A: Consumer Price Index Numbers by Commodity Groups & Commodities (2007-08=100)

Item and Specification		Weight	Index Numbers			% Change in Dec 2015 over			
			Dec 15	Nov 15	Dec 14	Nov 2015	Dec 2014		
General		100.0000	203.06	204.22	196.79	-	0.57	+	3.19
Food and non-alcoholic Bevera		34.8343	218.28	223.17	215.18	-	2.19	+	1.44
01	Wheat	0.3477	206.87	202.99	207.94	+	1.91	-	0.51
02	Wheat Flour	4.1648	217.09	216.28	221.32	+	0.37	-	1.91
03	Wheat Product	0.0959	216.90	216.05	220.09	+	0.39	-	1.45
04	Besan	0.1500	263.29	259.87	173.03	+	1.32	+	<u>52.16</u>
05	Rice	1.5821	156.85	158.55	190.01	-	1.07	-	17.45
06	Cereals	0.1563	244.30	244.41	239.36	-	0.05	+	2.06
07	Bakery & Confectionary	1.1550	210.23	210.04	206.84	+	0.09	+	1.64
08	Nimco	0.4574	243.73	242.93	238.29	+	0.33	+	2.28
09	Meat	2.4303	257.73	255.84	244.09	+	0.74	+	5.59
10	Chicken	1.3596	179.49	174.41	193.92	+	2.91	-	7.44
11	Fish	0.2970	221.24	219.78	222.61	+	0.66	-	0.62
12	Milk Fresh	6.6800	258.64	257.02	249.48	+	0.63	+	3.67
13	Milk Products	0.6338	250.23	249.39	242.58	+	0.34	+	3.15
14	Milk Powder	0.1129	232.01	231.58	225.97	+	0.19	+	2.67
15	Eggs	0.4555	208.94	201.40	229.54	+	3.74	-	8.97
16	Mustard Oil	0.0952	154.57	155.03	158.68	-	0.30	-	2.59
17	Cooking Oil	1.7538	133.55	133.44	158.40	+	0.08	-	15.69
18	Vegetable Ghee	2.0714	136.07	135.99	153.52	+	0.06	-	11.37
19	Dry Fruits	0.2543	258.78	255.10	249.19	+	1.44	+	3.85
20	Fresh Fruits	1.8649	193.24	200.95	205.42	-	3.84	-	5.93
21	Pulse Masoor	0.2712	203.16	201.38	189.08	+	0.88	+	7.45
22	Pulse Moong	0.2336	303.32	300.34	306.98	+	0.99	-	1.19
23	Pulse Mash (Washed)	0.2098	336.48	317.19	227.22	+	6.08	+	48.09
24	Pulse Gram	0.2361	271.32	269.43	173.09	+	0.70	+	<u>56.75</u>
25	Gram Whole	0.1616	221.50	217.36	178.80	+	1.90	+	23.88
26	Beans	0.0269	233.87	233.73	243.06	+	0.06	-	3.78
27	Potatoes	0.4671	198.29	234.45	264.59	-	15.42	-	25.06
28	Onion	0.5312	312.02	373.92	146.98	-	16.55	+	<u>112.29</u>
29	Tomatoes	0.4391	200.23	275.88	158.75	-	27.42	+	26.13
30	Fresh Vegetables	1.6886	202.07	265.60	216.00	-	23.92	-	6.45
31	Sugar	1.0445	202.21	213.03	196.68	-	5.08	+	2.81
32	Gur	0.0220	266.16	278.99	253.17	-	4.60	+	5.13
33	Honey	0.0446	306.28	305.40	302.49	+	0.29	+	1.25
34	SweetMeat	0.2483	239.13	238.79	232.52	+	0.14	+	2.84
35	Beverages	1.1990	217.44	217.39	206.55	+	0.02	+	5.27
36	Jam, Tomato Ketchup & Pickles	0.2454	211.62	211.59	203.75	+	0.01	+	3.86
37	Condiments	0.2656	260.42	259.27	252.97	+	0.44	+	2.95
38	Spices	0.5441	238.38	237.23	234.25	+	0.48	+	1.76
39	Tea	0.8377	279.35	273.45	215.38	+	2.16	+	29.70
Alcoholic Beverages, Tobacco		1.4135	334.66	312.26	266.63	+	7.17	+	25.51
40	Cigarettes	1.3906	336.44	313.74	267.63	+	7.24	+	25.71
41	Betel Leaves & Nuts	0.0229	226.79	222.55	206.01	+	1.91	+	10.09
Clothing and footwear		7.5708	223.65	222.75	213.88	+	0.40	+	4.57
42	Cotton Cloth	1.7286	215.47	215.40	207.60	+	0.03	+	3.79
43	Woolen Cloth	0.8759	239.67	237.76	232.70	+	0.80	+	3.00
44	Readymade Garments	0.9739	227.80	227.22	213.12	+	0.26	+	6.89
45	Woolen Readymade Garments	0.3964	258.26	252.19	239.99	+	2.41	+	7.61
46	Hosiery	0.5094	237.01	236.08	225.57	+	0.39	+	5.07
47	Dopatta	0.4412	235.93	235.00	230.50	+	0.40	+	2.36
48	Cleaning and Laundry	0.2110	248.98	246.39	235.55	+	1.05	+	5.70
49	Tailoring	0.8840	286.25	285.69	263.37	+	0.20	+	8.69
50	Footwear	1.5504	165.24	165.14	164.29	+	0.06	+	0.58
Housing, water, Elec., Gas an		29.4149	182.69	182.66	174.04	+	0.02	+	4.97
51	House Rent	21.8149	170.85	170.85	162.06	+	0.00	+	5.42
52	Construction Input Items	0.5623	242.37	241.85	237.53	+	0.22	+	2.04
53	Construction Wage Rates	0.3331	223.74	223.39	204.99	+	0.16	+	9.15
54	Water Supply	0.4971	149.92	149.92	149.92	+	0.00	+	0.00
55	Electricity	4.3985	238.10	238.10	231.52	+	0.00	+	2.84
56	Gas	1.5756	158.08	158.08	143.81	+	0.00	+	9.92
57	Kerosene Oil	0.0057	210.91	211.04	243.33	-	0.06	-	13.32
58	Firewood Whole	0.2277	281.03	279.21	269.83	+	0.65	+	4.15
Furnishing and household equi		4.2082	216.78	215.78	208.80	+	0.46	+	3.82

Annexure A: Consumer Price Index Numbers by Commodity Groups & Commodities (2007-08=100)

Item and Specification	Weight	Index Numbers			% Change in Dec 2015 over	
		Dec 15	Nov 15	Dec 14	Nov 2015	Dec 2014
59 Furniture	0.3315	207.57	207.09	200.42	+ 0.23	+ 3.57
60 Household Textiles	0.6489	215.47	214.08	206.70	+ 0.65	+ 4.24
61 Household Equipment	0.5936	176.33	175.89	172.19	+ 0.25	+ 2.40
62 Utensils	0.3212	219.05	218.40	210.77	+ 0.30	+ 3.93
63 Plastic Products	0.2547	205.82	204.88	200.35	+ 0.46	+ 2.73
64 Washing Soaps & Detergents	0.7893	226.72	225.85	223.15	+ 0.39	+ 1.60
65 Sewing Needle & Dry Cell	0.1496	202.24	201.89	183.97	+ 0.17	+ 9.93
66 Household Servant	1.0432	238.79	237.20	226.18	+ 0.67	+ 5.58
67 Marriage Hall Charges	0.0762	234.48	234.20	230.52	+ 0.12	+ 1.72
Health	2.1868	180.83	180.59	176.31	+ 0.13	+ 2.56
68 Drugs & Medicines	1.2667	149.14	149.14	147.65	+ 0.00	+ 1.01
69 Medical Equipments	0.0080	226.66	226.66	222.46	+ 0.00	+ 1.89
70 Doctor (MBBS) Clinic Fee	0.5904	248.27	247.40	238.49	+ 0.35	+ 4.10
71 Medical Tests	0.3217	180.72	180.65	173.89	+ 0.04	+ 3.93
Transport	7.2023	177.69	177.09	185.17	+ 0.34	- 4.04
72 Motor Vehicles	0.6630	163.01	163.03	163.77	- 0.01	- 0.46
73 Motor Vehicle Accessories	0.2439	227.45	227.45	230.12	+ 0.00	- 1.16
74 Motor Fuel	3.0269	150.77	150.43	164.04	+ 0.23	- 8.09
75 Mechanical Service	0.4552	221.05	219.41	210.62	+ 0.75	+ 4.95
76 Motor Vehicle Tax	0.1099	210.18	210.18	210.18	+ 0.00	+ 0.00
77 Transport Services	2.7034	198.32	197.38	204.73	+ 0.48	- 3.13
Communication	3.2198	130.56	130.39	130.13	+ 0.13	+ 0.33
78 Postal Services	0.0662	234.78	229.93	226.10	+ 2.11	+ 3.84
79 Communication & Apparatus	3.1536	128.38	128.31	128.11	+ 0.05	+ 0.21
Recreation and culture	2.0227	193.66	193.66	189.60	+ 0.00	+ 2.14
80 Recreation & Culture	0.8634	128.29	128.29	128.06	+ 0.00	+ 0.18
81 Text Books	0.5706	290.62	290.62	280.89	+ 0.00	+ 3.46
82 Newspapers	0.1934	175.42	175.42	175.42	+ 0.00	+ 0.00
83 Stationery	0.3953	205.42	205.39	199.16	+ 0.01	+ 3.14
Education	3.9431	209.31	209.25	192.41	+ 0.03	+ 8.78
84 Education	3.9431	209.31	209.25	192.41	+ 0.03	+ 8.78
Restaurants and hotels	1.2286	255.77	254.36	244.59	+ 0.55	+ 4.57
85 Readymade Food	1.2286	255.77	254.36	244.59	+ 0.55	+ 4.57
Misc. goods and services	2.7550	226.28	225.02	220.73	+ 0.56	+ 2.51
86 Personal Care	1.4935	210.48	209.48	204.68	+ 0.48	+ 2.83
87 Cosmetics	0.3853	196.47	193.11	187.35	+ 1.74	+ 4.87
88 Blades	0.0322	194.65	190.75	185.42	+ 2.04	+ 4.98
89 Personal Equipments	0.8440	269.04	268.39	265.72	+ 0.24	+ 1.25

Annexure B: Wholesale Price Indices by Major Groups & Commodities

(2007-08=100)

Item and Specification	Weight	Index Numbers			% Change in Dec 2015 over			
		Dec 15	Nov 15	Dec 14	Nov 2015	Dec 2014		
General	100.0000	207.37	208.72	208.25	-	0.65	-	0.42
Agriculture Forestry & Fisher	25.7674	221.68	226.06	213.09	-	1.94	+	4.03
001 Wheat	0.6297	218.20	215.84	210.79	+	1.09	+	3.52
002 Maize	0.6764	182.47	185.64	186.45	-	1.71	-	2.13
003 Rice	2.4413	142.70	143.04	172.32	-	0.24	-	17.19
004 Sorghum / Jowar	0.0214	258.26	271.60	280.16	-	4.91	-	7.82
005 Millet / Bajra	0.0374	181.34	188.77	167.42	-	3.94	+	8.31
006 Vegetables	1.2441	219.72	320.31	213.83	-	31.40	+	2.75
007 Fresh Fruits	1.5144	207.01	206.96	215.51	+	0.02	-	3.94
008 Dry Fruits	0.2478	242.59	243.32	224.99	-	0.30	+	7.82
009 Cotton Seeds	1.1511	253.39	251.49	192.60	+	0.76	+	31.56
010 Other Oil Seeds	0.0722	162.29	164.88	187.36	-	1.57	-	13.38
011 Edible Roots / Potatoes	0.2540	193.69	204.98	275.99	-	5.51	-	29.82
012 Stimulant & Spice Crops	0.1634	258.33	269.27	354.12	-	4.06	-	27.05
013 Pulses	0.4901	250.31	245.62	204.27	+	1.91	+	22.54
014 Sugar Crops	1.0725	286.29	286.29	267.92	+	0.00	+	6.86
015 Fibre Crops	5.3169	172.25	173.76	155.90	-	0.87	+	10.49
016 Unmanufactured Tobacco	0.0742	229.69	229.69	217.23	+	0.00	+	5.74
017 Poultry	0.5633	192.50	181.52	192.50	+	6.05	+	0.00
018 Raw Milk from Bovine Animals	7.0279	255.42	254.04	251.69	+	0.54	+	1.48
019 Eggs	0.5034	214.79	205.67	232.79	+	4.43	-	7.73
020 Raw Animal Materials / Wool	0.0351	179.16	179.16	178.68	+	0.00	+	0.27
021 Hides & Fur Skins, Raw	0.4834	153.22	153.62	157.14	-	0.26	-	2.49
022 Fuel Wood in Logs	0.0179	263.57	263.57	250.46	+	0.00	+	5.23
023 Fish Live Fresh or Chilled	1.7295	340.91	339.32	274.05	+	0.47	+	24.40
Ores/Minerals, Elec., Gas & W	12.0389	247.36	246.98	247.20	+	0.15	+	0.06
024 Coal not Agglomerated	0.7508	192.16	192.16	223.53	+	0.00	-	14.03
025 Natural Gas Liquified	5.7385	210.78	209.99	203.99	+	0.38	+	3.33
026 Salt & Pure Sodium Chloride	0.0584	252.31	252.31	247.16	+	0.00	+	2.08
027 Electrical Energy	5.4912	293.09	293.09	295.61	+	0.00	-	0.85
Food, Beverages, Tobacco, Textil	31.1122	213.69	212.98	205.77	+	0.33	+	3.85
Food Products, Beverages &	20.0718	226.14	224.90	215.39	+	0.55	+	4.99
028 Meat of Animals	3.4559	267.04	266.98	257.59	+	0.02	+	3.67
029 Vegetables & Fruit Juice	0.0058	201.36	201.03	197.07	+	0.16	+	2.18
030 Dried Fruits & Nuts	0.1733	240.13	232.47	229.74	+	3.30	+	4.52
031 Fruit Juices	0.3880	177.53	177.53	171.93	+	0.00	+	3.26
032 Vegetable Oils Refined	1.9242	149.34	149.09	161.32	+	0.17	-	7.43
033 Vegetable Ghee	1.5632	118.09	118.02	132.27	+	0.06	-	10.72
034 Oil Cakes	0.9611	218.03	212.90	200.15	+	2.41	+	8.93
035 Processed Liquid Milk	4.4437	247.57	247.18	245.21	+	0.16	+	0.96
036 Milk & Cream in Solid Form	0.0316	217.97	216.50	222.24	+	0.68	-	1.92
037 Ice Cream	0.0047	219.91	219.91	219.91	+	0.00	+	0.00
038 Dairy Products N.E.C	0.0117	244.60	244.60	238.90	+	0.00	+	2.39
039 Wheat Flour	2.3034	202.13	202.06	202.20	+	0.03	-	0.03
040 Other Cereal Flour	0.0604	229.87	224.57	142.81	+	2.36	+	60.96
041 Sugar Refined	1.7975	210.55	224.95	204.57	-	6.40	+	2.92
042 Chocolate	0.0139	101.06	101.06	99.19	+	0.00	+	1.89
043 Sugar Confectionary	0.0738	118.83	118.83	102.28	+	0.00	+	16.18
044 Coffee & Tea	0.7303	261.86	259.94	188.37	+	0.74	+	39.01
045 Spices	0.1449	188.33	188.29	188.69	+	0.02	-	0.19
046 Other Food Products	0.0336	292.02	292.02	296.60	+	0.00	-	1.54
047 Mineral Water	0.0207	188.35	188.35	185.63	+	0.00	+	1.47
048 Beverages	0.6303	171.95	171.95	171.52	+	0.00	+	0.25
049 Tobacco Products	1.2998	387.30	356.45	290.52	+	8.65	+	33.31
Textiles & Apparels	10.3289	190.57	190.89	187.64	-	0.17	+	1.56
050 Cotton Yarn	5.2491	177.62	178.19	177.90	-	0.32	-	0.16
051 Nylon Yarn	0.1719	147.08	147.08	158.14	+	0.00	-	6.99
052 Blended Yarn	0.1689	180.89	183.29	191.73	-	1.31	-	5.65
053 Woven Fabrics	0.0128	275.66	265.37	258.39	+	3.88	+	6.68
054 Cotton Fabrics	0.6343	201.65	201.65	200.51	+	0.00	+	0.57
055 Other Fabrics	1.1016	217.81	217.81	206.11	+	0.00	+	5.68
056 Silk & Reyon Fabrics	0.7350	186.80	186.80	177.28	+	0.00	+	5.37
057 Towels	0.1235	267.20	267.20	265.62	+	0.00	+	0.59
058 Blankets	0.0029	243.93	243.93	235.86	+	0.00	+	3.42

Annexure B: Wholesale Price Indices by Major Groups & Commodities (2007-08=100)

Item and Specification	Weight	Index Numbers			% Change in Dec 2015 over	
		Dec 15	Nov 15	Dec 14	Nov 2015	Dec 2014
059 Bed Sheets	0.0913	256.29	256.29	253.21	+ 0.00	+ 1.22
060 Quilts	0.0019	198.00	196.84	191.05	+ 0.59	+ 3.64
061 Woolen Carpets	0.0383	142.86	142.86	132.14	+ 0.00	+ 8.11
062 Synthetic Carpets	0.0566	129.25	129.25	126.27	+ 0.00	+ 2.36
063 Hosiery Products	0.8832	222.88	222.88	215.35	+ 0.00	+ 3.50
064 Readymade Garments	1.0576	193.27	193.27	186.77	+ 0.00	+ 3.48
Leather Products	0.7115	198.07	197.58	197.27	+ 0.25	+ 0.41
065 Leather Without Hair	0.2973	221.97	221.97	215.02	+ 0.00	+ 3.23
066 Other Leather N.E.C	0.2567	207.64	206.27	215.39	+ 0.66	- 3.60
067 Footwears	0.1575	137.38	137.38	134.22	+ 0.00	+ 2.35
Other Transportable Goods	22.3659	174.69	176.87	199.17	- 1.23	- 12.29
068 Timber	0.0165	214.43	214.43	196.61	+ 0.00	+ 9.06
069 Printing Paper	0.4279	161.82	164.56	169.34	- 1.67	- 4.44
070 Hard Board	0.1579	197.92	197.92	229.17	+ 0.00	- 13.64
071 Coke	0.2797	163.45	163.45	163.45	+ 0.00	+ 0.00
072 Motor Spirit	1.5336	128.80	128.80	142.78	+ 0.00	- 9.79
073 Diesel Oil	5.2664	171.49	172.03	219.90	- 0.31	- 22.01
074 Kerosine Oil	0.2151	150.01	152.12	242.40	- 1.39	- 38.11
075 Furnace Oil	3.2664	65.28	75.72	134.79	- 13.79	- 51.57
076 Mobil Oil	0.7114	199.78	199.78	201.53	+ 0.00	- 0.87
077 Chemicals	1.7720	182.83	185.92	198.36	- 1.66	- 7.83
078 Dyeing Material	0.1539	146.55	146.55	143.77	+ 0.00	+ 1.93
079 Fertilizers	2.8657	271.62	273.25	272.69	- 0.60	- 0.39
080 Pesticides	0.2763	312.37	312.37	283.64	+ 0.00	+ 10.13
081 Insecticides	0.1276	134.66	134.66	172.37	+ 0.00	- 21.88
082 Paints & Varnishes	0.1916	295.36	295.36	285.78	+ 0.00	+ 3.35
083 Medicines	1.1428	146.89	146.67	145.19	+ 0.15	+ 1.17
084 Soaps & Detergents	0.8168	181.28	181.33	178.23	- 0.03	+ 1.71
085 Auto Tyres	0.2703	192.83	192.83	192.43	+ 0.00	+ 0.21
086 Plastic Products	0.4550	231.05	231.05	218.51	+ 0.00	+ 5.74
087 Glass sheets	0.2089	231.30	231.30	226.39	+ 0.00	+ 2.17
088 Other Glass Articles	0.1635	243.63	243.63	242.20	+ 0.00	+ 0.59
089 Ceramics & Sanitary Fixture	0.0244	227.13	227.13	216.53	+ 0.00	+ 4.90
090 Bricks, Blocks & Tiles	0.1566	217.47	217.09	206.80	+ 0.18	+ 5.16
091 Cement	1.8145	206.53	206.79	208.92	- 0.13	- 1.14
092 Bed Foam	0.0006	157.17	156.67	156.67	+ 0.32	+ 0.32
093 Matches	0.0505	162.62	162.62	143.20	+ 0.00	+ 13.56
Metal Product, Machinery & Eq	8.7156	171.11	171.09	172.37	+ 0.01	- 0.73
094 Pig Iron	0.0593	128.97	128.97	128.97	+ 0.00	+ 0.00
095 Steel Bar & Sheets	1.4022	127.00	127.63	145.97	- 0.49	- 13.00
096 Pipe Fittings	0.0780	194.96	195.10	191.94	- 0.07	+ 1.57
097 Steel Products	0.3879	176.27	173.54	173.80	+ 1.57	+ 1.42
098 Engines & Motors	0.0046	109.07	109.07	109.07	+ 0.00	+ 0.00
099 Vacuum Pumps	0.0155	115.39	115.39	115.39	+ 0.00	+ 0.00
100 Air Conditioners	0.0049	200.18	200.18	195.53	+ 0.00	+ 2.38
101 Cultivators	0.0551	219.76	219.76	226.90	+ 0.00	- 3.15
102 Chuff Cutter	0.1293	149.20	149.20	149.20	+ 0.00	+ 0.00
103 Tractors	0.0028	205.43	205.43	214.54	+ 0.00	- 4.25
104 Lathe Machines	0.0525	208.81	208.81	208.81	+ 0.00	+ 0.00
105 Concrete Mixture	0.0107	138.83	138.83	138.83	+ 0.00	+ 0.00
106 Fridge, WashM, SewM, Fans, Iron	1.1645	200.43	200.43	198.06	+ 0.00	+ 1.20
107 Electric Wires	0.0912	195.19	195.19	190.43	+ 0.00	+ 2.50
108 Lighting Equipments	1.4431	167.30	167.30	165.30	+ 0.00	+ 1.21
109 Radio & Television	0.1843	126.49	126.49	126.49	+ 0.00	+ 0.00
110 Motor Vehicles	0.0244	183.03	183.03	183.03	+ 0.00	+ 0.00
111 Motorcycles	0.2570	125.89	125.89	128.20	+ 0.00	- 1.80
112 Bicycles	3.3483	185.63	185.63	182.84	+ 0.00	+ 1.53