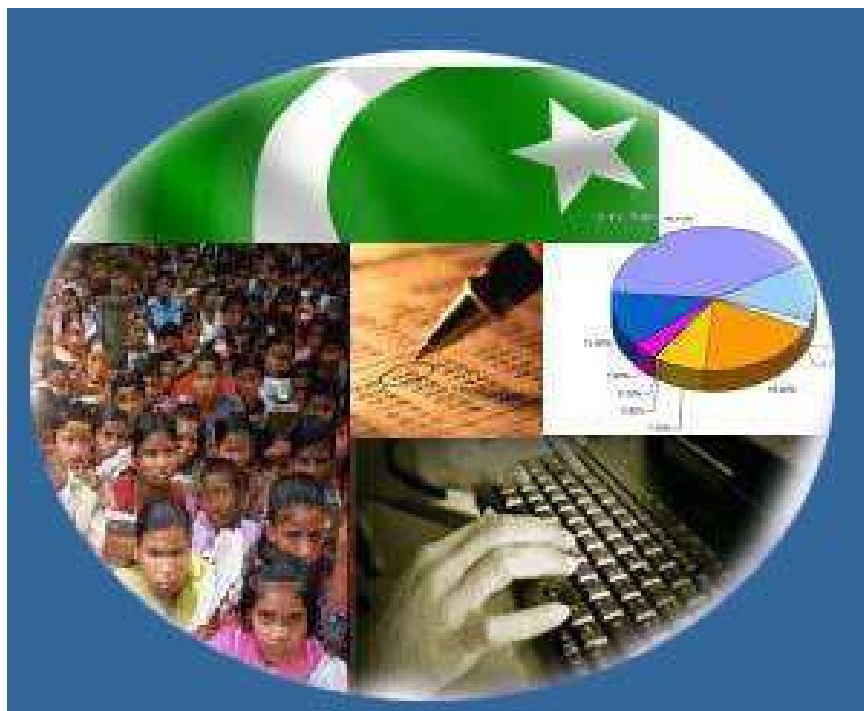




Monthly Review on Price Indices



March, 2016
(Base 2007-08)

Government of Pakistan
Statistics Division
Pakistan Bureau of Statistics
Islamabad

Inflation in Brief

1. CPI inflation, General increased by 3.9% on year-on-year basis in March 2016 as compared to an increase of 4.0% in the previous month and 2.5% in March 2015. On month-on-month basis, it increased by 0.2% in March 2016 as compared to decrease of 0.3% in the previous month and an increase of 0.2% in March 2015.
2. Core inflation measured by non-food non-energy CPI (Core NFNE) increased by 4.7% on (YoY) basis in March 2016 as compared to increase of 4.5% in the previous month and 5.9% in March 2015. On (MoM) basis, it increased by 0.2% in March 2016 as compared to increase of 0.2% in previous month and increase of 0.1% in March 2015.
3. Core inflation, measured by 20% weighted trimmed mean CPI (Core Trimmed) increased by 3.8% on (YoY) basis in March 2016 as compared to 3.6% in the previous month and by 3.8% in March 2015. On (MoM) basis, it increased by 0.2% in March 2016 as compared to an increase of 0.1% in the previous month and no change in March 2015.
4. SPI inflation on YoY increased by 3.5% in March 2016 as compared to an increase of 3.6% a month earlier and decrease of 1.9% in March 2015. On MoM basis, it decreased by 0.2% in March 2016 as compared to a decrease of 0.5% a month earlier and no change in March 2015.
5. WPI inflation on YoY basis increased by 0.2% in March 2016 as compared to an increase of 0.6% a month earlier and a decrease of 3.7% in March 2015. WPI inflation on MoM basis decreased by 0.4% in March 2016 as compared to decrease of 0.6% a month earlier and no change in March 2015.
6. Figures 1 and 2 show graphically the data of Table 1. Table 1.1 shows "Period Average" and "YoY" percent changes in indices of three years.

Table 1: Inflation (%) (Base 2007-08)

Period	CPI						Core Inflation				SPI**		WPI	
	General		Food		Non-food		NFNE*		Trimmed		YoY	MoM	YoY	MoM
	YoY	MoM	YoY	MoM	YoY	MoM	YoY	MoM	YoY	MoM				
Feb 15	3.2	-0.9	2.1	-1.8	4.0	-0.3	6.2	0.0*	4.2	-0.2	0.2	-1.0	-3.4	-1.1
Mar 15	2.5	0.2	0.5	0.5	3.9	0.0*	5.9	0.1	3.8	0.0*	-1.9	0.0*	-3.7	0.0*
Apr 15	2.1	1.3	0.0*	1.4	3.7	1.3	5.4	1.4	3.1	0.6	-1.6	0.4	-2.9	0.9
May 15	3.2	0.8	3.0	1.8	3.3	0.0*	4.9	0.0*	3.9	0.1	1.2	1.3	-1.8	1.1
Jun-15	3.2	0.6	3.2	1.2	3.2	0.2	4.6	0.1	3.8	0.2	1.1	1.0	-2.0	1.2
Jul-15	1.9	0.4	0.6	0.1	2.8	0.6	4.1	0.6	2.9	0.5	-0.5	0.3	-2.9	-0.4
Aug-15	1.8	0.2	0.4	0.3	2.8	0.2	4.0	0.1	2.8	0.1	-1.5	-0.2	-2.9	-0.5
Sep-15	1.3	-0.1	-0.1	-0.4	2.4	0.1	3.4	0.1	2.8	0.1	-1.3	0.5	-3.5	-0.4
Oct 15	1.6	0.5	0.5	0.4	2.4	0.5	3.4	0.6	2.8	0.4	-0.1	1.2	-2.7	0.5
Nov 15	2.7	0.6	2.2	1.2	3.2	0.2	4.0	0.1	2.9	0.2	2.1	1.0	-1.7	0.0*
Dec 15	3.2	-0.6	2.7	-1.6	3.6	0.2	4.1	0.2	2.7	0.2	2.9	-0.7	-0.4	-0.7
Jan 16	3.3	0.2	2.5	-0.6	3.9	0.8	4.3	0.9	3.0	0.6	3.1	-0.7	0.1	-0.5
Feb 16	4.0	-0.3	3.7	-0.7	4.2	0.0*	4.5	0.2	3.6	0.1	3.6	-0.5	0.6	-0.6
Mar 16	3.9	0.2	3.7	0.5	4.1	-0.1	4.7	0.2	3.8	0.2	3.5	-0.2	0.2	-0.4

*NFNE is non-food non-energy, ** SPI for quintile 1. Digits 0.0* are due to rounding off.

Table 1.1 : Period Average and YoY % Changes of Indices (Base 2007-08)

Index	Averages July-March % Changes			March over March % Changes		
	2015-16	2014-15	2013-14	2015-16	2014-15	2013-14
CPI	2.64	5.12	8.64	3.94	2.49	8.53
SPI	1.27	2.25	9.84	3.45	-1.89	8.98
WPI	-1.49	0.36	8.43	0.16	-3.67	7.68

Figure 1: CPI Inflation YoY, Special Indices

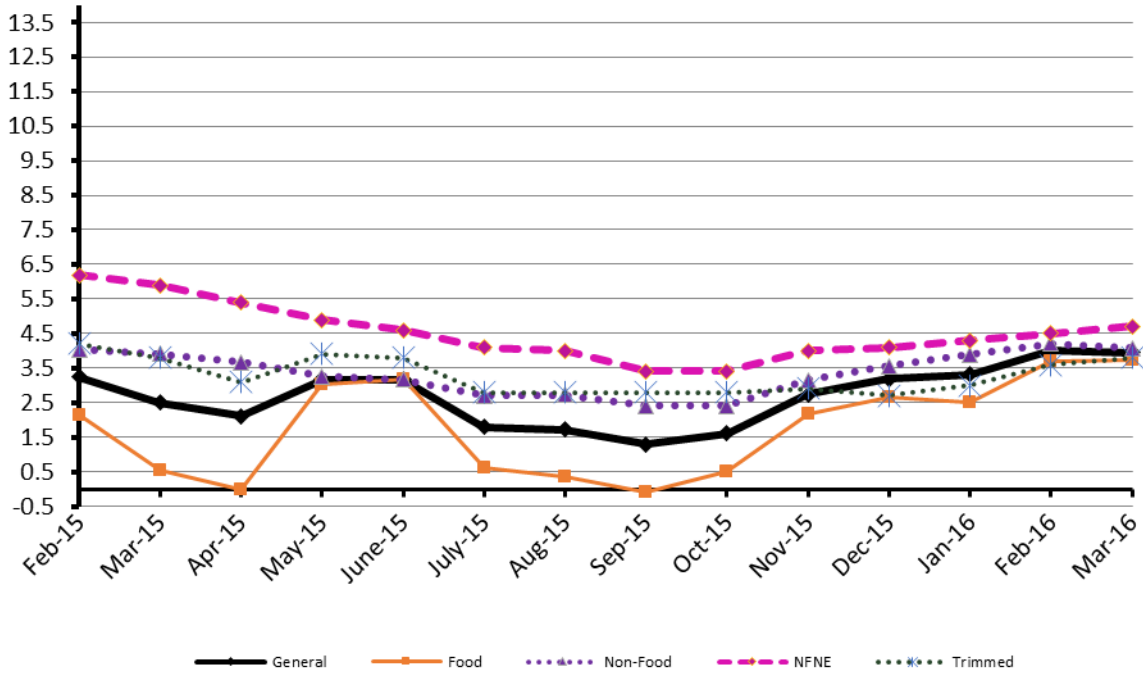
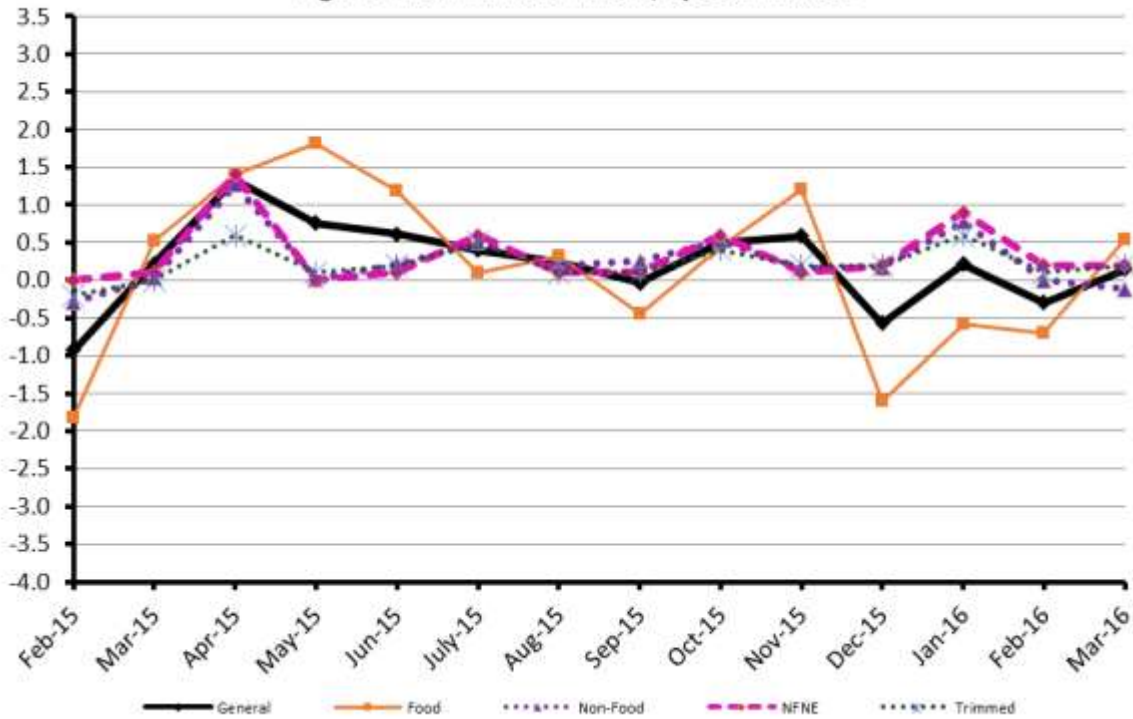


Figure 2: CPI Inflation MoM, Special Indices



II. Consumer Price Index (CPI)

The Consumer Price Index of March 2016, has increased by 0.15% over February 2016 and by 3.94% over corresponding month of the last year i.e. March 2015.

Table 2 : Consumer Price Index by Group of Commodities and Services (Base 2007-08)

No	Group	Group Weight (%)	Indices			% Change March 2016 Over		Impact (In % points) March 2016 Over	
			Mar 2016	Feb 2016	Mar 2015	Feb 2016	Mar 2015	Feb 2016	Mar 2015
	General	100.00	203.28	202.98	195.57	0.15	3.94	0.15	3.94
1.	Food & Non-alcoholic Bev.	34.83	216.13	214.99	210.96	0.53	2.45	0.20	0.92
	<i>Non-perishable Food Items</i>	29.84	219.27	219.38	213.73	-0.05	2.59	-0.02	0.84
	<i>Perishable Food Items</i>	4.99	197.35	188.76	194.42	4.55	1.51	0.21	0.07
2.	Alcoholic Bev.& Tobacco	1.41	338.77	337.57	266.63	0.35	27.05	0.01	0.52
3.	Clothing & Footwear	7.57	226.40	224.97	215.06	0.64	5.27	0.05	0.44
4.	Housing, Water, Electricity, Gas & Fuels	29.41	185.48	185.49	176.51	-0.01	5.08	0.00	1.35
5.	Furnishing & Household Equipment Maintenance	4.21	219.50	218.83	209.89	0.31	4.58	0.01	0.21
6.	Health	2.19	185.68	184.18	177.26	0.81	4.75	0.02	0.09
7.	Transport	7.20	168.25	174.05	175.14	-3.33	-3.93	-0.21	-0.25
8.	Communication	3.22	130.74	130.57	130.27	0.13	0.36	0.00	0.01
9.	Recreation & Culture	2.02	194.71	194.38	189.80	0.17	2.59	0.00	0.05
10.	Education	3.94	210.99	210.15	192.50	0.40	9.61	0.02	0.37
11.	Restaurants & Hotels	1.23	261.80	259.39	247.22	0.93	5.90	0.01	0.09
12.	Miscellaneous	2.76	232.55	230.15	222.57	1.04	4.48	0.03	0.14

Main contributors to month-on-month and year-on-year percentage changes are given below and detail is given in Annexure A.

1. **Month-on-month** Top few commodities which varied from previous month i.e. February 2016 are given below:-

Food Items Increased: Chicken (13.92), Fresh Fruit (8.31%), Fresh Vegetables (6.73%), Betel Leaves & Nuts (2.22%) and Potatoes (1.6%).

Decreased: Tomatoes (18.67%), Eggs (16.56%) and Tea (7.57%).

Non-food Items Increased: Personal equipment (2.13%), Medical Tests (1.21%), Kerosene Oil (1.23%), Readymade garments (1.15) and Woolen Cloth (1.11%).

Decreased: Motor Fuel (7.3%) and Transport Services (1.94%).

2. **Year-on-Year:** Top few commodities which varied from previous year i.e. March 2015 are given below:-

Food Items Increased: Pulse Mash (53.99%), Pulse Gram (52.32%), Besan (47.78%), Onion (43.44%), Cigarettes (27.22%), Gram Whole (24.11%), Tea (19.18), Sugar (14.91%) and Betel Leaves and Nuts (13.76%).

Decreased: Tomatoes (49.6%), Potatoes (18.29%), Cooking Oil (12.83%), Rice (12.8%), Eggs (10.49%) and Vegetable Ghee (8.71%).

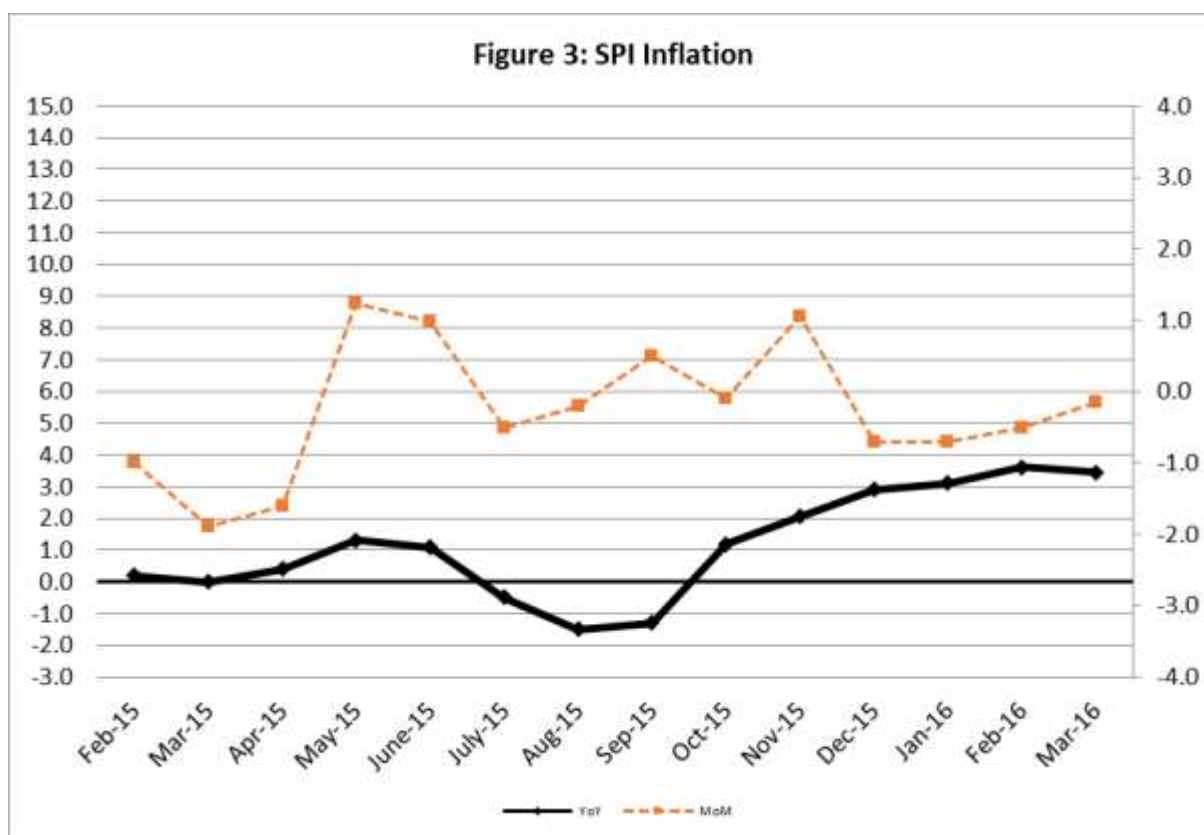
Non-food Items Increased: Sewing Needle (11.31%), Gas (9.92%), Tailoring (9.75%), Education (9.61%), Readymade Garments (8.63%), Household Servants (8.22%), Construction Wage Rates (7.87%), Water Supply (7.46%) and Doctor MBBS Fee (7.02%).

Decreased: Motor Fuel (8.76%), Kerosene Oil (7.02%) and Motor Vehicle Accessories (4.02%) and Transport Services (2.71%).

III. Sensitive Price Indicator

Quintile-wise percentage changes YoY and MoM are given below in Table 3. The series from February 2015 to March 2016 is also graphed below in Figure 3.

Table 3 : Sensitive Price Indicator (Base 2007-08)					
Quintiles	Indices			% Change March 2016 over	
	March 2016	February 2016	March 2015	February 2016	March 2015
1	206.81	207.12	199.92	-0.15	3.45
2	213.97	214.24	205.81	-0.13	3.96
3	214.76	215.07	208.83	-0.14	2.84
4	219.04	219.50	209.99	-0.21	4.31
5	215.46	216.42	206.70	-0.44	4.24
Combined	215.13	215.73	207.05	-0.28	3.90



IV. Wholesale Price Index

The Wholesale Price Index for March 2016 decreased by 0.40% over February, 2016. It increased by 0.16% over the corresponding month of the last year i.e. March 2015. YoY and MoM movements, from February, 2015 to March 2016 are also graphed below in Figure 4.

Table 4 : Wholesale Price Index by Group of Commodities (Base 2007-08)

No.	Group	Group Weight (%)	Indices			% Change March, 2016 over		Impact (In %age points) March, 2016 over	
			Mar. 2016	Feb. 2016	Mar. 2015	Feb. 2016	Mar. 2015	Feb. 2016	Mar. 2015
	General	100.00	204.22	205.05	203.89	-0.40	0.16	-0.40	0.16
1.	Agriculture, Forestry & Fishery Products	25.77	221.02	221.23	212.84	-0.09	3.84	-0.03	1.03
2.	Ores & Minerals, Electricity, Gas & Water	12.04	245.22	245.89	246.08	-0.27	-0.35	-0.04	-0.05
3.	Food Products, Beverages & Tobacco, Textiles, Apparel & Leather Products	31.11	214.66	215.03	205.27	-0.17	4.57	-0.06	1.43
	i. Food Products, Bev. & Tobacco	20.07	228.30	228.87	216.35	-0.25	5.52	-0.06	1.18
	ii. Textiles and Apparel	10.33	189.28	189.32	184.58	-0.02	2.55	0.00	0.24
	iii. Leather Products	0.71	198.39	197.95	193.14	0.22	2.72	0.00	0.02
4.	Other Transportable Goods except Metal Products, Machinery & Equipment	22.37	161.42	164.03	180.97	-1.59	-10.80	-0.28	-2.14
5.	Metal Products, Machinery & Equipment	8.72	170.45	170.44	173.00	0.01	-1.47	0.00	-0.11

Main contributors to month-on-month and year-on-year percentage changes are given below and detail is given in Annexure B.

1. **Month-on-month** Top few commodities which varied from previous month i.e. February, 2016 are given below:-

Increased: Poultry (13.98%), woolen carpets (8.93%), Furnace oil (6.70%), Fresh Fruits (5.71%), Jowar (5.53%), Bajra (4.46%), Oil Cakes (3.27%), Insecticides (2.61%), Vegetables (2.45%), Medicines (2.36%) and Maize (2.27%).

Decreased: Eggs (21.32%), Motor spirit (11.91%), Coffee & Tea (8.57%), Diesel oil (5.66%), Potatoes (4.76%) and Stimulant & Spices (3.09%),

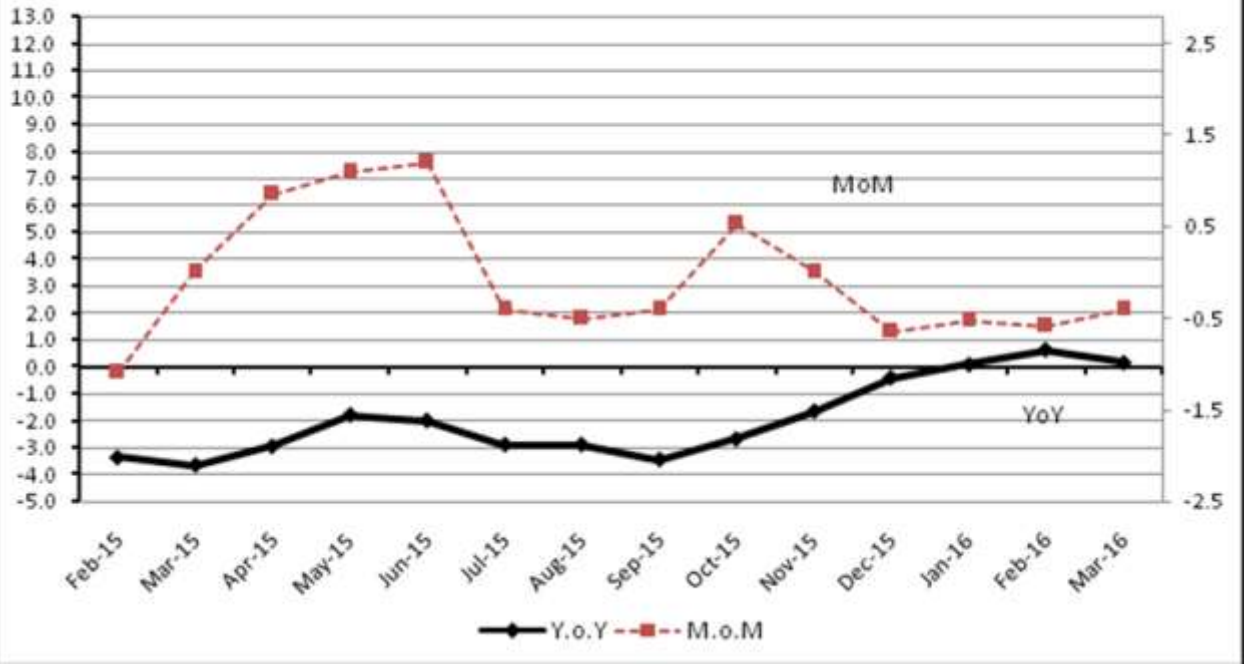
s

2. **Year-on-year** Top few commodities which varied from previous year i.e. March, 2015 are given below:-

Increased: Other Cereal Flour (55.37%), Woolen carpets (37.39%), Tobacco Products (33.31%), Cotton Seeds (24.58%), Coffee & Tea (21.88%), Oil Cakes (20.78%), Pulses (18.00%), Fish (17.06%), Sugar Confectionary (16.18%), Sugar (16.07%), Bajra (15.54%), Matches (13.56%) and Vegetables (11.10%).

Decreased: Furnace oil (49.01%), Kerosene oil (35.67%), Potatoes (25.25%), Diesel oil (23.01%), Coal (21.05%), Stimulant & Spices (16.52%) and Eggs (15.02%).

Figure 4: WPI Inflation



Annexure A: Consumer Price Index Numbers by Commodity Groups & Commodities (2007-08=100)

Item and Specification	Weight	Index Numbers			% Change in Mar 2016 over	
		Mar 16	Feb 16	Mar 15	Feb 2016	Mar 2015
General	100.0000	203.28	202.98	195.57	+ 0.15	+ 3.94
Food and non-alcoholic Beverages	34.8343	216.13	214.99	210.96	+ 0.53	+ 2.45
01 Wheat	0.3477	208.84	209.18	206.08	- 0.16	+ 1.34
02 Wheat Flour	4.1648	216.95	217.05	216.38	- 0.05	+ 0.26
03 Wheat Product	0.0959	212.36	213.03	214.46	- 0.31	- 0.98
04 Besan	0.1500	258.58	258.32	174.98	+ 0.10	+ 47.78
05 Rice	1.5821	157.09	156.66	180.14	+ 0.27	- 12.80
06 Cereals	0.1563	248.03	245.93	239.89	+ 0.85	+ 3.39
07 Bakery & Confectionary	1.1550	212.37	211.97	207.63	+ 0.19	+ 2.28
08 Nimco	0.4574	244.62	246.64	238.99	- 0.82	+ 2.36
09 Meat	2.4303	260.17	259.99	245.19	+ 0.07	+ 6.11
10 Chicken	1.3596	169.42	148.72	170.28	+ 13.92	- 0.51
11 Fish	0.2970	216.71	217.07	218.38	- 0.17	- 0.76
12 Milk Fresh	6.6800	259.52	259.27	249.65	+ 0.10	+ 3.95
13 Milk Products	0.6338	251.48	250.66	242.74	+ 0.33	+ 3.60
14 Milk Powder	0.1129	235.07	234.30	226.26	+ 0.33	+ 3.89
15 Eggs	0.4555	169.12	202.68	188.93	- 16.56	- 10.49
16 Mustard Oil	0.0952	155.95	155.57	156.03	+ 0.24	- 0.05
17 Cooking Oil	1.7538	132.58	132.13	152.09	+ 0.34	- 12.83
18 Vegetable Ghee	2.0714	136.29	135.96	149.30	+ 0.24	- 8.71
19 Dry Fruits	0.2543	261.11	262.54	251.60	- 0.54	+ 3.78
20 Fresh Fruits	1.8649	221.54	204.55	211.26	+ 8.31	+ 4.87
21 Pulse Masoor	0.2712	202.97	202.55	188.43	+ 0.21	+ 7.72
22 Pulse Moong	0.2336	298.42	300.13	311.95	- 0.57	- 4.34
23 Pulse Mash (Washed)	0.2098	348.96	348.73	226.61	+ 0.07	+ <u>53.99</u>
24 Pulse Gram	0.2361	267.42	268.47	175.56	- 0.39	+ <u>52.32</u>
25 Gram Whole	0.1616	222.26	223.24	179.08	- 0.44	+ 24.11
26 Beans	0.0269	231.25	233.25	235.83	- 0.86	- 1.94
27 Potatoes	0.4914	125.41	123.43	153.49	+ 1.60	- 18.29
28 Onion	0.5555	248.77	247.60	173.43	+ 0.47	+ 43.44
29 Tomatoes	0.4634	93.51	114.98	185.55	- 18.67	- 49.60
30 Fresh Vegetables	1.6157	203.43	190.61	197.16	+ 6.73	+ 3.18
31 Sugar	1.0445	223.13	223.59	194.18	- 0.21	+ 14.91
32 Gur	0.0220	267.43	266.92	252.22	+ 0.19	+ 6.03
33 Honey	0.0446	307.12	307.75	303.39	- 0.20	+ 1.23
34 Sweetmeat	0.2483	239.96	241.33	234.31	- 0.57	+ 2.41
35 Beverages	1.1990	215.86	215.64	206.84	+ 0.10	+ 4.36
36 Jam, Tomato Ketchup & Pickles	0.2454	211.82	212.12	207.58	- 0.14	+ 2.04
37 Condiments	0.2656	261.12	262.38	256.81	- 0.48	+ 1.68
38 Spices	0.5441	238.67	239.15	235.06	- 0.20	+ 1.54
39 Tea	0.8377	261.29	282.69	219.24	- 7.57	+ 19.18
Alcoholic Beverages, Tobacco	1.4135	338.77	337.57	266.63	+ 0.36	+ 27.06
40 Cigarettes	1.3906	340.48	339.36	267.63	+ 0.33	+ 27.22
41 Betel Leaves & Nuts	0.0229	234.38	229.29	206.03	+ 2.22	+ 13.76
Clothing and footwear	7.5708	226.40	224.97	215.06	+ 0.64	+ 5.27
42 Cotton Cloth	1.7286	218.51	216.48	209.30	+ 0.94	+ 4.40
43 Woolen Cloth	0.8759	243.45	240.78	233.69	+ 1.11	+ 4.18
44 Readymade Garments	0.9739	232.44	229.79	213.98	+ 1.15	+ 8.63
45 Woolen Readymade Garments	0.3964	252.77	254.84	240.87	- 0.81	+ 4.94
46 Hosiery	0.5094	239.97	238.88	226.43	+ 0.46	+ 5.98
47 Dopatta	0.4412	240.45	239.78	231.21	+ 0.28	+ 4.00
48 Cleaning and Laundry	0.2110	252.25	251.12	237.64	+ 0.45	+ 6.15
49 Tailoring	0.8840	292.19	289.94	266.24	+ 0.78	+ 9.75
50 Footwear	1.5504	165.51	165.44	164.45	+ 0.04	+ 0.64
Housing, water, Elec., Gas an	29.4149	185.48	185.49	176.51	- 0.01	+ 5.08
51 House Rent	21.8149	174.32	174.32	165.29	+ 0.00	+ 5.46
52 Construction Input Items	0.5623	241.67	242.77	237.12	- 0.45	+ 1.92
53 Construction Wage Rates	0.3331	225.24	225.13	208.81	+ 0.05	+ 7.87
54 Water Supply	0.4971	161.10	161.10	149.92	+ 0.00	+ 7.46

Annexure A: Consumer Price Index Numbers by Commodity Groups & Commodities (2007-08=100)

Item and Specification	Weight	Index Numbers			% Change in Mar 2016 over	
		Mar 16	Feb 16	Mar 15	Feb 2016	Mar 2015
55 Electricity	4.3985	238.10	238.10	231.52	+ 0.00	+ 2.84
56 Gas	1.5756	158.08	158.08	143.81	+ 0.00	+ 9.92
57 Kerosene Oil	0.0057	191.37	189.04	205.81	+ 1.23	- 7.02
58 Firewood Whole	0.2277	283.78	283.33	275.22	+ 0.16	+ 3.11
Furnishing and household equipment	4.2082	219.50	218.83	209.89	+ 0.31	+ 4.58
59 Furniture	0.3315	210.00	208.62	202.15	+ 0.66	+ 3.88
60 Household Textiles	0.6489	219.62	217.54	207.67	+ 0.96	+ 5.75
61 Household Equipment	0.5936	176.51	176.18	172.55	+ 0.19	+ 2.29
62 Utensils	0.3212	221.38	219.75	212.69	+ 0.74	+ 4.09
63 Plastic Products	0.2547	206.73	206.33	201.40	+ 0.19	+ 2.65
64 Washing Soaps & Detergents	0.7893	225.20	226.94	224.64	- 0.77	+ 0.25
65 Sewing Needle & Dry Cell	0.1496	205.05	203.40	184.21	+ 0.81	+ 11.31
66 Household Servant	1.0432	245.77	244.50	227.11	+ 0.52	+ 8.22
67 Marriage Hall Charges	0.0762	238.96	238.96	231.83	+ 0.00	+ 3.08
Health	2.1868	185.68	184.18	177.26	+ 0.81	+ 4.75
68 Drugs & Medicines	1.2667	152.54	151.34	148.33	+ 0.79	+ 2.84
69 Medical Equipments	0.0080	227.28	227.00	222.66	+ 0.12	+ 2.07
70 Doctor (MBBS) Clinic Fee	0.5904	255.23	253.49	238.49	+ 0.69	+ 7.02
71 Medical Tests	0.3217	187.50	185.26	177.69	+ 1.21	+ 5.52
Transport	7.2023	168.25	174.01	175.14	- 3.31	- 3.93
72 Motor Vehicles	0.6630	165.19	165.19	163.87	+ 0.00	+ 0.81
73 Motor Vehicle Accessories	0.2439	220.51	220.92	230.17	- 0.19	- 4.20
74 Motor Fuel	3.0269	133.68	144.21	146.52	- 7.30	- 8.76
75 Mechanical Service	0.4552	223.78	222.80	212.42	+ 0.44	+ 5.35
76 Motor Vehicle Tax	0.1099	210.18	210.18	210.18	+ 0.00	+ 0.00
77 Transport Services	2.7034	191.93	195.63	197.28	- 1.89	- 2.71
Communication	3.2198	130.74	130.57	130.27	+ 0.13	+ 0.36
78 Postal Services	0.0662	237.90	235.86	227.44	+ 0.86	+ 4.60
79 Communication & Apparatus	3.1536	128.49	128.36	128.23	+ 0.10	+ 0.20
Recreation and culture	2.0227	194.71	194.38	189.80	+ 0.17	+ 2.59
80 Recreation & Culture	0.8634	128.83	128.58	128.25	+ 0.19	+ 0.45
81 Text Books	0.5706	290.62	290.62	280.89	+ 0.00	+ 3.46
82 Newspapers	0.1934	175.49	175.49	175.42	+ 0.00	+ 0.04
83 Stationery	0.3953	209.56	208.44	199.80	+ 0.54	+ 4.88
Education	3.9431	210.99	210.15	192.50	+ 0.40	+ 9.61
84 Education	3.9431	210.99	210.15	192.50	+ 0.40	+ 9.61
Restaurants and hotels	1.2286	261.80	259.39	247.22	+ 0.93	+ 5.90
85 Readymade Food	1.2286	261.80	259.39	247.22	+ 0.93	+ 5.90
Misc. goods and services	2.7550	232.55	230.15	222.57	+ 1.04	+ 4.48
86 Personal Care	1.4935	213.45	212.55	206.71	+ 0.42	+ 3.26
87 Cosmetics	0.3853	198.43	197.67	190.30	+ 0.38	+ 4.27
88 Blades	0.0322	195.05	195.05	185.88	+ 0.00	+ 4.93
89 Personal Equipments	0.8440	283.36	277.46	266.75	+ 2.13	+ 6.23

Annexure B: Wholesale Price Indices by Major Groups & Commodities

(2007-08=100)

Item and Specification	Weight	Index Numbers			% Change in Mar 2016 over			
		Mar 16	Feb 16	Mar 15	Feb 2016	Mar 2015		
General	100.0000	204.22	205.05	203.89	-	0.40	+	0.16
Agriculture Forestry & Fisher	25.7674	221.02	221.23	212.84	-	0.09	+	3.84
001 Wheat	0.6297	218.68	220.02	210.62	-	0.61	+	3.83
002 Maize	0.6764	193.96	189.65	187.54	+	2.27	+	3.42
003 Rice	2.4413	143.85	141.69	162.53	+	1.52	-	11.49
004 Sorghum / Jowar	0.0214	278.40	263.80	289.73	+	5.53	-	3.91
005 Millet / Bajra	0.0374	184.22	176.35	159.44	+	4.46	+	15.54
006 Vegetables	1.2441	209.51	204.49	188.58	+	2.45	+	11.10
007 Fresh Fruits	1.5144	244.90	231.68	226.58	+	5.71	+	8.09
008 Dry Fruits	0.2478	248.22	250.92	232.48	-	1.08	+	6.77
009 Cotton Seeds	1.1511	253.39	257.94	203.39	-	1.76	+	24.58
010 Other Oil Seeds	0.0722	156.93	157.46	172.36	-	0.34	-	8.95
011 Edible Roots / Potatoes	0.2540	112.72	118.35	150.80	-	4.76	-	25.25
012 Stimulant & Spice Crops	0.1634	235.21	242.72	281.74	-	3.09	-	16.52
013 Pulses	0.4901	247.46	247.95	209.71	-	0.20	+	18.00
014 Sugar Crops	1.0725	286.29	286.29	286.29	+	0.00	+	0.00
015 Fiber Crops	5.3169	172.25	175.71	165.63	-	1.97	+	4.00
016 Unmanufactured Tobacco	0.0742	230.02	230.02	217.50	+	0.00	+	5.76
017 Poultry	0.5633	172.94	151.73	167.92	+	13.98	+	2.99
018 Raw Milk from Bovine Animals	7.0279	255.42	255.42	251.69	+	0.00	+	1.48
019 Eggs	0.5034	161.26	204.96	189.76	-	21.32	-	15.02
020 Raw Animal Materials / Wool	0.0351	176.96	177.45	177.10	-	0.28	-	0.08
021 Hides & Fur Skins, Raw	0.4834	150.63	150.46	159.92	+	0.11	-	5.81
022 Fuel Wood in Logs	0.0179	266.30	266.30	259.53	+	0.00	+	2.61
023 Fish Live Fresh or Chilled	1.7295	335.61	336.96	286.70	-	0.40	+	17.06
Ores/Minerals, Elec., Gas & W	12.0389	245.22	245.89	246.08	-	0.27	-	0.35
024 Coal not Agglomerated	0.7508	176.47	174.51	223.53	+	1.12	-	21.05
025 Natural Gas Liquified	5.7385	208.35	210.01	201.62	-	0.79	+	3.34
026 Salt & Pure Sodium Chloride	0.0584	252.31	252.31	247.16	+	0.00	+	2.08
027 Electrical Energy	5.4912	293.09	293.09	295.61	+	0.00	-	0.85
Food, Beverages, Tobacco, Textil	31.1122	214.66	215.03	205.27	-	0.17	+	4.57
Food Products, Beverages &	20.0718	228.30	228.87	216.35	-	0.25	+	5.52
028 Meat of Animals	3.4559	268.99	268.53	260.18	+	0.17	+	3.39
029 Vegetables & Fruit Juice	0.0058	201.36	201.36	198.31	+	0.00	+	1.54
030 Dried Fruits & Nuts	0.1733	250.38	250.38	229.85	+	0.00	+	8.93
031 Fruit Juices	0.3880	175.99	175.90	173.34	+	0.05	+	1.53
032 Vegetable Oils Refined	1.9242	148.47	148.73	158.10	-	0.17	-	6.09
033 Vegetable Ghee	1.5632	119.01	118.76	128.57	+	0.21	-	7.44
034 Oil Cakes	0.9611	224.87	217.76	186.18	+	3.27	+	20.78
035 Processed Liquid Milk	4.4437	247.57	247.57	253.81	+	0.00	-	2.46
036 Milk & Cream in Solid Form	0.0316	219.09	219.09	221.70	+	0.00	-	1.18
037 Ice Cream	0.0047	225.40	223.70	219.91	+	0.76	+	2.50
038 Dairy Products N.E.C	0.0117	248.13	248.13	239.38	+	0.00	+	3.66
039 Wheat Flour	2.3034	200.63	201.07	198.06	-	0.22	+	1.30
040 Other Cereal Flour	0.0604	225.20	225.94	144.94	-	0.33	+	55.37
041 Sugar Refined	1.7975	237.73	239.31	204.82	-	0.66	+	16.07
042 Chocolate	0.0139	101.06	101.06	99.19	+	0.00	+	1.89
043 Sugar Confectionary	0.0738	118.83	118.83	102.28	+	0.00	+	16.18
044 Coffee & Tea	0.7303	238.86	261.24	195.98	-	8.57	+	21.88
045 Spices	0.1449	189.77	189.65	189.66	+	0.06	+	0.06
046 Other Food Products	0.0336	292.52	292.52	294.23	+	0.00	-	0.58
047 Mineral Water	0.0207	194.37	189.02	187.86	+	2.83	+	3.47
048 Beverages	0.6303	172.44	171.95	171.62	+	0.28	+	0.48
049 Tobacco Products	1.2998	387.30	387.30	290.52	+	0.00	+	33.31
Textiles & Apparels	10.3289	189.28	189.32	184.58	-	0.02	+	2.55
050 Cotton Yarn	5.2491	174.54	175.22	170.43	-	0.39	+	2.41
051 Nylon Yarn	0.1719	147.08	147.08	150.22	+	0.00	-	2.09
052 Blended Yarn	0.1689	175.44	175.44	182.56	+	0.00	-	3.90
053 Woven Fabrics	0.0128	275.66	275.66	258.39	+	0.00	+	6.68
054 Cotton Fabrics	0.6343	204.95	201.65	201.34	+	1.64	+	1.79
055 Other Fabrics	1.1016	218.24	217.82	212.61	+	0.19	+	2.65
056 Silk & Reyon Fabrics	0.7350	186.80	186.80	179.89	+	0.00	+	3.84
057 Towels	0.1235	267.20	267.20	265.62	+	0.00	+	0.59
058 Blankets	0.0029	243.93	243.93	235.86	+	0.00	+	3.42

Annexure B: Wholesale Price Indices by Major Groups & Commodities

(2007-08=100)

Item and Specification	Weight	Index Numbers			% Change in Mar 2016 over		
		Mar 16	Feb 16	Mar 15	Feb 2016	Mar 2015	
059 Bed Sheets	0.0913	256.29	256.29	255.40	+	0.00	+ 0.35
060 Quilts	0.0019	201.47	201.47	196.84	+	0.00	+ 2.35
061 Woolen Carpets	0.0383	181.55	166.67	132.14	+	8.93	+ 37.39
062 Synthetic Carpets	0.0566	129.25	129.25	126.27	+	0.00	+ 2.36
063 Hosiery Products	0.8832	222.52	222.52	216.06	+	0.00	+ 2.99
064 Readymade Garments	1.0576	193.27	193.27	186.77	+	0.00	+ 3.48
Leather Products	0.7115	198.39	197.95	193.14	+	0.22	+ 2.72
065 Leather Without Hair	0.2973	221.97	221.97	207.72	+	0.00	+ 6.86
066 Other Leather N.E.C	0.2567	207.31	207.31	212.39	+	0.00	- 2.39
067 Footwears	0.1575	139.36	137.38	134.22	+	1.44	+ 3.83
Other Transportable Goods	22.3659	161.42	164.03	180.97	-	1.59	- 10.80
068 Timber	0.0165	220.36	216.79	202.05	+	1.65	+ 9.06
069 Printing Paper	0.4279	161.82	161.82	162.79	+	0.00	- 0.60
070 Hard Board	0.1579	197.92	197.92	197.92	+	0.00	+ 0.00
071 Coke	0.2797	163.45	163.45	163.45	+	0.00	+ 0.00
072 Motor Spirit	1.5336	106.00	120.33	118.71	-	11.91	- 10.71
073 Diesel Oil	5.2664	134.76	142.84	175.03	-	5.66	- 23.01
074 Kerosene Oil	0.2151	115.11	115.11	178.93	+	0.00	- 35.67
075 Furnace Oil	3.2664	51.43	48.20	100.86	+	6.70	- 49.01
076 Mobil Oil	0.7114	196.00	196.00	200.74	+	0.00	- 2.36
077 Chemicals	1.7720	182.47	183.07	196.79	-	0.33	- 7.28
078 Dyeing Material	0.1539	146.55	146.55	146.55	+	0.00	+ 0.00
079 Fertilizers	2.8657	264.83	266.79	273.84	-	0.73	- 3.29
080 Pesticides	0.2763	312.37	312.37	290.39	+	0.00	+ 7.57
081 Insecticides	0.1276	133.20	129.81	142.24	+	2.61	- 6.36
082 Paints & Varnishes	0.1916	295.36	295.36	291.17	+	0.00	+ 1.44
083 Medicines	1.1428	156.79	153.18	145.19	+	2.36	+ 7.99
084 Soaps & Detergents	0.8168	182.03	183.70	178.14	-	0.91	+ 2.18
085 Auto Tyres	0.2703	184.65	186.64	192.43	-	1.07	- 4.04
086 Plastic Products	0.4550	226.58	226.58	222.47	+	0.00	+ 1.85
087 Glass sheets	0.2089	231.30	231.30	228.76	+	0.00	+ 1.11
088 Other Glass Articles	0.1635	243.63	243.63	243.63	+	0.00	+ 0.00
089 Ceramics & Sanitary Fixture	0.0244	227.51	227.51	218.62	+	0.00	+ 4.07
090 Bricks, Blocks & Tiles	0.1566	217.05	216.02	208.60	+	0.48	+ 4.05
091 Cement	1.8145	206.40	206.70	206.83	-	0.15	- 0.21
092 Bed Foam	0.0006	167.67	167.67	156.67	+	0.00	+ 7.02
093 Matches	0.0505	162.62	162.62	143.20	+	0.00	+ 13.56
Metal Product, Machinery & Equipment	8.7156	170.45	170.44	173.00	+	0.01	- 1.47
094 Pig Iron	0.0593	128.97	128.97	128.97	+	0.00	+ 0.00
095 Steel Bar & Sheets	1.4022	123.70	123.59	140.43	+	0.09	- 11.91
096 Pipe Fittings	0.0780	193.06	193.06	191.94	+	0.00	+ 0.58
097 Steel Products	0.3879	176.80	176.83	173.80	-	0.02	+ 1.73
098 Engines & Motors	0.0046	109.24	109.24	109.07	+	0.00	+ 0.16
099 Vacuum Pumps	0.0155	114.95	115.39	115.39	-	0.38	- 0.38
100 Air Conditioners	0.0049	201.18	200.18	196.18	+	0.50	+ 2.55
101 Cultivators	0.0551	219.76	219.76	219.76	+	0.00	+ 0.00
102 Chuff Cutter	0.1293	149.20	149.20	149.20	+	0.00	+ 0.00
103 Tractors	0.0028	205.43	205.43	214.54	+	0.00	- 4.25
104 Lathe Machines	0.0525	208.81	208.81	208.81	+	0.00	+ 0.00
105 Concrete Mixture	0.0107	138.83	138.83	138.83	+	0.00	+ 0.00
106 Fridge, WashM, SewM, Fans, Iron	1.1645	199.37	199.42	198.16	-	0.03	+ 0.61
107 Electric Wires	0.0912	195.19	195.19	190.87	+	0.00	+ 2.26
108 Lighting Equipments	1.4431	167.30	167.30	168.19	+	0.00	- 0.53
109 Radio & Television	0.1843	126.49	126.49	126.49	+	0.00	+ 0.00
110 Motor Vehicles	0.0244	185.25	185.25	183.03	+	0.00	+ 1.21
111 Motorcycles	0.2570	125.89	125.89	128.20	+	0.00	- 1.80
112 Bicycles	3.3483	185.63	185.63	185.63	+	0.00	+ 0.00