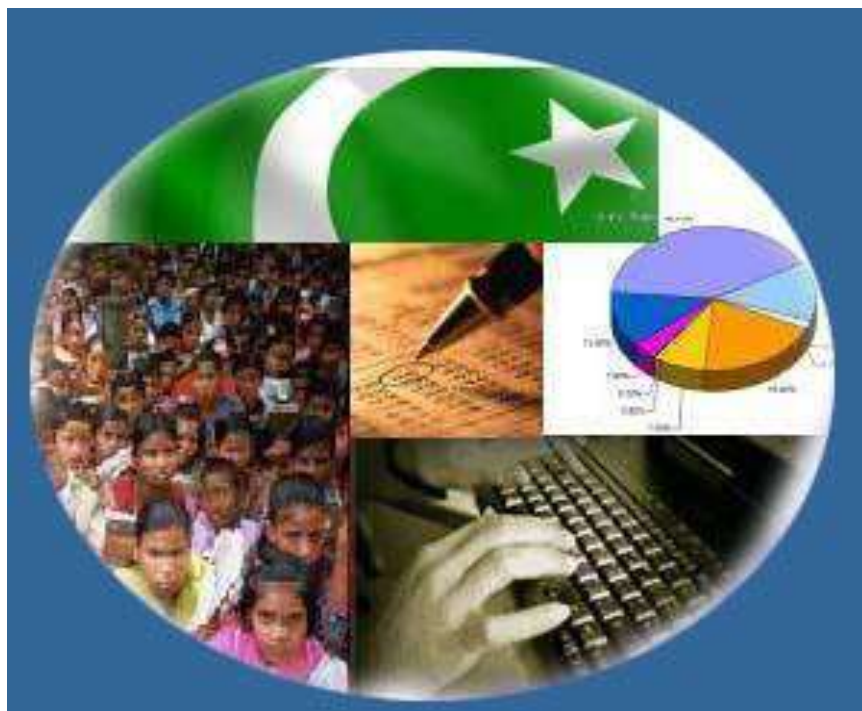




Monthly Review on Price Indices



November, 2015
(Base 2007-08)

Government of Pakistan
Statistics Division
Pakistan Bureau of Statistics
Islamabad

Inflation in Brief

1. CPI inflation, General increased by 2.7% on year-on-year basis in November 2015 as compared to an increase 1.6% in the previous month and 4.0% in November 2014. On month-on-month basis, it increased by 0.6% in November 2015 as compared to increase of 0.5% in the previous month and decrease of 0.5% in November 2014.
2. Core inflation measured by non-food non-energy CPI (Core NFNE) increased by 4.0% on (YoY) basis in November 2015 as compared to increase 3.4% in the previous month and 6.9% in November 2014. On (MoM) basis, it increased by 0.1% in November 2015 as compared to increase of 0.6% in the previous month and decrease of 0.5% in November 2014.
3. Core inflation, measured by 20% weighted trimmed mean CPI (Core Trimmed) increased by 2.9% on (YoY) basis in November 2015 as compared to 2.8% in the previous month and by 5.3% in November 2014. On (MoM) basis, it increased by 0.2% in November 2015 as compared to increase of 0.4% in the previous month and 0.1% in November 2014.
4. SPI inflation on YoY increased by 2.1% in November 2015 as compared to decrease of 0.1% a month earlier and a decrease of 0.3% in November 2014. On MoM basis, it increased by 1.1% in November 2015 as compared to a increase of 1.2% a month earlier and decrease of 1.1% in November 2014.
5. WPI inflation on YoY basis decreased by 1.7% in November 2015 as compared to decrease of 2.7% a month earlier and an increase of 0.01% in November 2014. WPI inflation on MoM basis increased by 0.01% in November 2015 as compared to increase of 0.5% a month earlier and decrease of 1.0% in November 2014.
6. Figures 1 and 2 show graphically the data of Table 1. Table 1.1 shows "Period Average" and "YoY" percent changes in indices of three years.

Table 1: Inflation (%) (Base 2007-08)

Period	CPI						Core Inflation				SPI**		WPI	
	General		Food		Non-food		NFNE*		Trimmed		YoY	MoM	YoY	MoM
	YoY	MoM	YoY	MoM	YoY	MoM	YoY	MoM	YoY	MoM				
Oct 14	5.8	0.2	5.2	-0.2	6.3	0.5	7.8	0.7	6.0	0.4	4.1	0.0 ¹	1.3	-0.3
Nov 14	4.0	-0.5	2.1	-0.4	5.4	-0.6	6.9	-0.5	5.3	0.1	-0.3	-1.1	0.0 ²	-1.0
Dec 14	4.3	-1.0	3.4	-2.1	4.9	-0.2	6.7	0.1	5.2	0.0	0.8	-1.5	-0.9	-1.9
Jan 15	3.9	0.1	3.0	-0.5	4.5	0.5	6.4	0.7	4.8	0.3	1.1	-0.9	-2.4	-1.0
Feb 15	3.2	-0.9	2.1	-1.8	4.0	-0.3	6.2	0.0	4.2	-0.2	0.2	-1.0	-3.4	-1.1
Mar 15	2.5	0.2	0.5	0.5	3.9	0.0	5.9	0.1	3.8	0.0	-1.9	0.0	-3.7	0.0 ³
Apr 15	2.1	1.3	0.0	1.4	3.7	1.3	5.4	1.4	3.1	0.6	-1.6	0.4	-2.9	0.9
May 15	3.2	0.8	3.0	1.8	3.3	0.0	4.9	0.0	3.9	0.1	1.2	1.3	-1.8	1.1
Jun-15	3.2	0.6	3.2	1.2	3.2	0.2	4.6	0.1	3.8	0.2	1.1	1.0	-2.0	1.2
Jul-15	1.9	0.4	0.6	0.1	2.8	0.6	4.1	0.6	2.9	0.5	-0.5	0.3	-2.9	-0.4
Aug-15	1.8	0.2	0.4	0.3	2.8	0.2	4.0	0.1	2.8	0.1	-1.5	-0.2	-2.9	-0.5
Sep-15	1.3	-0.1	-0.1	-0.4	2.4	0.1	3.4	0.1	2.8	0.1	-1.3	0.5	-3.5	-0.4
Oct 15	1.6	0.5	0.5	0.4	2.4	0.5	3.4	0.6	2.8	0.4	-0.1	1.2	-2.7	0.5
Nov 15	2.7	0.6	2.2	1.2	3.2	0.2	4.0	0.1	2.9	0.2	2.1	1.0	-1.7	0.0 ⁴

*NFNE is non-food non-energy, ** SPI for quintile 1 ¹ Actual figure is -0.03, displayed in rounded figure

²Actual figure is 0.01, ³Actual figure is 0.01 displayed in rounded figure, ⁴Actual figure is 0.01 displayed in rounded figure

Table 1.1 : Period Average and YoY % Changes of Indices (Base 2007-08)

Index	Averages July-Nov % Changes			Nov over Nov % Changes		
	2015-16	2014-15	2013-14	2015-16	2014-15	2013-14
CPI	1.86	6.45	8.84	2.73	3.96	10.90
SPI	-0.26	4.01	10.66	2.06	-0.27	14.07
WPI	-2.73	2.74	8.74	-1.67	0.02	10.44

Figure 1: CPI Inflation YoY, Special Indices

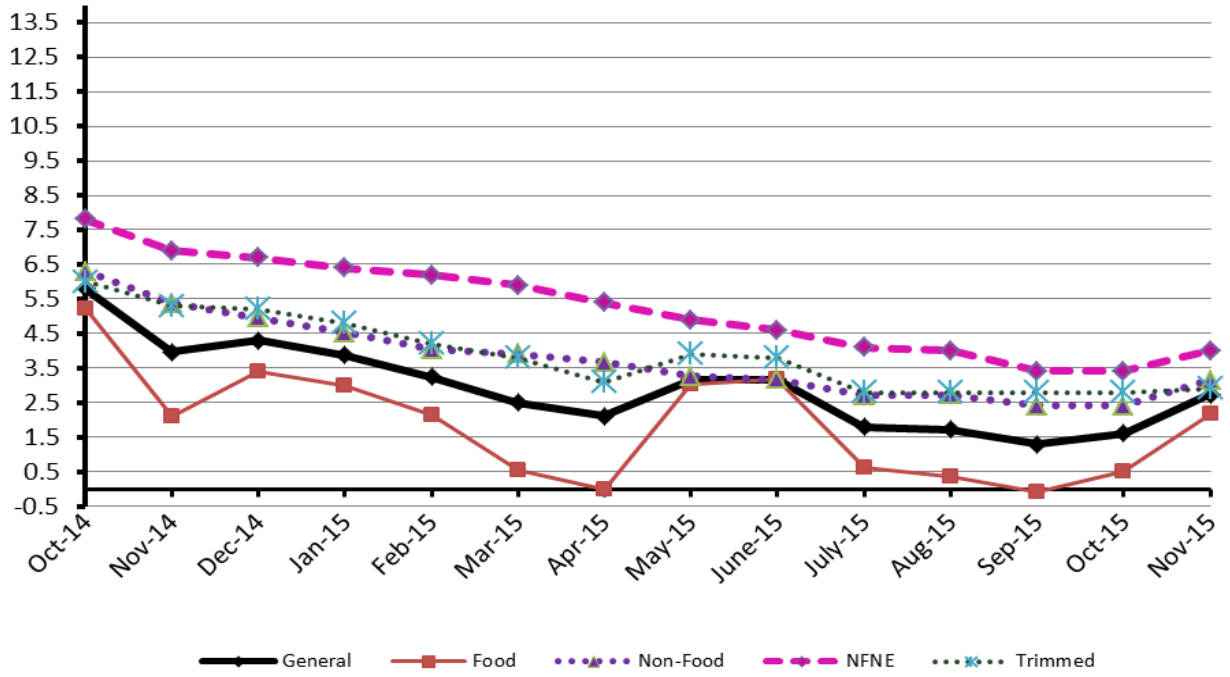
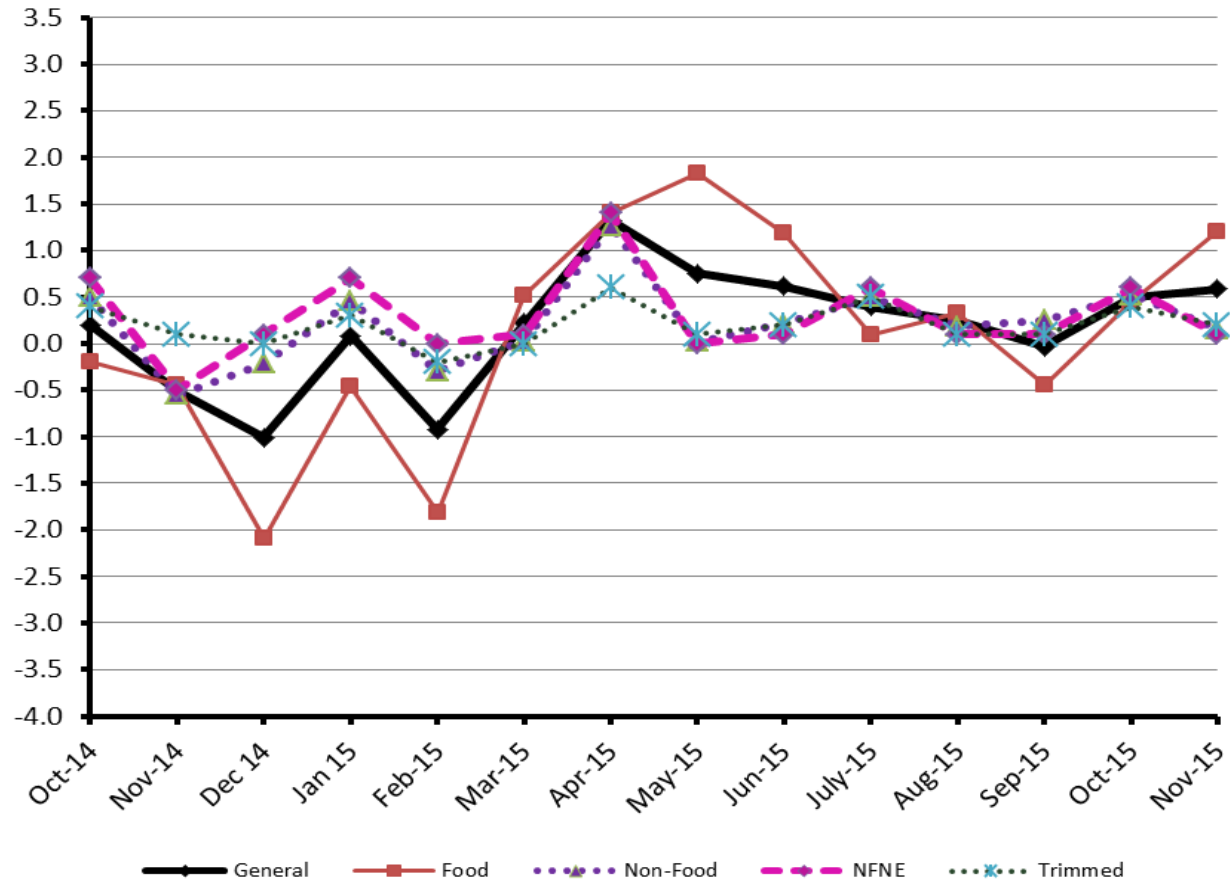


Figure 2: CPI Inflation MoM, Special Indices



II. Consumer Price Index (CPI)

The Consumer Price Index of November, 2015 has increased by 0.59% over October 2015 and increased by 2.73% over corresponding month of the last year, i.e. November 2014.

Table 2 : Consumer Price Index by Group of Commodities and Services (Base 2007-08)

No	Group	Group Weight (%)	Indices			% Change Nov 2015 Over		Impact (In % points) Nov 2015 Over	
			Nov 2015	Oct 2015	Nov 2014	Oct 2015	Nov 2014	Oct 2015	Nov 2014
	General	100.00	204.22	203.03	198.79	0.59	2.73	0.59	2.73
1.	Food & Non-alcoholic Bev.	34.83	223.17	220.40	220.25	1.26	1.33	0.46	0.51
	<i>Non-perishable Food Items</i>	29.84	218.60	216.68	216.69	0.89	0.88	0.28	0.29
	<i>Perishable Food Items</i>	4.99	250.51	243.19	241.56	3.01	3.71	0.18	0.22
2.	Alcoholic Bev.& Tobacco	1.41	312.26	309.96	266.65	0.74	17.10	0.02	0.32
3.	Clothing & Footwear	7.57	222.75	221.89	213.01	0.39	4.57	0.03	0.37
4.	Housing, Water, Electricity, Gas & Fuels	29.41	182.66	182.62	174.01	0.02	4.97	0.01	1.28
5.	Furnishing & Household Equipment Maintenance	4.21	215.78	215.49	208.26	0.13	3.61	0.01	0.16
6.	Health	2.19	180.59	179.67	175.37	0.51	2.98	0.01	0.06
7.	Transport	7.20	177.09	175.80	190.59	0.73	-7.08	0.05	-0.49
8.	Communication	3.22	130.39	130.36	129.99	0.02	0.31	0.00	0.01
9.	Recreation & Culture	2.02	193.66	193.55	189.55	0.06	2.17	0.00	0.04
10.	Education	3.94	209.25	209.25	192.41	0.00	8.75	0.00	0.33
11.	Restaurants & Hotels	1.23	254.36	253.30	242.78	0.42	4.77	0.01	0.07
12.	Miscellaneous	2.76	225.02	225.79	220.35	-0.34	2.12	-0.01	0.06

Main contributors to month-on-month and year-on-year percentage changes are given below and detail is given in Annexure A.

1. **Month-on-month** Top few commodities which varied from previous month i.e. October 2015 are given below:-

Food Items Increased: Chicken (21.13%), Tomatoes (18.12%), Onions (14.61%), Potatoes (12.82%), Eggs (10.68%), Besan (3.69%), Vegetables (3.26%), Tea (3.14%), Pulse Mash (2.90%), Pulse Gram (2.51%), Fish (2.39%), Betel Leaves & Nuts (1.88%), Wheat Flour (1.49%), Wheat (1.46%), Gram Whole (1.39%) and Dry Fruits (1.06%).

Decreased: Fresh Fruits (7.78%), Gur (4.20%), Sugar (3.72%), Rice (3.62%) and Cooking Oil (1.31%).

Non-food Items Increased: Woolen Readymade Garments (2.52%), Motor Fuel (1.99%), Construction Wage Rates (1.40%), Doctor MBBS Clinic Fee (1.21%) and Kerosene Oil (1.11%).

Decreased: Personal Equipments (1.05%).

2. **Year-on-Year:** Top few commodities which varied from previous year i.e. November 2014 are given below:-

Food Items Increased: Tomatoes (95.45%), Onions (83.90%), Pulse Gram (56.35%), Besan (50.50%), Pulse Mash (38.30%), Tea (27.35%), Gram Whole (21.32%) and Cigarettes (17.23%)

Decreased: Potatoes (45.59%), Rice (19.15%), Cooking Oil (16.57%), Eggs (14.17%) and Vegetable Ghee (12.41%).

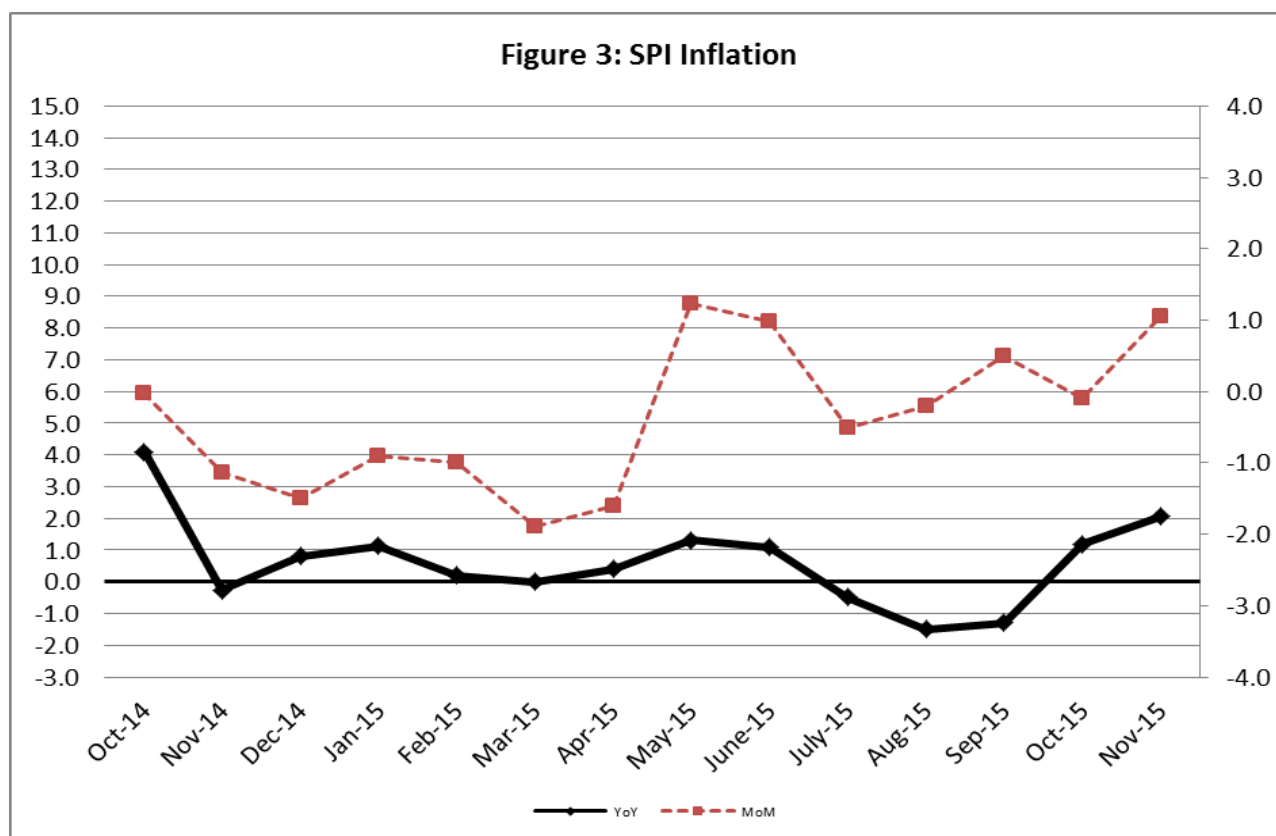
Non-food Items Increased: Sewing Needle & Dry Cell (9.96%), Gas (9.92%), Construction Wage Rates (9.30%), Tailoring (8.83%), and Education (8.75%).

Decreased: Kerosene Oil (18.93%) and Motor Fuel (14.38%).

III. Sensitive Price Indicator

Quintile-wise percentage changes YoY and MoM are given below in Table 3. The series from October 2014 to November 2015 is also graphed below in Figure 3.

Table 3 : Sensitive Price Indicator (Base 2007-08)					
Quintiles	Indices			% Change November 2015 over	
	November 2015	October 2015	November 2014	October 2015	November 2014
1	211.11	209.02	206.84	1.00	2.06
2	218.16	216.02	212.73	0.99	2.55
3	218.97	216.72	215.65	1.04	1.54
4	223.31	220.94	217.17	1.07	2.83
5	219.81	217.31	214.69	1.15	2.38
Combined	219.37	217.02	214.45	1.08	2.29



IV. Wholesale Price Index

The Wholesale Price Index for November 2015 is increased by 0.01% over October, 2015. It is decreased by 1.67% over the corresponding month of the last year. YoY and MoM movements, from October, 2014 to November 2015 are also graphed below in Figure 4.

Table 4 : Wholesale Price Index by Group of Commodities (Base 2007-08)									
No.	Group	Group Weight (%)	Indices			% Change November, 2015 over		Impact (in %age points) November, 2015 over	
			Nov. 2015	Oct. 2015	Nov. 2014	Oct. 2015	Nov. 2014	Oct. 2015	Nov. 2014
	General	100.00	208.72	208.69	212.26	0.01	-1.67	0.01	-1.67
1.	Agriculture, Forestry & Fishery Products	25.77	226.06	228.36	219.26	-1.01	3.10	-0.28	0.82
2.	Ores & Minerals, Electricity, Gas & Water	12.04	246.98	246.91	247.62	0.03	-0.26	0.00	-0.04
3.	Food Products, Beverages & Tobacco, Textiles, Apparel & Leather Products	31.11	212.98	211.04	207.90	0.92	2.44	0.29	0.75
	i. Food Products, Bev. & Tobacco	20.07	224.90	224.28	216.60	0.28	3.83	0.06	0.78
	ii. Textiles and Apparel	10.33	190.89	186.28	191.71	2.47	-0.43	0.23	-0.04
	iii. Leather Products	0.71	197.58	196.88	197.27	0.36	0.16	0.00	0.00
4.	Other Transportable Goods except Metal Products, Machinery & Equipment	22.37	176.87	176.74	206.62	0.07	-14.40	0.01	-3.13
5.	Metal Products, Machinery & Equipment	8.72	171.09	171.31	172.72	-0.13	-0.94	-0.01	-0.07

Main contributors to month-on-month and year-on-year percentage changes are given below and detail is given in Annexure B.

1. **Month-on-month** Top few commodities which varied from previous month i.e. October, 2015 are given below:-

Increased: Poultry (23.67%), Potatoes (11.38%), Woolen carpets (8.11%), Eggs (6.26%), Coffee & Tea (5.53%), Cotton Yarn (5.31%), Oil Cakes (5.30%), Blanket (3.42%), Motor Spirit (3.39%), Cotton Seeds (3.35%), Wool (3.17%) and Wheat (3.09%).

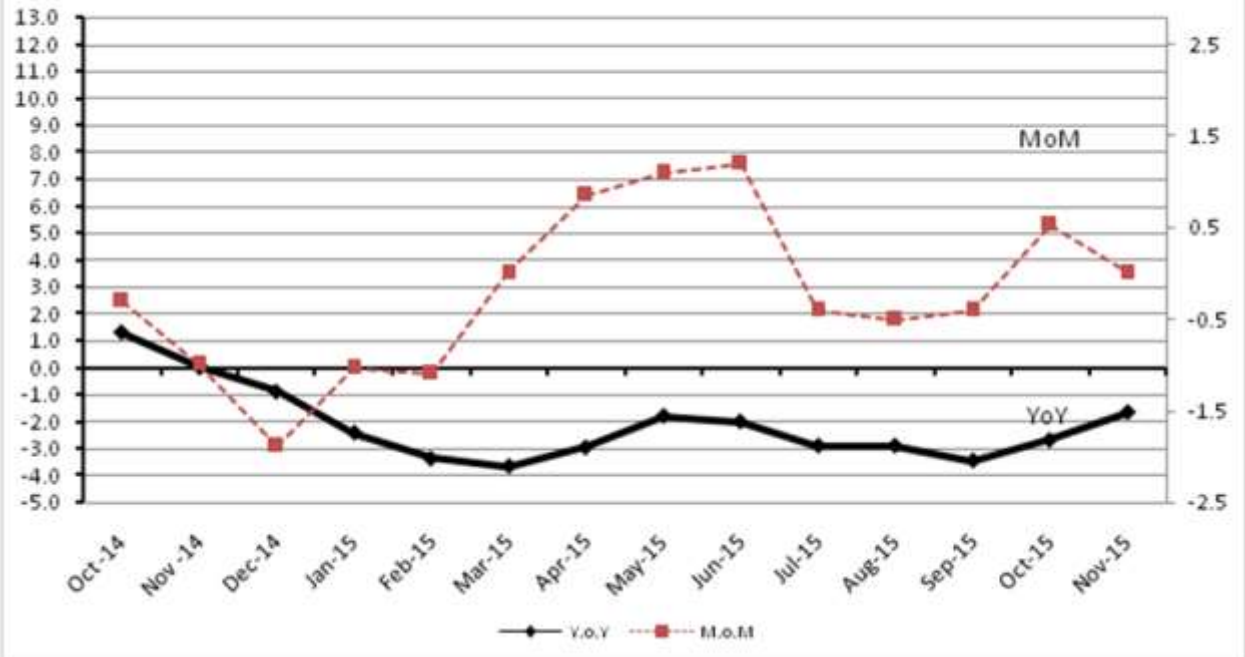
Decreased: Fresh Fruits (18.46%), Stimulant & Spices (12.11%), Jowar (7.38%), Bajra (5.93%), Rice (4.78%) and Furnace Oil (4.54%).

2. **Year-on-year** Top few commodities which varied from previous year i.e. November, 2014 are given below:-

Increased: Other Cereal Flour (60.22%), Coffee & Tea (38.23%), Cotton Seeds (33.16%), Fish (30.59%), Tobacco Products (22.69%), Pulses (21.47%), Pesticides (17.12%) and Sugar Confectionary (16.18%).

Decreased: Potatoes (57.64%), Furnace Oil (51.97%), Kerosene Oil (40.15%), Diesel (27.00%), Stimulant & Spice Crops (25.69%), Insecticides (24.10%) and Rice (21.02%).

Figure 4: WPI Inflation



Annexure A: Consumer Price Index Numbers by Commodity Groups & Commodities (2007-08=100)

Item and Specification	Weight	Index Numbers			% Change in Nov 2015 over			
		Nov 15	Oct 15	Nov 14	Oct 2015	Nov 2014		
General	100.0000	204.22	203.03	198.79	+	0.59	+	2.73
Food and non-alcoholic Beverages	34.8343	223.17	220.40	220.25	+	1.26	+	1.33
01 Wheat	0.3477	202.99	200.07	211.83	+	1.46	-	4.17
02 Wheat Flour	4.1648	216.28	213.10	222.97	+	1.49	-	3.00
03 Wheat Product	0.0959	216.05	214.59	219.98	+	0.68	-	1.79
04 Besan	0.1500	259.87	250.61	172.67	+	3.69	+	50.50
05 Rice	1.5821	158.55	164.50	196.10	-	3.62	-	19.15
06 Cereals	0.1563	244.41	244.03	239.07	+	0.16	+	2.23
07 Bakery & Confectionary	1.1550	210.04	209.83	206.65	+	0.10	+	1.64
08 Nimco	0.4574	242.93	241.54	238.29	+	0.58	+	1.95
09 Meat	2.4303	255.84	255.19	243.83	+	0.25	+	4.93
10 Chicken	1.3596	174.41	143.98	173.51	+	21.13	+	0.52
11 Fish	0.2970	219.78	214.66	217.91	+	2.39	+	0.86
12 Milk Fresh	6.6800	257.02	256.89	247.74	+	0.05	+	3.75
13 Milk Products	0.6338	249.39	248.48	242.95	+	0.37	+	2.65
14 Milk Powder	0.1129	231.58	230.26	225.38	+	0.57	+	2.75
15 Eggs	0.4555	201.40	181.97	234.65	+	10.68	-	14.17
16 Mustard Oil	0.0952	155.03	154.04	158.89	+	0.64	-	2.43
17 Cooking Oil	1.7538	133.44	135.21	159.95	-	1.31	-	16.57
18 Vegetable Ghee	2.0714	135.99	137.08	155.25	-	0.80	-	12.41
19 Dry Fruits	0.2543	255.10	252.42	246.55	+	1.06	+	3.47
20 Fresh Fruits	1.8649	200.95	217.91	218.51	-	7.78	-	8.04
21 Pulse Masoor	0.2712	201.38	199.45	186.28	+	0.97	+	8.11
22 Pulse Moong	0.2336	300.34	300.95	295.69	-	0.20	+	1.57
23 Pulse Mash (Washed)	0.2098	317.19	308.24	229.35	+	2.90	+	38.30
24 Pulse Gram	0.2361	269.43	262.84	172.33	+	2.51	+	56.35
25 Gram Whole	0.1616	217.36	214.37	179.16	+	1.39	+	21.32
26 Beans	0.0269	233.73	233.73	245.30	+	0.00	-	4.72
27 Potatoes	0.4416	234.45	207.81	430.89	+	12.82	-	45.59
28 Onion	0.5057	373.92	326.26	203.33	+	14.61	+	83.90
29 Tomatoes	0.4136	275.88	233.56	141.15	+	18.12	+	95.45
30 Fresh Vegetables	1.7651	265.60	257.22	253.04	+	3.26	+	4.96
31 Sugar	1.0445	213.03	221.27	205.96	-	3.72	+	3.43
32 Gur	0.0220	278.99	291.22	263.18	-	4.20	+	6.01
33 Honey	0.0446	305.40	304.38	300.07	+	0.34	+	1.78
34 SweetMeat	0.2483	238.79	238.40	231.95	+	0.16	+	2.95
35 Beverages	1.1990	217.39	217.86	206.90	-	0.22	+	5.07
36 Jam, Tomato Ketchup & Pickles	0.2454	211.59	211.33	202.38	+	0.12	+	4.55
37 Condiments	0.2656	259.27	258.82	251.93	+	0.17	+	2.91
38 Spices	0.5441	237.23	237.30	234.33	-	0.03	+	1.24
39 Tea	0.8377	273.45	265.12	214.72	+	3.14	+	27.35
Alcoholic Beverages, Tobacco	1.4135	312.26	309.96	266.65	+	0.74	+	17.10
40 Cigarettes	1.3906	313.74	311.47	267.63	+	0.73	+	17.23
41 Betel Leaves & Nuts	0.0229	222.55	218.45	207.58	+	1.88	+	7.21
Clothing and footwear	7.5708	222.75	221.89	213.01	+	0.39	+	4.57
42 Cotton Cloth	1.7286	215.40	215.33	207.27	+	0.03	+	3.92
43 Woolen Cloth	0.8759	237.76	236.95	230.53	+	0.34	+	3.14
44 Readymade Garments	0.9739	227.22	226.37	212.79	+	0.38	+	6.78
45 Woolen Readymade Garments	0.3964	252.19	245.98	234.72	+	2.52	+	7.44
46 Hosiery	0.5094	236.08	235.05	224.72	+	0.44	+	5.06
47 Dopatta	0.4412	235.00	234.91	229.61	+	0.04	+	2.35
48 Cleaning and Laundry	0.2110	246.39	245.70	235.28	+	0.28	+	4.72
49 Tailoring	0.8840	285.69	283.94	262.50	+	0.62	+	8.83
50 Footwear	1.5504	165.14	165.10	164.29	+	0.02	+	0.52
Housing, water, Elec., Gas and	29.4149	182.66	182.62	174.01	+	0.02	+	4.97
51 House Rent	21.8149	170.85	170.85	162.06	+	0.00	+	5.42
52 Construction Input Items	0.5623	241.85	241.36	236.32	+	0.20	+	2.34
53 Construction Wage Rates	0.3331	223.39	220.31	204.38	+	1.40	+	9.30
54 Water Supply	0.4971	149.92	149.92	149.92	+	0.00	+	0.00
55 Electricity	4.3985	238.10	238.10	231.52	+	0.00	+	2.84
56 Gas	1.5756	158.08	158.08	143.81	+	0.00	+	9.92
57 Kerosene Oil	0.0057	211.04	208.72	260.32	+	1.11	-	18.93
58 Firewood Whole	0.2277	279.21	278.99	268.99	+	0.08	+	3.80

Annexure A: Consumer Price Index Numbers by Commodity Groups & Commodities (2007-08=100)

Item and Specification	Weight	Index Numbers			% Change in Nov 2015 over			
		Nov 15	Oct 15	Nov 14	Oct 2015	Nov 2014		
Furnishing and household equi	4.2082	215.78	215.49	208.26	+	0.13	+	3.61
59 Furniture	0.3315	207.09	206.70	200.00	+	0.19	+	3.55
60 Household Textiles	0.6489	214.08	213.29	205.12	+	0.37	+	4.37
61 Household Equipment	0.5936	175.89	175.73	172.08	+	0.09	+	2.21
62 Utensils	0.3212	218.40	218.25	209.64	+	0.07	+	4.18
63 Plastic Products	0.2547	204.88	204.85	199.79	+	0.01	+	2.55
64 Washing Soaps & Detergents	0.7893	225.85	225.68	222.79	+	0.08	+	1.37
65 Sewing Needle & Dr Cell	0.1496	201.89	200.81	183.61	+	0.54	+	9.96
66 Household Servant	1.0432	237.20	237.20	226.02	+	0.00	+	4.95
67 Marriage Hall Charges	0.0762	234.20	232.49	230.24	+	0.74	+	1.72
Health	2.1868	180.59	179.67	175.37	+	0.51	+	2.98
68 Drugs & Medicines	1.2667	149.14	149.02	147.26	+	0.08	+	1.28
69 Medical Equipments	0.0080	226.66	226.26	221.31	+	0.18	+	2.42
70 Doctor (MBBS) Clinic Fee	0.5904	247.40	244.44	236.75	+	1.21	+	4.50
71 Medical Tests	0.3217	180.65	180.37	172.27	+	0.16	+	4.86
Transport	7.2023	177.09	175.80	190.59	+	0.73	-	7.08
72 Motor Vehicles	0.6630	163.03	163.02	163.75	+	0.01	-	0.44
73 Motor Vehicle Accessories	0.2439	227.45	227.21	229.63	+	0.11	-	0.95
74 Motor Fuel	3.0269	150.43	147.50	175.69	+	1.99	-	14.38
75 Mechanical Service	0.4552	219.41	218.85	209.51	+	0.26	+	4.73
76 Motor Vehicle Tax	0.1099	210.18	210.18	210.18	+	0.00	+	0.00
77 Transport Services	2.7034	197.38	197.35	206.36	+	0.02	-	4.35
Communication	3.2198	130.39	130.36	129.99	+	0.02	+	0.31
78 Postal Services	0.0662	229.93	229.93	221.37	+	0.00	+	3.87
79 Communication & Apparatus	3.1536	128.31	128.27	128.07	+	0.03	+	0.19
Recreation and culture	2.0227	193.66	193.55	189.55	+	0.06	+	2.17
80 Recreation & Culture	0.8634	128.29	128.26	128.04	+	0.02	+	0.20
81 Text Books	0.5706	290.62	290.62	280.89	+	0.00	+	3.46
82 Newspapers	0.1934	175.42	175.42	175.42	+	0.00	+	0.00
83 Stationery	0.3953	205.39	204.88	198.96	+	0.25	+	3.23
Education	3.9431	209.25	209.25	192.41	+	0.00	+	8.75
84 Education	3.9431	209.25	209.25	192.41	+	0.00	+	8.75
Restaurants and hotels	1.2286	254.36	253.30	242.78	+	0.42	+	4.77
85 Readymade Food	1.2286	254.36	253.30	242.78	+	0.42	+	4.77
Misc. goods and services	2.7550	225.02	225.79	220.35	-	0.34	+	2.12
86 Personal Care	1.4935	209.48	209.29	204.40	+	0.09	+	2.49
87 Cosmetics	0.3853	193.11	193.11	185.73	+	0.00	+	3.97
88 Blades	0.0322	190.75	190.75	185.42	+	0.00	+	2.87
89 Personal Equipments	0.8440	268.39	271.23	265.71	-	1.05	+	1.01

Annexure B: Wholesale Price Indices by Major Groups & Commodities

(2007-08=100)

Item and Specification	Weight	Index Numbers			% Change in Nov 2015 over			
		Nov 15	Oct 15	Nov 14	Oct 2015	Nov 2014		
General	100.0000	208.72	208.69	212.26	+	0.01	-	1.67
Agriculture Forestry & Fisher	25.7674	226.06	228.36	219.26	-	1.01	+	3.10
001 Wheat	0.6297	215.84	209.37	216.76	+	3.09	-	0.42
002 Maize	0.6764	185.64	191.32	191.93	-	2.97	-	3.28
003 Rice	2.4413	143.04	150.22	181.10	-	4.78	-	21.02
004 Sorghum / Jowar	0.0214	271.60	293.25	280.16	-	7.38	-	3.06
005 Millet / Bajra	0.0374	188.77	200.68	171.52	-	5.93	+	10.06
006 Vegetables	1.2441	320.31	331.56	285.84	-	3.39	+	12.06
007 Fresh Fruits	1.5144	206.96	253.80	210.77	-	18.46	-	1.81
008 Dry Fruits	0.2478	243.32	238.92	220.92	+	1.84	+	10.14
009 Cotton Seeds	1.1511	251.49	243.34	188.86	+	3.35	+	33.16
010 Other Oil Seeds	0.0722	164.88	162.75	188.07	+	1.31	-	12.33
011 Edible Roots / Potatoes	0.2540	204.98	184.04	483.87	+	11.38	-	<u>57.64</u>
012 Stimulant & Spice Crops	0.1634	269.27	306.38	362.38	-	12.11	-	25.69
013 Pulses	0.4901	245.62	243.87	202.21	+	0.72	+	21.47
014 Sugar Crops	1.0725	286.29	286.29	267.92	+	0.00	+	6.86
015 Fibre Crops	5.3169	173.76	172.23	163.54	+	0.89	+	6.25
016 Unmanufactured Tobacco	0.0742	229.69	228.38	212.62	+	0.57	+	8.03
017 Poultry	0.5633	181.52	146.78	174.87	+	23.67	+	3.80
018 Raw Milk from Bovine Animals	7.0279	254.04	254.04	250.31	+	0.00	+	1.49
019 Eggs	0.5034	205.67	193.56	241.19	+	6.26	-	14.73
020 Raw Animal Materials / Wool	0.0351	179.16	173.66	173.82	+	3.17	+	3.07
021 Hides & Fur Skins, Raw	0.4834	153.62	155.85	156.37	-	1.43	-	1.76
022 Fuel Wood in Logs	0.0179	263.57	263.57	250.46	+	0.00	+	5.23
023 Fish Live Fresh or Chilled	1.7295	339.32	339.32	259.83	+	0.00	+	30.59
Ores/Minerals, Elec., Gas & W	12.0389	246.98	246.91	247.62	+	0.03	-	0.26
024 Coal not Agglomerated	0.7508	192.16	192.16	223.53	+	0.00	-	14.03
025 Natural Gas Liquified	5.7385	209.99	209.82	204.85	+	0.08	+	2.51
026 Salt & Pure Sodium Chloride	0.0584	252.31	252.31	247.16	+	0.00	+	2.08
027 Electrical Energy	5.4912	293.09	293.09	295.61	+	0.00	-	0.85
Food, Beverages, Tobacco, Textil	31.1122	212.98	211.04	207.90	+	0.92	+	2.44
Food Products, Beverages &	20.0718	224.90	224.28	216.60	+	0.28	+	3.83
028 Meat of Animals	3.4559	266.98	266.98	257.41	+	0.00	+	3.72
029 Vegetables & Fruit Juice	0.0058	201.03	200.95	196.79	+	0.04	+	2.15
030 Dried Fruits & Nuts	0.1733	232.47	230.84	227.45	+	0.71	+	2.21
031 Fruit Juices	0.3880	177.53	177.53	171.93	+	0.00	+	3.26
032 Vegetable Oils Refined	1.9242	149.09	150.19	163.13	-	0.73	-	8.61
033 Vegetable Ghee	1.5632	118.02	118.43	137.39	-	0.35	-	14.10
034 Oil Cakes	0.9611	212.90	202.18	198.27	+	5.30	+	7.38
035 Processed Liquid Milk	4.4437	247.18	247.18	242.78	+	0.00	+	1.81
036 Milk & Cream in Solid Form	0.0316	216.50	216.39	222.04	+	0.05	-	2.50
037 Ice Cream	0.0047	219.91	219.91	219.91	+	0.00	+	0.00
038 Dairy Products N.E.C	0.0117	244.60	244.60	237.72	+	0.00	+	2.89
039 Wheat Flour	2.3034	202.06	197.66	202.78	+	2.23	-	0.36
040 Other Cereal Flour	0.0604	224.57	220.69	140.16	+	1.76	+	<u>60.22</u>
041 Sugar Refined	1.7975	224.95	233.67	218.74	-	3.73	+	2.84
042 Chocolate	0.0139	101.06	101.06	99.19	+	0.00	+	1.89
043 Sugar Confectionary	0.0738	118.83	118.83	102.28	+	0.00	+	16.18
044 Coffee & Tea	0.7303	259.94	246.32	188.05	+	5.53	+	38.23
045 Spices	0.1449	188.29	188.53	188.69	-	0.13	-	0.21
046 Other Food Products	0.0336	292.02	292.02	296.60	+	0.00	-	1.54
047 Mineral Water	0.0207	188.35	188.35	185.63	+	0.00	+	1.47
048 Beverages	0.6303	171.95	171.95	171.52	+	0.00	+	0.25
049 Tobacco Products	1.2998	356.45	356.45	290.52	+	0.00	+	22.69
Textiles & Apparels	10.3289	190.89	186.28	191.71	+	2.47	-	0.43
050 Cotton Yam	5.2491	178.19	169.21	186.79	+	5.31	-	4.60
051 Nylon Yam	0.1719	147.08	147.08	161.23	+	0.00	-	8.78
052 Blended Yam	0.1689	183.29	183.55	194.74	-	0.14	-	5.88
053 Woven Fabrics	0.0128	265.37	265.37	237.79	+	0.00	+	11.60
054 Cotton Fabrics	0.6343	201.65	201.65	200.51	+	0.00	+	0.57
055 Other Fabrics	1.1016	217.81	217.95	206.11	-	0.06	+	5.68
056 Silk & Reyon Fabrics	0.7350	186.80	186.80	177.28	+	0.00	+	5.37
057 Towels	0.1235	267.20	267.20	260.85	+	0.00	+	2.43

Annexure B: Wholesale Price Indices by Major Groups & Commodities

(2007-08=100)

Item and Specification	Weight	Index Numbers			% Change in Nov 2015 over			
		Nov 15	Oct 15	Nov 14	Oct 2015	Nov 2014		
058 Blankets	0.0029	243.93	235.86	232.93	+	3.42	+	4.72
059 Bed Sheets	0.0913	256.29	256.29	249.35	+	0.00	+	2.78
060 Quilts	0.0019	196.84	196.84	188.74	+	0.00	+	4.29
061 Woolen Carpets	0.0383	142.86	132.14	132.14	+	8.11	+	8.11
062 Synthetic Carpets	0.0566	129.25	126.27	126.27	+	2.36	+	2.36
063 Hosiery Products	0.8832	222.88	222.88	210.35	+	0.00	+	5.96
064 Readymade Garments	1.0576	193.27	193.27	186.77	+	0.00	+	3.48
Leather Products	0.7115	197.58	196.88	197.27	+	0.36	+	0.16
065 Leather Without Hair	0.2973	221.97	221.97	215.02	+	0.00	+	3.23
066 Other Leather N.E.C	0.2567	206.27	206.27	215.39	+	0.00	-	4.23
067 Footwear	0.1575	137.38	134.22	134.22	+	2.35	+	2.35
Other Transportable Goods	22.3659	176.87	176.74	206.62	+	0.07	-	14.40
068 Timber	0.0165	214.43	213.18	190.70	+	0.59	+	12.44
069 Printing Paper	0.4279	164.56	164.56	169.34	+	0.00	-	2.82
070 Hard Board	0.1579	197.92	197.92	229.17	+	0.00	-	13.64
071 Coke	0.2797	163.45	163.45	163.45	+	0.00	+	0.00
072 Motor Spirit	1.5336	128.80	124.58	159.11	+	3.39	-	19.05
073 Diesel Oil	5.2664	172.03	170.11	235.67	+	1.13	-	27.00
074 Kerosine Oil	0.2151	152.12	152.12	254.18	+	0.00	-	40.15
075 Furnace Oil	3.2664	75.72	79.32	157.65	-	4.54	-	51.97
076 Mobil Oil	0.7114	199.78	199.78	201.53	+	0.00	-	0.87
077 Chemicals	1.7720	185.92	186.09	198.36	-	0.09	-	6.27
078 Dyeing Material	0.1539	146.55	146.55	143.77	+	0.00	+	1.93
079 Fertilizers	2.8657	273.25	274.03	270.69	-	0.28	+	0.95
080 Pesticides	0.2763	312.37	312.37	266.71	+	0.00	+	17.12
081 Insecticides	0.1276	134.66	138.59	177.41	-	2.84	-	24.10
082 Paints & Varnishes	0.1916	295.36	295.36	280.05	+	0.00	+	5.47
083 Medicines	1.1428	146.67	146.38	144.94	+	0.20	+	1.19
084 Soaps & Detergents	0.8168	181.33	180.67	177.83	+	0.37	+	1.97
085 Auto Tyres	0.2703	192.83	192.83	188.28	+	0.00	+	2.42
086 Plastic Products	0.4550	231.05	231.05	214.92	+	0.00	+	7.51
087 Glass sheets	0.2089	231.30	231.30	209.86	+	0.00	+	10.22
088 Other Glass Articles	0.1635	243.63	243.63	230.45	+	0.00	+	5.72
089 Ceramics & Sanitary Fixture	0.0244	227.13	227.13	212.17	+	0.00	+	7.05
090 Bricks, Blocks & Tiles	0.1566	217.09	216.83	205.47	+	0.12	+	5.66
091 Cement	1.8145	206.79	206.70	209.76	+	0.04	-	1.42
092 Bed Foam	0.0006	156.67	156.67	155.17	+	0.00	+	0.97
093 Matches	0.0505	162.62	162.62	143.20	+	0.00	+	13.56
Metal Product, Machinery & Eq	8.7156	171.09	171.31	172.72	-	0.13	-	0.94
094 Pig Iron	0.0593	128.97	128.97	128.97	+	0.00	+	0.00
095 Steel Bar & Sheets	1.4022	127.63	129.32	148.95	-	1.31	-	14.31
096 Pipe Fittings	0.0780	195.10	192.08	191.94	+	1.57	+	1.65
097 Steel Products	0.3879	173.54	173.54	173.80	+	0.00	-	0.15
098 Engines & Motors	0.0046	109.07	109.07	109.07	+	0.00	+	0.00
099 Vacuum Pumps	0.0155	115.39	115.39	115.39	+	0.00	+	0.00
100 Air Conditioners	0.0049	200.18	200.18	195.53	+	0.00	+	2.38
101 Cultivators	0.0551	219.76	219.76	226.90	+	0.00	-	3.15
102 Chuff Cutter	0.1293	149.20	149.20	149.20	+	0.00	+	0.00
103 Tractors	0.0028	205.43	205.43	214.54	+	0.00	-	4.25
104 Lathe Machines	0.0525	208.81	208.81	208.81	+	0.00	+	0.00
105 Concrete Mixture	0.0107	138.83	138.83	138.83	+	0.00	+	0.00
106 Fridge, WashM, SewM, Fans, Iron	1.1645	200.43	200.25	197.85	+	0.09	+	1.30
107 Electric Wires	0.0912	195.19	195.19	184.79	+	0.00	+	5.63
108 Lighting Equipments	1.4431	167.30	167.30	165.30	+	0.00	+	1.21
109 Radio & Television	0.1843	126.49	126.49	126.49	+	0.00	+	0.00
110 Motor Vehicles	0.0244	183.03	183.03	183.03	+	0.00	+	0.00
111 Motorcycles	0.2570	125.89	125.89	126.92	+	0.00	-	0.81
112 Bicycles	3.3483	185.63	185.63	182.84	+	0.00	+	1.53