



Monthly Review on Price Indices



March, 2015
(Base 2007-08)

Government of Pakistan
Statistics Division
Pakistan Bureau of Statistics
Islamabad

Inflation in Brief

1. CPI inflation, General, increased by 2.5% on year-on-year basis in March 2015 as compared to 3.2% in the previous month and by 8.5% in March 2014. On month-on-month basis, it increased by 0.2% in March 2015 as compared to decrease of 0.9% in the previous month and increase of 1.0% in March 2014.
2. Core inflation measured by non-food non-energy CPI (Core NFNE) increased by 5.9% on (YoY) basis in March 2015 as compared to 6.2% in the previous month and by 7.6% in March 2014. On (MoM) basis, it increased by 0.1% in March 2015 as compared to no change in the previous month and 0.3% in March 2014.
3. Core inflation, measured by 20% weighted trimmed mean CPI (Core Trimmed) increased by 3.8% on (YoY) basis in March 2015 as compared to 4.2% in the previous month and by 8.1% in March 2014. On (MoM) basis, it shows no increase in March 2015 as compared to decrease of 0.2% in the previous month and an increase of 0.3% in March 2014.
4. SPI inflation on YoY decreased by 1.9% in March 2015 as compared to increase of 0.2% a month earlier and of 9.0% in March 2014. On MoM basis, it shows no change in March 2015 as compared to decrease of 1.0% a month earlier and increase of 2.1% in March 2014.
5. WPI inflation on YoY basis decreased by 3.7% in March 2015 as compared to decrease of 3.4% a month earlier and an increase of 7.7% in March 2014. WPI inflation on MoM basis it shows no change in March 2015 as compared to decrease of 1.1% a month earlier and increase of 0.3% in March 2014.
6. Figures 1 and 2 show graphically the data of Table 1. Table 1.1 shows "Period Average" and "YoY" percent changes in indices of three years.

Table 1: Inflation (%) (Base 2007-08)

Period	CPI						Core Inflation				SPI**		WPI	
	General		Food		Non-food		NFNE*		Trimmed		YoY	MoM	YoY	MoM
	YoY	MoM	YoY	MoM	YoY	MoM	YoY	MoM	YoY	MoM				
Feb 14	7.9	-0.3	7.6	-1.0	8.2	0.2	7.8	0.2	8.1	0.2	7.5	-0.1	7.6	-0.1
Mar 14	8.5	1.0	9.3	2.1	8.0	0.2	7.6	0.3	8.1	0.3	9.0	2.1	7.7	0.3
Apr 14	9.2	1.7	9.9	2.0	8.7	1.5	8.5	1.9	9.0	0.9	9.4	0.1	7.0	0.1
May 14	8.3	-0.3	7.4	-1.2	9.0	0.4	8.7	0.5	8.3	0.3	7.7	-1.5	7.3	-0.1
Jun14	8.2	0.6	7.4	1.0	8.9	0.3	8.7	0.4	7.9	0.3	6.2	1.1	7.7	1.4
Jul 14	7.9	1.7	7.0	2.7	8.5	1.0	8.3	1.1	7.6	0.8	5.9	2.0	6.6	0.5
Aug14	7.0	0.3	5.6	0.6	8.1	0.2	7.9	0.2	7.1	0.2	5.2	0.8	3.3	-0.5
Sep14	7.7	0.4	7.2	0.0	8.0	0.6	8.1	0.7	7.1	0.2	5.4	0.2	2.7	0.2
Oct 14	5.8	0.2	5.2	-0.2	6.3	0.5	7.8	0.7	6.0	0.4	4.1	0.0 ¹	1.3	-0.3
Nov 14	4.0	-0.5	2.1	-0.4	5.4	-0.6	6.9	-0.5	5.3	0.1	-0.3	-1.1	0.0 ²	-1.0
Dec 14	4.3	-1.0	3.4	-2.1	4.9	-0.2	6.7	0.1	5.2	0.0	0.8	-1.5	-0.9	-1.9
Jan 15	3.9	0.1	3.0	-0.5	4.5	0.5	6.4	0.7	4.8	0.3	1.1	-0.9	-2.4	-1.0
Feb 15	3.2	-0.9	2.1	-1.8	4.0	-0.3	6.2	0.0	4.2	-0.2	0.2	-1.0	-3.4	-1.1
Mar 15	2.5	0.2	0.5	0.5	3.9	0.0	5.9	0.1	3.8	0.0	-1.9	0.0	-3.7	0.0 ³

*NFNE is non-food non-energy, ** SPI for quintile 1 ¹ Actual figure is -0.03, displayed in rounded figure

²Actual figure is 0.02, ³Actual figure is 0.01, displayed in rounded figure

Table 1.1 : Period Average and YoY % Changes of Indices (Base 2007-08)

Index	Averages July-March % Changes			March over March % Changes		
	2014-15	2013-14	2012-13	2014-15	2013-14	2012-13
CPI	5.12	8.64	7.98	2.49	8.53	6.57
SPI	2.25	9.83	8.00	-1.89	8.98	8.65
WPI	0.36	8.43	8.05	-3.67	7.68	7.89

Figure 1: CPI Inflation YoY, Special Indices

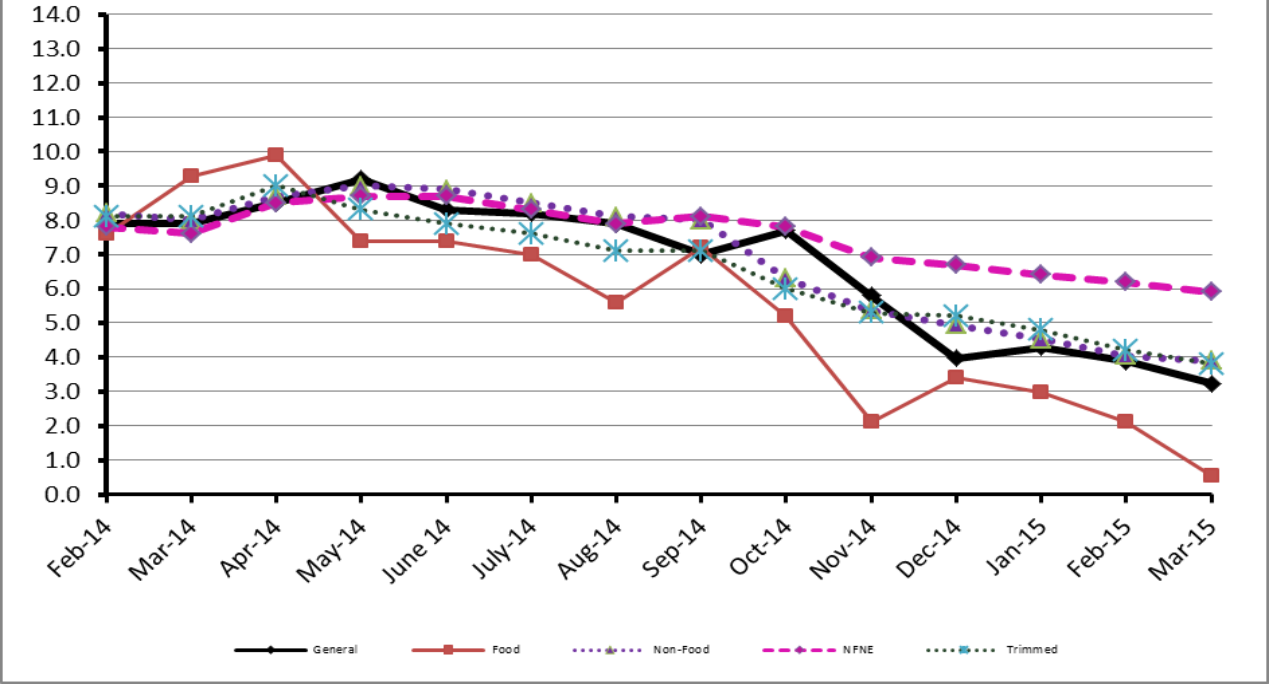
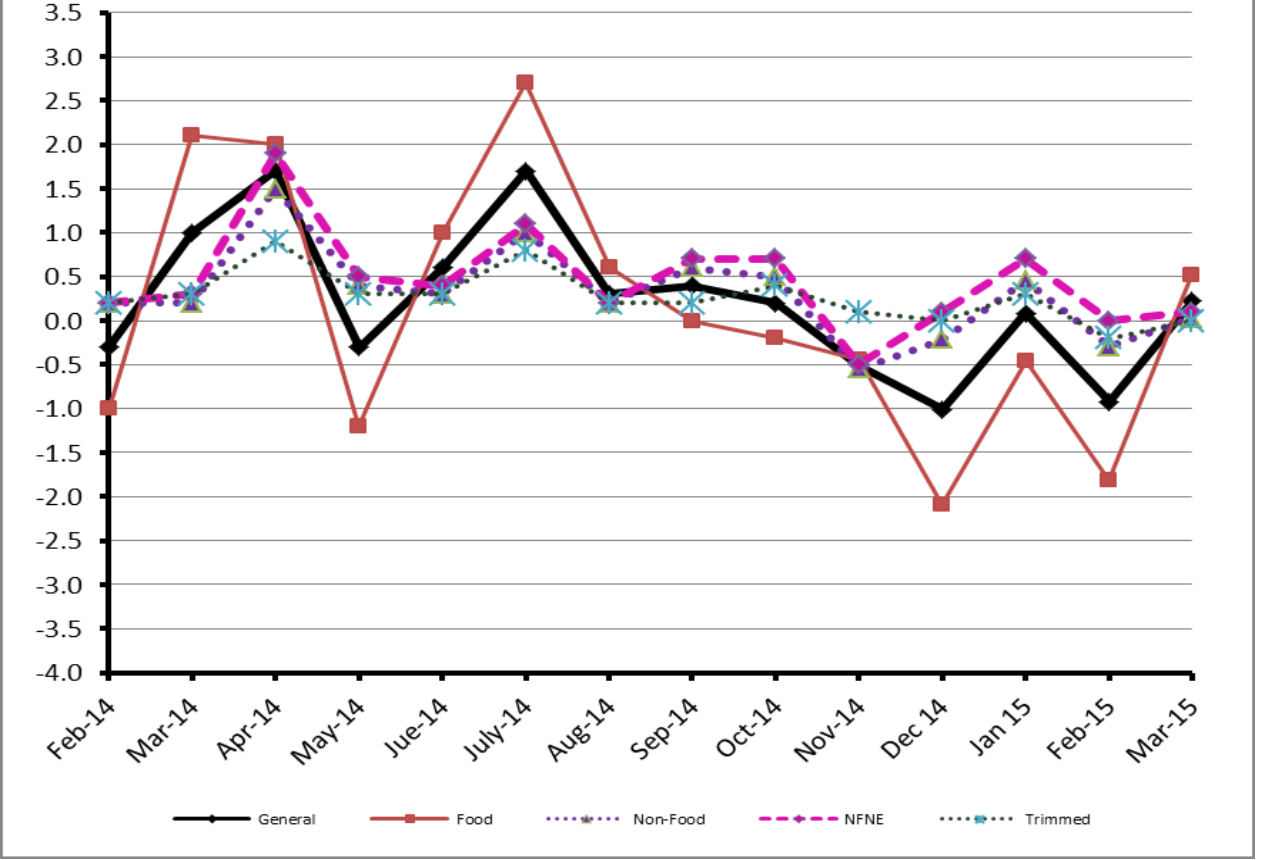


Figure 2: CPI Inflation MoM, Special Indices



II. Consumer Price Index (CPI)

The Consumer Price Index of March, 2015 has increased by 0.23 over February, 2015 and 2.49% over corresponding month of the last year, i.e. March 2014.

Table 2 : Consumer Price Index by Group of Commodities and Services (Base 2007-08)

No	Group	Group Weight (%)	Indices			% Change Mar 2015 Over		Impact (In % points) Mar 2015 Over	
			Mar 2015	Feb 2015	Mar 2014	Feb 2015	Mar 2014	Feb 2015	Mar 2014
	General	100.00	195.57	195.13	190.82	0.23	2.49	0.23	2.49
1.	Food & Non-alcoholic Bev.	34.83	210.96	209.81	211.97	0.55	-0.48	0.21	-0.18
	<i>Non-perishable Food Items</i>	29.84	213.73	214.19	214.15	-0.21	-0.20	-0.07	-0.07
	<i>Perishable Food Items</i>	4.99	194.42	183.61	198.94	5.89	-2.27	0.28	-0.12
2.	Alcoholic Bev.& Tobacco	1.41	266.63	266.63	221.82	0.00	20.20	0.00	0.33
3.	Clothing & Footwear	7.57	215.06	214.49	200.29	0.27	7.37	0.02	0.59
4.	Housing, Water, Electricity, Gas & Fuels	29.41	176.51	176.51	166.99	0.00	5.70	0.00	1.47
5.	Furnishing & Household Equipment Maintenance	4.21	209.89	209.72	198.85	0.08	5.55	0.00	0.24
6.	Health	2.19	177.26	177.16	169.93	0.06	4.31	0.00	0.08
7.	Transport	7.20	175.14	175.39	196.22	-0.14	-10.74	-0.01	-0.80
8.	Communication	3.22	130.27	130.27	129.85	0.00	0.32	0.00	0.01
9.	Recreation & Culture	2.02	189.80	189.67	183.72	0.07	3.31	0.00	0.06
10.	Education	3.94	192.50	192.41	168.53	0.05	14.22	0.00	0.50
11.	Restaurants & Hotels	1.23	247.22	246.22	235.52	0.41	4.97	0.01	0.08
12.	Miscellaneous	2.76	222.57	222.81	214.42	-0.11	3.80	0.00	0.12

Main contributors to month-on-month and year-on-year percentage changes are given below and detail is given in Annexure A.

1. **Month-on-month** Top few commodities which varied from previous month i.e. February 2015 are given below:-

Food Items Increased: Onion (23.92%), Tomatoes (8.19%), Fresh Fruits (5.97%), Fresh Vegetables (4.26%), Chicken (1.92%) and Jam, Tomatoes Ketchup & Pickles (1.25%).

Decreased: Eggs (8.06%), Potatoes (6.35%), Pulse Gram (2.12%), Besan (1.98%), Masoor Pulse (1.43%), Rice (1.29%), Fish (1.13%) and Gram Whole (1.03%).

Non-food Items Increased: Cotton Cloths (0.77%) and Cleaning & Laundry (0.53%).

Decreased: Personal Equipment (0.98%) and Kerosene Oil (0.77%).

2. **Year-on-Year:** Top few commodities which varied from previous year i.e. March 2014 are given below:-

Food Items Increased: Cigarettes (20.39%), Pulse Mash (16.16%), Pulse Moong (11.90%), Tomatoes (11.35%), Fresh Fruits (9.98%), Honey (9.34%), Condiments (9.23%), Beverages (8.92%), Milk Powder (8.68%) and Dry Fruits (8.22%).

Decreased: Potatoes (43.28%), Eggs (20.70%), Chicken (16.27%), Onions (14.65%), Wheat (13.59%) Wheat Flour (8.16%) and Rice (7.29%).

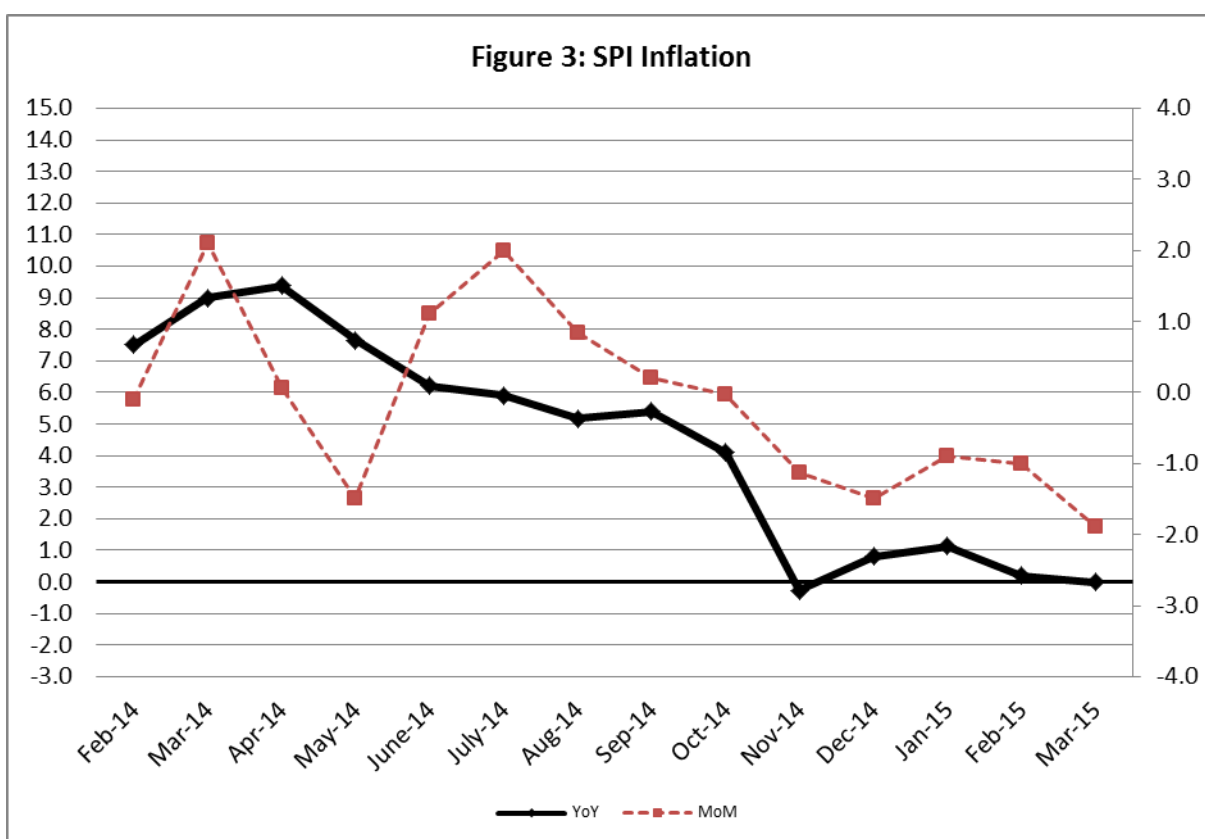
Non-food Items Increased: Motor Vehicle Tax (36.71%), Education (14.22%), Cotton Cloths (11.75%), Tailoring (10.51%) and Woolen Readymade Garments (10.32%).

Decreased: Kerosene Oil (30.26%), Motor Fuel (23.16%) and Transport Services (5.58%).

III. Sensitive Price Indicator

Quintile-wise percentage changes YoY and MoM are given below in Table 3. The series from February 2014 to March 2015 is also graphed below in Figure 3.

Table 3 : Sensitive Price Indicator (Base 2007-08)					
Quintiles	Indices			% Change March 2015 over	
	March 2015	February 2015	March 2014	February 2015	March 2014
1	199.92	199.92	203.77	0.00	-1.89
2	205.81	205.79	209.24	0.01	-1.64
3	208.83	208.78	212.77	0.02	-1.85
4	209.99	209.92	214.61	0.03	-2.15
5	206.70	206.59	213.12	0.05	-3.01
Combined	207.05	206.98	212.08	0.03	-2.37



IV. Wholesale Price Index

The Wholesale Price Index for March 2015 increased by 0.01% over February, 2015. It decreased by 3.67% over the corresponding month of the last year. YoY and MoM movements, from February 2014 to March 2015 are also graphed below in Figure 4.

Table 4 : Wholesale Price Index by Group of Commodities (Base 2007-08)

No.	Group	Group Weight (%)	Indices			% Change Mar 2015 over		Impact (in %age points) Mar 2015 over	
			Mar 2015	Feb 2015	Mar 2014	Feb 2015	Mar 2014	Feb 2015	Mar 2014
	General	100.00	203.89	203.86	211.66	0.01	-3.67	0.01	-3.67
1.	Agriculture, Forestry & Fishery Products	25.77	212.84	212.19	217.63	0.31	-2.20	0.08	-0.58
2.	Ores & Minerals, Electricity, Gas & Water	12.04	246.08	246.75	243.45	-0.27	1.08	-0.04	0.15
3.	Food Products, Beverages & Tobacco, Textiles, Apparel & Leather Products	31.11	205.27	205.53	201.93	-0.13	1.65	-0.04	0.49
	i. Food Products, Bev. & Tobacco	20.07	216.35	216.61	205.40	-0.12	5.33	-0.03	1.04
	ii. Textiles and Apparel	10.33	184.58	184.61	192.57	-0.02	-4.15	0.00	-0.39
	iii. Leather Products	0.71	193.14	196.56	239.85	-1.74	-19.47	-0.01	-0.16
4.	Other Transportable Goods except Metal Products, Machinery & Equipment	22.37	180.97	180.79	217.63	0.10	-16.85	0.02	-3.87
5.	Metal Products, Machinery & Equipment	8.72	173.00	173.23	169.52	-0.13	2.05	-0.01	0.14

Main contributors to month-on-month and year-on-year percentage changes are given below and detail is given in Annexure B.

1. **Month-on-month** Top few commodities which varied from previous month i.e. February, 2015 are given below:-

Increased: Furnace Oil (5.55%), Insecticides (5.43%), Fresh Fruits (4.41%), Vegetables (4.38%), Poultry (2.90%), Fiber Crops (2.66%), Dry Fruits (1.45%) and Other Fabrics (1.31%).

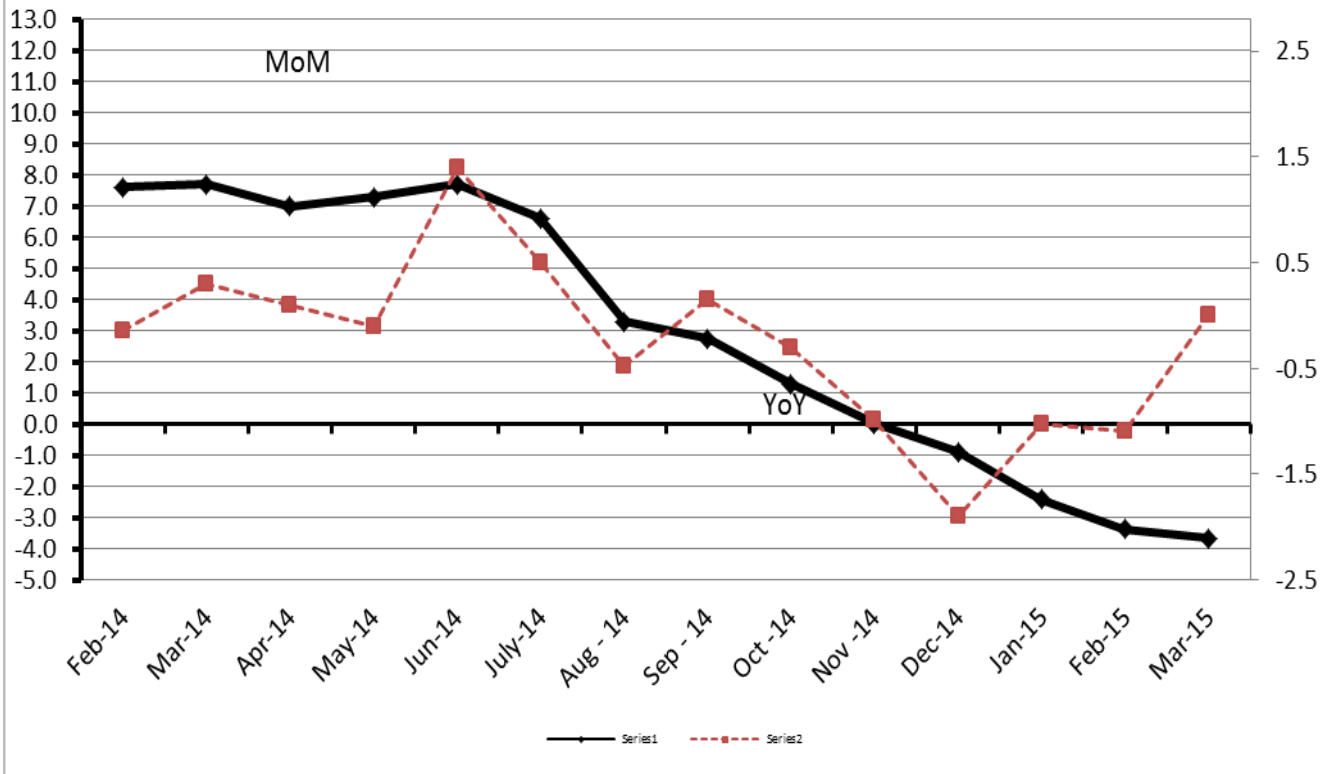
Decreased: Hard Board (10.59%), Eggs (7.54%), Potatoes (6.81%), Oil Cakes (5.67%), Leather without Hair (3.40%) and Cultivators (3.15%).

2. **Year-on-year** Top few commodities which varied from previous year i.e. March, 2014 are given below:-

Increased: Dyeing Material (36.26%), Pesticides (22.23%), Readymade Garments (21.98%), Tobacco Products (19.85%), Other Fabrics (18.28%), Processed Liquid Milk (17.69%) Fish (17.20%) and Woolen Carpets (16.23%).

Decreased: Potatoes (47.75%), Furnace Oil (43.26%), Kerosene Oil (37.87%), Diesel (37.37%), Motor Spirit (36.14%), Fiber Crops (23.94%) and Eggs (22.98%).

Figure 4: WPI Inflation



Annexure A: Consumer Price Index Numbers by Commodity Groups & Commodities (2007-08=100)

Item and Specification	Weight	Index Numbers			% Change in Mar 2015 over	
		Mar 15	Feb 15	Mar 14	Feb 2015	Mar 2014
General	100.0000	195.57	195.13	190.82	+ 0.23	+ 2.49
Food and non-alcoholic Bevera	34.8343	210.96	209.81	211.97	+ 0.55	- 0.48
01 Wheat	0.3477	206.08	207.57	238.50	- 0.72	- 13.59
02 Wheat Flour	4.1648	216.38	217.05	235.61	- 0.31	- 8.16
03 Wheat Product	0.0959	214.46	215.48	224.47	- 0.47	- 4.46
04 Besan	0.1500	174.98	178.51	172.71	- 1.98	+ 1.31
05 Rice	1.5821	180.14	182.50	194.31	- 1.29	- 7.29
06 Cereals	0.1563	239.89	239.75	233.06	+ 0.06	+ 2.93
07 Bakery & Confectionary	1.1550	207.63	206.90	201.00	+ 0.35	+ 3.30
08 Nimco	0.4574	238.99	238.91	224.39	+ 0.03	+ 6.51
09 Meat	2.4303	245.19	245.12	235.42	+ 0.03	+ 4.15
10 Chicken	1.3596	170.28	167.07	203.37	+ 1.92	- 16.27
11 Fish	0.2970	218.38	220.88	218.54	- 1.13	- 0.07
12 Milk Fresh	6.6800	249.65	249.59	234.51	+ 0.02	+ 6.46
13 Milk Products	0.6338	242.74	242.74	229.24	+ 0.00	+ 5.89
14 Milk Powder	0.1129	226.26	225.79	208.19	+ 0.21	+ 8.68
15 Eggs	0.4555	188.93	205.49	238.24	- 8.06	- 20.70
16 Mustard Oil	0.0952	156.03	157.49	159.32	- 0.93	- 2.07
17 Cooking Oil	1.7538	152.09	153.35	162.30	- 0.82	- 6.29
18 Vegetable Ghee	2.0714	149.30	149.70	160.38	- 0.27	- 6.91
19 Dry Fruits	0.2543	251.60	252.44	232.50	- 0.33	+ 8.22
20 Fresh Fruits	1.8649	211.26	199.36	192.09	+ 5.97	+ 9.98
21 Pulse Masoor	0.2712	188.43	191.16	178.99	- 1.43	+ 5.27
22 Pulse Moong	0.2336	311.95	313.75	278.78	- 0.57	+ 11.90
23 Pulse Mash (Washed)	0.2098	226.61	228.22	195.09	- 0.71	+ 16.16
24 Pulse Gram	0.2361	175.56	179.36	171.73	- 2.12	+ 2.23
25 Gram Whole	0.1616	179.08	180.95	178.82	- 1.03	+ 0.15
26 Beans	0.0269	235.83	236.81	247.84	- 0.41	- 4.85
27 Potatoes	0.4914	153.49	163.90	270.62	- 6.35	- 43.28
28 Onion	0.5555	173.43	139.95	203.21	+ 23.92	- 14.65
29 Tomatoes	0.4634	185.55	171.50	166.63	+ 8.19	+ 11.35
30 Fresh Vegetables	1.6157	197.16	189.11	192.85	+ 4.26	+ 2.23
31 Sugar	1.0445	194.18	194.97	192.40	- 0.41	+ 0.93
32 Gur	0.0220	252.22	253.51	242.61	- 0.51	+ 3.96
33 Honey	0.0446	303.39	303.39	277.48	+ 0.00	+ 9.34
34 SweetMeat	0.2483	234.31	233.47	224.66	+ 0.36	+ 4.30
35 Beverages	1.1990	206.84	206.46	189.90	+ 0.18	+ 8.92
36 Jam, Tomato Ketchup & Pickles	0.2454	207.58	205.02	192.31	+ 1.25	+ 7.94
37 Condiments	0.2656	256.81	255.89	235.12	+ 0.36	+ 9.23
38 Spices	0.5441	235.06	234.85	219.45	+ 0.09	+ 7.11
39 Tea	0.8377	219.24	217.22	227.06	+ 0.93	- 3.44
Alcoholic Beverages, Tobacco	1.4135	266.63	266.63	221.82	+ 0.00	+ 20.20
40 Cigarettes	1.3906	267.63	267.63	222.30	+ 0.00	+ 20.39
41 Betel Leaves & Nuts	0.0229	206.03	206.10	192.37	- 0.03	+ 7.10
Clothing and footwear	7.5708	215.06	214.49	200.29	+ 0.27	+ 7.37
42 Cotton Cloth	1.7286	209.30	207.71	187.29	+ 0.77	+ 11.75
43 Woolen Cloth	0.8759	233.69	233.21	223.23	+ 0.21	+ 4.69
44 Readymade Garments	0.9739	213.98	213.47	199.09	+ 0.24	+ 7.48
45 Woolen Readymade Garments	0.3964	240.87	240.93	218.34	- 0.02	+ 10.32
46 Hosiery	0.5094	226.43	225.91	210.64	+ 0.23	+ 7.50
47 Dopatta	0.4412	231.21	231.18	218.65	+ 0.01	+ 5.74
48 Cleaning and Laundry	0.2110	237.64	236.38	222.23	+ 0.53	+ 6.93
49 Tailoring	0.8840	266.24	266.17	240.93	+ 0.03	+ 10.51
50 Footwear	1.5504	164.45	164.41	163.18	+ 0.02	+ 0.78
Housing, water, Elec., Gas an	29.4149	176.51	176.51	166.99	+ 0.00	+ 5.70
51 House Rent	21.8149	165.29	165.29	153.82	+ 0.00	+ 7.46
52 Construction Input Items	0.5623	237.12	236.82	227.61	+ 0.13	+ 4.18
53 Construction Wage Rates	0.3331	208.81	208.81	193.88	+ 0.00	+ 7.70
54 Water Supply	0.4971	149.92	149.92	149.92	+ 0.00	+ 0.00
55 Electricity	4.3985	231.52	231.52	227.44	+ 0.00	+ 1.79

Annexure A: Consumer Price Index Numbers by Commodity Groups & Commodities (2007-08=100)

Item and Specification	Weight	Index Numbers			% Change in Mar 2015 over	
		Mar 15	Feb 15	Mar 14	Feb 2015	Mar 2014
56 Gas	1.5756	143.81	143.81	143.81	+ 0.00	+ 0.00
57 Kerosene Oil	0.0057	205.81	207.40	295.11	- 0.77	- 30.26
58 Firewood Whole	0.2277	275.22	276.56	266.51	- 0.48	+ 3.27
Furnishing and household equi	4.2082	209.89	209.72	198.85	+ 0.08	+ 5.55
59 Furniture	0.3315	202.15	202.10	190.75	+ 0.02	+ 5.98
60 Household Textiles	0.6489	207.67	207.67	197.21	+ 0.00	+ 5.30
61 Household Equipment	0.5936	172.55	172.53	167.61	+ 0.01	+ 2.95
62 Utensils	0.3212	212.69	212.31	200.51	+ 0.18	+ 6.07
63 Plastic Products	0.2547	201.40	201.01	192.33	+ 0.19	+ 4.72
64 Washing Soaps & Detergents	0.7893	224.64	224.05	216.51	+ 0.26	+ 3.76
65 Sewing Needle & Dr Cell	0.1496	184.21	184.21	176.49	+ 0.00	+ 4.37
66 Household Servant	1.0432	227.11	227.11	210.10	+ 0.00	+ 8.10
67 Marriage Hall Charges	0.0762	231.83	231.83	213.24	+ 0.00	+ 8.72
Health	2.1868	177.26	177.16	169.93	+ 0.06	+ 4.31
68 Drugs & Medicines	1.2667	148.33	148.15	144.13	+ 0.12	+ 2.91
69 Medical Equipments	0.0080	222.66	222.66	210.51	+ 0.00	+ 5.77
70 Doctor (MBBS) Clinic Fee	0.5904	238.49	238.49	226.12	+ 0.00	+ 5.47
71 Medical Tests	0.3217	177.69	177.69	167.41	+ 0.00	+ 6.14
Transport	7.2023	175.14	175.39	196.22	- 0.14	- 10.74
72 Motor Vehicles	0.6630	163.87	163.87	162.83	+ 0.00	+ 0.64
73 Motor Vehicle Accessories	0.2439	230.17	230.17	223.52	+ 0.00	+ 2.98
74 Motor Fuel	3.0269	146.52	146.87	190.67	- 0.24	- 23.16
75 Mechanical Service	0.4552	212.42	212.34	201.85	+ 0.04	+ 5.24
76 Motor Vehicle Tax	0.1099	210.18	210.18	153.74	+ 0.00	+ 36.71
77 Transport Services	2.7034	197.28	197.55	208.93	- 0.14	- 5.58
Communication	3.2198	130.27	130.27	129.85	+ 0.00	+ 0.32
78 Postal Services	0.0662	227.44	227.44	215.89	+ 0.00	+ 5.35
79 Communication & Apparatus	3.1536	128.23	128.23	128.04	+ 0.00	+ 0.15
Recreation and culture	2.0227	189.80	189.67	183.72	+ 0.07	+ 3.31
80 Recreation & Culture	0.8634	128.25	128.09	126.95	+ 0.12	+ 1.02
81 Text Books	0.5706	280.89	280.89	267.10	+ 0.00	+ 5.16
82 Newspapers	0.1934	175.42	175.42	175.42	+ 0.00	+ 0.00
83 Stationery	0.3953	199.80	199.45	191.42	+ 0.18	+ 4.38
Education	3.9431	192.50	192.41	168.53	+ 0.05	+ 14.22
84 Education	3.9431	192.50	192.41	168.53	+ 0.05	+ 14.22
Restaurants and hotels	1.2286	247.22	246.22	235.52	+ 0.41	+ 4.97
85 Readymade Food	1.2286	247.22	246.22	235.52	+ 0.41	+ 4.97
Misc. goods and services	2.7550	222.57	222.81	214.42	- 0.11	+ 3.80
86 Personal Care	1.4935	206.71	205.72	196.15	+ 0.48	+ 5.38
87 Cosmetics	0.3853	190.30	190.14	180.22	+ 0.08	+ 5.59
88 Blades	0.0322	185.88	185.88	182.56	+ 0.00	+ 1.82
89 Personal Equipments	0.8440	266.75	269.38	263.58	- 0.98	+ 1.20

Annexure B: Wholesale Price Indices by Major Groups & Commodities

(2007-08=100)

Item and Specification	Weight	Index Numbers			% Change in Mar 2015 over		
		Mar 15	Feb 15	Mar 14	Feb 2015	Mar 2014	
General	100.0000	203.89	203.86	211.66	+	0.01	- 3.67
Agriculture Forestry & Fisher	25.7674	212.84	212.19	217.63	+	0.31	- 2.20
001 Wheat	0.6297	210.62	210.66	250.86	-	0.02	- 16.04
002 Maize	0.6764	187.54	189.01	180.57	-	0.78	+ 3.86
003 Rice	2.4413	162.53	166.83	178.17	-	2.58	- 8.78
004 Sorghum / Jowar	0.0214	289.73	289.98	289.35	-	0.09	+ 0.13
005 Millet / Bajra	0.0374	159.44	162.93	174.91	-	2.14	- 8.84
006 Vegetables	1.2441	188.58	180.66	195.18	+	4.38	- 3.38
007 Fresh Fruits	1.5144	226.58	217.00	213.00	+	4.41	+ 6.38
008 Dry Fruits	0.2478	232.48	229.16	207.33	+	1.45	+ 12.13
009 Cotton Seeds	1.1511	203.39	208.28	197.27	-	2.35	+ 3.10
010 Other Oil Seeds	0.0722	172.36	177.61	183.71	-	2.96	- 6.18
011 Edible Roots / Potatoes	0.2540	150.80	161.82	288.60	-	6.81	- 47.75
012 Stimulant & Spice Crops	0.1634	281.74	281.50	355.25	+	0.09	- 20.69
013 Pulses	0.4901	209.71	212.31	191.54	-	1.22	+ 9.49
014 Sugar Crops	1.0725	286.29	287.55	267.92	-	0.44	+ 6.86
015 Fiber Crops	5.3169	165.63	161.34	217.76	+	2.66	- 23.94
016 Unmanufactured Tobacco	0.0742	217.50	217.23	190.00	+	0.12	+ 14.47
017 Poultry	0.5633	167.92	163.19	210.42	+	2.90	- 20.20
018 Raw Milk from Bovine Animals	7.0279	251.69	251.69	226.49	+	0.00	+ 11.13
019 Eggs	0.5034	189.76	205.24	246.39	-	7.54	- 22.98
020 Raw Animal Materials / Wool	0.0351	177.10	178.52	157.45	-	0.80	+ 12.48
021 Hides & Fur Skins, Raw	0.4834	159.92	159.76	147.11	+	0.10	+ 8.71
022 Fuel Wood in Logs	0.0179	259.53	259.53	242.82	+	0.00	+ 6.88
023 Fish Live Fresh or Chilled	1.7295	286.70	288.48	244.62	-	0.62	+ 17.20
Ores/Minerals, Elec., Gas & W	12.0389	246.08	246.75	243.45	-	0.27	+ 1.08
024 Coal not Agglomerated	0.7508	223.53	223.53	223.53	+	0.00	+ 0.00
025 Natural Gas Liquefied	5.7385	201.62	203.03	204.10	-	0.69	- 1.22
026 Salt & Pure Sodium Chloride	0.0584	247.16	247.16	231.42	+	0.00	+ 6.80
027 Electrical Energy	5.4912	295.61	295.61	287.44	+	0.00	+ 2.84
Food, Beverages, Tobacco, Textil	31.1122	205.27	205.53	201.93	-	0.13	+ 1.65
Food Products, Beverages &	20.0718	216.35	216.61	205.40	-	0.12	+ 5.33
028 Meat of Animals	3.4559	260.18	259.95	240.41	+	0.09	+ 8.22
029 Vegetables & Fruit Juice	0.0058	198.31	198.31	191.62	+	0.00	+ 3.49
030 Dried Fruits & Nuts	0.1733	229.85	228.83	218.74	+	0.45	+ 5.08
031 Fruit Juices	0.3880	173.34	173.27	166.09	+	0.04	+ 4.37
032 Vegetable Oils Refined	1.9242	158.10	158.19	164.69	-	0.06	- 4.00
033 Vegetable Ghee	1.5632	128.57	129.25	144.11	-	0.53	- 10.78
034 Oil Cakes	0.9611	186.18	197.37	198.60	-	5.67	- 6.25
035 Processed Liquid Milk	4.4437	253.81	252.28	215.66	+	0.61	+ 17.69
036 Milk & Cream in Solid Form	0.0316	221.70	220.24	207.17	+	0.66	+ 7.01
037 Ice Cream	0.0047	219.91	219.91	209.79	+	0.00	+ 4.82
038 Dairy Products N.E.C	0.0117	239.38	239.22	223.27	+	0.07	+ 7.22
039 Wheat Flour	2.3034	198.06	198.41	217.42	-	0.18	- 8.90
040 Other Cereal Flour	0.0604	144.94	148.22	138.58	-	2.21	+ 4.59
041 Sugar Refined	1.7975	204.82	205.44	201.11	-	0.30	+ 1.84
042 Chocolate	0.0139	99.19	99.19	99.19	+	0.00	+ 0.00
043 Sugar Confectionary	0.0738	102.28	102.28	102.28	+	0.00	+ 0.00
044 Coffee & Tea	0.7303	195.98	194.48	208.86	+	0.77	- 6.17
045 Spices	0.1449	189.66	189.66	191.41	+	0.00	- 0.91
046 Other Food Products	0.0336	294.23	298.34	308.40	-	1.38	- 4.59
047 Mineral Water	0.0207	187.86	187.86	183.04	+	0.00	+ 2.63
048 Beverages	0.6303	171.62	171.52	155.31	+	0.06	+ 10.50
049 Tobacco Products	1.2998	290.52	290.52	242.41	+	0.00	+ 19.85
Textiles & Apparels	10.3289	184.58	184.61	192.57	-	0.02	- 4.15
050 Cotton Yarn	5.2491	170.43	171.00	207.32	-	0.33	- 17.79
051 Nylon Yarn	0.1719	150.22	154.23	177.75	-	2.60	- 15.49
052 Blended Yarn	0.1689	182.56	185.12	199.15	-	1.38	- 8.33
053 Woven Fabrics	0.0128	258.39	258.39	226.82	+	0.00	+ 13.92

Annexure B: Wholesale Price Indices by Major Groups & Commodities

(2007-08=100)

Item and Specification	Weight	Index Numbers			% Change in Mar 2015 over		
		Mar 15	Feb 15	Mar 14	Feb 2015	Mar 2014	
054 Cotton Fabrics	0.6343	201.34	200.51	189.65	+	0.41	+ 6.16
055 Other Fabrics	1.1016	212.61	209.87	179.75	+	1.31	+ 18.28
056 Silk & Rayon Fabrics	0.7350	179.89	179.89	161.09	+	0.00	+ 11.67
057 Towels	0.1235	265.62	265.62	234.25	+	0.00	+ 13.39
058 Blankets	0.0029	235.86	235.86	219.66	+	0.00	+ 7.38
059 Bed Sheets	0.0913	255.40	253.21	236.05	+	0.86	+ 8.20
060 Quilts	0.0019	196.84	196.84	172.42	+	0.00	+ 14.16
061 Woolen Carpets	0.0383	132.14	132.14	113.69	+	0.00	+ 16.23
062 Synthetic Carpets	0.0566	126.27	126.27	116.10	+	0.00	+ 8.76
063 Hosiery Products	0.8832	216.06	216.06	195.50	+	0.00	+ 10.52
064 Readymade Garments	1.0576	186.77	186.77	153.12	+	0.00	+ 21.98
Leather Products	0.7115	193.14	196.56	239.85	-	1.74	- 19.47
065 Leather Without Hair	0.2973	207.72	215.02	209.40	-	3.40	- 0.80
066 Other Leather N.E.C	0.2567	212.39	213.42	339.91	-	0.48	- 37.52
067 Footwear	0.1575	134.22	134.22	134.22	+	0.00	+ 0.00
Other Transportable Goods	22.3659	180.97	180.79	217.63	+	0.10	- 16.85
068 Timber	0.0165	202.05	202.05	174.55	+	0.00	+ 15.75
069 Printing Paper	0.4279	162.79	167.70	176.01	-	2.93	- 7.51
070 Hard Board	0.1579	197.92	221.35	229.17	-	10.59	- 13.64
071 Coke	0.2797	163.45	163.45	163.45	+	0.00	+ 0.00
072 Motor Spirit	1.5336	118.71	118.71	185.89	+	0.00	- 36.14
073 Diesel Oil	5.2664	175.03	175.03	279.46	+	0.00	- 37.37
074 Kerosene Oil	0.2151	178.93	178.93	288.01	+	0.00	- 37.87
075 Furnace Oil	3.2664	100.86	95.56	177.75	+	5.55	- 43.26
076 Mobil Oil	0.7114	200.74	201.53	194.41	-	0.39	+ 3.26
077 Chemicals	1.7720	196.79	197.65	175.87	-	0.44	+ 11.90
078 Dyeing Material	0.1539	146.55	146.55	107.55	+	0.00	+ 36.26
079 Fertilizers	2.8657	273.84	275.65	264.50	-	0.66	+ 3.53
080 Pesticides	0.2763	290.39	290.39	237.58	+	0.00	+ 22.23
081 Insecticides	0.1276	142.24	134.91	136.47	+	5.43	+ 4.23
082 Paints & Varnishes	0.1916	291.17	288.63	268.31	+	0.88	+ 8.52
083 Medicines	1.1428	145.19	145.19	140.31	+	0.00	+ 3.48
084 Soaps & Detergents	0.8168	178.14	178.31	181.82	-	0.10	- 2.02
085 Auto Tyres	0.2703	192.43	192.43	185.73	+	0.00	+ 3.61
086 Plastic Products	0.4550	222.47	222.47	202.33	+	0.00	+ 9.95
087 Glass sheets	0.2089	228.76	228.76	207.75	+	0.00	+ 10.11
088 Other Glass Articles	0.1635	243.63	242.89	214.09	+	0.30	+ 13.80
089 Ceramics & Sanitary Fixture	0.0244	218.62	216.99	194.56	+	0.75	+ 12.37
090 Bricks, Blocks & Tiles	0.1566	208.60	206.92	195.96	+	0.81	+ 6.45
091 Cement	1.8145	206.83	207.84	207.69	-	0.49	- 0.41
092 Bed Foam	0.0006	156.67	156.67	149.67	+	0.00	+ 4.68
093 Matches	0.0505	143.20	143.20	143.20	+	0.00	+ 0.00
Metal Product, Machinery & Eq	8.7156	173.00	173.23	169.52	-	0.13	+ 2.05
094 Pig Iron	0.0593	128.97	128.97	128.97	+	0.00	+ 0.00
095 Steel Bar & Sheets	1.4022	140.43	141.59	138.60	-	0.82	+ 1.32
096 Pipe Fittings	0.0780	191.94	191.94	168.33	+	0.00	+ 14.03
097 Steel Products	0.3879	173.80	173.80	170.24	+	0.00	+ 2.09
098 Engines & Motors	0.0046	109.07	109.07	109.07	+	0.00	+ 0.00
099 Vacuum Pumps	0.0155	115.39	115.39	115.39	+	0.00	+ 0.00
100 Air Conditioners	0.0049	196.18	196.18	181.12	+	0.00	+ 8.31
101 Cultivators	0.0551	219.76	226.90	226.90	-	3.15	- 3.15
102 Chuff Cutter	0.1293	149.20	149.20	149.20	+	0.00	+ 0.00
103 Tractors	0.0028	214.54	214.54	193.29	+	0.00	+ 10.99
104 Lathe Machines	0.0525	208.81	208.81	208.81	+	0.00	+ 0.00
105 Concrete Mixture	0.0107	138.83	138.83	138.83	+	0.00	+ 0.00
106 Fridge, WashM, SewM, Fans, Iron	1.1645	198.16	198.16	192.37	+	0.00	+ 3.01
107 Electric Wires	0.0912	190.87	190.87	178.73	+	0.00	+ 6.79
108 Lighting Equipments	1.4431	168.19	168.19	163.27	+	0.00	+ 3.01
109 Radio & Television	0.1843	126.49	126.49	126.49	+	0.00	+ 0.00
110 Motor Vehicles	0.0244	183.03	183.03	184.47	+	0.00	- 0.78
111 Motorcycles	0.2570	128.20	128.20	126.15	+	0.00	+ 1.63
112 Bicycles	3.3483	185.63	185.63	182.84	+	0.00	+ 1.53