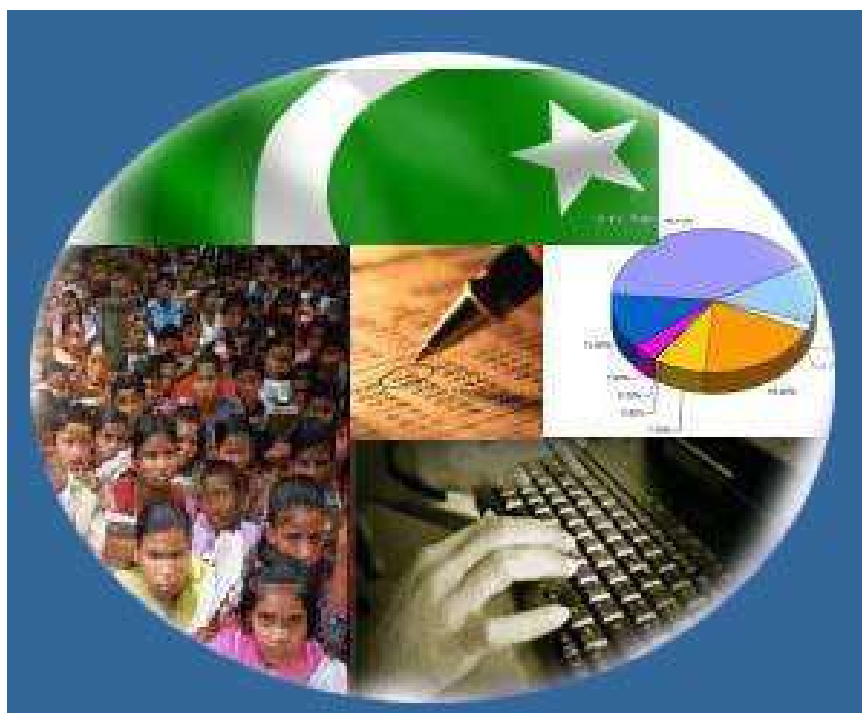


Monthly Review on Price Indices



January, 2015
(Base 2007-08)

Government of Pakistan
Statistics Division
Pakistan Bureau of Statistics
Islamabad

Inflation in Brief

1. CPI inflation, General, increased by 3.9% on year-on-year basis in January 2015 as compared to 4.3% in the previous month and by 7.9% in January 2014. On month-on-month basis, it increased by 0.1% in January 2015 as compared to decrease of 1.0% in the previous month and increase of 0.5% in January 2014.
2. Core inflation measured by non-food non-energy CPI (Core NFNE) increased by 6.4% on (YoY) basis in January 2015 as compared to 6.7% in the previous month and by 8.0% in January 2014. On (MoM) basis, it increased by 0.7% in January 2015 as compared to increase of 0.1% in the previous month and 1.0% in January 2014.
3. Core inflation, measured by 20% weighted trimmed mean CPI (Core Trimmed) increased by 4.8% on (YoY) basis in January 2015 as compared to 5.2% in the previous month and by 8.2% in January 2014. On (MoM) basis, it increased by 0.3 in January 2015 as compared to remained unchanged in the previous month and an increase of 0.6% in January 2014.
4. SPI inflation on YoY basis increased by 1.1% in January 2015 as compared to 0.8% a month earlier and of 7.7% in January 2014. On MoM basis, it is decreased by 0.9% in January 2015 as compared to decrease of 1.5% a month earlier and decrease of 1.2% in January 2014.
5. WPI inflation on YoY basis decreased by 2.4% in January 2015 as compared to decrease of 0.9% a month earlier and an increase of 8.1% in January 2014. WPI inflation on MoM basis decreased by 1.0% in January 2015 as compared to decrease of 1.9% a month earlier and an increase of 0.5% in January 2014.
6. Figures 1 and 2 show graphically the data of Table 1. Table 1.1 shows "Period Average" and "YoY" percent changes in indices of three years.

Table 1: Inflation (%) (Base 2007-08)

Period	CPI						Core Inflation				SPI**		WPI	
	General		Food		Non-food		NFNE*		Trimmed		YoY	MoM	YoY	MoM
	YoY	MoM	YoY	MoM	YoY	MoM	YoY	MoM	YoY	MoM				
Dec 13	9.2	-1.3	9.3	-3.3	9.1	0.2	8.2	0.2	8.7	0.4	11.1	-2.5	8.9	-1.0
Jan 14	7.9	0.5	7.2	0.0 ¹	8.4	0.9	8.0	1.0	8.2	0.6	7.7	-1.2	8.1	0.5
Feb 14	7.9	-0.3	7.6	-1.0	8.2	0.2	7.8	0.2	8.1	0.2	7.5	-0.1	7.6	-0.1
Mar 14	8.5	1.0	9.3	2.1	8.0	0.2	7.6	0.3	8.1	0.3	9.0	2.1	7.7	0.3
Apr 14	9.2	1.7	9.9	2.0	8.7	1.5	8.5	1.9	9.0	0.9	9.4	0.1	7.0	0.1
May 14	8.3	-0.3	7.4	-1.2	9.0	0.4	8.7	0.5	8.3	0.3	7.7	-1.5	7.3	-0.1
Jun14	8.2	0.6	7.4	1.0	8.9	0.3	8.7	0.4	7.9	0.3	6.2	1.1	7.7	1.4
Jul 14	7.9	1.7	7.0	2.7	8.5	1.0	8.3	1.1	7.6	0.8	5.9	2.0	6.6	0.5
Aug14	7.0	0.3	5.6	0.6	8.1	0.2	7.9	0.2	7.1	0.2	5.2	0.8	3.3	-0.5
Sep14	7.7	0.4	7.2	0.0	8.0	0.6	8.1	0.7	7.1	0.2	5.4	0.2	2.7	0.2
Oct 14	5.8	0.2	5.2	-0.2	6.3	0.5	7.8	0.7	6.0	0.4	4.1	0.0 ²	1.3	-0.3
Nov 14	4.0	-0.5	2.1	-0.4	5.4	-0.6	6.9	-0.5	5.3	0.1	-0.3	-1.1	0.0 ³	-1.0
Dec 14	4.3	-1.0	3.4	-2.1	4.9	-0.2	6.7	0.1	5.2	0.0	0.8	-1.5	-0.9	-1.9
Jan 15	3.9	0.1	3.0	-0.5	4.5	0.5	6.4	0.7	4.8	0.3	1.1	-0.9	-2.4	-1.0

*NFNE is non-food non-energy, ** SPI for quintile 1 ¹ Actual figure is -0.04, displayed in rounded figure
²Actual figure is -0.03, ³Actual figure is 0.02 displayed in rounded figure

Table 1.1 : Period Average and YoY % Changes of Indices (Base 2007-08)

Index	Averages July-January % Changes			January over January % Changes		
	2014-15	2013-14	2012-13	2014-15	2013-14	2012-13
CPI	5.77	8.75	8.28	3.88	7.91	8.07
SPI	3.14	10.29	7.71	1.13	7.70	9.21
WPI	1.48	8.67	8.03	-2.42	8.11	8.56

Figure 1: CPI Inflation YoY, Special Indices

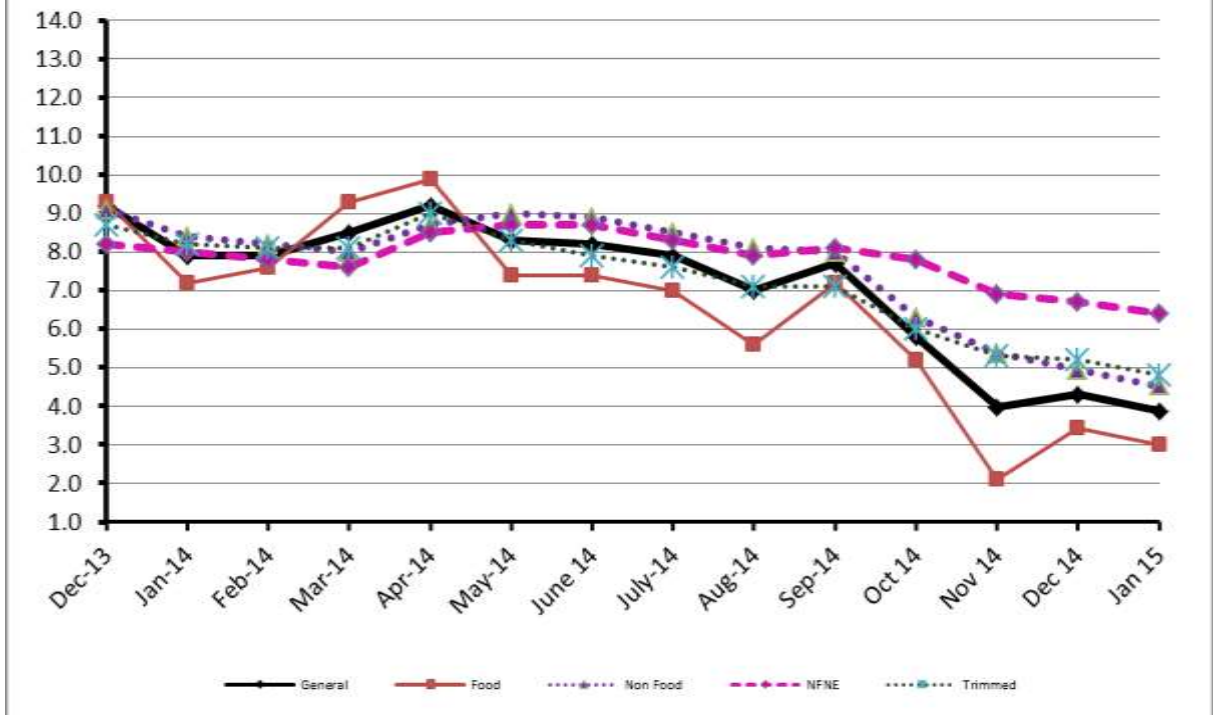
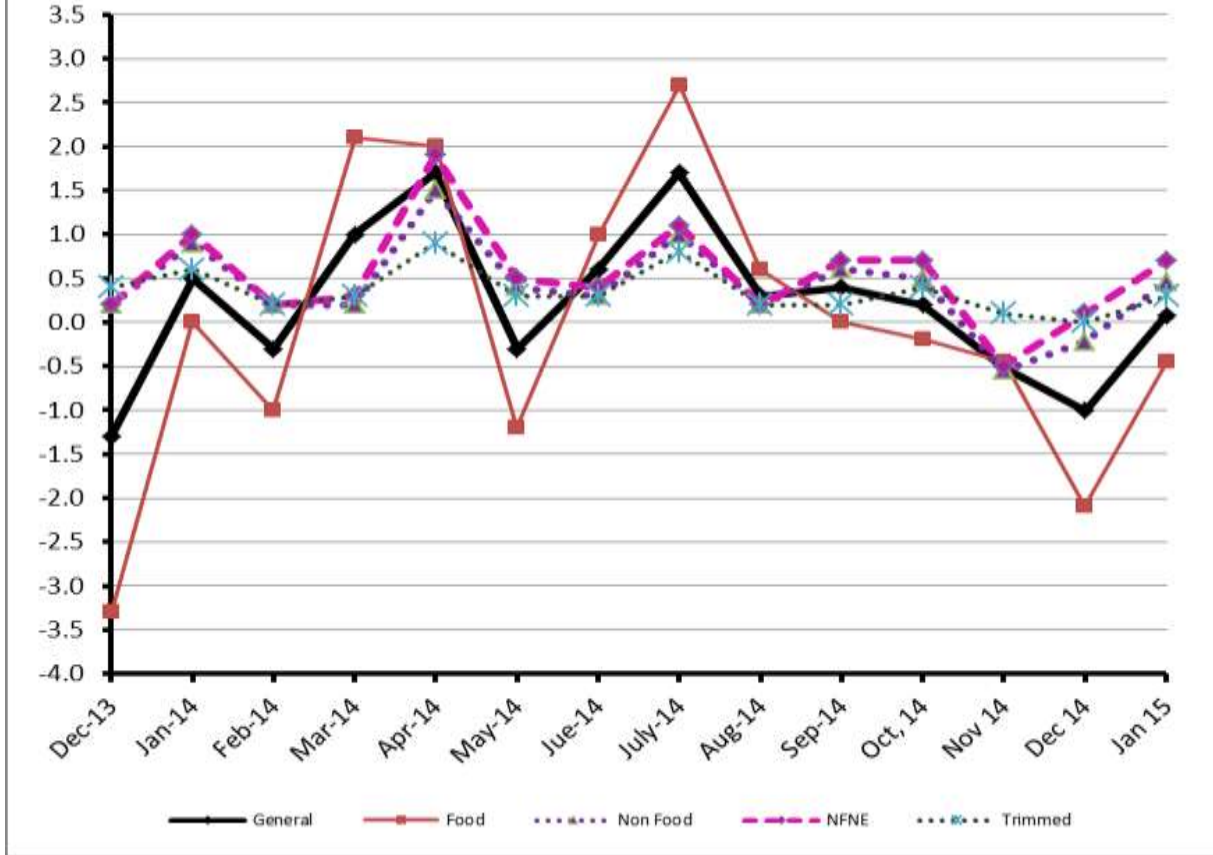


Figure 2: CPI Inflation MoM, Special Indices



II. Consumer Price Index (CPI)

The Consumer Price Index of January, 2015 has increased by 0.08% over December, 2014 and increased by 3.88% over corresponding month of the last year, i.e. January 2014.

Table 2 : Consumer Price Index by Group of Commodities and Services (Base 2007-08)

No	Group	Group Weight (%)	Indices			% Change Jan 2015 Over		Impact (In % points) Jan 2015 Over	
			Jan 2015	Dec 2014	Jan 2014	Dec 2014	Jan 2014	Dec 2014	Jan 2014
	General	100.00	196.95	196.79	189.60	0.08	3.88	0.08	3.88
1.	Food & Non-alcoholic Bev.	34.83	214.11	215.18	209.64	-0.50	2.13	-0.19	0.82
	<i>Non-perishable Food Items</i>	29.84	216.92	217.02	212.55	-0.05	2.06	-0.02	0.69
	<i>Perishable Food Items</i>	4.99	197.34	204.22	192.27	-3.37	2.64	-0.17	0.13
2.	Alcoholic Bev. & Tobacco	1.41	266.62	266.63	221.80	0.00	20.21	0.00	0.33
3.	Clothing & Footwear	7.57	214.32	213.88	198.28	0.21	8.09	0.02	0.64
4.	Housing, Water, Electricity, Gas & Fuels	29.41	176.51	174.04	166.93	1.42	5.74	0.37	1.49
5.	Furnishing & Household Equipment Maintenance	4.21	209.37	208.80	196.74	0.27	6.42	0.01	0.28
6.	Health	2.19	176.97	176.31	166.84	0.37	6.07	0.01	0.12
7.	Transport	7.20	181.22	185.17	197.19	-2.13	-8.10	-0.14	-0.61
8.	Communication	3.22	130.13	130.13	129.79	0.00	0.26	0.00	0.01
9.	Recreation & Culture	2.02	189.63	189.60	183.34	0.02	3.43	0.00	0.07
10.	Education	3.94	192.41	192.41	168.48	0.00	14.20	0.00	0.50
11.	Restaurants & Hotels	1.23	244.90	244.59	231.12	0.13	5.97	0.00	0.09
12.	Miscellaneous	2.76	221.30	220.73	211.24	0.26	4.76	0.01	0.15

Main contributors to month-on-month and year-on-year percentage changes are given below and detail is given in Annexure A.

1. **Month-on-month** Top few commodities which varied from previous month i.e. December 2014 are given below:-

Food Items Increased: Tomatoes (7.30%), Chicken (5.00%), Pulse Gram (3.96%), Eggs (3.92%), Besan (2.47%) and Pulse Moong (1.81%).

Decreased: Potatoes (25.37%), Cooking Oil (2.27%), Beans (2.17%), Rice (1.97%) and Sugar (1.53%).

Non-food Items Increased: Firewood Whole (2.99%), House Rent (1.99%) and Medical Tests (1.80%).

Decreased: Kerosene Oil (7.03%), Motor Fuel (4.01%) and Transport Services (1.56%).

2. **Year-on-Year:** Top few commodities which varied from previous year i.e. January 2014 are given below:-

Food Items Increased: Pulse Moong (21.82%), Cigarettes (20.39%), Pulse Mash (18.21%), Fresh Fruits (13.02%), Pulse Masoor (11.54%), Condiments (11.53%), Pulse Gram (11.20%), Milk Powder (10.59%), Eggs (10.41%) and Honey (10.16%).

Decreased: Onions (34.17%) and Wheat (11.10%).

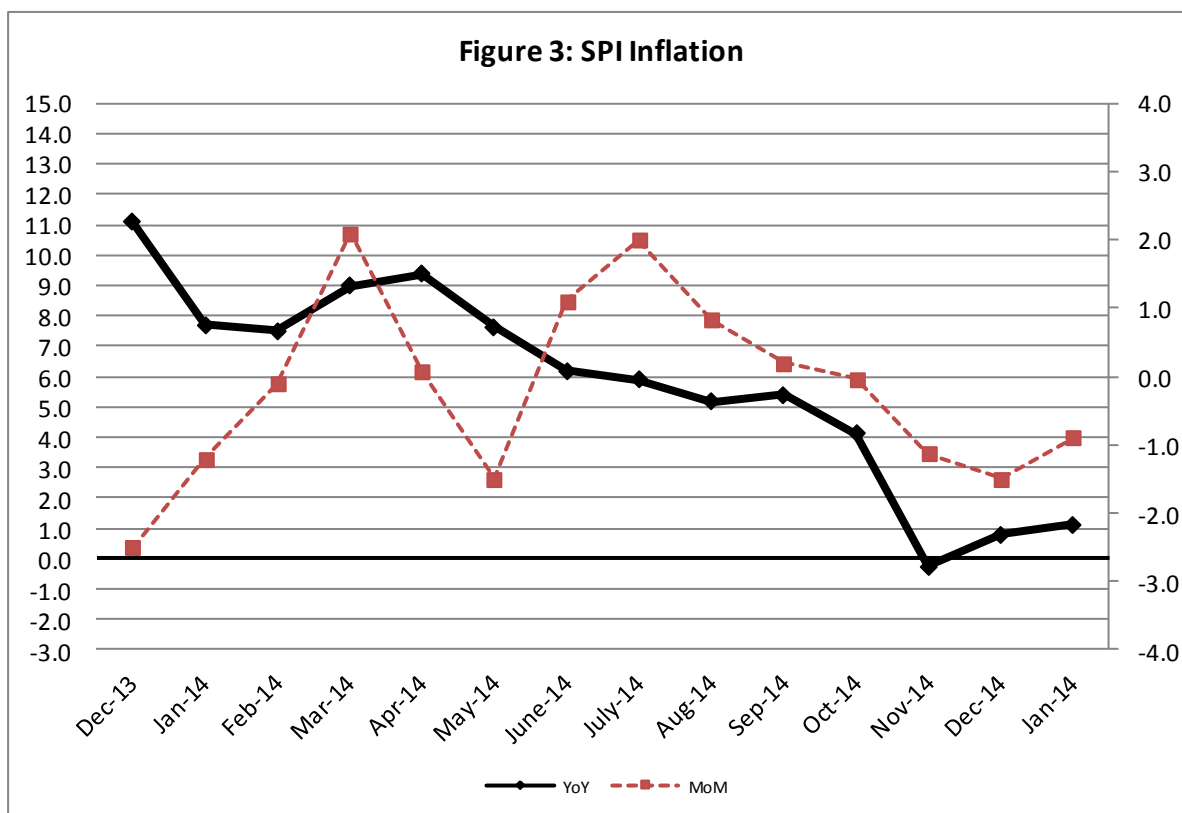
Non-food Items Increased: Motor Vehicle Tax (36.71%), Education (14.20%), Cotton Cloths (12.93%), Tailoring (10.98%), Marriage Hall Charges (10.90%) and Woolen Readymade Garments (10.75%).

Decreased: Kerosene Oil (23.77%) and Motor Fuel (18.79%).

III. Sensitive Price Indicator

Quintile-wise percentage changes YoY and MoM are given below in Table 3. The series from December 2013 to January 2015 is also graphed below in Figure 3.

Table 3 : Sensitive Price Indicator (Base 2007-08)					
Quintiles	Indices			% Change January 2015 over	
	January 2015	December 2014	January 2013	December 2014	January 2013
1	201.92	203.70	199.67	-0.87	1.13
2	208.09	209.85	205.44	-0.84	1.29
3	211.30	213.06	209.20	-0.83	1.00
4	212.83	214.64	211.43	-0.84	0.66
5	210.03	212.03	210.68	-0.94	-0.31
Combined	209.89	211.76	208.99	-0.88	0.43



IV. Wholesale Price Index

The Wholesale Price Index for January 2015 is decreased by 1.03% over December 2014. It is decreased by 2.42% over the corresponding month of the last year. YoY and MoM movements, from December 2013 to January 2015 are also graphed below in Figure 4.

Table 4 : Wholesale Price Index by Group of Commodities (Base 2007-08)

No.	Group	Group Weight (%)	Indices			% Change Jan 2015 over		Impact (in %age points) Jan 2015 over	
			Jan 2015	Dec 2014	Jan 2014	Dec 2014	Jan 2014	Dec 2014	Jan 2014
	General	100.00	206.11	208.25	211.23	-1.03	-2.42	-1.03	-2.42
1.	Agriculture, Forestry & Fishery Products	25.77	214.90	213.09	216.41	0.85	-0.70	0.22	-0.18
2.	Ores & Minerals, Electricity, Gas & Water	12.04	248.30	247.20	243.68	0.44	1.90	0.06	0.26
3.	Food Products, Beverages & Tobacco, Textiles, Apparel & Leather Products	31.11	204.71	205.77	201.47	-0.52	1.61	-0.16	0.48
	i. Food Products, Bev. & Tobacco	20.07	215.13	215.39	202.88	-0.12	6.04	-0.03	1.16
	ii. Textiles and Apparel	10.33	184.95	187.64	197.40	-1.43	-6.31	-0.13	-0.61
	iii. Leather Products	0.71	197.27	197.27	220.58	0.00	-10.56	0.00	-0.08
4.	Other Transportable Goods except Metal Products, Machinery & Equipment	22.37	187.85	199.17	217.85	-5.68	-13.77	-1.22	-3.18
5.	Metal Products, Machinery & Equipment	8.72	173.68	172.37	168.90	0.76	2.83	0.05	0.20

Main contributors to month-on-month and year-on-year percentage changes are given below and detail is given in Annexure B.

1. **Month-on-month** Top few commodities which varied from previous month i.e. December, 2014 are given below:-

Increased: Poultry (9.06%), Sugar crops (7.33%), Fish (5.42%), Eggs (5.34%), Pulses (3.91%), Other Cereal Flour (3.78%), Fiber Crops (3.75%), Cotton Seeds (3.50%), Hides (3.21%) and Quilts (3.03%).

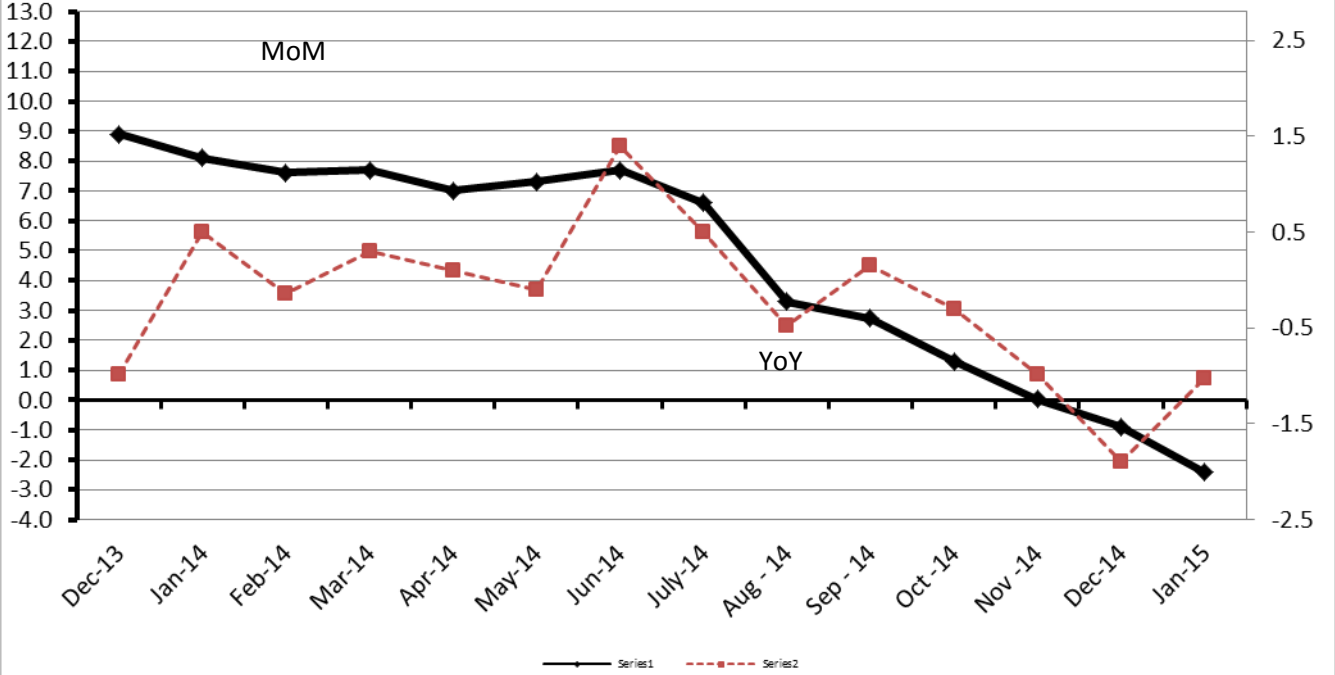
Decreased: Potatoes (27.80%), Furnace Oil (24.80%), Stimulant and Spice Crop (14.85%), kerosene Oil (13.56%), Insecticides (13.24%), Diesel Oil (11.10%), Motor Spirit (7.40%) and Vegetables (6.82%).

2. **Year-on-year** Top few commodities which varied from previous year i.e. January, 2014 are given below:-

Increased: Dyeing Material (34.97%), Leather without Hair (33.05%), Pesticides (28.68%), Readymade Garments (21.98%), Tobacco Products (19.85%), Fish (18.43%), Chemicals (16.38%), Processed Liquid Milk (16.25%) and Woolen Carpets (16.23%).

Decreased: Furnace Oil (44.75%), Motor Spirit (30.59%), Diesel (30.05%), Fiber Crops (28.53%), Kerosene Oil (27.25%) and Cotton Yarn (20.56%).

Figure 4: WPI Inflation



Annexure A: Consumer Price Index Numbers by Commodity Groups & Commodities (2007-08=100)

Item and Specification	Weight	Index Numbers			% Change in Jan 2015 over	
		Jan 15	Dec 14	Jan 14	Dec 2014	Jan 2014
General	100.0000	196.95	196.79	189.60	+ 0.08	+ 3.88
Food and non-alcoholic Bevera	34.8343	214.11	215.18	209.64	- 0.50	+ 2.13
01 Wheat	0.3477	207.59	207.94	233.51	- 0.17	- 11.10
02 Wheat Flour	4.1648	219.21	221.32	231.86	- 0.95	- 5.46
03 Wheat Product	0.0959	218.94	220.09	221.40	- 0.52	- 1.11
04 Besan	0.1500	177.30	173.03	172.90	+ 2.47	+ 2.54
05 Rice	1.5821	186.26	190.01	193.88	- 1.97	- 3.93
06 Cereals	0.1563	239.85	239.36	230.58	+ 0.20	+ 4.02
07 Bakery & Confectionary	1.1550	206.87	206.84	199.21	+ 0.01	+ 3.85
08 Nimco	0.4574	238.64	238.29	220.99	+ 0.15	+ 7.99
09 Meat	2.4303	244.17	244.09	231.91	+ 0.03	+ 5.29
10 Chicken	1.3596	203.62	193.92	222.46	+ 5.00	- 8.47
11 Fish	0.2970	224.92	222.61	214.11	+ 1.04	+ 5.05
12 Milk Fresh	6.6800	249.59	249.48	232.61	+ 0.04	+ 7.30
13 Milk Products	0.6338	242.72	242.58	227.93	+ 0.06	+ 6.49
14 Milk Powder	0.1129	224.95	225.97	203.41	- 0.45	+ 10.59
15 Eggs	0.4555	238.54	229.54	216.04	+ 3.92	+ 10.41
16 Mustard Oil	0.0952	158.89	158.68	159.97	+ 0.13	- 0.68
17 Cooking Oil	1.7538	154.81	158.40	161.75	- 2.27	- 4.29
18 Vegetable Ghee	2.0714	151.78	153.52	158.24	- 1.13	- 4.08
19 Dry Fruits	0.2543	252.91	249.19	231.25	+ 1.49	+ 9.37
20 Fresh Fruits	1.8649	203.61	205.42	180.15	- 0.88	+ 13.02
21 Pulse Masoor	0.2712	190.88	189.08	171.13	+ 0.95	+ 11.54
22 Pulse Moong	0.2336	312.54	306.98	256.55	+ 1.81	+ 21.82
23 Pulse Mash (Washed)	0.2098	226.86	227.22	191.91	- 0.16	+ 18.21
24 Pulse Gram	0.2361	179.94	173.09	161.82	+ 3.96	+ 11.20
25 Gram Whole	0.1616	181.39	178.80	176.10	+ 1.45	+ 3.00
26 Beans	0.0269	237.78	243.06	243.84	- 2.17	- 2.49
27 Potatoes	0.4776	197.47	264.59	201.30	- 25.37	- 1.90
28 Onion	0.5417	148.71	146.98	225.89	+ 1.18	- 34.17
29 Tomatoes	0.4496	170.34	158.75	167.79	+ 7.30	+ 1.52
30 Fresh Vegetables	1.6571	213.45	216.00	198.94	- 1.18	+ 7.29
31 Sugar	1.0445	193.68	196.68	188.01	- 1.53	+ 3.02
32 Gur	0.0220	254.72	253.17	243.92	+ 0.61	+ 4.43
33 Honey	0.0446	302.61	302.49	274.70	+ 0.04	+ 10.16
34 SweetMeat	0.2483	233.27	232.52	223.94	+ 0.32	+ 4.17
35 Beverages	1.1990	206.18	206.55	188.24	- 0.18	+ 9.53
36 Jam, Tomato Ketchup & Pickles	0.2454	204.39	203.75	190.94	+ 0.31	+ 7.04
37 Condiments	0.2656	255.21	252.97	228.82	+ 0.89	+ 11.53
38 Spices	0.5441	234.07	234.25	216.53	- 0.08	+ 8.10
39 Tea	0.8377	215.61	215.38	238.69	+ 0.11	- 9.67
Alcoholic Beverages, Tobacco	1.4135	266.62	266.63	221.80	+ 0.00	+ 20.21
40 Cigarettes	1.3906	267.63	267.63	222.30	+ 0.00	+ 20.39
41 Betel Leaves & Nuts	0.0229	205.14	206.01	191.06	- 0.42	+ 7.37
Clothing and footwear	7.5708	214.32	213.88	198.28	+ 0.21	+ 8.09
42 Cotton Cloth	1.7286	207.71	207.60	183.92	+ 0.05	+ 12.93
43 Woolen Cloth	0.8759	232.93	232.70	220.65	+ 0.10	+ 5.57
44 Readymade Garments	0.9739	213.31	213.12	197.37	+ 0.09	+ 8.08
45 Woolen Readymade Garments	0.3964	240.56	239.99	217.21	+ 0.24	+ 10.75
46 Hosiery	0.5094	225.79	225.57	207.84	+ 0.10	+ 8.64
47 Dopatta	0.4412	231.18	230.50	215.58	+ 0.30	+ 7.24
48 Cleaning and Laundry	0.2110	236.18	235.55	219.82	+ 0.27	+ 7.44
49 Tailoring	0.8840	265.50	263.37	239.23	+ 0.81	+ 10.98
50 Footwear	1.5504	164.37	164.29	163.02	+ 0.05	+ 0.83

Annexure A: Consumer Price Index Numbers by Commodity Groups & Commodities (2007-08=100)

Item and Specification	Weight	Index Numbers			% Change in Jan 2015 over	
		Jan 15	Dec 14	Jan 14	Dec 2014	Jan 2014
Housing, water, Elec., Gas an	29.4149	176.51	174.04	166.93	+ 1.42	+ 5.74
51 House Rent	21.8149	165.29	162.06	153.82	+ 1.99	+ 7.46
52 Construction Input Items	0.5623	237.26	237.53	226.10	- 0.11	+ 4.94
53 Construction Wage Rates	0.3331	206.59	204.99	192.79	+ 0.78	+ 7.16
54 Water Supply	0.4971	149.92	149.92	149.57	+ 0.00	+ 0.23
55 Electricity	4.3985	231.52	231.52	227.44	+ 0.00	+ 1.79
56 Gas	1.5756	143.81	143.81	143.81	+ 0.00	+ 0.00
57 Kerosene Oil	0.0057	226.23	243.33	296.77	- 7.03	- 23.77
58 Firewood Whole	0.2277	277.90	269.83	265.82	+ 2.99	+ 4.54
Furnishing and household equi	4.2082	209.37	208.80	196.74	+ 0.27	+ 6.42
59 Furniture	0.3315	201.28	200.42	188.50	+ 0.43	+ 6.78
60 Household Textiles	0.6489	207.52	206.70	195.40	+ 0.40	+ 6.20
61 Household Equipment	0.5936	172.44	172.19	166.28	+ 0.15	+ 3.70
62 Utensils	0.3212	211.44	210.77	198.04	+ 0.32	+ 6.77
63 Plastic Products	0.2547	200.86	200.35	191.12	+ 0.25	+ 5.10
64 Washing Soaps & Detergents	0.7893	223.21	223.15	214.27	+ 0.03	+ 4.17
65 Sewing Needle & Dr Cell	0.1496	183.97	183.97	175.61	+ 0.00	+ 4.76
66 Household Servant	1.0432	227.11	226.18	207.39	+ 0.41	+ 9.51
67 Marriage Hall Charges	0.0762	231.30	230.52	208.57	+ 0.34	+ 10.90
Health	2.1868	176.97	176.31	166.84	+ 0.37	+ 6.07
68 Drugs & Medicines	1.2667	148.00	147.65	142.28	+ 0.24	+ 4.02
69 Medical Equipments	0.0080	222.46	222.46	209.84	+ 0.00	+ 6.01
70 Doctor (MBBS) Clinic Fee	0.5904	238.49	238.49	219.23	+ 0.00	+ 8.79
71 Medical Tests	0.3217	177.02	173.89	166.32	+ 1.80	+ 6.43
Transport	7.2023	181.22	185.17	197.19	- 2.13	- 8.10
72 Motor Vehicles	0.6630	163.77	163.77	162.19	+ 0.00	+ 0.97
73 Motor Vehicle Accessories	0.2439	230.17	230.12	222.42	+ 0.02	+ 3.48
74 Motor Fuel	3.0269	157.47	164.04	193.91	- 4.01	- 18.79
75 Mechanical Service	0.4552	210.62	210.62	200.52	+ 0.00	+ 5.04
76 Motor Vehicle Tax	0.1099	210.18	210.18	153.74	+ 0.00	+ 36.71
77 Transport Services	2.7034	201.54	204.73	208.36	- 1.56	- 3.27
Communication	3.2198	130.13	130.13	129.79	+ 0.00	+ 0.26
78 Postal Services	0.0662	226.10	226.10	215.89	+ 0.00	+ 4.73
79 Communication & Apparatus	3.1536	128.12	128.11	127.98	+ 0.01	+ 0.11
Recreation and culture	2.0227	189.63	189.60	183.34	+ 0.02	+ 3.43
80 Recreation & Culture	0.8634	128.06	128.06	126.94	+ 0.00	+ 0.88
81 Text Books	0.5706	280.89	280.89	267.10	+ 0.00	+ 5.16
82 Newspapers	0.1934	175.42	175.42	172.95	+ 0.00	+ 1.43
83 Stationery	0.3953	199.33	199.16	190.71	+ 0.09	+ 4.52
Education	3.9431	192.41	192.41	168.48	+ 0.00	+ 14.20
84 Education	3.9431	192.41	192.41	168.48	+ 0.00	+ 14.20
Restaurants and hotels	1.2286	244.90	244.59	231.11	+ 0.13	+ 5.97
85 Readymade Food	1.2286	244.90	244.59	231.11	+ 0.13	+ 5.97
Misc. goods and services	2.7550	221.30	220.73	211.24	+ 0.26	+ 4.76
86 Personal Care	1.4935	205.06	204.68	193.97	+ 0.19	+ 5.72
87 Cosmetics	0.3853	189.35	187.35	176.55	+ 1.07	+ 7.25
88 Blades	0.0322	185.62	185.42	182.08	+ 0.11	+ 1.94
89 Personal Equipments	0.8440	265.97	265.72	258.77	+ 0.09	+ 2.78

Annexure B: Wholesale Price Indices by Major Groups & Commodities

(2007-08=100)

Item and Specification	Weight	Index Numbers			% Change in Jan 2015 over			
		Jan 15	Dec 14	Jan 14	Dec 2014	Jan 2014		
General	100.0000	206.11	208.25	211.23	-	1.03	-	2.42
Agriculture Forestry & Fisher	25.7674	214.90	213.09	216.41	+	0.85	-	0.70
001 Wheat	0.6297	210.71	210.79	243.48	-	0.04	-	13.46
002 Maize	0.6764	186.33	186.45	176.18	-	0.06	+	5.76
003 Rice	2.4413	168.68	172.32	177.05	-	2.11	-	4.73
004 Sorghum / Jowar	0.0214	287.71	280.16	276.14	+	2.69	+	4.19
005 Millet / Bajra	0.0374	162.43	167.42	174.47	-	2.98	-	6.90
006 Vegetables	1.2441	199.24	213.83	215.08	-	6.82	-	7.36
007 Fresh Fruits	1.5144	211.03	215.51	187.74	-	2.08	+	12.41
008 Dry Fruits	0.2478	227.77	224.99	203.14	+	1.24	+	12.12
009 Cotton Seeds	1.1511	199.35	192.60	188.10	+	3.50	+	5.98
010 Other Oil Seeds	0.0722	186.61	187.36	184.14	-	0.40	+	1.34
011 Edible Roots / Potatoes	0.2540	199.26	275.99	217.35	-	27.80	-	8.32
012 Stimulant & Spice Crops	0.1634	301.52	354.12	329.72	-	14.85	-	8.55
013 Pulses	0.4901	212.26	204.27	187.07	+	3.91	+	13.47
014 Sugar Crops	1.0725	287.55	267.92	267.92	+	7.33	+	7.33
015 Fibre Crops	5.3169	161.74	155.90	226.32	+	3.75	-	28.53
016 Unmanufactured Tobacco	0.0742	217.23	217.23	188.70	+	0.00	+	15.12
017 Poultry	0.5633	209.94	192.50	238.28	+	9.06	-	11.89
018 Raw Milk from Bovine Animals	7.0279	251.69	251.69	224.04	+	0.00	+	12.34
019 Eggs	0.5034	245.22	232.79	218.04	+	5.34	+	12.47
020 Raw Animal Materials / Wool	0.0351	181.52	178.68	156.85	+	1.59	+	15.73
021 Hides & Fur Skins, Raw	0.4834	162.19	157.14	147.80	+	3.21	+	9.74
022 Fuel Wood in Logs	0.0179	256.69	250.46	239.54	+	2.49	+	7.16
023 Fish Live Fresh or Chilled	1.7295	288.90	274.05	243.95	+	5.42	+	18.43
Ores/Minerals, Elec., Gas & W	12.0389	248.30	247.20	243.68	+	0.44	+	1.90
024 Coal not Agglomerated	0.7508	223.53	223.53	223.53	+	0.00	+	0.00
025 Natural Gas Liquified	5.7385	206.29	203.99	204.61	+	1.13	+	0.82
026 Salt & Pure Sodium Chloride	0.0584	247.16	247.16	228.23	+	0.00	+	8.29
027 Electrical Energy	5.4912	295.61	295.61	287.44	+	0.00	+	2.84
Food, Beverages, Tobacco, Textil	31.1122	204.71	205.77	201.47	-	0.52	+	1.61
Food Products, Beverages &	20.0718	215.13	215.39	202.88	-	0.12	+	6.04
028 Meat of Animals	3.4559	257.79	257.59	239.95	+	0.08	+	7.43
029 Vegetables & Fruit Juice	0.0058	198.31	197.07	193.91	+	0.63	+	2.27
030 Dried Fruits & Nuts	0.1733	232.57	229.74	222.32	+	1.23	+	4.61
031 Fruit Juices	0.3880	172.22	171.93	166.02	+	0.17	+	3.73
032 Vegetable Oils Refined	1.9242	159.94	161.32	161.86	-	0.86	-	1.19
033 Vegetable Ghee	1.5632	130.81	132.27	142.28	-	1.10	-	8.06
034 Oil Cakes	0.9611	198.84	200.15	191.76	-	0.65	+	3.69
035 Processed Liquid Milk	4.4437	245.21	245.21	210.94	+	0.00	+	16.25
036 Milk & Cream in Solid Form	0.0316	222.86	222.24	202.00	+	0.28	+	10.33
037 Ice Cream	0.0047	219.91	219.91	209.79	+	0.00	+	4.82
038 Dairy Products N.E.C	0.0117	238.90	238.90	218.81	+	0.00	+	9.18
039 Wheat Flour	2.3034	200.35	202.20	214.41	-	0.91	-	6.56
040 Other Cereal Flour	0.0604	148.21	142.81	133.04	+	3.78	+	11.40
041 Sugar Refined	1.7975	206.01	204.57	196.44	+	0.70	+	4.87
042 Chocolate	0.0139	99.19	99.19	99.19	+	0.00	+	0.00
043 Sugar Confectionary	0.0738	102.28	102.28	102.28	+	0.00	+	0.00
044 Coffee & Tea	0.7303	189.39	188.37	214.63	+	0.54	-	11.76
045 Spices	0.1449	189.65	188.69	190.97	+	0.51	-	0.69
046 Other Food Products	0.0336	298.01	296.60	308.48	+	0.48	-	3.39
047 Mineral Water	0.0207	187.86	185.63	181.84	+	1.20	+	3.31
048 Beverages	0.6303	171.52	171.52	152.12	+	0.00	+	12.75
049 Tobacco Products	1.2998	290.52	290.52	242.41	+	0.00	+	19.85
Textiles & Apparels	10.3289	184.95	187.64	197.40	-	1.43	-	6.31
050 Cotton Yarn	5.2491	172.44	177.90	217.06	-	3.07	-	20.56
051 Nylon Yarn	0.1719	156.04	158.14	180.95	-	1.33	-	13.77
052 Blended Yarn	0.1689	190.28	191.73	201.89	-	0.76	-	5.75
053 Woven Fabrics	0.0128	258.39	258.39	226.82	+	0.00	+	13.92
054 Cotton Fabrics	0.6343	200.51	200.51	187.77	+	0.00	+	6.78
055 Other Fabrics	1.1016	207.48	206.11	179.06	+	0.66	+	15.87

Annexure B: Wholesale Price Indices by Major Groups & Commodities

(2007-08=100)

Item and Specification	Weight	Index Numbers			% Change in Jan 2015 over			
		Jan 15	Dec 14	Jan 14	Dec 2014	Jan 2014		
056 Silk & Reyon Fabrics	0.7350	177.28	177.28	161.09	+	0.00	+	10.05
057 Towels	0.1235	265.62	265.62	234.25	+	0.00	+	13.39
058 Blankets	0.0029	235.86	235.86	219.66	+	0.00	+	7.38
059 Bed Sheets	0.0913	253.21	253.21	236.05	+	0.00	+	7.27
060 Quilts	0.0019	196.84	191.05	172.42	+	3.03	+	14.16
061 Woolen Carpets	0.0383	132.14	132.14	113.69	+	0.00	+	16.23
062 Synthetic Carpets	0.0566	126.27	126.27	116.10	+	0.00	+	8.76
063 Hosiery Products	0.8832	215.35	215.35	195.18	+	0.00	+	10.33
064 Readymade Garments	1.0576	186.77	186.77	153.12	+	0.00	+	21.98
Leather Products	0.7115	197.27	197.27	220.57	+	0.00	-	10.56
065 Leather Without Hair	0.2973	215.02	215.02	161.61	+	0.00	+	33.05
066 Other Leather N.E.C	0.2567	215.39	215.39	341.85	+	0.00	-	36.99
067 Footwears	0.1575	134.22	134.22	134.22	+	0.00	+	0.00
Other Transportable Goods	22.3659	187.85	199.17	217.85	-	5.68	-	13.77
068 Timber	0.0165	202.05	196.61	174.55	+	2.77	+	15.75
069 Printing Paper	0.4279	169.34	169.34	169.75	+	0.00	-	0.24
070 Hard Board	0.1579	229.17	229.17	229.17	+	0.00	+	0.00
071 Coke	0.2797	163.45	163.45	163.45	+	0.00	+	0.00
072 Motor Spirit	1.5336	132.22	142.78	190.50	-	7.40	-	30.59
073 Diesel Oil	5.2664	195.49	219.90	279.46	-	11.10	-	30.05
074 Kerosine Oil	0.2151	209.53	242.40	288.01	-	13.56	-	27.25
075 Furnace Oil	3.2664	101.36	134.79	183.45	-	24.80	-	44.75
076 Mobil Oil	0.7114	201.53	201.53	193.09	+	0.00	+	4.37
077 Chemicals	1.7720	199.84	198.36	171.72	+	0.75	+	16.38
078 Dyeing Material	0.1539	145.16	143.77	107.55	+	0.97	+	34.97
079 Fertilizers	2.8657	274.54	272.69	264.18	+	0.68	+	3.92
080 Pesticides	0.2763	290.15	283.64	225.48	+	2.30	+	28.68
081 Insecticides	0.1276	149.54	172.37	133.78	-	13.24	+	11.78
082 Paints & Varnishes	0.1916	288.63	285.78	267.31	+	1.00	+	7.98
083 Medicines	1.1428	145.19	145.19	139.69	+	0.00	+	3.94
084 Soaps & Detergents	0.8168	178.31	178.23	181.22	+	0.04	-	1.61
085 Auto Tyres	0.2703	192.43	192.43	185.73	+	0.00	+	3.61
086 Plastic Products	0.4550	221.88	218.51	202.31	+	1.54	+	9.67
087 Glass sheets	0.2089	226.39	226.39	207.75	+	0.00	+	8.97
088 Other Glass Articles	0.1635	242.20	242.20	214.09	+	0.00	+	13.13
089 Ceramics & Sanitary Fixture	0.0244	216.53	216.53	192.64	+	0.00	+	12.40
090 Bricks, Blocks & Tiles	0.1566	204.99	206.80	197.12	-	0.88	+	3.99
091 Cement	1.8145	208.27	208.92	205.56	-	0.31	+	1.32
092 Bed Foam	0.0006	156.67	156.67	149.67	+	0.00	+	4.68
093 Matches	0.0505	143.20	143.20	143.20	+	0.00	+	0.00
Metal Product, Machinery & Eq	8.7156	173.68	172.37	168.90	+	0.76	+	2.83
094 Pig Iron	0.0593	128.97	128.97	128.97	+	0.00	+	0.00
095 Steel Bar & Sheets	1.4022	144.48	145.97	140.23	-	1.02	+	3.03
096 Pipe Fittings	0.0780	191.94	191.94	168.33	+	0.00	+	14.03
097 Steel Products	0.3879	173.80	173.80	170.19	+	0.00	+	2.12
098 Engines & Motors	0.0046	109.07	109.07	109.07	+	0.00	+	0.00
099 Vacuum Pumps	0.0155	115.39	115.39	115.39	+	0.00	+	0.00
100 Air Conditioners	0.0049	195.53	195.53	181.12	+	0.00	+	7.96
101 Cultivators	0.0551	226.90	226.90	226.90	+	0.00	+	0.00
102 Chuff Cutter	0.1293	149.20	149.20	144.94	+	0.00	+	2.94
103 Tractors	0.0028	214.54	214.54	193.29	+	0.00	+	10.99
104 Lathe Machines	0.0525	208.81	208.81	208.81	+	0.00	+	0.00
105 Concrete Mixture	0.0107	138.83	138.83	138.83	+	0.00	+	0.00
106 Fridge, WashM, SewM, Fans, Iron	1.1645	198.06	198.06	192.24	+	0.00	+	3.03
107 Electric Wires	0.0912	190.43	190.43	178.73	+	0.00	+	6.55
108 Lighting Equipments	1.4431	168.19	165.30	162.86	+	1.75	+	3.27
109 Radio & Television	0.1843	126.49	126.49	126.49	+	0.00	+	0.00
110 Motor Vehicles	0.0244	183.03	183.03	182.16	+	0.00	+	0.48
111 Motorcycles	0.2570	128.20	128.20	125.58	+	0.00	+	2.09
112 Bicycles	3.3483	185.63	182.84	180.99	+	1.53	+	2.56