



Monthly Review on Price Indices



July, 2014
(Base 2007-08)

Government of Pakistan
Statistics Division
Pakistan Bureau of Statistics
Islamabad

I. Inflation in Brief

1. CPI inflation, General, increased by 7.9% on year-on-year basis in July 2014 as compared to 8.2% in the previous month and by 8.3% in July 2013. On month-on-month basis, it increased by 1.7% in July 2014 as compared to 0.6% in the previous month 2.0% in July 2013.
2. Core inflation measured by non-food non-energy CPI (Core NFNE) increased by 8.3% on (YoY) basis in July 2014 as compared to 8.7% in the previous month and by 8.2% in July 2013. On (MoM) basis, it increased by 1.1% in July 2014 as compared to 0.4% in the previous month and 1.5% in July 2013.
3. Core inflation, measured by 20% weighted trimmed mean CPI (Core Trimmed) increased by 7.6% on (YoY) basis in July 2014 as compared to 7.9% in the previous month and by 7.8% in July 2013. On (MoM) basis, it increased by 0.8% in July 2014 as compared to 0.3% in the previous month and by 1.2% in July 2013.
4. SPI inflation on YoY basis increased by 5.9% in July 2014 as compared to 6.2% a month earlier and 9.8% in July 2013. On MoM basis, it increased by 2.0% in July 2014 as compared to an increase of 1.1% a month earlier and increased by 2.3% in July 2013.
5. WPI inflation on YoY basis increased by 6.6% in July 2014 as compared to 7.7% a month earlier and 6.5% in July 2013. WPI inflation on MoM basis increased by 0.5% in July 2014 as compared to 1.4% a month earlier and increased by 1.6% in July 2013.
6. Figures 1 and 2 show graphically the data of Table 1. Table 1.1 shows "Period Average" and "YoY" percent changes in indices of three years.

| Table 1: Inflation (%) (Base 2007-08) | | | | | | | | | | | | | | |
|---------------------------------------|---------|------|------|------------------|----------|-----|----------------|-----|---------|-----|-------|------|------|------|
| Period | CPI | | | | | | Core Inflation | | | | SPI** | | WPI | |
| | General | | Food | | Non-food | | NFNE* | | Trimmed | | YoY | MoM | YoY | MoM |
| | YoY | MoM | YoY | MoM | YoY | MoM | YoY | MoM | YoY | MoM | | | | |
| Jun 13 | 5.9 | 0.7 | 7.9 | 1.1 | 4.4 | 0.5 | 7.8 | 0.4 | 6.8 | 0.6 | 7.9 | 2.5 | 5.2 | 1.0 |
| Jul 13 | 8.3 | 2.0 | 9.2 | 3.0 | 7.6 | 1.3 | 8.2 | 1.5 | 7.8 | 1.2 | 9.8 | 2.3 | 6.5 | 1.6 |
| Aug 13 | 8.5 | 1.2 | 10.3 | 2.0 | 7.3 | 0.6 | 8.5 | 0.6 | 7.9 | 0.6 | 10.1 | 1.5 | 8.3 | 2.6 |
| Sep 13 | 7.4 | -0.3 | 7.9 | -1.5 | 7.0 | 0.6 | 8.6 | 0.5 | 7.6 | 0.6 | 8.8 | 0.1 | 8.7 | 0.7 |
| Oct 13 | 9.1 | 2.0 | 9.8 | 1.7 | 8.6 | 2.2 | 8.4 | 0.9 | 9.0 | 0.8 | 10.5 | 1.2 | 9.8 | 1.1 |
| Nov 13 | 10.9 | 1.3 | 13.0 | 2.6 | 9.4 | 0.3 | 8.5 | 0.3 | 9.2 | 0.4 | 14.1 | 3.2 | 10.4 | 0.2 |
| Dec 13 | 9.2 | -1.3 | 9.3 | -3.3 | 9.1 | 0.2 | 8.2 | 0.2 | 8.7 | 0.4 | 11.1 | -2.5 | 8.9 | -1.0 |
| Jan 14 | 7.9 | 0.5 | 7.2 | 0.0 ¹ | 8.4 | 0.9 | 8.0 | 1.0 | 8.2 | 0.6 | 7.7 | -1.2 | 8.1 | 0.5 |
| Feb 14 | 7.9 | -0.3 | 7.6 | -1.0 | 8.2 | 0.2 | 7.8 | 0.2 | 8.1 | 0.2 | 7.5 | -0.1 | 7.6 | -0.1 |
| Mar 14 | 8.5 | 1.0 | 9.3 | 2.1 | 8.0 | 0.2 | 7.6 | 0.3 | 8.1 | 0.3 | 9.0 | 2.1 | 7.7 | 0.3 |
| Apr 14 | 9.2 | 1.7 | 9.9 | 2.0 | 8.7 | 1.5 | 8.5 | 1.9 | 9.0 | 0.9 | 9.4 | 0.1 | 7.0 | 0.1 |
| May 14 | 8.3 | -0.3 | 7.4 | -1.2 | 9.0 | 0.4 | 8.7 | 0.5 | 8.3 | 0.3 | 7.7 | -1.5 | 7.3 | -0.1 |
| June14 | 8.2 | 0.6 | 7.4 | 1.0 | 8.9 | 0.3 | 8.7 | 0.4 | 7.9 | 0.3 | 6.2 | 1.1 | 7.7 | 1.4 |
| July14 | 7.9 | 1.7 | 7.0 | 2.7 | 8.5 | 1.0 | 8.3 | 1.1 | 7.6 | 0.8 | 5.9 | 2.0 | 6.6 | 0.5 |

*NFNE is non-food non-energy,

** SPI for quintile 1

¹ Actual figure is -0.04, displayed in rounded figure

| Table 1.1 : YoY % Changes of Indices (Base 2007-08) | | | |
|---|--------------------------|---------|---------|
| Index | July over July % Changes | | |
| | 2014-15 | 2013-14 | 2012-13 |
| CPI | 7.88 | 8.26 | 9.60 |
| SPI | 7.64 | 9.80 | 7.67 |
| WPI | 6.55 | 6.55 | 7.22 |

Figure 1: CPI Inflation YoY, Special Indices

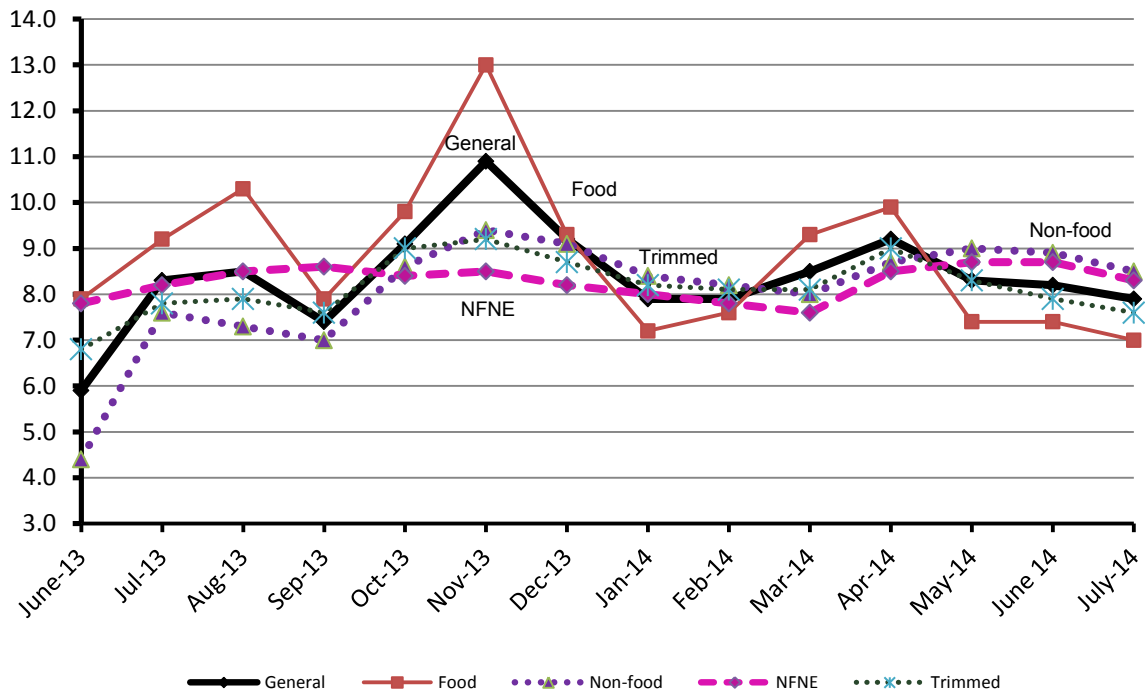
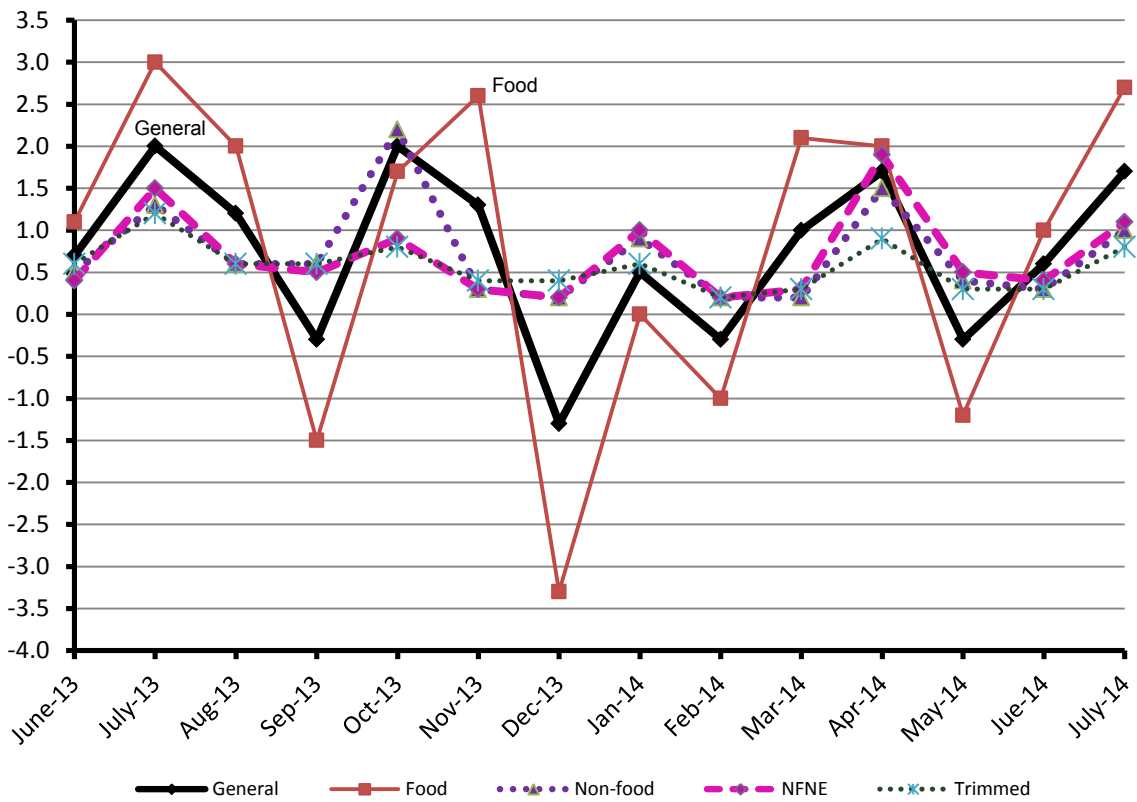


Figure 2: CPI Inflation MoM, Special Indices



II. Price Index (CPI)

The Consumer Price Index of July, 2014 has increased by 1.70% over June, 2014 and increased by 7.88% over corresponding month of the last year, i.e. July 2013.

Table 2 : Consumer Price Index by Group of Commodities and Services (Base 2007-08)

| No | Group | Group Weight (%) | Indices | | | % Change July 2014 Over | | Impact (In % points) July 2014 Over | |
|-----|--|------------------|-----------|-----------|-----------|-------------------------|-----------|-------------------------------------|-----------|
| | | | July 2014 | June 2014 | July 2013 | June 2014 | July 2013 | June 2014 | July 2013 |
| | General | 100.00 | 198.05 | 194.74 | 183.58 | 1.70 | 7.88 | 1.70 | 7.88 |
| 1. | Food & Non-alcoholic Bev. | 34.83 | 220.48 | 214.50 | 207.61 | 2.79 | 6.20 | 1.07 | 2.44 |
| | <i>Non-perishable Food Items</i> | 29.84 | 213.61 | 212.56 | 203.26 | 0.49 | 5.09 | 0.16 | 1.68 |
| | <i>Perishable Food Items</i> | 4.99 | 261.59 | 226.07 | 233.67 | 15.71 | 11.95 | 0.91 | 0.76 |
| 2. | Alcoholic Bev. & Tobacco | 1.41 | 265.82 | 259.28 | 217.46 | 2.52 | 22.24 | 0.05 | 0.37 |
| 3. | Clothing & Footwear | 7.57 | 209.51 | 206.96 | 190.42 | 1.23 | 10.03 | 0.10 | 0.79 |
| 4. | Housing, Water, Electricity, Gas & Fuels | 29.41 | 171.62 | 169.53 | 157.54 | 1.23 | 8.94 | 0.31 | 2.26 |
| 5. | Furnishing & Household Equipment Maintenance | 4.21 | 204.42 | 204.09 | 187.23 | 0.16 | 9.18 | 0.01 | 0.39 |
| 6. | Health | 2.19 | 173.40 | 172.75 | 161.45 | 0.38 | 7.40 | 0.01 | 0.14 |
| 7. | Transport | 7.20 | 198.38 | 195.27 | 188.83 | 1.59 | 5.06 | 0.11 | 0.37 |
| 8. | Communication | 3.22 | 129.85 | 129.88 | 129.62 | -0.02 | 0.18 | 0.00 | 0.00 |
| 9. | Recreation & Culture | 2.02 | 188.76 | 188.74 | 178.48 | 0.01 | 5.76 | 0.00 | 0.11 |
| 10. | Education | 3.94 | 191.33 | 190.90 | 164.25 | 0.23 | 16.49 | 0.01 | 0.58 |
| 11. | Restaurants & Hotels | 1.23 | 239.23 | 238.76 | 213.87 | 0.20 | 11.86 | 0.00 | 0.17 |
| 12. | Miscellaneous | 2.76 | 216.98 | 215.12 | 200.91 | 0.86 | 8.00 | 0.03 | 0.24 |

Main contributors to month-on-month and year-on-year percentage changes are given below and detail is given in Annexure A.

1. **Month-on-month** Top few commodities which varied from previous month i.e. June 2014 are given below:-

Food Items Increased: Tomatoes (43.71%), Onions (18.17%), Potatoes (16.43%), Fresh Fruits (15.22%), Fresh Vegetables (10.96%), Eggs (5.73%), Sugar (3.05%), Cigarettes (2.54%), Honey (1.43%), Wheat (1.38%), Beverages (1.35%), Dry Fruites (1.33%), Gur (1.32%), and Betel Leaves & Nuts (1.10%).

Decreased: Besan (1.56%), Pulse Gram (1.17%), Gram whole (0.35%), Vegetable Ghee (0.32%), Tea (0.31%), and Pulse Masoor (0.27%).

Non-food Items Increased: Motor Vehicle Tax (36.71%), Tailoring (2.58%), Cotton Cloth (2.10%), Motor Fuel (2.00%), Readymade Garments (1.89%), House Rent (1.76%), and Personal Equipments (1.56%).

Decreased: Firewood Whole (0.25%) and Kerosene Oil (0.14%).

2. **Year-on-year:** Top few commodities which varied from previous year i.e. July 2013 are given below:-

Food Items Increased: Potatoes (122.60%), Pulse Moong (27.17%), Cigarettes (22.46%), Fresh Fruits (16.89%), Milk Powder (16.47%), Pulse Masoor (14.47%), and Condiments (13.83%).

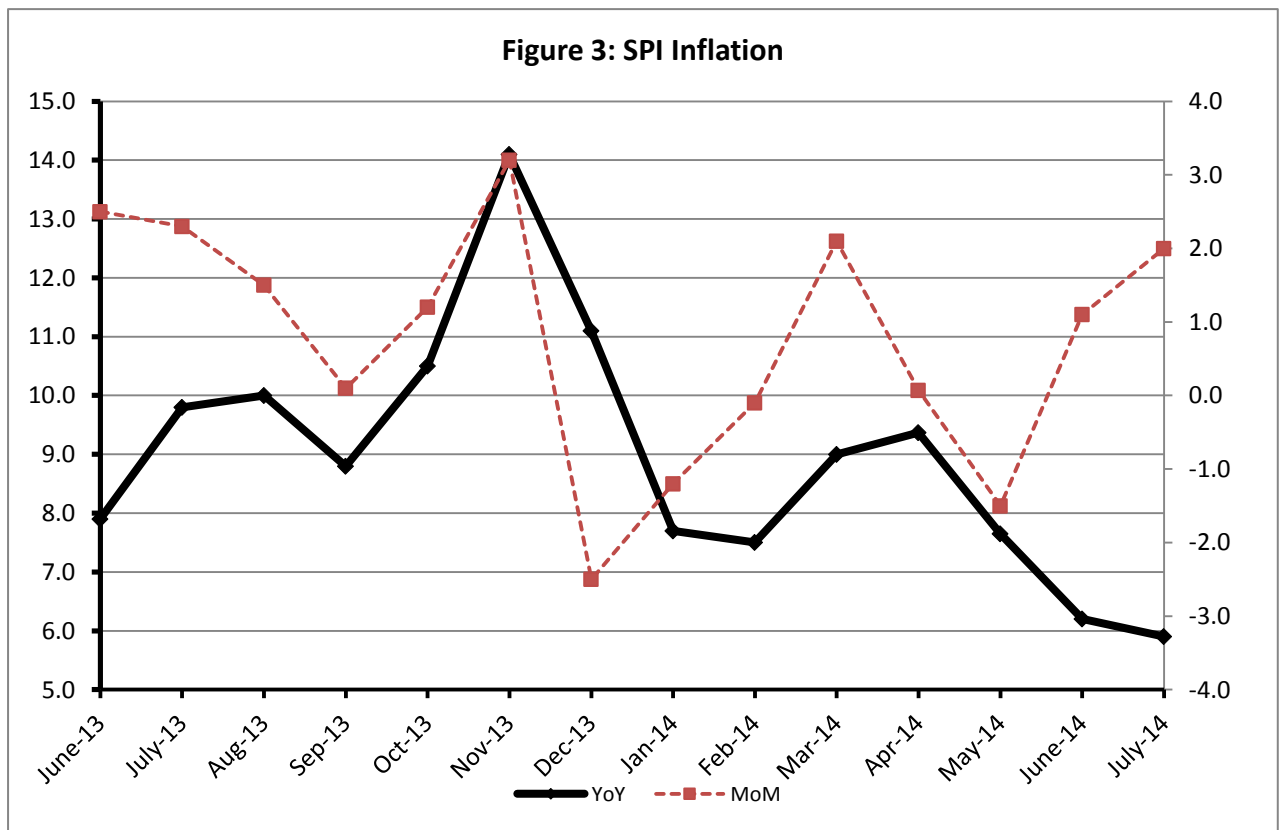
Decreased: Tomatoes (48.10%), Tea (18.05%), Onions (7.61%), Pulse Gram (6.93%), and Besan (5.25%).

Non-food Items Increased: Motor Vehicle Tax (36.71%), Education (16.49%), Cotton Cloth (15.95%), Electricity (15.82%), Doctor (MBBS) Clinic Fee (14.41%), Readymade Garments (13.58%), and Woolen Readymade Garments (13.45%).

III. Sensitive Price Indicator

Quintile-wise percentage changes YoY and MoM are given below in Table 3. The series from June 2013 to July 2014 is also graphed below in Figure 3.

| Table 3 : Sensitive Price Indicator (Base 2007-08) | | | | | |
|--|---------------|---------------|---------------|-------------------------|-------------|
| Quintiles | Indices | | | % Change July 2014 over | |
| | Jul-14 | Jun-14 | Jul-13 | Jun-14 | Jul-13 |
| 1 | 207.04 | 203.07 | 195.49 | 1.95 | 5.91 |
| 2 | 213.40 | 209.47 | 201.80 | 1.88 | 5.75 |
| 3 | 216.40 | 212.49 | 200.49 | 1.84 | 7.94 |
| 4 | 218.64 | 214.79 | 201.84 | 1.79 | 8.32 |
| 5 | 217.57 | 214.05 | 201.59 | 1.64 | 7.93 |
| Combined | 216.14 | 212.40 | 200.80 | 1.76 | 7.64 |



IV. Wholesale Price Index

The Wholesale Price Index for July 2014 is increased by 0.54% over June 2014. It is increased by 6.55% over the corresponding month of the last year. YoY and MoM movements, from June 2013 to July 2014 are also graphed below in Figure 4.

| Table 4 : Wholesale Price Index by Group of Commodities (Base 2007-08) | | | | | | | | | |
|--|--|------------------|---------------|---------------|---------------|------------------------|-------------|---------------------------------------|-------------|
| No. | Group | Group Weight (%) | Indices | | | % Change Jul 2014 over | | Impact (in %age points) Jul 2014 over | |
| | | | Jul 2014 | Jun 2014 | Jul 2013 | Jun 2014 | Jul 2013 | Jun 2014 | Jul 2013 |
| | General | 100.00 | 215.76 | 214.60 | 202.49 | 0.54 | 6.55 | 0.54 | 6.55 |
| 1. | Agriculture, Forestry & Fishery Products | 25.77 | 230.64 | 228.53 | 214.77 | 0.92 | 7.39 | 0.25 | 2.02 |
| 2. | Ores & Minerals, Electricity, Gas & Water | 12.04 | 242.67 | 242.45 | 215.17 | 0.09 | 12.78 | 0.01 | 1.63 |
| 3. | Food Products, Beverages & Tobacco, Textiles, Apparel & Leather Products | 31.11 | 205.50 | 204.31 | 195.21 | 0.58 | 5.27 | 0.17 | 1.58 |
| | i. Food Products, Bev. & Tobacco | 20.07 | 210.83 | 209.08 | 198.23 | 0.84 | 6.36 | 0.16 | 1.25 |
| | ii. Textiles and Apparel | 10.33 | 194.63 | 193.75 | 191.81 | 0.45 | 1.47 | 0.04 | 0.14 |
| | iii. Leather Products | 0.71 | 213.10 | 222.97 | 159.51 | -4.41 | 33.60 | -0.03 | 0.19 |
| 4. | Other Transportable Goods except Metal Products, Machinery & Equipment | 22.37 | 215.63 | 214.75 | 206.44 | 0.41 | 4.45 | 0.09 | 1.01 |
| 5. | Metal Products, Machinery & Equipment | 8.72 | 171.57 | 171.26 | 164.46 | 0.18 | 4.32 | 0.01 | 0.31 |

Main contributors to month-on-month and year-on-year percentage changes are given below and detail is given in Annexure B.

1. **Month-on-month** Top few commodities which varied from previous month i.e. June, 2014 are given below:-

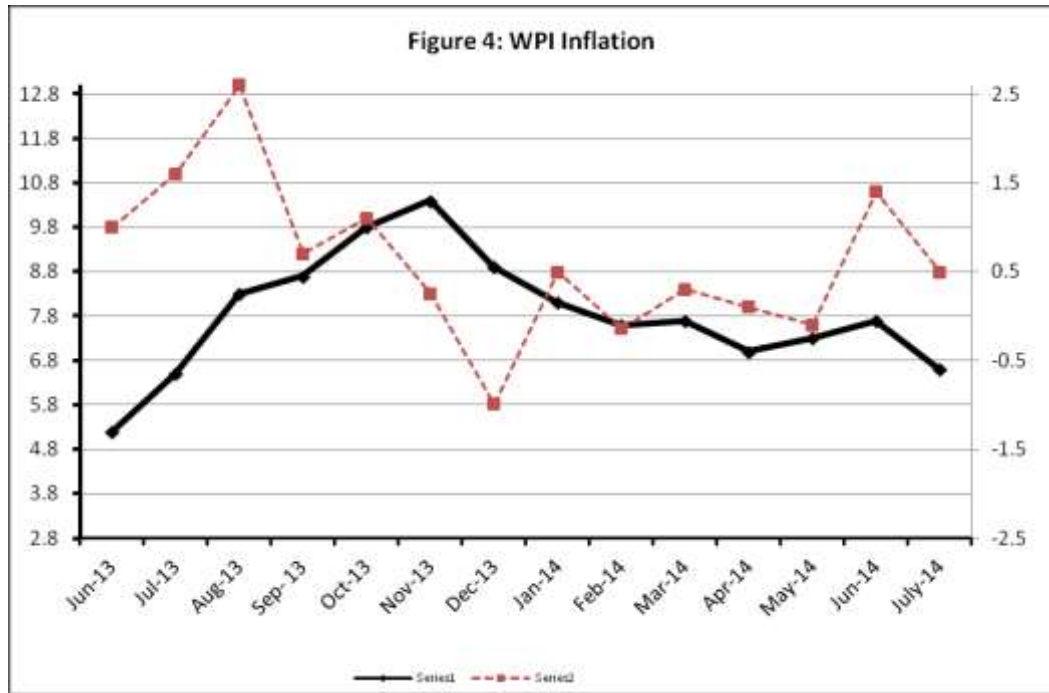
Increased: Vegetables (20.69%), Woolen Carpet (16.23%), Potatoes (14.92%), Fresh Fruits (13.21%), Oil Cakes (6.81%), Eggs (5.48%), Cotton Seeds (5.28%), Raw Animal Material/Wool (4.88%), Other Oil Seeds (4.44%), Unmanufactured Tobacco (4.42%), Sugar (3.77%), Readymade Garments (3.60%), Pesticides (3.38%), Ice-cream (2.66%) and Chemicals (2.13%).

Decreased: Fibre Crops (8.37%) and Stimulants & Spice Crops (2.61%).

2. **Year-on-year** Top few commodities which varied from previous year i.e. July, 2013 are given below:-

Increased: Potatoes (187.87%), Stimulants and Spice Crops (98.60%), Leather without hair (68.67%), Insecticides (46.18%), Lathe Machine (41.39%), Cotton Seeds (40.16%), Dyeing Material (34.08%), Tractors (32.46%) and Oil Cakes (32.13%).

Decreased: Coffee & Tea (19.65%), Nylon Yarn (14.41%) and Bajra (10.01%).



Annexure A: Consumer Price Index Numbers by Commodity Groups & Commodities (2007-2008=100)

| Item and Specification | Weight | Index Numbers | | | % Change in Jul 2014 over | | | |
|--|-----------------|---------------|---------------|---------------|---------------------------|-------------|----------|--------------|
| | | Jul 14 | Jun 14 | Jul 13 | Jun 2014 | Jul 2013 | | |
| General | 100.0000 | 198.05 | 194.74 | 183.58 | + | 1.70 | + | 7.88 |
| Food & Non-alcoholic Beverage | 34.8343 | 220.48 | 214.50 | 207.61 | + | 2.79 | + | 6.20 |
| 01 Wheat | 0.3477 | 203.12 | 200.35 | 194.81 | + | 1.38 | + | 4.27 |
| 02 Wheat Flour | 4.1648 | 214.47 | 213.46 | 204.57 | + | 0.47 | + | 4.84 |
| 03 Wheat Product | 0.0959 | 216.16 | 215.08 | 191.61 | + | 0.50 | + | 12.81 |
| 04 Besan | 0.1500 | 171.35 | 174.07 | 180.85 | - | 1.56 | - | 5.25 |
| 05 Rice | 1.5821 | 194.78 | 194.10 | 189.10 | + | 0.35 | + | 3.00 |
| 06 Cereals | 0.1563 | 237.23 | 235.80 | 219.23 | + | 0.61 | + | 8.21 |
| 07 Bakery & Confectionary | 1.1550 | 204.30 | 203.91 | 183.59 | + | 0.19 | + | 11.28 |
| 08 Nimco | 0.4574 | 232.48 | 230.82 | 208.18 | + | 0.72 | + | 11.67 |
| 09 Meat | 2.4303 | 238.64 | 237.75 | 225.18 | + | 0.37 | + | 5.98 |
| 10 Chicken | 1.3596 | 199.78 | 199.93 | 203.56 | - | 0.08 | - | 1.86 |
| 11 Fish | 0.2970 | 221.80 | 222.36 | 200.39 | - | 0.25 | + | 10.68 |
| 12 Milk Fresh | 6.6800 | 244.00 | 242.98 | 226.78 | + | 0.42 | + | 7.59 |
| 13 Milk Products | 0.6338 | 240.15 | 238.58 | 219.34 | + | 0.66 | + | 9.49 |
| 14 Milk Powder | 0.1129 | 223.66 | 221.55 | 192.03 | + | 0.95 | + | 16.47 |
| 15 Eggs | 0.4555 | 177.27 | 167.66 | 167.03 | + | 5.73 | + | 6.13 |
| 16 Mustard Oil | 0.0952 | 158.40 | 158.12 | 158.64 | + | 0.18 | - | 0.15 |
| 17 Cooking Oil | 1.7538 | 161.87 | 161.96 | 161.62 | - | 0.06 | + | 0.15 |
| 18 Vegetable Ghee | 2.0714 | 157.83 | 158.34 | 155.82 | - | 0.32 | + | 1.29 |
| 19 Dry Fruits | 0.2543 | 237.98 | 234.85 | 217.86 | + | 1.33 | + | 9.24 |
| 20 Fresh Fruits | 1.8649 | 273.57 | 237.43 | 234.05 | + | 15.22 | + | 16.89 |
| 21 Pulse Masoor | 0.2712 | 180.20 | 180.68 | 157.42 | - | 0.27 | + | 14.47 |
| 22 Pulse Moong | 0.2336 | 301.58 | 301.11 | 237.14 | + | 0.16 | + | 27.17 |
| 23 Pulse Mash (Washed) | 0.2098 | 208.89 | 209.35 | 187.00 | - | 0.22 | + | 11.71 |
| 24 Pulse Gram | 0.2361 | 166.99 | 168.96 | 179.42 | - | 1.17 | - | 6.93 |
| 25 Gram Whole | 0.1616 | 179.25 | 179.88 | 187.26 | - | 0.35 | - | 4.28 |
| 26 Beans | 0.0269 | 240.10 | 240.36 | 228.13 | - | 0.11 | + | 5.25 |
| 27 Potatoes | 0.4699 | 469.93 | 403.63 | 211.16 | + | 16.43 | + | 122.55 |
| 28 Onion | 0.5340 | 230.52 | 195.07 | 249.51 | + | 18.17 | - | 7.61 |
| 29 Tomatoes | 0.4419 | 167.23 | 116.37 | 322.23 | + | 43.71 | - | 48.10 |
| 30 Fresh Vegetables | 1.6802 | 224.72 | 202.52 | 211.21 | + | 10.96 | + | 6.40 |
| 31 Sugar | 1.0445 | 201.28 | 195.32 | 195.93 | + | 3.05 | + | 2.73 |
| 32 Gur | 0.0220 | 257.03 | 253.67 | 261.46 | + | 1.32 | - | 1.69 |
| 33 Honey | 0.0446 | 288.66 | 284.59 | 256.65 | + | 1.43 | + | 12.47 |
| 34 SweetMeat | 0.2483 | 227.84 | 226.62 | 211.81 | + | 0.54 | + | 7.57 |
| 35 Beverages | 1.1990 | 208.53 | 205.75 | 186.90 | + | 1.35 | + | 11.57 |
| 36 Jam, Tomato Ketchup & Pickles | 0.2454 | 196.07 | 194.91 | 187.26 | + | 0.60 | + | 4.70 |
| 37 Condiments | 0.2656 | 247.60 | 246.44 | 217.51 | + | 0.47 | + | 13.83 |
| 38 Spices | 0.5441 | 228.43 | 227.28 | 216.85 | + | 0.51 | + | 5.34 |
| 39 Tea | 0.8377 | 207.09 | 207.74 | 252.69 | - | 0.31 | - | 18.05 |
| Alcoholic Beverages, Tobacco | 1.4135 | 265.82 | 259.28 | 217.46 | + | 2.52 | + | 22.24 |
| 40 Cigarettes | 1.3906 | 266.88 | 260.26 | 217.93 | + | 2.54 | + | 22.46 |
| 41 Betel Leaves & Nuts | 0.0229 | 202.02 | 199.83 | 188.57 | + | 1.10 | + | 7.13 |
| Clothing & Footwear | 7.5708 | 209.51 | 206.96 | 190.42 | + | 1.23 | + | 10.03 |
| 42 Cotton Cloth | 1.7286 | 206.19 | 201.94 | 177.82 | + | 2.10 | + | 15.95 |
| 43 Woolen Cloth | 0.8759 | 228.36 | 227.29 | 206.87 | + | 0.47 | + | 10.39 |
| 44 Readymade Garments | 0.9739 | 210.19 | 206.29 | 185.06 | + | 1.89 | + | 13.58 |
| 45 Woolen Readymade Garments | 0.3964 | 218.34 | 218.34 | 192.45 | + | 0.00 | + | 13.45 |
| 46 Hosiery | 0.5094 | 220.45 | 219.18 | 195.40 | + | 0.58 | + | 12.82 |
| 47 Dopatta | 0.4412 | 225.70 | 225.05 | 205.47 | + | 0.29 | + | 9.85 |
| 48 Cleaning and Laundry | 0.2110 | 229.21 | 228.30 | 208.19 | + | 0.40 | + | 10.10 |
| 49 Tailoring | 0.8840 | 253.71 | 247.32 | 226.68 | + | 2.58 | + | 11.92 |
| 50 Footwear | 1.5504 | 163.78 | 163.50 | 168.99 | + | 0.17 | - | 3.08 |

Annexure A: Consumer Price Index Numbers by Commodity Groups & Commodities (2007-2008=100)

| Item and Specification | Weight | Index Numbers | | | % Change in Jul 2014 over | | | |
|--|---------|---------------|--------|--------|---------------------------|----------|---|-------|
| | | Jul 14 | Jun 14 | Jul 13 | Jun 2014 | Jul 2013 | | |
| Housing, Water, Elec., Gas, Other | 29.4149 | 171.62 | 169.53 | 157.54 | + | 1.23 | + | 8.94 |
| 51 House Rent | 21.8149 | 159.82 | 157.05 | 148.24 | + | 1.76 | + | 7.81 |
| 52 Construction Input Items | 0.5623 | 234.10 | 232.72 | 214.61 | + | 0.59 | + | 9.08 |
| 53 Construction Wage Rates | 0.3331 | 200.14 | 199.53 | 185.33 | + | 0.31 | + | 7.99 |
| 54 Water Supply | 0.4971 | 149.92 | 149.92 | 141.36 | + | 0.00 | + | 6.06 |
| 55 Electricity | 4.3985 | 227.44 | 227.44 | 196.37 | + | 0.00 | + | 15.82 |
| 56 Gas | 1.5756 | 143.81 | 143.81 | 143.81 | + | 0.00 | + | 0.00 |
| 57 Kerosene Oil | 0.0057 | 278.37 | 278.77 | 274.98 | - | 0.14 | + | 1.23 |
| 58 Firewood Whole | 0.2277 | 264.49 | 265.16 | 244.09 | - | 0.25 | + | 8.36 |
| Furnished H. Hold Equip. & Hous | 4.2082 | 204.42 | 204.09 | 187.23 | + | 0.16 | + | 9.18 |
| 59 Furniture | 0.3315 | 195.17 | 194.71 | 177.21 | + | 0.24 | + | 10.13 |
| 60 Household Textiles | 0.6489 | 199.95 | 199.85 | 182.53 | + | 0.05 | + | 9.54 |
| 61 Household Equipment | 0.5936 | 170.88 | 170.58 | 162.88 | + | 0.18 | + | 4.91 |
| 62 Utensils | 0.3212 | 206.30 | 205.72 | 185.91 | + | 0.28 | + | 10.97 |
| 63 Plastic Products | 0.2547 | 195.95 | 195.76 | 183.11 | + | 0.10 | + | 7.01 |
| 64 Washing Soaps & Detergents | 0.7893 | 221.06 | 220.60 | 204.48 | + | 0.21 | + | 8.11 |
| 65 Sewing Needle & Dr Cell | 0.1496 | 182.15 | 180.69 | 166.67 | + | 0.81 | + | 9.29 |
| 66 Household Servant | 1.0432 | 219.87 | 219.71 | 197.48 | + | 0.07 | + | 11.34 |
| 67 Marriage Hall Charges | 0.0762 | 224.45 | 224.03 | 201.35 | + | 0.19 | + | 11.47 |
| Health | 2.1868 | 173.40 | 172.79 | 161.45 | + | 0.35 | + | 7.40 |
| 68 Drugs & Medicines | 1.2667 | 145.59 | 145.57 | 141.18 | + | 0.01 | + | 3.12 |
| 69 Medical Equipments | 0.0080 | 220.36 | 219.76 | 205.49 | + | 0.27 | + | 7.24 |
| 70 Doctor (MBBS) Clinic Fee | 0.5904 | 234.15 | 232.41 | 204.66 | + | 0.75 | + | 14.41 |
| 71 Medical Tests | 0.3217 | 170.28 | 169.35 | 160.87 | + | 0.55 | + | 5.85 |
| Transport | 7.2023 | 198.38 | 195.27 | 188.83 | + | 1.59 | + | 5.06 |
| 72 Motor Vehicles | 0.6630 | 160.37 | 160.00 | 158.19 | + | 0.23 | + | 1.38 |
| 73 Motor Vehicle Accessories | 0.2439 | 228.75 | 228.31 | 217.18 | + | 0.19 | + | 5.33 |
| 74 Motor Fuel | 3.0269 | 190.45 | 186.72 | 181.80 | + | 2.00 | + | 4.76 |
| 75 Mechanical Service | 0.4552 | 206.25 | 206.25 | 190.80 | + | 0.00 | + | 8.10 |
| 76 Motor Vehicle Tax | 0.1099 | 210.18 | 153.74 | 153.74 | + | 36.71 | + | 36.71 |
| 77 Transport Services | 2.7034 | 212.03 | 210.36 | 202.74 | + | 0.79 | + | 4.58 |
| Communication | 3.2198 | 129.85 | 129.88 | 129.62 | - | 0.02 | + | 0.18 |
| 78 Postal Services | 0.0662 | 215.95 | 215.89 | 215.89 | + | 0.03 | + | 0.03 |
| 79 Communication & Apparatus | 3.1536 | 128.05 | 128.07 | 127.81 | - | 0.02 | + | 0.19 |
| Recreation & Culture | 2.0227 | 188.76 | 188.74 | 178.48 | + | 0.01 | + | 5.76 |
| 80 Recreation & Culture | 0.8634 | 127.43 | 127.44 | 123.55 | - | 0.01 | + | 3.14 |
| 81 Text Books | 0.5706 | 279.73 | 279.73 | 260.03 | + | 0.00 | + | 7.58 |
| 82 Newspapers | 0.1934 | 175.42 | 175.42 | 170.49 | + | 0.00 | + | 2.89 |
| 83 Stationery | 0.3953 | 197.92 | 197.77 | 184.67 | + | 0.08 | + | 7.17 |
| Education | 3.9431 | 191.33 | 190.90 | 164.25 | + | 0.23 | + | 16.49 |
| 84 Education | 3.9431 | 191.33 | 190.90 | 164.25 | + | 0.23 | + | 16.49 |
| Restaurants & Hotels | 1.2286 | 239.23 | 238.76 | 213.87 | + | 0.20 | + | 11.86 |
| 85 Readymade Food | 1.2286 | 239.23 | 238.76 | 213.87 | + | 0.20 | + | 11.86 |
| Miscellaneous Goods & Service | 2.7550 | 216.98 | 215.12 | 200.91 | + | 0.86 | + | 8.00 |
| 86 Personal Care | 1.4935 | 200.54 | 199.48 | 185.88 | + | 0.53 | + | 7.89 |
| 87 Cosmetics | 0.3853 | 183.13 | 182.74 | 166.59 | + | 0.21 | + | 9.93 |
| 88 Blades | 0.0322 | 184.82 | 184.61 | 177.70 | + | 0.11 | + | 4.01 |
| 89 Personal Equipments | 0.8440 | 262.76 | 258.73 | 244.06 | + | 1.56 | + | 7.66 |

Annexure B: Wholesale Price Indices by Major Groups & Commodities (2007-2008=100)

| Item and Specification | Weight | Index Numbers | | | % Change in Jul 2014 over | |
|--|----------|---------------|--------|--------|---------------------------|----------|
| | | Jul 14 | Jun 14 | Jul 13 | Jun 2014 | Jul 2013 |
| General | 100.0000 | 215.76 | 214.60 | 202.49 | + 0.54 | + 6.55 |
| Agriculture Forestry & Fisher | 25.7674 | 230.64 | 228.53 | 214.77 | + 0.92 | + 7.39 |
| 001 Wheat | 0.6297 | 207.97 | 205.99 | 206.16 | + 0.96 | + 0.88 |
| 002 Maize | 0.6764 | 191.76 | 189.74 | 193.96 | + 1.06 | - 1.13 |
| 003 Rice | 2.4413 | 179.66 | 180.08 | 177.08 | - 0.23 | + 1.46 |
| 004 Sorghum / Jowar | 0.0214 | 323.08 | 316.79 | 270.15 | + 1.99 | + 19.59 |
| 005 Millet / Bajra | 0.0374 | 174.47 | 173.02 | 193.87 | + 0.84 | - 10.01 |
| 006 Vegetables | 1.2441 | 247.48 | 205.05 | 273.46 | + 20.69 | - 9.50 |
| 007 Fresh Fruits | 1.5144 | 321.25 | 283.76 | 253.15 | + 13.21 | + 26.90 |
| 008 Dry Fruits | 0.2478 | 217.95 | 219.20 | 192.88 | - 0.57 | + 13.00 |
| 009 Cotton Seeds | 1.1511 | 231.50 | 219.90 | 165.17 | + 5.28 | + 40.16 |
| 010 Other Oil Seeds | 0.0722 | 190.46 | 182.36 | 169.50 | + 4.44 | + 12.37 |
| 011 Edible Roots / Potatoes | 0.2540 | 543.47 | 472.92 | 188.79 | + 14.92 | + 187.87 |
| 012 Stimulant & Spice Crops | 0.1634 | 460.25 | 472.58 | 231.75 | - 2.61 | + 98.60 |
| 013 Pulses | 0.4901 | 198.96 | 200.37 | 184.78 | - 0.70 | + 7.67 |
| 014 Sugar Crops | 1.0725 | 267.92 | 267.92 | 267.92 | + 0.00 | + 0.00 |
| 015 Fibre Crops | 5.3169 | 201.65 | 220.08 | 210.28 | - 8.37 | - 4.10 |
| 016 Unmanufactured Tobacco | 0.0742 | 204.74 | 196.08 | 176.34 | + 4.42 | + 16.11 |
| 017 Poultry | 0.5633 | 206.33 | 207.92 | 215.62 | - 0.76 | - 4.31 |
| 018 Raw Milk from Bovine Animals | 7.0279 | 242.57 | 240.49 | 220.27 | + 0.86 | + 10.12 |
| 019 Eggs | 0.5034 | 176.03 | 166.88 | 167.37 | + 5.48 | + 5.17 |
| 020 Raw Animal Materials / Wool | 0.0351 | 164.70 | 157.03 | 151.73 | + 4.88 | + 8.55 |
| 021 Hides & Fur Skins, Raw | 0.4834 | 146.12 | 145.85 | 140.52 | + 0.19 | + 3.99 |
| 022 Fuel Wood in Logs | 0.0179 | 243.47 | 243.47 | 230.69 | + 0.00 | + 5.54 |
| 023 Fish Live Fresh or Chilled | 1.7295 | 246.21 | 250.37 | 247.49 | - 1.66 | - 0.52 |
| Ores/Minerals, Elec., Gas & W | 12.0389 | 242.67 | 242.45 | 215.17 | + 0.09 | + 12.78 |
| 024 Coal not Agglomerated | 0.7508 | 223.53 | 223.53 | 223.53 | + 0.00 | + 0.00 |
| 025 Natural Gas Liquified | 5.7385 | 202.34 | 201.86 | 203.74 | + 0.24 | - 0.69 |
| 026 Salt & Pure Sodium Chloride | 0.0584 | 243.18 | 243.18 | 204.73 | + 0.00 | + 18.78 |
| 027 Electrical Energy | 5.4912 | 287.44 | 287.44 | 226.10 | + 0.00 | + 27.13 |
| Food, Beverages, Tobacco, Textil | 31.1122 | 205.50 | 204.31 | 195.21 | + 0.58 | + 5.27 |
| Food Products, Beverages & | 20.0718 | 210.83 | 209.08 | 198.23 | + 0.84 | + 6.36 |
| 028 Meat of Animals | 3.4559 | 246.01 | 243.10 | 232.94 | + 1.20 | + 5.61 |
| 029 Vegetables & Fruit Juice | 0.0058 | 194.12 | 194.02 | 190.74 | + 0.05 | + 1.77 |
| 030 Dried Fruits & Nuts | 0.1733 | 217.80 | 217.80 | 222.76 | + 0.00 | - 2.23 |
| 031 Fruit Juices | 0.3880 | 171.20 | 170.89 | 164.49 | + 0.18 | + 4.08 |
| 032 Vegetable Oils Refined | 1.9242 | 164.33 | 165.47 | 160.21 | - 0.69 | + 2.57 |
| 033 Vegetable Ghee | 1.5632 | 140.35 | 140.01 | 141.00 | + 0.24 | - 0.46 |
| 034 Oil Cakes | 0.9611 | 232.05 | 217.25 | 175.62 | + 6.81 | + 32.13 |
| 035 Processed Liquid Milk | 4.4437 | 223.02 | 223.02 | 205.54 | + 0.00 | + 8.50 |
| 036 Milk & Cream in Solid Form | 0.0316 | 212.82 | 211.32 | 178.39 | + 0.71 | + 19.30 |
| 037 Ice Cream | 0.0047 | 219.91 | 214.21 | 204.00 | + 2.66 | + 7.80 |
| 038 Dairy Products N.E.C | 0.0117 | 235.94 | 235.64 | 216.21 | + 0.13 | + 9.13 |
| 039 Wheat Flour | 2.3034 | 195.47 | 196.01 | 190.04 | - 0.28 | + 2.86 |
| 040 Other Cereal Flour | 0.0604 | 138.16 | 139.38 | 150.06 | - 0.88 | - 7.93 |
| 041 Sugar Refined | 1.7975 | 216.56 | 208.70 | 212.01 | + 3.77 | + 2.15 |
| 042 Chocolate | 0.0139 | 99.19 | 99.19 | 99.19 | + 0.00 | + 0.00 |
| 043 Sugar Confectionary | 0.0738 | 102.28 | 102.28 | 102.28 | + 0.00 | + 0.00 |
| 044 Coffee & Tea | 0.7303 | 184.43 | 185.89 | 229.54 | - 0.79 | - 19.65 |
| 045 Spices | 0.1449 | 191.70 | 191.67 | 197.26 | + 0.02 | - 2.82 |
| 046 Other Food Products | 0.0336 | 293.72 | 293.72 | 316.68 | + 0.00 | - 7.25 |
| 047 Mineral Water | 0.0207 | 185.63 | 185.23 | 177.53 | + 0.22 | + 4.56 |
| 048 Beverages | 0.6303 | 167.46 | 166.38 | 139.35 | + 0.65 | + 20.17 |
| 049 Tobacco Products | 1.2998 | 290.52 | 290.52 | 242.41 | + 0.00 | + 19.85 |
| Textiles & Apparels | 10.3289 | 194.63 | 193.75 | 191.81 | + 0.45 | + 1.47 |
| 050 Cotton Yarn | 5.2491 | 200.42 | 200.42 | 210.89 | + 0.00 | - 4.96 |
| 051 Nylon Yarn | 0.1719 | 161.40 | 162.34 | 188.58 | - 0.58 | - 14.41 |
| 052 Blended Yarn | 0.1689 | 193.60 | 192.59 | 197.47 | + 0.52 | - 1.96 |
| 053 Woven Fabrics | 0.0128 | 226.82 | 226.82 | 208.98 | + 0.00 | + 8.54 |
| 054 Cotton Fabrics | 0.6343 | 196.81 | 196.81 | 183.43 | + 0.00 | + 7.29 |
| 055 Other Fabrics | 1.1016 | 197.56 | 197.56 | 175.06 | + 0.00 | + 12.85 |

Annexure B: Wholesale Price Indices by Major Groups & Commodities (2007-2008=100)

| Item and Specification | Weight | Index Numbers | | | % Change in Jul 2014 over | |
|--|---------|---------------|--------|--------|---------------------------|----------|
| | | Jul 14 | Jun 14 | Jul 13 | Jun 2014 | Jul 2013 |
| 056 Silk & Reyon Fabrics | 0.7350 | 165.85 | 165.85 | 159.34 | + 0.00 | + 4.09 |
| 057 Towels | 0.1235 | 242.19 | 242.19 | 213.19 | + 0.00 | + 13.60 |
| 058 Blankets | 0.0029 | 219.66 | 219.66 | 185.21 | + 0.00 | + 18.60 |
| 059 Bed Sheets | 0.0913 | 242.12 | 242.12 | 213.18 | + 0.00 | + 13.58 |
| 060 Quilts | 0.0019 | 172.42 | 172.42 | 156.32 | + 0.00 | + 10.30 |
| 061 Woolen Carpets | 0.0383 | 132.14 | 113.69 | 106.55 | + 16.23 | + 24.02 |
| 062 Synthetic Carpets | 0.0566 | 116.10 | 116.10 | 114.41 | + 0.00 | + 1.48 |
| 063 Hosiery Products | 0.8832 | 204.27 | 202.13 | 185.30 | + 1.06 | + 10.24 |
| 064 Readymade Garments | 1.0576 | 175.43 | 169.33 | 150.00 | + 3.60 | + 16.95 |
| Leather Products | 0.7115 | 213.10 | 222.94 | 159.51 | - 4.41 | + 33.60 |
| 065 Leather Without Hair | 0.2973 | 223.51 | 223.51 | 132.51 | + 0.00 | + 68.67 |
| 066 Other Leather N.E.C | 0.2567 | 249.44 | 276.72 | 203.07 | - 9.86 | + 22.83 |
| 067 Footwears | 0.1575 | 134.22 | 134.22 | 139.49 | + 0.00 | - 3.78 |
| Other Transportable Goods | 22.3659 | 215.63 | 214.75 | 206.44 | + 0.41 | + 4.45 |
| 068 Timber | 0.0165 | 184.69 | 182.14 | 157.52 | + 1.40 | + 17.25 |
| 069 Printing Paper | 0.4279 | 172.62 | 172.62 | 164.45 | + 0.00 | + 4.97 |
| 070 Hard Board | 0.1579 | 229.17 | 229.17 | 200.00 | + 0.00 | + 14.59 |
| 071 Coke | 0.2797 | 163.45 | 163.45 | 163.45 | + 0.00 | + 0.00 |
| 072 Motor Spirit | 1.5336 | 182.40 | 182.40 | 171.92 | + 0.00 | + 6.10 |
| 073 Diesel Oil | 5.2664 | 260.69 | 260.69 | 254.92 | + 0.00 | + 2.26 |
| 074 Kerosine Oil | 0.2151 | 288.01 | 288.01 | 256.74 | + 0.00 | + 12.18 |
| 075 Furnace Oil | 3.2664 | 173.10 | 172.01 | 171.62 | + 0.63 | + 0.86 |
| 076 Mobil Oil | 0.7114 | 201.17 | 200.28 | 191.04 | + 0.44 | + 5.30 |
| 077 Chemicals | 1.7720 | 193.10 | 189.08 | 163.56 | + 2.13 | + 18.06 |
| 078 Dyeing Material | 0.1539 | 143.77 | 143.77 | 107.23 | + 0.00 | + 34.08 |
| 079 Fertilizers | 2.8657 | 268.66 | 267.48 | 268.23 | + 0.44 | + 0.16 |
| 080 Pesticides | 0.2763 | 262.86 | 254.27 | 208.72 | + 3.38 | + 25.94 |
| 081 Insecticides | 0.1276 | 181.89 | 181.89 | 124.43 | + 0.00 | + 46.18 |
| 082 Paints & Varnishes | 0.1916 | 275.71 | 275.71 | 247.56 | + 0.00 | + 11.37 |
| 083 Medicines | 1.1428 | 144.21 | 142.22 | 138.83 | + 1.40 | + 3.88 |
| 084 Soaps & Detergents | 0.8168 | 183.11 | 183.11 | 176.55 | + 0.00 | + 3.72 |
| 085 Auto Tyres | 0.2703 | 188.21 | 188.21 | 185.57 | + 0.00 | + 1.42 |
| 086 Plastic Products | 0.4550 | 203.08 | 203.08 | 198.15 | + 0.00 | + 2.49 |
| 087 Glass sheets | 0.2089 | 209.86 | 209.86 | 203.49 | + 0.00 | + 3.13 |
| 088 Other Glass Articles | 0.1635 | 218.27 | 218.27 | 206.09 | + 0.00 | + 5.91 |
| 089 Ceramics & Sanitary Fixture | 0.0244 | 200.07 | 201.75 | 164.06 | - 0.83 | + 21.95 |
| 090 Bricks, Blocks & Tiles | 0.1566 | 201.73 | 200.57 | 184.78 | + 0.58 | + 9.17 |
| 091 Cement | 1.8145 | 207.76 | 207.76 | 194.83 | + 0.00 | + 6.64 |
| 092 Bed Foam | 0.0006 | 150.83 | 150.83 | 144.33 | + 0.00 | + 4.50 |
| 093 Matches | 0.0505 | 143.20 | 143.20 | 143.20 | + 0.00 | + 0.00 |
| Metal Product, Machinery & Eq | 8.7156 | 171.57 | 171.26 | 164.46 | + 0.18 | + 4.32 |
| 094 Pig Iron | 0.0593 | 128.97 | 128.97 | 128.97 | + 0.00 | + 0.00 |
| 095 Steel Bar & Sheets | 1.4022 | 146.08 | 144.30 | 138.21 | + 1.23 | + 5.69 |
| 096 Pipe Fittings | 0.0780 | 175.34 | 175.34 | 149.13 | + 0.00 | + 17.58 |
| 097 Steel Products | 0.3879 | 170.24 | 170.24 | 167.61 | + 0.00 | + 1.57 |
| 098 Engines & Motors | 0.0046 | 109.07 | 109.07 | 109.07 | + 0.00 | + 0.00 |
| 099 Vacuum Pumps | 0.0155 | 115.39 | 115.39 | 115.39 | + 0.00 | + 0.00 |
| 100 Air Conditioners | 0.0049 | 181.12 | 181.12 | 179.78 | + 0.00 | + 0.75 |
| 101 Cultivators | 0.0551 | 226.90 | 226.90 | 189.23 | + 0.00 | + 19.91 |
| 102 Chuff Cutter | 0.1293 | 149.20 | 149.20 | 144.94 | + 0.00 | + 2.94 |
| 103 Tractors | 0.0028 | 214.54 | 214.54 | 161.96 | + 0.00 | + 32.46 |
| 104 Lathe Machines | 0.0525 | 208.81 | 208.81 | 147.68 | + 0.00 | + 41.39 |
| 105 Concrete Mixture | 0.0107 | 138.83 | 138.83 | 138.83 | + 0.00 | + 0.00 |
| 106 Fridge,WashM,SewM,Fans,Iron | 1.1645 | 195.93 | 195.75 | 179.92 | + 0.09 | + 8.90 |
| 107 Electric Wires | 0.0912 | 179.18 | 179.18 | 167.53 | + 0.00 | + 6.95 |
| 108 Lighting Equipments | 1.4431 | 164.95 | 164.95 | 159.47 | + 0.00 | + 3.44 |
| 109 Radio & Television | 0.1843 | 126.49 | 126.49 | 126.49 | + 0.00 | + 0.00 |
| 110 Motor Vehicles | 0.0244 | 182.59 | 182.59 | 173.99 | + 0.00 | + 4.94 |
| 111 Motorcycles | 0.2570 | 126.70 | 126.70 | 124.80 | + 0.00 | + 1.52 |
| 112 Bicycles | 3.3483 | 182.84 | 182.84 | 178.81 | + 0.00 | + 2.25 |