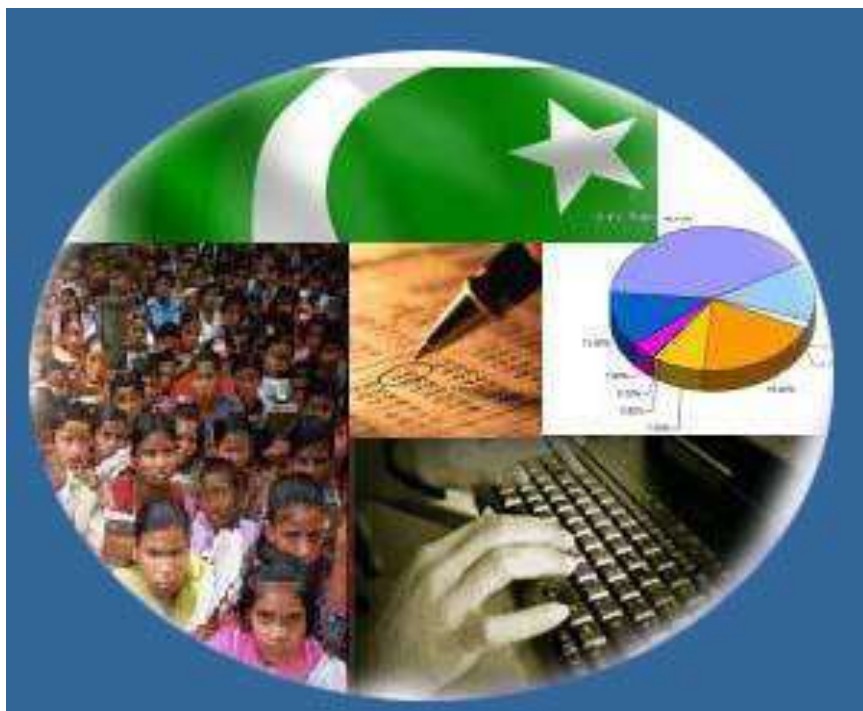




Monthly Review on Price Indices



September, 2014
(Base 2007-08)

Government of Pakistan
Statistics Division
Pakistan Bureau of Statistics
Islamabad

I. Inflation in Brief

1. CPI inflation, General, increased by 7.7% on year-on-year basis in September 2014 as compared to 7.0% in the previous month and by 7.4% in September 2013. On month-on-month basis, it increased by 0.4% in September 2014 as compared to 0.3% in the previous month and decreased by 0.3% in September 2013.
2. Core inflation measured by non-food non-energy CPI (Core NFNE) increased by 8.1% on (YoY) basis in September 2014 as compared to 7.9% in the previous month and by 8.6% in September 2013. On (MoM) basis, it increased by 0.7% in September 2014 as compared to 0.2% in the previous month and by 0.5% in September 2013.
3. Core inflation, measured by 20% weighted trimmed mean CPI (Core Trimmed) increased by 7.1% on (YoY) basis in September 2014 as compared to 7.1% in the previous month and by 7.6% in September 2013. On (MoM) basis, it increased by 0.2% in September 2014 as compared to 0.2% in the previous month and by 0.6% in September 2013.
4. SPI inflation on YoY basis increased by 5.4% in September 2014 as compared to 5.2% a month earlier and 8.8% in September 2013. On MoM basis, it increased by 0.2% in September 2014 as compared to 0.8% a month earlier and increased by 0.1% in September 2013.
5. WPI inflation on YoY basis increased by 2.7% in September 2014 as compared to 3.3% a month earlier and 8.7% in September 2013. WPI inflation on MoM basis increased by 0.2% in September 2014 as compared to a decrease of 0.5% a month earlier and increased by 0.7% in September 2013.
6. Figures 1 and 2 show graphically the data of Table 1. Table 1.1 shows "Period Average" and "YoY" percent changes in indices of three years.

Table 1: Inflation (%) (Base 2007-08)														
Period	CPI						Core Inflation				SPI**		WPI	
	General		Food		Non-food		NFNE*		Trimmed		YoY	MoM	YoY	MoM
	YoY	MoM	YoY	MoM	YoY	MoM	YoY	MoM	YoY	MoM				
Aug 13	8.5	1.2	10.3	2.0	7.3	0.6	8.5	0.6	7.9	0.6	10.1	1.5	8.3	2.6
Sep 13	7.4	-0.3	7.9	-1.5	7.0	0.6	8.6	0.5	7.6	0.6	8.8	0.1	8.7	0.7
Oct 13	9.1	2.0	9.8	1.7	8.6	2.2	8.4	0.9	9.0	0.8	10.5	1.2	9.8	1.1
Nov 13	10.9	1.3	13.0	2.6	9.4	0.3	8.5	0.3	9.2	0.4	14.1	3.2	10.4	0.2
Dec 13	9.2	-1.3	9.3	-3.3	9.1	0.2	8.2	0.2	8.7	0.4	11.1	-2.5	8.9	-1.0
Jan 14	7.9	0.5	7.2	0.0 ¹	8.4	0.9	8.0	1.0	8.2	0.6	7.7	-1.2	8.1	0.5
Feb 14	7.9	-0.3	7.6	-1.0	8.2	0.2	7.8	0.2	8.1	0.2	7.5	-0.1	7.6	-0.1
Mar 14	8.5	1.0	9.3	2.1	8.0	0.2	7.6	0.3	8.1	0.3	9.0	2.1	7.7	0.3
Apr 14	9.2	1.7	9.9	2.0	8.7	1.5	8.5	1.9	9.0	0.9	9.4	0.1	7.0	0.1
May 14	8.3	-0.3	7.4	-1.2	9.0	0.4	8.7	0.5	8.3	0.3	7.7	-1.5	7.3	-0.1
Jun14	8.2	0.6	7.4	1.0	8.9	0.3	8.7	0.4	7.9	0.3	6.2	1.1	7.7	1.4
Jul 14	7.9	1.7	7.0	2.7	8.5	1.0	8.3	1.1	7.6	0.8	5.9	2.0	6.6	0.5
Aug14	7.0	0.3	5.6	0.6	8.1	0.2	7.9	0.2	7.1	0.2	5.2	0.8	3.3	-0.5
Sep14	7.7	0.4	7.2	0.0	8.0	0.6	8.1	0.7	7.1	0.2	5.4	0.2	2.7	0.2

*NFNE is non-food non-energy,

** SPI for quintile 1

¹ Actual figure is -0.04, displayed in rounded figure

Table 1.1 : Period Average and YoY % Changes of Indices (Base 2007-08)						
Index	Averages July-September % Changes			September over September % Changes		
	2014-15	2013-14	2012-13	2014-15	2013-14	2012-13
CPI	7.52	8.06	9.14	7.68	7.39	8.79
SPI	5.48	9.55	7.95	5.37	8.81	8.02
WPI	4.17	7.82	7.59	2.74	8.65	7.82

Figure 1: CPI Inflation YoY, Special Indices

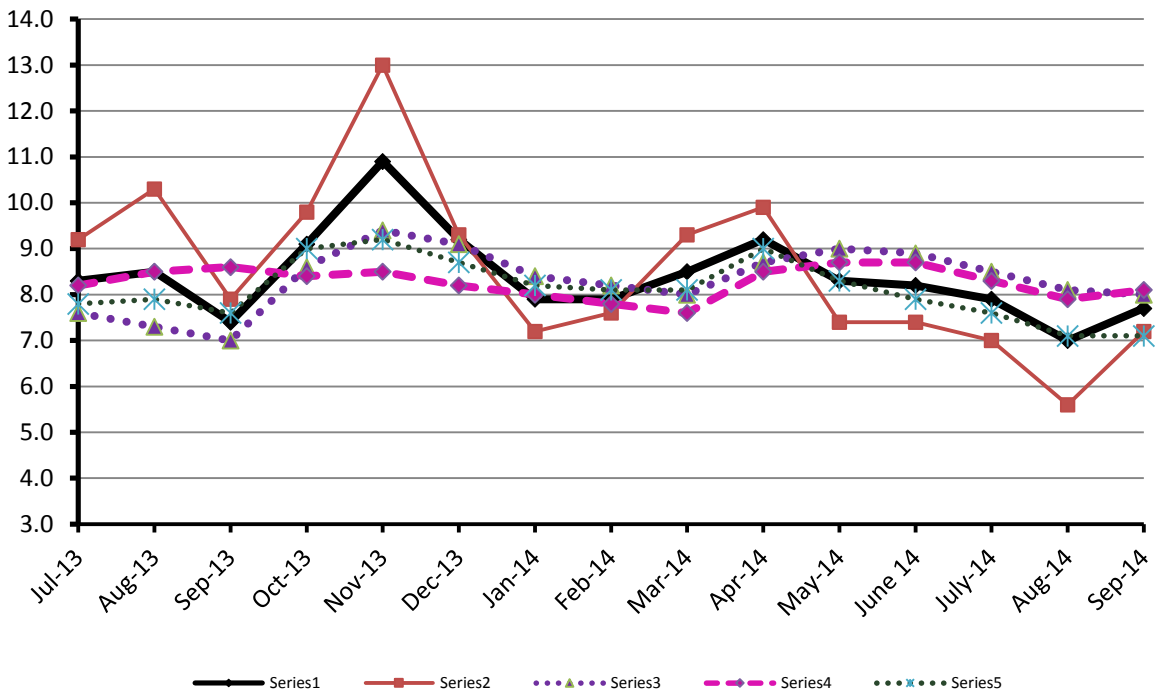
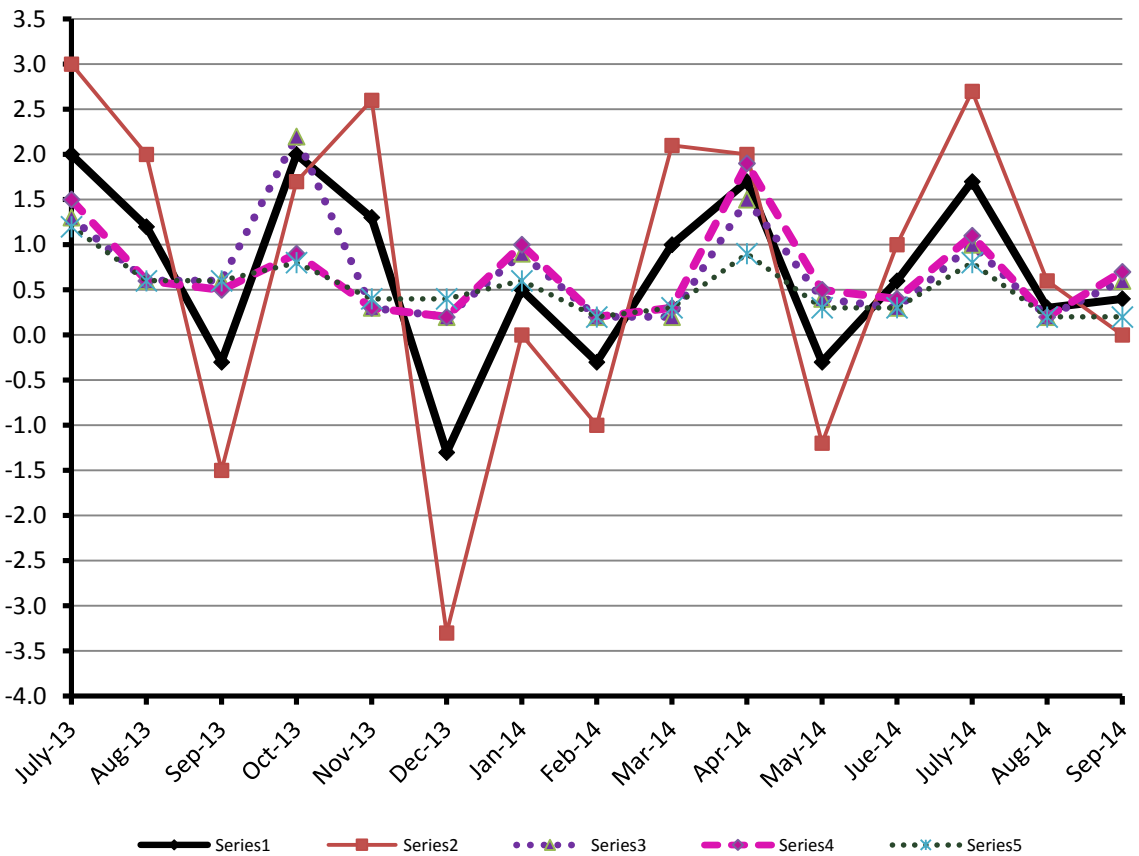


Figure 2: CPI Inflation MoM, Special Indices



II. Consumer Price Index (CPI)

The Consumer Price Index of September, 2014 has increased by 0.35% over August, 2014 and increased by 7.68% over corresponding month of the last year, i.e. September 2013.

Table 2 : Consumer Price Index by Group of Commodities and Services (Base 2007-08)

No	Group	Group Weight (%)	Indices			% Change Sep 2014 Over		Impact (In % points) Sep 2014 Over	
			Sep 2014	Aug 2014	Sep 2013	Aug 2014	Sep 2013	Aug 2014	Sep 2013
	General	100.00	199.40	198.70	185.18	0.35	7.68	0.35	7.68
1.	Food & Non-alcoholic Bev.	34.83	221.77	221.77	208.29	0.00	6.47	0.00	2.54
	<i>Non-perishable Food Items</i>	29.84	215.91	215.89	206.08	0.01	4.77	0.00	1.58
	<i>Perishable Food Items</i>	4.99	256.83	256.91	221.51	-0.03	15.95	0.00	0.95
2.	Alcoholic Bev. & Tobacco	1.41	266.59	266.59	217.85	0.00	22.37	0.00	0.37
3.	Clothing & Footwear	7.57	210.97	210.19	193.59	0.37	8.98	0.03	0.71
4.	Housing, Water, Electricity, Gas & Fuels	29.41	171.70	171.65	157.75	0.03	8.84	0.01	2.22
5.	Furnishing & Household Equipment Maintenance	4.21	207.21	205.48	190.99	0.84	8.49	0.04	0.37
6.	Health	2.19	174.47	173.42	164.23	0.61	6.24	0.01	0.12
7.	Transport	7.20	205.10	198.70	194.54	3.22	5.43	0.23	0.41
8.	Communication	3.22	129.85	129.83	129.66	0.02	0.15	0.00	0.00
9.	Recreation & Culture	2.02	189.34	189.02	181.87	0.17	4.11	0.00	0.08
10.	Education	3.94	191.93	191.45	166.49	0.25	15.28	0.01	0.54
11.	Restaurants & Hotels	1.23	242.00	239.85	221.68	0.90	9.17	0.01	0.13
12.	Miscellaneous	2.76	219.39	218.63	206.86	0.35	6.06	0.01	0.19

Main contributors to month-on-month and year-on-year percentage changes are given below and detail is given in Annexure A.

1. **Month-on-month** Top few commodities which varied from previous month i.e. August 2014 are given below:-

Food Items Increased: Tomatoes (33.88%), Sugar (6.33%), Gur (2.75%), Honey (2.32%), Pulse Mash (2.24%), Onions (2.19%), Tea (1.42%) and Eggs (1.21%).

Decreased: Chicken (11.41%), Fresh Fruits (4.17%), Pulse Moong (2.73%), and Potatoes (2.35%).

Non-food Items Increased: Transport Services (8.52%), Household Servant (1.63%), Furniture (1.20%), Cleaning & Laundry (1.19%), Tailoring (1.14%) and House Hold Textile (1.12%).

Decreased: Motor Fuel (0.55%) and Kerosene Oil (0.14%).

2. **Year-on-year:** Top few commodities which varied from previous year i.e. September 2013 are given below:-

Food Items Increased: Potatoes (99.71%), Cigarettes (22.60%), Pulse Moong (19.70%), Pulse Mash (19.04%) and Honey (16.13%).

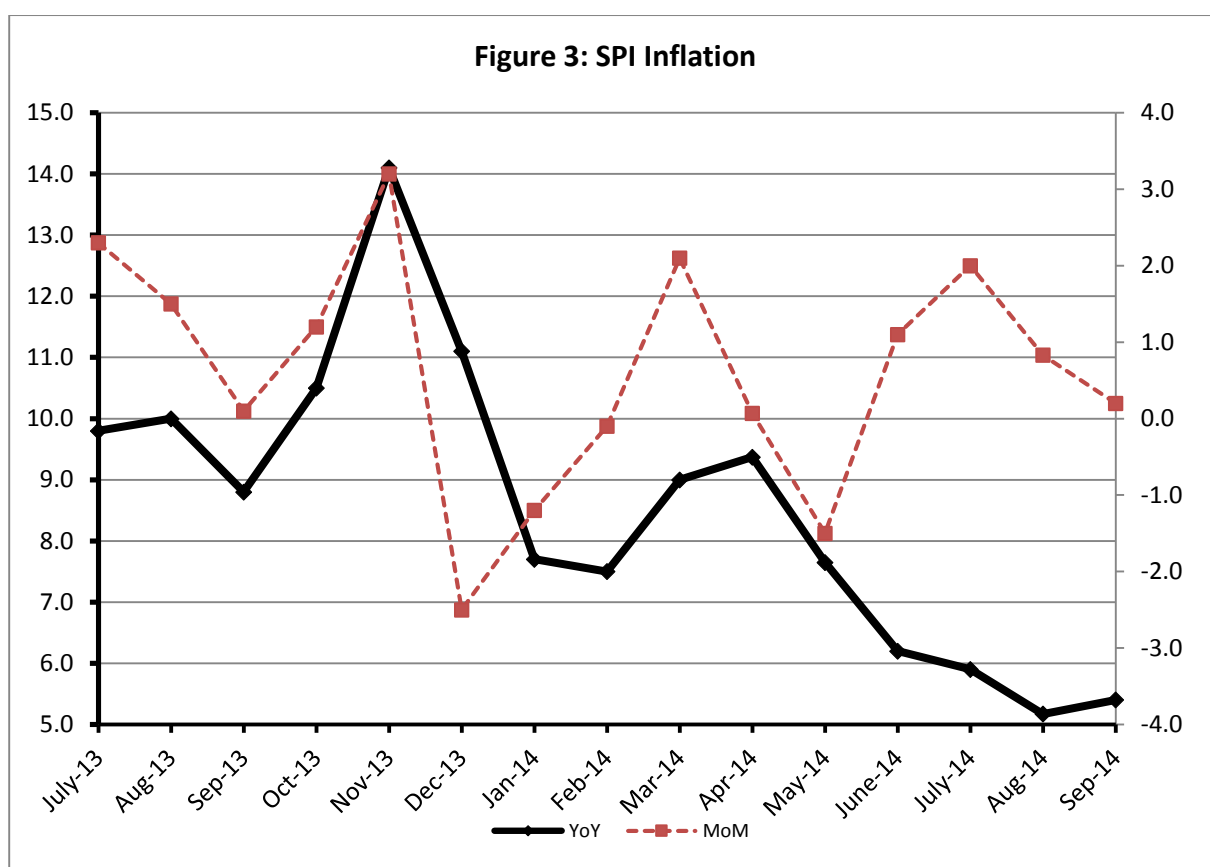
Decreased: Tea (17.61%) and Onions (9.42%).

Non-food Items Increased: Motor Vehicle Tax (36.71%), Electricity (15.82%) and Education (15.28%).

III. Sensitive Price Indicator

Quintile-wise percentage changes YoY and MoM are given below in Table 3. The series from August 2013 to September 2014 is also graphed below in Figure 3.

Table 3 : Sensitive Price Indicator (Base 2007-08)					
Quintiles	Indices			% Change September 2014 over	
	September 2014	August 2014	September 2013	August 2014	September 2013
1	209.27	208.76	198.61	0.24	5.37
2	215.18	214.85	204.40	0.15	5.27
3	217.82	217.62	202.80	0.09	7.41
4	219.55	219.57	203.93	-0.01	7.66
5	217.76	218.08	203.65	-0.15	6.93
Combined	217.06	217.08	203.05	-0.01	6.90



IV. Wholesale Price Index

The Wholesale Price Index for September 2014 is increased by 0.15% over August 2014. It is increased by 2.74% over the corresponding month of the last year. YoY and MoM movements, from July 2013 to September 2014 are also graphed below in Figure 4.

Table 4 : Wholesale Price Index by Group of Commodities (Base 2007-08)

No.	Group	Group Weight (%)	Indices			% Change Sep 2014 over		Impact (in %age points) Sep 2014 over	
			Sep 2014	Aug 2014	Sep 2013	Aug 2014	Sep 2013	Aug 2014	Sep 2013
	General	100.00	215.06	214.72	209.33	0.15	2.74	0.15	2.74
1.	Agriculture, Forestry & Fishery Products	25.77	225.47	224.73	218.32	0.33	3.28	0.09	0.88
2.	Ores & Minerals, Electricity, Gas & Water	12.04	242.99	242.91	240.04	0.03	1.23	0.00	0.17
3.	Food Products, Beverages & Tobacco, Textiles, Apparel & Leather Products	31.11	207.86	207.15	199.08	0.34	4.41	0.10	1.30
	i. Food Products, Bev. & Tobacco	20.07	215.75	213.92	199.98	0.86	7.89	0.17	1.51
	ii. Textiles and Apparel	10.33	193.42	194.26	198.31	-0.43	-2.47	-0.04	-0.24
	iii. Leather Products	0.71	194.60	203.42	184.75	-4.34	5.32	-0.03	0.03
4.	Other Transportable Goods except Metal Products, Machinery & Equipment	22.37	214.53	215.14	213.44	-0.30	0.51	-0.07	0.12
5.	Metal Products, Machinery & Equipment	8.72	172.76	172.17	166.39	0.34	3.83	0.02	0.27

Main contributors to month-on-month and year-on-year percentage changes are given below and detail is given in Annexure B.

1. **Month-on-month** Top few commodities which varied from previous month i.e. August, 2014 are given below:-

Increased: Pipe fittings (9.29%), Vegetables (6.07%), Sugar(5.14%), Fiber Crops(4.17%), Ceramics & Sanitary fixture(3.16%), Electric wires (3.13%), Quilts (3.02%), Milk and Cream in solid forms(2.46%) and Timber (2.31%).

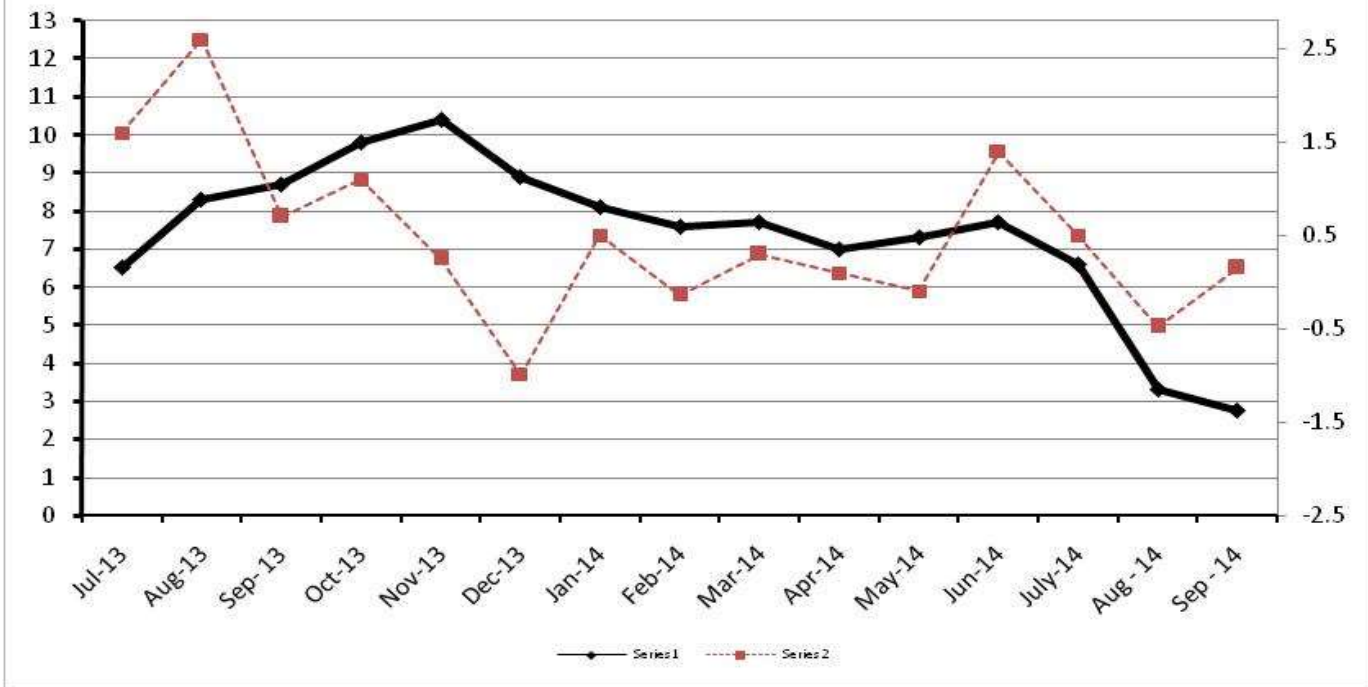
Decreased: Poultry (15.07%), Cotton seeds (11.21%), Potatoes (8.41%), Sorghum/Jowar (6.33%), Stimulant & Spices crops (5.78%), Fresh fruits (4.54%), Oil cakes (2.28%), Kerosene oil(2.18%), Diesel oil(1.60%) and Motor spirit (1.30%).

2. **Year-on-year** Top few commodities which varied from previous year i.e. September, 2013 are given below:-

Increased: Potatoes (118.13%), Stimulants and Spice Crops (58.740%), Leather without hair (51.50%), Lathe Machine (40.27%), Dyeing Material (37.90%), Insecticides (37.48%) and Tractors (32.46%).

Decreased: Coffee & Tea (20.36%), Fiber Crops (16.79%) and Cotton Yarn (13.26%)

Figure 4: WPI Inflation



Annexure A: Consumer Price Index Numbers by Commodity Groups & Commodities (2007-08=100)

		Index Numbers				% Change in Sep 2014 over			
General		100.0000	199.40	198.70	185.18	+	0.35	+	7.68
Food and non-alcoholic Bevera		34.8343	221.77	221.77	208.29	+	0.00	+	6.47
01	Wheat	0.3477	209.37	208.97	210.43	+	0.19	-	0.50
02	Wheat Flour	4.1648	222.34	222.00	219.75	+	0.15	+	1.18
03	Wheat Product	0.0959	218.67	218.37	200.79	+	0.14	+	8.90
04	Besan	0.1500	170.88	169.93	172.67	+	0.56	-	1.04
05	Rice	1.5821	195.91	195.30	191.49	+	0.31	+	2.31
06	Cereals	0.1563	238.08	237.79	225.08	+	0.12	+	5.78
07	Bakery & Confectionary	1.1550	206.01	205.44	192.20	+	0.28	+	7.19
08	Nimco	0.4574	235.78	234.50	212.27	+	0.55	+	11.08
09	Meat	2.4303	242.68	241.09	227.90	+	0.66	+	6.49
10	Chicken	1.3596	179.10	202.16	172.37	-	11.41	+	3.90
11	Fish	0.2970	215.15	216.83	204.54	-	0.77	+	5.19
12	Milk Fresh	6.6800	245.51	244.41	229.63	+	0.45	+	6.92
13	Milk Products	0.6338	241.27	240.29	224.25	+	0.41	+	7.59
14	Milk Powder	0.1129	224.30	224.27	196.38	+	0.01	+	14.22
15	Eggs	0.4555	214.36	211.80	200.85	+	1.21	+	6.73
16	Mustard Oil	0.0952	159.12	159.06	157.73	+	0.04	+	0.88
17	Cooking Oil	1.7538	161.97	161.90	161.00	+	0.04	+	0.60
18	Vegetable Ghee	2.0714	156.72	157.85	155.71	-	0.72	+	0.65
19	Dry Fruits	0.2543	237.15	236.61	219.52	+	0.23	+	8.03
20	Fresh Fruits	1.8649	216.18	225.59	192.94	-	4.17	+	12.05
21	Pulse Masoor	0.2712	181.03	180.35	158.34	+	0.38	+	14.33
22	Pulse Moong	0.2336	279.56	287.40	233.56	-	2.73	+	19.70
23	Pulse Mash (Washed)	0.2098	222.97	218.09	187.31	+	2.24	+	19.04
24	Pulse Gram	0.2361	167.35	167.40	165.50	-	0.03	+	1.12
25	Gram Whole	0.1616	179.24	179.10	176.72	+	0.08	+	1.43
26	Beans	0.0269	242.22	241.77	233.29	+	0.19	+	3.83
27	Potatoes	0.4598	473.29	484.66	236.99	-	2.35	+	<u>99.71</u>
28	Onion	0.5239	256.60	251.11	283.29	+	2.19	-	9.42
29	Tomatoes	0.4318	226.41	169.12	217.79	+	33.88	+	3.96
30	Fresh Vegetables	1.7105	250.69	252.93	230.51	-	0.89	+	8.75
31	Sugar	1.0445	218.34	205.35	194.50	+	6.33	+	12.26
32	Gur	0.0220	267.14	259.98	275.82	+	2.75	-	3.15
33	Honey	0.0446	299.51	292.72	257.91	+	2.32	+	16.13
34	SweetMeat	0.2483	229.84	229.38	217.22	+	0.20	+	5.81
35	Beverages	1.1990	209.36	209.18	187.70	+	0.09	+	11.54
36	Jam, Tomato Ketchup & Pickles	0.2454	198.62	197.56	188.19	+	0.54	+	5.54
37	Condiments	0.2656	250.05	249.01	219.19	+	0.42	+	14.08
38	Spices	0.5441	230.32	229.07	214.85	+	0.55	+	7.20
39	Tea	0.8377	209.82	206.89	254.67	+	1.42	-	17.61
Alcoholic Beverages, Tobacco		1.4135	266.59	266.59	217.85	+	0.00	+	22.37
40	Cigarettes	1.3906	267.63	267.63	218.30	+	0.00	+	22.60
41	Betel Leaves & Nuts	0.0229	203.45	203.31	190.83	+	0.07	+	6.61
Clothing and footwear		7.5708	210.97	210.19	193.59	+	0.37	+	8.98
42	Cotton Cloth	1.7286	206.89	206.81	180.48	+	0.04	+	14.63
43	Woolen Cloth	0.8759	228.99	228.48	208.95	+	0.22	+	9.59
44	Readymade Garments	0.9739	212.38	211.17	191.11	+	0.57	+	11.13
45	Woolen Readymade Garments	0.3964	218.60	218.34	194.99	+	0.12	+	12.11
46	Hosiery	0.5094	222.19	221.44	200.13	+	0.34	+	11.02
47	Dopatta	0.4412	226.62	226.08	209.40	+	0.24	+	8.22
48	Cleaning and Laundry	0.2110	233.42	230.67	212.30	+	1.19	+	9.95
49	Tailoring	0.8840	258.78	255.86	232.70	+	1.14	+	11.21

Annexure A: Consumer Price Index Numbers by Commodity Groups & Commodities (2007-08=100)

		Index Numbers				% Change in Sep 2014 over			
50	Footwear	1.5504	164.05	163.89	169.25	+	0.10	- 3.07	
	Housing, water, Elec., Gas an	29.4149	171.70	171.65	157.75	+	0.03	+	8.84
51	House Rent	21.8149	159.82	159.82	148.24	+	0.00	+	7.81
52	Construction Input Items	0.5623	236.34	234.79	217.40	+	0.66	+	8.71
53	Construction Wage Rates	0.3331	202.74	201.60	188.19	+	0.57	+	7.73
54	Water Supply	0.4971	149.92	149.92	145.80	+	0.00	+	2.83
55	Electricity	4.3985	227.44	227.44	196.37	+	0.00	+	15.82
56	Gas	1.5756	143.81	143.81	143.81	+	0.00	+	0.00
57	Kerosene Oil	0.0057	278.65	279.05	288.89	-	0.14	-	3.54
58	Firewood Whole	0.2277	265.66	265.16	249.90	+	0.19	+	6.31
	Furnishing and household equi	4.2082	207.21	205.48	190.99	+	0.84	+	8.49
59	Furniture	0.3315	198.64	196.29	180.68	+	1.20	+	9.94
60	Household Textiles	0.6489	202.95	200.71	186.39	+	1.12	+	8.88
61	Household Equipment	0.5936	171.62	171.16	163.50	+	0.27	+	4.97
62	Utensils	0.3212	208.66	206.97	189.05	+	0.82	+	10.37
63	Plastic Products	0.2547	197.49	196.98	186.86	+	0.26	+	5.69
64	Washing Soaps & Detergents	0.7893	221.85	221.65	210.04	+	0.09	+	5.62
65	Sewing Needle & Dr Cell	0.1496	182.30	182.20	168.44	+	0.05	+	8.23
66	Household Servant	1.0432	225.81	222.19	202.20	+	1.63	+	11.68
67	Marriage Hall Charges	0.0762	226.93	225.21	204.59	+	0.76	+	10.92
	Health	2.1868	174.47	173.42	164.23	+	0.61	+	6.24
68	Drugs & Medicines	1.2667	146.53	145.60	142.09	+	0.64	+	3.12
69	Medical Equipments	0.0080	221.31	220.56	208.73	+	0.34	+	6.03
70	Doctor (MBBS) Clinic Fee	0.5904	235.89	234.15	212.47	+	0.74	+	11.02
71	Medical Tests	0.3217	170.57	170.34	161.78	+	0.14	+	5.43
	Transport	7.2023	205.10	198.70	194.54	+	3.22	+	5.43
72	Motor Vehicles	0.6630	163.72	163.48	159.74	+	0.15	+	2.49
73	Motor Vehicle Accessories	0.2439	229.28	229.13	219.28	+	0.07	+	4.56
74	Motor Fuel	3.0269	189.43	190.47	190.34	-	0.55	-	0.48
75	Mechanical Service	0.4552	207.03	206.40	195.60	+	0.31	+	5.84
76	Motor Vehicle Tax	0.1099	210.18	210.18	153.74	+	0.00	+	36.71
77	Transport Services	2.7034	230.09	212.03	207.03	+	8.52	+	11.14
	Communication	3.2198	129.85	129.83	129.66	+	0.02	+	0.15
78	Postal Services	0.0662	216.26	216.02	215.89	+	0.11	+	0.17
79	Communication & Apparatus	3.1536	128.03	128.02	127.85	+	0.01	+	0.14
	Recreation and culture	2.0227	189.34	189.02	181.87	+	0.17	+	4.11
80	Recreation & Culture	0.8634	127.81	127.46	124.90	+	0.27	+	2.33
81	Text Books	0.5706	280.89	280.60	266.88	+	0.10	+	5.25
82	Newspapers	0.1934	175.42	175.42	170.49	+	0.00	+	2.89
83	Stationery	0.3953	198.41	197.98	189.17	+	0.22	+	4.88
	Education	3.9431	191.93	191.45	166.49	+	0.25	+	15.28
84	Education	3.9431	191.93	191.45	166.49	+	0.25	+	15.28
	Restaurants and hotels	1.2286	242.00	239.85	221.68	+	0.90	+	9.17
85	Readymade Food	1.2286	242.00	239.85	221.68	+	0.90	+	9.17
	Misc. goods and services	2.7550	219.39	218.63	206.86	+	0.35	+	6.06
86	Personal Care	1.4935	203.47	202.70	188.30	+	0.38	+	8.06
87	Cosmetics	0.3853	183.51	183.29	169.63	+	0.12	+	8.18
88	Blades	0.0322	184.82	184.82	180.16	+	0.00	+	2.59
89	Personal Equipments	0.8440	265.25	264.24	257.70	+	0.38	+	2.93

Annexure B: Wholesale Price Indices by Major Groups & Commodities

(2007-08=100)

	Index Numbers				% Change in Sep 2014 over			
General	100.0000	215.06	214.73	209.33	+	0.15	+	2.74
Agriculture Forestry & Fisher	25.7674	225.48	224.73	218.32	+	0.33	+	3.28
001 Wheat	0.6297	214.19	214.37	221.91	-	0.08	-	3.48
002 Maize	0.6764	195.66	193.63	193.51	+	1.05	+	1.11
003 Rice	2.4413	181.27	180.50	178.15	+	0.43	+	1.75
004 Sorghum / Jowar	0.0214	307.35	328.11	266.44	-	6.33	+	15.35
005 Millet / Bajra	0.0374	173.72	174.19	187.35	-	0.27	-	7.28
006 Vegetables	1.2441	322.71	304.25	314.40	+	6.07	+	2.64
007 Fresh Fruits	1.5144	244.99	256.65	220.14	-	4.54	+	11.29
008 Dry Fruits	0.2478	218.98	217.97	188.16	+	0.46	+	16.38
009 Cotton Seeds	1.1511	192.17	216.43	165.07	-	11.21	+	16.42
010 Other Oil Seeds	0.0722	190.46	189.39	175.36	+	0.56	+	8.61
011 Edible Roots / Potatoes	0.2540	504.54	550.88	231.30	-	8.41	+	<u>118.13</u>
012 Stimulant & Spice Crops	0.1634	404.43	429.22	254.77	-	5.78	+	<u>58.74</u>
013 Pulses	0.4901	193.89	194.38	176.48	-	0.25	+	9.87
014 Sugar Crops	1.0725	267.92	267.92	267.92	+	0.00	+	0.00
015 Fibre Crops	5.3169	182.68	175.37	219.53	+	4.17	-	16.79
016 Unmanufactured Tobacco	0.0742	207.00	206.81	181.07	+	0.09	+	14.32
017 Poultry	0.5633	180.11	212.06	177.47	-	15.07	+	1.49
018 Raw Milk from Bovine Animals	7.0279	248.75	243.95	222.52	+	1.97	+	11.79
019 Eggs	0.5034	217.31	218.87	205.51	-	0.71	+	5.74
020 Raw Animal Materials / Wool	0.0351	162.90	161.50	153.55	+	0.87	+	6.09
021 Hides & Fur Skins, Raw	0.4834	145.38	145.14	145.03	+	0.17	+	0.24
022 Fuel Wood in Logs	0.0179	243.47	243.47	234.96	+	0.00	+	3.62
023 Fish Live Fresh or Chilled	1.7295	244.41	243.89	249.62	+	0.21	-	2.09
Ores/Minerals, Elec., Gas & W	12.0389	242.99	242.91	240.04	+	0.03	+	1.23
024 Coal not Agglomerated	0.7508	223.53	223.53	223.53	+	0.00	+	0.00
025 Natural Gas Liquified	5.7385	202.94	202.79	204.58	+	0.07	-	0.80
026 Salt & Pure Sodium Chloride	0.0584	248.50	248.50	217.04	+	0.00	+	14.50
027 Electrical Energy	5.4912	287.44	287.44	279.61	+	0.00	+	2.80
Food, Beverages, Tobacco, Textil	31.1122	207.86	207.15	199.08	+	0.34	+	4.41
Food Products, Beverages &	20.0718	215.76	213.92	199.98	+	0.86	+	7.89
028 Meat of Animals	3.4559	256.74	252.65	233.93	+	1.62	+	9.75
029 Vegetables & Fruit Juice	0.0058	194.12	194.12	192.05	+	0.00	+	1.08
030 Dried Fruits & Nuts	0.1733	219.98	219.98	223.21	+	0.00	-	1.45
031 Fruit Juices	0.3880	171.34	171.34	165.08	+	0.00	+	3.79
032 Vegetable Oils Refined	1.9242	162.58	163.56	161.04	-	0.60	+	0.96
033 Vegetable Ghee	1.5632	139.10	139.94	140.69	-	0.60	-	1.13
034 Oil Cakes	0.9611	208.10	212.95	176.21	-	2.28	+	18.10
035 Processed Liquid Milk	4.4437	234.27	231.82	205.54	+	1.06	+	13.98
036 Milk & Cream in Solid Form	0.0316	219.41	214.15	179.40	+	2.46	+	22.30
037 Ice Cream	0.0047	219.91	219.91	209.53	+	0.00	+	4.95
038 Dairy Products N.E.C	0.0117	235.94	235.94	216.63	+	0.00	+	8.91
039 Wheat Flour	2.3034	200.80	201.98	202.67	-	0.58	-	0.92
040 Other Cereal Flour	0.0604	137.97	136.37	138.44	+	1.17	-	0.34
041 Sugar Refined	1.7975	231.31	220.01	212.34	+	5.14	+	8.93
042 Chocolate	0.0139	99.19	99.19	99.19	+	0.00	+	0.00
043 Sugar Confectionary	0.0738	102.28	102.28	102.28	+	0.00	+	0.00
044 Coffee & Tea	0.7303	183.60	181.34	230.54	+	1.25	-	20.36
045 Spices	0.1449	191.60	191.50	195.85	+	0.05	-	2.17
046 Other Food Products	0.0336	296.10	294.38	316.68	+	0.58	-	6.50
047 Mineral Water	0.0207	185.63	185.63	180.22	+	0.00	+	3.00
048 Beverages	0.6303	169.40	169.18	139.63	+	0.13	+	21.32
049 Tobacco Products	1.2998	290.52	290.52	242.41	+	0.00	+	19.85
Textiles & Apparels	10.3289	193.42	194.26	198.31	-	0.43	-	2.47
050 Cotton Yarn	5.2491	192.90	195.72	222.40	-	1.44	-	13.26
051 Nylon Yarn	0.1719	164.84	163.67	182.19	+	0.71	-	9.52
052 Blended Yarn	0.1689	193.92	193.92	200.64	+	0.00	-	3.35
053 Woven Fabrics	0.0128	226.82	226.82	217.16	+	0.00	+	4.45
054 Cotton Fabrics	0.6343	196.81	196.81	187.43	+	0.00	+	5.00
055 Other Fabrics	1.1016	203.01	203.01	175.74	+	0.00	+	15.52
056 Silk & Reyon Fabrics	0.7350	175.35	175.35	160.08	+	0.00	+	9.54

Annexure B: Wholesale Price Indices by Major Groups & Commodities

(2007-08=100)

		Index Numbers				% Change in Sep 2014 over			
057	Towels	0.1235	246.16	244.18	218.47	+	0.81	+	12.67
058	Blankets	0.0029	223.55	219.66	185.21	+	1.77	+	20.70
059	Bed Sheets	0.0913	242.12	242.12	217.78	+	0.00	+	11.18
060	Quilts	0.0019	177.63	172.42	156.32	+	3.02	+	13.63
061	Woolen Carpets	0.0383	132.14	132.14	106.55	+	0.00	+	24.02
062	Synthetic Carpets	0.0566	126.27	125.42	114.41	+	0.68	+	10.37
063	Hosiery Products	0.8832	208.91	206.13	185.30	+	1.35	+	12.74
064	Readymade Garments	1.0576	183.14	180.12	152.13	+	1.68	+	20.38
	Leather Products	0.7115	194.58	203.42	184.76	-	4.35	+	5.32
065	Leather Without Hair	0.2973	212.86	216.45	140.50	-	1.66	+	51.50
066	Other Leather N.E.C	0.2567	210.44	230.78	263.79	-	8.81	-	20.22
067	Footwears	0.1575	134.22	134.22	139.49	+	0.00	-	3.78
	Other Transportable Goods	22.3659	214.53	215.17	213.44	-	0.30	+	0.51
068	Timber	0.0165	188.95	184.69	161.45	+	2.31	+	17.03
069	Printing Paper	0.4279	169.34	169.34	164.84	+	0.00	+	2.73
070	Hard Board	0.1579	229.17	229.17	208.33	+	0.00	+	10.00
071	Coke	0.2797	163.45	163.45	163.45	+	0.00	+	0.00
072	Motor Spirit	1.5336	180.02	182.40	184.38	-	1.30	-	2.36
073	Diesel Oil	5.2664	256.53	260.69	270.32	-	1.60	-	5.10
074	Kerosine Oil	0.2151	281.74	288.01	282.64	-	2.18	-	0.32
075	Furnace Oil	3.2664	171.21	169.47	179.02	+	1.03	-	4.36
076	Mobil Oil	0.7114	201.17	201.17	192.70	+	0.00	+	4.40
077	Chemicals	1.7720	195.25	194.21	165.49	+	0.54	+	17.98
078	Dyeing Material	0.1539	143.77	143.77	104.26	+	0.00	+	37.90
079	Fertilizers	2.8657	271.20	270.28	269.45	+	0.34	+	0.65
080	Pesticides	0.2763	266.71	270.02	213.45	-	1.23	+	24.95
081	Insecticides	0.1276	178.63	181.05	129.93	-	1.34	+	37.48
082	Paints & Varnishes	0.1916	279.37	276.16	247.70	+	1.16	+	12.79
083	Medicines	1.1428	145.03	144.21	138.77	+	0.57	+	4.51
084	Soaps & Detergents	0.8168	176.33	175.81	178.79	+	0.30	-	1.38
085	Auto Tyres	0.2703	188.28	188.21	185.57	+	0.04	+	1.46
086	Plastic Products	0.4550	206.32	205.01	199.06	+	0.64	+	3.65
087	Glass sheets	0.2089	209.86	209.86	204.55	+	0.00	+	2.60
088	Other Glass Articles	0.1635	218.27	218.27	206.09	+	0.00	+	5.91
089	Ceramics & Sanitary Fixture	0.0244	207.26	200.91	166.88	+	3.16	+	24.20
090	Bricks, Blocks & Tiles	0.1566	203.25	202.38	188.17	+	0.43	+	8.01
091	Cement	1.8145	207.79	207.44	201.55	+	0.17	+	3.10
092	Bed Foam	0.0006	150.83	150.83	145.33	+	0.00	+	3.78
093	Matches	0.0505	143.20	143.20	143.20	+	0.00	+	0.00
	Metal Product, Machinery & Eq	8.7156	172.76	172.17	166.39	+	0.34	+	3.83
094	Pig Iron	0.0593	128.97	128.97	128.97	+	0.00	+	0.00
095	Steel Bar & Sheets	1.4022	151.35	149.75	141.14	+	1.07	+	7.23
096	Pipe Fittings	0.0780	191.63	175.34	150.29	+	9.29	+	27.51
097	Steel Products	0.3879	172.77	170.24	168.46	+	1.49	+	2.56
098	Engines & Motors	0.0046	109.07	109.07	109.07	+	0.00	+	0.00
099	Vacuum Pumps	0.0155	115.39	115.39	115.39	+	0.00	+	0.00
100	Air Conditioners	0.0049	195.53	195.53	179.78	+	0.00	+	8.76
101	Cultivators	0.0551	226.90	226.90	191.51	+	0.00	+	18.48
102	Chuff Cutter	0.1293	149.20	149.20	144.94	+	0.00	+	2.94
103	Tractors	0.0028	214.54	214.54	161.96	+	0.00	+	32.46
104	Lathe Machines	0.0525	208.81	208.81	148.86	+	0.00	+	40.27
105	Concrete Mixture	0.0107	138.83	138.83	138.83	+	0.00	+	0.00
106	Fridge, WashM, SewM, Fans, Iron	1.1645	196.04	195.93	180.51	+	0.06	+	8.60
107	Electric Wires	0.0912	184.79	179.18	168.13	+	3.13	+	9.91
108	Lighting Equipments	1.4431	164.95	164.95	162.27	+	0.00	+	1.65
109	Radio & Television	0.1843	126.49	126.49	126.49	+	0.00	+	0.00
110	Motor Vehicles	0.0244	182.59	182.59	174.21	+	0.00	+	4.81
111	Motorcycles	0.2570	126.92	126.92	124.80	+	0.00	+	1.70
112	Bicycles	3.3483	182.84	182.84	180.99	+	0.00	+	1.02

