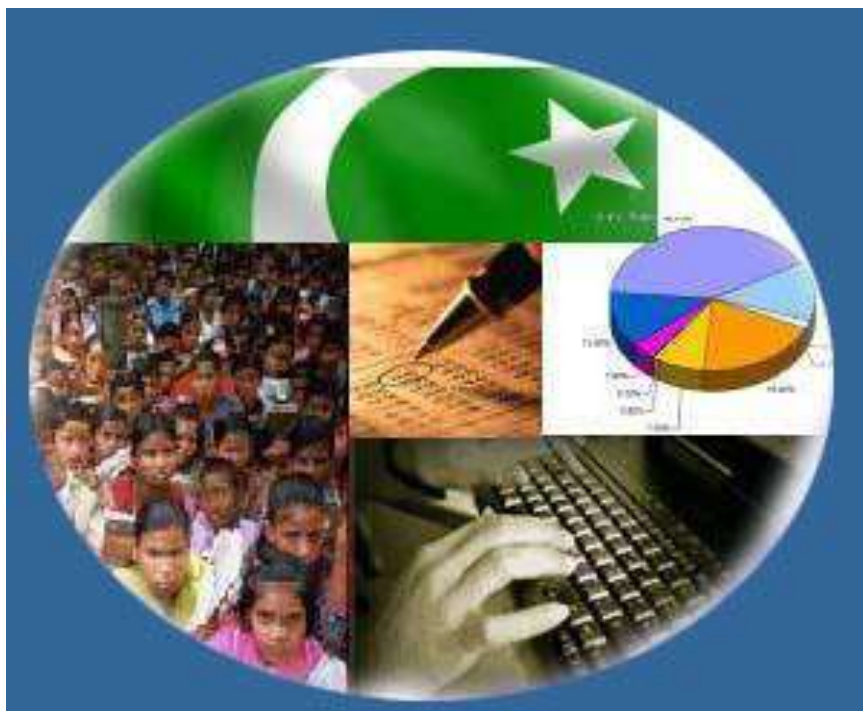




# Monthly Review on Price Indices



**May, 2014**  
**(Base 2007-08)**

**Government of Pakistan**  
**Statistics Division**  
**Pakistan Bureau of Statistics**  
**Islamabad**



## I. Inflation in Brief

1. CPI inflation, General, increased by 8.3% on year-on-year basis in May 2014 as compared to 9.2% in the previous month and by 5.1% in May 2013. On month-on-month basis, it decreased by 0.3% in May 2014 as compared to an increase of 1.7% in the previous month and increased by 0.5% in May 2013.
2. Core inflation measured by non-food non-energy CPI (Core NFNE) increased by 8.7% on (YoY) basis in May 2014 as compared to 8.5% in the previous month and by 8.1% in May 2013. On (MoM) basis, it increased by 0.5% in May 2014 as compared to 1.9% in the previous month and 0.3% in May 2013.
3. Core inflation, measured by 20% weighted trimmed mean CPI (Core Trimmed) increased by 8.3% on (YoY) basis in May 2014 as compared to 9.0% in the previous month and by 6.7% in May 2013. On (MoM) basis, it increased by 0.3% in May 2014 as compared to 0.9% in the previous month and by 0.3% in May 2013.
4. SPI inflation on YoY basis increased by 7.7% in May 2014 as compared to 9.4% a month earlier and 6.8% in May 2013. On MoM basis, it decreased by 1.5% in May 2014 as compared to an increase of 0.1% a month earlier and 0.1% in May 2013.
5. WPI inflation on YoY basis increased by 7.3% in May 2014 as compared to 7.0% a month earlier and 4.1% in May 2013. WPI inflation on MoM basis decreased by 0.1% in May 2014 as compared to increase by 0.1% a month earlier and decreased by 0.4% in May 2013.
6. Figures 1 and 2 show graphically the data of Table 1. Table 1.1 shows "Period Average" and "YoY" percent changes of indices in three years.

**Table 1: Inflation (%) (Base 2007-08)**

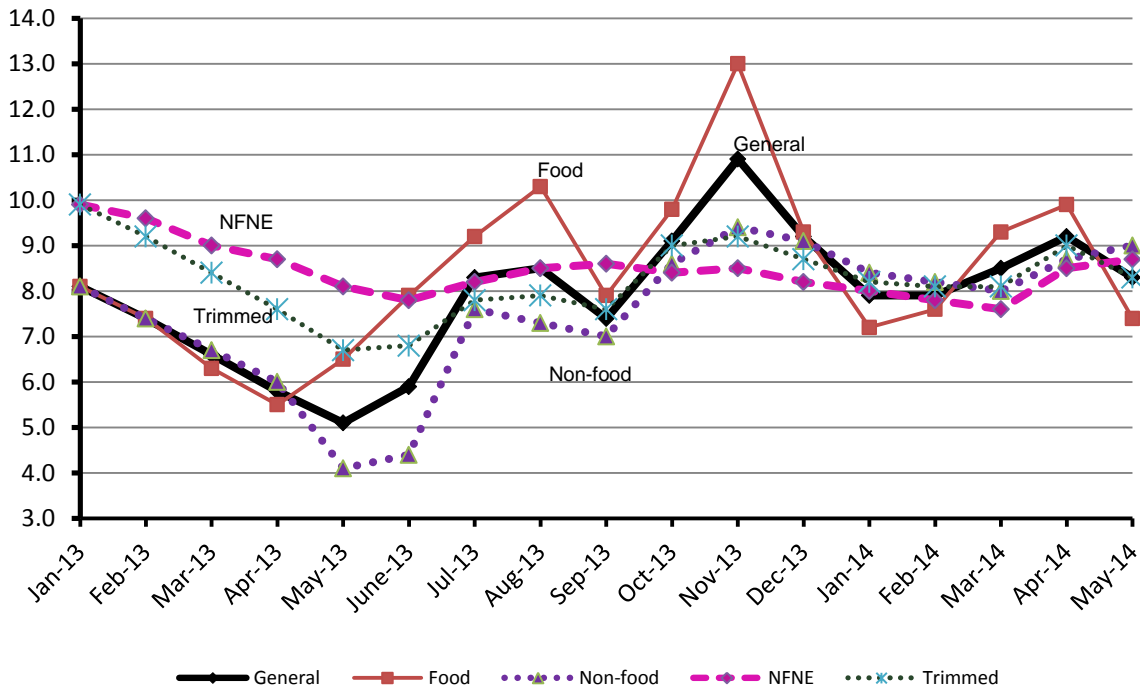
Period	CPI						Core Inflation				SPI**		WPI	
	General		Food		Non-food		NFNE*		Trimmed		YoY	MoM	YoY	MoM
	YoY	MoM	YoY	MoM	YoY	MoM	YoY	MoM	YoY	MoM				
Apr 13	5.8	1.1	5.5	1.4	6.0	0.9	8.7	1.1	7.6	0.7	6.6	-0.3	6.8	0.8
May13	5.1	0.5	6.5	1.1	4.1	0.1	8.1	0.3	6.7	0.3	6.8	0.1	4.1	-0.4
Jun 13	5.9	0.7	7.9	1.1	4.4	0.5	7.8	0.4	6.8	0.6	7.9	2.5	5.2	1.0
Jul 13	8.3	2.0	9.2	3.0	7.6	1.3	8.2	1.5	7.8	1.2	9.8	2.3	6.5	1.6
Aug 13	8.5	1.2	10.3	2.0	7.3	0.6	8.5	0.6	7.9	0.6	10.1	1.5	8.3	2.6
Sep 13	7.4	-0.3	7.9	-1.5	7.0	0.6	8.6	0.5	7.6	0.6	8.8	0.1	8.7	0.7
Oct 13	9.1	2.0	9.8	1.7	8.6	2.2	8.4	0.9	9.0	0.8	10.5	1.2	9.8	1.1
Nov 13	10.9	1.3	13.0	2.6	9.4	0.3	8.5	0.3	9.2	0.4	14.1	3.2	10.4	0.2
Dec 13	9.2	-1.3	9.3	-3.3	9.1	0.2	8.2	0.2	8.7	0.4	11.1	-2.5	8.9	-1.0
Jan 14	7.9	0.5	7.2	0.0 <sup>1</sup>	8.4	0.9	8.0	1.0	8.2	0.6	7.7	-1.2	8.1	0.5
Feb 14	7.9	-0.3	7.6	-1.0	8.2	0.2	7.8	0.2	8.1	0.2	7.5	-0.1	7.6	-0.1
Mar 14	8.5	1.0	9.3	2.1	8.0	0.2	7.6	0.3	8.1	0.3	9.0	2.1	7.7	0.3
Apr 14	9.2	1.7	9.9	2.0	8.7	1.5	8.5	1.9	9.0	0.9	9.4	0.1	7.0	0.1
May14	8.3	-0.3	7.4	-1.2	9.0	0.4	8.7	0.5	8.3	0.3	7.7	-1.5	7.3	-0.1

\*NFNE is non-food non-energy, \*\* SPI for quintile 1 <sup>1</sup> Actual figure is -0.04, displayed in rounded figure

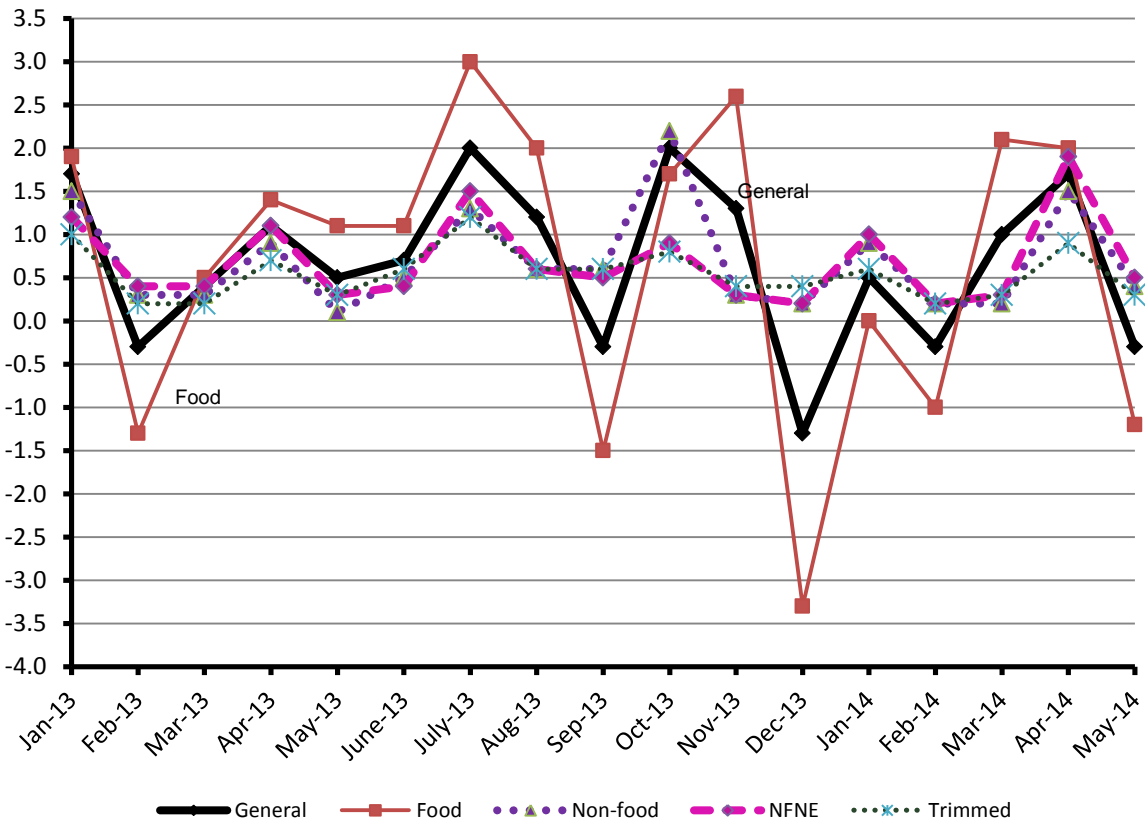
**Table 1.1 : Period Average and YoY % Changes of Indices (Base 2007-08)**

Index	Averages July-May % Changes			May over May % Changes		
	2013-14	2012-13	2011-12	2013-14	2012-13	2011-12
CPI	8.66	7.51	10.97	8.34	5.13	12.29
SPI	9.59	7.76	6.84	7.65	6.78	8.08
WPI	8.19	7.55	10.83	7.34	4.10	7.06

**Figure 1: CPI Inflation YoY, Special Indices**



**Figure 2: CPI Inflation MoM, Special Indices**



## II. Consumer Price Index (CPI)

The Consumer Price Index of May, 2014 has decreased by 0.26% over April, 2014 and increased by 8.34% over corresponding month of the last year, i.e. May 2013.

**Table 2 : Consumer Price Index by Group of Commodities and Services (Base 2007-08)**

No	Group	Group Weight (%)	Indices			% Change May 2014 over		Impact (In % points) May 2014 Over	
			May 2014	Apr 2014	May 2013	Apr 2014	May 2013	Apr 2014	May 2013
	General	<b>100.00</b>	<b>193.55</b>	<b>194.06</b>	<b>178.65</b>	<b>-0.26</b>	<b>8.34</b>	<b>-0.26</b>	<b>8.34</b>
1.	Food & Non-alcoholic Bev.	34.83	213.57	216.45	200.01	-1.33	6.78	-0.52	2.64
	<i>Non-perishable Food Items</i>	29.84	211.67	213.34	197.71	-0.78	7.06	-0.26	2.33
	<i>Perishable Food Items</i>	4.99	224.92	235.05	213.76	-4.31	5.22	-0.26	0.31
2.	Alcoholic Bev. & Tobacco	1.41	223.66	221.91	191.19	0.79	16.98	0.01	0.26
3.	Clothing & Footwear	7.57	205.01	202.73	183.74	1.12	11.58	0.09	0.90
4.	Housing, Water, Electricity, Gas & Fuels	29.41	169.51	169.46	154.54	0.03	9.69	0.01	2.47
5.	Furnishing & Household Equipment Maintenance	4.21	202.02	200.99	184.71	0.51	9.37	0.02	0.41
6.	Health	2.19	172.45	170.58	160.24	1.10	7.62	0.02	0.15
7.	Transport	7.20	195.03	195.61	185.52	-0.30	5.13	-0.02	0.38
8.	Communication	3.22	129.81	129.80	128.71	0.01	0.85	0.00	0.02
9.	Recreation & Culture	2.02	188.47	187.95	176.58	0.28	6.73	0.01	0.13
10.	Education	3.94	188.73	184.84	162.17	2.10	16.38	0.10	0.59
11.	Restaurants & Hotels	1.23	238.05	236.98	209.95	0.45	13.38	0.01	0.19
12.	Miscellaneous	2.76	215.29	213.15	202.61	1.00	6.26	0.01	0.20

Main contributors to month-on-month and year-on-year percentage changes are given below and detail is given in Annexure A.

1. **Month-on-month** Top few commodities which varied from previous month i.e. April 2014 are given below:-

**Food Items Increased:** Pulse Moong (4.48%), Pulse Mash (4.00%), Beverages (2.12%), Betel Leaves & Nuts (2.04%), Gur (1.88%), Condiments (1.71%), Potatoes (1.68%), Beans (1.59%), Nimco & Milk Powder (1.57% each), Milk Fresh (1.30%), Pulse Masoor (1.18%), and Milk Product & Fresh Fruits (1.12% each).

**Decreased:** Tomatoes (49.58%), Onions (9.55%), Wheat (8.81%), Eggs (8.31%), Tea (6.43%), Wheat Flour (6.07%), Fresh Vegetables (3.82%), Wheat Product (2.26%), Sugar (1.23%) and Chicken (1.11%).

**Non-food Items Increased:** Cotton Cloths (2.67%), Doctor (M.B.B.S Clinic Fee) (2.30%), Education (2.10%), Cleaning & Laundry (1.82%), Readymade Garments (1.68%), Personal Equipment (1.41%), Medical Equipment (1.35%), Utensils (1.28%) and Tailoring (1.05%).

**Decreased:** Kerosene Oil (1.2%), Motor Fuel (0.78%), Motor Vehicles (0.19%) and Transport Services (0.11%).

2. **Year-on-year:** Top few commodities which varied from previous year i.e. May 2013 are given below:-

**Food Items Increased:** Potatoes (175.43%), Pulse Moong (34.76%), Chicken (20.23%), Pulse Masoor (19.10%), Wheat Products (17.14%), Cigarettes (17.10%), Milk Powder (13.93%), and Readymade Food (13.38%)

**Decreased:** Tomatoes (50.07%), Onions (28.24%), Besan (14.40%) and Tea (13.96%).

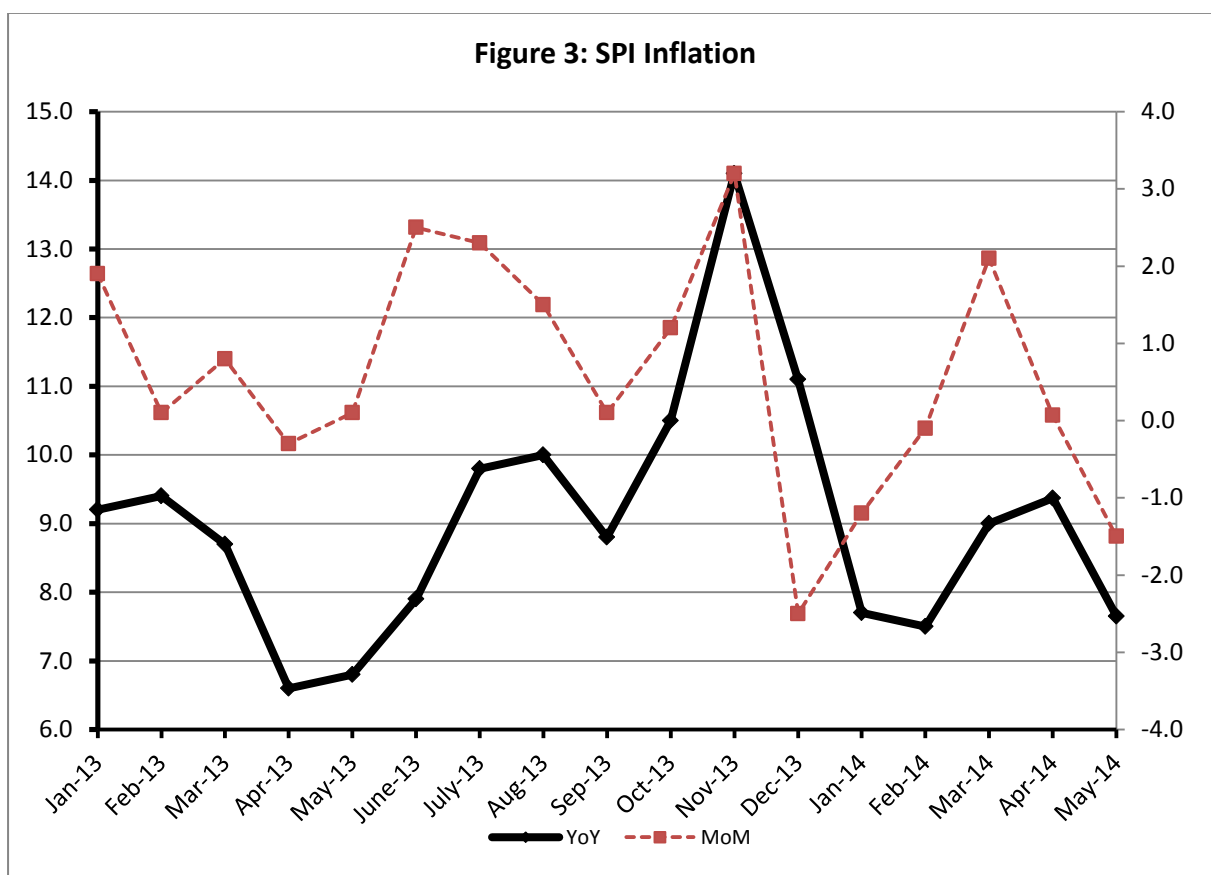
**Non-food Items Increased:** Postal Service (23.25%), Cosmetics (19.26%), Education (16.38%), Electricity (15.82%), Doctor (MBBS) Clinic Fee (15.57%), Woolen Readymade Garments (13.45%), and Readymade Garments (13.37%)

### III. Sensitive Price Indicator

Quintile-wise percentage changes YoY and MoM are given below in Table 3. The series from January 2013 to May 2014 is also graphed below in Figure 3.

**Table 3 : Sensitive Price Indicator (Base 2007-08)**

Quintiles	Indices			% Change May 2014 over	
	May 2014	Apr 2014	May 2013	Apr 2014	May 2013
1	200.84	203.91	186.57	-1.51	7.65
2	207.07	209.58	192.84	-1.20	7.38
3	209.95	212.44	191.49	-1.17	9.64
4	212.12	214.15	192.79	-0.95	10.03
5	211.34	212.68	192.96	-0.63	9.53
Combined	209.80	211.78	191.96	-0.93	9.29



## IV. Wholesale Price Index

The Wholesale Price Index for May 2014 is decreased by 0.08% over April 2014. It is increased by 7.34% over the corresponding month of the last year. YoY and MoM movements, from March 2013 to May 2014 are also graphed below in Figure 4.

Table 4 : Wholesale Price Index by Group of Commodities (Base 2007-08)									
No.	Group	Group Weight (%)	Indices			% Change May 2014 over		Impact (In % points) May 2014 over	
			May 2014	Apr 2014	May 2013	May 2014	Apr 2014	May 2013	May 2014
	<b>General</b>	<b>100.00</b>	<b>211.71</b>	<b>211.88</b>	<b>197.23</b>	<b>-0.08</b>	<b>7.34</b>	<b>-0.08</b>	<b>7.34</b>
1.	Agriculture, Forestry & Fishery Products	25.77	223.55	221.91	204.69	0.74	9.21	0.20	2.46
2.	Ores & Minerals, Electricity, Gas & Water	12.04	242.36	243.12	213.54	-0.31	13.50	-0.04	1.76
3.	Food Products, Beverages & Tobacco, Textiles, Apparel & Leather Products	31.11	201.29	202.07	191.52	-0.39	5.10	-0.11	1.54
	i. Food Products, Bev. & Tobacco	20.07	204.93	205.82	194.19	-0.43	5.53	-0.08	1.09
	ii. Textiles and Apparel	10.33	193.05	192.99	190.09	0.03	1.56	0.00	0.15
	iii. Leather Products	0.71	218.44	228.10	137.06	-4.23	59.38	-0.03	0.29
4.	Other Transportable Goods except Metal Products, Machinery & Equipments	22.37	212.29	213.45	201.98	-0.54	5.10	-0.12	1.17
5.	Metal Products, Machinery & Equipment	8.72	170.11	170.06	160.87	0.03	5.74	0.00	0.41

Main contributors to month-on-month and year-on-year percentage changes are given below and detail is given in Annexure B.

1. **Month-on-month** Top few commodities which varied from previous month i.e. April, 2014 are given below:-

**Increased:** Potatoes (11.58%), Oil Cakes (5.56%), Cotton Seeds (5.31%), Leather Without Hair (4.56%), Jowar (4.30%), Pulses (4.07%), Fibre Crops (3.66%), Fresh Fruits (3.09%), Other Oil Seeds (3.00%), Dry Fruits (2.76%), Fish (2.23%), Other Glass Articles (1.95%), Fruit Juices (1.92%), Beverages (1.81%), Processed Liquid Milk (1.66%), Stimulant & Spice Crops (1.39%), Salt & Pure Sodium Chloride (1.16%), Other Fabrics (1.08%) and Steel Bar & Sheets (1.01%).

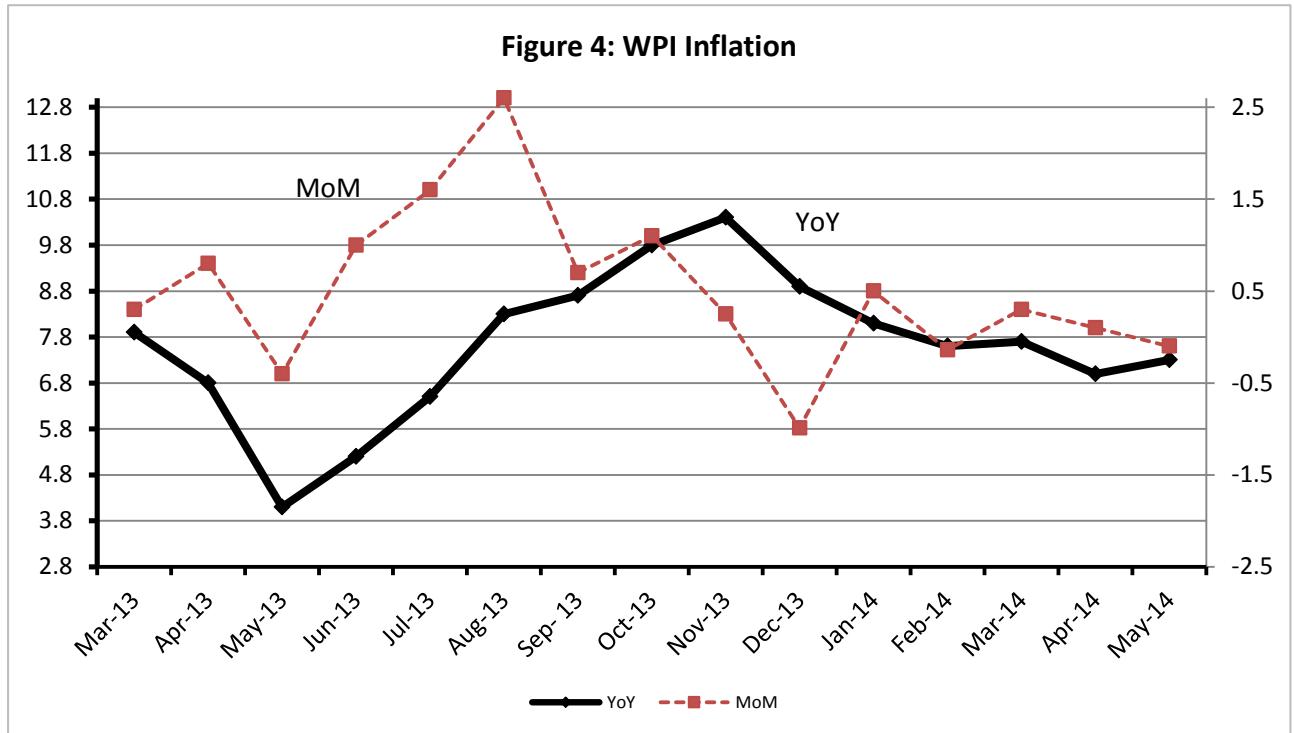
**Decreased:** Wheat (12.13%), Vegetables (10.50%), Eggs (8.73%), Wheat Flour (6.88%), Coffee & Tea (5.17%), Other Food Products (5.10%), Diesel Oil (2.38%), Poultry (2.10%) and Sugar (2.00%).



2. **Year-on-year** Top few commodities which varied from previous year i.e. May, 2013 are given below:-

**Increased:** Potatoes (230.37), Stimulants and Spice Crops (90.91%), Leather without hair (83.95%), Insecticides (45.46%), Lathe Machine (41.39%), Dyeing Material (34.08%), Tractors (32.46%), Cotton Seed (31.87%) and Jowar (30.18%).

**Decreased:** Vegetables (20.14%), Spices (19.63%) and Other Cereal Flour (18.26%).





**Annexure A: Consumer Price Index Numbers by Commodity Groups & Commodities (2007-2008=100)**

Item and Specification	Weight	Index Numbers			% Change in May 2014 over			
		May 14	Apr 14	May 13	Apr 2014	May 2013		
<b>General</b>	<b>100.0000</b>	<b>193.55</b>	<b>194.06</b>	<b>178.65</b>	-	<b>0.26</b>	+	<b>8.34</b>
<b>Food &amp; Non-alcoholic Beverage</b>	<b>34.8343</b>	<b>213.57</b>	<b>216.45</b>	<b>200.01</b>	-	<b>1.33</b>	+	<b>6.78</b>
01 Wheat	0.3477	202.46	222.02	183.40	-	8.81	+	10.39
02 Wheat Flour	4.1648	215.86	229.81	194.69	-	6.07	+	10.87
03 Wheat Product	0.0959	216.64	221.65	184.94	-	2.26	+	17.14
04 Besan	0.1500	174.07	171.35	203.36	+	1.59	-	14.40
05 Rice	1.5821	194.11	193.79	184.12	+	0.17	+	5.43
06 Cereals	0.1563	234.92	233.92	214.75	+	0.43	+	9.39
07 Bakery & Confectionary	1.1550	203.57	201.95	182.58	+	0.80	+	11.50
08 Nimco	0.4574	229.43	225.89	203.68	+	1.57	+	12.64
09 Meat	2.4303	236.99	236.36	222.80	+	0.27	+	6.37
10 Chicken	1.3596	206.39	208.71	171.66	-	1.11	+	20.23
11 Fish	0.2970	221.27	220.73	199.39	+	0.24	+	10.97
12 Milk Fresh	6.6800	239.56	236.48	222.36	+	1.30	+	7.74
13 Milk Products	0.6338	234.87	232.27	213.82	+	1.12	+	9.84
14 Milk Powder	0.1129	216.45	213.11	189.99	+	1.57	+	13.93
15 Eggs	0.4555	164.96	179.91	157.44	-	8.31	+	4.78
16 Mustard Oil	0.0952	157.00	157.86	158.01	-	0.54	-	0.64
17 Cooking Oil	1.7538	162.67	162.26	162.20	+	0.25	+	0.29
18 Vegetable Ghee	2.0714	158.90	159.80	155.64	-	0.56	+	2.09
19 Dry Fruits	0.2543	233.21	232.17	213.78	+	0.45	+	9.09
20 Fresh Fruits	1.8649	237.01	234.38	229.20	+	1.12	+	3.41
21 Pulse Masoor	0.2712	180.78	178.68	151.79	+	1.18	+	19.10
22 Pulse Moong	0.2336	295.25	282.59	219.09	+	4.48	+	34.76
23 Pulse Mash (Washed)	0.2098	202.05	194.28	186.56	+	4.00	+	8.30
24 Pulse Gram	0.2361	168.69	169.47	191.83	-	0.46	-	12.06
25 Gram Whole	0.1616	179.36	178.38	195.02	+	0.55	-	8.03
26 Beans	0.0269	243.91	247.85	217.45	-	1.59	+	12.17
27 Potatoes	0.4774	390.89	384.45	141.92	+	1.68	+	175.43
28 Onion	0.5415	200.43	221.58	279.29	-	9.55	-	28.24
29 Tomatoes	0.4494	72.63	144.04	145.46	-	49.58	-	50.07
30 Fresh Vegetables	1.6577	212.79	221.23	214.19	-	3.82	-	0.65
31 Sugar	1.0445	188.83	191.18	191.51	-	1.23	-	1.40
32 Gur	0.0220	248.63	244.04	230.64	+	1.88	+	7.80
33 Honey	0.0446	282.11	279.40	256.65	+	0.97	+	9.92
34 SweetMeat	0.2483	225.95	225.66	208.64	+	0.13	+	8.30
35 Beverages	1.1990	200.63	196.47	177.89	+	2.12	+	12.78
36 Jam, Tomato Ketchup & Pickles	0.2454	193.93	193.00	184.90	+	0.48	+	4.88
37 Condiments	0.2656	242.66	238.59	216.21	+	1.71	+	12.23
38 Spices	0.5441	221.11	219.82	220.03	+	0.59	+	0.49
39 Tea	0.8377	211.36	225.89	245.66	-	6.43	-	13.96
<b>Alcoholic Beverages, Tobacco</b>	<b>1.4135</b>	<b>223.66</b>	<b>221.91</b>	<b>191.19</b>	+	<b>0.79</b>	+	<b>16.98</b>
40 Cigarettes	1.3906	224.02	222.30	191.31	+	0.77	+	17.10
41 Betel Leaves & Nuts	0.0229	201.93	197.90	183.85	+	2.04	+	9.83
<b>Clothing &amp; Footwear</b>	<b>7.5708</b>	<b>205.01</b>	<b>202.73</b>	<b>183.74</b>	+	<b>1.12</b>	+	<b>11.58</b>
42 Cotton Cloth	1.7286	197.56	192.48	174.94	+	2.64	+	12.93
43 Woolen Cloth	0.8759	224.61	224.40	205.17	+	0.09	+	9.48
44 Readymade Garments	0.9739	205.68	202.29	181.43	+	1.68	+	13.37
45 Woolen Readymade Garments	0.3964	218.34	218.34	192.45	+	0.00	+	13.45
46 Hosiery	0.5094	216.85	214.77	193.46	+	0.97	+	12.09
47 Dopatta	0.4412	223.46	221.79	202.98	+	0.75	+	10.09
48 Cleaning and Laundry	0.2110	226.92	222.87	206.24	+	1.82	+	10.03
49 Tailoring	0.8840	245.06	242.51	217.30	+	1.05	+	12.77
50 Footwear	1.5504	163.45	163.41	149.78	+	0.02	+	9.13

**Annexure A: Consumer Price Index Numbers by Commodity Groups & Commodities (2007-2008=100)**

Item and Specification	Weight	Index Numbers			% Change in May 2014 over			
		May 14	Apr 14	May 13	Apr 2014	May 2013		
<b>Housing, Water, Elec., Gas, Other</b>	<b>29.4149</b>	<b>169.51</b>	<b>169.46</b>	<b>154.54</b>	<b>+</b>	<b>0.03</b>	<b>+</b>	<b>9.69</b>
51 House Rent	21.8149	157.05	157.05	144.57	+	0.00	+	8.63
52 Construction Input Items	0.5623	232.02	230.86	209.12	+	0.50	+	10.95
53 Construction Wage Rates	0.3331	198.08	196.20	179.47	+	0.96	+	10.37
54 Water Supply	0.4971	149.92	149.92	139.65	+	0.00	+	7.35
55 Electricity	4.3985	227.44	227.44	196.37	+	0.00	+	15.82
56 Gas	1.5756	143.81	143.81	142.58	+	0.00	+	0.86
57 Kerosene Oil	0.0057	277.67	281.05	266.68	-	1.20	+	4.12
58 Firewood Whole	0.2277	266.27	265.60	242.88	+	0.25	+	9.63
<b>Furnished H.Hold Equip.&amp; Hous</b>	<b>4.2082</b>	<b>202.02</b>	<b>200.99</b>	<b>184.71</b>	<b>+</b>	<b>0.51</b>	<b>+</b>	<b>9.37</b>
59 Furniture	0.3315	194.15	192.83	174.07	+	0.68	+	11.54
60 Household Textiles	0.6489	198.83	197.88	179.92	+	0.48	+	10.51
61 Household Equipment	0.5936	170.01	169.22	161.74	+	0.47	+	5.11
62 Utensils	0.3212	204.94	202.35	184.02	+	1.28	+	11.37
63 Plastic Products	0.2547	195.15	194.12	180.43	+	0.53	+	8.16
64 Washing Soaps & Detergents	0.7893	219.42	218.08	201.05	+	0.61	+	9.14
65 Sewing Needle & Dr Cell	0.1496	178.69	177.41	163.49	+	0.72	+	9.30
66 Household Servant	1.0432	214.31	213.99	195.10	+	0.15	+	9.85
67 Marriage Hall Charges	0.0762	220.81	219.18	197.82	+	0.74	+	11.62
<b>Health</b>	<b>2.1868</b>	<b>172.45</b>	<b>170.58</b>	<b>160.24</b>	<b>+</b>	<b>1.10</b>	<b>+</b>	<b>7.62</b>
68 Drugs & Medicines	1.2667	145.18	144.47	140.91	+	0.49	+	3.03
69 Medical Equipments	0.0080	217.98	215.08	205.49	+	1.35	+	6.08
70 Doctor (MBBS) Clinic Fee	0.5904	232.41	227.19	201.10	+	2.30	+	15.57
71 Medical Tests	0.3217	168.61	168.40	160.23	+	0.12	+	5.23
<b>Transport</b>	<b>7.2023</b>	<b>195.03</b>	<b>195.61</b>	<b>185.52</b>	<b>-</b>	<b>0.30</b>	<b>+</b>	<b>5.13</b>
72 Motor Vehicles	0.6630	159.77	160.07	156.00	-	0.19	+	2.42
73 Motor Vehicle Accessories	0.2439	226.97	225.59	213.55	+	0.61	+	6.28
74 Motor Fuel	3.0269	186.95	188.42	175.32	-	0.78	+	6.63
75 Mechanical Service	0.4552	204.29	202.66	188.19	+	0.80	+	8.56
76 Motor Vehicle Tax	0.1099	153.74	153.74	153.74	+	0.00	+	0.00
77 Transport Services	2.7034	209.96	210.19	202.50	-	0.11	+	3.68
<b>Communication</b>	<b>3.2198</b>	<b>129.81</b>	<b>129.80</b>	<b>128.71</b>	<b>+</b>	<b>0.01</b>	<b>+</b>	<b>0.85</b>
78 Postal Services	0.0662	215.89	215.89	175.16	+	0.00	+	23.25
79 Communication & Apparatus	3.1536	128.01	127.99	127.73	+	0.02	+	0.22
<b>Recreation &amp; Culture</b>	<b>2.0227</b>	<b>188.47</b>	<b>187.95</b>	<b>176.58</b>	<b>+</b>	<b>0.28</b>	<b>+</b>	<b>6.73</b>
80 Recreation & Culture	0.8634	127.00	126.96	122.42	+	0.03	+	3.74
81 Text Books	0.5706	279.73	278.49	256.86	+	0.45	+	8.90
82 Newspapers	0.1934	175.42	175.42	170.49	+	0.00	+	2.89
83 Stationery	0.3953	197.36	196.59	181.96	+	0.39	+	8.46
<b>Education</b>	<b>3.9431</b>	<b>188.73</b>	<b>184.84</b>	<b>162.17</b>	<b>+</b>	<b>2.10</b>	<b>+</b>	<b>16.38</b>
84 Education	3.9431	188.73	184.84	162.17	+	2.10	+	16.38
<b>Restaurants &amp; Hotels</b>	<b>1.2286</b>	<b>238.05</b>	<b>236.98</b>	<b>209.95</b>	<b>+</b>	<b>0.45</b>	<b>+</b>	<b>13.38</b>
85 Readymade Food	1.2286	238.05	236.98	209.95	+	0.45	+	13.38
<b>Miscellaneous Goods &amp; Service</b>	<b>2.7550</b>	<b>215.29</b>	<b>213.15</b>	<b>202.61</b>	<b>+</b>	<b>1.00</b>	<b>+</b>	<b>6.26</b>
86 Personal Care	1.4935	198.96	197.28	185.67	+	0.85	+	7.16
87 Cosmetics	0.3853	181.99	181.15	152.60	+	0.46	+	19.26
88 Blades	0.0322	183.30	182.78	174.81	+	0.28	+	4.86
89 Personal Equipments	0.8440	260.62	257.00	256.47	+	1.41	+	1.62

## Annexure B: Wholesale Price Indices by Major Groups &amp; Commodities

(2007-2008=100)

Item and Specification	Weight	Index Numbers			% Change in May 2014 over			
		May 14	Apr 14	May 13	Apr 2014	May 2013		
<b>General</b>	<b>100.0000</b>	<b>211.71</b>	<b>211.88</b>	<b>197.23</b>	-	<b>0.08</b>	+	<b>7.34</b>
<b>Agriculture Forestry &amp; Fisher</b>	<b>25.7674</b>	<b>223.55</b>	<b>221.91</b>	<b>204.69</b>	+	<b>0.74</b>	+	<b>9.21</b>
001 Wheat	0.6297	204.31	232.52	191.19	-	12.13	+	6.86
002 Maize	0.6764	190.14	188.84	188.15	+	0.69	+	1.06
003 Rice	2.4413	179.49	179.08	172.17	+	0.23	+	4.25
004 Sorghum / Jowar	0.0214	317.54	304.45	243.92	+	4.30	+	30.18
005 Millet / Bajra	0.0374	169.81	173.13	183.84	-	1.92	-	7.63
006 Vegetables	1.2441	211.50	236.30	264.84	-	10.50	-	20.14
007 Fresh Fruits	1.5144	266.20	258.23	211.71	+	3.09	+	25.74
008 Dry Fruits	0.2478	213.82	208.07	192.74	+	2.76	+	10.94
009 Cotton Seeds	1.1511	220.44	209.33	167.16	+	5.31	+	31.87
010 Other Oil Seeds	0.0722	177.64	172.46	171.25	+	3.00	+	3.73
011 Edible Roots / Potatoes	0.2540	447.26	400.84	135.38	+	11.58	+	230.37
012 Stimulant & Spice Crops	0.1634	377.03	371.86	197.49	+	1.39	+	90.91
013 Pulses	0.4901	198.71	190.93	186.89	+	4.07	+	6.32
014 Sugar Crops	1.0725	267.92	267.92	267.92	+	0.00	+	0.00
015 Fibre Crops	5.3169	217.38	209.71	205.61	+	3.66	+	5.72
016 Unmanufactured Tobacco	0.0742	196.08	195.81	176.41	+	0.14	+	11.15
017 Poultry	0.5633	215.25	219.86	176.50	-	2.10	+	21.95
018 Raw Milk from Bovine Animals	7.0279	230.92	230.05	215.36	+	0.38	+	7.23
019 Eggs	0.5034	158.06	173.18	153.52	-	8.73	+	2.96
020 Raw Animal Materials / Wool	0.0351	156.33	157.45	146.46	-	0.71	+	6.74
021 Hides & Fur Skins, Raw	0.4834	145.23	145.57	140.56	-	0.23	+	3.32
022 Fuel Wood in Logs	0.0179	243.47	242.38	228.51	+	0.45	+	6.55
023 Fish Live Fresh or Chilled	1.7295	249.76	244.31	215.28	+	2.23	+	16.02
<b>Ores/Minerals, Elec., Gas &amp; W</b>	<b>12.0389</b>	<b>242.36</b>	<b>243.12</b>	<b>213.53</b>	-	<b>0.31</b>	+	<b>13.50</b>
024 Coal not Agglomerated	0.7508	223.53	223.53	223.53	+	0.00	+	0.00
025 Natural Gas Liquefied	5.7385	201.77	203.39	200.30	-	0.80	+	0.73
026 Salt & Pure Sodium Chloride	0.0584	234.11	231.42	203.88	+	1.16	+	14.83
027 Electrical Energy	5.4912	287.44	287.44	226.10	+	0.00	+	27.13
<b>Food, Beverages, Tobacco, Textil</b>	<b>31.1122</b>	<b>201.29</b>	<b>202.07</b>	<b>191.52</b>	-	<b>0.39</b>	+	<b>5.10</b>
<b>Food Products, Beverages &amp;</b>	<b>20.0718</b>	<b>204.93</b>	<b>205.82</b>	<b>194.18</b>	-	<b>0.43</b>	+	<b>5.54</b>
028 Meat of Animals	3.4559	241.31	241.31	232.03	+	0.00	+	4.00
029 Vegetables & Fruit Juice	0.0058	192.16	191.62	189.97	+	0.28	+	1.15
030 Dried Fruits & Nuts	0.1733	218.45	218.45	221.30	+	0.00	-	1.29
031 Fruit Juices	0.3880	169.52	166.33	162.75	+	1.92	+	4.16
032 Vegetable Oils Refined	1.9242	165.54	164.58	159.34	+	0.58	+	3.89
033 Vegetable Ghee	1.5632	141.65	142.54	141.08	-	0.62	+	0.40
034 Oil Cakes	0.9611	219.35	207.80	169.06	+	5.56	+	29.75
035 Processed Liquid Milk	4.4437	222.76	219.13	208.43	+	1.66	+	6.88
036 Milk & Cream in Solid Form	0.0316	209.55	207.76	171.72	+	0.86	+	22.03
037 Ice Cream	0.0047	209.79	209.79	176.81	+	0.00	+	18.65
038 Dairy Products N.E.C	0.0117	230.41	228.17	212.62	+	0.98	+	8.37
039 Wheat Flour	2.3034	197.22	211.80	179.64	-	6.88	+	9.79
040 Other Cereal Flour	0.0604	139.33	140.44	170.46	-	0.79	-	18.26
041 Sugar Refined	1.7975	196.99	201.00	204.62	-	2.00	-	3.73
042 Chocolate	0.0139	99.19	99.19	99.19	+	0.00	+	0.00
043 Sugar Confectionary	0.0738	102.28	102.28	102.28	+	0.00	+	0.00
044 Coffee & Tea	0.7303	188.38	198.66	219.00	-	5.17	-	13.98
045 Spices	0.1449	191.65	191.57	238.45	+	0.04	-	19.63
046 Other Food Products	0.0336	293.22	308.98	314.63	-	5.10	-	6.80
047 Mineral Water	0.0207	185.23	184.22	171.58	+	0.55	+	7.96
048 Beverages	0.6303	164.58	161.66	139.24	+	1.81	+	18.20
049 Tobacco Products	1.2998	242.41	242.41	208.80	+	0.00	+	16.10
<b>Textiles &amp; Apparels</b>	<b>10.3289</b>	<b>193.05</b>	<b>192.99</b>	<b>190.09</b>	+	<b>0.03</b>	+	<b>1.56</b>
050 Cotton Yarn	5.2491	200.83	201.07	209.33	-	0.12	-	4.06
051 Nylon Yarn	0.1719	165.10	167.97	189.60	-	1.71	-	12.92
052 Blended Yarn	0.1689	191.86	193.66	198.67	-	0.93	-	3.43
053 Woven Fabrics	0.0128	226.82	226.82	208.98	+	0.00	+	8.54
054 Cotton Fabrics	0.6343	193.10	193.10	182.84	+	0.00	+	5.61
055 Other Fabrics	1.1016	194.43	192.36	172.31	+	1.08	+	12.84

## Annexure B: Wholesale Price Indices by Major Groups &amp; Commodities

(2007-2008=100)

Item and Specification	Weight	Index Numbers			% Change in May 2014 over	
		May 14	Apr 14	May 13	Apr 2014	May 2013
056 Silk & Reyon Fabrics	0.7350	165.85	165.36	157.86	+ 0.30	+ 5.06
057 Towels	0.1235	242.19	242.19	210.01	+ 0.00	+ 15.32
058 Blankets	0.0029	219.66	219.66	185.21	+ 0.00	+ 18.60
059 Bed Sheets	0.0913	242.12	242.12	212.73	+ 0.00	+ 13.82
060 Quilts	0.0019	172.42	172.42	153.32	+ 0.00	+ 12.46
061 Woolen Carpets	0.0383	113.69	113.69	106.55	+ 0.00	+ 6.70
062 Synthetic Carpets	0.0566	116.10	116.10	114.41	+ 0.00	+ 1.48
063 Hosiery Products	0.8832	198.64	196.90	185.14	+ 0.88	+ 7.29
064 Readymade Garments	1.0576	168.50	169.94	145.39	- 0.85	+ 15.90
<b>Leather Products</b>	<b>0.7115</b>	<b>218.42</b>	<b>228.06</b>	<b>137.06</b>	<b>- 4.23</b>	<b>+ 59.36</b>
065 Leather Without Hair	0.2973	212.68	203.40	115.62	+ 4.56	+ 83.95
066 Other Leather N.E.C	0.2567	276.72	314.19	160.40	- 11.93	+ 72.52
067 Footwears	0.1575	134.22	134.22	139.49	+ 0.00	- 3.78
<b>Other Transportable Goods</b>	<b>22.3659</b>	<b>212.29</b>	<b>213.45</b>	<b>201.98</b>	<b>- 0.54</b>	<b>+ 5.10</b>
068 Timber	0.0165	178.07	178.07	153.36	+ 0.00	+ 16.11
069 Printing Paper	0.4279	174.58	177.81	169.17	- 1.82	+ 3.20
070 Hard Board	0.1579	229.17	229.17	187.50	+ 0.00	+ 22.22
071 Coke	0.2797	163.45	163.45	163.45	+ 0.00	+ 0.00
072 Motor Spirit	1.5336	182.40	182.98	164.86	- 0.32	+ 10.64
073 Diesel Oil	5.2664	260.69	267.04	249.51	- 2.38	+ 4.48
074 Kerosine Oil	0.2151	288.01	288.01	251.08	+ 0.00	+ 14.71
075 Furnace Oil	3.2664	166.52	165.65	169.52	+ 0.53	- 1.77
076 Mobil Oil	0.7114	197.73	197.73	186.04	+ 0.00	+ 6.28
077 Chemicals	1.7720	176.24	176.47	159.30	- 0.13	+ 10.63
078 Dyeing Material	0.1539	143.77	143.77	107.23	+ 0.00	+ 34.08
079 Fertilizers	2.8657	265.61	264.50	260.13	+ 0.42	+ 2.11
080 Pesticides	0.2763	237.58	237.58	199.65	+ 0.00	+ 19.00
081 Insecticides	0.1276	178.94	177.92	123.02	+ 0.57	+ 45.46
082 Paints & Varnishes	0.1916	269.84	268.31	241.85	+ 0.57	+ 11.57
083 Medicines	1.1428	141.80	140.59	139.19	+ 0.86	+ 1.88
084 Soaps & Detergents	0.8168	182.20	181.82	174.25	+ 0.21	+ 4.56
085 Auto Tyres	0.2703	186.63	185.73	181.43	+ 0.48	+ 2.87
086 Plastic Products	0.4550	203.08	202.70	196.65	+ 0.19	+ 3.27
087 Glass sheets	0.2089	209.86	209.86	201.02	+ 0.00	+ 4.40
088 Other Glass Articles	0.1635	218.27	214.09	206.09	+ 1.95	+ 5.91
089 Ceramics & Sanitary Fixture	0.0244	199.50	199.50	161.77	+ 0.00	+ 23.32
090 Bricks, Blocks & Tiles	0.1566	196.15	197.05	184.29	- 0.46	+ 6.44
091 Cement	1.8145	207.98	207.45	189.16	+ 0.26	+ 9.95
092 Bed Foam	0.0006	149.67	149.67	144.33	+ 0.00	+ 3.70
093 Matches	0.0505	143.20	143.20	142.72	+ 0.00	+ 0.34
<b>Metal Product, Machinery &amp; Eq</b>	<b>8.7156</b>	<b>170.11</b>	<b>170.06</b>	<b>160.87</b>	<b>+ 0.03</b>	<b>+ 5.74</b>
094 Pig Iron	0.0593	128.97	128.97	128.97	+ 0.00	+ 0.00
095 Steel Bar & Sheets	1.4022	139.53	138.13	133.53	+ 1.01	+ 4.49
096 Pipe Fittings	0.0780	168.33	168.33	148.98	+ 0.00	+ 12.99
097 Steel Products	0.3879	170.24	170.24	166.25	+ 0.00	+ 2.40
098 Engines & Motors	0.0046	109.07	109.07	109.07	+ 0.00	+ 0.00
099 Vacuum Pumps	0.0155	115.39	115.39	115.39	+ 0.00	+ 0.00
100 Air Conditioners	0.0049	181.12	181.12	179.78	+ 0.00	+ 0.75
101 Cultivators	0.0551	226.90	226.90	189.23	+ 0.00	+ 19.91
102 Chuff Cutter	0.1293	149.20	149.20	144.94	+ 0.00	+ 2.94
103 Tractors	0.0028	214.54	214.54	161.96	+ 0.00	+ 32.46
104 Lathe Machines	0.0525	208.81	208.81	147.68	+ 0.00	+ 41.39
105 Concrete Mixture	0.0107	138.83	138.83	138.83	+ 0.00	+ 0.00
106 Fridge, WashM, SewM, Fans, Iron	1.1645	193.39	195.02	174.07	- 0.84	+ 11.10
107 Electric Wires	0.0912	179.18	178.73	160.12	+ 0.25	+ 11.90
108 Lighting Equipments	1.4431	164.95	164.75	147.94	+ 0.12	+ 11.50
109 Radio & Television	0.1843	126.49	126.49	126.49	+ 0.00	+ 0.00
110 Motor Vehicles	0.0244	182.59	182.75	173.75	- 0.09	+ 5.09
111 Motorcycles	0.2570	126.70	126.48	124.56	+ 0.17	+ 1.72
112 Bicycles	3.3483	182.84	182.84	178.81	+ 0.00	+ 2.25