



Monthly Review on Price Indices



March, 2014
(Base 2007-08)

Government of Pakistan
Statistics Division
Pakistan Bureau of Statistics
Islamabad

I. Inflation in Brief

1. CPI inflation, General, increased by 8.5% on year-on-year basis in March 2014 as compared to 7.9% in the previous month and by 6.6% in March 2013. On month-on-month basis, it increased by 1.0% in March 2014 as compared to a decrease of 0.3% in the previous month and increased by 0.4% in March 2013.
2. Core inflation measured by non-food non-energy CPI (Core NFNE) increased by 7.6% on (YoY) basis in March 2014 as compared to 7.8% in the previous month and by 9.0% in March 2013. On (MoM) basis, it increased by 0.3% in March 2014 as compared to 0.2% in the previous month and 0.4% in March 2013.
3. Core inflation, measured by 20% weighted trimmed mean CPI (Core Trimmed) increased by 8.1% on (YoY) basis in March 2014 as compared to 8.1% in the previous month and by 8.4% in March 2013. On (MoM) basis, it increased by 0.3% in March 2014 as compared to 0.2% in the previous month and by 0.2% in March 2013.
4. SPI inflation on YoY basis increased by 9.0% in March 2014 as compared to 7.5% a month earlier and 8.7% in March 2013. On MoM basis, it increased by 2.1% in March 2014 as compared to a decrease of 0.1% a month earlier and increased by 0.8% in March 2013.
5. WPI inflation on YoY basis increased by 7.7% in March 2014 as compared to 7.6% a month earlier and 7.9% in March 2013. WPI inflation on MoM basis increased by 0.3% in March 2014 as compared to a decrease of 0.1% a month earlier and increased by 0.3% in March 2013.
6. Figures 1 and 2 show graphically the data of Table 1. Table 1.1 shows "Period Average" and "YoY" percent changes in indices of three years.

Table 1: Inflation (%) (Base 2007-08)

Period	CPI						Core Inflation				SPI**		WPI	
	General		Food		Non-food		NFNE*		Trimmed		YoY	MoM	YoY	MoM
	YoY	MoM	YoY	MoM	YoY	MoM	YoY	MoM	YoY	MoM				
Feb 13	7.4	-0.3	7.4	-1.3	7.4	0.3	9.6	0.4	9.2	0.2	9.4	0.1	8.3	0.3
Mar 13	6.6	0.4	6.3	0.5	6.7	0.3	9.0	0.4	8.4	0.2	8.7	0.8	7.9	0.3
Apr 13	5.8	1.1	5.5	1.4	6.0	0.9	8.7	1.1	7.6	0.7	6.6	-0.3	6.8	0.8
May 13	5.1	0.5	6.5	1.1	4.1	0.1	8.1	0.3	6.7	0.3	6.8	0.1	4.1	-0.4
Jun 13	5.9	0.7	7.9	1.1	4.4	0.5	7.8	0.4	6.8	0.6	7.9	2.5	5.2	1.0
Jul 13	8.3	2.0	9.2	3.0	7.6	1.3	8.2	1.5	7.8	1.2	9.8	2.3	6.5	1.6
Aug 13	8.5	1.2	10.3	2.0	7.3	0.6	8.5	0.6	7.9	0.6	10.1	1.5	8.3	2.6
Sep 13	7.4	-0.3	7.9	-1.5	7.0	0.6	8.6	0.5	7.6	0.6	8.8	0.1	8.7	0.7
Oct 13	9.1	2.0	9.8	1.7	8.6	2.2	8.4	0.9	9.0	0.8	10.5	1.2	9.8	1.1
Nov 13	10.9	1.3	13.0	2.6	9.4	0.3	8.5	0.3	9.2	0.4	14.1	3.2	10.4	0.2
Dec 13	9.2	-1.3	9.3	-3.3	9.1	0.2	8.2	0.2	8.7	0.4	11.1	-2.5	8.9	-1.0
Jan 14	7.9	0.5	7.2	0.0 ¹	8.4	0.9	8.0	1.0	8.2	0.6	7.7	-1.2	8.1	0.5
Feb 14	7.9	-0.3	7.6	-1.0	8.2	0.2	7.8	0.2	8.1	0.2	7.5	-0.1	7.6	-0.1
Mar 14	8.5	1.0	9.3	2.1	8.0	0.2	7.6	0.3	8.1	0.3	9.0	2.1	7.7	0.3

*NFNE is non-food non-energy,

** SPI for quintile 1

¹ Actual figure is -0.04, displayed in rounded figure

Table 1.1 : Period Average and YoY % Changes of Indices (Base 2007-08)

Index	Averages July-March % Changes			March over March % Changes		
	2013-14	2012-13	2011-12	2013-14	2012-13	2011-12
CPI	8.64	7.98	10.79	8.53	6.57	10.79
SPI	9.83	8.00	6.62	8.98	8.65	6.09
WPI	8.43	8.05	12.17	7.68	7.89	4.47

Figure 1: CPI Inflation YoY, Special Indices

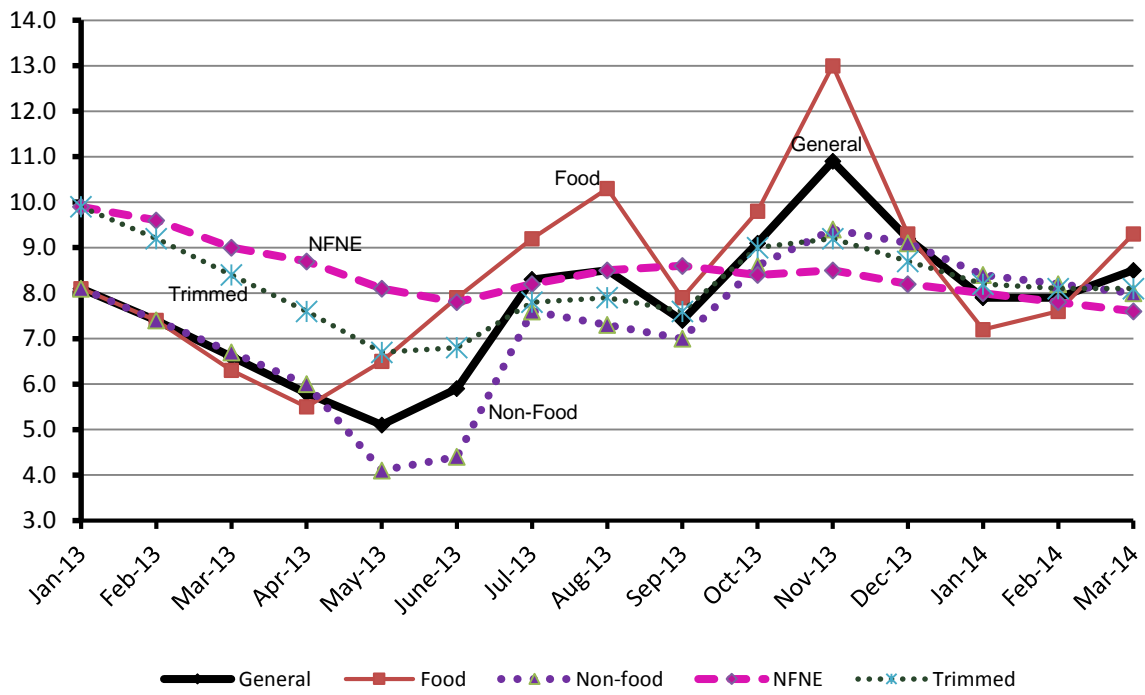
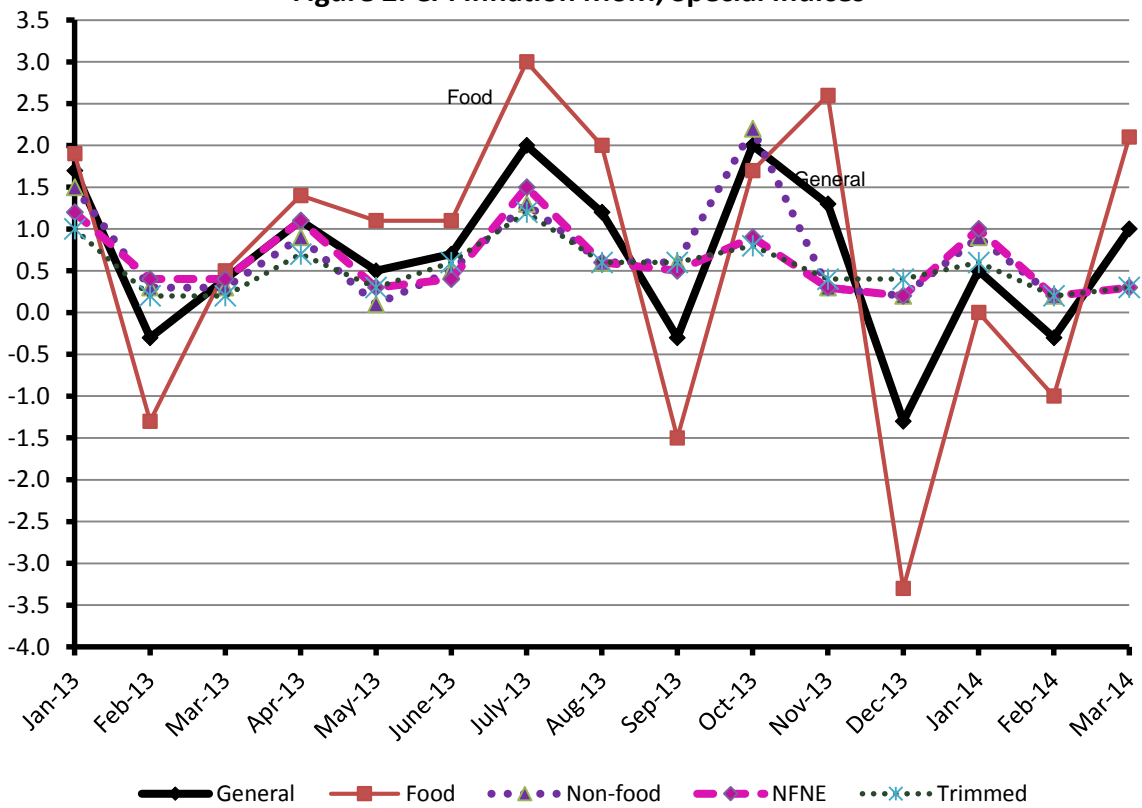


Figure 2: CPI Inflation MoM, Special Indices



II. Consumer Price Index (CPI)

The Consumer Price Index of March, 2014 has increased by 0.96% over Feb, 2014 and increased by 8.53% over corresponding month of the last year, i.e. March 2013.

Table 2 : Consumer Price Index by Group of Commodities and Services (Base 2007-08)

No	Group	Group Weight (%)	Indices			% Change Mar 2014 over		Impact (In % points) Mar 2014 Over	
			Mar 2014	Feb 2014	Mar 2013	Feb 2014	Mar 2013	Feb 2014	Mar 2013
	General	100.00	190.82	189.00	175.82	0.96	8.53	0.96	8.53
1.	Food & Non-alcoholic Bev.	34.83	211.97	207.34	194.76	2.23	8.84	0.85	3.41
	<i>Non-perishable Food Items</i>	29.84	214.15	211.97	197.57	1.03	8.39	0.34	2.81
	<i>Perishable Food Items</i>	4.99	198.94	179.61	177.97	10.76	11.78	0.51	0.60
2.	Alcoholic Bev. & Tobacco	1.41	221.82	221.77	191.16	0.02	16.04	0.00	0.25
3.	Clothing & Footwear	7.57	200.29	199.16	179.42	0.57	11.63	0.05	0.90
4.	Housing, Water, Electricity, Gas & Fuels	29.41	166.99	166.96	152.91	0.02	9.21	0.00	2.35
5.	Furnishing & Household Equipment Maintenance	4.21	198.85	197.91	182.47	0.47	8.98	0.02	0.39
6.	Health	2.19	169.93	167.50	158.49	1.45	7.22	0.03	0.14
7.	Transport	7.20	196.22	197.33	189.12	-0.56	3.75	-0.04	0.29
8.	Communication	3.22	129.85	129.81	128.63	0.02	0.94	0.00	0.02
9.	Recreation & Culture	2.02	183.72	183.42	170.63	0.16	7.67	0.00	0.15
10.	Education	3.94	168.53	168.48	157.68	0.03	6.88	0.00	0.24
11.	Restaurants & Hotels	1.23	235.52	233.32	208.05	0.94	13.20	0.01	0.19
12.	Miscellaneous	2.76	214.42	212.47	202.64	0.92	5.81	0.03	0.18

Main contributors to month-on-month and year-on-year percentage changes are given below and detail is given in Annexure A.

1. **Month-on-month** Top few commodities which varied from previous month i.e. February 2014 are given below:-

Food Items Increased: Tomatoes (53.32%), Potatoes (39.17%), Eggs (15.29%), Fresh Fruits (9.28%), Pulse Moong (6.31%), Chicken (6.11%), Sugar (4.21%), Fish (2.79%), Pulse Masoor (2.44%), Betel Leaves & Nuts (1.53%), Pulse Mash (1.29%), Vegetable Ghee (1.22%), Wheat (1.16%), Condiments (1.06%), and Wheat Flour (1.03%).

Decreased: Tea (3.49%), Besan (1.12%), Mustard Oil (0.09%), and Gram Whole (0.08%).

Non-food Items Increased: Doctor (MBBS) Clinic Fee (2.16%), Personal Equipments (1.51%), Newspapers (1.43%), Drugs & Medicines (1.30%), Cosmetics (1.25%), Cotton Cloth (1.22%), and Dopatta (0.97%).

Decreased: Motor Fuel (1.48%), Firewood Whole (0.16%), and Woolen Readymade Garments (0.09%).

2. **Year-on-year:** Top few commodities which varied from previous year i.e. March 2013 are given below:-

Food Items Increased: Potatoes (93.20%), Chicken (27.25%), Eggs (26.14%), Pulse Moong (25.78%), Pulse Masoor (22.73%), Fresh Vegetables (21.85%), Wheat (19.20%), Wheat Products (18.35%), Wheat Flour (17.99%), Cigarettes (16.20%), Beans (13.71%), and Readymade Food (13.20%).

Decreased: Besan (23.34%), Tomatoes (21.56%), Pulse Gram (20.95%), Gram Whole (15.73%), Onions (10.29%), Tea (3.51%), Spices (3.16%) and Mustard Oil (1.99%).

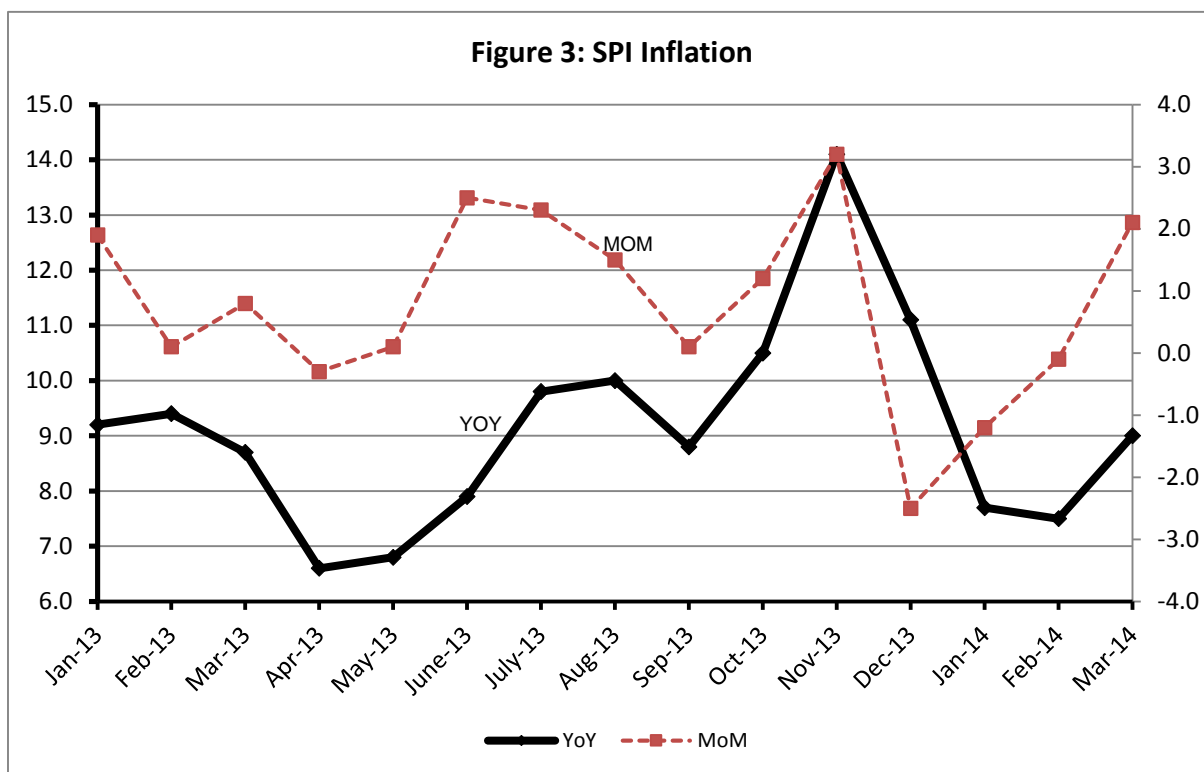
Non-food Items Increased: Postal Service (23.66%), Cosmetics (19.83%), Electricity (15.82%), Sewing Needle & Dry Cell (15.80%), Doctor (MBBS) Clinic Fee (14.79%), Cotton Cloth (13.40%), Woolen Readymade Garments (13.38%), Tailoring (12.95%), Text Books (12.04%) and Utensils (11.53%).

III. Sensitive Price Indicator

Quintile-wise percentage changes YoY and MoM are given below in Table 3. The series from January 2013 to March 2014 is also graphed below in Figure 3.

Table 3 : Sensitive Price Indicator (Base 2007-08)

Quintiles	Indices			% Change Mar 2014 over	
	Mar 2014	Feb 2014	Mar 2013	Feb 2014	Mar 2013
1	203.77	199.49	186.98	2.15	8.98
2	209.24	205.11	192.97	2.01	8.43
3	212.77	208.79	191.50	1.91	11.11
4	214.61	210.92	192.74	1.75	11.35
5	213.12	210.16	193.02	1.41	10.41
Combined	212.08	208.54	192.01	1.70	10.45



IV. Wholesale Price Index

The Wholesale Price Index for March 2014 increased by 0.34% over February 2014 and by 7.68% over the corresponding month of the last year, i.e. March, 2013. YoY and MoM movements, from January 2013 to March 2014 are also graphed below in Figure 4.

Table 4 : Wholesale Price Index by Group of Commodities (Base 2007-08)									
No.	Group	Group Weight (%)	Indices			% Change Mar 2014 over		Impact (in %age points) Mar 2014 over	
			Mar 2014	Feb 2014	Mar 2013	Feb 2014	Mar 2013	Feb 2014	Mar 2013
	General	100.00	211.66	210.94	196.57	0.34	7.68	0.34	7.68
1.	Agriculture, Forestry & Fishery Products	25.77	217.63	214.62	199.84	1.40	8.90	0.37	2.33
2.	Ores & Minerals, Electricity, Gas & Water	12.04	243.45	243.36	214.54	0.04	13.48	0.01	1.77
3.	Food Products, Beverages & Tobacco, Textiles, Apparel & Leather Products	31.11	201.93	201.73	190.65	0.10	5.92	0.03	1.79
	i. Food Products, Bev. & Tobacco	20.07	205.40	202.61	193.18	1.38	6.33	0.27	1.25
	ii. Textiles and Apparel	10.33	192.57	197.85	190.53	-2.67	1.07	-0.26	0.11
	iii. Leather Products	0.71	239.85	233.33	120.99	2.79	98.24	0.02	0.43
4.	Other Transportable Goods except Metal Products, Machinery & Equipments	22.37	217.63	218.22	206.04	-0.27	5.63	-0.06	1.32
5.	Metal Products, Machinery & Equipment	8.72	169.53	169.45	158.87	0.04	6.71	0.00	0.47

Main contributors to month-on-month and year-on-year percentage changes are given below and detail is given in Annexure B.

1. **Month-on-month** Top few commodities which varied from previous month i.e. February, 2014 are given below:-

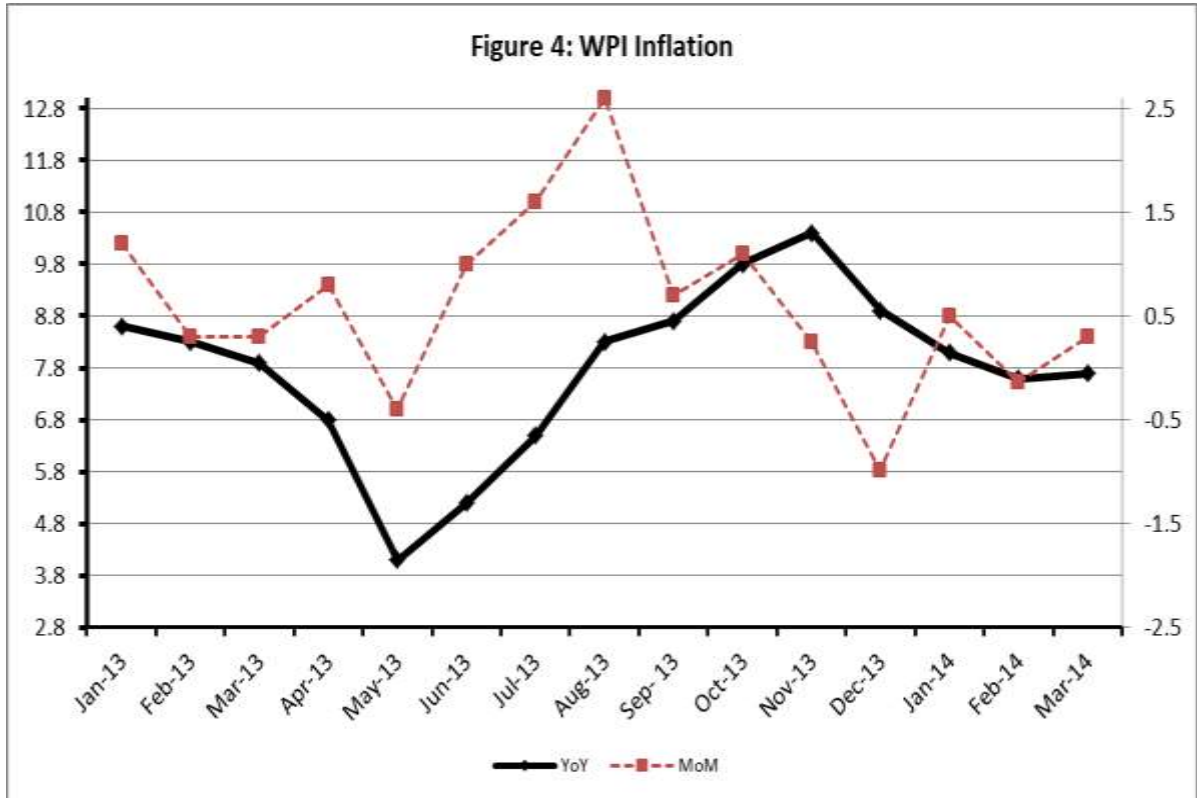
Increased: Potatoes (26.69%), Leather Without Hair (24.86%), Eggs (18.93%), Fresh Fruits (8.71%), Poultry (8.68%), Vegetables (6.30%), Pesticides (5.30%), Jowar & Sugar (4.31% each), Printing Paper (3.69%), Stimulants & Spice Crops (3.56%) and Cotton Seeds (3.22%).

Decreased: Cotton Yarn (4.91%) and Fibre Crops (3.13%)

2. **Year-on-year** Top few commodities which varied from previous year i.e. March, 2013 are given below:-

Increased: Other Leather N.E.C (177.32%), Potatoes (130.11%), Leather without hair (90.66%), Stimulants and Spice Crops (88.01%), Lathe Machine (41.39%) and Poultry (37.11%).

Decreased: Spices (28.22%) and Other Cereal Flour (24.38%).



Annexure A: Consumer Price Index Numbers by Commodity Groups & Commodities (2007-2008=100)

Item and Specification	Weight	Index Numbers			% Change in Mar 2014 over	
		Mar 14	Feb 14	Mar 13	Feb 2014	Mar 2013
General	100.0000	190.82	189.00	175.82	+ 0.96	+ 8.53
Food & Non-alcoholic Beverage	34.8343	211.97	207.34	194.76	+ 2.23	+ 8.84
01 Wheat	0.3477	238.50	235.76	200.08	+ 1.16	+ 19.20
02 Wheat Flour	4.1648	235.61	233.21	199.68	+ 1.03	+ 17.99
03 Wheat Product	0.0959	224.47	222.86	189.66	+ 0.72	+ 18.35
04 Besan	0.1500	172.71	174.67	225.29	- 1.12	- 23.34
05 Rice	1.5821	194.31	194.21	182.08	+ 0.05	+ 6.72
06 Cereals	0.1563	233.06	232.00	212.48	+ 0.46	+ 9.69
07 Bakery & Confectionary	1.1550	201.00	200.07	180.71	+ 0.46	+ 11.23
08 Nimco	0.4574	224.39	222.25	201.85	+ 0.96	+ 11.17
09 Meat	2.4303	235.42	233.63	220.01	+ 0.77	+ 7.00
10 Chicken	1.3596	203.37	191.66	159.82	+ 6.11	+ 27.25
11 Fish	0.2970	218.54	212.60	199.17	+ 2.79	+ 9.73
12 Milk Fresh	6.6800	234.51	234.51	220.22	+ 0.00	+ 6.49
13 Milk Products	0.6338	229.24	228.79	211.92	+ 0.20	+ 8.17
14 Milk Powder	0.1129	208.19	206.77	186.98	+ 0.69	+ 11.34
15 Eggs	0.4555	238.24	206.65	188.87	+ 15.29	+ 26.14
16 Mustard Oil	0.0952	159.32	159.46	162.55	- 0.09	- 1.99
17 Cooking Oil	1.7538	162.30	162.25	161.13	+ 0.03	+ 0.73
18 Vegetable Ghee	2.0714	160.38	158.45	157.29	+ 1.22	+ 1.96
19 Dry Fruits	0.2543	232.50	231.00	213.13	+ 0.65	+ 9.09
20 Fresh Fruits	1.8649	192.09	175.77	181.99	+ 9.28	+ 5.55
21 Pulse Masoor	0.2712	178.99	174.73	145.84	+ 2.44	+ 22.73
22 Pulse Moong	0.2336	278.78	262.23	221.64	+ 6.31	+ 25.78
23 Pulse Mash (Washed)	0.2098	195.09	192.61	190.74	+ 1.29	+ 2.28
24 Pulse Gram	0.2361	171.73	170.92	217.25	+ 0.47	- 20.95
25 Gram Whole	0.1616	178.82	178.96	212.21	- 0.08	- 15.73
26 Beans	0.0269	247.84	246.35	217.96	+ 0.60	+ 13.71
27 Potatoes	0.4914	270.62	194.45	140.07	+ 39.17	+ 93.20
28 Onion	0.5555	203.21	201.79	226.51	+ 0.70	- 10.29
29 Tomatoes	0.4634	166.63	108.68	212.43	+ 53.32	- 21.56
30 Fresh Vegetables	1.6157	192.85	191.66	158.27	+ 0.62	+ 21.85
31 Sugar	1.0445	192.40	184.62	188.76	+ 4.21	+ 1.93
32 Gur	0.0220	242.61	240.68	218.79	+ 0.80	+ 10.89
33 Honey	0.0446	277.48	276.11	256.26	+ 0.50	+ 8.28
34 SweetMeat	0.2483	224.66	224.53	208.42	+ 0.06	+ 7.79
35 Beverages	1.1990	189.90	188.24	174.11	+ 0.88	+ 9.07
36 Jam, Tomato Ketchup & Pickles	0.2454	192.31	191.94	181.88	+ 0.19	+ 5.73
37 Condiments	0.2656	235.12	232.66	215.06	+ 1.06	+ 9.33
38 Spices	0.5441	219.45	218.41	226.61	+ 0.48	- 3.16
39 Tea	0.8377	227.06	235.26	235.31	- 3.49	- 3.51
Alcoholic Beverages, Tobacco	1.4135	221.82	221.77	191.16	+ 0.02	+ 16.04
40 Cigarettes	1.3906	222.30	222.30	191.31	+ 0.00	+ 16.20
41 Betel Leaves & Nuts	0.0229	192.37	189.48	182.09	+ 1.53	+ 5.65
Clothing & Footwear	7.5708	200.29	199.16	179.42	+ 0.57	+ 11.63
42 Cotton Cloth	1.7286	187.29	185.04	165.16	+ 1.22	+ 13.40
43 Woolen Cloth	0.8759	223.23	221.76	201.30	+ 0.66	+ 10.89
44 Readymade Garments	0.9739	199.09	198.34	178.55	+ 0.38	+ 11.50
45 Woolen Readymade Garments	0.3964	218.34	218.53	192.57	- 0.09	+ 13.38
46 Hosiery	0.5094	210.64	209.41	189.51	+ 0.59	+ 11.15
47 Dopatta	0.4412	218.65	216.55	197.36	+ 0.97	+ 10.79
48 Cleaning and Laundry	0.2110	222.23	221.48	200.53	+ 0.34	+ 10.82
49 Tailoring	0.8840	240.93	239.91	213.30	+ 0.43	+ 12.95
50 Footwear	1.5504	163.18	163.10	149.55	+ 0.05	+ 9.11

Annexure A: Consumer Price Index Numbers by Commodity Groups & Commodities (2007-2008=100)

Item and Specification	Weight	Index Numbers			% Change in Mar 2014 over	
		Mar 14	Feb 14	Mar 13	Feb 2014	Mar 2013
Housing, Water, Elec., Gas, Other	29.4149	166.99	166.96	152.91	+ 0.02	+ 9.21
51 House Rent	21.8149	153.82	153.82	142.46	+ 0.00	+ 7.97
52 Construction Input Items	0.5623	227.61	226.50	206.83	+ 0.49	+ 10.05
53 Construction Wage Rates	0.3331	193.88	193.28	176.59	+ 0.31	+ 9.79
54 Water Supply	0.4971	149.92	149.57	138.79	+ 0.23	+ 8.02
55 Electricity	4.3985	227.44	227.44	196.37	+ 0.00	+ 15.82
56 Gas	1.5756	143.81	143.81	142.58	+ 0.00	+ 0.86
57 Kerosene Oil	0.0057	295.11	294.98	277.05	+ 0.04	+ 6.52
58 Firewood Whole	0.2277	266.51	266.95	246.28	- 0.16	+ 8.21
Furnished H.Hold Equip.& Hous	4.2082	198.85	197.91	182.47	+ 0.47	+ 8.98
59 Furniture	0.3315	190.75	189.87	173.02	+ 0.46	+ 10.25
60 Household Textiles	0.6489	197.21	196.78	178.21	+ 0.22	+ 10.66
61 Household Equipment	0.5936	167.61	166.76	159.14	+ 0.51	+ 5.32
62 Utensils	0.3212	200.51	199.46	179.78	+ 0.53	+ 11.53
63 Plastic Products	0.2547	192.33	191.61	177.87	+ 0.38	+ 8.13
64 Washing Soaps & Detergents	0.7893	216.51	215.60	198.55	+ 0.42	+ 9.05
65 Sewing Needle & Dr Cell	0.1496	176.49	176.33	152.41	+ 0.09	+ 15.80
66 Household Servant	1.0432	210.10	208.60	194.63	+ 0.72	+ 7.95
67 Marriage Hall Charges	0.0762	213.24	212.59	194.52	+ 0.31	+ 9.62
Health	2.1868	169.93	167.50	158.49	+ 1.45	+ 7.22
68 Drugs & Medicines	1.2667	144.13	142.28	140.18	+ 1.30	+ 2.82
69 Medical Equipments	0.0080	210.51	210.38	201.89	+ 0.06	+ 4.27
70 Doctor (MBBS) Clinic Fee	0.5904	226.12	221.33	196.98	+ 2.16	+ 14.79
71 Medical Tests	0.3217	167.41	166.95	158.83	+ 0.28	+ 5.40
Transport	7.2023	196.22	197.33	189.11	- 0.56	+ 3.76
72 Motor Vehicles	0.6630	162.83	162.60	155.51	+ 0.14	+ 4.71
73 Motor Vehicle Accessories	0.2439	223.52	223.06	212.43	+ 0.21	+ 5.22
74 Motor Fuel	3.0269	190.67	193.53	182.54	- 1.48	+ 4.45
75 Mechanical Service	0.4552	201.85	201.06	186.18	+ 0.39	+ 8.42
76 Motor Vehicle Tax	0.1099	153.74	153.74	153.74	+ 0.00	+ 0.00
77 Transport Services	2.7034	208.93	208.93	204.54	+ 0.00	+ 2.15
Communication	3.2198	129.85	129.82	128.63	+ 0.02	+ 0.95
78 Postal Services	0.0662	215.89	215.89	174.59	+ 0.00	+ 23.66
79 Communication & Apparatus	3.1536	128.04	128.01	127.66	+ 0.02	+ 0.30
Recreation & Culture	2.0227	183.72	183.42	170.63	+ 0.16	+ 7.67
80 Recreation & Culture	0.8634	126.95	126.96	122.28	- 0.01	+ 3.82
81 Text Books	0.5706	267.10	267.10	238.40	+ 0.00	+ 12.04
82 Newspapers	0.1934	175.42	172.95	170.49	+ 1.43	+ 2.89
83 Stationery	0.3953	191.42	191.07	178.51	+ 0.18	+ 7.23
Education	3.9431	168.53	168.48	157.68	+ 0.03	+ 6.88
84 Education	3.9431	168.53	168.48	157.68	+ 0.03	+ 6.88
Restaurants & Hotels	1.2286	235.52	233.32	208.05	+ 0.94	+ 13.20
85 Readymade Food	1.2286	235.52	233.32	208.05	+ 0.94	+ 13.20
Miscellaneous Goods & Service	2.7550	214.42	212.47	202.64	+ 0.92	+ 5.81
86 Personal Care	1.4935	196.15	195.35	182.97	+ 0.41	+ 7.20
87 Cosmetics	0.3853	180.22	178.00	150.40	+ 1.25	+ 19.83
88 Blades	0.0322	182.56	182.25	174.26	+ 0.17	+ 4.76
89 Personal Equipments	0.8440	263.58	259.66	262.37	+ 1.51	+ 0.46

Annexure B: Wholesale Price Indices by Major Groups & Commodities (2007-2008=100)

Item and Specification	Weight	Index Numbers			% Change in Mar 2014 over			
		Mar 14	Feb 14	Mar 13	Feb 2014	Mar 2013		
General	100.0000	211.66	210.94	196.57	+	0.34	+	7.68
Agriculture Forestry & Fisher	25.7674	217.63	214.62	199.84	+	1.40	+	8.90
001 Wheat	0.6297	250.86	246.93	207.41	+	1.59	+	20.95
002 Maize	0.6764	180.57	178.62	182.35	+	1.09	-	0.98
003 Rice	2.4413	178.17	177.64	167.72	+	0.30	+	6.23
004 Sorghum / Jowar	0.0214	289.35	277.39	223.15	+	4.31	+	29.67
005 Millet / Bajra	0.0374	174.91	171.25	175.35	+	2.14	-	0.25
006 Vegetables	1.2441	195.18	183.62	170.90	+	6.30	+	14.21
007 Fresh Fruits	1.5144	213.00	195.94	205.38	+	8.71	+	3.71
008 Dry Fruits	0.2478	207.33	205.28	184.10	+	1.00	+	12.62
009 Cotton Seeds	1.1511	197.27	191.11	166.12	+	3.22	+	18.75
010 Other Oil Seeds	0.0722	183.71	183.54	172.68	+	0.09	+	6.39
011 Edible Roots / Potatoes	0.2540	288.60	227.80	125.42	+	26.69	+	130.11
012 Stimulant & Spice Crops	0.1634	355.25	343.03	188.95	+	3.56	+	88.01
013 Pulses	0.4901	191.54	189.21	193.65	+	1.23	-	1.09
014 Sugar Crops	1.0725	267.92	267.92	267.92	+	0.00	+	0.00
015 Fibre Crops	5.3169	217.76	224.80	215.82	-	3.13	+	0.90
016 Unmanufactured Tobacco	0.0742	190.00	189.53	175.15	+	0.25	+	8.48
017 Poultry	0.5633	210.42	193.61	153.47	+	8.68	+	37.11
018 Raw Milk from Bovine Animals	7.0279	226.49	224.56	212.51	+	0.86	+	6.58
019 Eggs	0.5034	246.39	207.17	195.37	+	18.93	+	26.11
020 Raw Animal Materials / Wool	0.0351	157.45	158.40	137.58	-	0.60	+	14.44
021 Hides & Fur Skins, Raw	0.4834	147.11	146.68	140.54	+	0.29	+	4.67
022 Fuel Wood in Logs	0.0179	242.82	241.73	220.21	+	0.45	+	10.27
023 Fish Live Fresh or Chilled	1.7295	244.62	244.62	197.25	+	0.00	+	24.02
Ores/Minerals, Elec., Gas & W	12.0389	243.45	243.36	214.54	+	0.04	+	13.48
024 Coal not Agglomerated	0.7508	223.53	223.53	223.53	+	0.00	+	0.00
025 Natural Gas Liquified	5.7385	204.10	203.90	202.57	+	0.10	+	0.76
026 Salt & Pure Sodium Chloride	0.0584	231.42	231.42	187.29	+	0.00	+	23.56
027 Electrical Energy	5.4912	287.44	287.44	226.10	+	0.00	+	27.13
Food, Beverages, Tobacco, Textil	31.1122	201.93	201.73	190.65	+	0.10	+	5.92
Food Products, Beverages &	20.0718	205.40	202.61	193.18	+	1.38	+	6.33
028 Meat of Animals	3.4559	240.41	240.41	230.45	+	0.00	+	4.32
029 Vegetables & Fruit Juice	0.0058	191.62	193.91	189.33	-	1.18	+	1.21
030 Dried Fruits & Nuts	0.1733	218.74	218.89	222.50	-	0.07	-	1.69
031 Fruit Juices	0.3880	166.09	166.02	158.79	+	0.04	+	4.60
032 Vegetable Oils Refined	1.9242	164.69	161.68	159.62	+	1.86	+	3.18
033 Vegetable Ghee	1.5632	144.11	140.94	140.73	+	2.25	+	2.40
034 Oil Cakes	0.9611	198.60	193.86	164.73	+	2.45	+	20.56
035 Processed Liquid Milk	4.4437	215.66	210.94	208.43	+	2.24	+	3.47
036 Milk & Cream in Solid Form	0.0316	207.17	207.03	171.22	+	0.07	+	21.00
037 Ice Cream	0.0047	209.79	209.79	173.49	+	0.00	+	20.92
038 Dairy Products N.E.C	0.0117	223.27	218.81	210.68	+	2.04	+	5.98
039 Wheat Flour	2.3034	217.42	214.84	182.24	+	1.20	+	19.30
040 Other Cereal Flour	0.0604	138.58	141.77	183.27	-	2.25	-	24.38
041 Sugar Refined	1.7975	201.11	192.80	196.65	+	4.31	+	2.27
042 Chocolate	0.0139	99.19	99.19	99.19	+	0.00	+	0.00
043 Sugar Confectionary	0.0738	102.28	102.28	102.28	+	0.00	+	0.00
044 Coffee & Tea	0.7303	208.86	213.04	212.31	-	1.96	-	1.62
045 Spices	0.1449	191.41	191.33	266.67	+	0.04	-	28.22
046 Other Food Products	0.0336	308.40	308.48	319.06	-	0.03	-	3.34
047 Mineral Water	0.0207	183.04	181.84	168.32	+	0.66	+	8.75
048 Beverages	0.6303	155.31	152.12	137.86	+	2.10	+	12.66
049 Tobacco Products	1.2998	242.41	242.41	208.80	+	0.00	+	16.10
Textiles & Apparels	10.3289	192.57	197.85	190.53	-	2.67	+	1.07
050 Cotton Yarn	5.2491	207.32	218.02	215.58	-	4.91	-	3.83
051 Nylon Yarn	0.1719	177.75	179.07	185.28	-	0.74	-	4.06
052 Blended Yarn	0.1689	199.15	201.29	199.23	-	1.06	-	0.04
053 Woven Fabrics	0.0128	226.82	226.82	208.98	+	0.00	+	8.54
054 Cotton Fabrics	0.6343	189.65	187.77	174.17	+	1.00	+	8.89

Annexure B: Wholesale Price Indices by Major Groups & Commodities (2007-2008=100)

Item and Specification	Weight	Index Numbers			% Change in Mar 2014 over		
		Mar 14	Feb 14	Mar 13	Feb 2014	Mar 2013	
055 Other Fabrics	1.1016	179.75	179.06	165.62	+	0.39	+ 8.53
056 Silk & Reyon Fabrics	0.7350	161.09	161.09	154.21	+	0.00	+ 4.46
057 Towels	0.1235	234.25	234.25	203.06	+	0.00	+ 15.36
058 Blankets	0.0029	219.66	219.66	185.21	+	0.00	+ 18.60
059 Bed Sheets	0.0913	236.05	236.05	208.11	+	0.00	+ 13.43
060 Quilts	0.0019	172.42	172.42	153.32	+	0.00	+ 12.46
061 Woolen Carpets	0.0383	113.69	113.69	106.55	+	0.00	+ 6.70
062 Synthetic Carpets	0.0566	116.10	116.10	114.41	+	0.00	+ 1.48
063 Hosiery Products	0.8832	195.50	195.18	181.47	+	0.16	+ 7.73
064 Readymade Garments	1.0576	153.12	153.12	138.19	+	0.00	+ 10.80
Leather Products	0.7115	239.85	233.33	120.99	+	2.79	+ 98.24
065 Leather Without Hair	0.2973	209.40	167.71	109.83	+	24.86	+ 90.66
066 Other Leather N.E.C	0.2567	339.91	370.13	122.57	-	8.16	+ 177.32
067 Footwears	0.1575	134.22	134.22	139.49	+	0.00	- 3.78
Other Transportable Goods	22.3659	217.63	218.22	206.04	-	0.27	+ 5.63
068 Timber	0.0165	174.55	174.55	152.79	+	0.00	+ 14.24
069 Printing Paper	0.4279	176.01	169.75	166.52	+	3.69	+ 5.70
070 Hard Board	0.1579	229.17	229.17	187.50	+	0.00	+ 22.22
071 Coke	0.2797	163.45	163.45	163.45	+	0.00	+ 0.00
072 Motor Spirit	1.5336	185.89	190.50	172.73	-	2.42	+ 7.62
073 Diesel Oil	5.2664	279.46	279.46	261.36	+	0.00	+ 6.93
074 Kerosine Oil	0.2151	288.01	288.01	264.94	+	0.00	+ 8.71
075 Furnace Oil	3.2664	177.75	182.18	178.20	-	2.43	- 0.25
076 Mobil Oil	0.7114	194.41	193.09	187.12	+	0.68	+ 3.90
077 Chemicals	1.7720	175.87	171.72	156.83	+	2.42	+ 12.14
078 Dyeing Material	0.1539	107.55	107.55	107.23	+	0.00	+ 0.30
079 Fertilizers	2.8657	264.50	267.25	261.17	-	1.03	+ 1.28
080 Pesticides	0.2763	237.58	225.62	197.49	+	5.30	+ 20.30
081 Insecticides	0.1276	136.47	136.69	122.97	-	0.16	+ 10.98
082 Paints & Varnishes	0.1916	268.31	268.31	236.93	+	0.00	+ 13.24
083 Medicines	1.1428	140.31	139.69	139.93	+	0.44	+ 0.27
084 Soaps & Detergents	0.8168	181.82	181.22	168.46	+	0.33	+ 7.93
085 Auto Tyres	0.2703	185.73	185.73	181.47	+	0.00	+ 2.35
086 Plastic Products	0.4550	202.33	202.33	192.40	+	0.00	+ 5.16
087 Glass sheets	0.2089	207.75	207.75	192.74	+	0.00	+ 7.79
088 Other Glass Articles	0.1635	214.09	214.09	198.72	+	0.00	+ 7.73
089 Ceramics & Sanitary Fixture	0.0244	194.56	192.64	161.77	+	1.00	+ 20.27
090 Bricks, Blocks & Tiles	0.1566	195.96	195.96	177.53	+	0.00	+ 10.38
091 Cement	1.8145	207.69	207.30	188.35	+	0.19	+ 10.27
092 Bed Foam	0.0006	149.67	149.67	142.83	+	0.00	+ 4.79
093 Matches	0.0505	143.20	143.20	133.50	+	0.00	+ 7.27
Metal Product, Machinery & Eq	8.7156	169.52	169.45	158.87	+	0.04	+ 6.70
094 Pig Iron	0.0593	128.97	128.97	128.97	+	0.00	+ 0.00
095 Steel Bar & Sheets	1.4022	138.60	139.12	132.16	-	0.37	+ 4.87
096 Pipe Fittings	0.0780	168.33	168.33	141.71	+	0.00	+ 18.78
097 Steel Products	0.3879	170.24	170.19	161.94	+	0.03	+ 5.13
098 Engines & Motors	0.0046	109.07	109.07	109.07	+	0.00	+ 0.00
099 Vacuum Pumps	0.0155	115.39	115.39	115.39	+	0.00	+ 0.00
100 Air Conditioners	0.0049	181.12	181.12	172.67	+	0.00	+ 4.89
101 Cultivators	0.0551	226.90	226.90	189.23	+	0.00	+ 19.91
102 Chuff Cutter	0.1293	149.20	144.94	144.94	+	2.94	+ 2.94
103 Tractors	0.0028	193.29	193.29	161.96	+	0.00	+ 19.34
104 Lathe Machines	0.0525	208.81	208.81	147.68	+	0.00	+ 41.39
105 Concrete Mixture	0.0107	138.83	138.83	138.83	+	0.00	+ 0.00
106 Fridge, WashM, SewM, Fans, Iron	1.1645	192.37	192.33	167.15	+	0.02	+ 15.09
107 Electric Wires	0.0912	178.73	178.73	159.57	+	0.00	+ 12.01
108 Lighting Equipments	1.4431	163.27	162.86	148.26	+	0.25	+ 10.12
109 Radio & Television	0.1843	126.49	126.49	126.49	+	0.00	+ 0.00
110 Motor Vehicles	0.0244	184.47	182.16	173.75	+	1.27	+ 6.17
111 Motorcycles	0.2570	126.15	125.69	125.07	+	0.37	+ 0.86
112 Bicycles	3.3483	182.84	182.84	177.09	+	0.00	+ 3.25