



Monthly Review on Price Indices



June, 2014
(Base 2007-08)

Government of Pakistan
Statistics Division
Pakistan Bureau of Statistics
Islamabad

I. Inflation in Brief

1. CPI inflation, General, increased by 8.2% on year-on-year basis in June 2014 as compared to 8.3% in the previous month and by 5.9% in June 2013. On month-on-month basis, it increased by 0.6% in June 2014 as compared to a decrease of 0.3% in the previous month and increased by 0.7% in June 2013.
2. Core inflation measured by non-food non-energy CPI (Core NFNE) increased by 8.7% on (YoY) basis in June 2014 as compared to 8.7% in the previous month and by 7.8% in June 2013. On (MoM) basis, it increased by 0.4% in June 2014 as compared to 0.5% in the previous month and 0.4% in June 2013.
3. Core inflation, measured by 20% weighted trimmed mean CPI (Core Trimmed) increased by 7.9% on (YoY) basis in June 2014 as compared to 8.3% in the previous month and by 6.8% in June 2013. On (MoM) basis, it increased by 0.3% in June 2014 as compared to 0.3% in the previous month and by 0.6% in June 2013.
4. SPI inflation on YoY basis increased by 6.2% in June 2014 as compared to 7.7% a month earlier and 7.9% in June 2013. On MoM basis, it increased by 1.1% in June 2014 as compared to a decrease of 1.5% a month earlier and increased by 2.5% in June 2013.
5. WPI inflation on YoY basis increased by 7.7% in June 2014 as compared to 7.3% a month earlier and 5.2% in June 2013. WPI inflation on MoM basis increased by 1.4% in June 2014 as compared to a decrease of 0.1% a month earlier and increased by 1.0% in June 2013.
6. Figures 1 and 2 show graphically the data of Table 1. Table 1.1 shows "Period Average" and "YoY" percent changes in indices of three years.

Table 1: Inflation (%) (Base 2007-08)														
Period	CPI						Core Inflation				SPI**		WPI	
	General		Food		Non-food		NFNE*		Trimmed		YoY	MoM	YoY	MoM
	YoY	MoM	YoY	MoM	YoY	MoM	YoY	MoM	YoY	MoM				
May 13	5.1	0.5	6.5	1.1	4.1	0.1	8.1	0.3	6.7	0.3	6.8	0.1	4.1	-0.4
Jun 13	5.9	0.7	7.9	1.1	4.4	0.5	7.8	0.4	6.8	0.6	7.9	2.5	5.2	1.0
Jul 13	8.3	2.0	9.2	3.0	7.6	1.3	8.2	1.5	7.8	1.2	9.8	2.3	6.5	1.6
Aug 13	8.5	1.2	10.3	2.0	7.3	0.6	8.5	0.6	7.9	0.6	10.1	1.5	8.3	2.6
Sep 13	7.4	-0.3	7.9	-1.5	7.0	0.6	8.6	0.5	7.6	0.6	8.8	0.1	8.7	0.7
Oct 13	9.1	2.0	9.8	1.7	8.6	2.2	8.4	0.9	9.0	0.8	10.5	1.2	9.8	1.1
Nov 13	10.9	1.3	13.0	2.6	9.4	0.3	8.5	0.3	9.2	0.4	14.1	3.2	10.4	0.2
Dec 13	9.2	-1.3	9.3	-3.3	9.1	0.2	8.2	0.2	8.7	0.4	11.1	-2.5	8.9	-1.0
Jan 14	7.9	0.5	7.2	0.0 ¹	8.4	0.9	8.0	1.0	8.2	0.6	7.7	-1.2	8.1	0.5
Feb 14	7.9	-0.3	7.6	-1.0	8.2	0.2	7.8	0.2	8.1	0.2	7.5	-0.1	7.6	-0.1
Mar 14	8.5	1.0	9.3	2.1	8.0	0.2	7.6	0.3	8.1	0.3	9.0	2.1	7.7	0.3
Apr 14	9.2	1.7	9.9	2.0	8.7	1.5	8.5	1.9	9.0	0.9	9.4	0.1	7.0	0.1
May 14	8.3	-0.3	7.4	-1.2	9.0	0.4	8.7	0.5	8.3	0.3	7.7	-1.5	7.3	-0.1
June 14	8.2	0.6	7.4	1.0	8.9	0.3	8.7	0.4	7.9	0.3	6.2	1.1	7.7	1.4

*NFNE is non-food non-energy,

** SPI for quintile 1

¹ Actual figure is -0.04, displayed in rounded figure

Table 1.1 : Period Average and YoY % Changes of Indices (Base 2007-08)						
Index	Averages July-June % Changes			June over June % Changes		
	2013-14	2012-13	2011-12	2013-14	2012-13	2011-12
CPI	8.62	7.36	11.01	8.22	5.85	11.26
SPI	9.30	7.77	7.08	6.24	7.91	9.67
WPI	8.15	7.35	10.42	7.73	5.20	6.40

Figure 1: CPI Inflation YoY, Special Indices

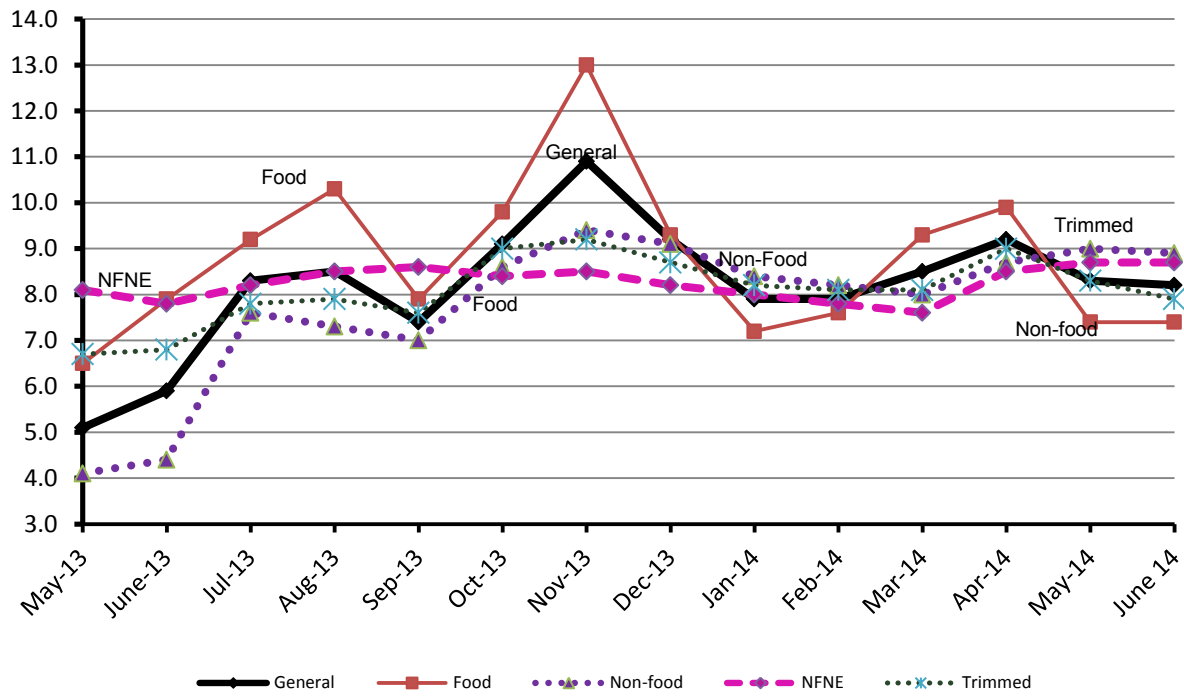
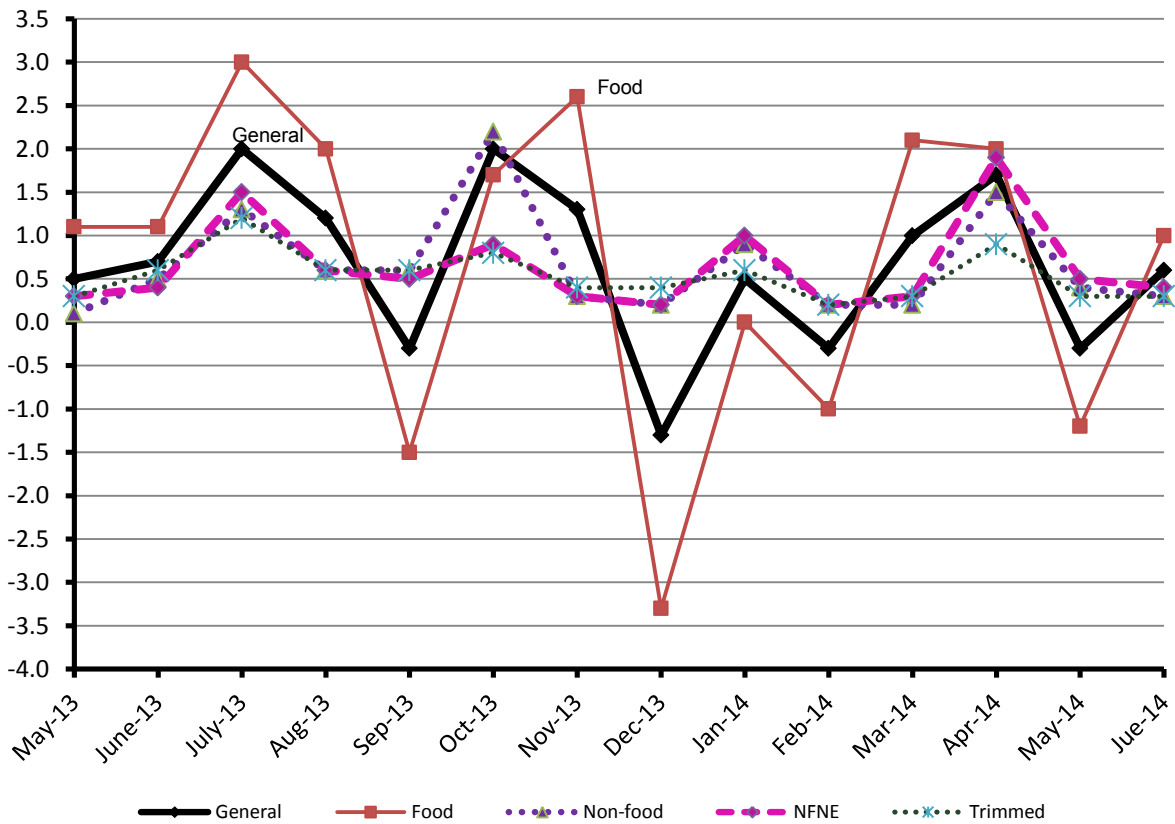


Figure 2: CPI Inflation MoM, Special Indices



II. Price Index (CPI)

The Consumer Price Index of June, 2014 has increased by 0.61% over May, 2014 and increased by 8.22% over corresponding month of the last year, i.e. June 2013.

Table 2 : Consumer Price Index by Group of Commodities and Services (Base 2007-08)

No	Group	Group Weight (%)	Indices			% Change June 2014 Over		Impact (In % points) June 2014 Over	
			June 2014	May 2014	June 2013	May 2014	June 2013	May 2014	June 2013
	General	100.00	194.74	193.55	179.94	0.61	8.22	0.61	8.22
1.	Food & Non-alcoholic Bev.	34.83	214.50	213.57	202.11	0.44	6.13	0.17	2.40
	<i>Non-perishable Food Items</i>	29.84	212.56	211.67	201.88	0.42	5.29	0.14	1.77
	<i>Perishable Food Items</i>	4.99	226.07	224.92	203.50	0.51	11.09	0.03	0.63
2.	Alcoholic Bev.& Tobacco	1.41	259.28	223.66	194.66	15.93	33.20	0.26	0.51
3.	Clothing & Footwear	7.57	206.96	205.01	186.46	0.95	10.99	0.08	0.86
4.	Housing, Water, Electricity, Gas & Fuels	29.41	169.53	169.51	154.65	0.01	9.62	0.00	2.43
5.	Furnishing & Household Equipment Maintenance	4.21	204.09	202.02	185.82	1.02	9.83	0.04	0.43
6.	Health	2.19	172.79	172.45	160.93	0.20	7.37	0.00	0.14
7.	Transport	7.20	195.27	195.03	187.25	0.12	4.28	0.00	0.32
8.	Communication	3.22	129.88	129.81	128.73	0.05	0.89	0.00	0.02
9.	Recreation & Culture	2.02	188.74	188.47	177.84	0.14	6.13	0.00	0.12
10.	Education	3.94	190.90	188.73	163.54	1.15	16.73	0.05	0.60
11.	Restaurants & Hotels	1.23	238.76	238.05	210.64	0.30	13.35	0.00	0.19
12.	Miscellaneous	2.76	215.12	215.29	202.39	-0.08	6.29	0.00	0.19

Main contributors to month-on-month and year-on-year percentage changes are given below and detail is given in Annexure A.

1. **Month-on-month** Top few commodities which varied from previous month i.e. May 2014 are given below:-

Food Items Increased: Tomatoes (60.22%), Cigarettes (16.18%), Pulse Mash (3.61%), Sugar (3.44%), Potatoes (3.26%), Spices (2.79%), Beverages (2.55%), Milk Powder (2.36%), Gur (2.03%), Pulse Moong (1.98%), Eggs (1.64%), Milk Products (1.58%), Condiments (1.56%), and Milk Fresh (1.43%).

Decreased: Fresh Vegetables (4.83%), Chicken (3.13%), Onions (2.67%), Tea (1.71%), Beans (1.46%), Wheat Flour (1.11%), and Wheat & Betel Leaves Nuts (1.04% each).

Non-food Items Increased: Household Servant (2.52%), Cotton Cloth (2.22%), Marriage Hall Charges (1.46%), Education (1.15%), Sewing needle & Dry Cell (1.12%), Hosiery (1.07%), Mechanical Services (0.96%), and Tailoring (0.92%).

Decreased: Personal Equipments (0.73%), Firewood Whole (0.42%), and Motor Fuel (0.12%).

2. **Year-on-year:** Top few commodities which varied from previous year i.e. June 2013 are given below:-

Food Items Increased: Potatoes (138.70%), Pulse Moong (34.39%), Cigarettes (33.61%), Pulse Masoor (17.06%), Milk Powder (16.11%), Fresh Fruits (15.23%), Condiments (13.76%), Wheat Products (13.68%), and Readymade Food (13.35%).

Decreased: Tomatoes (35.06%), Onions (18.62%), Tea (16.32%), Besan (12.67%), Pulse Gram (10.79%), Gram Whole (7.74%), Chicken (5.43%), and Fresh Vegetables (1.29%).

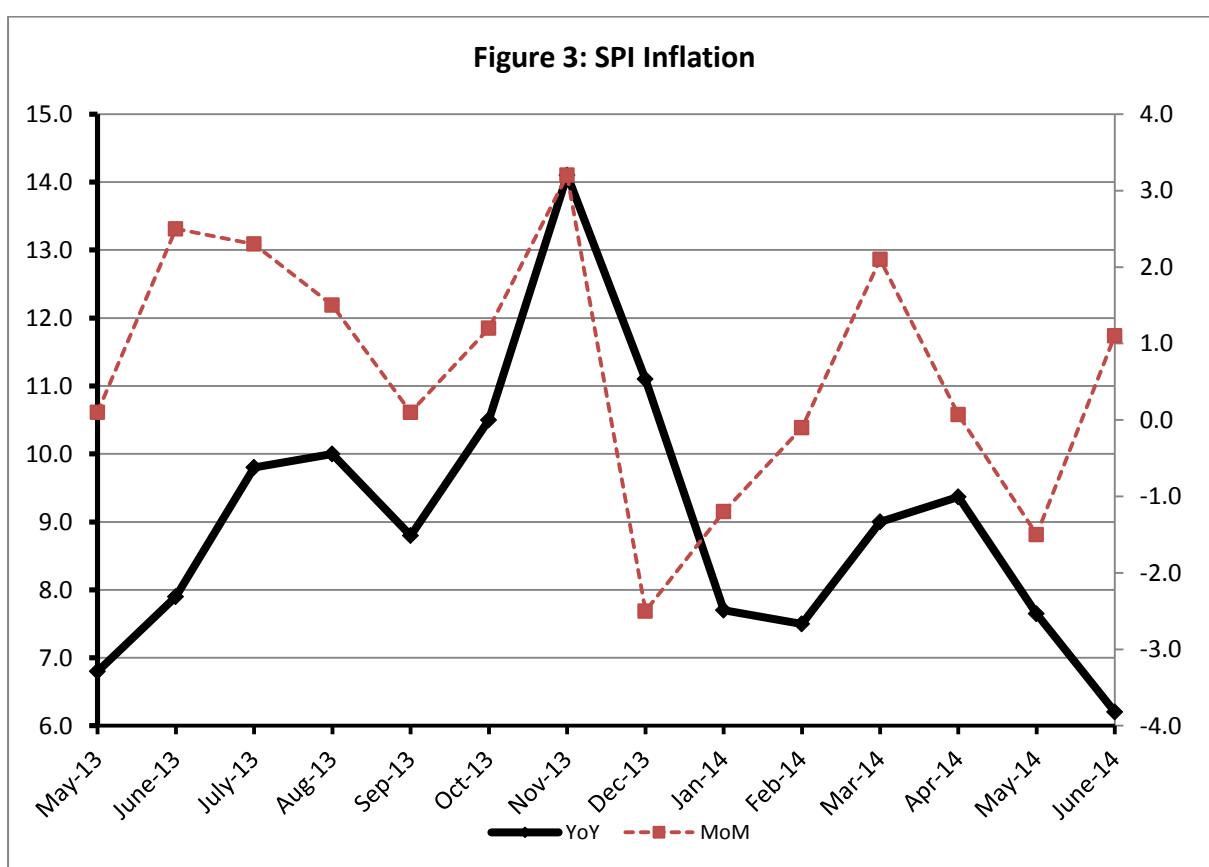
Non-food Items Increased: Postal Service (23.25%), Education (16.73%), Electricity (15.82%), Cotton Cloth (14.43%), Doctor (MBBS) Clinic Fee (14.29%), Woolen Readymade Garments (13.45%), Readymade Garments (13.29%), and Tailoring (13.16%).

III. Sensitive Price Indicator

Quintile-wise percentage changes YoY and MoM are given below in Table 3. The series from May 2013 to June 2014 is also graphed below in Figure 3.

Table 3 : Sensitive Price Indicator (Base 2007-08)

Quintiles	Indices			% Change June 2014 over	
	June 2014	May 2014	June 2013	May 2014	June 2013
1	203.07	200.84	191.15	1.11	6.24
2	209.48	207.07	197.59	1.16	6.01
3	212.49	209.95	196.33	1.21	8.23
4	214.79	212.12	197.73	1.26	8.63
5	214.05	211.34	197.73	1.28	8.25
Combined	212.40	209.80	196.75	1.24	7.95



IV. Wholesale Price Index

The Wholesale Price Index for June 2014 is increased by 1.37% over May 2014. It is increased by 7.73% over the corresponding month of the last year. YoY and MoM movements, from May 2013 to June 2014 are also graphed below in Figure 4.

Table 4 : Wholesale Price Index by Group of Commodities (Base 2007-08)

No.	Group	Group Weight (%)	Indices			% Change Jun 2014 over		Impact (in %age points) Jun 2014 over	
			Jun 2014	May 2014	Jun 2013	May 2014	Jun 2013	May 2014	Jun 2013
	General	100.00	214.60	211.71	199.21	1.37	7.73	1.37	7.73
1.	Agriculture, Forestry & Fishery Products	25.77	228.53	223.55	209.16	2.23	9.26	0.61	2.51
2.	Ores & Minerals, Electricity, Gas & Water	12.04	242.45	242.36	214.86	0.04	12.84	0.01	1.67
3.	Food Products, Beverages & Tobacco, Textiles, Apparel & Leather Products	31.11	204.31	201.29	192.87	1.50	5.93	0.45	1.80
	i. Food Products, Bev. & Tobacco	20.07	209.08	204.93	195.63	2.03	6.88	0.39	1.36
	ii. Textiles and Apparel	10.33	193.75	193.05	190.61	0.36	1.65	0.03	0.16
	iii. Leather Products	0.71	222.94	218.42	147.99	2.07	50.65	0.02	0.27
4.	Other Transportable Goods except Metal Products, Machinery & Equipment	22.37	214.75	212.29	202.56	1.16	6.02	0.26	1.37
5.	Metal Products, Machinery & Equipment	8.72	171.26	170.11	162.20	0.68	5.59	0.05	0.40

Main contributors to month-on-month and year-on-year percentage changes are given below and detail is given in Annexure B.

1. **Month-on-month** Top few commodities which varied from previous month i.e. May, 2014 are given below:-

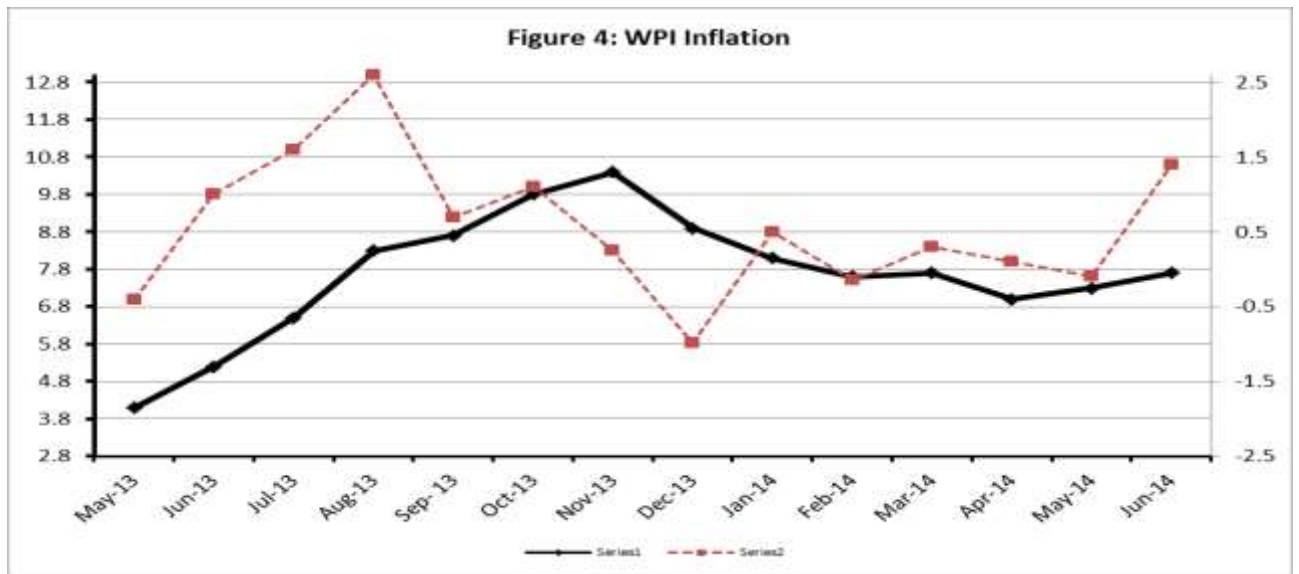
Increased: Stimulants & Spice Crops (25.34%), Tobacco Products (19.85%), Chemicals (7.29%), Pesticides (7.03%), Fresh Fruits (6.60%), Sugar (5.94%), Potatoes (5.74%), Eggs (5.58%), Leather Without Hair (5.09%), Pipe Fitting (4.16%) and Milk (4.14%).

Decreased: Poultry (3.41%), Vegetables (3.05%), Nylon Yarn (1.67%), Coffee & Tea (1.32%), Vegetable Ghee (1.16%) and Printing paper (1.12%)

2. **Year-on-year** Top few commodities which varied from previous year i.e. June, 2013 are given below:-

Increased: Potatoes (217.14%), Stimulants and Spice Crops (122.74%), Leather without hair (78.42%), Other Leather N.E.C (54.15%), Insecticides (46.80%), Lathe Machine (41.39%), Tobacco Products (39.14%), Dyeing Material (34.08%), Cotton Seeds (33.83%) and Tractors (32.46%).

Decreased: Coffee & Tea (16.93%), Spices (15.90%), vegetables (15.07%) and **Other Cereal Flour** (15.00%).



Annexure A: Consumer Price Index Numbers by Commodity Groups & Commodities (2007-2008=100)

Item and Specification	Weight	Index Numbers			% Change in Jun 2014 over			
		Jun 14	May 14 13	Jun	May 2014	Jun 2013		
General	100.0000	194.74	193.55	179.94	+	0.61	+	8.22
Food & Non-alcoholic Beverage	34.8343	214.50	213.57	202.11	+	0.44	+	6.13
01 Wheat	0.3477	200.35	202.46	188.23	-	1.04	+	6.44
02 Wheat Flour	4.1648	213.46	215.86	199.73	-	1.11	+	6.87
03 Wheat Product	0.0959	215.08	216.64	189.19	-	0.72	+	13.68
04 Besan	0.1500	174.07	174.07	199.32	+	0.00	-	12.67
05 Rice	1.5821	194.10	194.11	186.75	-	0.01	+	3.94
06 Cereals	0.1563	235.80	234.92	216.83	+	0.37	+	8.75
07 Bakery & Confectionary	1.1550	203.91	203.57	183.07	+	0.17	+	11.38
08 Nimco	0.4574	230.82	229.43	206.43	+	0.61	+	11.82
09 Meat	2.4303	237.75	236.99	223.43	+	0.32	+	6.41
10 Chicken	1.3596	199.93	206.39	211.41	-	3.13	-	5.43
11 Fish	0.2970	222.36	221.27	200.15	+	0.49	+	11.10
12 Milk Fresh	6.6800	242.98	239.56	225.78	+	1.43	+	7.62
13 Milk Products	0.6338	238.58	234.87	216.57	+	1.58	+	10.16
14 Milk Powder	0.1129	221.55	216.45	190.81	+	2.36	+	16.11
15 Eggs	0.4555	167.66	164.96	153.31	+	1.64	+	9.36
16 Mustard Oil	0.0952	158.12	157.00	158.43	+	0.71	-	0.20
17 Cooking Oil	1.7538	161.96	162.67	162.54	-	0.44	-	0.36
18 Vegetable Ghee	2.0714	158.34	158.90	155.94	-	0.35	+	1.54
19 Dry Fruits	0.2543	234.85	233.21	214.95	+	0.70	+	9.26
20 Fresh Fruits	1.8649	237.43	237.01	206.05	+	0.18	+	15.23
21 Pulse Masoor	0.2712	180.68	180.78	154.35	-	0.06	+	17.06
22 Pulse Moong	0.2336	301.11	295.25	224.06	+	1.98	+	34.39
23 Pulse Mash (Washed)	0.2098	209.35	202.05	187.81	+	3.61	+	11.47
24 Pulse Gram	0.2361	168.96	168.69	189.40	+	0.16	-	10.79
25 Gram Whole	0.1616	179.88	179.36	194.98	+	0.29	-	7.74
26 Beans	0.0269	240.36	243.91	221.84	-	1.46	+	8.35
27 Potatoes	0.4699	403.63	390.89	169.11	+	3.26	+	138.68
28 Onion	0.5340	195.07	200.43	239.70	-	2.67	-	18.62
29 Tomatoes	0.4419	116.37	72.63	179.19	+	60.22	-	35.06
30 Fresh Vegetables	1.6802	202.52	212.79	205.17	-	4.83	-	1.29
31 Sugar	1.0445	195.32	188.83	194.50	+	3.44	+	0.42
32 Gur	0.0220	253.67	248.63	250.06	+	2.03	+	1.44
33 Honey	0.0446	284.59	282.11	256.65	+	0.88	+	10.89
34 SweetMeat	0.2483	226.62	225.95	210.79	+	0.30	+	7.51
35 Beverages	1.1990	205.75	200.63	184.25	+	2.55	+	11.67
36 Jam, Tomato Ketchup & Pickles	0.2454	194.91	193.93	185.63	+	0.51	+	5.00
37 Condiments	0.2656	246.44	242.66	216.64	+	1.56	+	13.76
38 Spices	0.5441	227.28	221.11	219.37	+	2.79	+	3.61
39 Tea	0.8377	207.74	211.36	248.27	-	1.71	-	16.32
Alcoholic Beverages, Tobacco	1.4135	259.28	223.66	194.66	+	15.93	+	33.20
40 Cigarettes	1.3906	260.26	224.02	194.79	+	16.18	+	33.61
41 Betel Leaves & Nuts	0.0229	199.83	201.93	186.64	-	1.04	+	7.07
Clothing & Footwear	7.5708	206.96	205.01	186.46	+	0.95	+	10.99
42 Cotton Cloth	1.7286	201.94	197.56	176.47	+	2.22	+	14.43
43 Woolen Cloth	0.8759	227.29	224.61	206.49	+	1.19	+	10.07
44 Readymade Garments	0.9739	206.29	205.68	182.09	+	0.30	+	13.29
45 Woolen Readymade Garments	0.3964	218.34	218.34	192.45	+	0.00	+	13.45
46 Hosiery	0.5094	219.18	216.85	194.30	+	1.07	+	12.80
47 Dopatta	0.4412	225.05	223.46	203.75	+	0.71	+	10.45
48 Cleaning and Laundry	0.2110	228.30	226.92	206.24	+	0.61	+	10.70
49 Tailoring	0.8840	247.32	245.06	218.55	+	0.92	+	13.16
50 Footwear	1.5504	163.50	163.45	159.00	+	0.03	+	2.83

Annexure A: Consumer Price Index Numbers by Commodity Groups & Commodities (2007-2008=100)

Item and Specification	Weight	Index Numbers			% Change in Jun 2014 over			
		Jun 14	May 14 13	Jun	May 2014	Jun 2013		
Housing, Water, Elec., Gas, Other	29.4149	169.53	169.51	154.65	+	0.01	+	9.62
51 House Rent	21.8149	157.05	157.05	144.57	+	0.00	+	8.63
52 Construction Input Items	0.5623	232.72	232.02	210.12	+	0.30	+	10.76
53 Construction Wage Rates	0.3331	199.53	198.08	181.81	+	0.73	+	9.75
54 Water Supply	0.4971	149.92	149.92	139.65	+	0.00	+	7.35
55 Electricity	4.3985	227.44	227.44	196.37	+	0.00	+	15.82
56 Gas	1.5756	143.81	143.81	143.81	+	0.00	+	0.00
57 Kerosene Oil	0.0057	278.77	277.67	267.67	+	0.40	+	4.15
58 Firewood Whole	0.2277	265.16	266.27	243.22	-	0.42	+	9.02
Furnished H.Hold Equip. & Hous	4.2082	204.09	202.02	185.82	+	1.02	+	9.83
59 Furniture	0.3315	194.71	194.15	174.82	+	0.29	+	11.38
60 Household Textiles	0.6489	199.85	198.83	180.81	+	0.51	+	10.53
61 Household Equipment	0.5936	170.58	170.01	162.40	+	0.34	+	5.04
62 Utensils	0.3212	205.72	204.94	184.55	+	0.38	+	11.47
63 Plastic Products	0.2547	195.76	195.15	181.60	+	0.31	+	7.80
64 Washing Soaps & Detergents	0.7893	220.60	219.42	203.46	+	0.54	+	8.42
65 Sewing Needle & Dr Cell	0.1496	180.69	178.69	166.36	+	1.12	+	8.61
66 Household Servant	1.0432	219.71	214.31	195.58	+	2.52	+	12.34
67 Marriage Hall Charges	0.0762	224.03	220.81	200.04	+	1.46	+	11.99
Health	2.1868	172.79	172.45	160.93	+	0.20	+	7.37
68 Drugs & Medicines	1.2667	145.57	145.18	140.94	+	0.27	+	3.29
69 Medical Equipments	0.0080	219.76	217.98	205.49	+	0.82	+	6.94
70 Doctor (MBBS) Clinic Fee	0.5904	232.41	232.41	203.36	+	0.00	+	14.29
71 Medical Tests	0.3217	169.35	168.61	160.67	+	0.44	+	5.40
Transport	7.2023	195.27	195.03	187.25	+	0.12	+	4.28
72 Motor Vehicles	0.6630	160.00	159.77	156.71	+	0.14	+	2.10
73 Motor Vehicle Accessories	0.2439	228.31	226.97	213.67	+	0.59	+	6.85
74 Motor Fuel	3.0269	186.72	186.95	179.10	-	0.12	+	4.25
75 Mechanical Service	0.4552	206.25	204.29	189.24	+	0.96	+	8.99
76 Motor Vehicle Tax	0.1099	153.74	153.74	153.74	+	0.00	+	0.00
77 Transport Services	2.7034	210.36	209.96	202.50	+	0.19	+	3.88
Communication	3.2198	129.88	129.81	128.73	+	0.05	+	0.89
78 Postal Services	0.0662	215.89	215.89	175.16	+	0.00	+	23.25
79 Communication & Apparatus	3.1536	128.07	128.01	127.75	+	0.05	+	0.25
Recreation & Culture	2.0227	188.74	188.47	177.84	+	0.14	+	6.13
80 Recreation & Culture	0.8634	127.44	127.00	122.65	+	0.35	+	3.91
81 Text Books	0.5706	279.73	279.73	260.03	+	0.00	+	7.58
82 Newspapers	0.1934	175.42	175.42	170.49	+	0.00	+	2.89
83 Stationery	0.3953	197.77	197.36	183.35	+	0.21	+	7.86
Education	3.9431	190.90	188.73	163.54	+	1.15	+	16.73
84 Education	3.9431	190.90	188.73	163.54	+	1.15	+	16.73
Restaurants & Hotels	1.2286	238.76	238.05	210.64	+	0.30	+	13.35
85 Readymade Food	1.2286	238.76	238.05	210.64	+	0.30	+	13.35
Miscellaneous Goods & Service	2.7550	215.12	215.29	202.39	-	0.08	+	6.29
86 Personal Care	1.4935	199.48	198.96	185.79	+	0.26	+	7.37
87 Cosmetics	0.3853	182.74	181.99	163.22	+	0.41	+	11.96
88 Blades	0.0322	184.61	183.30	176.40	+	0.71	+	4.65
89 Personal Equipments	0.8440	258.73	260.62	250.63	-	0.73	+	3.23

Annexure B: Wholesale Price Indices by Major Groups & Commodities

(2007-2008=100)

Item and Specification	Weight	Index Numbers			% Change in Jun 2014 over			
		Jun 14	May 14 13	Jun	May 2014	Jun 2013		
General	100.0000	214.60	211.71	199.21	+	1.37	+	7.73
Agriculture Forestry & Fisher	25.7674	228.53	223.55	209.16	+	2.23	+	9.26
001 Wheat	0.6297	205.99	204.31	198.50	+	0.82	+	3.77
002 Maize	0.6764	189.74	190.14	189.41	-	0.21	+	0.17
003 Rice	2.4413	180.08	179.49	174.41	+	0.33	+	3.25
004 Sorghum / Jowar	0.0214	316.79	317.54	259.71	-	0.24	+	21.98
005 Millet / Bajra	0.0374	173.02	169.81	191.77	+	1.89	-	9.78
006 Vegetables	1.2441	205.05	211.50	241.43	-	3.05	-	15.07
007 Fresh Fruits	1.5144	283.76	266.20	227.05	+	6.60	+	24.98
008 Dry Fruits	0.2478	219.20	213.82	194.73	+	2.52	+	12.57
009 Cotton Seeds	1.1511	219.90	220.44	164.31	-	0.24	+	33.83
010 Other Oil Seeds	0.0722	182.36	177.64	170.04	+	2.66	+	7.25
011 Edible Roots / Potatoes	0.2540	472.92	447.26	149.12	+	5.74	+	<u>217.14</u>
012 Stimulant & Spice Crops	0.1634	472.58	377.03	212.17	+	25.34	+	<u>122.74</u>
013 Pulses	0.4901	200.37	198.71	186.44	+	0.84	+	7.47
014 Sugar Crops	1.0725	267.92	267.92	267.92	+	0.00	+	0.00
015 Fibre Crops	5.3169	220.08	217.38	207.94	+	1.24	+	5.84
016 Unmanufactured Tobacco	0.0742	196.08	196.08	176.22	+	0.00	+	11.27
017 Poultry	0.5633	207.92	215.25	224.76	-	3.41	-	7.49
018 Raw Milk from Bovine Animals	7.0279	240.49	230.92	218.54	+	4.14	+	10.04
019 Eggs	0.5034	166.88	158.06	153.34	+	5.58	+	8.83
020 Raw Animal Materials / Wool	0.0351	157.03	156.33	150.66	+	0.45	+	4.23
021 Hides & Fur Skins, Raw	0.4834	145.85	145.23	141.49	+	0.43	+	3.08
022 Fuel Wood in Logs	0.0179	243.47	243.47	228.51	+	0.00	+	6.55
023 Fish Live Fresh or Chilled	1.7295	250.37	249.76	240.87	+	0.24	+	3.94
Ores/Minerals, Elec., Gas & W	12.0389	242.45	242.36	214.86	+	0.04	+	12.84
024 Coal not Agglomerated	0.7508	223.53	223.53	223.53	+	0.00	+	0.00
025 Natural Gas Liquefied	5.7385	201.86	201.77	203.09	+	0.04	-	0.61
026 Salt & Pure Sodium Chloride	0.0584	243.18	234.11	203.88	+	3.87	+	19.28
027 Electrical Energy	5.4912	287.44	287.44	226.10	+	0.00	+	27.13
Food, Beverages, Tobacco, Textil	31.1122	204.31	201.29	192.87	+	1.50	+	5.93
Food Products, Beverages &	20.0718	209.08	204.93	195.63	+	2.03	+	6.88
028 Meat of Animals	3.4559	243.10	241.31	232.03	+	0.74	+	4.77
029 Vegetables & Fruit Juice	0.0058	194.02	192.16	190.57	+	0.97	+	1.81
030 Dried Fruits & Nuts	0.1733	217.80	218.45	222.76	-	0.30	-	2.23
031 Fruit Juices	0.3880	170.89	169.52	163.81	+	0.81	+	4.32
032 Vegetable Oils Refined	1.9242	165.47	165.54	159.65	-	0.04	+	3.65
033 Vegetable Ghee	1.5632	140.01	141.65	141.61	-	1.16	-	1.13
034 Oil Cakes	0.9611	217.25	219.35	171.55	-	0.96	+	26.64
035 Processed Liquid Milk	4.4437	223.02	222.76	208.15	+	0.12	+	7.14
036 Milk & Cream in Solid Form	0.0316	211.32	209.55	177.58	+	0.84	+	19.00
037 Ice Cream	0.0047	214.21	209.79	191.15	+	2.11	+	12.06
038 Dairy Products N.E.C	0.0117	235.64	230.41	213.25	+	2.27	+	10.50
039 Wheat Flour	2.3034	196.01	197.22	186.66	-	0.61	+	5.01
040 Other Cereal Flour	0.0604	139.38	139.33	163.97	+	0.04	-	15.00
041 Sugar Refined	1.7975	208.70	196.99	208.83	+	5.94	-	0.06
042 Chocolate	0.0139	99.19	99.19	99.19	+	0.00	+	0.00
043 Sugar Confectionary	0.0738	102.28	102.28	102.28	+	0.00	+	0.00
044 Coffee & Tea	0.7303	185.89	188.38	223.78	-	1.32	-	16.93
045 Spices	0.1449	191.67	191.65	227.90	+	0.01	-	15.90
046 Other Food Products	0.0336	293.72	293.22	314.63	+	0.17	-	6.65
047 Mineral Water	0.0207	185.23	185.23	175.01	+	0.00	+	5.84
048 Beverages	0.6303	166.38	164.58	139.28	+	1.09	+	19.46
049 Tobacco Products	1.2998	290.52	242.41	208.80	+	19.85	+	39.14
Textiles & Apparels	10.3289	193.75	193.05	190.61	+	0.36	+	1.65
050 Cotton Yarn	5.2491	200.42	200.83	209.76	-	0.20	-	4.45
051 Nylon Yarn	0.1719	162.34	165.10	189.67	-	1.67	-	14.41
052 Blended Yarn	0.1689	192.59	191.86	198.67	+	0.38	-	3.06
053 Woven Fabrics	0.0128	226.82	226.82	208.98	+	0.00	+	8.54
054 Cotton Fabrics	0.6343	196.81	193.10	182.84	+	1.92	+	7.64
055 Other Fabrics	1.1016	197.56	194.43	172.31	+	1.61	+	14.65

Annexure B: Wholesale Price Indices by Major Groups & Commodities

(2007-2008=100)

Item and Specification	Weight	Index Numbers			% Change in Jun 2014 over	
		Jun 14	May 14 13	Jun	May 2014	Jun 2013
056 Silk & Reyon Fabrics	0.7350	165.85	165.85	158.62	+ 0.00	+ 4.56
057 Towels	0.1235	242.19	242.19	213.19	+ 0.00	+ 13.60
058 Blankets	0.0029	219.66	219.66	185.21	+ 0.00	+ 18.60
059 Bed Sheets	0.0913	242.12	242.12	213.18	+ 0.00	+ 13.58
060 Quilts	0.0019	172.42	172.42	154.00	+ 0.00	+ 11.96
061 Woolen Carpets	0.0383	113.69	113.69	106.55	+ 0.00	+ 6.70
062 Synthetic Carpets	0.0566	116.10	116.10	114.41	+ 0.00	+ 1.48
063 Hosiery Products	0.8832	202.13	198.64	185.30	+ 1.76	+ 9.08
064 Readymade Garments	1.0576	169.33	168.50	147.20	+ 0.49	+ 15.03
Leather Products	0.7115	222.94	218.42	147.99	+ 2.07	+ 50.65
065 Leather Without Hair	0.2973	223.51	212.68	125.27	+ 5.09	+ 78.42
066 Other Leather N.E.C	0.2567	276.72	276.72	179.51	+ 0.00	+ 54.15
067 Footwears	0.1575	134.22	134.22	139.49	+ 0.00	- 3.78
Other Transportable Goods	22.3659	214.75	212.29	202.56	+ 1.16	+ 6.02
068 Timber	0.0165	182.14	178.07	154.65	+ 2.29	+ 17.78
069 Printing Paper	0.4279	172.62	174.58	164.54	- 1.12	+ 4.91
070 Hard Board	0.1579	229.17	229.17	200.00	+ 0.00	+ 14.59
071 Coke	0.2797	163.45	163.45	163.45	+ 0.00	+ 0.00
072 Motor Spirit	1.5336	182.40	182.40	169.03	+ 0.00	+ 7.91
073 Diesel Oil	5.2664	260.69	260.69	248.72	+ 0.00	+ 4.81
074 Kerosine Oil	0.2151	288.01	288.01	250.79	+ 0.00	+ 14.84
075 Furnace Oil	3.2664	172.01	166.52	169.52	+ 3.30	+ 1.47
076 Mobil Oil	0.7114	200.28	197.73	186.56	+ 1.29	+ 7.35
077 Chemicals	1.7720	189.08	176.24	160.39	+ 7.29	+ 17.89
078 Dyeing Material	0.1539	143.77	143.77	107.23	+ 0.00	+ 34.08
079 Fertilizers	2.8657	267.48	265.61	261.32	+ 0.70	+ 2.36
080 Pesticides	0.2763	254.27	237.58	203.99	+ 7.03	+ 24.65
081 Insecticides	0.1276	181.89	178.94	123.90	+ 1.65	+ 46.80
082 Paints & Varnishes	0.1916	275.71	269.84	244.12	+ 2.18	+ 12.94
083 Medicines	1.1428	142.22	141.80	138.71	+ 0.30	+ 2.53
084 Soaps & Detergents	0.8168	183.11	182.20	176.21	+ 0.50	+ 3.92
085 Auto Tyres	0.2703	188.21	186.63	184.54	+ 0.85	+ 1.99
086 Plastic Products	0.4550	203.08	203.08	197.98	+ 0.00	+ 2.58
087 Glass sheets	0.2089	209.86	209.86	201.02	+ 0.00	+ 4.40
088 Other Glass Articles	0.1635	218.27	218.27	206.09	+ 0.00	+ 5.91
089 Ceramics & Sanitary Fixture	0.0244	201.75	199.50	161.77	+ 1.13	+ 24.71
090 Bricks, Blocks & Tiles	0.1566	200.57	196.15	185.87	+ 2.25	+ 7.91
091 Cement	1.8145	207.76	207.98	189.49	- 0.11	+ 9.64
092 Bed Foam	0.0006	150.83	149.67	144.33	+ 0.78	+ 4.50
093 Matches	0.0505	143.20	143.20	142.72	+ 0.00	+ 0.34
Metal Product, Machinery & Eq	8.7156	171.26	170.11	162.20	+ 0.68	+ 5.59
094 Pig Iron	0.0593	128.97	128.97	128.97	+ 0.00	+ 0.00
095 Steel Bar & Sheets	1.4022	144.30	139.53	135.04	+ 3.42	+ 6.86
096 Pipe Fittings	0.0780	175.34	168.33	148.98	+ 4.16	+ 17.69
097 Steel Products	0.3879	170.24	170.24	167.61	+ 0.00	+ 1.57
098 Engines & Motors	0.0046	109.07	109.07	109.07	+ 0.00	+ 0.00
099 Vacuum Pumps	0.0155	115.39	115.39	115.39	+ 0.00	+ 0.00
100 Air Conditioners	0.0049	181.12	181.12	179.78	+ 0.00	+ 0.75
101 Cultivators	0.0551	226.90	226.90	189.23	+ 0.00	+ 19.91
102 Chuff Cutter	0.1293	149.20	149.20	144.94	+ 0.00	+ 2.94
103 Tractors	0.0028	214.54	214.54	161.96	+ 0.00	+ 32.46
104 Lathe Machines	0.0525	208.81	208.81	147.68	+ 0.00	+ 41.39
105 Concrete Mixture	0.0107	138.83	138.83	138.83	+ 0.00	+ 0.00
106 Fridge, WashM, SewM, Fans, Iron	1.1645	195.75	193.39	177.00	+ 1.22	+ 10.59
107 Electric Wires	0.0912	179.18	179.18	160.12	+ 0.00	+ 11.90
108 Lighting Equipments	1.4431	164.95	164.95	151.78	+ 0.00	+ 8.68
109 Radio & Television	0.1843	126.49	126.49	126.49	+ 0.00	+ 0.00
110 Motor Vehicles	0.0244	182.59	182.59	173.75	+ 0.00	+ 5.09
111 Motorcycles	0.2570	126.70	126.70	124.56	+ 0.00	+ 1.72
112 Bicycles	3.3483	182.84	182.84	178.81	+ 0.00	+ 2.25