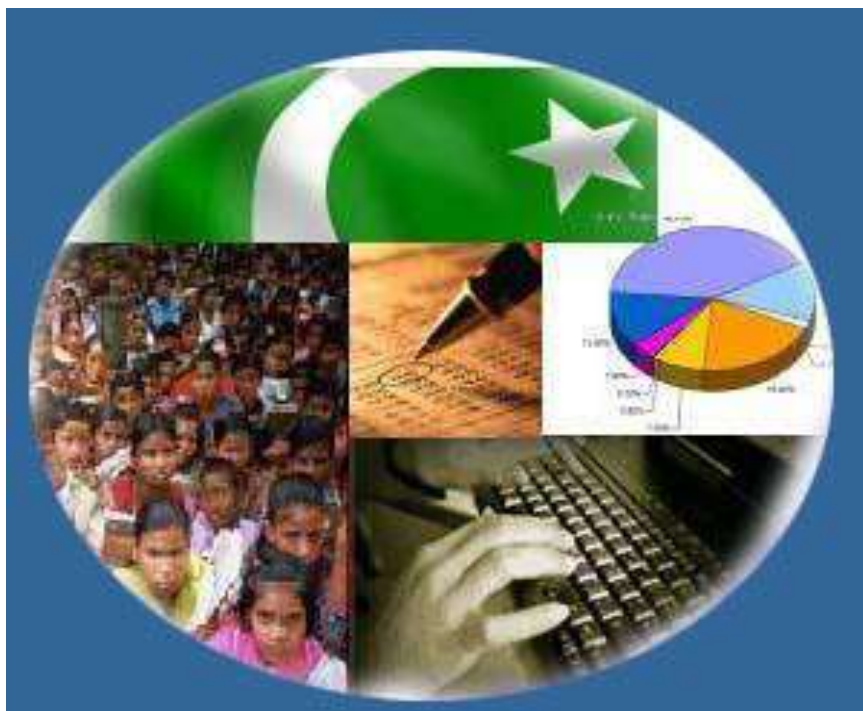




# Monthly Review on Price Indices



**August, 2013**  
(Base 2007-08)

**Government of Pakistan  
Statistics Division  
Pakistan Bureau of Statistics  
Islamabad**



## I. Inflation in Brief

1. CPI inflation, General, increased by 8.5% on year-on-year basis in August 2013 as compared to 8.3% in the previous month and 9.1% in August 2012. On month-on-month basis, it increased by 1.2% in August 2013 as compared to 2.0% in the previous month and 0.9% in August 2012.
2. Core inflation measured by non-food non-energy CPI (Core NFNE) increased by 8.5% in August 2013 as compared to 8.2% in July 2013 (YoY) and by 10.8% in August 2012. Core NFNE inflation on MoM basis increased by 0.6% in August 2013 as compared to 1.5% a month earlier and 0.3% in August 2012.
3. Core inflation, measured by 20% weighted trimmed mean CPI (Core Trimmed) increased by 7.9% in August 2013 and by 7.8% in July 2013 (YoY) which increased by 10.6% in August 2012. Core Trimmed inflation has increased by 0.6% on MoM basis in August 2013 as compared to 1.2% in July 2013 which increased by 0.4% in August 2012.
4. SPI inflation on YoY basis increased by 10.1% in August 2013 as compared with 9.8% a month earlier and 8.2% in August 2012. On MoM basis, it increased by 1.5% in August 2013 as compared to an increase of 2.3% a month earlier and 1.3% in August 2012.
5. WPI inflation on YoY basis increased to 8.3% in August 2013 compared with 6.5% a month earlier and 7.7% in August 2012. WPI inflation on MoM basis increased by 2.6% in August 2013 as compared to an increase of 1.6% a month earlier and 1.0% in August 2012.
6. Figures 1 and 2 show graphically the data of Table 1. Table 1.1 shows "Period Average" and "YoY" percent changes in indices of three years.

**Table 1: Inflation (%) (Base 2007-08)**

Period	CPI						Core Inflation				SPI**		WPI	
	General		Food		Non-food		NFNE*		Trimmed		YoY	MoM	YoY	MoM
	YoY	MoM	YoY	MoM	YoY	MoM	YoY	MoM	YoY	MoM				
Jul 12	9.6	-0.2	9.1	1.8	10.0	-1.7	11.3	1.0	10.7	0.7	7.7	0.5	7.2	0.4
Aug 12	9.1	0.9	8.5	0.9	9.4	0.9	10.8	0.3	10.6	0.4	8.2	1.3	7.7	1.0
Sep 12	8.8	0.8	7.6	0.7	9.7	0.9	10.4	0.4	10.4	0.5	8.0	1.2	7.8	0.3
Oct 12	7.7	0.4	5.8	-0.1	9.1	0.7	10.1	1.2	9.7	0.7	6.7	-0.4	7.5	0.1
Nov 12	6.9	-0.4	5.3	-0.3	8.1	-0.4	9.7	0.2	8.8	0.2	6.0	0.0	7.7	-0.4
Dec 12	7.9	0.2	7.7	0.0	8.1	0.4	9.8	0.5	9.2	0.3	8.2	0.0	9.6	0.4
Jan 13	8.1	1.7	8.1	1.9	8.1	1.5	9.9	1.2	9.9	1.0	9.2	1.9	8.6	1.2
Feb 13	7.4	-0.3	7.4	-1.3	7.4	0.3	9.6	0.4	9.2	0.2	9.4	0.1	8.3	0.3
Mar 13	6.6	0.4	6.3	0.5	6.7	0.3	9.0	0.4	8.4	0.2	8.7	0.8	7.9	0.3
Apr 13	5.8	1.1	5.5	1.4	6.0	0.9	8.7	1.1	7.6	0.7	6.6	-0.3	6.8	0.8
May 13	5.1	0.5	6.5	1.1	4.1	0.1	8.1	0.3	6.7	0.3	6.8	0.1	4.1	-0.4
Jun 13	5.9	0.7	7.9	1.1	4.4	0.5	7.8	0.4	6.8	0.6	7.9	2.5	5.2	1.0
Jul 13	8.3	2.0	9.2	3.0	7.6	1.3	8.2	1.5	7.8	1.2	9.8	2.3	6.5	1.6
Aug 13	8.5	1.2	10.3	2.0	7.3	0.6	8.5	0.6	7.9	0.6	10.1	1.5	8.3	2.6

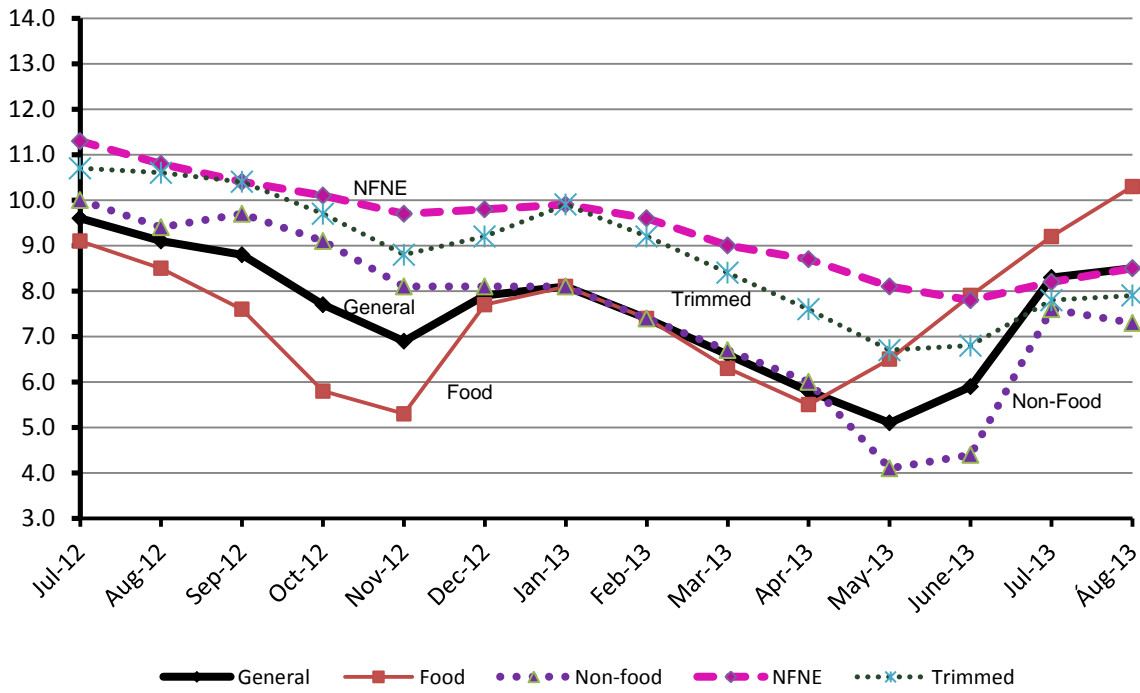
\*NFNE is non-food non-energy,

\*\* SPI for quintile 1

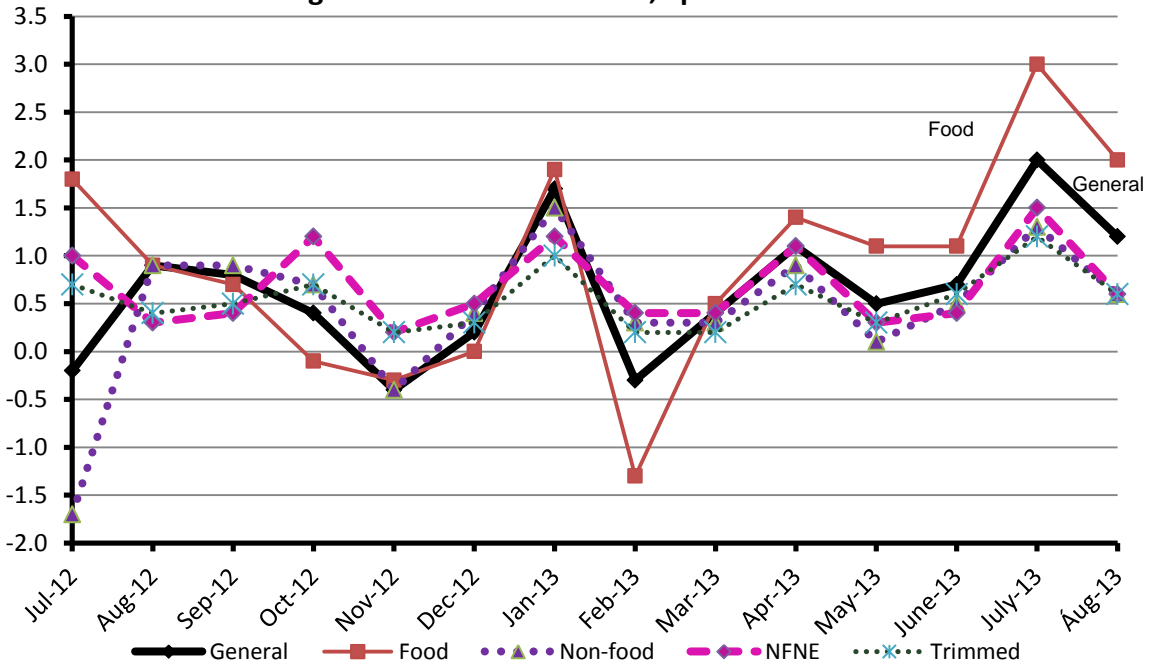
**Table 1.1 : Period Average and YoY % Changes of Indices (Base 2007-08)**

Index	Averages July-August % Changes			August over August % Changes		
	2013-14	2012-13	2011-12	2013-14	2012-13	2011-12
CPI	8.41	9.32	11.99	8.55	9.05	11.56
SPI	9.93	7.92	12.33	10.06	8.16	11.55
WPI	7.41	7.47	19.46	8.26	7.71	18.68

**Figure 1: CPI Inflation YoY, Special Indices**



**Figure 2: CPI Inflation MoM, Special Indices**



## II. Consumer Price Index (CPI)

The Consumer Price Index of August, 2013 has increased by 1.16% over July 2013 and increased by 8.55% over corresponding month of last year.

**Table 2 : Consumer Price Index by Group of Commodities and Services (Base 2007-08)**

No	Group	Group Weight (%)	Indices			% Change Aug 2013 over		Impact (In % points) Aug 2013 over	
			Aug 2013	July 2013	Aug 2012	July 2013	Aug 2012	July 2013	Aug 2012
	General	<b>100.00</b>	<b>185.71</b>	<b>183.58</b>	<b>171.09</b>	<b>1.16</b>	<b>8.55</b>	<b>1.16</b>	<b>8.55</b>
1.	Food & Non-alcoholic Bev.	34.83	211.91	207.61	192.43	2.07	10.12	0.81	3.97
	<i>Non-perishable Food Items</i>	29.84	206.90	203.25	190.34	1.80	8.70	0.59	2.89
	<i>Perishable Food Items</i>	4.99	241.86	233.67	204.93	3.50	18.02	0.22	1.08
2.	Alcoholic Bev.& Tobacco	1.41	217.51	217.46	189.91	0.02	14.53	0.00	0.23
3.	Clothing & Footwear	7.57	192.38	190.42	167.23	1.03	15.04	0.08	1.11
4.	Housing, Water, Electricity, Gas & Fuels	29.41	157.59	157.54	147.95	0.03	6.52	0.01	1.66
5.	Furnishing & Household Equipment Maintenance	4.21	188.99	187.23	174.05	0.94	8.58	0.04	0.37
6.	Health	2.19	162.32	161.45	152.39	0.54	6.52	0.01	0.13
7.	Transport	7.20	190.63	188.83	186.61	0.95	2.15	0.07	0.17
8.	Communication	3.22	129.65	129.62	123.56	0.02	4.93	0.00	0.11
9.	Recreation & Culture	2.02	181.28	178.48	165.19	1.57	9.74	0.03	0.19
10.	Education	3.94	166.03	164.25	153.60	1.08	8.09	0.04	0.29
11.	Restaurants & Hotels	1.23	216.32	213.87	196.56	1.15	10.05	0.02	0.14
12.	Miscellaneous	2.76	204.07	200.91	192.44	1.57	6.04	0.05	0.19

Main contributors to month-on-month and year-on-year percentage changes are given below and detail is given in Annexure A.

- Month-on-month** Top few commodities which varied from previous month i.e. July 2013 are given below:-

**Food Items Increased:** Onions (34.57%), Chicken (12.15%), Potatoes (7.36%), Eggs (6.23%), Wheat (4.94%), Wheat Flour (4.49%), Fresh Vegetables (4.15%), Gur (3.74%), Wheat Products (2.36%), Cereals (1.92%), Milk Products (1.83%), Beans (1.70%), Bakery & Confectionary (1.66%), Sweetmeat (1.33%), Milk Fresh (1.26%), Beverages (1.24%) and Readymade Food (1.15%).

**Decreased:** Tomatoes (11.54%), Pulse Gram (4.71%), Gram Whole (3.41%), Besan (3.37%), Fresh Fruits (2.47%), Cooking Oil (0.90%), Mustard Oil (0.57%), Sugar (0.40%), Pulse Masoor & Pulse Moong (0.29% each) and Spices (0.21%).

**Non-food Items Increased:** Personal Equipments (3.09%), Text Books (2.63%), Readymade Garments (2.30%), Kerosene Oil (2.08%), Tailoring (1.90%), Motor Fuel (1.72%), Doctor (MBBS) Clinic Fee (1.27%), Cleaning & Laundry, Plastic Products and Washing Soaps & Detergents (1.24% each), Household Servant (1.18%), Hosiery & Stationery (1.16% each) and Mechanical Services (1.11%).

2. **Year-on-year:** Top few commodities which varied from previous year i.e. August 2012 are given below:-

**Food Items Increased:** Onions (70.08%), Tomatoes (45.05%), Fresh Vegetables (27.18%), Wheat Flour (27.07%), Wheat (26.78%), Chicken (26.03%), Tea (25.02%), Gur (21.69%), Wheat Products (19.37%), Cigarettes (14.65%), Cereals (13.25%), Rice (13.21%), Potatoes (12.43%) and Beans (11.97%).

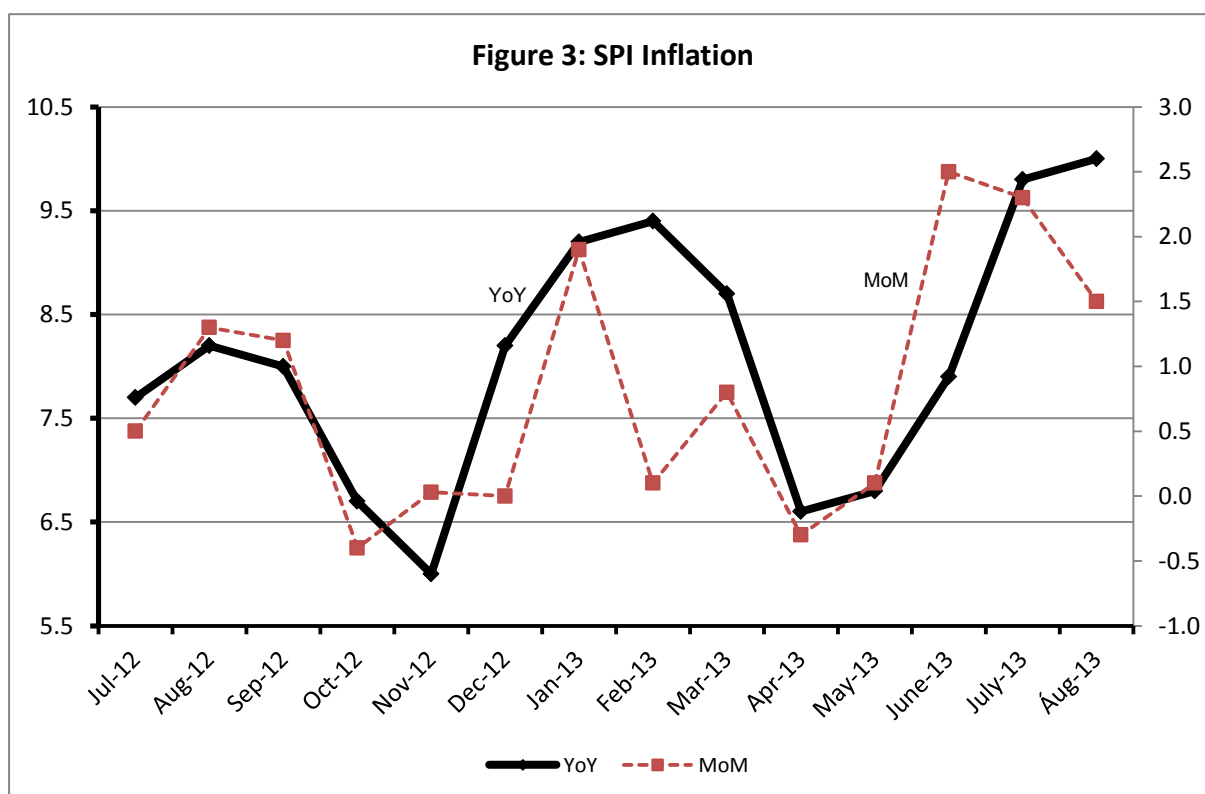
**Decreased:** Pulse Gram (28.25%), Besan (25.99%), Gram Whole (21.24%), Spices (18.99%), Vegetable Ghee (4.86%), Fresh Fruits (4.37%), Pulse Mash (3.39%), Cooking Oil (2.42%), Mustard Oil (1.52%) and Sugar (0.07%).

**Non-food Items Increased:** Postal Services (25.98%), Woolen Readymade Garments (19.21%), Footwear (18.51%), Text Books (15.84%), Tailoring (15.78%), Dopatta (15.13%), Cotton Cloth (14.94%), Cleaning & Laundry (13.89%), Sewing Needle & Dry Cells (13.66%), Cosmetics (13.34%), Hosiery (12.52%) and Readymade Garments (12.45%).

### III. Sensitive Price Indicator

Quintile-wise percentage changes YoY and MoM are given below in Table 3. The series from July 2012 to Aug 2013 is also graphed below in Figure 3.

Table 3 : Sensitive Price Indicator (Base 2007-08)					
Quintiles	Indices			% Change Aug 2013 over	
	Aug 2013	July 2013	Aug 2012	July 2013	Aug 2012
1	198.48	195.49	180.34	1.53	10.06
2	204.55	201.80	186.89	1.36	9.45
3	203.12	200.49	185.92	1.31	9.25
4	204.34	201.84	187.33	1.24	9.08
5	203.86	201.59	187.77	1.13	8.57
Combined	203.29	200.80	186.47	1.24	9.02



## IV. Wholesale Price Index

The Wholesale Price Index for August 2013 increased by 2.65% over July 2013. It increased by 8.26% over the corresponding month of the last year. YoY and MoM movements, from July 2012 to August 2013 are also graphed below in Figure 4.

**Table 4 : Wholesale Price Index by Group of Commodities (Base 2007-08)**

No.	Group	Group Weight (%)	Indices			% Change Aug 2013 over		Impact (in %age points) Aug 2013 over	
			Aug 2013	Jul 2013	Aug 2012	Jul 2013	Aug 2012	Jul 2013	Aug 2012
	<b>General</b>	<b>100.00</b>	<b>207.85</b>	<b>202.49</b>	<b>191.99</b>	<b>2.65</b>	<b>8.26</b>	<b>2.65</b>	<b>8.26</b>
1.	Agriculture, Forestry & Fishery Products	25.77	218.23	214.77	196.76	1.61	10.89	0.44	2.88
2.	Ores & Minerals, Electricity, Gas & Water	12.04	239.51	215.17	207.36	11.31	15.50	1.45	2.02
3.	Food Products, Beverages & Tobacco, Textiles, Apparel & Leather Products	31.11	197.43	195.21	183.90	1.14	7.36	0.34	2.19
	i. Food Products, Bev. & Tobacco	20.07	199.00	198.23	188.39	0.39	5.63	0.08	1.11
	ii. Textiles and Apparel	10.33	195.98	191.81	179.69	2.17	9.07	0.21	0.88
	iii. Leather Products	0.71	173.96	159.51	118.56	9.06	46.73	0.05	0.21
4.	Other Transportable Goods except Metal Products, Machinery & Equipments	22.37	209.59	206.44	202.63	1.53	3.43	0.35	0.81
5.	Metal Products, Machinery & Equipments	8.72	166.14	164.46	158.17	1.02	5.04	0.07	0.36

Main contributors to month-on-month and year-on-year percentage changes are given below and detail is given in Annexure B.

1. **Month-on-month** Top few commodities which varied from previous month i.e. July 2013 are given below:-

**Increased:** Electric tariff B4 Commercial (54.07%), Electric tariff B3 Commercial (50.75%), Electric tariff B2 Commercial (48.14%), Electric tariff B1 Commercial (37.72%), other leather N.E.C (17.60%), Edible Roots/ Potatoes (15.44%), poultry (10.10%), Vegetables (8.62%), Eggs (7.63%), Kerosene oil (5.19%), Wheat (4.35%), Stimulants & Spice Crops (4.17%), Woven fabrics (3.91%) and Electric tariff D1 Agricultural (1.70%).

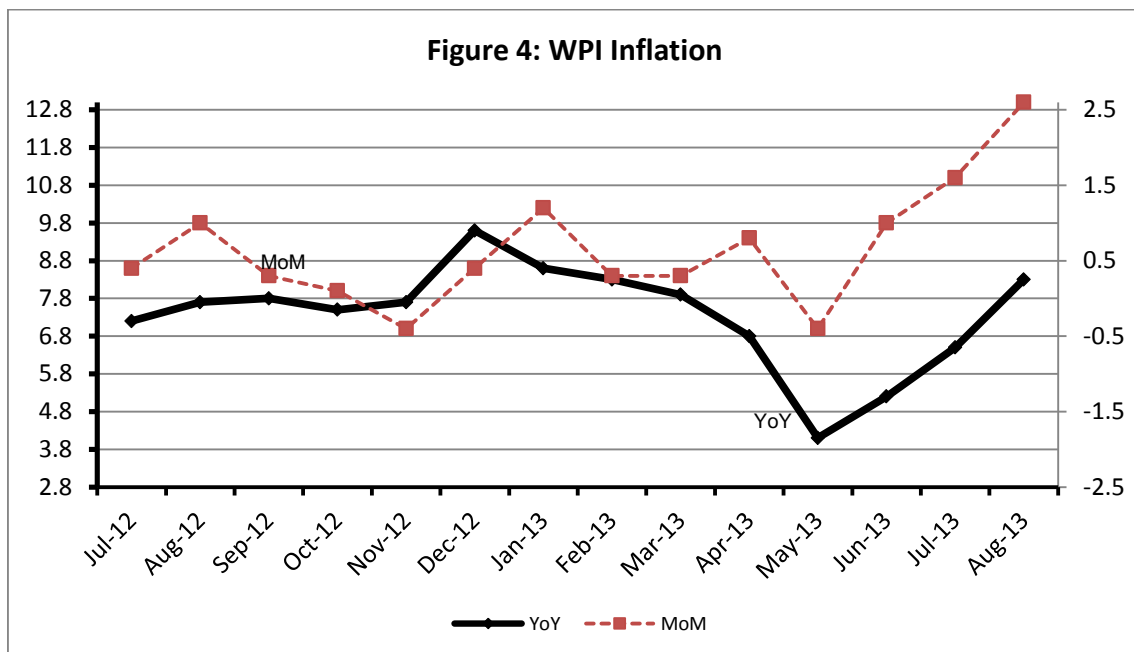
**Decreased:** Other cereal Flour (3.61%), Fresh Fruits (3.03%), Pulses (2.06%), Bajra (1.87%), dairy products (1.67%) and Jowar (1.65%).



2. **Year-on-year** Top few commodities which varied from previous year i.e. August, 2012 are given below:-

**Increased:** Other Leather N.E.C (94.84%), Electric tariff B4 Commercial (54.07%), Electric tariff B3 Commercial (50.75%), Electric tariff B2 Commercial (48.14%), stimulant and Spice Crops (44.69%), Fish (42.86%), Vegetables (40.90%), Electric tariff B1 Commercial (37.72%), Jowar (31.61%), Poultry (28.10%), Woven fabrics (27.95%), Wheat (27.76%), Salt and pure sodium chloride (26.72%) and wheat flour (26.31%).

**Decreased:** Spices (35.70%), other Cereal Flour (31.45%), Pulses (17.50%), Furnace oil (13.37%), Fresh Fruits (12.36%), Cotton Seeds (5.56%), other Glass Articles (5.45%), Radio and Television (4.70%) and Vegetable ghee (2.96%).



**Annexure A: Consumer Price Index Numbers by Commodity Groups & Commodities (2007-2008=100)**

Item and Specification	Weight	Index Numbers			% Change in Aug 2013 over			
		Aug 13	Jul 13	Aug 12	Jul 2013	Aug 2012		
<b>General</b>	<b>100.0000</b>	<b>185.71</b>	<b>183.58</b>	<b>171.09</b>	<b>+</b>	<b>1.16</b>	<b>+</b>	<b>8.55</b>
<b>Food &amp; Non-alcoholic Beverage</b>	<b>34.8343</b>	<b>211.91</b>	<b>207.61</b>	<b>192.43</b>	<b>+</b>	<b>2.07</b>	<b>+</b>	<b>10.12</b>
01 Wheat	0.3477	204.43	194.81	161.25	+	4.94	+	26.78
02 Wheat Flour	4.1648	213.76	204.57	168.22	+	4.49	+	27.07
03 Wheat Product	0.0959	196.14	191.61	164.31	+	2.36	+	19.37
04 Besan	0.1500	174.75	180.85	236.13	-	3.37	-	25.99
05 Rice	1.5821	190.71	189.10	168.45	+	0.85	+	13.21
06 Cereals	0.1563	223.43	219.23	197.29	+	1.92	+	13.25
07 Bakery & Confectionary	1.1550	186.63	183.59	170.69	+	1.66	+	9.34
08 Nimco	0.4574	210.08	208.18	192.39	+	0.91	+	9.19
09 Meat	2.4303	225.95	225.18	215.44	+	0.34	+	4.88
10 Chicken	1.3596	228.30	203.56	181.15	+	12.15	+	26.03
11 Fish	0.2970	202.20	200.39	184.21	+	0.90	+	9.77
12 Milk Fresh	6.6800	229.63	226.78	213.26	+	1.26	+	7.68
13 Milk Products	0.6338	223.35	219.34	207.43	+	1.83	+	7.67
14 Milk Powder	0.1129	192.47	192.03	181.39	+	0.23	+	6.11
15 Eggs	0.4555	177.43	167.03	163.77	+	6.23	+	8.34
16 Mustard Oil	0.0952	157.73	158.64	160.17	-	0.57	-	1.52
17 Cooking Oil	1.7538	160.17	161.62	164.15	-	0.90	-	2.42
18 Vegetable Ghee	2.0714	155.90	155.82	163.86	+	0.05	-	4.86
19 Dry Fruits	0.2543	218.07	217.86	203.16	+	0.10	+	7.34
20 Fresh Fruits	1.8649	228.27	234.05	238.71	-	2.47	-	4.37
21 Pulse Masoor	0.2712	156.96	157.42	142.88	-	0.29	+	9.85
22 Pulse Moong	0.2336	236.45	237.14	228.62	-	0.29	+	3.42
23 Pulse Mash (Washed)	0.2098	187.03	187.00	193.59	+	0.02	-	3.39
24 Pulse Gram	0.2361	170.97	179.42	238.30	-	4.71	-	28.25
25 Gram Whole	0.1616	180.87	187.26	229.65	-	3.41	-	21.24
26 Beans	0.0269	232.00	228.13	207.20	+	1.70	+	11.97
27 Potatoes	0.4699	226.71	211.16	201.64	+	7.36	+	12.43
28 Onion	0.5340	335.76	249.51	197.41	+	34.57	+	70.08
29 Tomatoes	0.4419	285.06	322.23	196.52	-	11.54	+	45.05
30 Fresh Vegetables	1.6802	219.98	211.21	172.97	+	4.15	+	27.18
31 Sugar	1.0445	195.15	195.93	195.29	-	0.40	-	0.07
32 Gur	0.0220	271.23	261.46	222.88	+	3.74	+	21.69
33 Honey	0.0446	256.90	256.65	237.13	+	0.10	+	8.34
34 SweetMeat	0.2483	214.63	211.81	201.85	+	1.33	+	6.33
35 Beverages	1.1990	189.21	186.90	170.95	+	1.24	+	10.68
36 Jam, Tomato Ketchup & Pickles	0.2454	187.53	187.26	173.19	+	0.14	+	8.28
37 Condiments	0.2656	217.77	217.51	211.99	+	0.12	+	2.73
38 Spices	0.5441	216.40	216.85	267.12	-	0.21	-	18.99
39 Tea	0.8377	253.02	252.69	202.38	+	0.13	+	25.02
<b>Alcoholic Beverages, Tobacco</b>	<b>1.4135</b>	<b>217.51</b>	<b>217.46</b>	<b>189.91</b>	<b>+</b>	<b>0.02</b>	<b>+</b>	<b>14.53</b>
40 Cigarettes	1.3906	217.97	217.93	190.12	+	0.02	+	14.65
41 Betel Leaves & Nuts	0.0229	189.38	188.57	177.28	+	0.43	+	6.83
<b>Clothing &amp; Footwear</b>	<b>7.5708</b>	<b>192.38</b>	<b>190.42</b>	<b>167.23</b>	<b>+</b>	<b>1.03</b>	<b>+</b>	<b>15.04</b>
42 Cotton Cloth	1.7286	179.59	177.82	156.24	+	1.00	+	14.94
43 Woolen Cloth	0.8759	208.28	206.87	185.59	+	0.68	+	12.23
44 Readymade Garments	0.9739	189.32	185.06	168.36	+	2.30	+	12.45
45 Woolen Readymade Garments	0.3964	192.45	192.45	161.44	+	0.00	+	19.21
46 Hosiery	0.5094	197.66	195.40	175.66	+	1.16	+	12.52
47 Dopatta	0.4412	207.23	205.47	180.00	+	0.86	+	15.13
48 Cleaning and Laundry	0.2110	210.77	208.19	185.07	+	1.24	+	13.89
49 Tailoring	0.8840	230.99	226.68	199.50	+	1.90	+	15.78
50 Footwear	1.5504	169.08	168.99	142.67	+	0.05	+	18.51

**Annexure A: Consumer Price Index Numbers by Commodity Groups & Commodities (2007-2008=100)**

Item and Specification	Weight	Index Numbers			% Change in Aug 2013 over			
		Aug 13	Jul 13	Aug 12	Jul 2013	Aug 2012		
<b>Housing, Water, Elec., Gas, Other</b>	<b>29.4149</b>	<b>157.59</b>	<b>157.54</b>	<b>147.95</b>	<b>+</b>	<b>0.03</b>	<b>+</b>	<b>6.52</b>
51 House Rent	21.8149	148.24	148.24	137.02	+	0.00	+	8.19
52 Construction Input Items	0.5623	215.23	214.61	199.78	+	0.29	+	7.73
53 Construction Wage Rates	0.3331	187.03	185.33	168.30	+	0.92	+	11.13
54 Water Supply	0.4971	141.53	141.36	133.23	+	0.12	+	6.23
55 Electricity	4.3985	196.37	196.37	196.37	+	0.00	+	0.00
56 Gas	1.5756	143.81	143.81	134.34	+	0.00	+	7.05
57 Kerosene Oil	0.0057	280.70	274.98	253.42	+	2.08	+	10.76
58 Firewood Whole	0.2277	245.25	244.09	226.19	+	0.48	+	8.43
<b>Furnished H.Hold Equip.&amp;Hous</b>	<b>4.2082</b>	<b>188.99</b>	<b>187.23</b>	<b>174.05</b>	<b>+</b>	<b>0.94</b>	<b>+</b>	<b>8.58</b>
59 Furniture	0.3315	178.39	177.21	164.07	+	0.67	+	8.73
60 Household Textiles	0.6489	183.82	182.53	170.63	+	0.71	+	7.73
61 Household Equipment	0.5936	163.24	162.88	155.95	+	0.22	+	4.67
62 Utensils	0.3212	187.69	185.91	172.04	+	0.96	+	9.10
63 Plastic Products	0.2547	185.38	183.11	173.77	+	1.24	+	6.68
64 Washing Soaps & Detergents	0.7893	207.01	204.48	189.11	+	1.24	+	9.47
65 Sewing Needle & Dr Cell	0.1496	168.42	166.67	148.18	+	1.05	+	13.66
66 Household Servant	1.0432	199.82	197.48	181.54	+	1.18	+	10.07
67 Marriage Hall Charges	0.0762	202.60	201.35	189.00	+	0.62	+	7.20
<b>Health</b>	<b>2.1868</b>	<b>162.32</b>	<b>161.45</b>	<b>152.39</b>	<b>+</b>	<b>0.54</b>	<b>+</b>	<b>6.52</b>
68 Drugs & Medicines	1.2667	141.30	141.18	135.65	+	0.08	+	4.17
69 Medical Equipments	0.0080	205.83	205.49	191.94	+	0.17	+	7.24
70 Doctor (MBBS) Clinic Fee	0.5904	207.25	204.66	187.93	+	1.27	+	10.28
71 Medical Tests	0.3217	161.52	160.87	152.08	+	0.40	+	6.21
<b>Transport</b>	<b>7.2023</b>	<b>190.63</b>	<b>188.83</b>	<b>186.61</b>	<b>+</b>	<b>0.95</b>	<b>+</b>	<b>2.15</b>
72 Motor Vehicles	0.6630	158.44	158.19	150.97	+	0.16	+	4.95
73 Motor Vehicle Accessories	0.2439	218.09	217.18	203.89	+	0.42	+	6.96
74 Motor Fuel	3.0269	184.92	181.80	183.29	+	1.72	+	0.89
75 Mechanical Service	0.4552	192.91	190.80	179.46	+	1.11	+	7.49
76 Motor Vehicle Tax	0.1099	153.74	153.74	152.02	+	0.00	+	1.13
77 Transport Services	2.7034	203.54	202.74	200.12	+	0.39	+	1.71
<b>Communication</b>	<b>3.2198</b>	<b>129.65</b>	<b>129.62</b>	<b>123.56</b>	<b>+</b>	<b>0.02</b>	<b>+</b>	<b>4.93</b>
78 Postal Services	0.0662	215.89	215.89	171.37	+	0.00	+	25.98
79 Communication & Apparatus	3.1536	127.84	127.81	122.55	+	0.02	+	4.32
<b>Recreation &amp; Culture</b>	<b>2.0227</b>	<b>181.28</b>	<b>178.48</b>	<b>165.19</b>	<b>+</b>	<b>1.57</b>	<b>+</b>	<b>9.74</b>
80 Recreation & Culture	0.8634	124.61	123.55	121.64	+	0.86	+	2.44
81 Text Books	0.5706	266.87	260.03	230.37	+	2.63	+	15.84
82 Newspapers	0.1934	170.49	170.49	154.22	+	0.00	+	10.55
83 Stationery	0.3953	186.81	184.67	171.61	+	1.16	+	8.86
<b>Education</b>	<b>3.9431</b>	<b>166.03</b>	<b>164.25</b>	<b>153.60</b>	<b>+</b>	<b>1.08</b>	<b>+</b>	<b>8.09</b>
84 Education	3.9431	166.03	164.25	153.60	+	1.08	+	8.09
<b>Restaurants &amp; Hotels</b>	<b>1.2286</b>	<b>216.32</b>	<b>213.87</b>	<b>196.56</b>	<b>+</b>	<b>1.15</b>	<b>+</b>	<b>10.05</b>
85 Readymade Food	1.2286	216.32	213.87	196.56	+	1.15	+	10.05
<b>Miscellaneous Goods &amp; Service</b>	<b>2.7550</b>	<b>204.07</b>	<b>200.91</b>	<b>192.44</b>	<b>+</b>	<b>1.57</b>	<b>+</b>	<b>6.04</b>
86 Personal Care	1.4935	187.02	185.88	175.58	+	0.61	+	6.52
87 Cosmetics	0.3853	168.14	166.59	148.35	+	0.93	+	13.34
88 Blades	0.0322	178.04	177.70	169.56	+	0.19	+	5.00
89 Personal Equipments	0.8440	251.61	244.06	243.27	+	3.09	+	3.43

**Annexure B: Wholesale Price Indices by Major Groups & Commodities (2007-2008=100)**

Item and Specification	Weight	Index Numbers			% Change in Aug 2013 over			
		Aug 13	Jul 13	Aug 12	Jul 2013	Aug 2012		
<b>General</b>	<b>100.0000</b>	<b>207.85</b>	<b>202.49</b>	<b>191.99</b>	<b>+</b>	<b>2.65</b>	<b>+</b>	<b>8.26</b>
<b>Agriculture Forestry &amp; Fisher</b>	<b>25.7674</b>	<b>218.23</b>	<b>214.77</b>	<b>196.79</b>	<b>+</b>	<b>1.61</b>	<b>+</b>	<b>10.89</b>
001 Wheat	0.6297	215.13	206.16	168.38	+	4.35	+	27.76
002 Maize	0.6764	194.89	193.96	170.14	+	0.48	+	14.55
003 Rice	2.4413	177.57	177.08	158.39	+	0.28	+	12.11
004 Sorghum / Jowar	0.0214	265.69	270.15	201.88	-	1.65	+	31.61
005 Millet / Bajra	0.0374	190.24	193.87	179.34	-	1.87	+	6.08
006 Vegetables	1.2441	297.02	273.46	210.80	+	8.62	+	40.90
007 Fresh Fruits	1.5144	245.49	253.15	280.12	-	3.03	-	12.36
008 Dry Fruits	0.2478	191.77	192.88	174.44	-	0.58	+	9.93
009 Cotton Seeds	1.1511	165.07	165.17	174.78	-	0.06	-	5.56
010 Other Oil Seeds	0.0722	173.57	169.50	176.96	+	2.40	-	1.92
011 Edible Roots / Potatoes	0.2540	217.93	188.79	195.16	+	15.44	+	11.67
012 Stimulant & Spice Crops	0.1634	241.41	231.75	166.85	+	4.17	+	44.69
013 Pulses	0.4901	180.97	184.78	219.37	-	2.06	-	17.50
014 Sugar Crops	1.0725	267.92	267.92	267.92	+	0.00	+	0.00
015 Fibre Crops	5.3169	214.52	210.28	186.59	+	2.02	+	14.97
016 Unmanufactured Tobacco	0.0742	176.34	176.34	167.67	+	0.00	+	5.17
017 Poultry	0.5633	237.40	215.62	185.32	+	10.10	+	28.10
018 Raw Milk from Bovine Animals	7.0279	221.65	220.27	208.85	+	0.63	+	6.13
019 Eggs	0.5034	180.14	167.37	161.94	+	7.63	+	11.24
020 Raw Animal Materials / Wool	0.0351	153.23	151.73	134.22	+	0.99	+	14.16
021 Hides & Fur Skins, Raw	0.4834	140.87	140.52	137.25	+	0.25	+	2.64
022 Fuel Wood in Logs	0.0179	231.13	230.69	203.50	+	0.19	+	13.58
023 Fish Live Fresh or Chilled	1.7295	250.91	247.49	175.63	+	1.38	+	42.86
<b>Ores/Minerals, Elec., Gas &amp; W</b>	<b>12.0389</b>	<b>239.51</b>	<b>215.17</b>	<b>207.36</b>	<b>+</b>	<b>11.31</b>	<b>+</b>	<b>15.50</b>
024 Coal not Agglomerated	0.7508	223.53	223.53	196.08	+	0.00	+	14.00
025 Natural Gas Liquified	5.7385	203.57	203.74	191.36	-	0.08	+	6.38
026 Salt & Pure Sodium Chloride	0.0584	205.80	204.73	162.41	+	0.52	+	26.72
027 Electrical Energy	5.4912	279.61	226.10	226.10	+	23.67	+	23.67
<b>Food, Beverages, Tobacco, Textil</b>	<b>31.1122</b>	<b>197.43</b>	<b>195.21</b>	<b>183.90</b>	<b>+</b>	<b>1.14</b>	<b>+</b>	<b>7.36</b>
<b>Food Products, Beverages &amp;</b>	<b>20.0718</b>	<b>199.00</b>	<b>198.23</b>	<b>188.39</b>	<b>+</b>	<b>0.39</b>	<b>+</b>	<b>5.63</b>
028 Meat of Animals	3.4559	233.93	232.94	225.92	+	0.43	+	3.55
029 Vegetables & Fruit Juice	0.0058	191.31	190.74	181.33	+	0.30	+	5.50
030 Dried Fruits & Nuts	0.1733	223.20	222.76	212.89	+	0.20	+	4.84
031 Fruit Juices	0.3880	165.05	164.49	156.91	+	0.34	+	5.19
032 Vegetable Oils Refined	1.9242	160.13	160.21	157.66	-	0.05	+	1.57
033 Vegetable Ghee	1.5632	140.30	141.00	144.58	-	0.50	-	2.96
034 Oil Cakes	0.9611	174.89	175.62	155.00	-	0.42	+	12.83
035 Processed Liquid Milk	4.4437	205.54	205.54	205.63	+	0.00	-	0.04
036 Milk & Cream in Solid Form	0.0316	179.40	178.39	169.45	+	0.57	+	5.87
037 Ice Cream	0.0047	209.53	204.00	170.00	+	2.71	+	23.25
038 Dairy Products N.E.C	0.0117	212.59	216.21	204.36	-	1.67	+	4.03
039 Wheat Flour	2.3034	195.91	190.04	155.10	+	3.09	+	26.31
040 Other Cereal Flour	0.0604	144.64	150.06	210.99	-	3.61	-	31.45
041 Sugar Refined	1.7975	211.85	212.01	204.68	-	0.08	+	3.50
042 Chocolate	0.0139	99.19	99.19	99.19	+	0.00	+	0.00
043 Sugar Confectionary	0.0738	102.28	102.28	100.40	+	0.00	+	1.87
044 Coffee & Tea	0.7303	230.71	229.54	190.97	+	0.51	+	20.81
045 Spices	0.1449	195.67	197.26	304.33	-	0.81	-	35.70
046 Other Food Products	0.0336	316.68	316.68	317.63	+	0.00	-	0.30
047 Mineral Water	0.0207	180.22	177.53	166.05	+	1.52	+	8.53
048 Beverages	0.6303	139.63	139.35	135.30	+	0.20	+	3.20
049 Tobacco Products	1.2998	242.41	242.41	208.80	+	0.00	+	16.10
<b>Textiles &amp; Apparels</b>	<b>10.3289</b>	<b>195.98</b>	<b>191.81</b>	<b>179.69</b>	<b>+</b>	<b>2.17</b>	<b>+</b>	<b>9.07</b>
050 Cotton Yarn	5.2491	217.78	210.89	200.46	+	3.27	+	8.64
051 Nylon Yarn	0.1719	187.63	188.58	176.45	-	0.50	+	6.34
052 Blended Yarn	0.1689	198.41	197.47	187.05	+	0.48	+	6.07
053 Woven Fabrics	0.0128	217.16	208.98	169.72	+	3.91	+	27.95
054 Cotton Fabrics	0.6343	187.43	183.43	174.86	+	2.18	+	7.19
055 Other Fabrics	1.1016	175.74	175.06	165.74	+	0.39	+	6.03
056 Silk & Reyon Fabrics	0.7350	160.08	159.34	143.08	+	0.46	+	11.88
057 Towels	0.1235	216.98	213.19	193.36	+	1.78	+	12.22

**Annexure B: Wholesale Price Indices by Major Groups & Commodities (2007-2008=100)**

Item and Specification	Weight	Index Numbers			% Change in Aug 2013 over	
		Aug 13	Jul 13	Aug 12	Jul 2013	Aug 2012
058 Blankets	0.0029	185.21	185.21	165.83	+ 0.00	+ 11.69
059 Bed Sheets	0.0913	215.79	213.18	189.27	+ 1.22	+ 14.01
060 Quilts	0.0019	156.32	156.32	147.05	+ 0.00	+ 6.30
061 Woolen Carpets	0.0383	106.55	106.55	106.55	+ 0.00	+ 0.00
062 Synthetic Carpets	0.0566	114.41	114.41	128.41	+ 0.00	- 10.90
063 Hosiery Products	0.8832	185.30	185.30	164.85	+ 0.00	+ 12.41
064 Readymade Garments	1.0576	152.13	150.00	134.39	+ 1.42	+ 13.20
<b>Leather Products</b>	<b>0.7115</b>	<b>173.96</b>	<b>159.51</b>	<b>118.56</b>	<b>+ 9.06</b>	<b>+ 46.73</b>
065 Leather Without Hair	0.2973	136.23	132.51	109.83	+ 2.81	+ 24.04
066 Other Leather N.E.C	0.2567	238.82	203.07	122.57	+ 17.60	+ 94.84
067 Footwears	0.1575	139.49	139.49	128.50	+ 0.00	+ 8.55
<b>Other Transportable Goods</b>	<b>22.3659</b>	<b>209.59</b>	<b>206.44</b>	<b>202.63</b>	<b>+ 1.53</b>	<b>+ 3.43</b>
068 Timber	0.0165	160.48	157.52	145.58	+ 1.88	+ 10.23
069 Printing Paper	0.4279	164.45	164.45	153.92	+ 0.00	+ 6.84
070 Hard Board	0.1579	200.00	200.00	166.67	+ 0.00	+ 20.00
071 Coke	0.2797	163.45	163.45	163.45	+ 0.00	+ 0.00
072 Motor Spirit	1.5336	176.54	171.92	160.78	+ 2.69	+ 9.80
073 Diesel Oil	5.2664	264.12	254.92	251.19	+ 3.61	+ 5.15
074 Kerosine Oil	0.2151	270.07	256.74	252.20	+ 5.19	+ 7.09
075 Furnace Oil	3.2664	172.70	171.62	199.36	+ 0.63	- 13.37
076 Mobil Oil	0.7114	191.04	191.04	179.57	+ 0.00	+ 6.39
077 Chemicals	1.7720	164.53	163.56	145.05	+ 0.59	+ 13.43
078 Dyeing Material	0.1539	107.23	107.23	104.26	+ 0.00	+ 2.85
079 Fertilizers	2.8657	269.62	268.23	261.86	+ 0.52	+ 2.96
080 Pesticides	0.2763	212.36	208.72	184.15	+ 1.74	+ 15.32
081 Insecticides	0.1276	124.43	124.43	117.64	+ 0.00	+ 5.77
082 Paints & Varnishes	0.1916	247.56	247.56	233.80	+ 0.00	+ 5.89
083 Medicines	1.1428	138.85	138.83	134.51	+ 0.01	+ 3.23
084 Soaps & Detergents	0.8168	177.56	176.55	157.22	+ 0.57	+ 12.94
085 Auto Tyres	0.2703	185.57	185.57	176.49	+ 0.00	+ 5.14
086 Plastic Products	0.4550	199.06	198.15	191.29	+ 0.46	+ 4.06
087 Glass sheets	0.2089	203.49	203.49	183.78	+ 0.00	+ 10.72
088 Other Glass Articles	0.1635	206.09	206.09	217.98	+ 0.00	- 5.45
089 Ceramics & Sanitary Fixture	0.0244	165.08	164.06	154.64	+ 0.62	+ 6.75
090 Bricks, Blocks & Tiles	0.1566	186.85	184.78	171.37	+ 1.12	+ 9.03
091 Cement	1.8145	194.84	194.83	180.22	+ 0.01	+ 8.11
092 Bed Foam	0.0006	144.33	144.33	139.83	+ 0.00	+ 3.22
093 Matches	0.0505	143.20	143.20	122.82	+ 0.00	+ 16.59
<b>Metal Product, Machinery &amp; Eq</b>	<b>8.7156</b>	<b>166.14</b>	<b>164.46</b>	<b>158.17</b>	<b>+ 1.02</b>	<b>+ 5.04</b>
094 Pig Iron	0.0593	128.97	128.97	128.97	+ 0.00	+ 0.00
095 Steel Bar & Sheets	1.4022	140.51	138.21	138.84	+ 1.66	+ 1.20
096 Pipe Fittings	0.0780	149.13	149.13	142.07	+ 0.00	+ 4.97
097 Steel Products	0.3879	167.61	167.61	160.60	+ 0.00	+ 4.36
098 Engines & Motors	0.0046	109.07	109.07	109.07	+ 0.00	+ 0.00
099 Vacuum Pumps	0.0155	115.39	115.39	115.39	+ 0.00	+ 0.00
100 Air Conditioners	0.0049	179.78	179.78	172.67	+ 0.00	+ 4.12
101 Cultivators	0.0551	189.23	189.23	184.66	+ 0.00	+ 2.47
102 Chuff Cutter	0.1293	144.94	144.94	138.54	+ 0.00	+ 4.62
103 Tractors	0.0028	161.96	161.96	161.96	+ 0.00	+ 0.00
104 Lathe Machines	0.0525	147.68	147.68	147.68	+ 0.00	+ 0.00
105 Concrete Mixture	0.0107	138.83	138.83	138.83	+ 0.00	+ 0.00
106 Fridge,WashM,SewM,Fans,Iron	1.1645	179.92	179.92	164.34	+ 0.00	+ 9.48
107 Electric Wires	0.0912	168.13	167.53	159.57	+ 0.36	+ 5.36
108 Lighting Equipments	1.4431	162.27	159.47	144.85	+ 1.76	+ 12.03
109 Radio & Television	0.1843	126.49	126.49	132.73	+ 0.00	- 4.70
110 Motor Vehicles	0.0244	173.99	173.99	167.04	+ 0.00	+ 4.16
111 Motorcycles	0.2570	124.80	124.80	125.19	+ 0.00	- 0.31
112 Bicycles	3.3483	180.99	178.81	175.08	+ 1.22	+ 3.38