



Monthly Review on Price Indices



October, 2012
(Base 2007-08)

Government of Pakistan
Statistics Division
Pakistan Bureau of Statistics
Islamabad

I. Inflation in Brief

1. CPI inflation, General, increased by 7.7% on year-on-year basis in October 2012 as compared to 8.8% in the previous month and 11.0% in October 2011. On month-on-month basis, it increased by 0.4% in October 2012 as compared to 0.8% in the previous month and an increase by 1.4% in October 2011.
2. Core inflation measured by non-food non-energy CPI (Core NFNE) increased by 10.8% in October 2012 as compared to 10.4% in September 2012 (YoY) and by 10.4% in October 2011. Core NFNE inflation on MoM basis increased by 1.8% in October 2012 as compared to 0.4% a month earlier and 1.4% in October 2011.
3. Core inflation, measured by 20% weighted trimmed mean CPI (Core Trimmed) increased by 10.0% in October 2012 and by 10.4% in September 2012 (YoY) which increased by 11.7% in October 2011. Core Trimmed inflation has increased by 0.8% on MoM basis in October 2012 as compared to 0.5% in September 2012 which increased by 1.0% in October 2011.
4. SPI inflation on YoY basis increased by 6.7% in October 2012 compared with 8.0% a month earlier and 6.5% in October 2011. On MoM basis, it decreased by 0.4% in October 2012 as compared to an increase of 1.2% a month earlier and increased by 0.8% in October 2011.
5. WPI inflation on YoY basis increased to 7.5% in October 2012 compared with 7.8% a month earlier and 15.4% in October 2011. WPI inflation on MoM basis increased by 0.1% in October 2012 as compared to an increase of 0.3% a month earlier and 0.4% in October 2011.
6. Figures 1 and 2 show graphically the data of Table 1. Table 1.1 shows "Period Average" and "YoY" percent changes in indices of three years.

Table 1: Inflation (%) (Base 2007-08)

Period	CPI						Core Inflation				SPI**		WPI	
	General		Food		Non-food		NFNE*		Trimmed		YoY	MoM	YoY	MoM
	YoY	MoM	YoY	MoM	YoY	MoM	YoY	MoM	YoY	MoM				
Sep 11	10.5	1.0	9.9	1.6	10.9	0.6	10.6	0.7	11.7	0.6	7.6	1.3	17.0	0.2
Oct 11	11.0	1.4	11.7	1.6	10.4	1.3	10.4	1.4	11.7	1.0	6.5	0.8	15.4	0.4
Nov 11	10.2	0.3	10.0	0.1	10.3	0.4	10.4	0.6	11.5	0.5	3.8	0.7	12.0	-0.5
Dec 11	9.7	-0.7	9.5	-2.2	9.9	0.4	10.1	0.4	10.5	0.3	3.0	-2.0	8.3	-1.3
Jan 12	10.1	1.5	9.2	1.5	10.7	1.6	10.2	1.1	10.4	0.8	3.9	1.0	8.7	2.3
Feb 12	11.0	0.3	10.5	-0.7	11.5	1.0	10.6	0.7	10.7	0.5	5.2	-0.1	7.2	0.6
Mar 12	10.8	1.2	9.8	1.5	11.5	0.9	10.8	1.0	10.5	0.8	6.1	1.5	4.5	0.7
Apr 12	11.3	1.8	10.7	2.2	11.6	1.6	10.8	1.4	11.0	1.3	7.5	1.7	3.8	1.8
May 12	12.3	1.1	11.3	0.2	13.1	1.9	11.1	0.8	11.7	0.5	8.1	-0.1	7.1	2.1
Jun 12	11.3	0.0 ¹	10.3	-0.2	12.0	0.2	11.4	0.7	11.1	0.5	9.7	1.4	6.4	0.0 ²
Jul 12	9.6	-0.2	9.1	1.8	10.0	-1.7	11.3	1.0	10.7	0.7	7.7	0.5	7.2	0.4
Aug 12	9.1	0.9	8.5	0.9	9.4	0.9	10.8	0.3	10.6	0.4	8.2	1.3	7.7	1.0
Sep 12	8.8	0.8	7.6	0.7	9.7	0.9	10.4	0.4	10.4	0.5	8.0	1.2	7.8	0.3
Oct 12	7.7	0.4	5.8	-0.1	9.1	0.7	10.8	1.8	10.0	0.8	6.7	-0.4	7.5	0.1

*NFNE is non-food non-energy, ** SPI for quintile 1, ¹ Actual figure is 0.04, displayed in rounded figure

² Actual figure is -0.05. displayed in rounded figure

Table 1.1 : Period Average and YoY % Changes of Indices (Base 2007-08)

Index	Averages July-October % Changes			October over October % Changes		
	2012-13	2011-12	2010-11	2012-13	2011-12	2010-11
CPI	8.76	11.34	13.86	7.66	10.97	15.33
SPI	7.64	9.58	16.91	6.75	6.50	20.77
WPI	7.58	17.80	18.45	7.55	15.41	19.50

Figure 1: CPI Inflation YoY, Special Indices

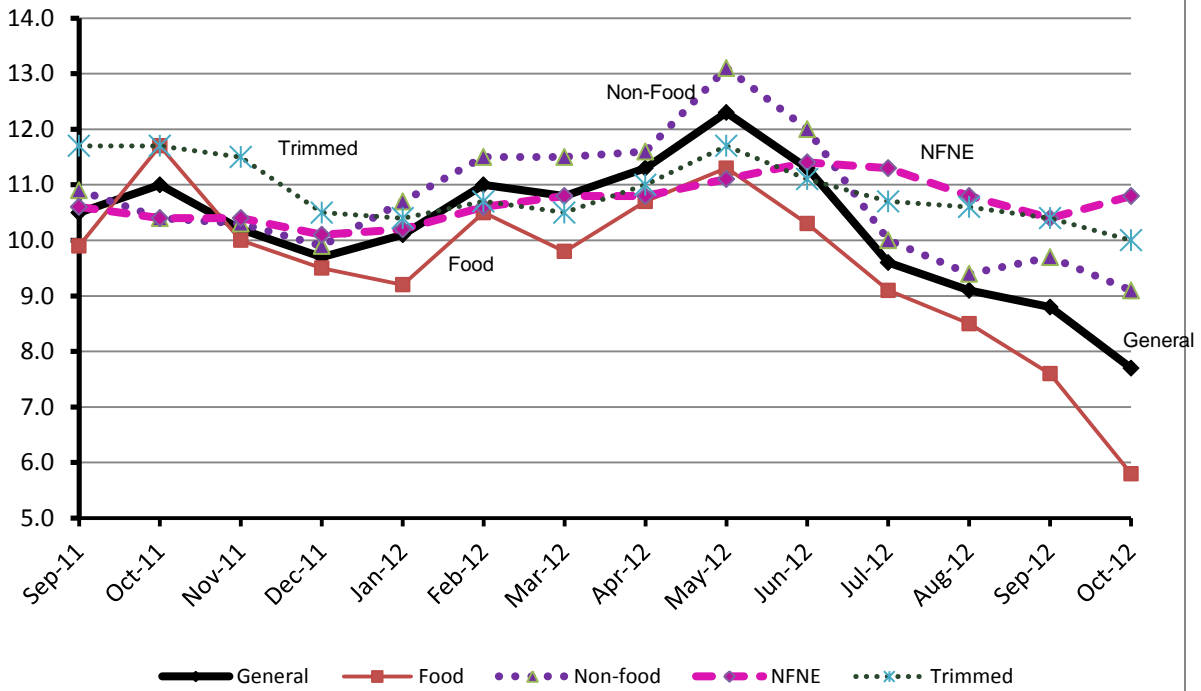
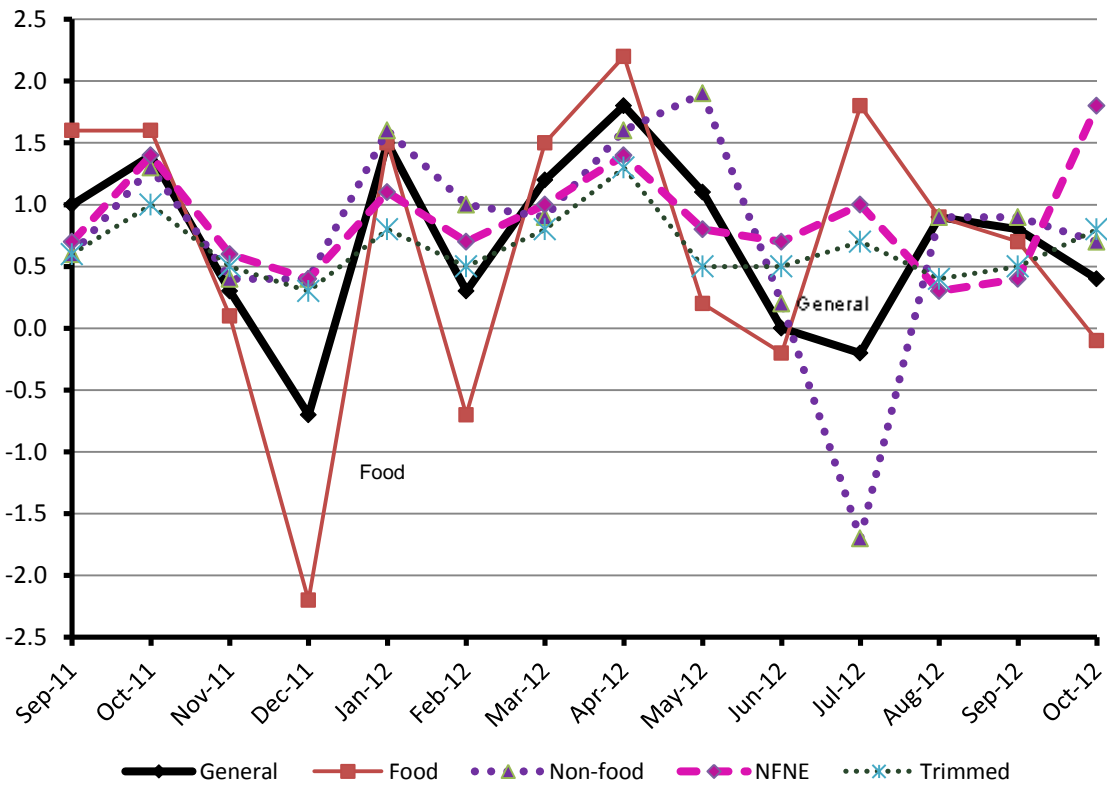


Figure 2: CPI Inflation MoM, Special Indices



II. Consumer Price Index (CPI)

The Consumer Price Index of October, 2012 has increased by 0.38% over September, 2012 and increased by 7.66% over corresponding month of last year.

Table 2 : Consumer Price Index by Group of Commodities and Services (Base 2007-08)

No	Group	Group Weight (%)	Indices			% Change Oct 2012 over		Impact (Adjusted) (In % points) Oct 2012 over	
			Oct 2012	Sep 2012	Oct 2011	Sep 2012	Oct 2011	Sep 2012	Oct 2011
	General	100.00	173.10	172.44	160.79	0.38	7.66	0.38	7.66
1.	Food & Non-alcoholic Bev.	34.83	193.56	193.80	184.02	-0.12	5.18	-0.03	1.88
	<i>Non-perishable Food Items</i>	29.84	191.92	191.44	178.75	0.25	7.37	0.06	2.16
	<i>Perishable Food Items</i>	4.99	203.34	207.89	215.56	-2.19	-5.67	-0.09	-0.28
2.	Alcoholic Bev. & Tobacco	1.41	190.43	190.34	161.57	0.05	17.86	0.00	0.25
3.	Clothing & Footwear	7.57	170.38	168.51	148.92	1.11	14.41	0.07	1.07
4.	Housing, Water, Electricity, Gas & Fuels	29.41	149.95	147.99	143.95	1.32	4.17	0.32	1.20
5.	Furnishing & Household Equipment Maintenance	4.21	176.84	175.40	154.18	0.82	14.70	0.03	0.61
6.	Health	2.19	155.13	153.94	135.22	0.77	14.72	0.01	0.32
7.	Transport	7.20	191.22	194.25	165.39	-1.56	15.62	-0.09	1.10
8.	Communication	3.22	123.68	123.56	123.37	0.10	0.25	0.00	0.01
9.	Recreation & Culture	2.03	165.94	165.24	140.30	0.42	18.28	0.01	0.36
10.	Education	3.94	154.48	153.87	140.35	0.40	10.07	0.01	0.39
11.	Restaurants & Hotels	1.23	200.30	197.85	180.73	1.24	10.83	0.01	0.13
12.	Miscellaneous	2.76	198.94	195.65	176.45	1.68	12.75	0.04	0.34

Main contributors to month-on-month and year-on-year percentage changes are given below and detail is given in Annexure A.

1. **Month-on-month** Top few commodities which varied from previous month i.e. September 2012 are given below:-

Food Items Increased: Eggs (17.32%), Onions (9.52%), Fish (3.31%), Honey (2.94%), Beans (2.01%), Fresh Vegetables (1.98%), Sugar (1.27%), Readymade Food (1.24%), Cereals (1.00%) and Bakery & Confectionary (0.95%).

Decreased: Fresh Fruits (9.04%), Tomatoes (7.48%), Chicken (5.81%), Pulse Moong (1.51%), Spices (1.36%) and Potatoes (0.86%).

Non-food Items Increased: Personal Equipments (2.92%), Woolen Readymade Garments (2.29%), Doctor (MBBS) Clinic Fee (1.97%), Cleaning & Laundry and House Rent (1.89% each), Kerosene oil (1.79%), Marriage Hall Charges (1.77%), Readymade Garments (1.61%) and Dopatta (1.52%).

Decreased: Motor Fuel (3.97%).

2. **Year-on-year:** Top few commodities which varied from previous year i.e. October 2011 are given below:-

Food Items Increased: Pulse Gram (46.46%), Besan (42.05%), Eggs (28.67%), Honey (22.27%), Beans (20.65%), Milk Powder (16.44%), Condiments (16.19%), Gram Whole (14.63%), Cooking Oil (13.79%), Milk Fresh (13.09%), Rice (12.95%) and Fish (11.44%).

Decreased: Tomatoes (30.04%), Sugar (28.90%), Gur (21.58%), Pulse Moong (17.05%), Chicken (13.85%), Pulse Mash (11.16%), Pulse Masoor (8.51%), Fresh Vegetables (8.24%), and Potatoes (1.13%).

Non-food Items Increased: Text Books (40.00%), Motor Vehicle Tax (25.73%), Doctor (MBBS) Clinic Fee (22.71%), Household Servant (22.53%), Utensils (21.10%), Woolen Readymade Garments (19.74%), Dopatta (19.53%) and Kerosene Oil (19.18%).

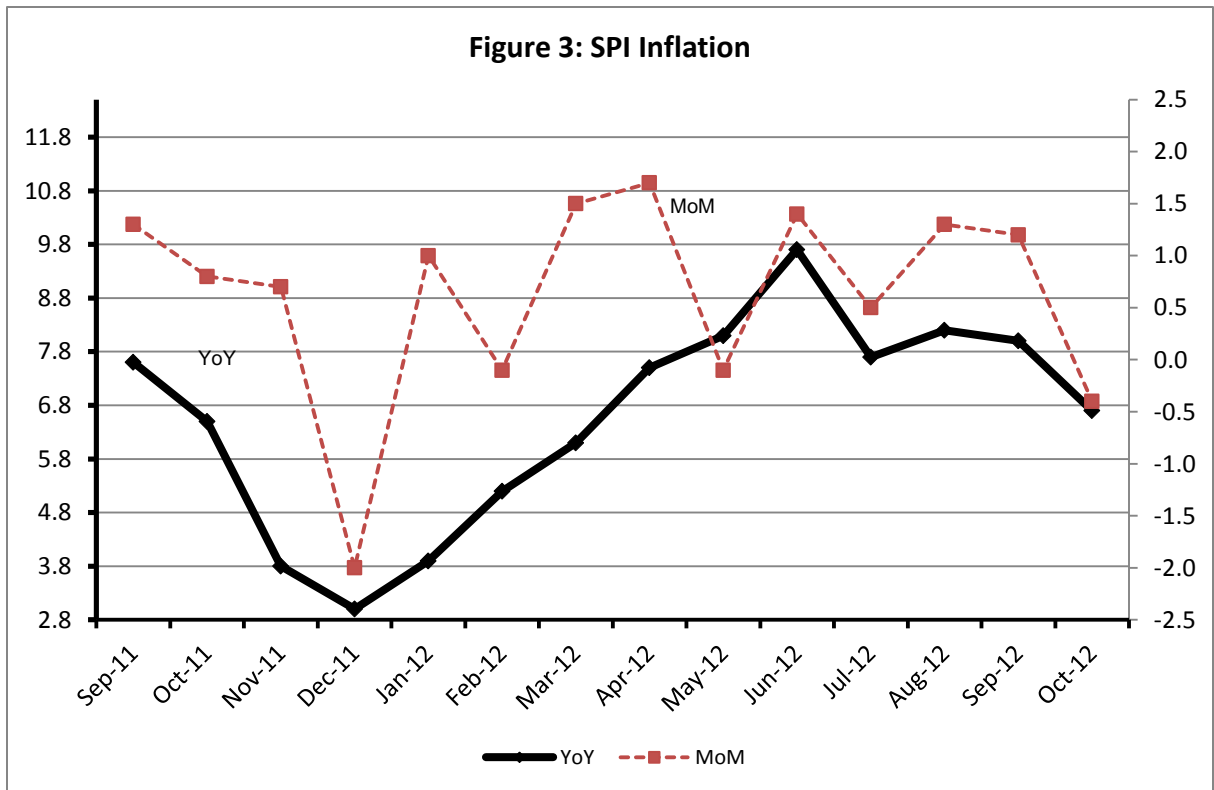
Decreased: Gas (42.09%).

III. Sensitive Price Indicator

Quintile-wise percentage changes YoY and MoM are given below in Table 3. The series from September 2011 to October 2012 is also graphed below in Figure 3.

Table 3 : Sensitive Price Indicator (Base 2007-08)						
Quintiles	Indices			% Change Oct 2012 over		
	Oct 2012	Sep 2012*	Oct 2011	Sep 2012	Oct 2011	
1	181.77	182.53	170.27	-0.42	6.75	
2	187.94	188.75	172.72	-0.43	8.81	
3	186.74	187.58	172.23	-0.45	8.42	
4	187.98	188.89	178.81	-0.48	5.13	
5	188.58	189.52	182.35	-0.50	3.42	
Combined	187.32	188.21	176.44	-0.47	6.17	

* Revised



IV. Wholesale Price Index

The Wholesale Price Index for October 2012 increased by 0.11% over September 2012. It increased by 7.55% over the corresponding month of the last year. YoY and MoM movements, from September 2011 to October 2012 are also graphed below in Figure 4.

Table 4 : Wholesale Price Index by Group of Commodities (Base 2007-08)

No.	Group	Group Weight (%)	Indices			% Change October 2012 over		Impact (Adjusted) (in %age points) Oct 2012 over	
			Oct 2012	Sep 2012	Oct 2011	Sep 2012	Oct 2011	Sep 2012	Oct 2011
	General	100.00	192.88	192.66	179.34	0.11	7.55	0.11	7.55
1.	Agriculture, Forestry & Fishery Products	25.77	194.13	194.63	189.95	-0.26	2.20	-0.03	0.84
2.	Ores & Minerals, Electricity, Gas & Water	12.04	207.79	207.86	170.17	-0.03	22.10	0.00	2.46
3.	Food Products, Beverages & Tobacco, Textiles, Apparel & Leather Products	31.11	185.83	184.53	177.12	0.70	4.92	0.14	1.64
	i. Food Products, Bev. & Tobacco	20.07	190.73	189.86	179.89	0.46	6.03	0.05	1.26
	ii. Textiles and Apparel	10.33	180.94	178.72	176.25	1.24	2.66	0.09	0.34
	iii. Leather Products	0.71	118.56	118.56	111.48	0.00	6.35	0.00	0.04
4.	Other Transportable Goods except Metal Products, Machinery & Equipments	22.37	206.53	207.14	186.58	-0.29	10.60	-0.02	2.18
5.	Metal Products, Machinery & Equipments	8.72	158.67	157.74	150.03	0.59	5.76	0.02	0.43

Main contributors to month-on-month and year-on-year percentage changes are given below and detail is given in Annexure B.

1. **Month-on-month** Top few commodities which varied from previous month i.e. September 2012 are given below:-

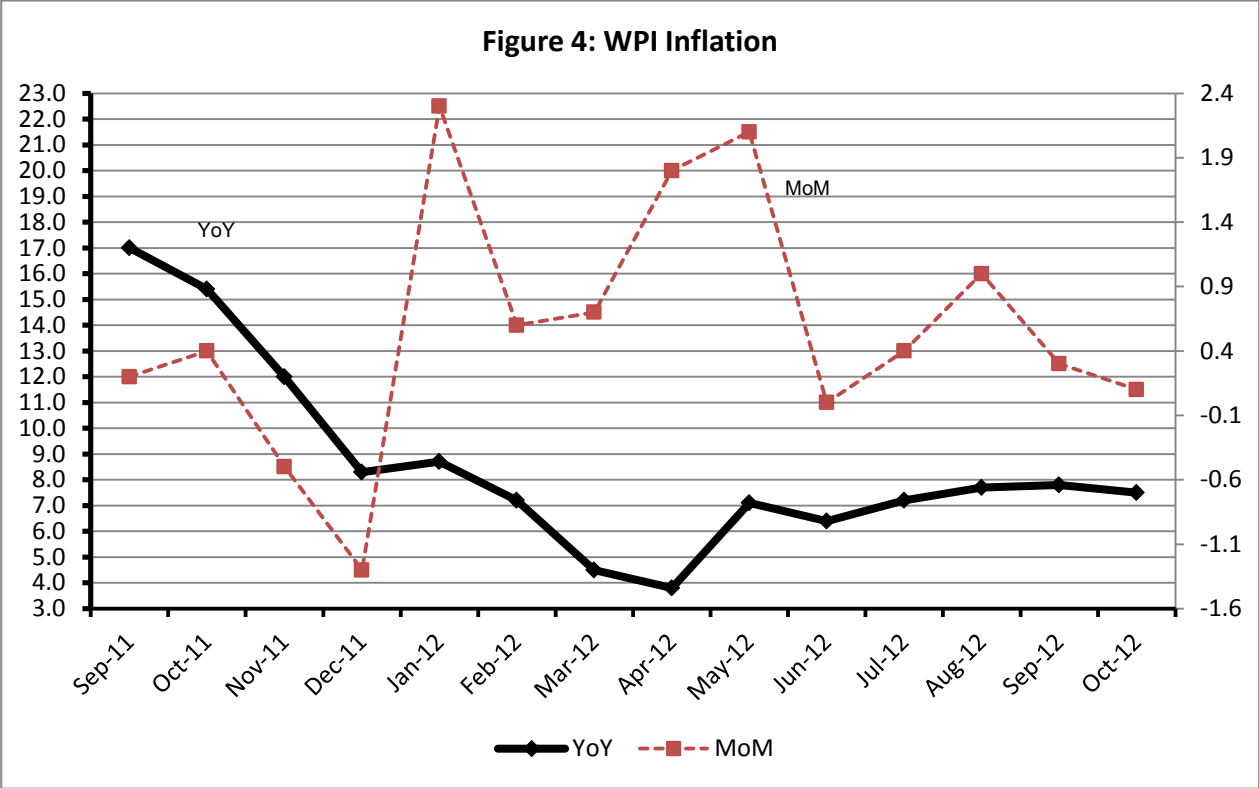
Increased: Hard Board (43.75%), stimulant and Spice Crops (22.47%), Woven Fabrics (12.91%), Eggs (12.60%), Soaps and Detergents (6.57%), Vegetables (6.19%), Hosiery Products (5.73%), Silk and Rayon Fabrics (5.37%), Oil Cakes and Readymade Garments (5.06% each).

Decreased: Fresh Fruits (19.41%), Jowar (6.51%), Poultry (5.77%), Maize (4.01%), Printing Paper (3.87%), Furnace Oil (3.67%), Potatoes (2.51%), Dry Fruits and Nuts (2.34%), Fiber Crops (2.08%) and Motor Spirit (1.73%).

2. **Year-on-year** Top ten commodities which varied from previous year i.e. September, 2011 are given below:-

Increased:Hard Board (69.11%), Coal not Agglomerated (56.25%), Spices (44.78%), Other Cereal Flour (43.55%), Electrical Energy (36.10%), Paints and Varnishes (32.59%), Bajra (29.00%) Footwears (26.63%), Fish live (26.38%) and Bed Sheets (25.16%).

Decreased:Synthetic Carpets (26.64%), Sugar refined (22.88%), Poultry (17.98%), Nylon Yarn (17.22%), Fiber Crops (15.02%), Cotton Seeds (14.90%),Edible Roots/Potatoes (11.83%), Tractors (10.46%) and Blended Yarn (7.42%).



Annexure A: Consumer Price Index Numbers by Commodity Groups & Commodities (2007 - 2008 = 100)

Item and Specification	Weight	Index Numbers			% Change in Oct 2012 Over			
		Oct 2012	Sep 2012	Oct 2011	Sep 2012	Oct 2011		
General	100.000	173.10	172.44	160.79	+	0.38	+	7.66
Food & Non-alcoholic Beverages	34.8343	193.56	193.80	184.02	-	0.12	+	5.18
01 Wheat	0.3477	169.62	169.28	154.09	+	0.20	+	10.08
02 Wheat Flour	4.1648	178.16	177.85	162.53	+	0.17	+	9.62
03 Wheat Product	0.0959	171.84	170.63	161.96	+	0.71	+	6.10
04 Besan	0.1500	236.28	236.24	166.33	+	0.02	+	42.05
05 Rice	1.5821	171.96	170.51	152.25	+	0.85	+	12.95
06 Cereals	0.1563	201.55	199.55	184.14	+	1.00	+	9.45
07 Bakery & Confectionary	1.1550	173.13	171.50	160.32	+	0.95	+	7.99
08 Nimco	0.4574	196.94	195.37	177.21	+	0.80	+	11.13
09 Meat	2.4303	218.61	217.68	200.24	+	0.43	+	9.17
10 Chicken	1.3596	144.25	153.14	167.45	-	5.81	-	13.85
11 Fish	0.2970	190.61	184.50	171.04	+	3.31	+	11.44
12 Milk Fresh	6.6800	215.09	214.85	190.19	+	0.11	+	13.09
13 Milk Products	0.6338	208.96	208.08	187.88	+	0.42	+	11.22
14 Milk Powder	0.1129	182.84	182.22	157.02	+	0.34	+	16.44
15 Eggs	0.4555	215.35	183.56	167.36	+	17.32	+	28.67
16 Mustard Oil	0.0952	161.41	160.47	150.50	+	0.59	+	7.25
17 Cooking Oil	1.7538	165.39	164.65	145.35	+	0.45	+	13.79
18 Vegetable Ghee	2.0714	162.88	163.96	156.57	-	0.66	+	4.03
19 Dry Fruits	0.2543	201.35	200.92	193.26	+	0.21	+	4.19
20 Fresh Fruits	1.8649	188.87	207.64	189.95	-	9.04	-	0.57
21 Pulse Masoor	0.2712	143.13	143.69	156.45	-	0.39	-	8.51
22 Pulse Moong	0.2336	219.90	223.28	265.11	-	1.51	-	17.05
23 Pulse Mash (Washed)	0.2098	193.39	193.99	217.69	-	0.31	-	11.16
24 Pulse Gram	0.2361	238.12	240.06	162.58	-	0.81	+	46.46
25 Gram Whole	0.1616	227.51	228.39	198.47	-	0.39	+	14.63
26 Beans	0.0269	211.70	207.52	175.46	+	2.01	+	20.65
27 Potatoes	0.4452	204.38	206.16	206.71	-	0.86	-	1.13
28 Onion	0.5093	245.99	224.60	237.79	+	9.52	+	3.45
29 Tomatoes	0.4172	155.77	168.36	222.66	-	7.48	-	30.04
30 Fresh Vegetables	1.7543	217.38	213.15	236.89	+	1.98	-	8.24
31 Sugar	1.0445	195.57	193.11	256.99	+	1.27	-	23.90
32 Gur	0.0220	224.78	223.96	286.63	+	0.37	-	21.58
33 Honey	0.0446	246.00	238.98	201.20	+	2.94	+	22.27
34 SweetMeat	0.2483	204.05	202.90	185.08	+	0.57	+	10.25
35 Beverages	1.1990	168.93	170.37	158.79	-	0.85	+	6.39
36 Jam, Tomato Ketchup & Pickles	0.2454	174.76	174.05	169.49	+	0.41	+	3.11
37 Condiments	0.2656	212.16	212.32	182.60	-	0.08	+	16.19
38 Spices	0.5441	262.27	265.88	244.45	-	1.36	+	7.29
39 Tea	0.8377	203.23	202.17	200.28	+	0.52	+	1.47
Alcoholic Beverages, Tobacco	1.4135	190.43	190.34	161.57	+	0.05	+	17.86
40 Cigarettes	1.3906	190.62	190.53	161.50	+	0.05	+	18.03
41 Betel Leaves & Nuts	0.0229	178.37	178.59	165.88	-	0.12	+	7.53
Clothing & Footwear	7.5708	170.38	168.51	148.92	+	1.11	+	14.41
42 Cotton Cloth	1.7286	158.22	155.96	147.69	+	1.45	+	7.13
43 Woolen Cloth	0.8759	190.45	188.17	166.84	+	1.21	+	14.15
44 Readymade Garments	0.9739	172.07	169.35	146.47	+	1.61	+	17.48
45 Woolen Readymade Garments	0.3964	168.96	165.18	141.11	+	2.29	+	19.74
46 Hosiery	0.5094	181.55	179.11	158.72	+	1.36	+	14.38
47 Dopatta	0.4412	186.02	183.24	155.63	+	1.52	+	19.53
48 Cleaning and Laundry	0.2110	190.15	186.62	160.44	+	1.89	+	18.52
49 Tailoring	0.8840	202.23	201.54	173.30	+	0.34	+	16.69
50 Footwear	1.5504	142.91	142.75	123.11	+	0.11	+	16.08

Annexure A: Consumer Price Index Numbers by Commodity Groups & Commodities (2007 - 2008 = 100)

Item and Specification	Weight	Index Numbers			% Change in			
		Oct 2012	Sep 2012	Oct 2011	Sep 2012	Oct 2011		
Housing, Water, Elec., Gas, Other	29.4149	149.95	147.99	143.95	+	1.32	+	4.17
51 House Rent	21.8149	139.61	137.02	131.37	+	1.89	+	6.27
52 Construction Input Items	0.5623	201.21	200.34	181.83	+	0.43	+	10.66
53 Construction Wage Rates	0.3331	170.75	169.83	150.91	+	0.54	+	13.15
54 Water Supply	0.4971	133.23	133.23	127.24	+	0.00	+	4.71
55 Electricity	4.3985	196.37	196.37	168.71	+	0.00	+	16.39
56 Gas	1.5756	134.34	134.34	232.00	+	0.00	-	42.09
57 Kerosene Oil	0.0057	274.09	269.26	229.98	+	1.79	+	19.18
58 Firewood Whole	0.2277	228.19	227.21	192.12	+	0.43	+	18.77
Furnished H.Hold Equip.& House	4.2082	176.84	175.40	154.18	+	0.82	+	14.70
59 Furniture	0.3315	167.17	165.35	146.78	+	1.10	+	13.89
60 Household Textiles	0.6489	173.23	171.59	150.62	+	0.96	+	15.01
61 Household Equipment	0.5936	156.81	156.33	147.52	+	0.31	+	6.30
62 Utensils	0.3212	174.91	173.70	144.44	+	0.70	+	21.10
63 Plastic Products	0.2547	174.34	174.14	161.30	+	0.11	+	8.08
64 Washing Soaps & Detergents	0.7893	191.20	190.56	172.01	+	0.34	+	11.16
65 Sewing Needle & Dr Cell	0.1496	150.69	149.01	135.17	+	1.13	+	11.48
66 Household Servant	1.0432	186.45	183.91	152.17	+	1.38	+	22.53
67 Marriage Hall Charges	0.0762	193.11	189.76	165.97	+	1.77	+	16.35
Health	2.1868	155.13	153.94	135.22	+	0.77	+	14.72
68 Drugs & Medicines	1.2667	137.39	137.28	123.86	+	0.08	+	10.92
69 Medical Equipments	0.0080	195.91	194.20	170.26	+	0.88	+	15.07
70 Doctor (MBBS) Clinic Fee	0.5904	192.89	189.17	157.19	+	1.97	+	22.71
71 Medical Tests	0.3217	154.65	153.85	138.73	+	0.52	+	11.48
Transport	7.2023	191.22	194.25	165.39	-	1.56	+	15.62
72 Motor Vehicles	0.6630	152.25	151.17	139.90	+	0.71	+	8.83
73 Motor Vehicle Accessories	0.2439	205.45	204.52	181.20	+	0.45	+	13.38
74 Motor Fuel	3.0269	193.27	201.27	162.74	-	3.97	+	18.76
75 Mechanical Service	0.4552	181.25	180.11	153.42	+	0.63	+	18.14
76 Motor Vehicle Tax	0.1099	152.02	152.02	120.91	+	0.00	+	25.73
77 Transport Services	2.7034	200.46	200.12	177.01	+	0.17	+	13.25
Communication	3.2198	123.68	123.56	123.37	+	0.10	+	0.25
78 Postal Services	0.0662	172.89	171.43	163.13	+	0.85	+	5.98
79 Communication & Apparatus	3.1536	122.65	122.56	122.54	+	0.07	+	0.09
Recreation & Culture	2.0227	165.94	165.24	140.30	+	0.42	+	18.28
80 Recreation & Culture	0.8634	121.85	121.68	115.10	+	0.14	+	5.86
81 Text Books	0.5706	230.23	230.23	164.45	+	0.00	+	40.00
82 Newspapers	0.1934	155.91	154.22	149.97	+	1.10	+	3.96
83 Stationery	0.3953	174.36	171.95	155.74	+	1.40	+	11.96
Education	3.9431	154.48	153.87	140.35	+	0.40	+	10.07
84 Education	3.9431	154.48	153.87	140.35	+	0.40	+	10.07
Restaurants & Hotels	1.2286	200.30	197.85	180.73	+	1.24	+	10.83
85 Readymade Food	1.2286	200.30	197.85	180.73	+	1.24	+	10.83
Miscellaneous Goods & Services	2.7550	198.94	195.65	176.45	+	1.68	+	12.75
86 Personal Care	1.4935	178.18	176.39	159.65	+	1.01	+	11.61
87 Cosmetics	0.3853	148.93	148.59	137.36	+	0.23	+	8.42
88 Blades	0.0322	171.51	169.80	156.13	+	1.01	+	9.85
89 Personal Equipments	0.8440	259.57	252.20	224.82	+	2.92	+	15.46

Annexure B: Wholesale Price Indices by Major Groups and Commodities

(2007 - 2008 = 100)

Item and Specification	Weight	Index Numbers			% Change in Oct 2012 Over			
		Oct 2012	Sep 2012	Oct 2011	Sep 2012	Oct 2012	Oct 2011	
General	100.0000	192.88	192.66	179.34	+	0.11	+	7.55
Agriculture Forestry &	25.7674	194.13	194.63	189.95	-	0.26	+	2.20
001 Wheat	0.6297	177.61	177.08	159.45	+	0.30	+	11.39
002 Maize	0.6764	167.05	174.03	155.85	-	4.01	+	7.19
003 Rice	2.4413	163.86	162.33	150.79	+	0.94	+	8.67
004 Sorghum/Jowar	0.0214	184.26	197.09	171.73	-	6.51	+	7.30
005 Millet/Bajra	0.0374	194.58	192.59	150.84	+	1.03	+	29.00
006 Vegetables	1.2441	269.17	253.47	289.33	+	6.19	-	6.97
007 Fresh Fruits	1.5144	183.93	228.22	164.50	+	19.41	+	11.81
008 Dry Fruits	0.2478	173.49	173.12	185.82	+	0.21	-	6.64
009 Cotton Seeds	1.1511	170.28	162.42	200.09	+	4.84	-	14.90
010 Other Oil Seeds	0.0722	183.21	179.64	166.79	+	1.99	+	9.84
011 Edible Roots/Potatoes	0.2540	196.16	201.22	222.49	-	2.51	-	11.83
012 Stimulant and Spice Crops	0.1634	204.46	166.95	206.39	+	22.47	-	0.94
013 Pulses	0.4901	213.03	216.53	209.86	-	1.62	+	1.51
014 Sugar Crops	1.0725	267.92	267.92	271.70	+	0.00	-	1.39
015 Fibre Crops	5.3169	176.84	180.60	208.10	-	2.08	-	15.02
016 Unmanufactured Tobacco	0.0742	168.99	168.46	167.75	+	0.31	+	0.74
017 Poultry	0.5633	143.42	152.21	174.87	-	5.77	-	17.98
018 Raw Milk from Bovine Animals	7.0279	213.76	208.85	187.04	+	2.35	+	14.29
019 Eggs	0.5034	217.03	192.74	173.63	+	12.60	+	25.00
020 Raw Animal Materials/Wool	0.0351	136.65	135.45	135.67	+	0.89	+	0.72
021 Hides and Fur Skins, Raw	0.4834	137.17	137.35	124.28	-	0.13	+	10.37
022 Fuel Wood in Logs	0.0179	205.02	204.59	182.08	+	0.21	+	12.60
023 Fish Live Fresh or Chilled	1.7295	176.68	176.07	139.80	+	0.35	+	26.38
Ores/Minerals, Elec., Gas &	12.0389	207.79	207.86	170.17	-	0.03	+	22.11
024 Coal not Agglomerated	0.7508	196.08	196.08	125.49	+	0.00	+	56.25
025 Natural Gas Liquified	5.7385	192.25	192.41	180.08	-	0.08	+	6.76
026 Salt and Pure Sodium Chloride	0.0584	164.54	162.41	150.55	+	1.31	+	9.29
027 Electrical Energy	5.4912	226.10	226.10	166.13	+	0.00	+	36.10
Food, Beverages, Tobacco, Tea	31.1122	185.83	184.53	177.12	+	0.70	+	4.92
Food Products, Beverages	20.0718	190.73	189.86	179.89	+	0.46	+	6.03
028 Meat of Animals	3.4559	227.09	226.71	209.72	+	0.17	+	8.28
029 Vegetables and Fruit Juice	0.0058	185.05	183.67	175.05	+	0.75	+	5.71
030 Dried Fruits and Nuts	0.1733	212.04	217.12	193.71	-	2.34	+	9.46
031 Fruit Juices	0.3880	157.15	156.65	155.59	+	0.32	+	1.00
032 Vegetable Oils Refined	1.9242	155.32	157.46	152.38	-	1.36	+	1.93
033 Vegetable Ghee	1.5632	141.43	143.63	140.73	-	1.53	+	0.50
034 Oil Cakes	0.9611	172.81	164.48	159.54	+	5.06	+	8.32
035 Processed Liquid Milk	4.4437	208.43	208.43	176.43	+	0.00	+	18.14
036 Milk and Cream in Solid Form	0.0316	170.79	171.00	170.87	-	0.12	-	0.05
037 Ice Cream	0.0047	167.68	170.00	154.79	-	1.36	+	8.33
038 Dairy Products N.E.C	0.0117	202.69	204.36	176.03	-	0.82	+	15.15
039 Wheat Flour	2.3034	164.13	162.40	149.75	+	1.07	+	9.60
040 Other Cereal Flour	0.0604	208.22	207.98	145.05	+	0.12	+	43.55
041 Sugar Refined	1.7975	204.34	198.63	264.98	+	2.87	-	22.88
042 Chocolate	0.0139	99.19	99.19	100.26	+	0.00	-	1.07
043 Sugar Confectionary	0.0738	100.40	100.40	100.89	+	0.00	-	0.49
044 Coffee and Tea	0.7303	192.33	190.66	188.84	+	0.88	+	1.85
045 Spices	0.1449	304.68	307.94	210.44	-	1.06	+	44.78
046 Other Food Products	0.0336	323.46	328.55	295.00	-	1.55	+	9.65
047 Mineral Water	0.0207	168.29	166.05	161.35	+	1.35	+	4.30
048 Beverages	0.6303	137.86	135.30	132.14	+	1.89	+	4.33
049 Tobacco Products	1.2998	208.80	208.80	175.88	+	0.00	+	18.72
Textiles & Apparels	10.3289	180.94	178.72	176.25	+	1.24	+	2.66
050 Cotton Yarn	5.2491	200.08	200.46	202.80	-	0.19	-	1.34
051 Nylon Yarn	0.1719	176.45	176.45	213.15	+	0.00	-	17.22
052 Blended Yarn	0.1689	190.06	188.46	205.30	+	0.85	-	7.42
053 Woven Fabrics	0.0128	196.74	174.25	161.84	+	12.91	+	21.56
054 Cotton Fabrics	0.6343	173.68	172.55	163.06	+	0.65	+	6.51
055 Other Fabrics	1.1016	165.62	164.13	150.74	+	0.91	+	9.87
056 Silk and Reyon Fabrics	0.7350	151.23	143.52	137.41	+	5.37	+	10.06
057 Towels	0.1235	200.68	193.36	182.14	+	3.79	+	10.18

Annexure B: Wholesale Price Indices by Major Groups and Commodities

(2007 - 2008 = 100)

Item and Specification	Weight	Index Numbers			% Change in Oct 2012 Over			
		Oct 2012	Sep 2012	Oct 2011	Sep 2012	Oct 2012	Oct 2011	
058 Blankets	0.0029	172.59	172.59	144.97	+	0.00	+	19.05
059 Bed Sheets	0.0913	197.94	194.91	158.15	+	1.55	+	25.16
060 Quilts	0.0019	147.05	147.05	142.42	+	0.00	+	3.25
061 Woolen Carpets	0.0383	106.55	106.55	106.55	+	0.00	+	0.00
062 Synthetic Carpets	0.0566	113.15	113.15	154.24	+	0.00	-	26.64
063 Hosiery Products	0.8832	173.15	163.76	149.42	+	5.73	+	15.88
064 Readymade Garments	1.0576	135.15	128.64	122.59	+	5.06	+	10.25
Leather Products	0.7115	118.56	118.56	111.48	+	0.00	+	6.35
065 Leather without Hair	0.2973	109.83	109.83	109.34	+	0.00	+	0.45
066 Other Leather N.E.C	0.2567	122.57	122.57	120.10	+	0.00	+	2.06
067 Footwears	0.1575	128.50	128.50	101.48	+	0.00	+	26.63
Other Transportable Goods	22.3659	206.53	207.14	186.58	-	0.29	+	10.69
068 Timber	0.0165	148.07	148.07	136.04	+	0.00	+	8.84
069 Printing Paper	0.4279	147.96	153.92	118.38	-	3.87	+	24.99
070 Hard Board	0.1579	239.58	166.67	141.67	+	43.75	+	69.11
071 Coke	0.2797	163.45	163.45	155.28	+	0.00	+	5.26
072 Motor Spirit	1.5336	174.17	177.23	150.24	-	1.73	+	15.93
073 Diesel Oil	5.2664	268.79	272.24	228.14	-	1.27	+	17.82
074 Kerosine Oil	0.2151	273.51	275.06	230.92	-	0.56	+	18.44
075 Furnace Oil	3.2664	179.20	186.02	183.76	-	3.67	-	2.48
076 Mobil Oil	0.7114	182.64	179.59	169.72	+	1.70	+	7.61
077 Chemicals	1.7720	149.01	148.29	144.28	+	0.49	+	3.28
078 Dyeing Material	0.1539	104.26	104.26	106.14	+	0.00	-	1.77
079 Fertilizers	2.8657	259.86	258.16	252.74	+	0.66	+	2.82
080 Pesticides	0.2763	197.49	197.39	164.86	+	0.05	+	19.79
081 Insecticides	0.1276	117.46	117.64	126.62	-	0.15	-	7.23
082 Paints and Varnishes	0.1916	237.29	233.80	178.96	+	1.49	+	32.59
083 Medicines	1.1428	139.44	139.44	113.92	+	0.00	+	22.40
084 Soaps and Detergents	0.8168	168.39	158.01	146.21	+	6.57	+	15.17
085 Auto Tyres	0.2703	180.73	180.62	167.32	+	0.06	+	8.01
086 Plastic Products	0.4550	191.31	191.31	179.46	+	0.00	+	6.60
087 Glass sheets	0.2089	190.93	190.93	167.73	+	0.00	+	13.83
088 Other Glass Articles	0.1635	189.33	189.11	195.83	+	0.12	-	3.32
089 Ceramics and Sanitary Fixture	0.0244	157.32	157.32	132.70	+	0.00	+	18.55
090 Bricks, Blocks and Tiles	0.1566	172.14	172.01	162.96	+	0.08	+	5.63
091 Cement	1.8145	183.17	180.43	155.02	+	1.52	+	18.16
092 Bed Foam	0.0006	140.00	140.00	123.17	+	0.00	+	13.66
093 Matches	0.0505	126.70	122.82	115.66	+	3.16	+	9.55
Metal Product, Machinery &	8.7156	158.67	157.74	150.03	+	0.59	+	5.76
094 Pig Iron	0.0593	128.97	128.97	128.97	+	0.00	+	0.00
095 Steel Bar and Sheets	1.4022	135.96	137.60	131.03	-	1.19	+	3.76
096 Pipe Fittings	0.0780	141.47	141.47	139.65	+	0.00	+	1.30
097 Steel Products	0.3879	161.94	160.60	146.99	+	0.83	+	10.17
098 Engines and Motors	0.0046	109.07	109.07	109.07	+	0.00	+	0.00
099 Vacuum Pumps	0.0155	115.39	115.39	115.39	+	0.00	+	0.00
100 Air Conditioners	0.0049	172.67	172.67	163.43	+	0.00	+	5.65
101 Cultivators	0.0551	184.66	184.66	184.66	+	0.00	+	0.00
102 Chuff Cutter	0.1293	138.54	138.54	131.08	+	0.00	+	5.69
103 Tractors	0.0028	161.96	161.96	180.89	+	0.00	-	10.46
104 Lathe Machines	0.0525	147.68	147.68	147.51	+	0.00	+	0.12
105 Concrete Mixture	0.0107	138.83	138.83	138.83	+	0.00	+	0.00
106 Fridge,WashM,SewM,Fans,Iro	1.1645	163.68	163.64	162.49	+	0.02	+	0.73
107 Electric Wires	0.0912	159.57	159.57	157.53	+	0.00	+	1.29
108 Lighting Equipments	1.4431	145.21	144.85	140.57	+	0.25	+	3.30
109 Radio and Television	0.1843	126.46	126.46	129.24	+	0.00	-	2.15
110 Motor Vehicles	0.0244	167.70	167.04	154.47	+	0.40	+	8.56
111 Motorcycles	0.2570	125.19	125.19	121.72	+	0.00	+	2.85
112 Bicycles	3.3483	177.87	175.08	162.17	+	1.59	+	9.68

