



Monthly Review on Price Indices



May, 2012
(Base 2007-08)

Government of Pakistan
Statistics Division
Pakistan Bureau of Statistics
Islamabad

I. Inflation in Brief

1. CPI inflation, General, increased by 12.3% on year-on-year basis in May 2012 as compared to 11.3% in the previous month and 12.6% in May 2011. On month-on-month basis, it increased by 1.1% in May 2012 as compared to an increase by 1.8% in the previous month and an increase by 0.2% in May 2011.
2. Core inflation measured by non-food non-energy CPI (Core NFNE) increased by 11.1% in May 2012 as compared to 10.8% in Apr 2012(YoY) and by 9.7 % in May 2011. Core NFNE inflation on MoM basis increased by 0.8% in May 2012 as compared to 1.4% a month earlier and 0.5 %in May 2011.
3. Core inflation, measured by 20% weighted trimmed mean CPI (Core Trimmed) increased by 11.7% in May 2012 and by 11.0% in Apr 2012 (YoY) which increased by 12.1% in May 2011. Core Trimmed inflation has increased by 0.5% on MoM basis in May 2012 compared with 1.3% in Apr 2012 which increased by 0.5% in May 2011.
4. SPI inflation on YoY basis increased by 8.1% in May 2012 compared with 7.5% a month earlier and 13.7% in May 2011. On MoM basis, it decreased by 0.1% in May 2012 as compared to an increase by 1.7% a month earlier and a decrease of 0.7% in May 2011.
5. WPI inflation on YoY basis increased to 7.1% in May 2012 compared with 3.8% a month earlier and 22.3% in May 2011. WPI inflation on MoM basis increased by 2.1% in May 2012 as compared to an increase of 1.8% a month earlier and a decrease of 1.0% in May 2011.
6. Figures 1 and 2 show graphically the data of Table 1. Table 1.1 shows "Period Average" and "YoY" percent changes in indices of three years.

Table 1: Inflation (%) (Base 2007-08)

Period	CPI						Core Inflation				SPI**		WPI	
	General		Food		Non-food		NFNE*		Trimmed		YoY	MoM	YoY	MoM
	YoY	MoM	YoY	MoM	YoY	MoM	YoY	MoM	YoY	MoM				
Apr 11	12.5	1.4	16.5	1.3	9.8	1.5	9.5	1.4	12.0	1.0	14.2	0.3	24.9	2.5
May 11	12.6	0.2	15.8	-0.3	10.5	0.6	9.7	0.5	12.1	0.5	13.7	-0.7	22.3	-1.0
Jun 11	13.3	1.0	15.8	0.7	11.6	1.2	9.8	0.5	12.4	0.7	13.0	-0.1	22.8	0.6
Jul 11	12.4	1.3	17.1	2.9	9.2	0.1	9.5	1.2	11.9	1.1	13.1	2.4	20.3	-0.4
Aug 11	11.6	1.4	13.2	1.4	10.4	1.4	10.0	0.8	12.5	0.8	11.6	0.8	18.7	0.6
Sep 11	10.5	1.0	9.9	1.6	10.9	0.6	10.6	0.7	11.7	0.6	7.6	1.3	17.0	0.2
Oct 11	11.0	1.4	11.7	1.6	10.4	1.3	10.4	1.4	11.7	1.0	6.5	0.8	15.4	0.4
Nov 11	10.2	0.3	10.0	0.1	10.3	0.4	10.4	0.6	11.5	0.5	3.8	0.7	12.0	-0.5
Dec 11	9.7	-0.7	9.5	-2.2	9.9	0.4	10.1	0.4	10.5	0.3	3.0	-2.0	8.3	-1.3
Jan 12	10.1	1.5	9.2	1.5	10.7	1.6	10.2	1.1	10.4	0.8	3.9	1.0	8.7	2.3
Feb 12	11.0	0.3	10.5	-0.7	11.5	1.0	10.6	0.7	10.7	0.5	5.2	-0.1	7.2	0.6
Mar 12	10.8	1.2	9.8	1.5	11.5	0.9	10.8	1.0	10.5	0.8	6.1	1.5	4.5	0.7
Apr 12	11.3	1.8	10.7	2.2	11.6	1.6	10.8	1.4	11.0	1.3	7.5	1.7	3.8	1.8
May 12	12.3	1.1	11.3	0.2	13.1	1.9	11.1	0.8	11.7	0.5	8.1	-0.1	7.1	2.1

*NFNE is non-food non-energy, ** SPI for quintile 1

Table 1.1 : Period Average and YoY % Changes of Indices (Base 2007-08)

Index	Averages July-May % Changes			May over May % Changes		
	2011-12	2010-11	2009-10	2011-12	2010-11	2009-10
CPI	10.97	13.69	9.95	12.29	12.65	12.32
SPI	6.84	16.91	12.79	8.08	13.74	15.43
WPI	10.83	21.10	13.43	7.06	22.28	19.55

Figure 1: CPI Inflation YoY, Special Indices

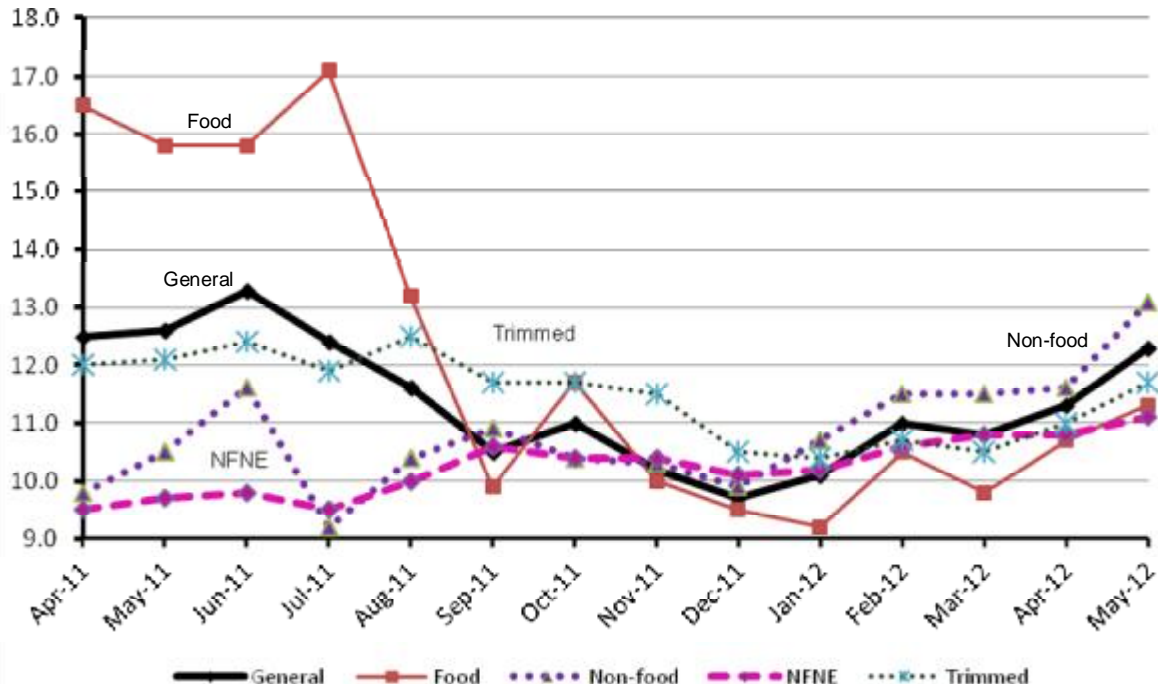
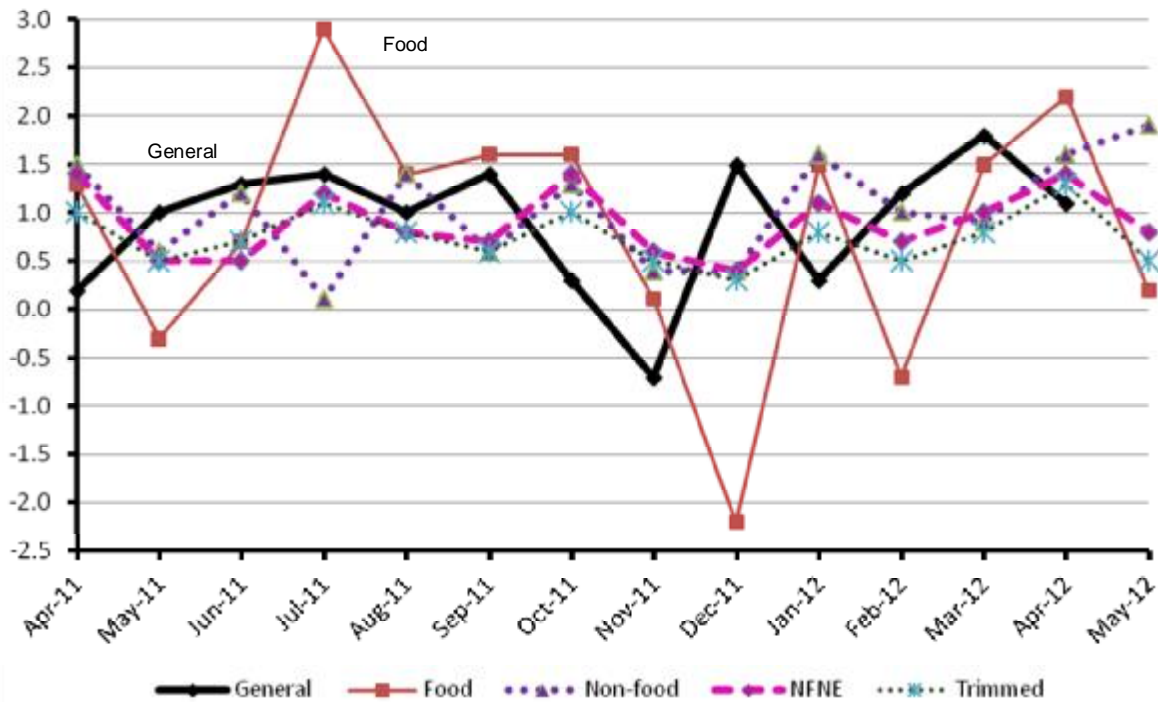


Figure 2: CPI Inflation MoM, Special Indices



II. Consumer Price Index (CPI)

The Consumer Price Index of May, 2012 has increased by 1.15% over Apr, 2012 and increased by 12.29% over corresponding month of last year.

Table 2 : Consumer Price Index by Group of Commodities and Services (Base 2007-08)

No	Group	Group Weight (%)	Indices			% Change May 2012 over		Impact (Adjusted) (In % points) May 2012 over	
			May 2012	Apr 2012	May 2011	Apr 2012	May 2011	Apr 2012	May 2011
	General	100.00	169.93	168.00	151.33	1.15	12.29	1.15	12.29
1.	Food & Non-alcoholic Bev.	34.83	188.29	188.00	169.26	0.15	11.24	0.05	3.93
	<i>Non-perishable Food Items</i>	29.84	187.75	186.60	170.43	0.61	10.16	0.16	3.03
	<i>Perishable Food Items</i>	4.99	191.52	196.36	162.28	-2.46	18.02	-0.11	0.90
2.	Alcoholic Bev. & Tobacco	1.41	169.22	168.74	151.57	0.28	11.64	0.00	0.16
3.	Clothing & Footwear	7.57	163.22	161.68	140.69	0.95	16.01	0.06	1.21
4.	Housing, Water, Electricity, Gas & Fuels	29.41	153.27	149.07	138.27	2.82	10.85	0.73	3.19
5.	Furnishing & Household Equipment Maintenance	4.21	171.52	168.78	141.13	1.62	21.53	0.06	0.91
6.	Health	2.19	144.07	141.74	128.55	1.64	12.07	0.03	0.26
7.	Transport	7.20	185.93	185.94	158.71	-0.01	17.15	0.00	1.23
8.	Communication	3.22	122.38	122.36	123.74	0.02	-1.10	0.00	-0.04
9.	Recreation & Culture	2.03	163.95	146.51	137.72	11.90	19.05	0.21	0.39
10.	Education	3.94	151.31	151.36	134.85	-0.03	12.21	0.00	0.48
11.	Restaurants & Hotels	1.23	193.79	192.76	174.47	0.53	11.07	0.01	0.14
12.	Miscellaneous	2.76	188.15	188.70	163.19	-0.29	15.30	-0.01	0.42

Main contributors to month-on-month and year-on-year percentage changes are given below and detail is given in Annexure A.

1. **Month-on-month** Top few commodities which varied from previous month i.e. Apr 2012 are given below:-

Food Items Increased: Eggs (15.79%), Fresh Fruits (14.59%), Pulse Gram (12.29%), Besan (8.43%), Potatoes (5.10%), Rice (4.19%), Gram Whole (3.27%), Milk Powder (2.16%), Beans (2.00%), Nimco (1.87%), Honey (1.67%), Bakery & Confectionery (1.58%), Dry Fruits (1.34%), Milk Products (1.29%), Betel Leaves & Nuts (1.22%), Milk Fresh & Cooking Oil (1.10% each).

Decreased: Tomatoes (56.37%), Fresh Vegetables (11.83%), Onion(7.82%), Wheat (2.88%), Sugar (2.23%), Gur (1.25%) and Wheat Flour (1.21%).

Non-food Items Increased: Text Books (34.06%), Electricity(16.39%), Household Servant (2.53%), Doctor(MBBS) Clinic Fee (2.37%), Utensils (1.95%), Dopatta (1.80%), Blades (1.73%), Tailoring (1.69%), Stationery (1.63%), Hosiery (1.60%), Household Textiles (1.52%), Cleaning & Laundry (1.52%), Construction Wage Rate (1.47%), Drugs & Medicines (1.38%) , Washing Soap & Detergents (1.35%), Furniture(1.18%), Medical Equipments(1.16%), Readymade Garments (1.04%) & Household Equipment (1.03%).

Decreased: Personal Equipments (1.32%).

2. **Year-on-year** Top ten commodities which varied from previous year i.e. May 2011 are given below:-

Food Items Increased: Pulse Gram (57.32%), Besan (45.64%), Gram Whole (37.48%), Fresh Fruits (35.24%), Eggs (34.25%), Chicken (33.48%), Onion (32.69%), Condiments (22.79%), Fish (20.34%) and Tomatoes (17.98%).

Decreased: Sugar (16.04%), Gur (13.40%), Pulse Moong (10.74%), Pulse Masoor (10.70%), Pulse Mash (washed) (9.52%), Potatoes (3.86%) and Fresh Vegetables (1.56%).

Non-food Items Increased: Motor Vehicle Tax (48.05%), Text Books (42.70%), Household Servant (39.15%), Gas (29.41%), Firewood Whole (25.95%), Motor Fuel (24.33%), Dopatta (21.42%), Woolen Cloth (21.05%), Mechanical Service (20.58%) and Doctor (MBBS) Clinic Fee (20.23%).

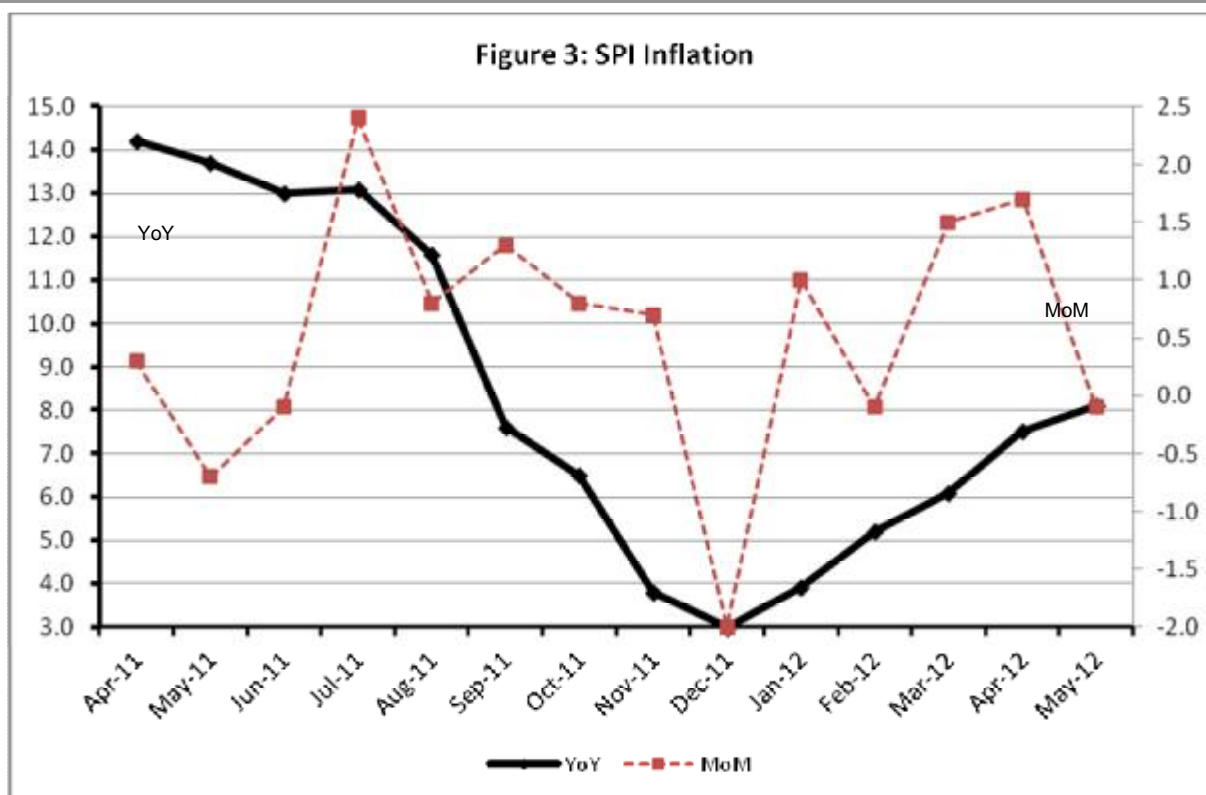
Decreased: Communication & Apparatus (1.24%).

III. Sensitive Price Indicator

Quintile-wise percentage changes YoY and MoM are given below in Table 3. The series from Apr 2011 to May 2012 is also graphed below in Figure 3.

Table 3 : Sensitive Price Indicator (Base 2007-08)

Quintiles	Indices			% Change May 2012 over	
	May 2012	Apr 2012	May 2011	Apr 2012	May 2011
1	174.72	174.97	161.66	-0.14	8.08
2	179.47	178.27	164.10	0.67	9.37
3	178.88	178.05	163.85	0.47	9.17
4	187.24	186.59	169.92	0.35	10.19
5	193.03	192.12	173.82	0.47	11.05
Combined	184.88	184.03	167.98	0.46	10.06



IV. Wholesale Price Index

The Wholesale Price Index for May 2012 increased by 2.15% over Apr 2012. It increased by 7.06% over the corresponding month of the last year. YoY and MoM movements, from Apr 2011 to May 2012 are also graphed below in Figure 4.

Table 4 : Wholesale Price Index by Group of Commodities (Base 2007-08)

No.	Group	Group Weight (%)	Indices			% Change May 2012 over		Impact (Adjusted) (in %age points) May 2012 over	
			May 2012	Apr 2012	May 2011	Apr 2012	May 2011	Apr 2012	May 2011
	General	100.00	189.46	185.48	176.97	2.15	7.06	2.15	7.06
1.	Agriculture, Forestry & Fishery Products	25.77	185.78	183.68	189.83	1.14	-2.13	0.28	0.81
2.	Ores & Minerals, Electricity, Gas & Water	12.04	214.79	188.10	162.41	14.19	32.25	1.68	2.80
3.	Food Products, Beverages & Tobacco, Textiles, Apparel & Leather Products	31.11	179.06	177.32	177.44	0.98	0.91	0.27	0.72
	i. Food Products, Bev. & Tobacco	20.07	181.46	180.69	171.15	0.43	6.02	0.09	0.97
	ii. Textiles and Apparel	10.33	178.57	174.83	194.31	2.14	-8.10	0.18	-0.30
	iii. Leather Products	0.71	118.56	118.56	109.67	0.00	8.11	0.00	0.04
4.	Other Transportable Goods except Metal Products, Machinery & Equipments	22.37	207.39	208.92	182.34	-0.73	13.74	-0.10	2.18
5.	Metal Products, Machinery & Equipments	8.72	156.46	156.18	143.65	0.18	8.92	0.02	0.56

Main contributors to month-on-month and year-on-year percentage changes are given below and detail is given in Annexure B.

1. **Month-on-month** Top few commodities which varied from previous month i.e. Apr 2012 are given below:-

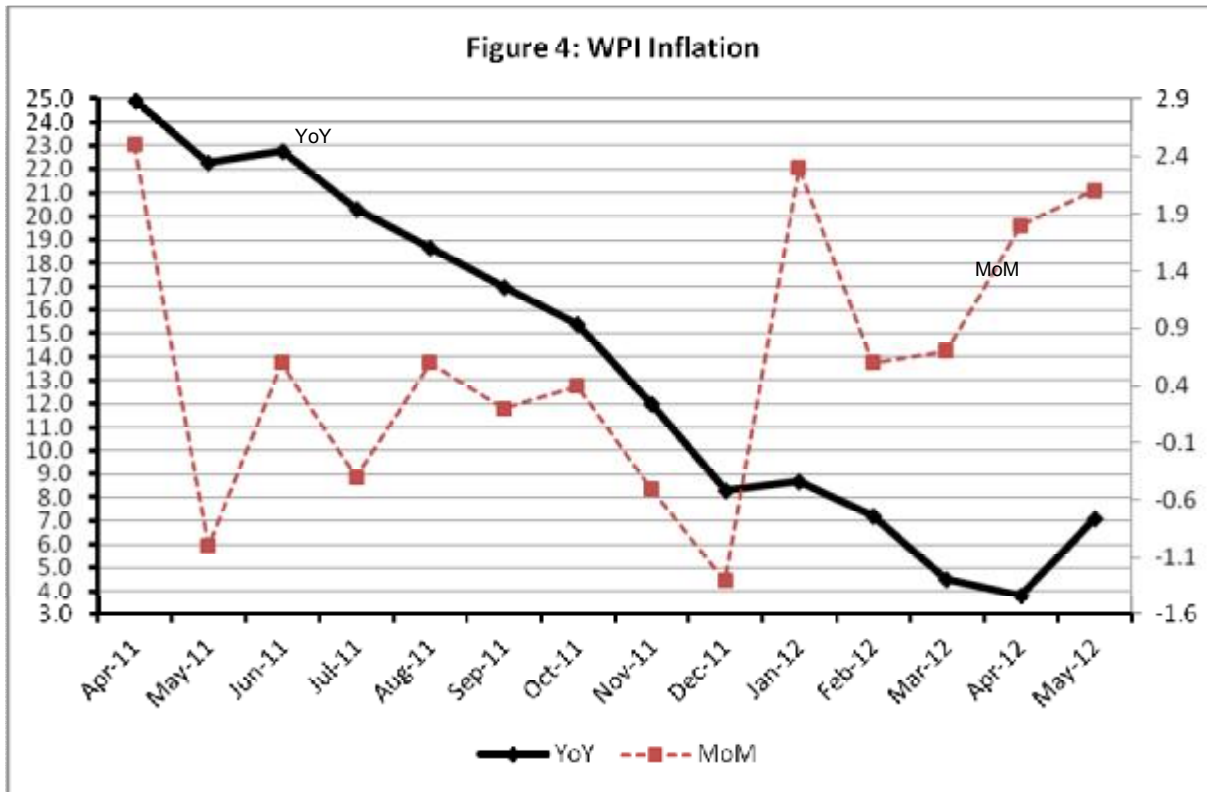
Increased: Electrical Energy (36.10%), Fresh Fruits (28.02%), Eggs (19.37%), Other Cereal Flour (11.93%), Edible Roots/Potatoes (11.74%), Hard Board (6.58%), Printing Paper (6.53%), Paints & Varnishes (4.61%), Coal not Agglomerated (4.35%), Cotton Yarn and Millet/Bajra (3.45% each) and Rice (3.33%).

Decreased: Vegetables (18.87%), Poultry (14.01%), Nylon Yarn (6.05%), Furnace Oil (4.44%), Sugar Refined (3.52%), Insecticides (3.09%), Stimulant and Spice Crops (2.99%), Wheat (2.81%), Sugar Crops (1.76%), Fibre Crops (1.33%), Natural Gas Liquefied (1.15%), Dry Fruits (1.10%) and Fertilizers (0.85%).

2. **Year-on-year** Top ten commodities which varied from previous year i.e. May 2011 are given below:-

Increased: Other Cereal Flour (56.90%), Fresh Fruits (51.77%), Coal not Agglomerated (50.00%), Spices (48.87%), Printing Paper (35.04%), Hard Board (35.00%), Sugar Crops (33.13%), Eggs (32.91%), Electrical Energy (32.45%) and Natural Gas Liquid (30.33%).

Decreased: Fiber Crops (41.29%), Stimulant and Spice Crops (21.34%), Edible Roots and Potatoes (20.92%), Sugar Refined (18.44%), Cotton Yarn (18.27%), Blended Yarn (16.82%), Oil Cakes (14.33%), Milk & Cream in Solid Form (11.79%), Cotton Seeds (9.96%) and Nylon Yarn (8.89%).



Annexure A: Consumer Price Index Numbers by Commodity Groups & Commodities (2007 - 2008 = 100)

Item and Specification	Weight	Index Numbers			% Change in		May 2012 Over	
		May 2012	Apr 2012	May 2011	Apr 2012	May 2011		
General	99.7697	169.93	168.00	151.33	+	1.15	+	12.29
Food & Non-alcoholic Beverages	34.6040	188.29	188.00	169.26	+	0.15	+	11.24
01 Wheat	0.3477	158.80	163.51	145.92	-	2.88	+	8.83
02 Wheat Flour	4.1648	166.09	168.13	160.94	-	1.21	+	3.20
03 Wheat Product	0.0959	164.11	164.35	159.60	-	0.15	+	2.83
04 Besan	0.1500	233.03	214.92	160.00	+	8.43	+	45.64
05 Rice	1.5821	165.29	158.65	140.58	+	4.19	+	17.58
06 Cereals	0.1563	193.20	192.61	175.65	+	0.31	+	9.99
07 Bakery & Confectionary	1.1550	168.77	166.14	153.49	+	1.58	+	9.96
08 Nimco	0.4574	193.14	189.59	167.62	+	1.87	+	15.22
09 Meat	2.4303	213.99	212.52	185.23	+	0.69	+	15.53
10 Chicken	1.3596	202.55	202.52	151.75	+	0.01	+	33.48
11 Fish	0.2970	198.34	197.20	164.82	+	0.58	+	20.34
12 Milk Fresh	6.6800	204.07	201.84	180.53	+	1.10	+	13.04
13 Milk Products	0.6338	201.63	199.07	174.82	+	1.29	+	15.34
14 Milk Powder	0.1129	172.44	168.79	151.79	+	2.16	+	13.60
15 Eggs	0.4555	171.49	148.11	127.74	+	15.79	+	34.25
16 Mustard Oil	0.0952	159.53	158.20	142.22	+	0.84	+	12.17
17 Cooking Oil	1.7538	154.79	153.10	144.12	+	1.10	+	7.40
18 Vegetable Ghee	2.0714	163.69	162.81	155.40	+	0.54	+	5.33
19 Dry Fruits	0.2543	200.77	198.12	179.32	+	1.34	+	11.96
20 Fresh Fruits	1.6346	265.88	232.03	196.60	+	14.59	+	35.24
21 Pulse Masoor	0.2712	146.82	146.30	164.42	+	0.36	-	10.70
22 Pulse Moong	0.2336	238.26	238.74	266.94	-	0.20	-	10.74
23 Pulse Mash (Washed)	0.2098	204.12	204.38	225.60	-	0.13	-	9.52
24 Pulse Gram	0.2361	243.09	216.49	154.52	+	12.29	+	57.32
25 Gram Whole	0.1616	232.76	225.40	169.30	+	3.27	+	37.48
26 Beans	0.0269	198.78	194.88	169.65	+	2.00	+	17.17
27 Potatoes	0.4774	162.26	154.38	168.77	+	5.10	-	3.86
28 Onion	0.5415	135.14	146.61	101.85	-	7.82	+	32.69
29 Tomatoes	0.4494	81.94	187.81	69.45	-	56.37	+	17.98
30 Fresh Vegetables	1.6577	165.22	187.39	167.84	-	11.83	-	1.56
31 Sugar	1.0445	197.07	201.57	234.73	-	2.23	-	16.04
32 Gur	0.0220	216.41	219.16	249.90	-	1.25	-	13.40
33 Honey	0.0446	222.38	218.72	198.85	+	1.67	+	11.83
34 SweetMeat	0.2483	201.63	200.06	179.91	+	0.78	+	12.07
35 Beverages	1.1990	163.72	162.19	151.45	+	0.94	+	8.10
36 Jam, Tomato Ketchup & Pickles	0.2454	172.01	171.32	160.90	+	0.40	+	6.90
37 Condiments	0.2656	211.56	210.58	172.30	+	0.47	+	22.79
38 Spices	0.5441	272.62	272.99	234.61	-	0.14	+	16.20
39 Tea	0.8377	208.98	208.58	199.72	+	0.19	+	4.64
Alcoholic Beverages, Tobacco	1.4135	169.22	168.74	151.57	+	0.28	+	11.64
40 Cigarettes	1.3906	169.08	168.63	151.53	+	0.27	+	11.58
41 Betel Leaves & Nuts	0.0229	177.91	175.77	153.73	+	1.22	+	15.73
Clothing & Footwear	7.5708	163.22	161.68	140.69	+	0.95	+	16.01
42 Cotton Cloth	1.7286	152.16	150.89	138.06	+	0.84	+	10.21
43 Woolen Cloth	0.8759	183.68	182.30	151.74	+	0.76	+	21.05
44 Readymade Garments	0.9739	160.68	159.03	136.38	+	1.04	+	17.82
45 Woolen Readymade Garments	0.3964	161.01	160.53	141.20	+	0.30	+	14.03
46 Hosiery	0.5094	171.86	169.16	148.82	+	1.60	+	15.48
47 Dopatta	0.4412	173.73	170.66	143.08	+	1.80	+	21.42
48 Cleaning and Laundry	0.2110	177.51	174.86	151.03	+	1.52	+	17.53
49 Tailoring	0.8840	191.94	188.75	163.21	+	1.69	+	17.60
50 Footwear	1.5504	142.00	141.80	122.34	+	0.14	+	16.07

Annexure A: Consumer Price Index Numbers by Commodity Groups & Commodities (2007 - 2008 = 100)

Item and Specification	Weight	Index Numbers			% Change in			
		May 2012	Apr 2012	May 2011	Apr 2012	May 2011		
Housing, Water, Elec., Gas, Other	29.4149	153.27	149.07	138.27	+	2.82	+	10.85
51 House Rent	21.8149	135.02	135.02	126.67	+	0.00	+	6.59
52 Construction Input Items	0.5623	194.21	192.40	166.34	+	0.94	+	16.75
53 Construction Wage Rates	0.3331	163.21	160.84	143.81	+	1.47	+	13.49
54 Water Supply	0.4971	133.23	132.90	121.80	+	0.25	+	9.38
55 Electricity	4.3985	196.37	168.71	167.80	+	16.39	+	17.03
56 Gas	1.5756	264.42	264.42	204.32	+	0.00	+	29.41
57 Kerosene Oil	0.0057	267.60	266.00	234.96	+	0.60	+	13.89
58 Firewood Whole	0.2277	225.28	225.67	178.86	-	0.17	+	25.95
Furnished H.Hold Equip. & House	4.2082	171.52	168.78	141.13	+	1.62	+	21.53
59 Furniture	0.3315	161.27	159.39	138.72	+	1.18	+	16.26
60 Household Textiles	0.6489	167.77	165.26	140.33	+	1.52	+	19.55
61 Household Equipment	0.5936	153.84	152.27	142.16	+	1.03	+	8.22
62 Utensils	0.3212	166.02	162.84	138.29	+	1.95	+	20.05
63 Plastic Products	0.2547	171.46	169.80	151.86	+	0.98	+	12.91
64 Washing Soaps & Detergents	0.7893	187.61	185.11	156.59	+	1.35	+	19.81
65 Sewing Needle & Dr Cell	0.1496	145.24	144.16	129.80	+	0.75	+	11.90
66 Household Servant	1.0432	179.61	175.17	129.08	+	2.53	+	39.15
67 Marriage Hall Charges	0.0762	183.23	181.77	153.57	+	0.80	+	19.31
Health	2.1868	144.07	141.74	128.55	+	1.64	+	12.07
68 Drugs & Medicines	1.2667	128.29	126.54	119.78	+	1.38	+	7.10
69 Medical Equipments	0.0080	183.13	181.03	161.31	+	1.16	+	13.53
70 Doctor (MBBS) Clinic Fee	0.5904	175.66	171.60	146.10	+	2.37	+	20.23
71 Medical Tests	0.3217	147.23	145.82	130.09	+	0.97	+	13.18
Transport	7.2023	185.93	185.94	158.71	-	0.01	+	17.15
72 Motor Vehicles	0.6630	145.44	144.48	136.69	+	0.66	+	6.40
73 Motor Vehicle Accessories	0.2439	200.36	199.88	166.97	+	0.24	+	20.00
74 Motor Fuel	3.0269	193.20	194.29	155.39	-	0.56	+	24.33
75 Mechanical Service	0.4552	176.50	175.38	146.38	+	0.64	+	20.58
76 Motor Vehicle Tax	0.1099	152.02	152.02	102.68	+	0.00	+	48.05
77 Transport Services	2.7034	189.38	188.66	171.45	+	0.38	+	10.46
Communication	3.2198	122.38	122.36	123.74	+	0.02	-	1.10
78 Postal Services	0.0662	168.66	168.53	161.99	+	0.08	+	4.12
79 Communication & Apparatus	3.1536	121.41	121.39	122.94	+	0.02	-	1.24
Recreation & Culture	2.0227	163.95	146.51	137.72	+	11.90	+	19.05
80 Recreation & Culture	0.8634	121.05	120.03	115.16	+	0.85	+	5.11
81 Text Books	0.5706	229.88	171.48	161.09	+	34.06	+	42.70
82 Newspapers	0.1934	149.97	149.97	137.66	+	0.00	+	8.94
83 Stationery	0.3953	169.32	166.61	153.29	+	1.63	+	10.46
Education	3.9431	151.31	151.36	134.85	-	0.03	+	12.21
84 Education	3.9431	151.31	151.36	134.85	-	0.03	+	12.21
Restaurants & Hotels	1.2286	193.79	192.76	174.47	+	0.53	+	11.07
85 Readymade Food	1.2286	193.79	192.76	174.47	+	0.53	+	11.07
Miscellaneous Goods & Services	2.7550	188.15	188.70	163.19	-	0.29	+	15.30
86 Personal Care	1.4935	171.42	170.72	148.14	+	0.41	+	15.71
87 Cosmetics	0.3853	146.40	146.27	129.77	+	0.09	+	12.81
88 Blades	0.0322	169.53	166.64	147.18	+	1.73	+	15.19
89 Personal Equipments	0.8440	237.54	240.72	205.70	-	1.32	+	15.48

Annexure B: Wholesale Price Indices by Major Groups and Commodities

(2007 - 2008 = 100)

Item and Specification	Weight	Index Numbers			% Change in May 2012 Over			
		May 2012	Apr 2012	May 2011	Apr 2012	May 2012	May 2011	
General	100.0000	189.46	185.48	176.97	+	2.15	+	7.06
Agriculture Forestry &	25.7674	185.78	183.68	189.83	+	1.14	-	2.13
001 Wheat	0.6297	163.65	168.38	149.46	-	2.81	+	9.49
002 Maize	0.6764	168.27	163.16	175.90	+	3.13	-	4.34
003 Rice	2.4413	154.82	149.83	132.65	+	3.33	+	16.71
004 Sorghum/Jowar	0.0214	218.11	215.59	189.29	+	1.17	+	15.23
005 Millet/Bajra	0.0374	163.10	157.66	149.84	+	3.45	+	8.85
006 Vegetables	1.2441	172.46	212.58	156.56	-	18.87	+	10.16
007 Fresh Fruits	1.5144	272.26	212.67	179.39	+	28.02	+	51.77
008 Dry Fruits	0.2478	172.32	174.24	178.21	-	1.10	-	3.31
009 Cotton Seeds	1.1511	173.84	174.03	193.07	-	0.11	-	9.96
010 Other Oil Seeds	0.0722	171.79	167.61	154.75	+	2.49	+	11.01
011 Edible Roots/Potatoes	0.2540	150.79	134.95	190.67	+	11.74	-	20.92
012 Stimulant and Spice Crops	0.1634	165.35	170.44	210.22	-	2.99	-	21.34
013 Pulses	0.4901	228.41	225.64	194.49	+	1.23	+	17.44
014 Sugar Crops	1.0725	267.92	272.71	201.25	-	1.76	+	33.13
015 Fibre Crops	5.3169	170.95	173.25	291.20	-	1.33	-	41.29
016 Unmanufactured Tobacco	0.0742	166.81	166.99	165.41	-	0.11	+	0.85
017 Poultry	0.5633	177.51	206.42	158.96	-	14.01	+	11.67
018 Raw Milk from Bovine Animals	7.0279	197.20	194.99	171.97	+	1.13	+	14.67
019 Eggs	0.5034	166.54	139.52	125.30	+	19.37	+	32.91
020 Raw Animal Materials/Wool	0.0351	136.50	136.50	127.01	+	0.00	+	7.47
021 Hides and Fur Skins, Raw	0.4834	138.05	138.42	115.18	-	0.27	+	19.86
022 Fuel Wood in Logs	0.0179	203.06	201.97	176.18	+	0.54	+	15.26
023 Fish Live Fresh or Chilled	1.7295	155.33	154.52	128.25	+	0.52	+	21.12
Ores/Minerals, Elec., Gas &	12.0389	214.79	188.10	162.41	+	14.19	+	32.25
024 Coal not Agglomerated	0.7508	188.24	180.39	125.49	+	4.35	+	50.00
025 Natural Gas Liquified	5.7385	207.95	210.36	159.56	-	1.15	+	30.33
026 Salt and Pure Sodium Chloride	0.0584	165.87	164.89	136.81	+	0.59	+	21.24
027 Electrical Energy	5.4912	226.10	166.13	170.70	+	36.10	+	32.45
Food, Beverages, Tobacco, Te	31.1122	179.06	177.32	177.44	+	0.98	+	0.91
Food Products, Beverages	20.0718	181.46	180.69	171.15	+	0.43	+	6.02
028 Meat of Animals	3.4559	224.02	223.72	188.66	+	0.13	+	18.74
029 Vegetables and Fruit Juice	0.0058	178.36	177.93	163.07	+	0.24	+	9.38
030 Dried Fruits and Nuts	0.1733	198.46	196.91	189.01	+	0.79	+	5.00
031 Fruit Juices	0.3880	158.18	157.86	147.90	+	0.20	+	6.95
032 Vegetable Oils Refined	1.9242	156.41	154.59	149.08	+	1.18	+	4.92
033 Vegetable Ghee	1.5632	145.16	143.93	139.13	+	0.85	+	4.33
034 Oil Cakes	0.9611	139.41	135.09	162.72	+	3.20	-	14.33
035 Processed Liquid Milk	4.4437	191.19	187.39	169.01	+	2.03	+	13.12
036 Milk and Cream in Solid Form	0.0316	167.14	166.51	189.48	+	0.38	-	11.79
037 Ice Cream	0.0047	161.68	161.68	148.72	+	0.00	+	8.71
038 Dairy Products N.E.C	0.0117	198.75	197.89	158.61	+	0.43	+	25.31
039 Wheat Flour	2.3034	153.57	154.79	137.90	-	0.79	+	11.36
040 Other Cereal Flour	0.0604	214.25	191.42	136.55	+	11.93	+	56.90
041 Sugar Refined	1.7975	200.47	207.78	245.79	-	3.52	-	18.44
042 Chocolate	0.0139	100.26	100.26	99.45	+	0.00	+	0.81
043 Sugar Confectionary	0.0738	100.40	100.40	100.00	+	0.00	+	0.40
044 Coffee and Tea	0.7303	196.69	195.35	187.89	+	0.69	+	4.68
045 Spices	0.1449	303.53	303.48	203.89	+	0.02	+	48.87
046 Other Food Products	0.0336	318.54	318.94	292.41	-	0.13	+	8.94
047 Mineral Water	0.0207	165.88	165.82	146.29	+	0.04	+	13.39
048 Beverages	0.6303	135.21	135.24	133.62	-	0.02	+	1.19
049 Tobacco Products	1.2998	175.85	174.93	178.22	+	0.53	-	1.33
Textiles & Apparels	10.3289	178.57	174.83	194.31	+	2.14	-	8.10
050 Cotton Yarn	5.2491	200.04	193.36	244.76	+	3.45	-	18.27
051 Nylon Yarn	0.1719	183.81	195.64	201.74	-	6.05	-	8.89
052 Blended Yarn	0.1689	187.07	183.85	224.89	+	1.75	-	16.82
053 Woven Fabrics	0.0128	171.55	171.55	144.44	+	0.00	+	18.77
054 Cotton Fabrics	0.6343	175.89	175.67	155.96	+	0.13	+	12.78
055 Other Fabrics	1.1016	165.23	161.72	136.36	+	2.17	+	21.17
056 Silk and Reyon Fabrics	0.7350	141.30	141.18	134.18	+	0.08	+	5.31
057 Towels	0.1235	189.19	189.19	164.17	+	0.00	+	15.24

Annexure B: Wholesale Price Indices by Major Groups and Commodities

(2007 - 2008 = 100)

Item and Specification	Weight	Index Numbers			% Change in May 2012 Over			
		May 2012	Apr 2012	May 2011	Apr 2012	May 2012	May 2011	
058 Blankets	0.0029	161.28	161.28	137.48	+	0.00	+	17.31
059 Bed Sheets	0.0913	175.92	174.13	146.24	+	1.03	+	20.30
060 Quilts	0.0019	147.05	147.05	136.63	+	0.00	+	7.63
061 Woolen Carpets	0.0383	104.76	103.57	108.33	+	1.15	-	3.30
062 Synthetic Carpets	0.0566	144.07	144.07	150.85	+	0.00	-	4.49
063 Hosiery Products	0.8832	163.84	163.35	144.89	+	0.30	+	13.08
064 Readymade Garments	1.0576	127.25	126.92	118.29	+	0.26	+	7.57
Leather Products	0.7115	118.56	118.56	109.67	+	0.00	+	8.11
065 Leather without Hair	0.2973	109.83	109.83	107.45	+	0.00	+	2.21
066 Other Leather N.E.C	0.2567	122.57	122.57	117.25	+	0.00	+	4.54
067 Footwears	0.1575	128.50	128.50	101.48	+	0.00	+	26.63
Other Transportable Goods	22.3659	207.39	208.92	182.34	-	0.73	+	13.74
068 Timber	0.0165	144.35	144.14	134.66	+	0.15	+	7.20
069 Printing Paper	0.4279	141.99	133.29	105.15	+	6.53	+	35.04
070 Hard Board	0.1579	168.75	158.33	125.00	+	6.58	+	35.00
071 Coke	0.2797	163.45	163.45	155.28	+	0.00	+	5.26
072 Motor Spirit	1.5336	174.61	174.61	149.32	+	0.00	+	16.94
073 Diesel Oil	5.2664	263.04	265.00	238.75	-	0.74	+	10.17
074 Kerosine Oil	0.2151	266.52	266.52	239.15	+	0.00	+	11.44
075 Furnace Oil	3.2664	210.94	220.75	184.35	-	4.44	+	14.42
076 Mobil Oil	0.7114	181.11	178.98	165.22	+	1.19	+	9.62
077 Chemicals	1.7720	145.79	145.98	135.03	-	0.13	+	7.97
078 Dyeing Material	0.1539	104.26	104.26	107.04	+	0.00	-	2.60
079 Fertilizers	2.8657	268.05	270.34	217.45	-	0.85	+	23.27
080 Pesticides	0.2763	165.53	165.53	155.00	+	0.00	+	6.79
081 Insecticides	0.1276	121.64	125.52	128.84	-	3.09	-	5.59
082 Paints and Varnishes	0.1916	211.83	202.50	166.88	+	4.61	+	26.94
083 Medicines	1.1428	122.49	120.38	115.56	+	1.75	+	6.00
084 Soaps and Detergents	0.8168	156.58	155.89	143.17	+	0.44	+	9.37
085 Auto Tyres	0.2703	175.62	175.62	159.51	+	0.00	+	10.10
086 Plastic Products	0.4550	185.12	186.58	159.15	-	0.78	+	16.32
087 Glass sheets	0.2089	172.43	172.43	152.76	+	0.00	+	12.88
088 Other Glass Articles	0.1635	222.06	216.51	197.18	+	2.56	+	12.62
089 Ceramics and Sanitary Fixture	0.0244	144.28	144.10	130.37	+	0.12	+	10.67
090 Bricks, Blocks and Tiles	0.1566	170.86	171.12	146.98	-	0.15	+	16.25
091 Cement	1.8145	177.41	175.39	154.07	+	1.15	+	15.15
092 Bed Foam	0.0006	131.00	131.00	121.17	+	0.00	+	8.11
093 Matches	0.0505	122.82	120.63	111.77	+	1.82	+	9.89
Metal Product, Machinery &	8.7156	156.46	156.18	143.65	+	0.18	+	8.92
094 Pig Iron	0.0593	128.97	128.97	128.97	+	0.00	+	0.00
095 Steel Bar and Sheets	1.4022	136.32	135.01	126.10	+	0.97	+	8.10
096 Pipe Fittings	0.0780	142.31	142.31	135.28	+	0.00	+	5.20
097 Steel Products	0.3879	159.13	158.78	135.22	+	0.22	+	17.68
098 Engines and Motors	0.0046	109.07	109.07	109.07	+	0.00	+	0.00
099 Vacuum Pumps	0.0155	115.39	115.39	115.39	+	0.00	+	0.00
100 Air Conditioners	0.0049	170.33	168.43	160.61	+	1.13	+	6.05
101 Cultivators	0.0551	184.66	184.66	180.09	+	0.00	+	2.54
102 Chuff Cutter	0.1293	134.28	131.08	131.08	+	2.44	+	2.44
103 Tractors	0.0028	172.36	172.36	180.89	+	0.00	-	4.72
104 Lathe Machines	0.0525	147.68	147.68	147.51	+	0.00	+	0.12
105 Concrete Mixture	0.0107	138.83	138.83	138.83	+	0.00	+	0.00
106 Fridge,WashM,SewM,Fans,Iro	1.1645	164.93	164.86	155.20	+	0.04	+	6.27
107 Electric Wires	0.0912	165.49	165.49	152.53	+	0.00	+	8.50
108 Lighting Equipments	1.4431	145.49	145.49	129.62	+	0.00	+	12.24
109 Radio and Television	0.1843	132.73	132.73	129.93	+	0.00	+	2.16
110 Motor Vehicles	0.0244	160.28	160.28	151.29	+	0.00	+	5.94
111 Motorcycles	0.2570	124.02	124.02	118.67	+	0.00	+	4.51
112 Bicycles	3.3483	171.52	171.52	156.80		0.00	+	9.39