



Monthly Review on Price Indices



November, 2012
(Base 2007-08)

**Government of Pakistan
Statistics Division
Pakistan Bureau of Statistics
Islamabad**

Inflation in Brief

1. CPI inflation, General, increased by 6.9% on year-on-year basis in November 2012 as compared to 7.7% in the previous month and 10.2% in November 2011. On month-on-month basis, it decreased by 0.4% in November 2012 as compared an increase of 0.4% in the previous month and 0.3% in November 2011.
2. Core inflation measured by non-food non-energy CPI (Core NFNE) increased by 9.7% in November 2012 as compared to 10.1% in October 2012 (YoY) and by 10.4% in November 2011. Core NFNE inflation on MoM basis increased by 0.2% in November 2012 as compared to 1.2% a month earlier and 0.6% in November 2011.
3. Core inflation, measured by 20% weighted trimmed mean CPI (Core Trimmed) increased by 8.8% in November 2012 and by 9.7% in October 2012 (YoY) which increased by 11.5% in November 2011. Core Trimmed inflation has increased by 0.2% on MoM basis in November 2012 as compared to 0.7% in October 2012 which increased by 0.5% in November 2011.
4. SPI inflation on YoY basis increased by 6.0% in November 2012 compared with 6.7% a month earlier and 3.8% in November 2011. On MoM basis, it increased by 0.03% in November 2012 as compared to a decrease of 0.4% a month earlier and increased by 0.7% in November 2011.
5. WPI inflation on YoY basis increased to 7.7% in November 2012 compared with 7.5% a month earlier and 12.0% in November 2011. WPI inflation on MoM basis decreased by 0.4% in November 2012 as compared to an increase of 0.1% a month earlier and decreased by 0.5% in November 2011.
6. Figures 1 and 2 show graphically the data of Table 1. Table 1.1 shows "Period Average" and "YoY" percent changes in indices of three years.

Table 1: Inflation (%) (Base 2007-08)

Period	CPI						Core Inflation				SPI**		WPI	
	General		Food		Non-food		NFNE*		Trimmed		YoY	MoM	YoY	MoM
	YoY	MoM	YoY	MoM	YoY	MoM	YoY	MoM	YoY	MoM				
Oct 11	11.0	1.4	11.7	1.6	10.4	1.3	10.4	1.4	11.7	1.0	6.5	0.8	15.4	0.4
Nov 11	10.2	0.3	10.0	0.1	10.3	0.4	10.4	0.6	11.5	0.5	3.8	0.7	12.0	-0.5
Dec 11	9.7	-0.7	9.5	-2.2	9.9	0.4	10.1	0.4	10.5	0.3	3.0	-2.0	8.3	-1.3
Jan 12	10.1	1.5	9.2	1.5	10.7	1.6	10.2	1.1	10.4	0.8	3.9	1.0	8.7	2.3
Feb 12	11.0	0.3	10.5	-0.7	11.5	1.0	10.6	0.7	10.7	0.5	5.2	-0.1	7.2	0.6
Mar 12	10.8	1.2	9.8	1.5	11.5	0.9	10.8	1.0	10.5	0.8	6.1	1.5	4.5	0.7
Apr 12	11.3	1.8	10.7	2.2	11.6	1.6	10.8	1.4	11.0	1.3	7.5	1.7	3.8	1.8
May 12	12.3	1.1	11.3	0.2	13.1	1.9	11.1	0.8	11.7	0.5	8.1	-0.1	7.1	2.1
Jun 12	11.3	0.0	10.3	-0.2	12.0	0.2	11.4	0.7	11.1	0.5	9.7	1.4	6.4	0.0
Jul 12	9.6	-0.2	9.1	1.8	10.0	-1.7	11.3	1.0	10.7	0.7	7.7	0.5	7.2	0.4
Aug 12	9.1	0.9	8.5	0.9	9.4	0.9	10.8	0.3	10.6	0.4	8.2	1.3	7.7	1.0
Sep 12	8.8	0.8	7.6	0.7	9.7	0.9	10.4	0.4	10.4	0.5	8.0	1.2	7.8	0.3
Oct 12	7.7	0.4	5.8	-0.1	9.1	0.7	10.1	1.2	9.7	0.7	6.7	-0.4	7.5	0.1
Nov 12	6.9	-0.4	5.3	-0.3	8.1	-0.4	9.7	0.2	8.8	0.2	6.0	0.0 ¹	7.7	-0.4

*NFNE is non-food non-energy,

** SPI for quintile 1 ,

1 Actual figure is 0.03, displayed in rounded figure

Table 1.1 : Period Average and YoY % Changes of Indices (Base 2007-08)

Index	Averages July-November % Changes			November over November % Changes		
	2012-13	2011-12	2010-11	2012-13	2011-12	2010-11
CPI	8.39	11.10	14.09	6.93	10.19	14.96
SPI	7.31	8.36	18.03	6.00	3.77	22.45
WPI	7.61	16.58	18.84	7.73	11.96	20.34

Figure 1: CPI Inflation YoY, Special Indices

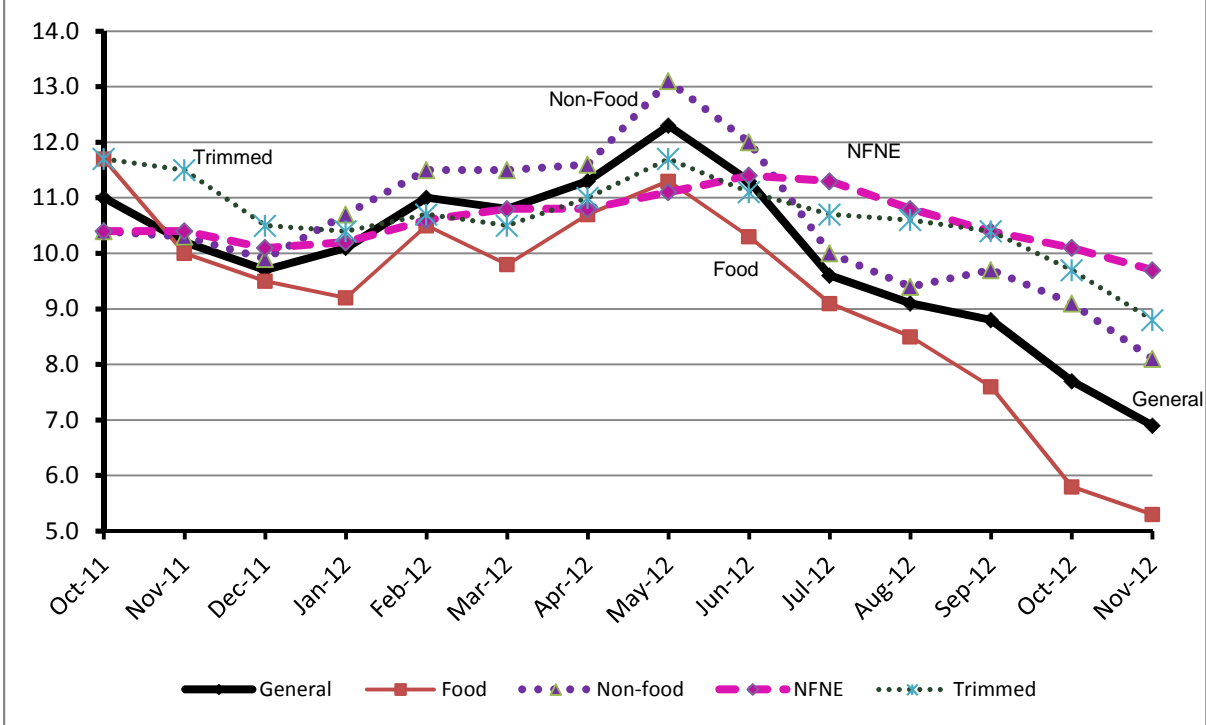
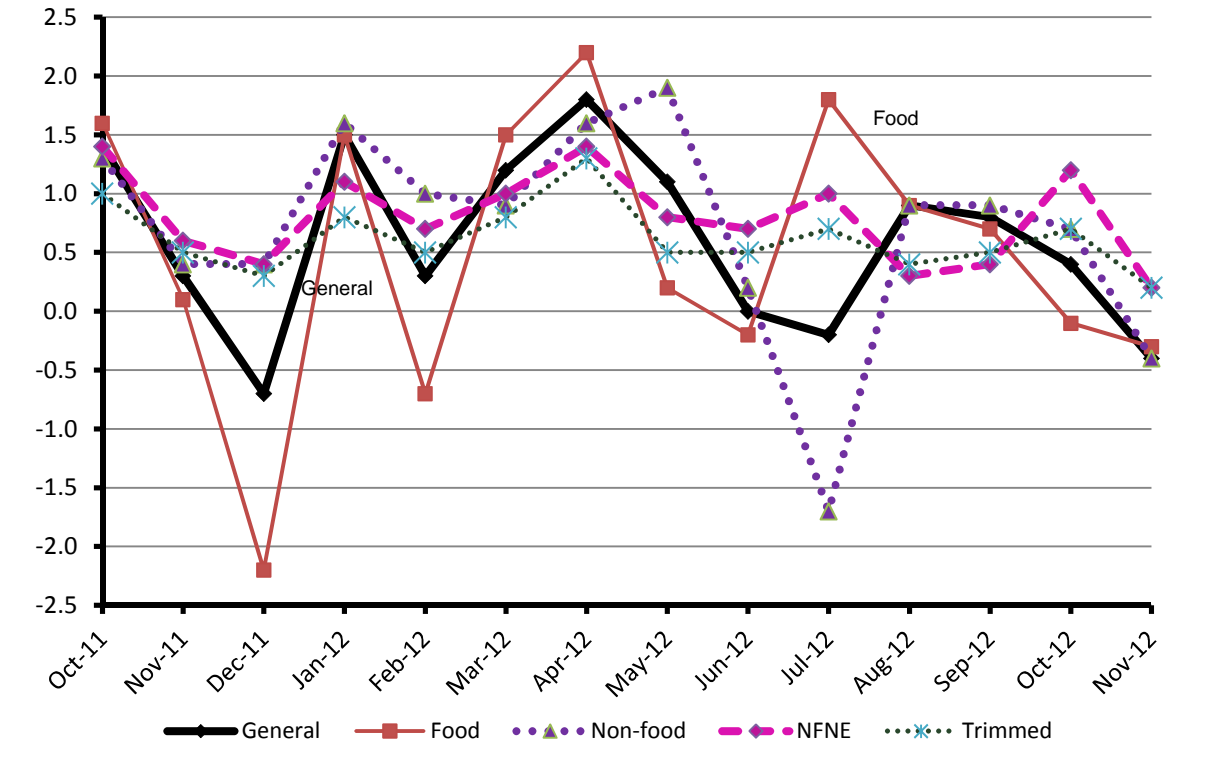


Figure 2: CPI Inflation MoM, Special Indices



I. Consumer Price Index (CPI)

The Consumer Price Index of November, 2012 has decreased by 0.39% over October, 2012 and increased by 6.93% over corresponding month of last year.

Table 2 : Consumer Price Index by Group of Commodities and Services (Base 2007-08)									
No	Group	Group Weight (%)	Indices			% Change Nov 2012 over		Impact (Adjusted) (In % points) Nov 2012 over	
			Nov 2012	Oct 2012	Nov 2011	Oct 2012	Nov 2011	Oct 2012	Nov 2011
	General	100.00	172.42	173.10	161.25	-0.39	6.93	-0.39	6.93
1.	Food & Non-alcoholic Bev.	34.83	192.84	193.56	184.17	-0.37	4.71	-0.14	1.73
	<i>Non-perishable Food Items</i>	29.84	193.52	191.92	179.58	0.83	7.76	0.31	2.25
	<i>Perishable Food Items</i>	4.99	188.77	203.37	211.62	-7.18	-10.80	-0.44	-0.52
2.	Alcoholic Bev. & Tobacco	1.41	190.69	190.43	161.67	0.14	17.95	0.00	0.25
3.	Clothing & Footwear	7.57	172.18	170.38	150.36	1.06	14.51	0.10	1.07
4.	Housing, Water, Electricity, Gas & Fuels	29.41	150.01	149.95	144.03	0.04	4.15	0.01	1.19
5.	Furnishing & Household Equipment Maintenance	4.21	178.63	176.84	157.52	1.01	13.40	0.05	0.55
6.	Health	2.19	156.08	155.13	135.85	0.61	14.89	0.02	0.32
7.	Transport	7.20	180.75	191.22	165.16	-5.48	9.44	-0.49	0.66
8.	Communication	3.22	123.75	123.68	123.19	0.06	0.45	0.00	0.01
9.	Recreation & Culture	2.03	166.19	165.94	140.74	0.15	18.08	0.00	0.36
10.	Education	3.94	154.78	154.47	140.91	0.20	9.84	0.01	0.38
11.	Restaurants & Hotels	1.23	201.11	200.30	182.32	0.40	10.31	0.01	0.12
12.	Miscellaneous	2.76	200.34	198.94	179.71	0.70	11.48	0.02	0.31

Main contributors to month-on-month and year-on-year percentage changes are given below and detail is given in Annexure A.

1. **Month-on-month** Top few commodities which varied from previous month i.e. October 2012 are given below:-

Food Items Increased: Chicken (7.69%), Tea (6.71%), Eggs (6.49%), Betal leaves & Nuts (2.67%), Honey (2.57%), Jam, Tomatoe Ketchup & Pickles (2.35%), Wheat (2.12%), Dry Fruits (1.79%), Fish (1.35%), Beans (1.21%), Wheat Flour (1.11%) and Milk Fresh (1.06%).

Decreased: Tomatoes (16.24%), Onions (14.76%), Fresh Vegetables (7.52%), Potatoes (3.79%), Fresh Fruits (3.35%), Pulse Moong & Pulse Gram (2.04% each), Spices (1.77%), Cooking oil (1.69%), Vegetable Ghee (1.46%) and Mustard oil (0.41%).

Non-food Items Increased: Woolen readymade Garments (5.05%), Firewood whole (2.25%), Washing soaps & Detergents (1.54%), Household Servant (1.49%), Cleaning & Laundry (1.43%), Tailoring (1.38%), Dopatta (1.32%) and Hosiery (1.12%).

Decreased: Motor Fuel (10.65%) and Transport Services (2.68%).

2. **Year-on-year:** Top few commodities which varied from previous year i.e. November 2011 are given below:-

Food Items Increased: Pulse Gram (44.30%), Besan (42.57%), Eggs (24.70%), Honey (23.60%), Beans (20.81%), Cigarettes (18.14%), Milk Powder (15.89%), Gram Whole (13.55%), Rice (12.87%), Milk Fresh (11.81%), Cooking Oil (11.76%), and Nimco (10.96%).

Decreased: Tomatoes (41.86%), Onions (36.74%), Sugar (18.65%), Gur (14.21%), Pulse Moong (13.07%), Pulse Mash (9.20%), Pulse Masoor (6.34%), Fresh Vegetables (3.81%), Chicken (0.37%) and Fresh Fruits (0.30%).

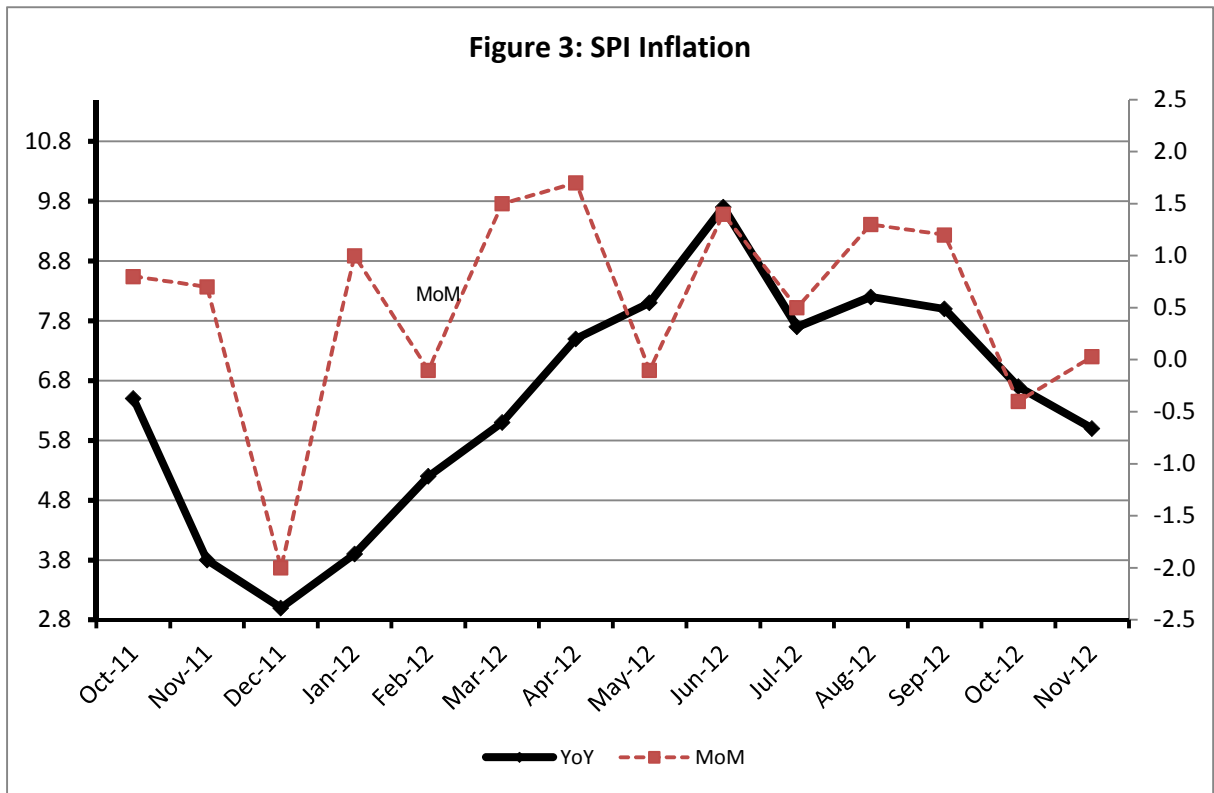
Non-food Items Increased: Text Books (39.99%), Motor Vehicle Tax (27.23%), Woolen Readymade Garments (24.26%), Doctor (MBBS) Clinic Fee (22.28%), Kerosene Oil (20.59%), Firewood whole (20.06%), Utensils (19.72%), Dopatta (19.38%) and Cleaning & Laundry (18.30%).

Decreased: Gas (42.09%).

III. Sensitive Price Indicator

Quintile-wise percentage changes YoY and MoM are given below in Table 3. The series from October 2011 to November 2012 is also graphed below in Figure 3.

Table 3 : Sensitive Price Indicator (Base 2007-08)					
Quintiles	Indices			% Change Nov 2012 over	
	Nov 2012	Oct 2012	Nov 2011	Oct 2012	Nov 2011
1	181.82	181.77	171.53	0.03	6.00
2	188.00	187.94	173.93	0.03	8.09
3	186.79	186.74	173.42	0.03	7.71
4	188.03	187.98	179.94	0.03	4.50
5	188.57	188.58	183.30	-0.01	2.88
Combined	187.35	187.32	177.53	0.02	5.53



IV. Wholesale Price Index

The Wholesale Price Index for November 2012 decreased by 0.36% over October 2012. It increased by 7.73% over the corresponding month of the last year. YoY and MoM movements, from October 2011 to November 2012 are also graphed below in Figure 4.

Table 4 : Wholesale Price Index by Group of Commodities (Base 2007-08)

No.	Group	Group Weight (%)	Indices			% Change November 2012 over		Impact (Adjusted) (in %age points) Nov 2012 over	
			Nov 2012	Oct 2012	Nov 2011	Oct 2012	Nov 2011	Oct 2012	Nov 2011
	General	100.00	192.18	192.88	178.39	-0.36	7.73	-0.36	7.73
1.	Agriculture, Forestry & Fishery Products	25.77	189.19	194.13	184.98	-2.54	2.27	-0.77	0.93
2.	Ores & Minerals, Electricity, Gas & Water	12.04	208.05	207.79	170.09	0.13	22.32	0.02	2.49
3.	Food Products, Beverages & Tobacco, Textiles, Apparel & Leather Products	31.11	187.56	185.83	175.63	0.93	6.79	0.36	2.02
	i. Food Products, Bev. & Tobacco	20.07	191.26	190.73	180.05	0.28	6.23	0.07	1.23
	ii. Textiles and Apparel	10.33	185.12	180.94	171.44	2.31	7.98	0.29	0.75
	iii. Leather Products	0.71	118.56	118.56	111.75	0.00	6.09	0.00	0.04
4.	Other Transportable Goods except Metal Products, Machinery & Equipments	22.37	206.43	206.53	189.50	-0.05	8.93	0.00	1.94
5.	Metal Products, Machinery & Equipments	8.72	159.04	158.67	151.66	0.23	4.87	0.03	0.36

Main contributors to month-on-month and year-on-year percentage changes are given below and detail is given in Annexure B.

1. **Month-on-month** Top few commodities which varied from previous month i.e. October 2012 are given below:-

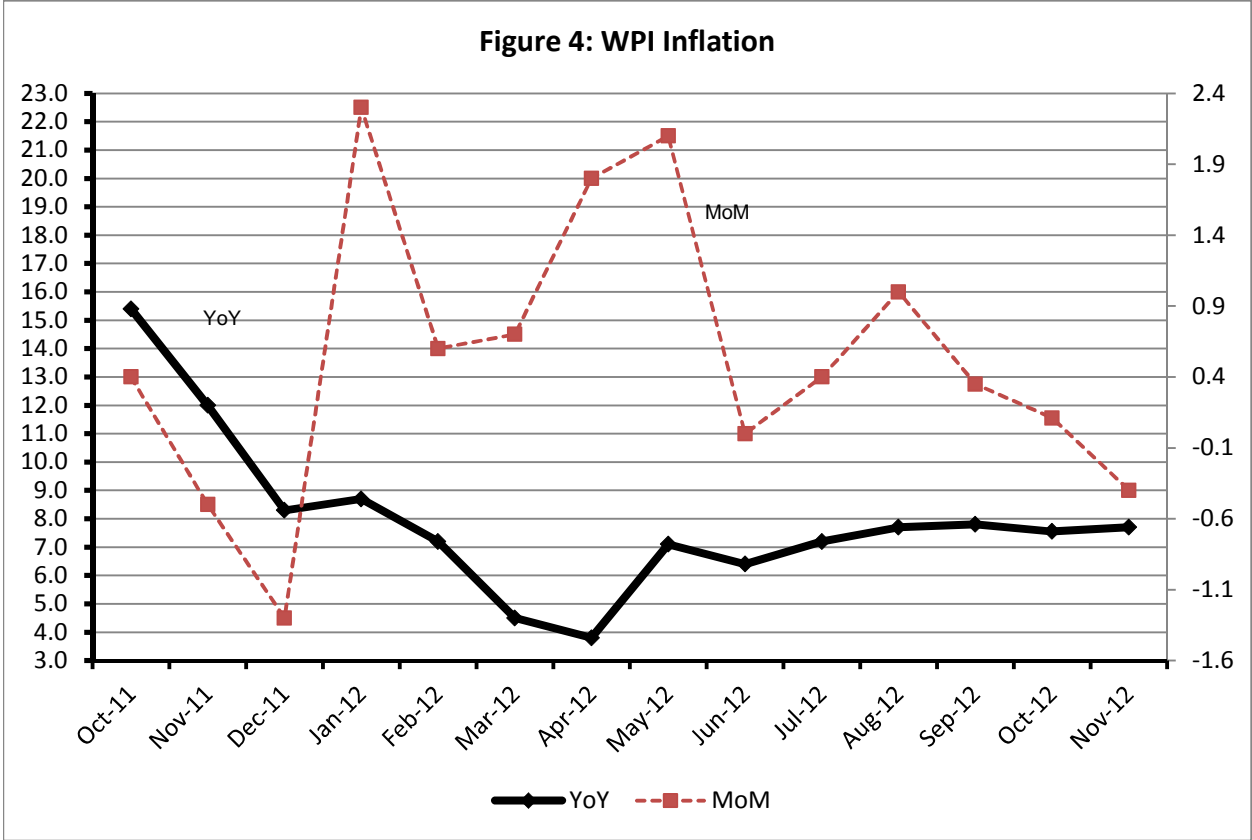
Increased: Insecticides (11.89%), Eggs (7.47%), Poultry (7.29%), Matches (5.37%), Dry fruits and nuts (4.41%), Cotton Yarn (3.70%), Blankets (3.44%), Printing Paper (3.36%), Coffee and Tea (3.30%) and Chemicals (3.05%).

Decreased: Fresh Fruits (29.09%), Bajra (19.37%), Vegetables (17.01%), Stimulants and Spices Crops (12.54%), Potatoes (4.09%), Furnace Oil (3.63%), Maize (3.35%), Other Cereal Flour (2.03%), Steel Bars and Sheets (1.65%) and Kerosene Oil (1.42%).

2. **Year-on-year** Top ten commodities which varied from previous year i.e. November, 2011 are given below:-

Increased:Footwear (69.11%),Wheat Flour (56.25%),Bricks, Blocks & Tiles (40.77%), Dairy Products (36.10%), Engines and Motors (31.68%), Other Leathers (29.19%), Readymade Garments (26.63%), Quilts (25.95%), Towels (25.70%) and Other Food Products (23.48%).

Decreased:Woven Fabrics (24.73%), Cotton Yarn (20.80%), Timber (17.18%), Fertilizers (13.39%), Coffee and Tea (12.88%), Pesticides (12.25%), Cultivators (10.76%), Kerosene Oil (10.46%), Coal not agglomerated (9.96%) and Wheat (8.66%).



Annexure A: Consumer Price Index Numbers by Commodity Groups & Commodities (2007 - 2008 = 100)

Item and Specification	Weight	Index Numbers			% Change in Nov 2012 Over		
		Nov 2012	Oct 2012	Nov 2011	Oct 2012	Nov 2011	
General	100.000	172.42	173.10	161.25	-	0.39	+ 6.93
Food & Non-alcoholic Beverages	34.8343	192.84	193.56	184.17	-	0.37	+ 4.71
01 Wheat	0.3477	173.21	169.62	156.86	+	2.12	+ 10.42
02 Wheat Flour	4.1648	180.13	178.16	164.29	+	1.11	+ 9.64
03 Wheat Product	0.0959	173.21	171.84	161.67	+	0.80	+ 7.14
04 Besan	0.1500	235.75	236.28	165.36	-	0.22	+ 42.57
05 Rice	1.5821	171.92	171.96	152.32	-	0.02	+ 12.87
06 Cereals	0.1563	203.04	201.55	187.46	+	0.74	+ 8.31
07 Bakery & Confectionary	1.1550	173.99	173.13	161.20	+	0.50	+ 7.93
08 Nimco	0.4574	197.49	196.94	177.99	+	0.28	+ 10.96
09 Meat	2.4303	218.77	218.61	204.34	+	0.07	+ 7.06
10 Chicken	1.3596	155.34	144.25	155.91	+	7.69	- 0.37
11 Fish	0.2970	193.18	190.61	175.02	+	1.35	+ 10.38
12 Milk Fresh	6.6800	217.36	215.09	194.40	+	1.06	+ 11.81
13 Milk Products	0.6338	209.90	208.96	190.31	+	0.45	+ 10.29
14 Milk Powder	0.1129	184.27	182.84	159.01	+	0.78	+ 15.89
15 Eggs	0.4555	229.32	215.35	183.90	+	6.49	+ 24.70
16 Mustard Oil	0.0952	160.75	161.41	152.21	-	0.41	+ 5.61
17 Cooking Oil	1.7538	162.59	165.39	145.48	-	1.69	+ 11.76
18 Vegetable Ghee	2.0714	160.51	162.88	155.12	-	1.46	+ 3.47
19 Dry Fruits	0.2543	204.95	201.35	193.54	+	1.79	+ 5.90
20 Fresh Fruits	1.8649	182.54	188.87	183.09	-	3.35	- 0.30
21 Pulse Masoor	0.2712	142.64	143.13	152.29	-	0.34	- 6.34
22 Pulse Moong	0.2336	215.42	219.90	247.82	-	2.04	- 13.07
23 Pulse Mash (Washed)	0.2098	192.99	193.39	212.55	-	0.21	- 9.20
24 Pulse Gram	0.2361	233.27	238.12	161.66	-	2.04	+ 44.30
25 Gram Whole	0.1616	227.39	227.51	200.26	-	0.05	+ 13.55
26 Beans	0.0269	214.27	211.70	177.36	+	1.21	+ 20.81
27 Potatoes	0.4416	196.64	204.38	193.36	-	3.79	+ 1.70
28 Onion	0.5057	209.68	245.99	331.44	-	14.76	- 36.74
29 Tomatoes	0.4136	130.48	155.77	224.42	-	16.24	- 41.86
30 Fresh Vegetables	1.7651	201.04	217.38	209.00	-	7.52	- 3.81
31 Sugar	1.0445	195.25	195.57	240.01	-	0.16	- 18.65
32 Gur	0.0220	226.61	224.78	264.16	+	0.81	- 14.21
33 Honey	0.0446	252.31	246.00	204.13	+	2.57	+ 23.60
34 SweetMeat	0.2483	205.11	204.05	191.34	+	0.52	+ 7.20
35 Beverages	1.1990	168.53	168.93	160.53	-	0.24	+ 4.98
36 Jam, Tomato Ketchup & Pickles	0.2454	178.86	174.76	169.65	+	2.35	+ 5.43
37 Condiments	0.2656	212.58	212.16	191.83	+	0.20	+ 10.82
38 Spices	0.5441	257.64	262.27	248.34	-	1.77	+ 3.74
39 Tea	0.8377	216.87	203.23	200.77	+	6.71	+ 8.02
Alcoholic Beverages, Tobacco	1.4135	190.69	190.43	161.67	+	0.14	+ 17.95
40 Cigarettes	1.3906	190.81	190.62	161.51	+	0.10	+ 18.14
41 Betel Leaves & Nuts	0.0229	183.14	178.37	170.94	+	2.67	+ 7.14
Clothing & Footwear	7.5708	172.18	170.38	150.36	+	1.06	+ 14.51
42 Cotton Cloth	1.7286	159.62	158.22	148.82	+	0.88	+ 7.26
43 Woolen Cloth	0.8759	192.14	190.45	168.02	+	0.89	+ 14.36
44 Readymade Garments	0.9739	172.85	172.07	148.22	+	0.45	+ 16.62
45 Woolen Readymade Garments	0.3964	177.50	168.96	142.85	+	5.05	+ 24.26
46 Hosiery	0.5094	183.58	181.55	160.52	+	1.12	+ 14.37
47 Dopatta	0.4412	188.47	186.02	157.87	+	1.32	+ 19.38
48 Cleaning and Laundry	0.2110	192.87	190.15	163.04	+	1.43	+ 18.30
49 Tailoring	0.8840	205.03	202.23	176.63	+	1.38	+ 16.08
50 Footwear	1.5504	143.18	142.91	123.20	+	0.19	+ 16.22

Annexure A: Consumer Price Index Numbers by Commodity Groups & Commodities (2007 - 2008 = 100)

Item and Specification	Weight	Index Numbers			% Change in			
		Nov 2012	Oct 2012	Nov 2011	Oct 2012	Nov 2011		
Housing, Water, Elec., Gas, Other	29.4149	150.01	149.95	144.03	+	0.04	+	4.15
51 House Rent	21.8149	139.61	139.61	131.37	+	0.00	+	6.27
52 Construction Input Items	0.5623	202.11	201.21	184.15	+	0.45	+	9.75
53 Construction Wage Rates	0.3331	171.19	170.75	151.37	+	0.26	+	13.09
54 Water Supply	0.4971	133.23	133.23	128.32	+	0.00	+	3.83
55 Electricity	4.3985	196.37	196.37	168.71	+	0.00	+	16.39
56 Gas	1.5756	134.34	134.34	232.00	+	0.00	-	42.09
57 Kerosene Oil	0.0057	275.18	274.09	228.19	+	0.40	+	20.59
58 Firewood Whole	0.2277	233.33	228.19	194.34	+	2.25	+	20.06
Furnished H.Hold Equip.& House	4.2082	178.63	176.84	157.52	+	1.01	+	13.40
59 Furniture	0.3315	168.01	167.17	149.28	+	0.50	+	12.55
60 Household Textiles	0.6489	175.00	173.23	153.13	+	1.02	+	14.28
61 Household Equipment	0.5936	157.13	156.81	148.25	+	0.20	+	5.99
62 Utensils	0.3212	176.06	174.91	147.06	+	0.66	+	19.72
63 Plastic Products	0.2547	175.06	174.34	163.36	+	0.41	+	7.16
64 Washing Soaps & Detergents	0.7893	194.15	191.20	173.59	+	1.54	+	11.84
65 Sewing Needle & Dr Cell	0.1496	151.54	150.69	136.49	+	0.56	+	11.03
66 Household Servant	1.0432	189.23	186.45	160.08	+	1.49	+	18.21
67 Marriage Hall Charges	0.0762	193.11	193.11	167.43	+	0.00	+	15.34
Health	2.1868	156.08	155.13	135.85	+	0.61	+	14.89
68 Drugs & Medicines	1.2667	138.28	137.39	124.16	+	0.65	+	11.37
69 Medical Equipments	0.0080	196.91	195.91	171.14	+	0.51	+	15.06
70 Doctor (MBBS) Clinic Fee	0.5904	193.76	192.89	158.46	+	0.45	+	22.28
71 Medical Tests	0.3217	156.00	154.65	139.52	+	0.87	+	11.81
Transport	7.2023	180.75	191.22	165.16	-	5.48	+	9.44
72 Motor Vehicles	0.6630	152.84	152.25	140.39	+	0.39	+	8.87
73 Motor Vehicle Accessories	0.2439	206.89	205.45	185.04	+	0.70	+	11.81
74 Motor Fuel	3.0269	172.69	193.27	160.84	-	10.65	+	7.37
75 Mechanical Service	0.4552	182.81	181.25	154.55	+	0.86	+	18.29
76 Motor Vehicle Tax	0.1099	152.02	152.02	119.48	+	0.00	+	27.23
77 Transport Services	2.7034	195.09	200.46	177.93	-	2.68	+	9.64
Communication	3.2198	123.75	123.68	123.19	+	0.06	+	0.45
78 Postal Services	0.0662	173.27	172.89	164.72	+	0.22	+	5.19
79 Communication & Apparatus	3.1536	122.71	122.65	122.32	+	0.05	+	0.32
Recreation & Culture	2.0227	166.19	165.94	140.74	+	0.15	+	18.08
80 Recreation & Culture	0.8634	122.25	121.85	115.32	+	0.33	+	6.01
81 Text Books	0.5706	230.22	230.23	164.45	+	0.00	+	39.99
82 Newspapers	0.1934	155.91	155.91	149.97	+	0.00	+	3.96
83 Stationery	0.3953	174.73	174.36	157.51	+	0.21	+	10.93
Education	3.9431	154.78	154.47	140.91	+	0.20	+	9.84
84 Education	3.9431	154.78	154.47	140.91	+	0.20	+	9.84
Restaurants & Hotels	1.2286	201.11	200.30	182.32	+	0.40	+	10.31
85 Readymade Food	1.2286	201.11	200.30	182.32	+	0.40	+	10.31
Miscellaneous Goods & Services	2.7550	200.34	198.94	179.71	+	0.70	+	11.48
86 Personal Care	1.4935	179.17	178.18	162.39	+	0.56	+	10.33
87 Cosmetics	0.3853	149.54	148.93	138.81	+	0.41	+	7.73
88 Blades	0.0322	172.39	171.51	158.20	+	0.51	+	8.97
89 Personal Equipments	0.8440	262.07	259.57	229.83	+	0.96	+	14.03

Annexure B: Wholesale Price Indices by Major Groups and Commodities

(2007 - 2008 = 100)

Item and Specification	Weight	Index Numbers			% Change in Nov 2012 Over			
		Nov 2012	Oct 2012	Nov 2011	Oct 2012	Nov 2012	Nov 2011	Nov 2011
General	100.0000	192.18	192.88	178.39	-	0.36	+	7.73
Agriculture Forestry &	25.7674	189.19	194.13	184.98	-	2.54	+	2.28
001 Wheat	0.6297	181.31	177.61	162.51	+	2.08	+	11.57
002 Maize	0.6764	161.45	167.05	151.51	-	3.35	+	6.56
003 Rice	2.4413	163.85	163.86	151.90	-	0.01	+	7.87
004 Sorghum/Jowar	0.0214	188.66	184.26	177.59	+	2.39	+	6.23
005 Millet/Bajra	0.0374	156.89	194.58	147.59	-	19.37	+	6.30
006 Vegetables	1.2441	223.38	269.17	282.06	-	17.01	-	20.80
007 Fresh Fruits	1.5144	130.42	183.93	112.52	-	29.09	+	15.91
008 Dry Fruits	0.2478	175.06	173.49	188.14	+	0.90	-	6.95
009 Cotton Seeds	1.1511	170.85	170.28	196.11	+	0.33	-	12.88
010 Other Oil Seeds	0.0722	183.21	183.21	169.50	+	0.00	+	8.09
011 Edible Roots/Potatoes	0.2540	188.12	196.16	217.20	-	4.10	-	13.39
012 Stimulant and Spice Crops	0.1634	178.82	204.46	200.38	-	12.54	-	10.76
013 Pulses	0.4901	211.21	213.03	207.67	-	0.85	+	1.70
014 Sugar Crops	1.0725	267.92	267.92	291.82	+	0.00	-	8.19
015 Fibre Crops	5.3169	177.87	176.84	194.74	+	0.58	-	8.66
016 Unmanufactured Tobacco	0.0742	169.08	168.99	167.91	+	0.05	+	0.70
017 Poultry	0.5633	153.87	143.42	163.25	+	7.29	-	5.75
018 Raw Milk from Bovine Animals	7.0279	213.76	213.76	188.73	+	0.00	+	13.26
019 Eggs	0.5034	233.24	217.03	185.18	+	7.47	+	25.95
020 Raw Animal Materials/Wool	0.0351	137.58	136.65	130.85	+	0.68	+	5.14
021 Hides and Fur Skins, Raw	0.4834	138.71	137.17	130.50	+	1.12	+	6.29
022 Fuel Wood in Logs	0.0179	208.63	205.02	185.80	+	1.76	+	12.29
023 Fish Live Fresh or Chilled	1.7295	176.27	176.68	140.23	-	0.23	+	25.70
Ores/Minerals, Elec., Gas &	12.0389	208.05	207.79	170.09	+	0.13	+	22.32
024 Coal not Agglomerated	0.7508	196.08	196.08	125.49	+	0.00	+	56.25
025 Natural Gas Liquified	5.7385	192.78	192.25	179.87	+	0.28	+	7.18
026 Salt and Pure Sodium Chloride	0.0584	164.54	164.54	153.67	+	0.00	+	7.07
027 Electrical Energy	5.4912	226.10	226.10	166.13	+	0.00	+	36.10
Food, Beverages, Tobacco, Te	31.1122	187.56	185.83	175.63	+	0.93	+	6.79
Food Products, Beverages	20.0718	191.26	190.73	180.05	+	0.28	+	6.23
028 Meat of Animals	3.4559	227.09	227.09	213.36	+	0.00	+	6.44
029 Vegetables and Fruit Juice	0.0058	187.55	185.05	176.10	+	1.35	+	6.50
030 Dried Fruits and Nuts	0.1733	221.39	212.04	199.99	+	4.41	+	10.70
031 Fruit Juices	0.3880	157.66	157.15	156.09	+	0.32	+	1.01
032 Vegetable Oils Refined	1.9242	154.80	155.32	151.99	-	0.33	+	1.85
033 Vegetable Ghee	1.5632	139.91	141.43	139.88	-	1.07	+	0.02
034 Oil Cakes	0.9611	175.06	172.81	158.08	+	1.30	+	10.74
035 Processed Liquid Milk	4.4437	208.43	208.43	180.23	+	0.00	+	15.65
036 Milk and Cream in Solid Form	0.0316	171.16	170.79	165.95	+	0.22	+	3.14
037 Ice Cream	0.0047	167.68	167.68	154.15	+	0.00	+	8.78
038 Dairy Products N.E.C	0.0117	204.91	202.69	176.66	+	1.10	+	15.99
039 Wheat Flour	2.3034	166.05	164.13	151.63	+	1.17	+	9.51
040 Other Cereal Flour	0.0604	203.99	208.22	144.91	-	2.03	+	40.77
041 Sugar Refined	1.7975	205.06	204.34	247.60	+	0.35	-	17.18
042 Chocolate	0.0139	99.19	99.19	100.00	+	0.00	-	0.81
043 Sugar Confectionary	0.0738	100.40	100.40	100.40	+	0.00	+	0.00
044 Coffee and Tea	0.7303	198.68	192.33	188.78	+	3.30	+	5.24
045 Spices	0.1449	303.12	304.68	276.42	-	0.51	+	9.66
046 Other Food Products	0.0336	323.46	323.46	305.83	+	0.00	+	5.76
047 Mineral Water	0.0207	168.32	168.29	162.93	+	0.02	+	3.31
048 Beverages	0.6303	137.86	137.86	132.43	+	0.00	+	4.10
049 Tobacco Products	1.2998	208.80	208.80	170.46	+	0.00	+	22.49
Textiles & Apparels	10.3289	185.12	180.94	171.44	+	2.31	+	7.98
050 Cotton Yarn	5.2491	207.49	200.08	192.84	+	3.70	+	7.60
051 Nylon Yarn	0.1719	177.24	176.45	196.85	+	0.45	-	9.96
052 Blended Yarn	0.1689	188.63	190.06	200.48	-	0.75	-	5.91
053 Woven Fabrics	0.0128	196.74	196.74	162.80	+	0.00	+	20.85
054 Cotton Fabrics	0.6343	174.17	173.68	164.49	+	0.28	+	5.88
055 Other Fabrics	1.1016	165.62	165.62	151.58	+	0.00	+	9.26
056 Silk and Reyon Fabrics	0.7350	154.01	151.23	138.37	+	1.84	+	11.30
057 Towels	0.1235	203.06	200.68	178.07	+	1.19	+	14.03

Annexure B: Wholesale Price Indices by Major Groups and Commodities

(2007 - 2008 = 100)

Item and Specification	Weight	Index Numbers			% Change in Nov 2012 Over			
		Nov 2012	Oct 2012	Nov 2011	Oct 2012	Nov 2011	Nov 2011	Nov 2011
058 Blankets	0.0029	178.52	172.59	146.17	+	3.44	+	22.13
059 Bed Sheets	0.0913	197.94	197.94	160.30	+	0.00	+	23.48
060 Quilts	0.0019	149.37	147.05	142.42	+	1.58	+	4.88
061 Woolen Carpets	0.0383	106.55	106.55	105.95	+	0.00	+	0.57
062 Synthetic Carpets	0.0566	113.15	113.15	150.34	+	0.00	-	24.74
063 Hosiery Products	0.8832	175.07	173.15	150.62	+	1.11	+	16.23
064 Readymade Garments	1.0576	135.15	135.15	125.59	+	0.00	+	7.61
Leather Products	0.7115	118.56	118.56	111.75	+	0.00	+	6.09
065 Leather without Hair	0.2973	109.83	109.83	109.34	+	0.00	+	0.45
066 Other Leather N.E.C	0.2567	122.57	122.57	120.85	+	0.00	+	1.42
067 Footwears	0.1575	128.50	128.50	101.48	+	0.00	+	26.63
Other Transportable Goods	22.3659	206.43	206.53	189.50	-	0.05	+	8.93
068 Timber	0.0165	148.23	148.07	135.95	+	0.11	+	9.03
069 Printing Paper	0.4279	152.93	147.96	118.38	+	3.36	+	29.19
070 Hard Board	0.1579	239.58	239.58	141.67	+	0.00	+	69.11
071 Coke	0.2797	163.45	163.45	155.28	+	0.00	+	5.26
072 Motor Spirit	1.5336	172.08	174.17	147.65	-	1.20	+	16.55
073 Diesel Oil	5.2664	265.58	268.79	225.86	-	1.19	+	17.59
074 Kerosine Oil	0.2151	269.61	273.51	228.62	-	1.43	+	17.93
075 Furnace Oil	3.2664	172.69	179.20	196.81	-	3.63	-	12.26
076 Mobil Oil	0.7114	182.64	182.64	170.52	+	0.00	+	7.11
077 Chemicals	1.7720	153.56	149.01	145.01	+	3.05	+	5.90
078 Dyeing Material	0.1539	104.26	104.26	106.14	+	0.00	-	1.77
079 Fertilizers	2.8657	266.79	259.86	263.77	+	2.67	+	1.14
080 Pesticides	0.2763	197.49	197.49	164.77	+	0.00	+	19.86
081 Insecticides	0.1276	131.43	117.46	130.07	+	11.89	+	1.05
082 Paints and Varnishes	0.1916	237.48	237.29	180.34	+	0.08	+	31.68
083 Medicines	1.1428	139.50	139.44	113.92	+	0.04	+	22.45
084 Soaps and Detergents	0.8168	168.45	168.39	148.10	+	0.04	+	13.74
085 Auto Tyres	0.2703	180.73	180.73	172.02	+	0.00	+	5.06
086 Plastic Products	0.4550	191.35	191.31	178.54	+	0.02	+	7.17
087 Glass sheets	0.2089	190.93	190.93	169.06	+	0.00	+	12.94
088 Other Glass Articles	0.1635	191.72	189.33	203.99	+	1.26	-	6.02
089 Ceramics and Sanitary Fixture	0.0244	157.32	157.32	132.70	+	0.00	+	18.55
090 Bricks, Blocks and Tiles	0.1566	172.40	172.14	166.88	+	0.15	+	3.31
091 Cement	1.8145	187.15	183.17	155.21	+	2.17	+	20.58
092 Bed Foam	0.0006	140.67	140.00	123.67	+	0.48	+	13.75
093 Matches	0.0505	133.50	126.70	117.72	+	5.37	+	13.40
Metal Product, Machinery &	8.7156	159.04	158.67	151.66	+	0.23	+	4.87
094 Pig Iron	0.0593	128.97	128.97	128.97	+	0.00	+	0.00
095 Steel Bar and Sheets	1.4022	133.72	135.96	132.89	-	1.65	+	0.62
096 Pipe Fittings	0.0780	141.47	141.47	140.22	+	0.00	+	0.89
097 Steel Products	0.3879	161.94	161.94	150.72	+	0.00	+	7.44
098 Engines and Motors	0.0046	109.07	109.07	109.07	+	0.00	+	0.00
099 Vacuum Pumps	0.0155	115.39	115.39	115.39	+	0.00	+	0.00
100 Air Conditioners	0.0049	172.67	172.67	163.43	+	0.00	+	5.65
101 Cultivators	0.0551	189.23	184.66	184.66	+	2.47	+	2.47
102 Chuff Cutter	0.1293	138.54	138.54	131.08	+	0.00	+	5.69
103 Tractors	0.0028	161.96	161.96	180.89	+	0.00	-	10.46
104 Lathe Machines	0.0525	147.68	147.68	147.51	+	0.00	+	0.12
105 Concrete Mixture	0.0107	138.83	138.83	138.83	+	0.00	+	0.00
106 Fridge,WashM,SewM,Fans,Iro	1.1645	165.38	163.68	162.72	+	1.04	+	1.63
107 Electric Wires	0.0912	159.57	159.57	158.89	+	0.00	+	0.43
108 Lighting Equipments	1.4431	148.10	145.21	142.37	+	1.99	+	4.02
109 Radio and Television	0.1843	126.46	126.46	131.33	+	0.00	-	3.71
110 Motor Vehicles	0.0244	167.70	167.70	154.47	+	0.00	+	8.56
111 Motorcycles	0.2570	125.19	125.19	121.72	+	0.00	+	2.85
112 Bicycles	3.3483	177.87	177.87	164.21		0.00	+	8.32